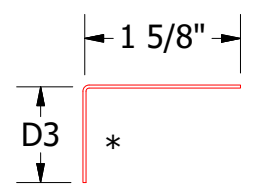
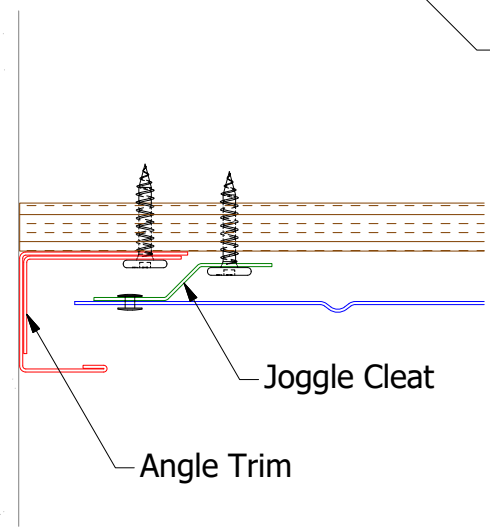
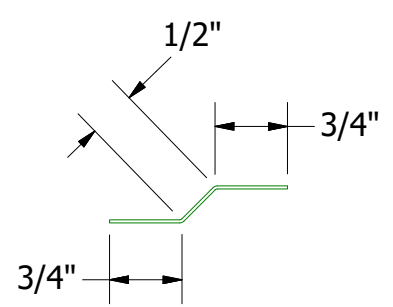


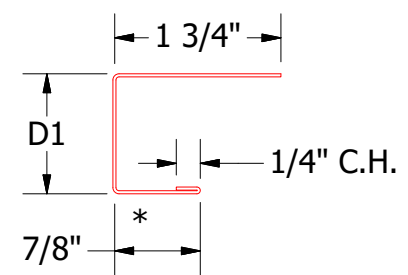
Alternate Detail



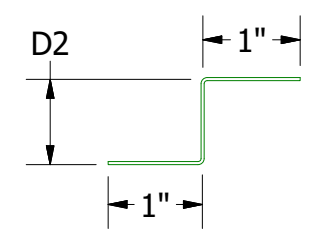
Angle Trim
DWA680: D3 = 1"
DSA680: D3 = 1 1/2"



Joggle Cleat
DWA975
DSA975



J Channel
DWA118: D1= 1 1/8"
DSA178: D1= 1 7/8"



Support Z
DWA681: D2=1"
DSA681:D2=1 5/8"

Note: * denotes color side.

REV. NO.		DATE	DESCRIPTION OF REVISION	BY	APP	TITLE	
01	10/27/2020		Revised Panel Assembly and Trim Dimensions. Added Alternate Detail	KRK		Design Wall Ending Endwall Soffit Detail	
DWG. NO.						DR	DATE
MATERIAL						MBP	7/11/2018
						APP	DATE
						SH. SIZE	SCALE
						B	X:X

ATAS ATAS INTERNATIONAL, INC
Allentown PA
610-395-8445
Mesa AZ
480-558-7210