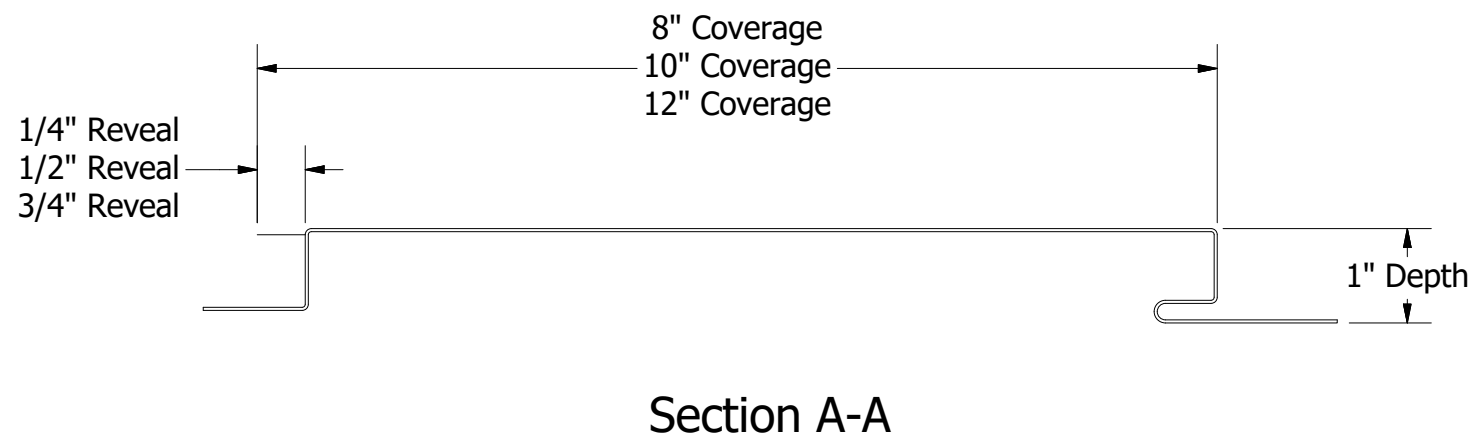
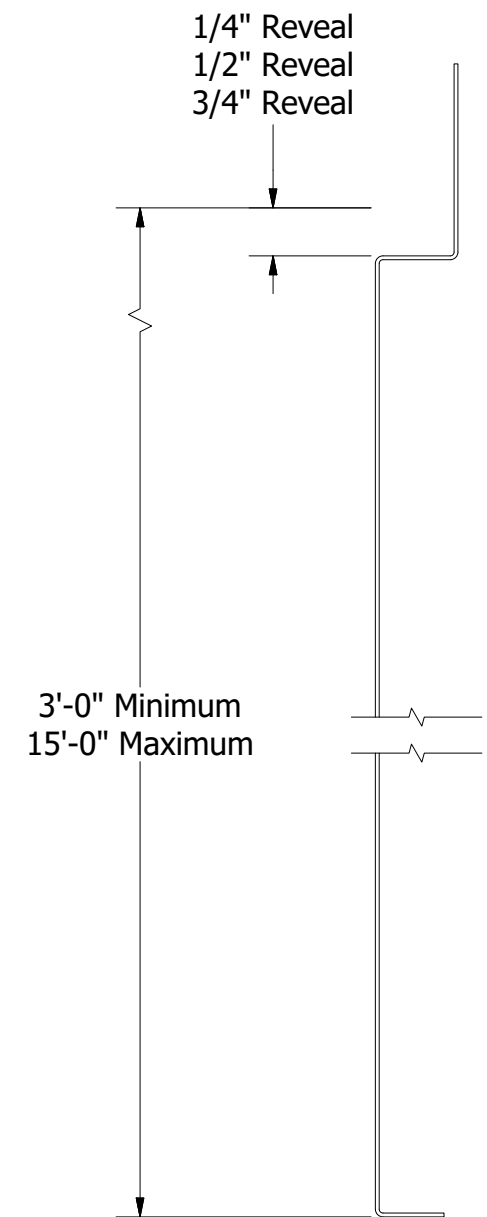


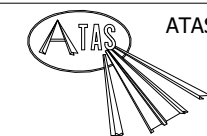
Versa-Seam Reveal Vertical Panel



Section A-A



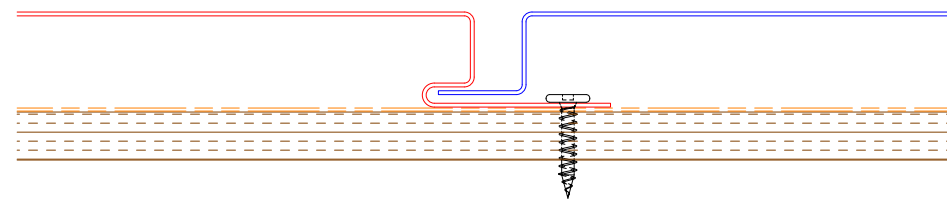
SECTION B-B



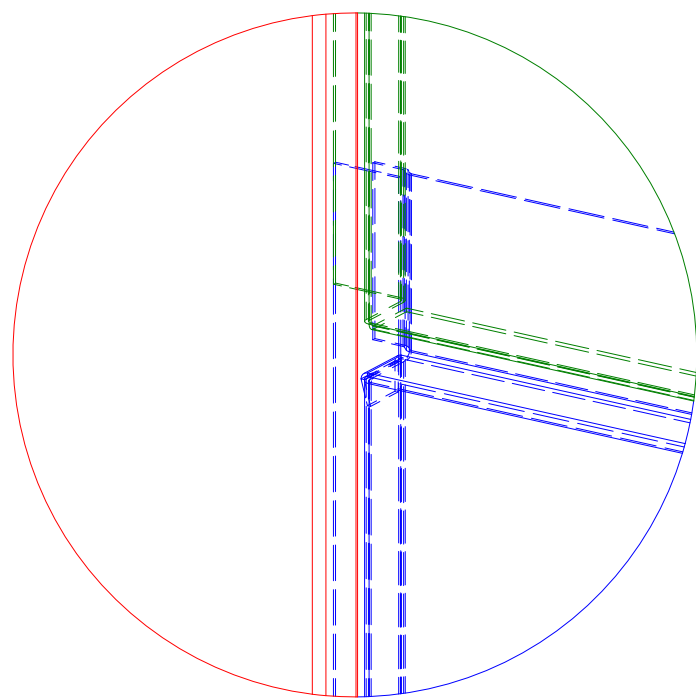
ATAS INTERNATIONAL, INC
Allentown PA
610-395-8445
Mesa AZ
480-558-7210

TITLE
Versa-Seam Reveal Solid Panel Detail

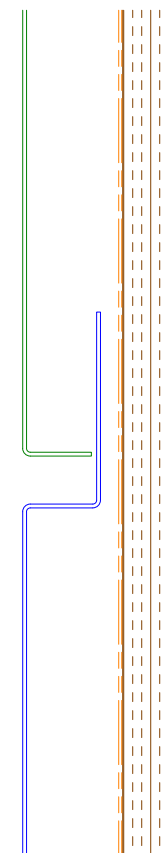
REV. NO.	DATE	DESCRIPTION OF REVISION	BY	APP	DWG. NO.	DR	KRK	DATE	12/6/2022
						APP		DATE	
					MATERIAL	SH. SIZE	B	SCALE	X:X



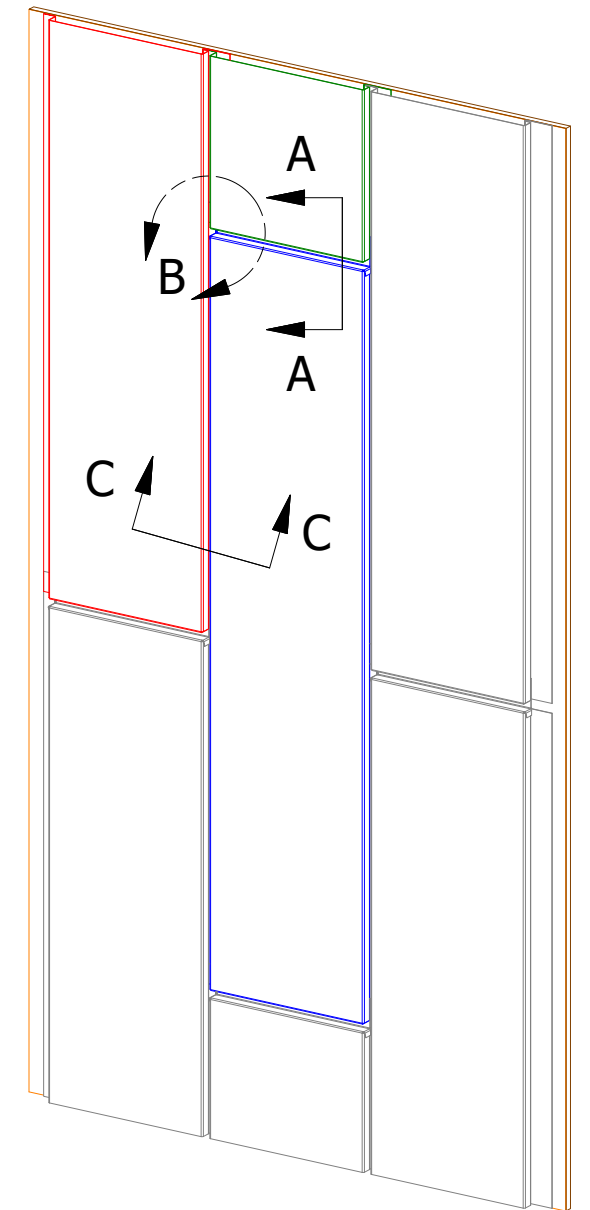
Section C-C



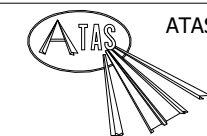
DETAIL B



SECTION A-A
Panel Reveal Interlock

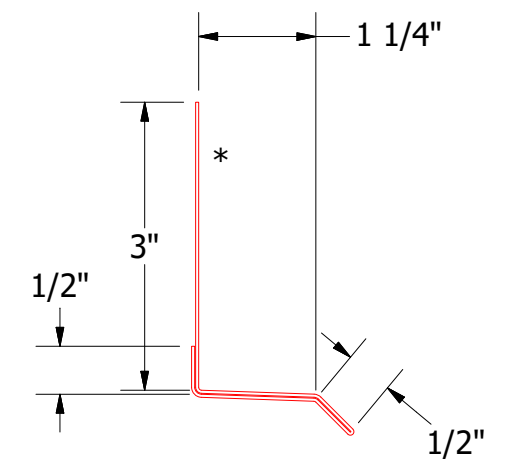
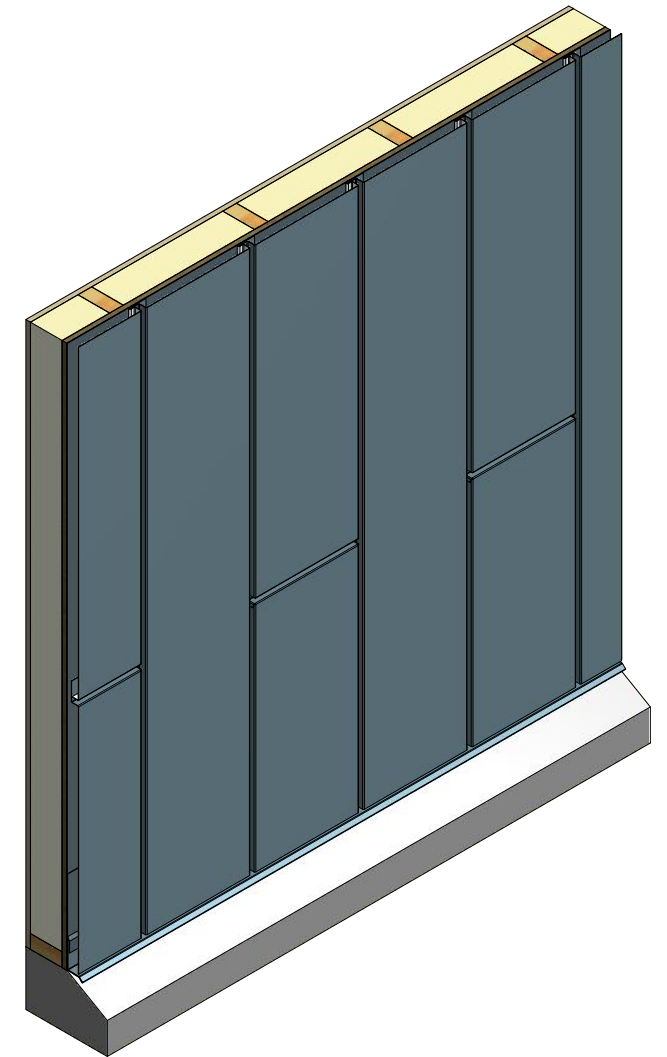
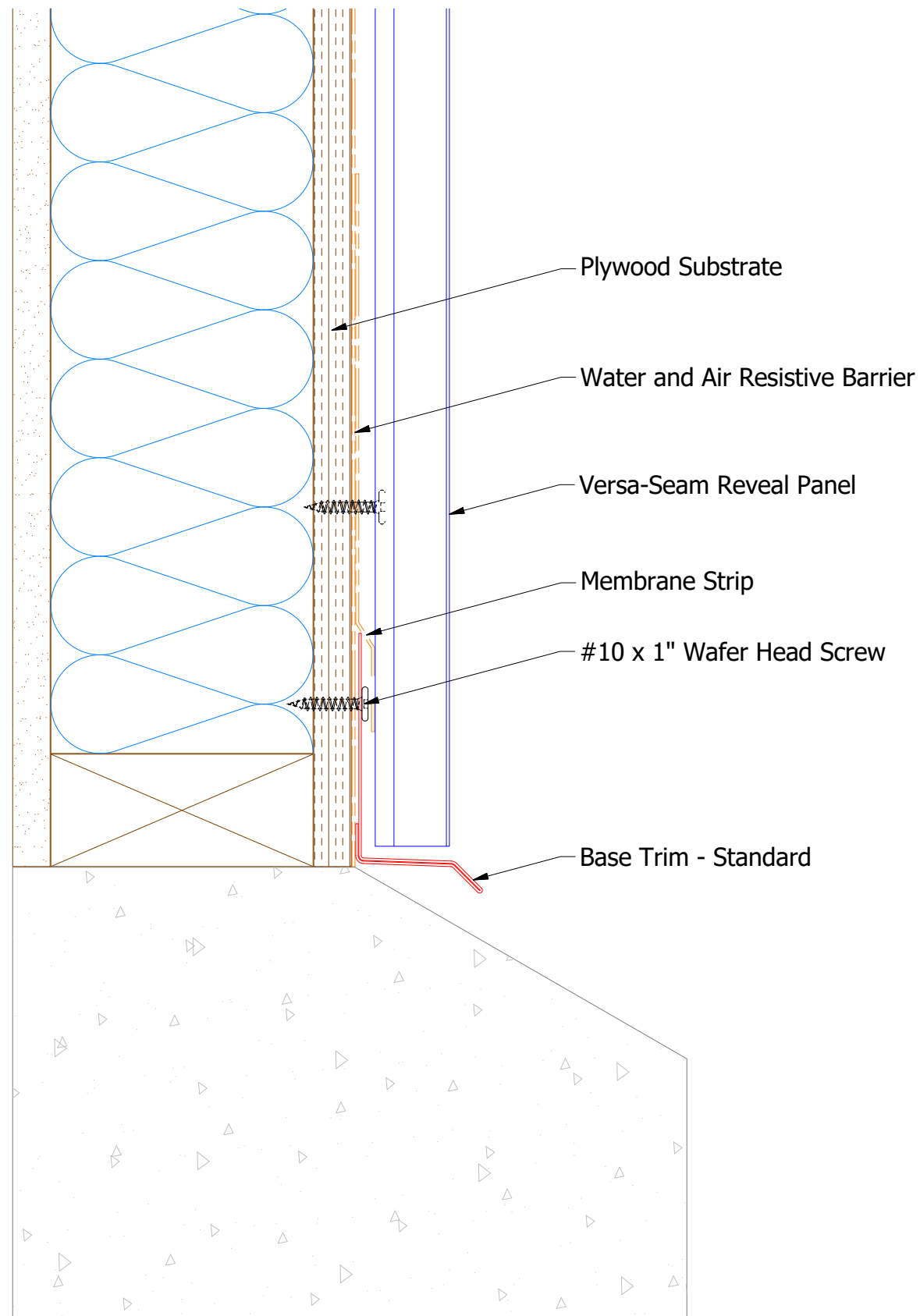


Note: Standard Panel Installation is Left to Right.
 Note: Vertical Panel Installed on either Opening Framing or Solid Substrate.



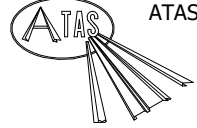
ATAS INTERNATIONAL, INC
 Allentown PA
 610-395-8445
 Mesa AZ
 480-558-7210

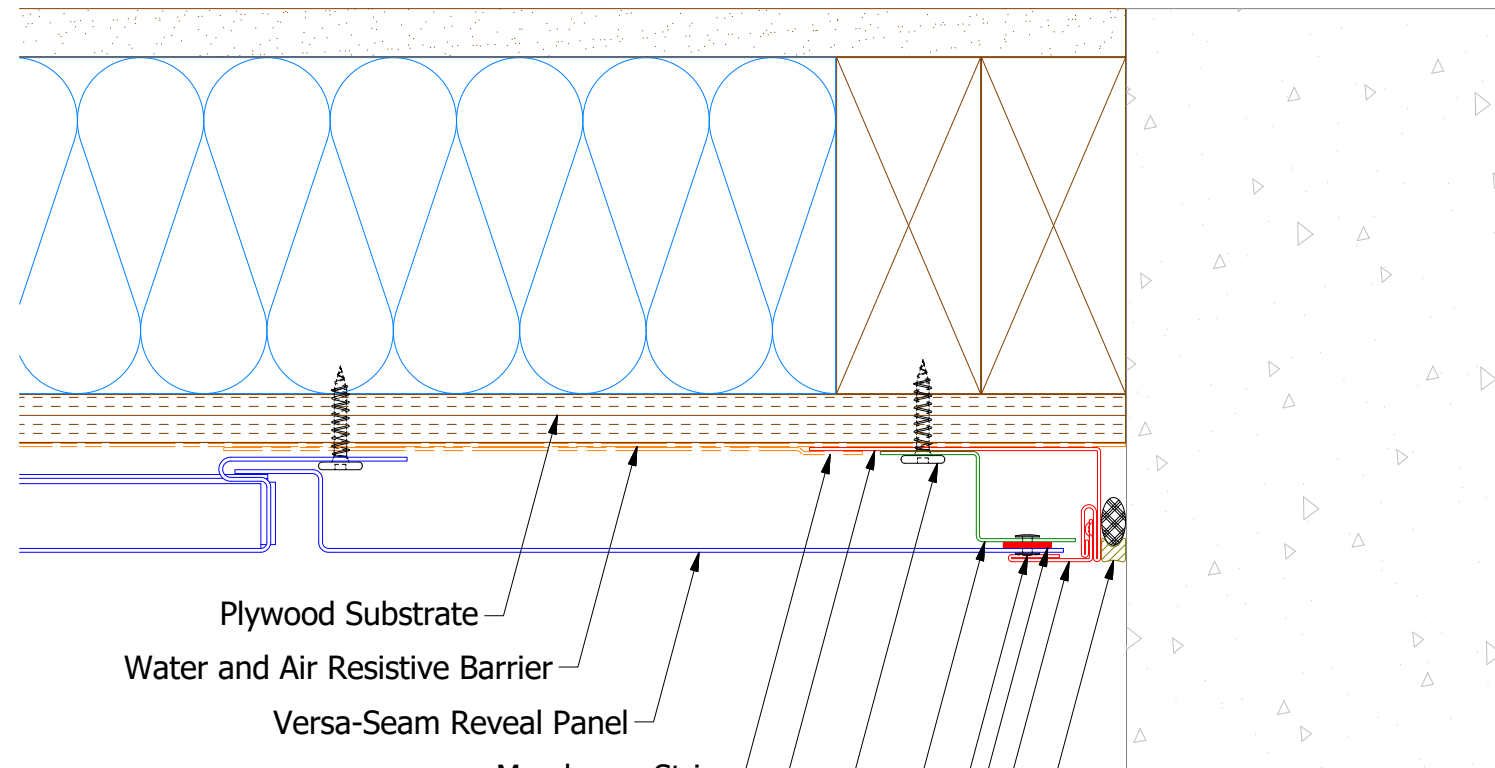
TITLE				Versa-Seam Reveal Solid Panel Installation	
DWG. NO.		DR		DATE	
		KRK		12/6/2022	
MATERIAL		APP		DATE	
REV. NO.	DATE	DESCRIPTION OF REVISION	BY	APP	SCALE
					B X:X



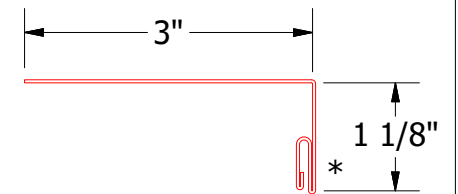
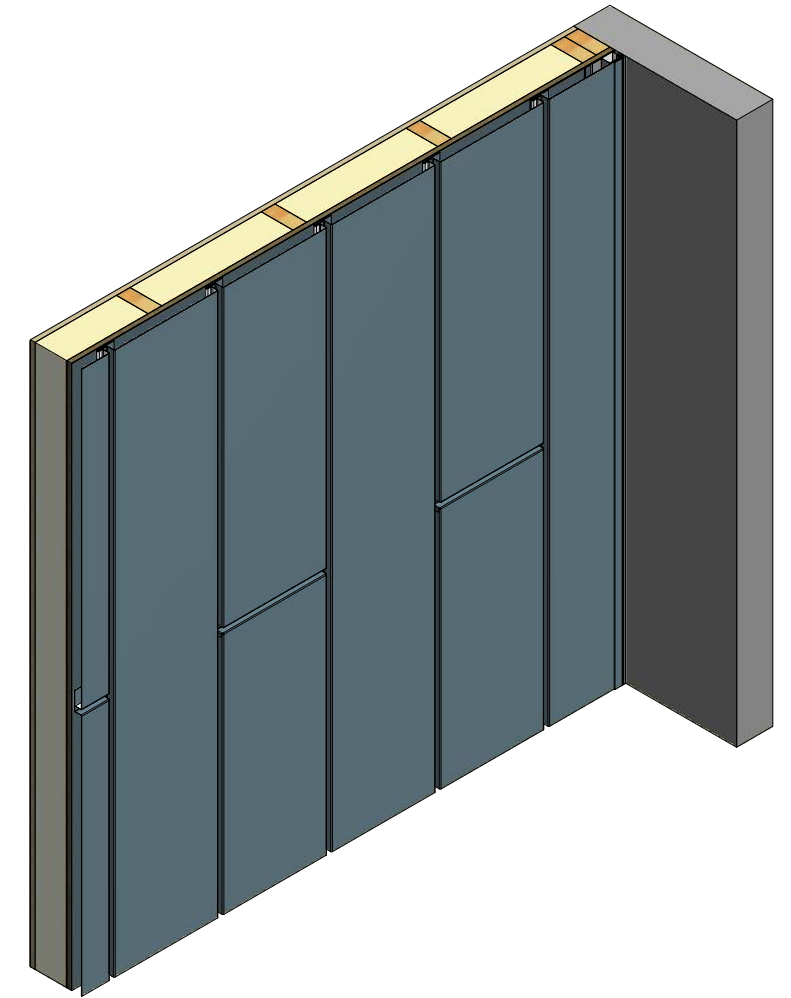
VSS661 - Base Trim - Standard

Note: * denotes color side.

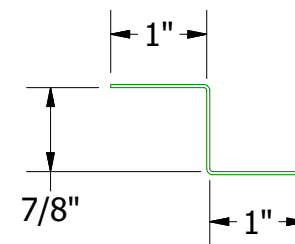
 ATAS INTERNATIONAL, INC Allentown PA 610-395-8445 Mesa AZ 480-558-7210		TITLE Versa-Seam Reveal Solid Base Vertical Detail	
		DWG. NO.	DR KRK
REV. NO.		DATE	DESCRIPTION OF REVISION
BY		APP	MATERIAL
SH. SIZE B		SCALE X:X	APP



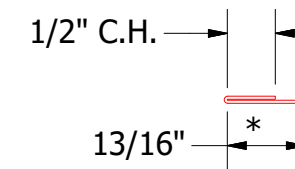
- Plywood Substrate
- Water and Air Resistive Barrier
- Versa-Seam Reveal Panel
- Membrane Strip
- Snap Base
- #10 x 1" Wafer Head Screw
- Support Z
- S.S. Painted Pop Rivets (if appropriate)
- Appropriately Applied VHB Tape
- Snap J Cover
- Backer Rod and Sealant



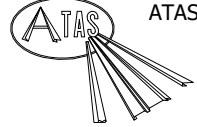
VSA119 - Snap Base



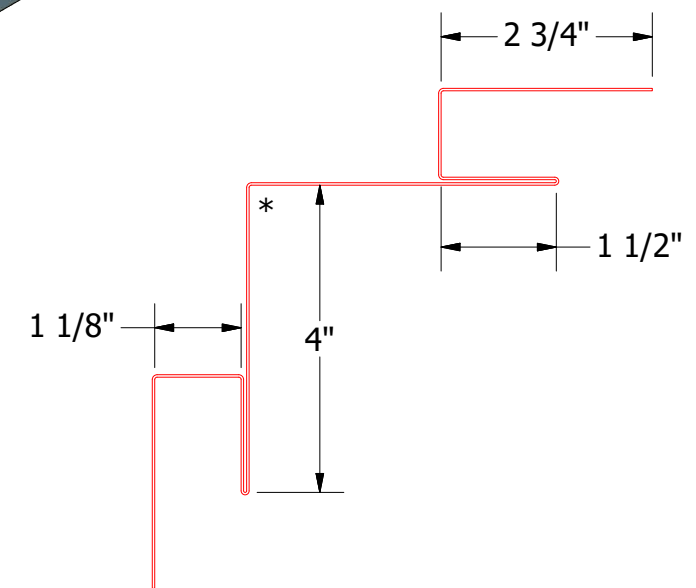
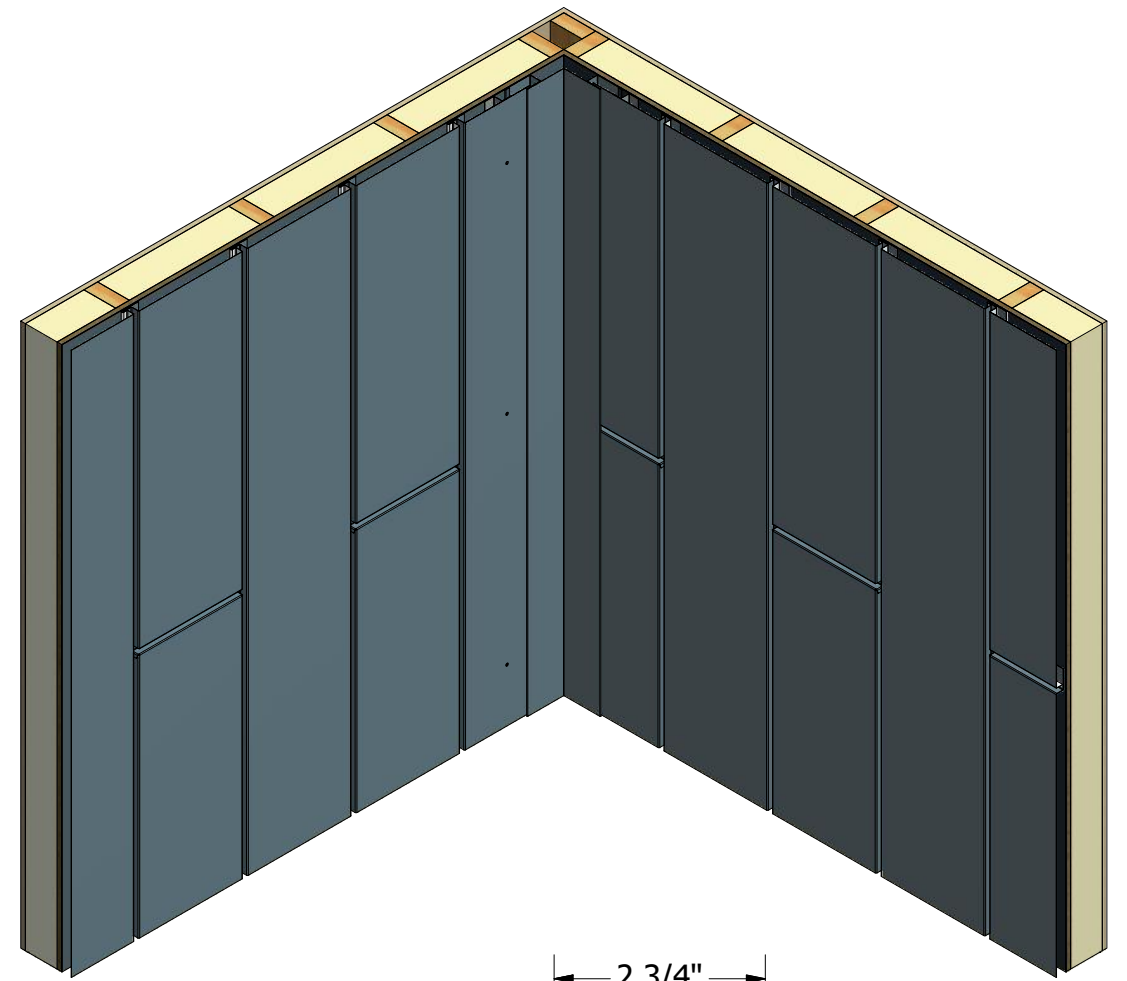
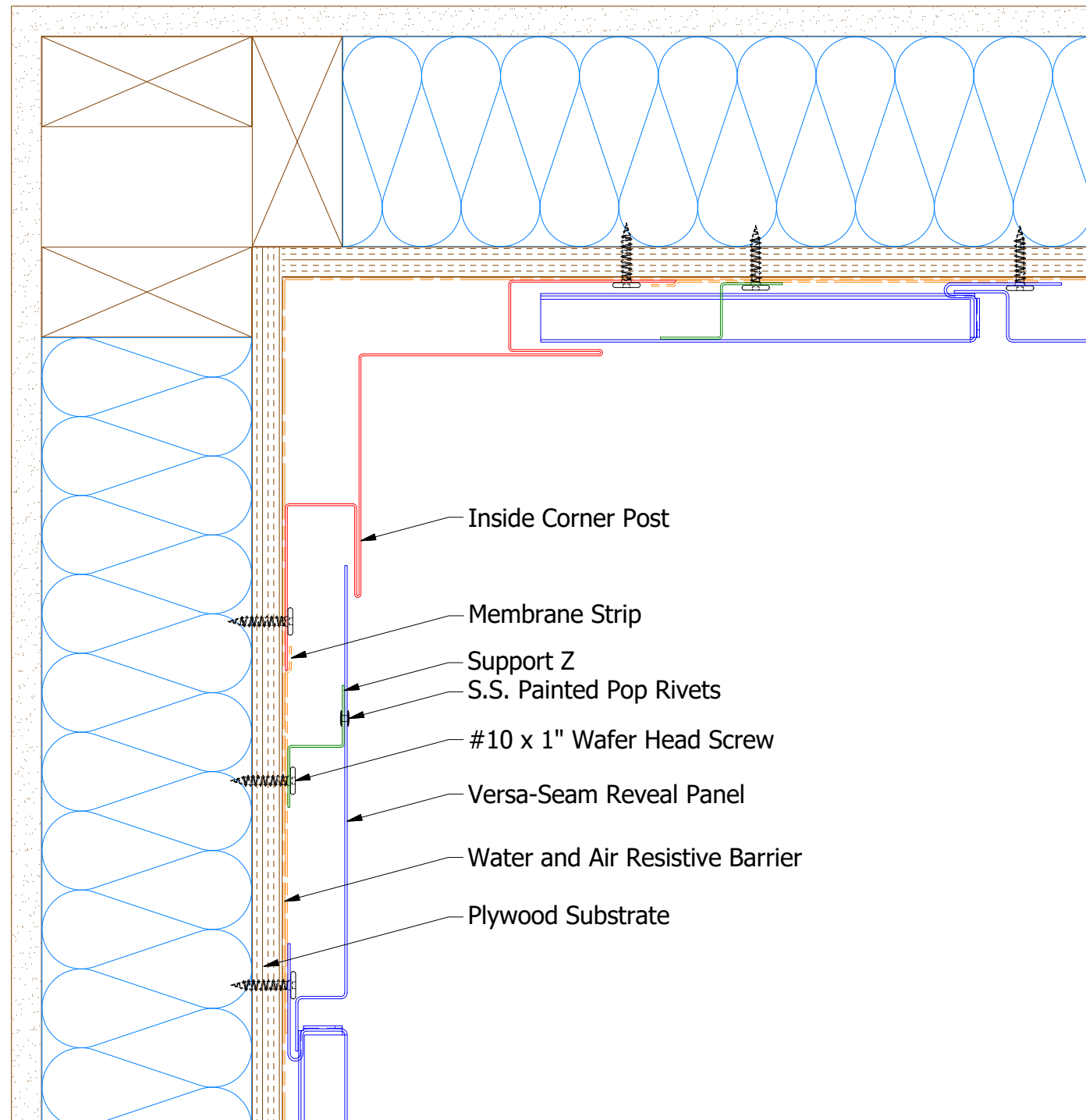
VSA681 - Support Z



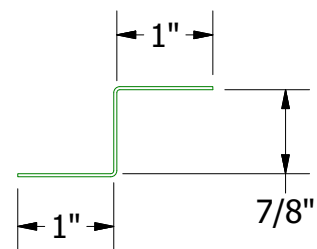
UNS078 - Snap J Cover

 ATAS INTERNATIONAL, INC Allentown PA 610-395-8445 Mesa AZ 480-558-7210		TITLE Versa-Seam Reveal Solid Endwall Vertical Detail				
		DWG. NO.	DR KRK APP	DATE 12/2/2022	DATE	
REV. NO.	DATE	DESCRIPTION OF REVISION	BY APP	MATERIAL	SH. SIZE B	SCALE X:X

Note: * denotes color side.

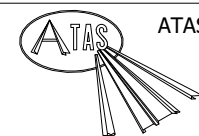


VSA601 - Inside Corner Post



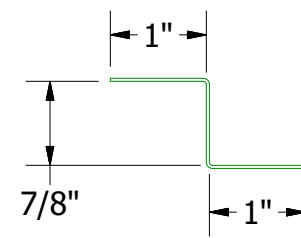
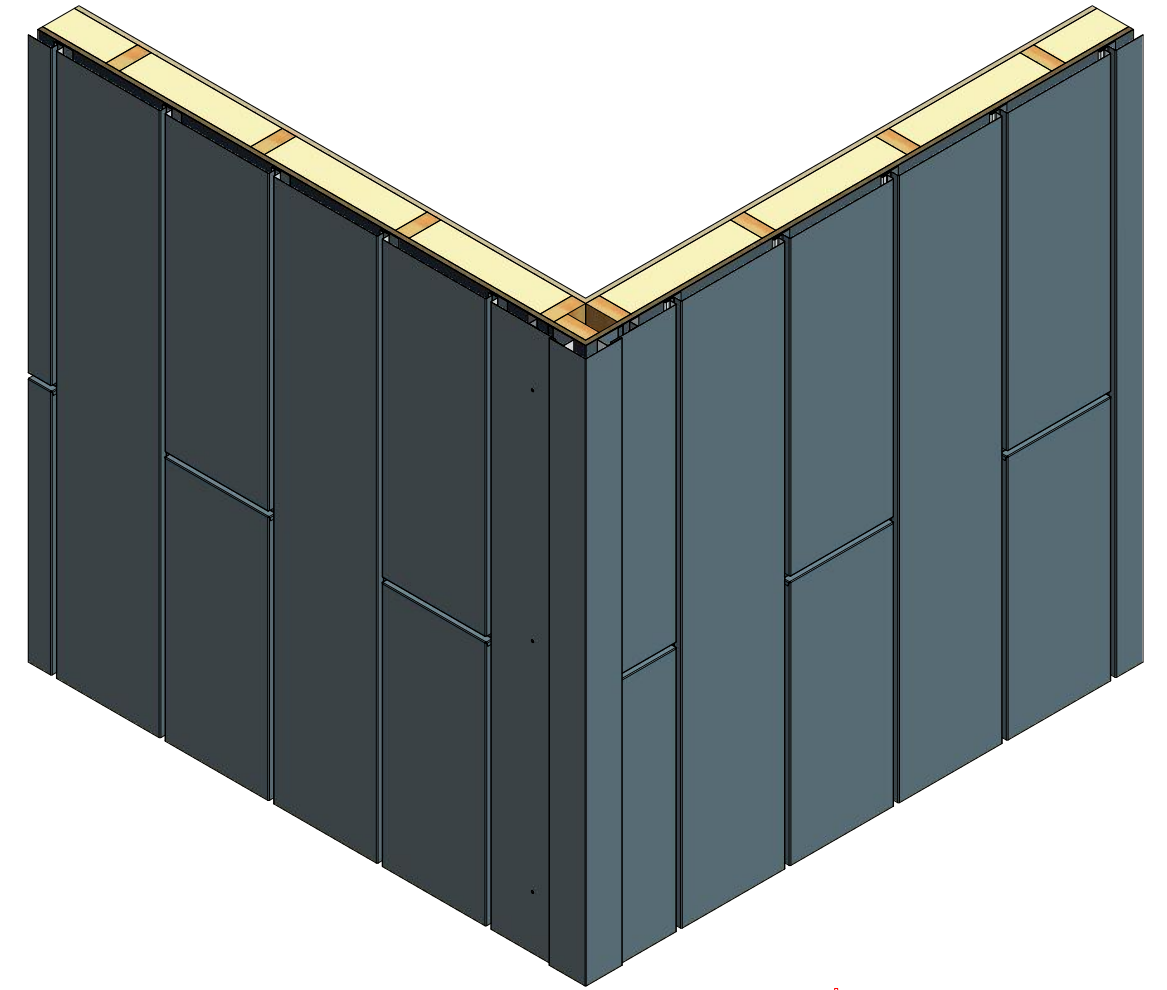
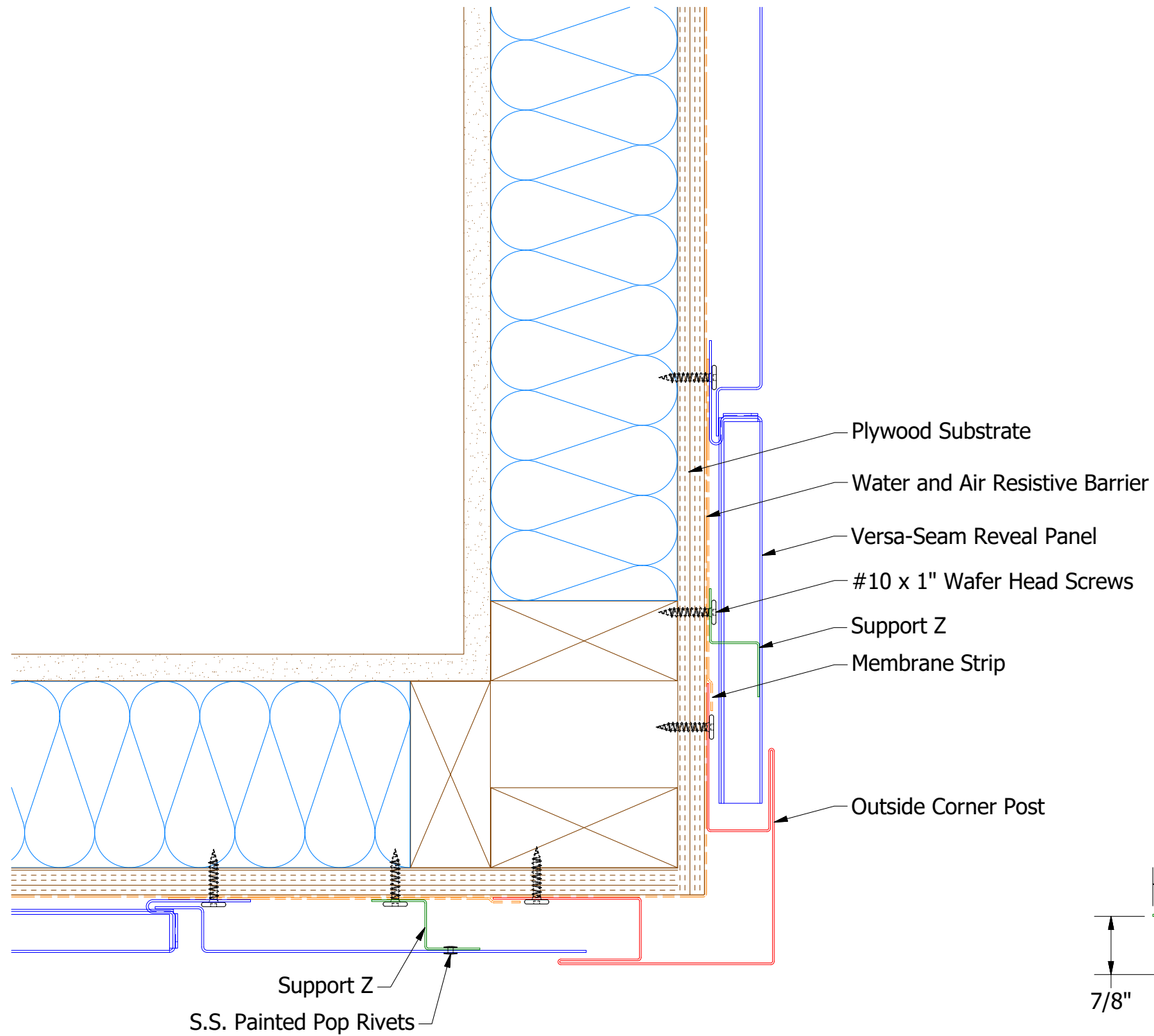
VSA681 - Support Z

Note: * denotes color side.

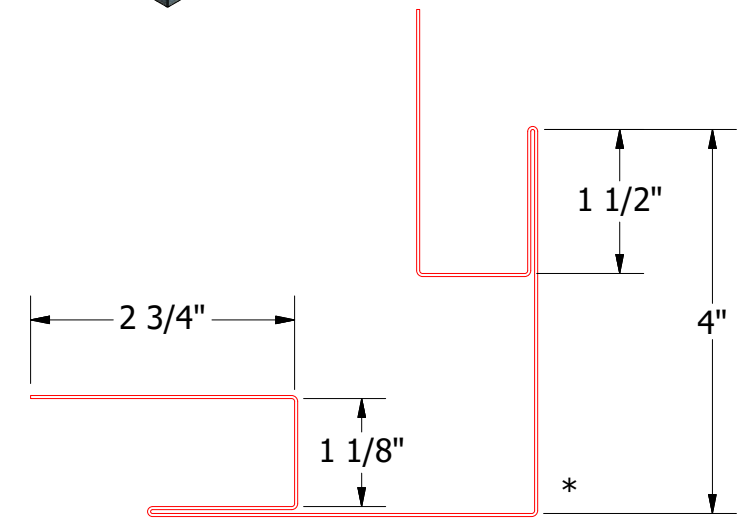


ATAS INTERNATIONAL, INC
 Allentown PA
 610-395-8445
 Mesa AZ
 480-558-7210

TITLE				Versa-Seam Reveal Solid Inside Corner Vertical Detail	
DWG. NO.		DR		DATE	
		KRK		12/5/2022	
MATERIAL		APP		DATE	
REV. NO.	DATE	DESCRIPTION OF REVISION	BY	APP	SCALE
					B X:X

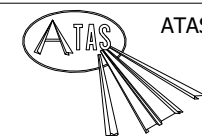


VSA681 - Support Z



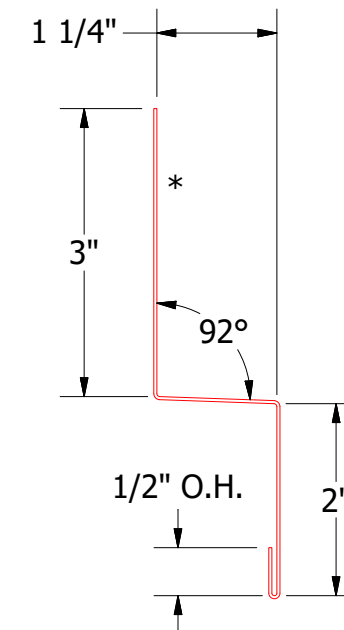
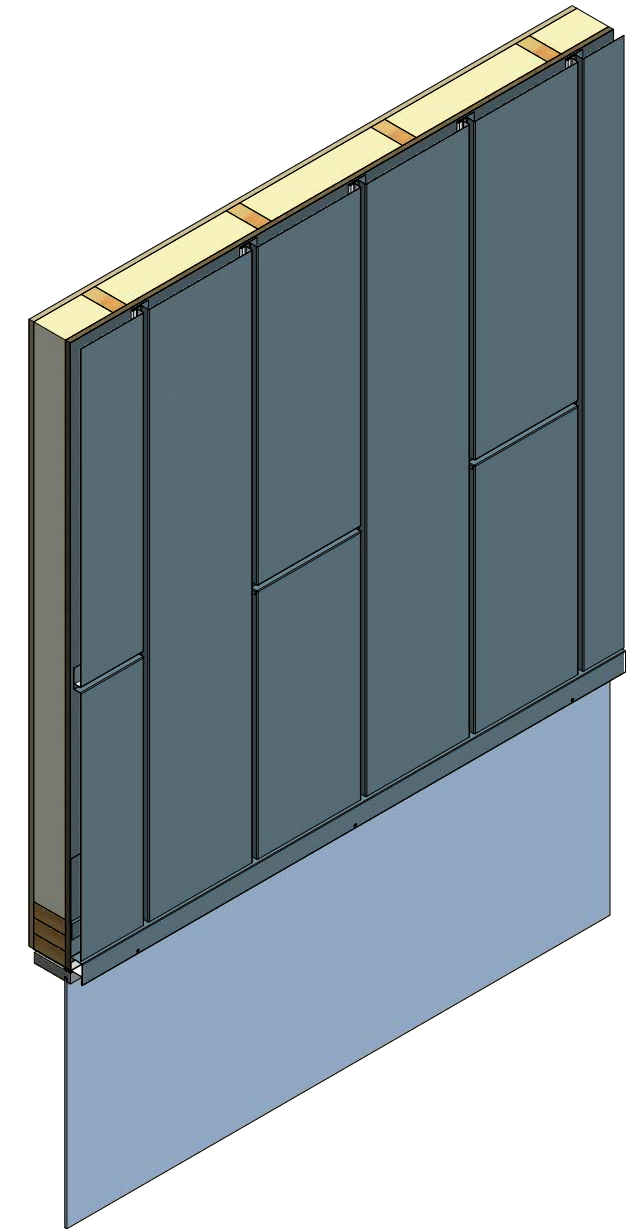
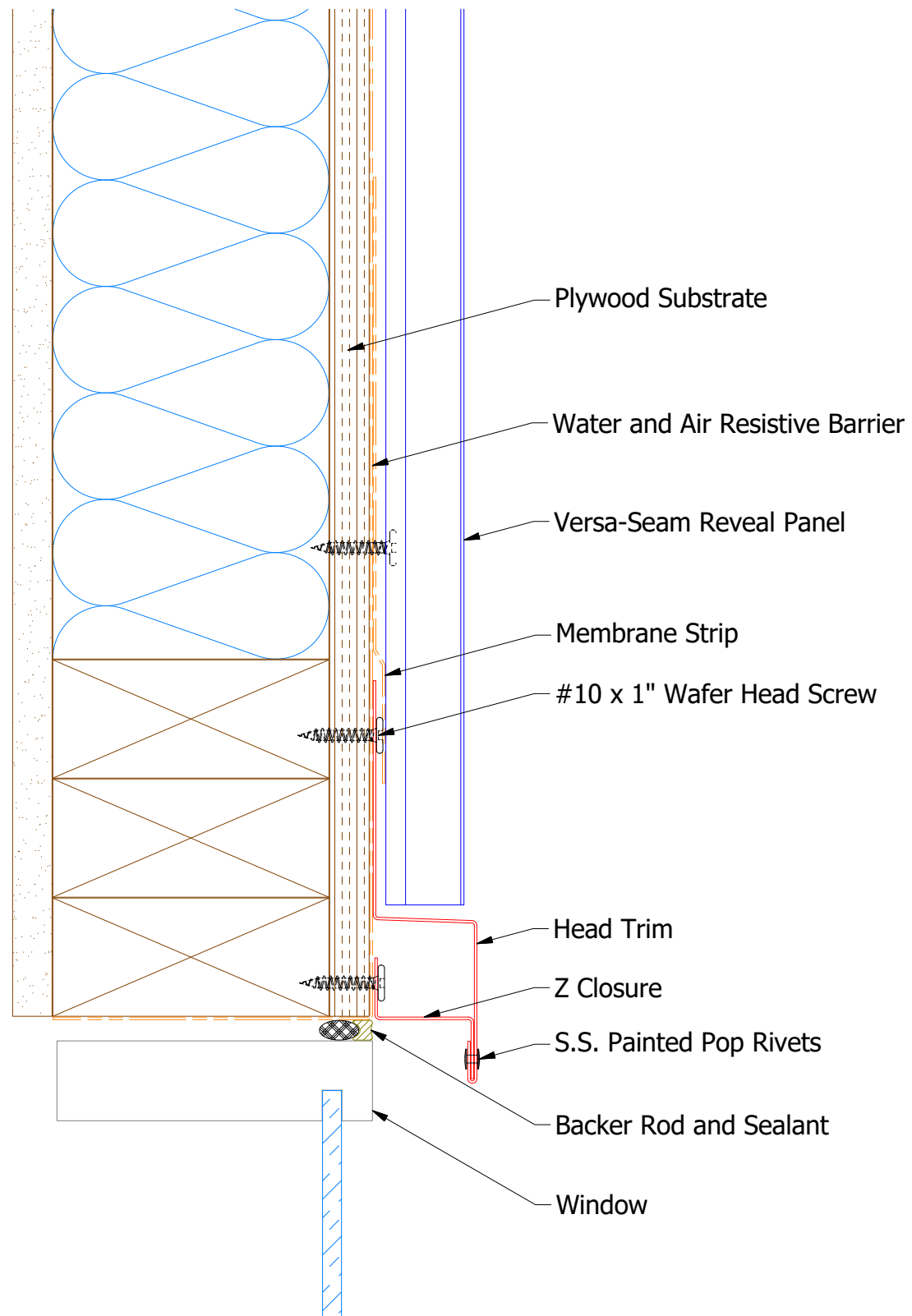
VSA602 - Outside Corner Post

Note: * denotes color side.

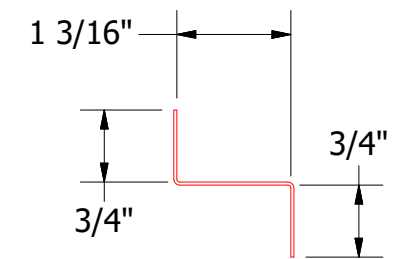


ATAS INTERNATIONAL, INC
 Allentown PA
 610-395-8445
 Mesa AZ
 480-558-7210

TITLE				Versa-Seam Reveal Solid Outside Corner Vertical Detail	
DWG. NO.		DR		DATE	
		KRK		12/5/2022	
MATERIAL		APP		DATE	
REV. NO.	DATE	DESCRIPTION OF REVISION	BY	APP	SCALE
					B X:X

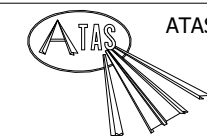


VSA550 - Head Trim



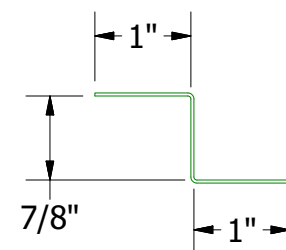
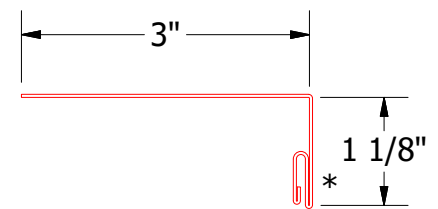
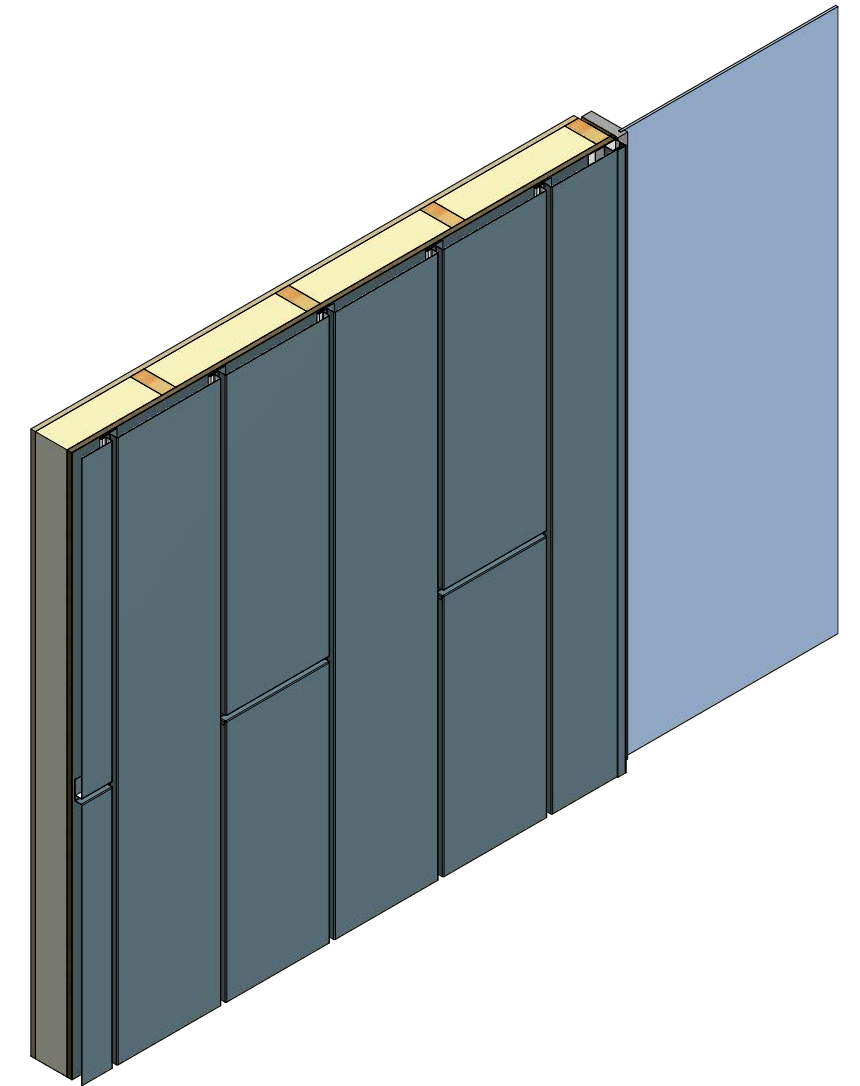
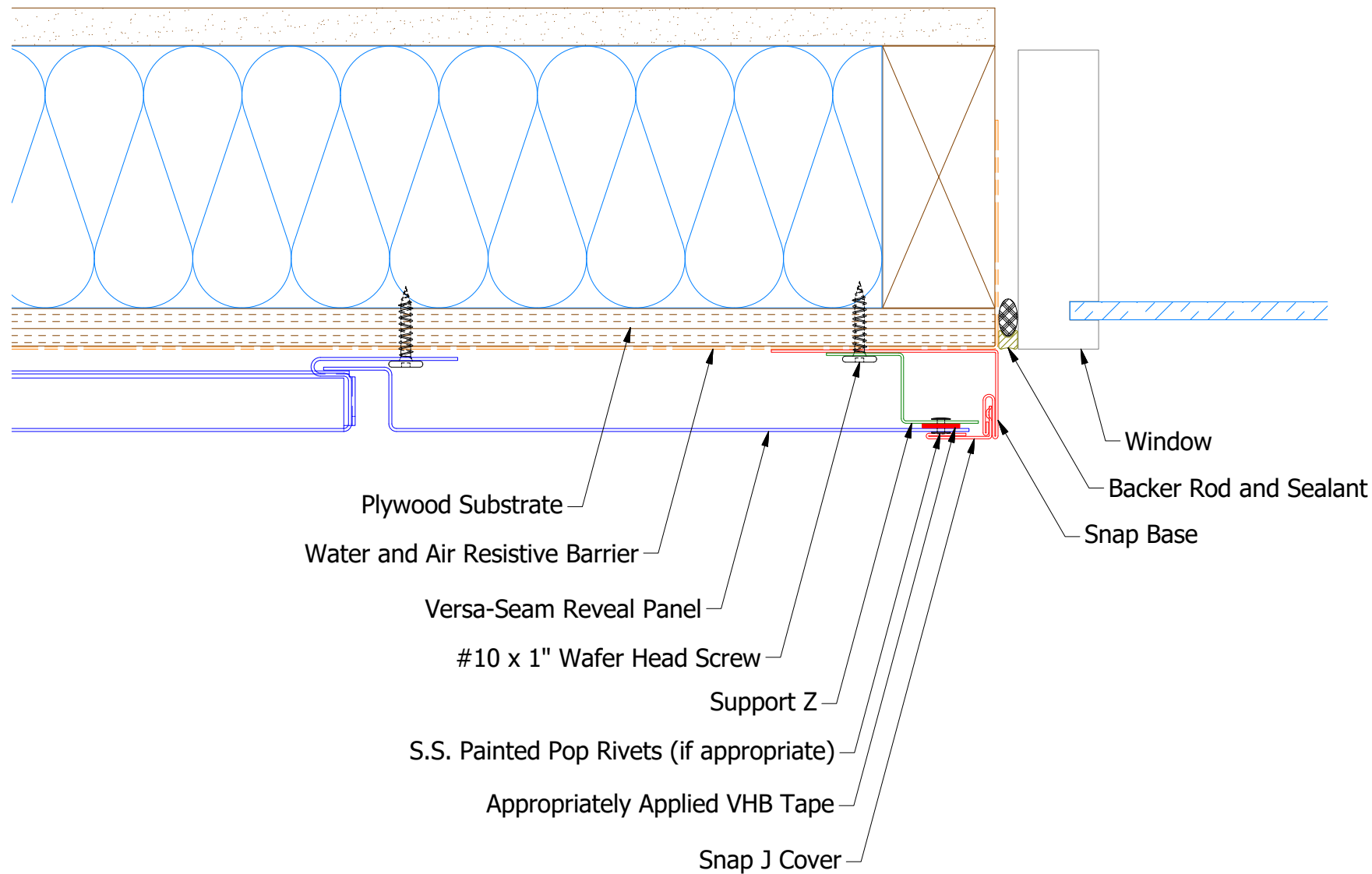
Z Closure

Note: * denotes color side.

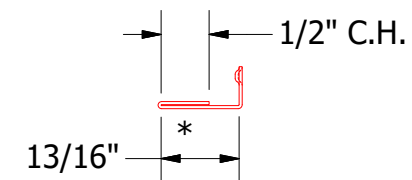


ATAS INTERNATIONAL, INC
 Allentown PA
 610-395-8445
 Mesa AZ
 480-558-7210

TITLE				Versa-Seam Reveal Solid Existing Window Head Vertical Detail	
DWG. NO.		DR		DATE	
		KRK		12/5/2022	
MATERIAL		APP		DATE	
REV. NO.	DATE	DESCRIPTION OF REVISION	BY	APP	SCALE
					B X:X



VSA681 - Support Z



UNS078 - Snap J Cover

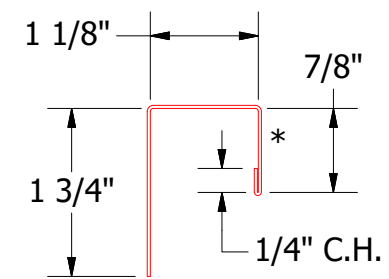
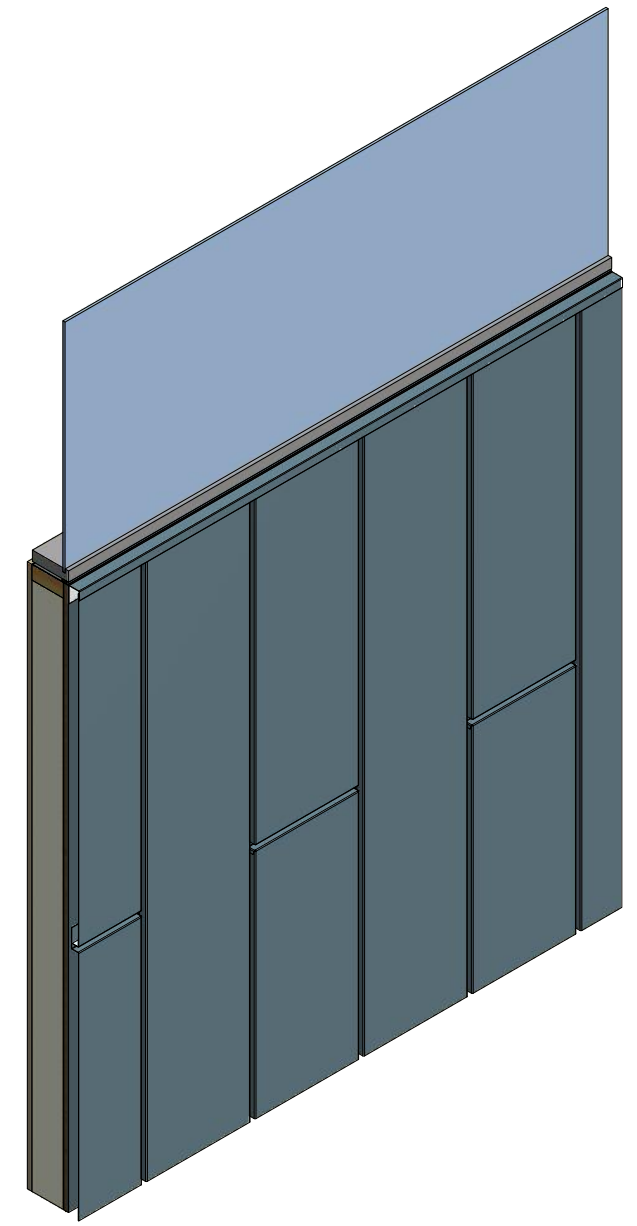
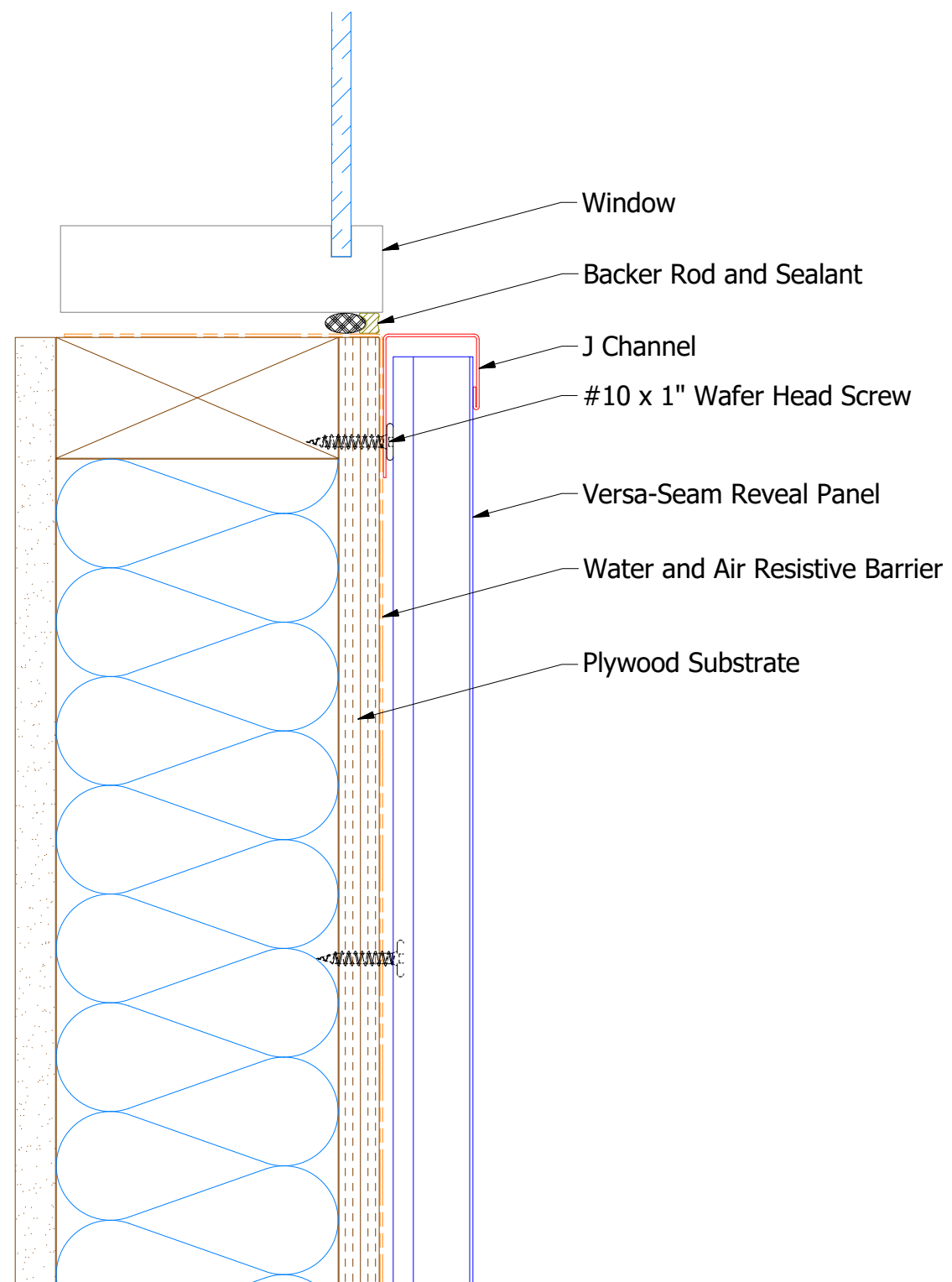
VSA119 - Snap Base


ATAS INTERNATIONAL, INC
 Allentown PA
 610-395-8445
 Mesa AZ
 480-558-7210

TITLE Versa-Seam Reveal Solid Existing Window Jamb Vertical Detail			
DWG. NO.	DR	DATE	
	KRK	12/6/2022	
MATERIAL	APP	DATE	
SH. SIZE	B	SCALE	X:X

Note: * denotes color side.

REV. NO.	DATE	DESCRIPTION OF REVISION	BY	APP



VSA118 - J Channel



ATAS INTERNATIONAL, INC
 Allentown PA
 610-395-8445
 Mesa AZ
 480-558-7210

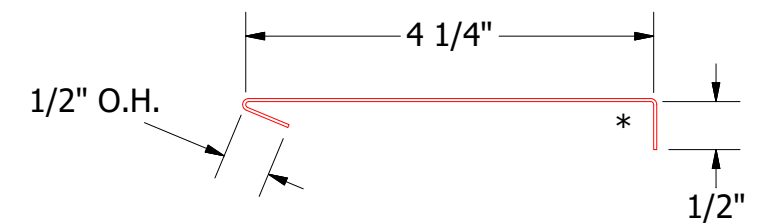
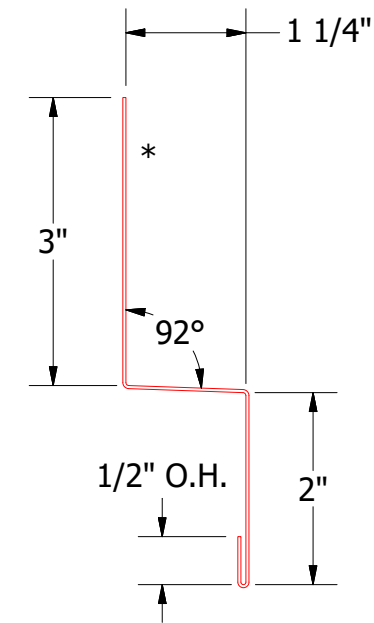
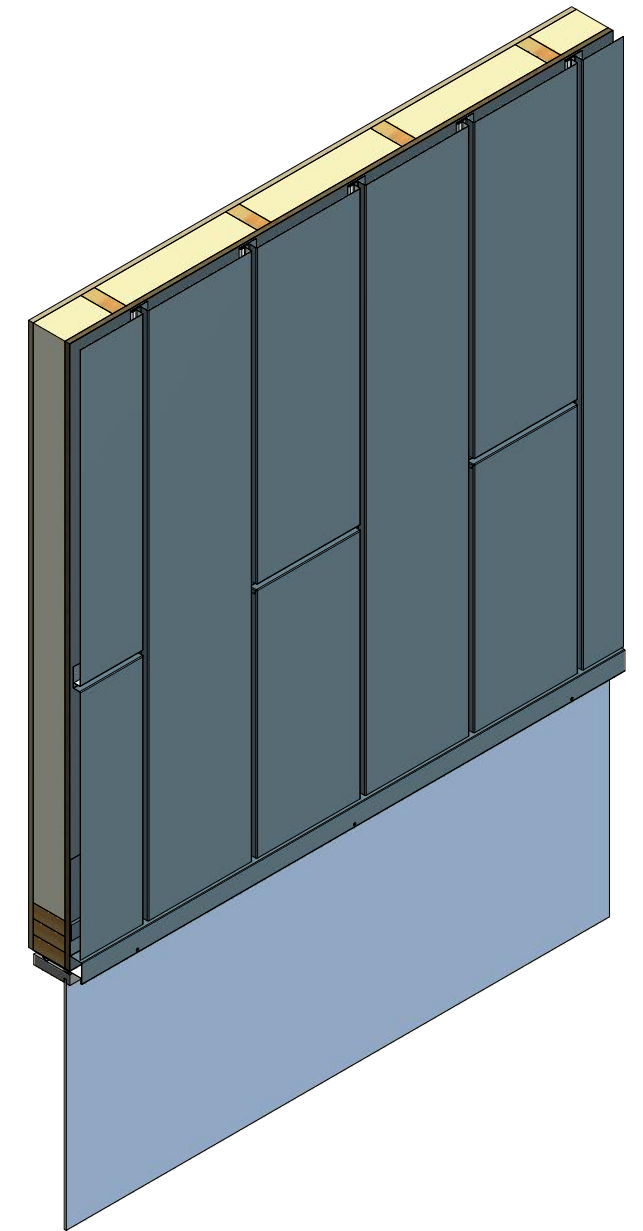
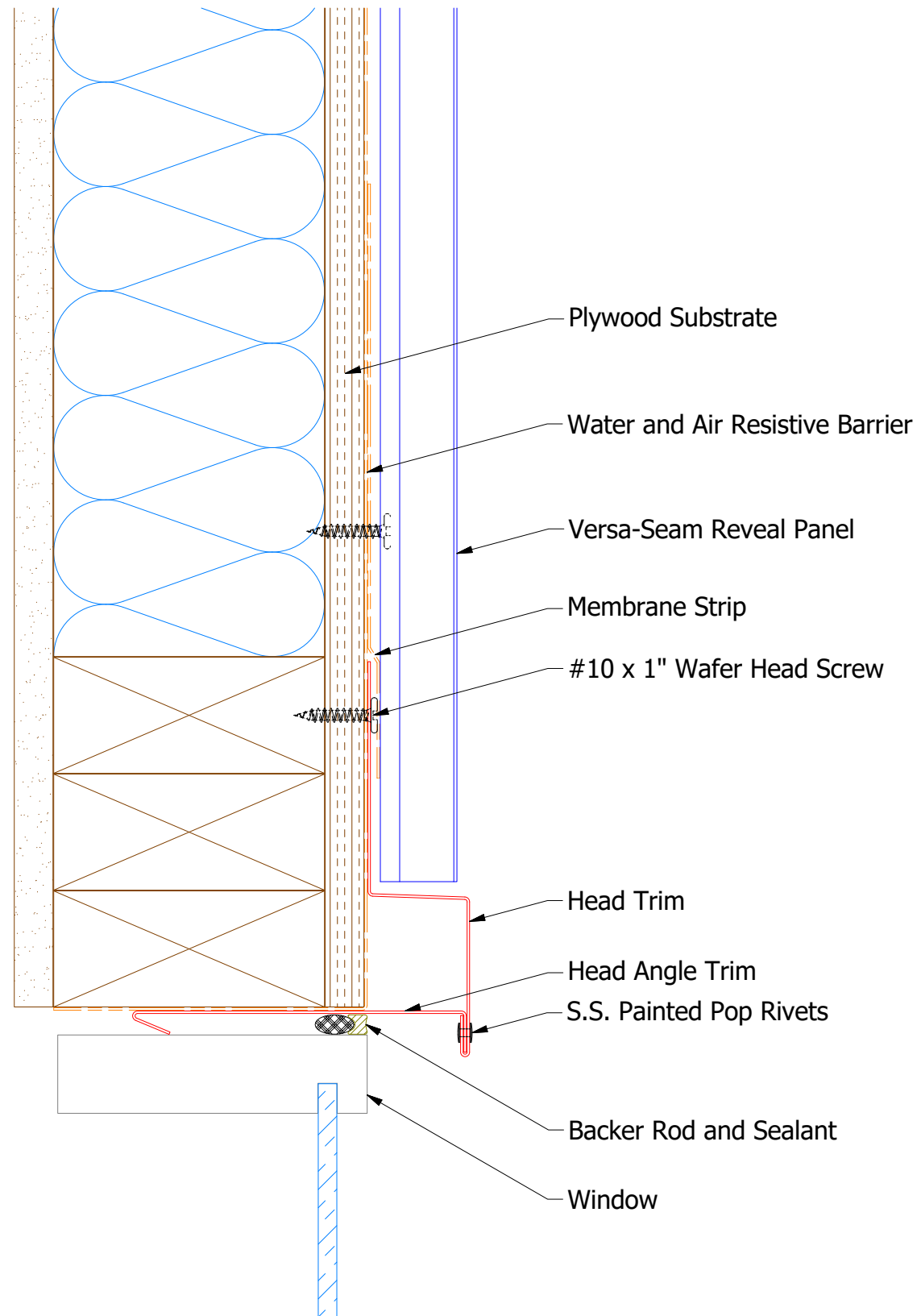
TITLE
 Versa-Seam Reveal Solid Existing Window Sill Vertical Detail

DWG. NO. DR KRK DATE 12/6/2022
 APP DATE

MATERIAL SH. SIZE B SCALE X:X

REV. NO.	DATE	DESCRIPTION OF REVISION	BY	APP

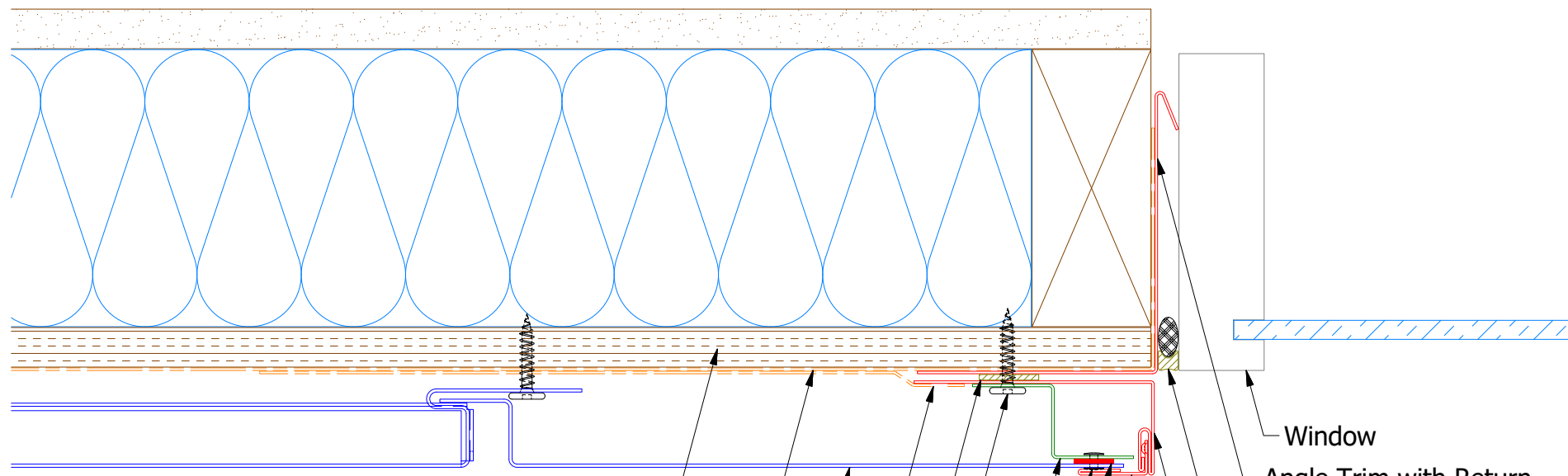
Note: * denotes color side.



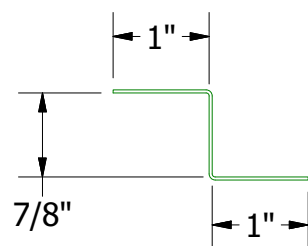
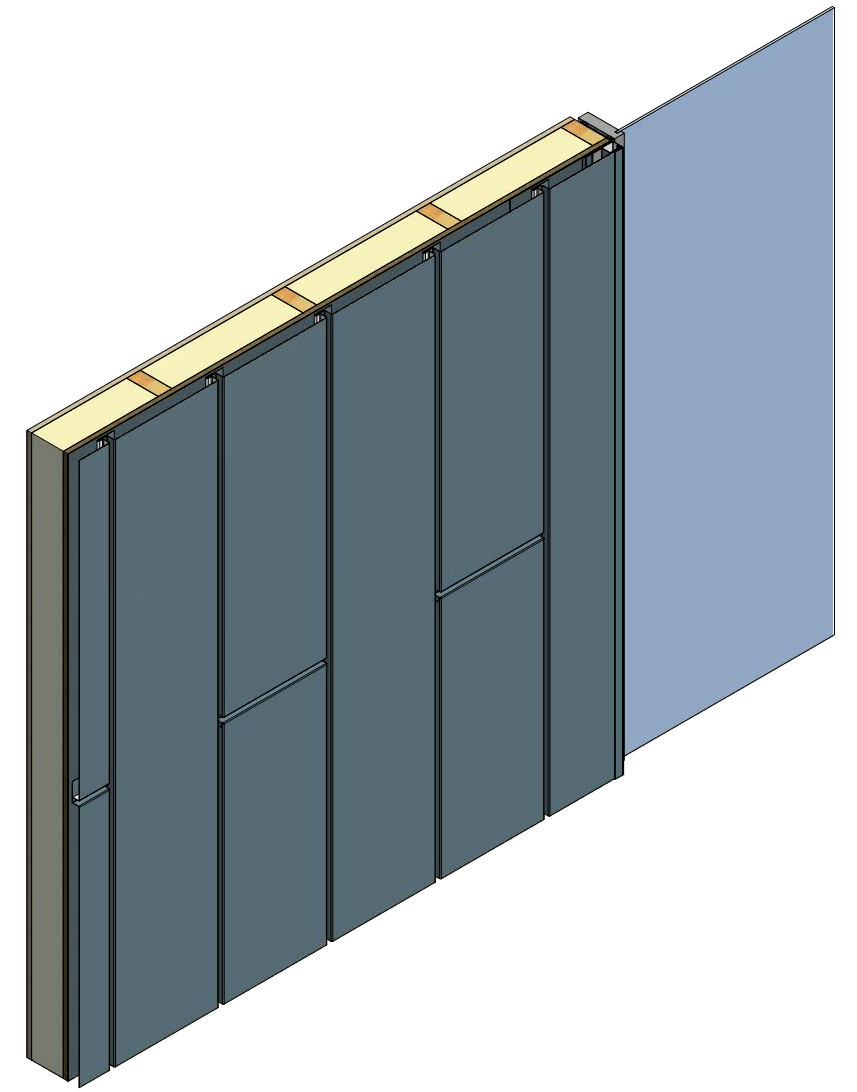
Note: * denotes color side.

		ATAS INTERNATIONAL, INC Allentown PA 610-395-8445 Mesa AZ 480-558-7210	
		TITLE Versa-Seam Reveal Solid Window Head Vertical Detail	
DWG. NO.	DR	DATE	
	KRK	12/5/2022	
MATERIAL	APP	DATE	
	SH. SIZE	B	SCALE X:X

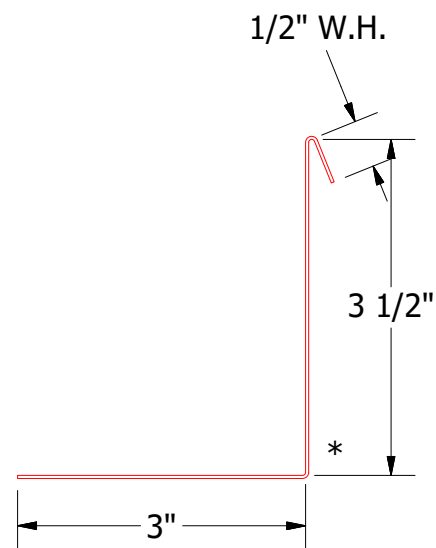
REV. NO.	DATE	DESCRIPTION OF REVISION	BY	APP



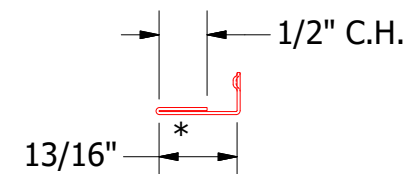
- Plywood Substrate
- Water and Air Resistive Barrier
- Versa-Seam Reveal Panel
- Membrane Strip
- Butyl Sealant Tape
- #10 x 1" Wafer Head Screw
- Support Z
- S.S. Painted Pop Rivets (if appropriate)
- Appropriately Applied VHB Tape
- Snap J Cover
- Window
- Angle Trim with Return
- Backer Rod and Sealant
- Snap Base



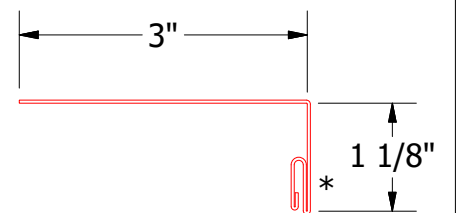
VSA681 - Support Z



VSA683 - Angle Trim with Return

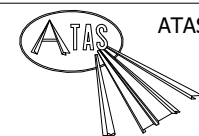


UNS078 - Snap J Cover



VSA119 - Snap Base

Note: * denotes color side.



ATAS INTERNATIONAL, INC
 Allentown PA
 610-395-8445
 Mesa AZ
 480-558-7210

REV. NO.	DATE	DESCRIPTION OF REVISION	BY	APP

TITLE Versa-Seam Reveal Solid Window Jamb Vertical Detail			DR	DATE
DWG. NO.	APP		KRK	12/6/2022
MATERIAL			SH. SIZE	SCALE
			B	X:X

