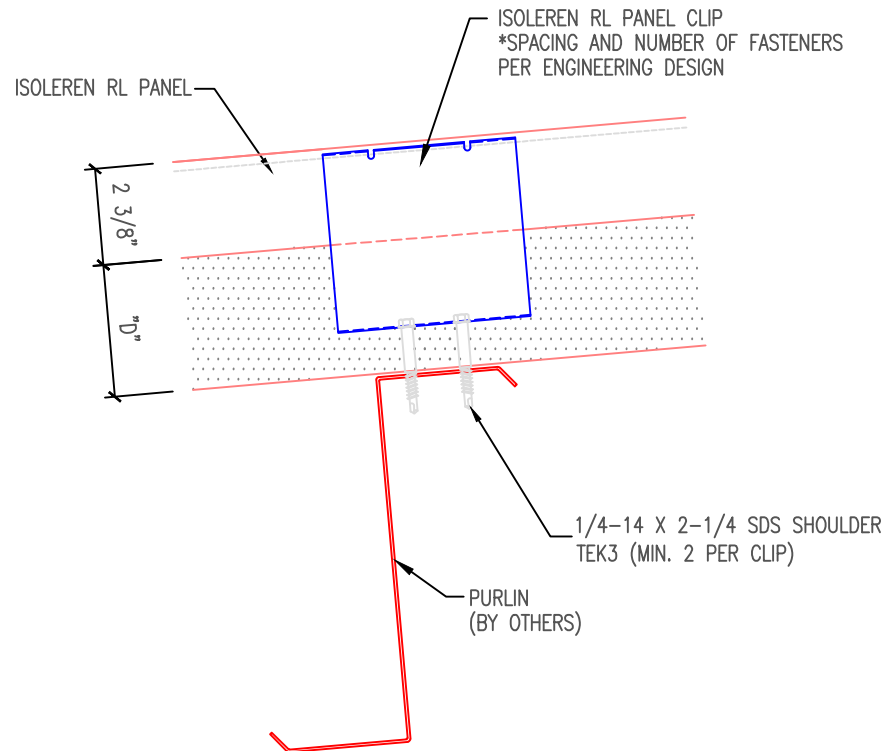


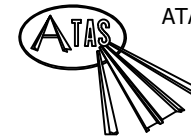
NOTE: DO NOT OVER DRIVE FASTENERS.

FASTENING SCHEDULE WILL VARY  
DEPENDING ON SPECIFIC APPLICATION



NOTE:  
1. "D" = ROOF PANEL THICKNESS (AVAILABLE THICKNESS = 2.5, 3, 4, 5 OR 6)

\*\* THE DETAIL SHOWN IS SUBJECT TO CHANGE WITHOUT NOTICE.



ATAS INTERNATIONAL, INC  
Allentown PA  
610-395-8445  
Mesa AZ  
480-558-7210

				TITLE		Roof-Clip Connection	
				DWG. NO.	DR	DATE	8/2/2016
				MATERIAL		APP	DATE
REV. NO.	DATE	DESCRIPTION OF REVISION	BY	APP	SH. SIZE	SCALE	X:X