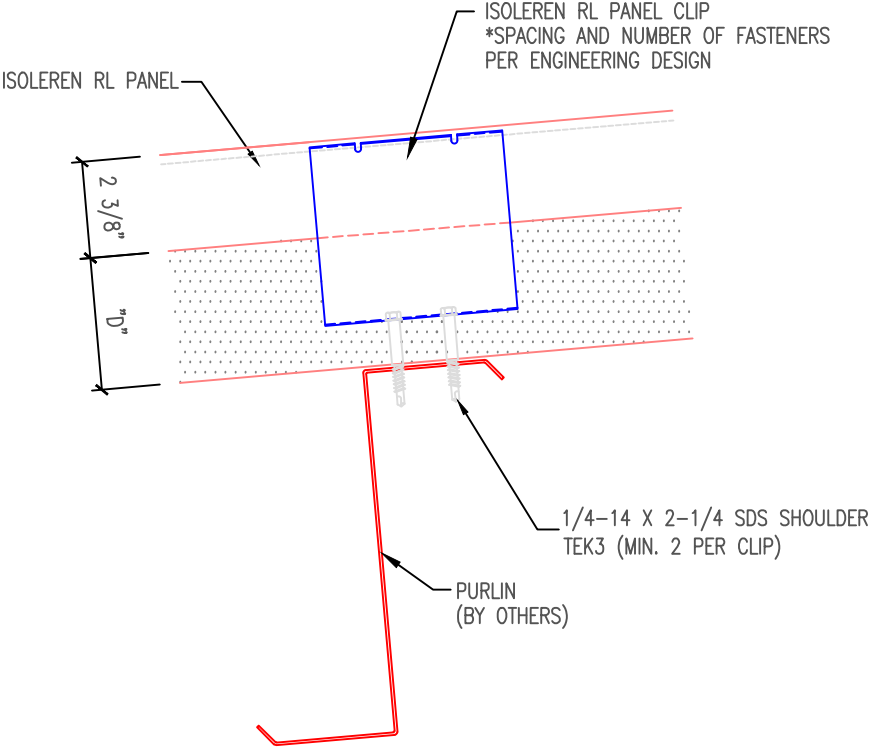


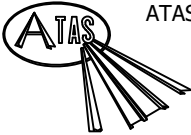
NOTE: DO NOT OVER DRIVE FASTENERS.

FASTENING SCHEDULE WILL VARY  
DEPENDING ON SPECIFIC APPLICATION



NOTE:  
1. "D" = ROOF PANEL THICKNESS (AVAILABLE THICKNESS = 2.5, 3, 4, 5 OR 6)

\*\* THE DETAIL SHOWN IS SUBJECT TO CHANGE WITHOUT NOTICE.

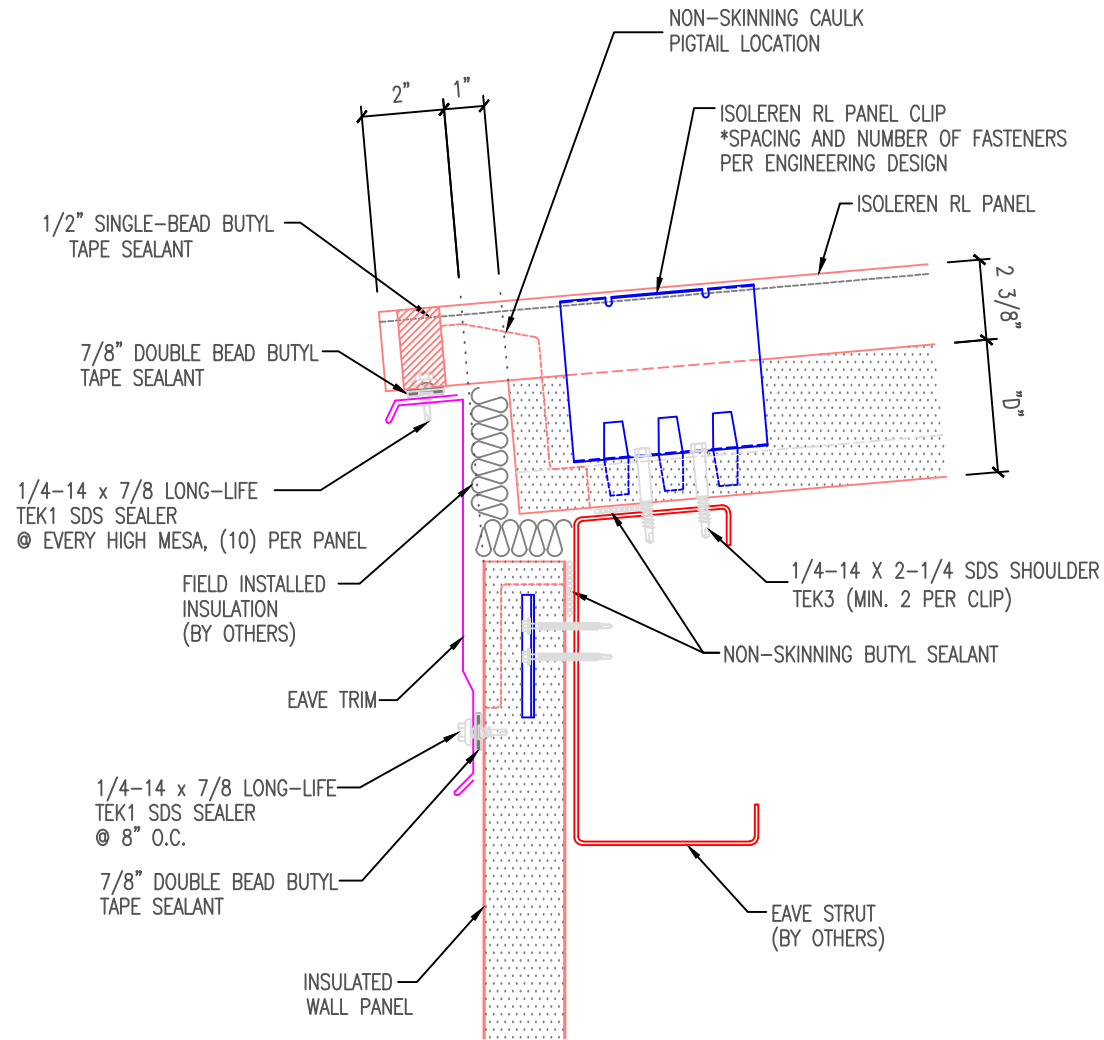


ATAS INTERNATIONAL, INC  
Allentown PA  
610-395-8445  
Mesa AZ  
480-558-7210

REV. NO.	DATE	DESCRIPTION OF REVISION	BY	APP

TITLE Roof-Clip Connection		
DWG. NO.	DR	DATE 8/2/2016
MATERIAL	APP	DATE
SH. SIZE	SCALE	X:X

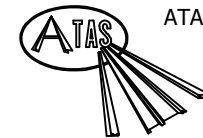
NOTE: FIELD REMOVE LINER AND INSULATION AT CUTBACK



NOTE:

1. "D" = ROOF PANEL THICKNESS (AVAILABLE THICKNESS = 2.5, 3, 4, 5, OR 6)
2. FIELD REMOVE LINER AND INSULATION AT CUTBACK
3. DIMENSIONS SHOWN ARE FOR 3" THICK ROOF PANEL. ADJUST DIMENSION PROPORTIONALLY FOR OTHER ROOF PANELS THICKNESS.
4. FILLER INSULATION MATERIAL AND APPLICATION IS SPECIFIED BY THE PROJECT DESIGNER.

\*\* THE DETAIL SHOWN IS SUBJECT TO CHANGE WITHOUT NOTICE.



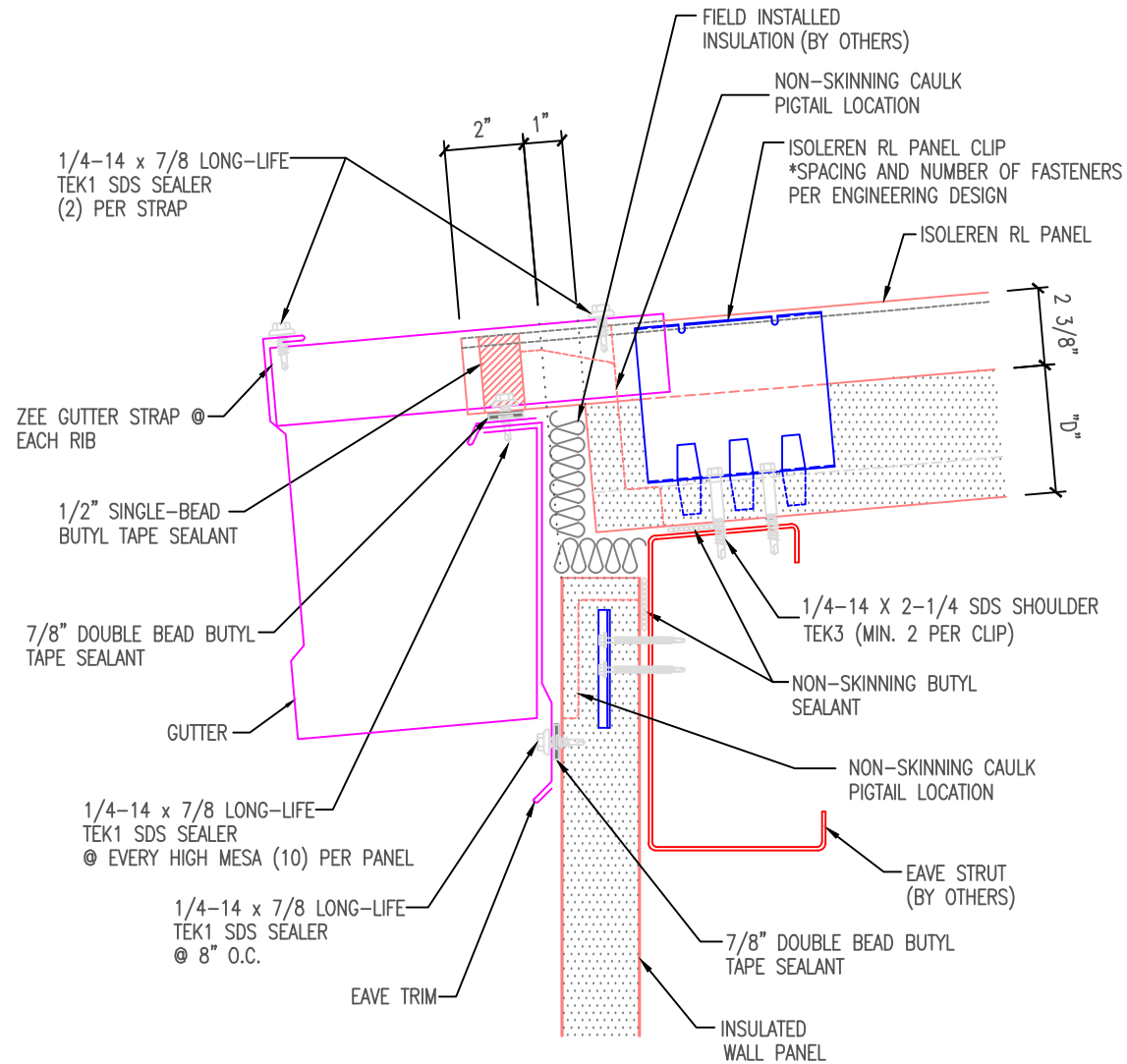
ATAS INTERNATIONAL, INC

Allentown PA  
610-395-8445  
Mesa AZ  
480-558-7210

TITLE			
Roof-Eave at Wall			
DWG. NO.		DR	DATE 8/2/2016
MATERIAL		APP	DATE
		SH. SIZE	SCALE X:X
P			

REV. NO.	DATE	DESCRIPTION OF REVISION	BY	APP

NOTE: FIELD REMOVE LINER AND INSULATION AT CUTBACK



NOTE:

1. "D" = ROOF PANEL THICKNESS (AVAILABLE THICKNESS = 2.5, 3, 4, 5, OR 6)
2. FIELD REMOVE LINER AND INSULATION AT CUTBACK
3. DIMENSIONS SHOWN ARE FOR 3" THICK ROOF PANEL. ADJUST DIMENSION PROPORTIONALLY FOR OTHER ROOF PANELS THICKNESS.
4. FILLER INSULATION MATERIAL AND APPLICATION IS SPECIFIED BY THE PROJECT DESIGNER.

\*\* THE DETAIL SHOWN IS SUBJECT TO CHANGE WITHOUT NOTICE.

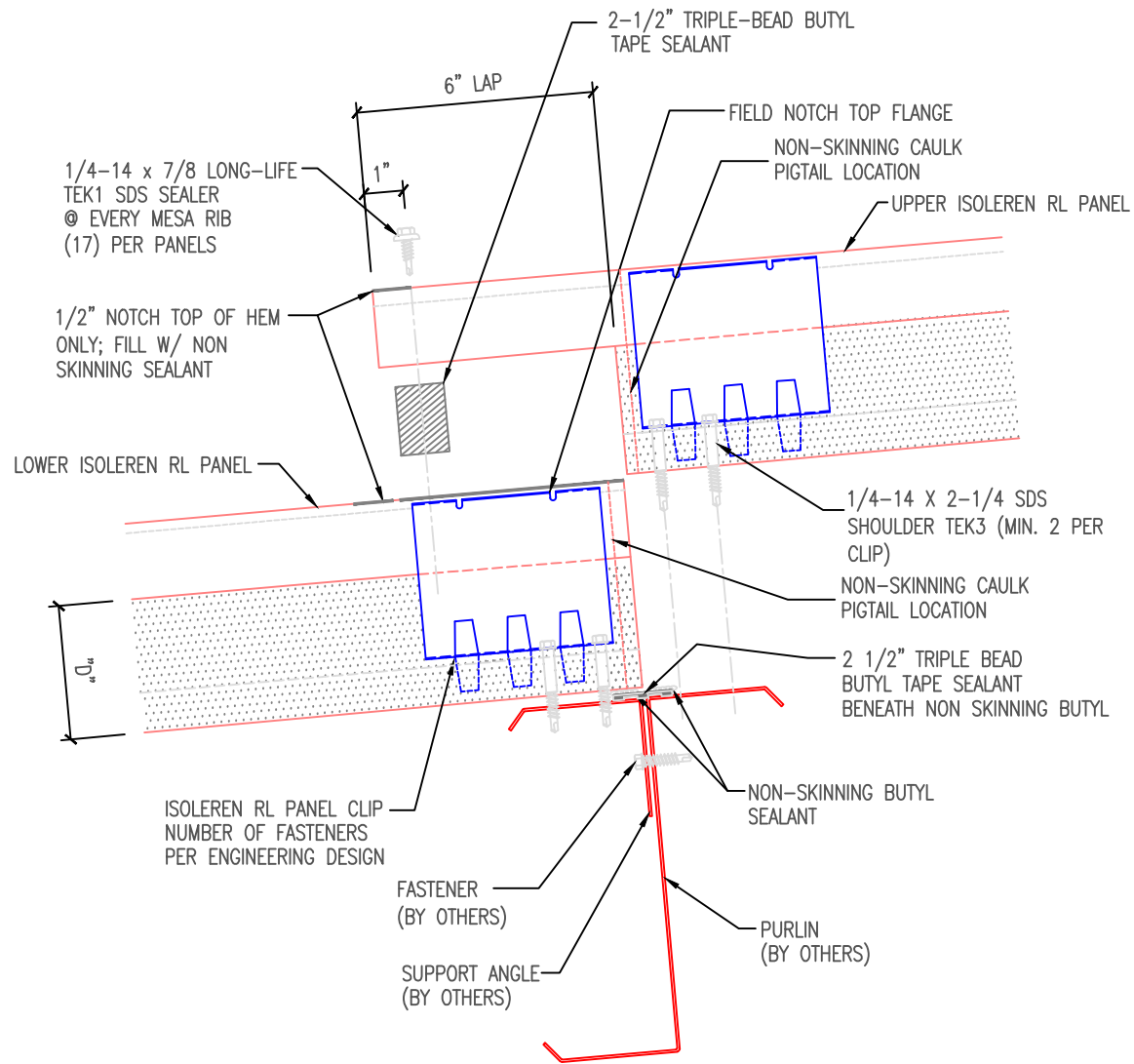


ATAS INTERNATIONAL, INC

Allentown PA  
610-395-8445  
Mesa AZ  
480-558-7210

TITLE			
Roof-Eave with Gutter			
DWG. NO.		DR	DATE 8/2/2016
		APP	DATE
MATERIAL		SH. SIZE	SCALE X:X

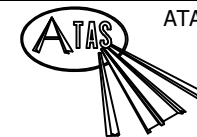
REV. NO.	DATE	DESCRIPTION OF REVISION	BY	APP



NOTE:

1. "D" = ROOF PANEL THICKNESS (AVAILABLE THICKNESS = 2.5, 3, 4, 5, OR 6)
2. FIELD REMOVE LINER AND INSULATION AT CUTBACK
3. DIMENSIONS SHOWN ARE FOR 3" THICK ROOF PANEL. ADJUST DIMENSION PROPORTIONALLY FOR OTHER ROOF PANELS THICKNESS.

\*\* THE DETAIL SHOWN IS SUBJECT TO CHANGE WITHOUT NOTICE.

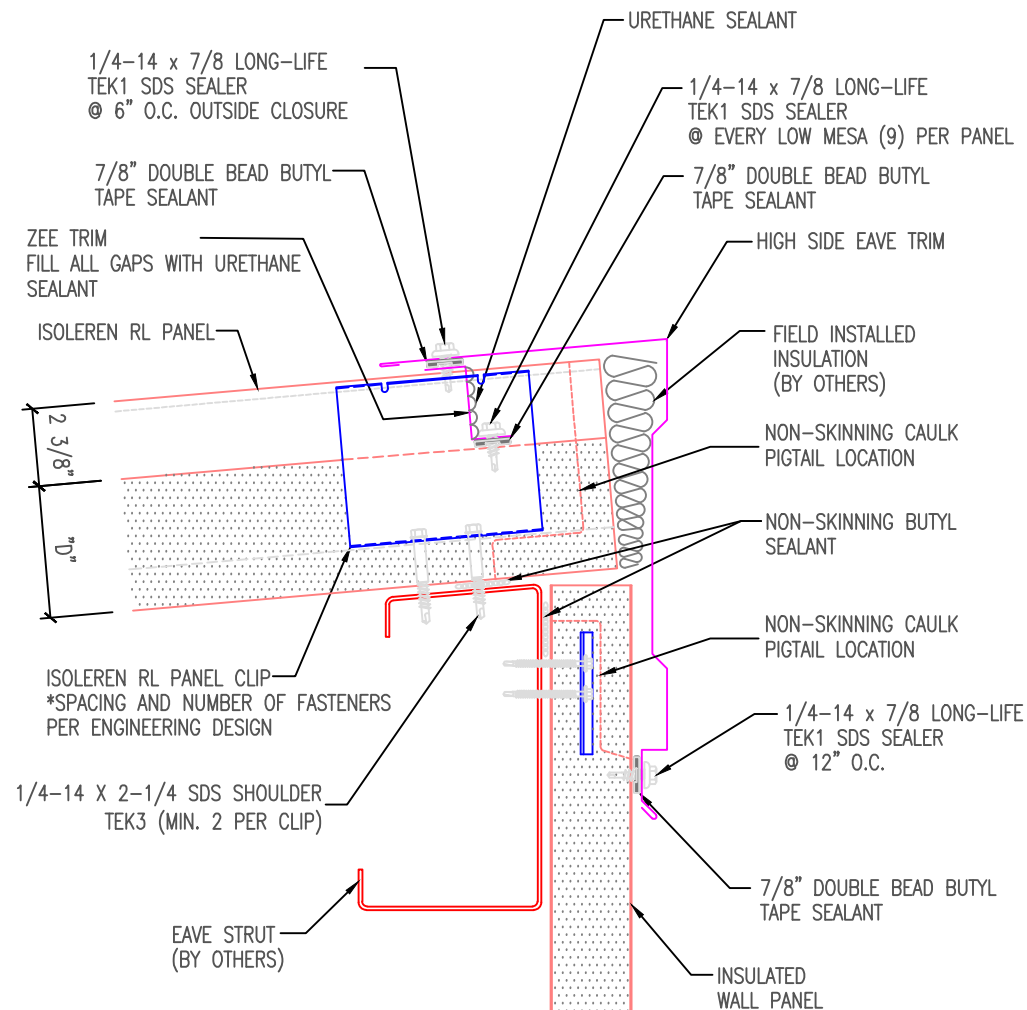


ATAS INTERNATIONAL, INC

Allentown PA  
610-395-8445  
Mesa AZ  
480-558-7210

TITLE			Roof-End Lap		
DWG. NO.		DR	DATE 8/2/2016		
		APP	DATE		
MATERIAL		SH. SIZE	SCALE X:X		

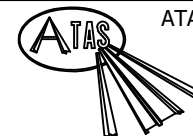
REV. NO.	DATE	DESCRIPTION OF REVISION	BY	APP



NOTE:

1. "D" = ROOF PANEL THICKNESS (AVAILABLE THICKNESS = 2.5, 3, 4, 5, OR 6)
2. DIMENSIONS SHOWN ARE FOR 3" THICK ROOF PANEL. ADJUST DIMENSION PROPORTIONALLY FOR OTHER ROOF PANELS THICKNESS.
3. FILLER INSULATION MATERIAL AND APPLICATION IS SPECIFIED BY THE PROJECT DESIGNER.
4. TRANSITION FLASHING IS INSTALLED WITH A PITCH  $\frac{1}{2}$ :12 GREATER THAN THE ROOF PITCH.

\*\* THE DETAIL SHOWN IS SUBJECT TO CHANGE WITHOUT NOTICE.

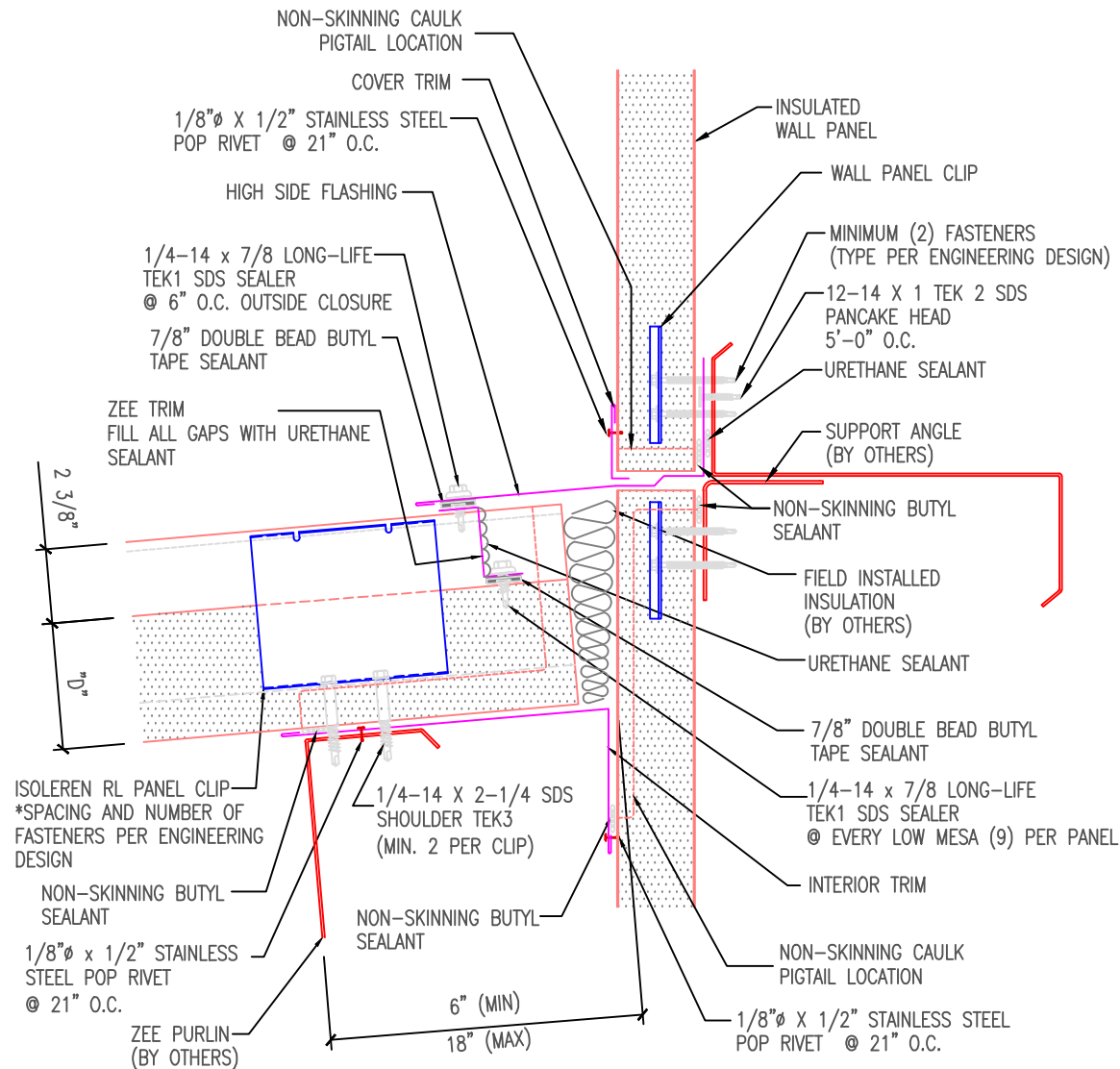


ATAS INTERNATIONAL, INC

Allentown PA  
610-395-8445  
Mesa AZ  
480-558-7210

TITLE			
Roof-High Eave			
DWG. NO.	DR		DATE 8/2/2016
	APP		DATE
MATERIAL	SH. SIZE		SCALE X:X

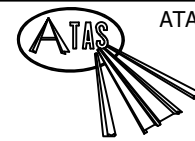
REV. NO.	DATE	DESCRIPTION OF REVISION	BY	APP



NOTE:

1. "D" = ROOF PANEL THICKNESS (AVAILABLE THICKNESS = 2.5, 3, 4, 5, OR 6)
2. DIMENSIONS SHOWN ARE FOR 3" THICK ROOF PANEL. ADJUST DIMENSION PROPORTIONALLY FOR OTHER ROOF PANELS THICKNESS.
3. FILLER INSULATION MATERIAL AND APPLICATION IS SPECIFIED BY THE PROJECT DESIGNER.
4. TRANSITION FLASHING IS INSTALLED WITH A PITCH 1/2:12 GREATER THAN THE ROOF PITCH.

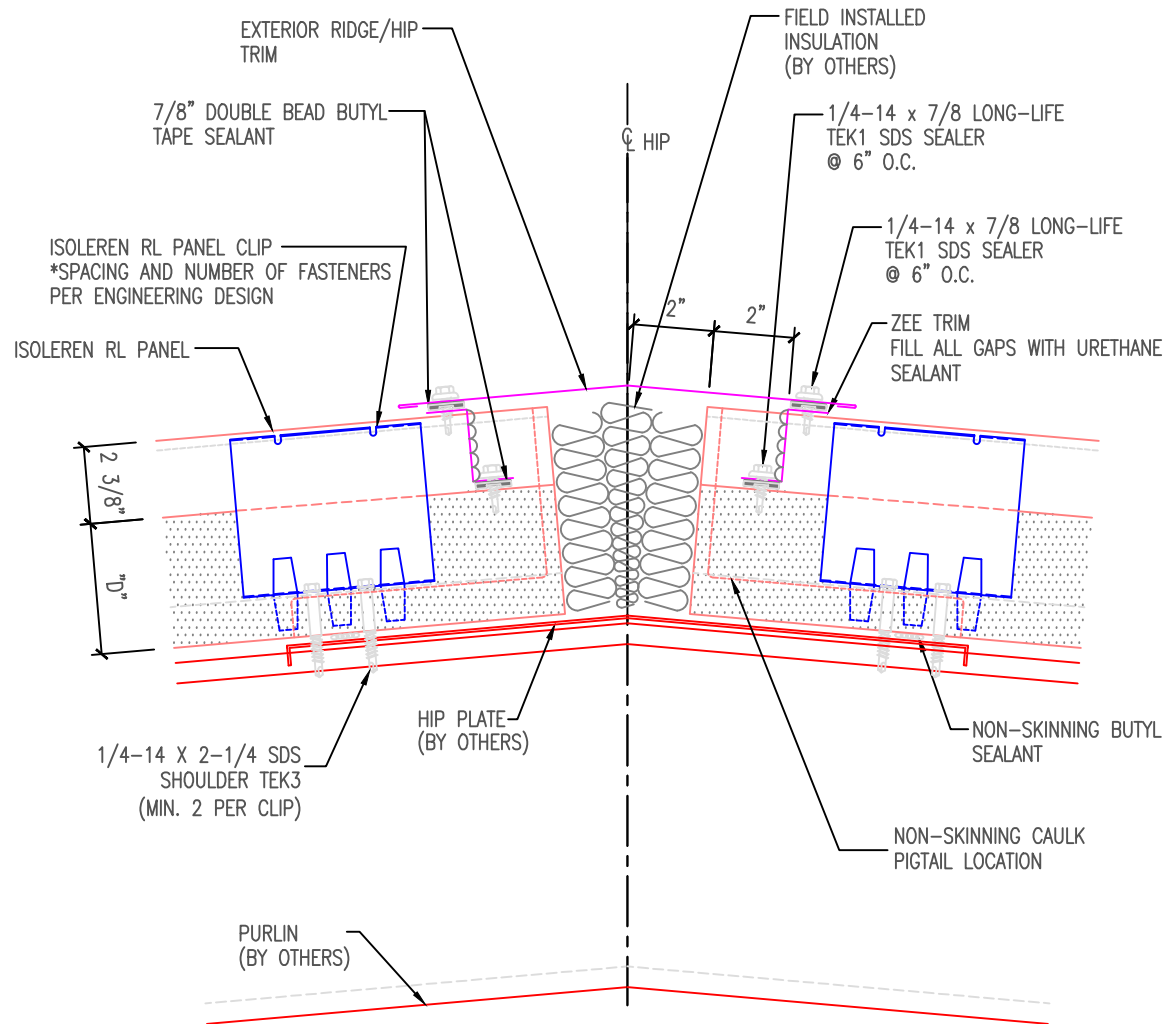
\*\* THE DETAIL SHOWN IS SUBJECT TO CHANGE WITHOUT NOTICE.



ATAS INTERNATIONAL, INC  
Allentown PA  
610-395-8445  
Mesa AZ  
480-558-7210

TITLE					
Roof-High Eave Parapet					
DWG. NO.			DR	DATE 8/2/2016	
			APP	DATE	
MATERIAL			SH. SIZE	SCALE X:X	

REV. NO.	DATE	DESCRIPTION OF REVISION	BY	APP



NOTE:

1. "D" = ROOF PANEL THICKNESS (AVAILABLE THICKNESS = 2.5, 3, 4, 5 OR 6)
2. DIMENSIONS SHOWN ARE FOR 3" THICK ROOF PANEL. ADJUST DIMENSION PROPORTIONALLY FOR OTHER ROOF PANELS THICKNESS.
3. FILLER INSULATION MATERIAL AND APPLICATION IS SPECIFIED BY THE PROJECT DESIGNER.

\*\* THE DETAIL SHOWN IS SUBJECT TO CHANGE WITHOUT NOTICE.

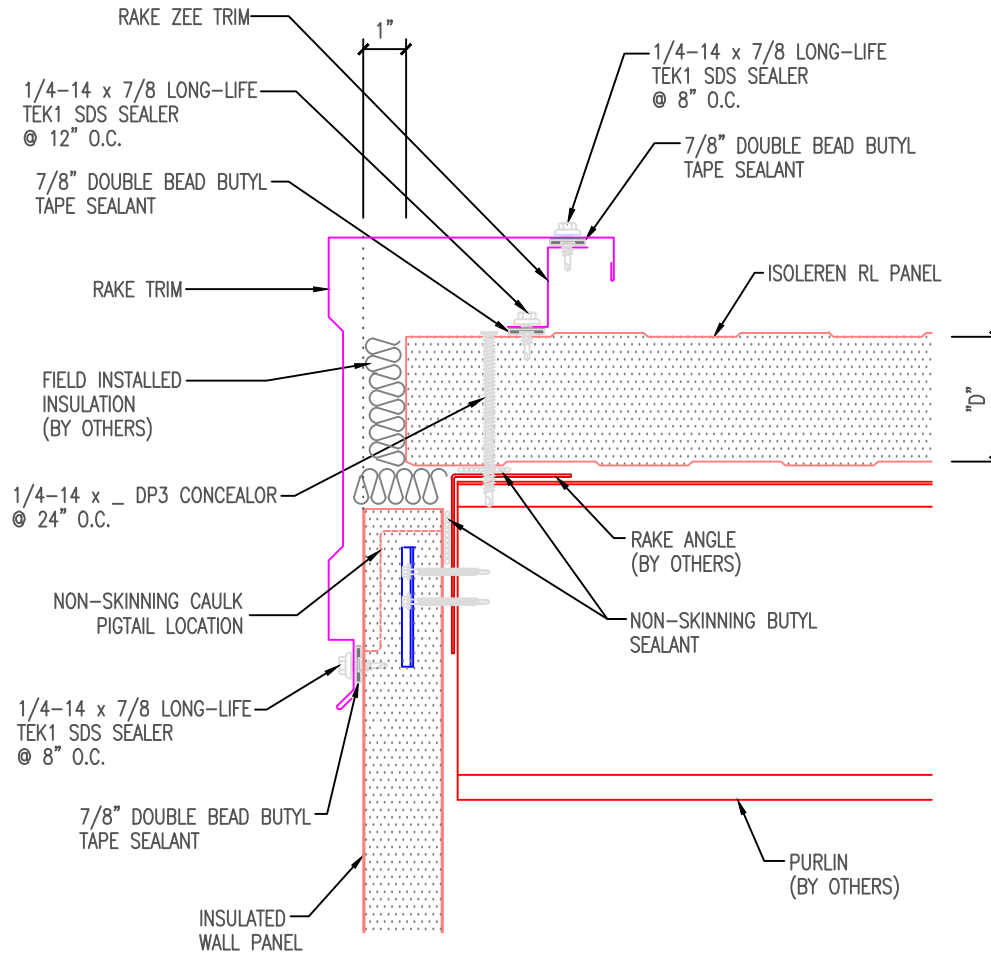


ATAS INTERNATIONAL, INC

Allentown PA  
610-395-8445  
Mesa AZ  
480-558-7210

Roof-Hip			
DWG. NO.		DR	DATE 8/2/2016
MATERIAL		APP	DATE
		SH. SIZE	SCALE X:X

REV. NO.	DATE	DESCRIPTION OF REVISION	BY	APP



NOTE:

1. "D" = ROOF PANEL THICKNESS (AVAILABLE THICKNESS = 2.5, 3, 4, 5, OR 6)
2. DIMENSIONS SHOWN ARE FOR 3" THICK ROOF PANEL. ADJUST DIMENSION PROPORTIONALLY FOR OTHER ROOF PANELS THICKNESS.
3. FILLER INSULATION MATERIAL AND APPLICATION IS SPECIFIED BY THE PROJECT DESIGNER.

\*\* THE DETAIL SHOWN IS SUBJECT TO CHANGE WITHOUT NOTICE.



ATAS INTERNATIONAL, INC

Allentown PA

610-395-8445

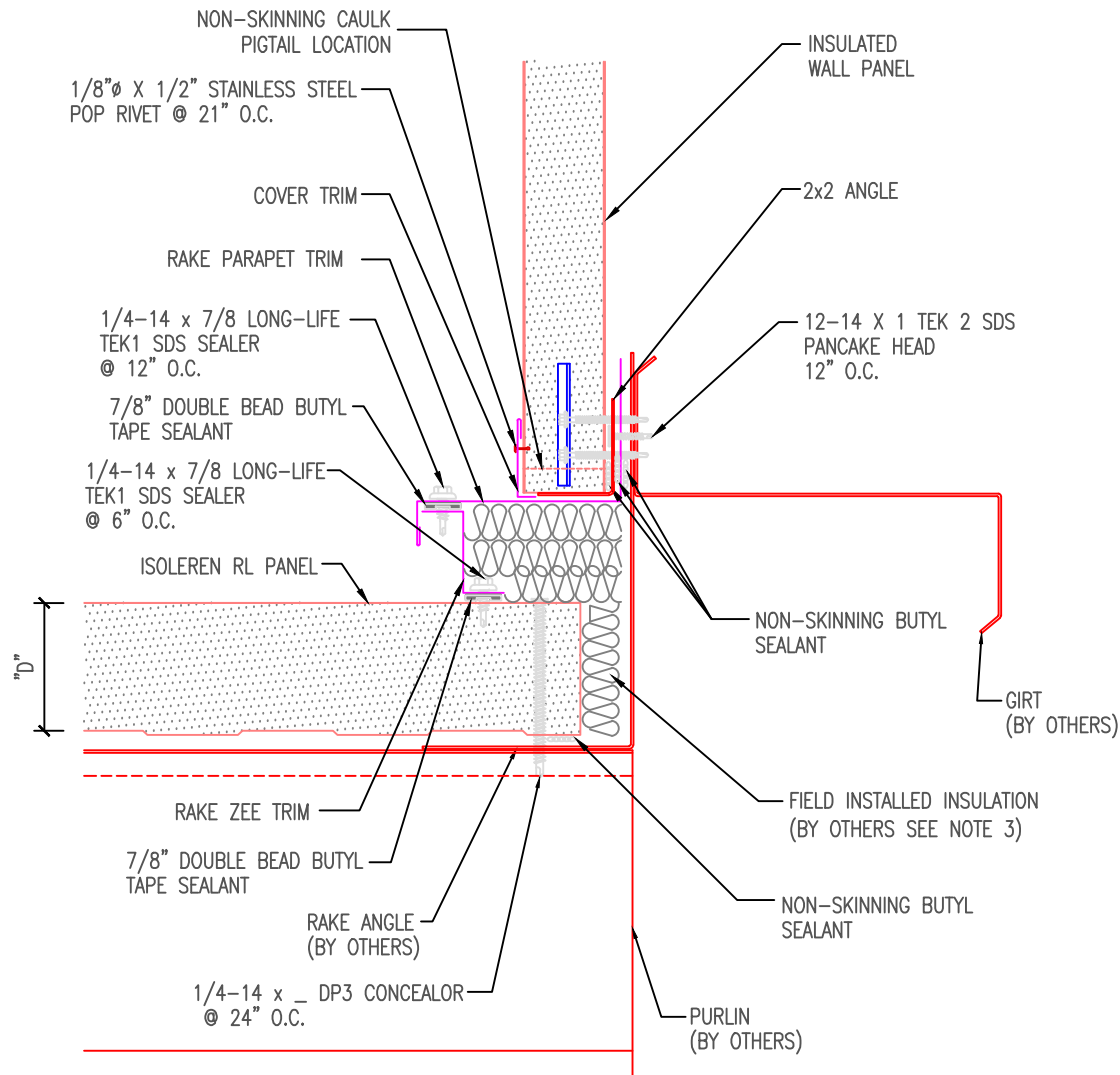
Mesa AZ

480-558-7210

TITLE			
Roof-Rake at Wall			
DWG. NO.	DR		DATE 8/2/2016
	APP		DATE
MATERIAL	SH. SIZE		SCALE X:X

REV. NO.	DATE	DESCRIPTION OF REVISION	BY	APP



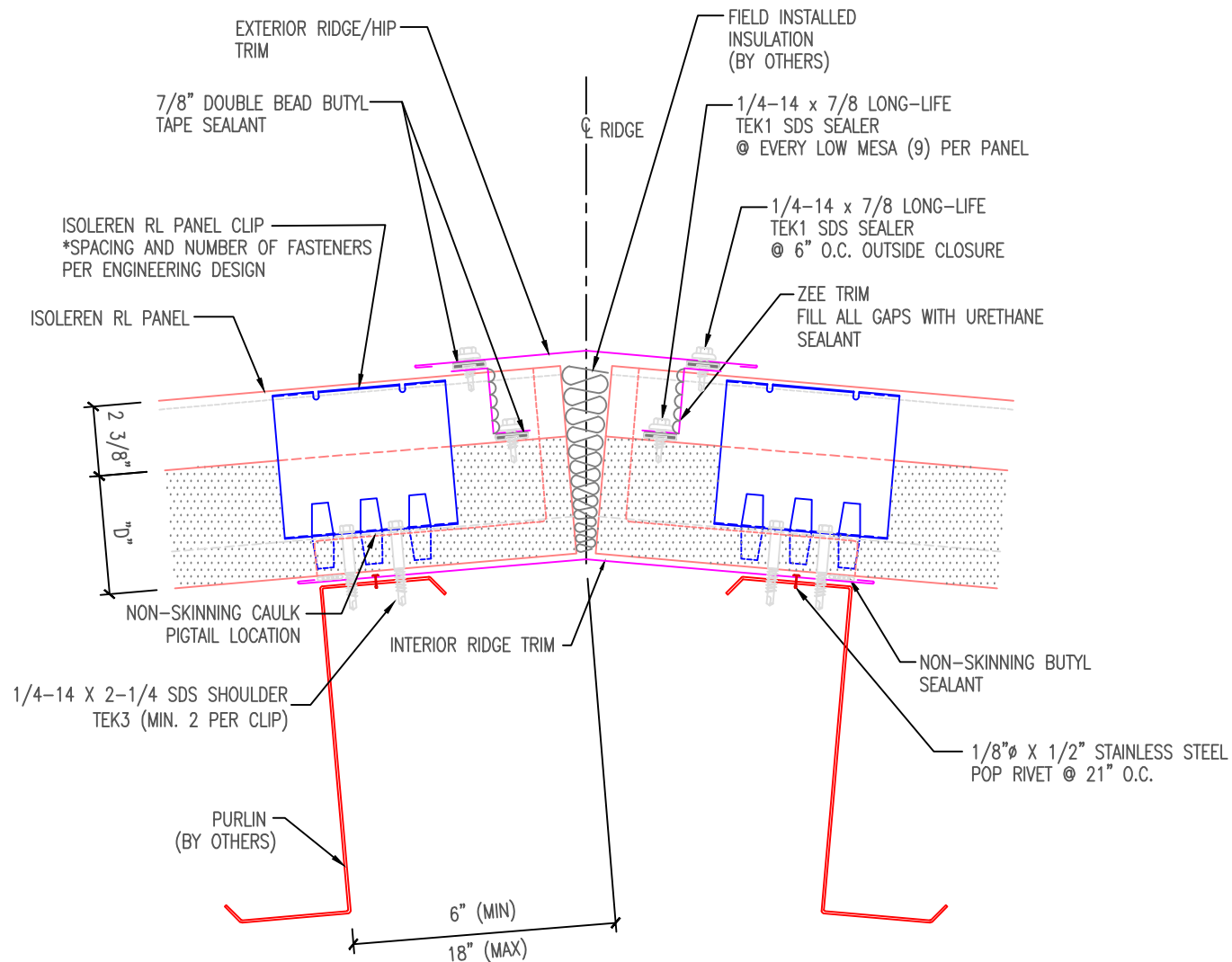


NOTE:

1. "D" = ROOF PANEL THICKNESS (AVAILABLE THICKNESS = 2.5, 3, 4, 5, OR 6)
2. "W" = WALL PANEL THICKNESS.
3. FILLER INSULATION MATERIAL AND APPLICATION IS SPECIFIED BY THE PROJECT DESIGNER. DIMENSIONS SHOWN ARE FOR 3" THICK ROOF PANEL. ADJUST DIMENSION PROPORTIONALLY FOR OTHER ROOF PANELS THICKNESS.
4. TRANSITION FLASHING IS INSTALLED WITH A PITCH  $\frac{1}{2}$ :12 GREATER THAN THE ROOF PITCH.

\*\* THE DETAIL SHOWN IS SUBJECT TO CHANGE WITHOUT NOTICE.

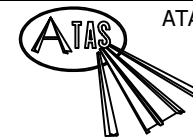
					Roof-Rake Parapet			
					DWG. NO.		DR	DATE 8/2/2016
					MATERIAL		APP	DATE
REV. NO.	DATE	DESCRIPTION OF REVISION			BY	APP	SH. SIZE	SCALE X:X



NOTE:

1. "D" = ROOF PANEL THICKNESS (AVAILABLE THICKNESS = 2.5, 3, 4, 5, OR 6)
2. DIMENSIONS SHOWN ARE FOR 3" THICK ROOF PANEL. ADJUST DIMENSION PROPORTIONALLY FOR OTHER ROOF PANELS THICKNESS.
3. FILLER INSULATION MATERIAL AND APPLICATION IS SPECIFIED BY THE PROJECT DESIGNER.

\*\* THE DETAIL SHOWN IS SUBJECT TO CHANGE WITHOUT NOTICE.



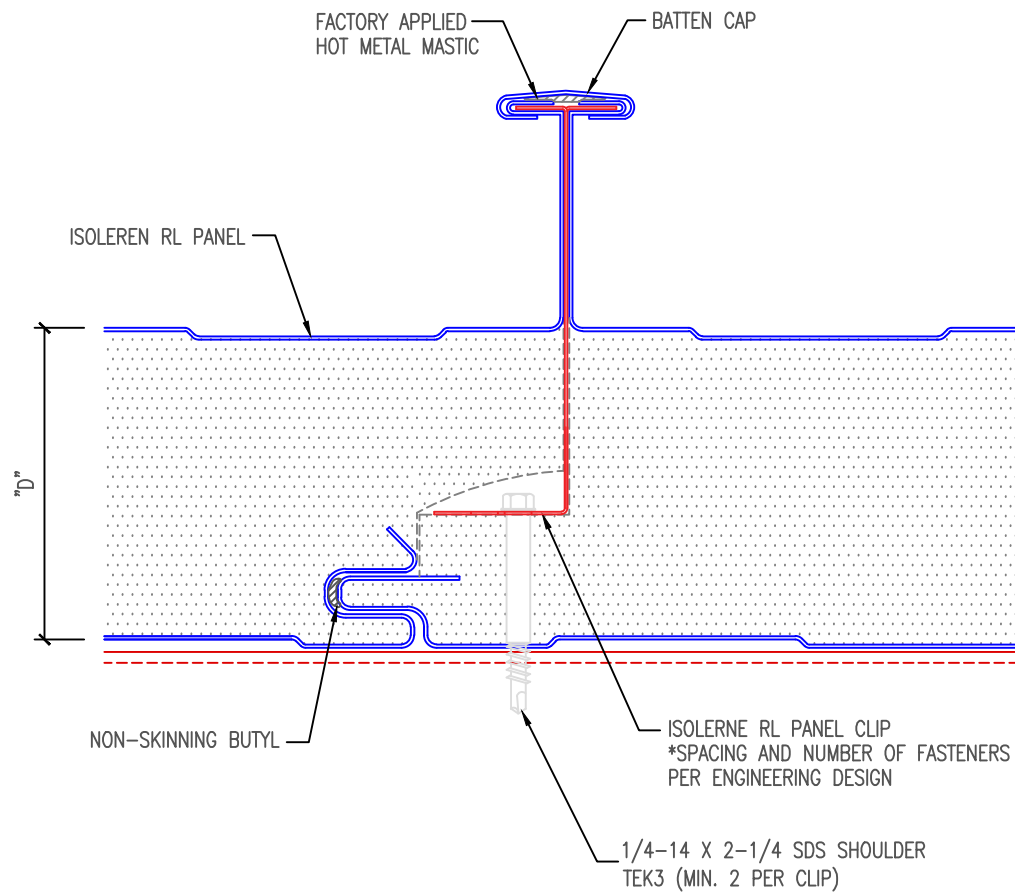
ATAS INTERNATIONAL, INC  
Allentown PA  
610-395-8445  
Mesa AZ  
480-558-7210

TITLE		Roof-Ridge	
DWG. NO.	DR	DATE	8/2/2016
MATERIAL	APP	DATE	
REV. NO.	SH. SIZE	SCALE	X:X

REV. NO.	DATE	DESCRIPTION OF REVISION	BY	APP

NOTE: DO NOT OVER DRIVE FASTENERS.

FASTENING SCHEDULE WILL VARY  
DEPENDING ON SPECIFIC APPLICATION

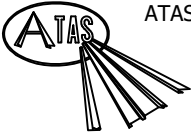


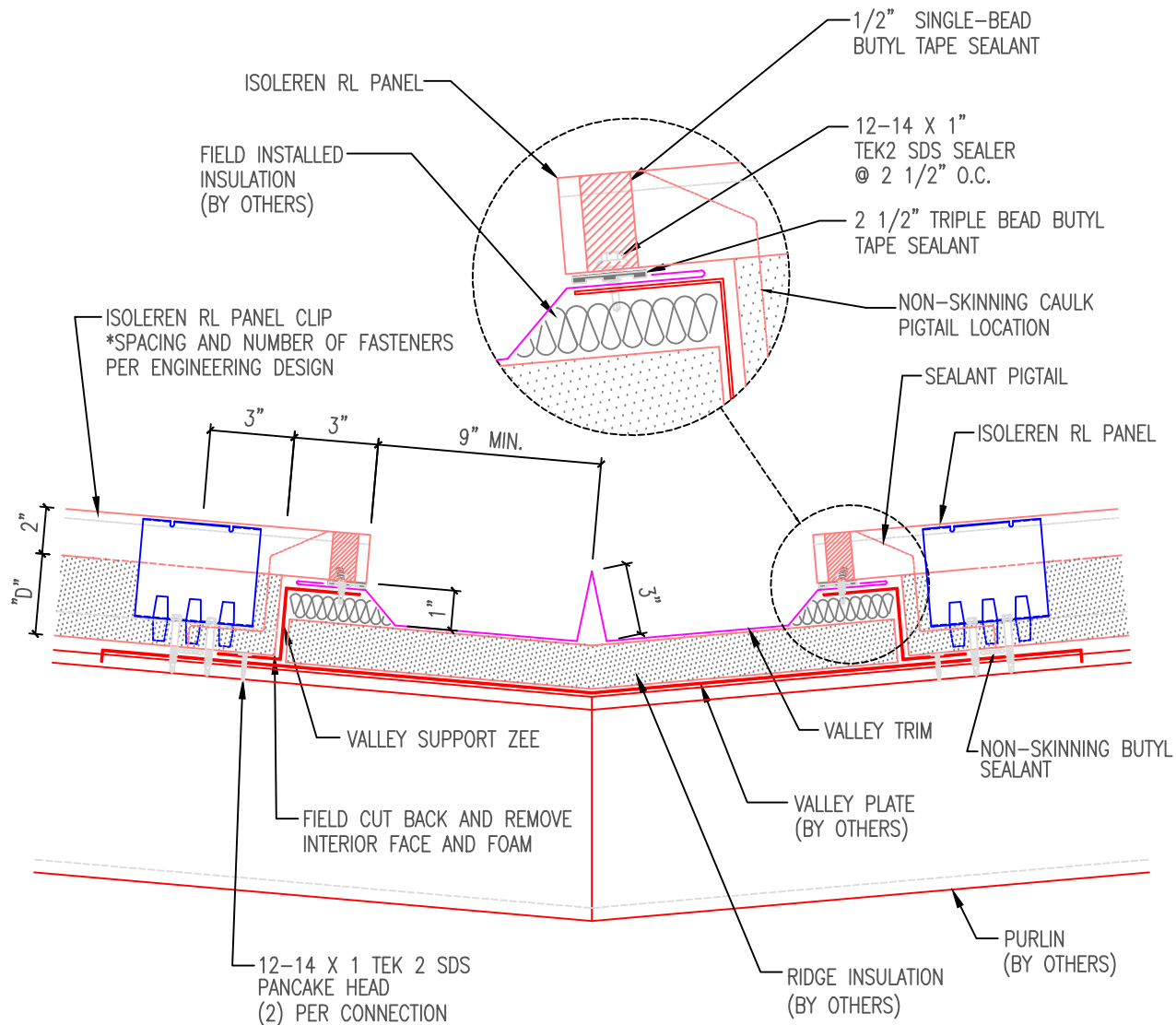
NOTE:

1. "D" = ROOF PANEL THICKNESS (AVAILABLE THICKNESS = 2.5, 3, 4, 5, OR 6)

\*\* THE DETAIL SHOWN IS SUBJECT TO CHANGE WITHOUT NOTICE.

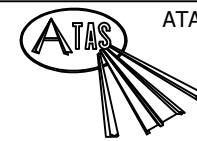
REV. NO.	DATE	DESCRIPTION OF REVISION	BY	APP

	ATAS INTERNATIONAL, INC	
	Allentown PA 610-395-8445 Mesa AZ 480-558-7210	
TITLE		Roof-Side Lap
DWG. NO.		DR 8/2/2016
MATERIAL		APP DATE
		SH. SIZE SCALE X:X



# NOTES:

- "D" = ROOF PANEL THICKNESS (AVAILABLE THICKNESS = 2.5, 3, 4, 5, OR 6)
- FILLER INSULATION MATERIAL AND APPLICATION IS SPECIFIED BY THE PROJECT DESIGNER.
- VALLEY CONDITIONS ARE NOT RECOMMENDED FOR APPLICATIONS WITH ROOF PITCH LESS THAN 3:12.
- THE VALLEY PAN WIDTH VARIES WITH THE ROOF'S DRAINAGE REQUIREMENTS.
- RECOMMENDED VALLEY PAN IS 16 GA. MIN. STEEL, WELDED WATER-TIGHT AND COATED OR LINED WITH MEMBRANE.



ATAS INTERNATIONAL, INC  
Allentown PA  
610-395-8445  
Mesa AZ  
480-558-7210

TITLE		
Roof-Valley		
DWG. NO.	DR	DATE 8/2/2016
MATERIAL	APP	DATE
SH. SIZE	SCALE	X:X

REV. NO.	DATE	DESCRIPTION OF REVISION	BY	APP