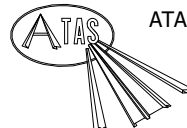


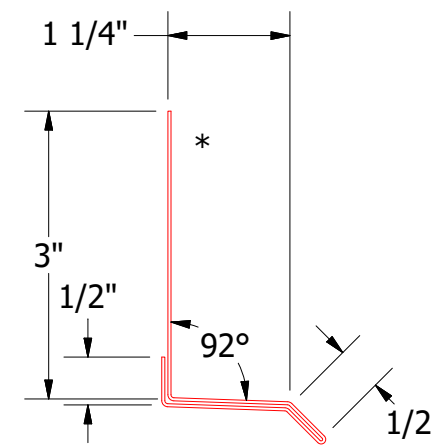
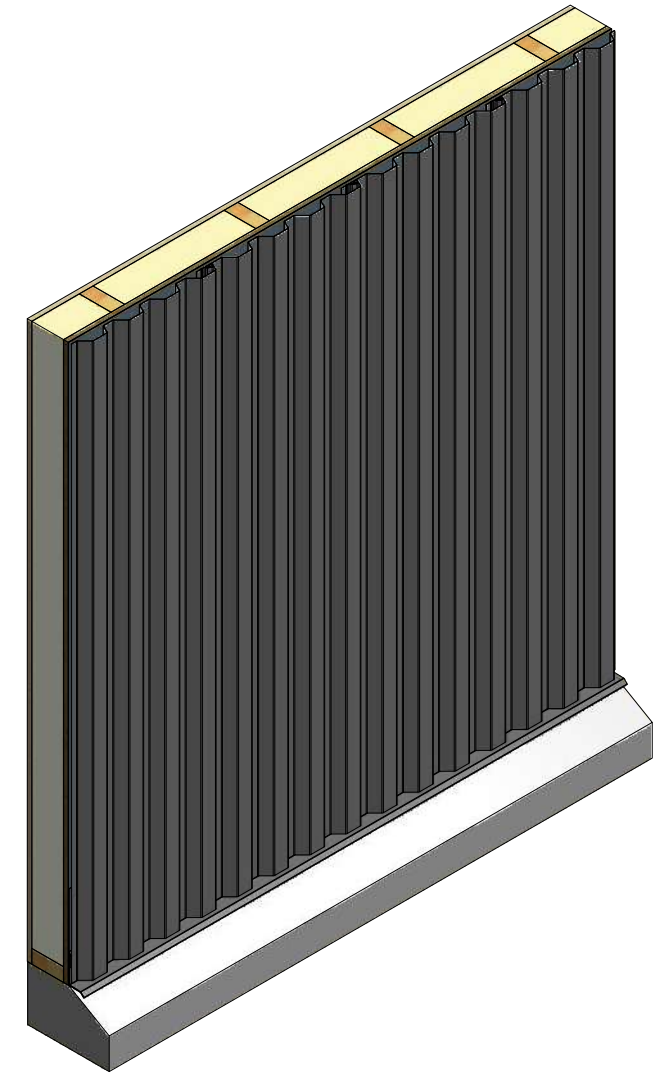
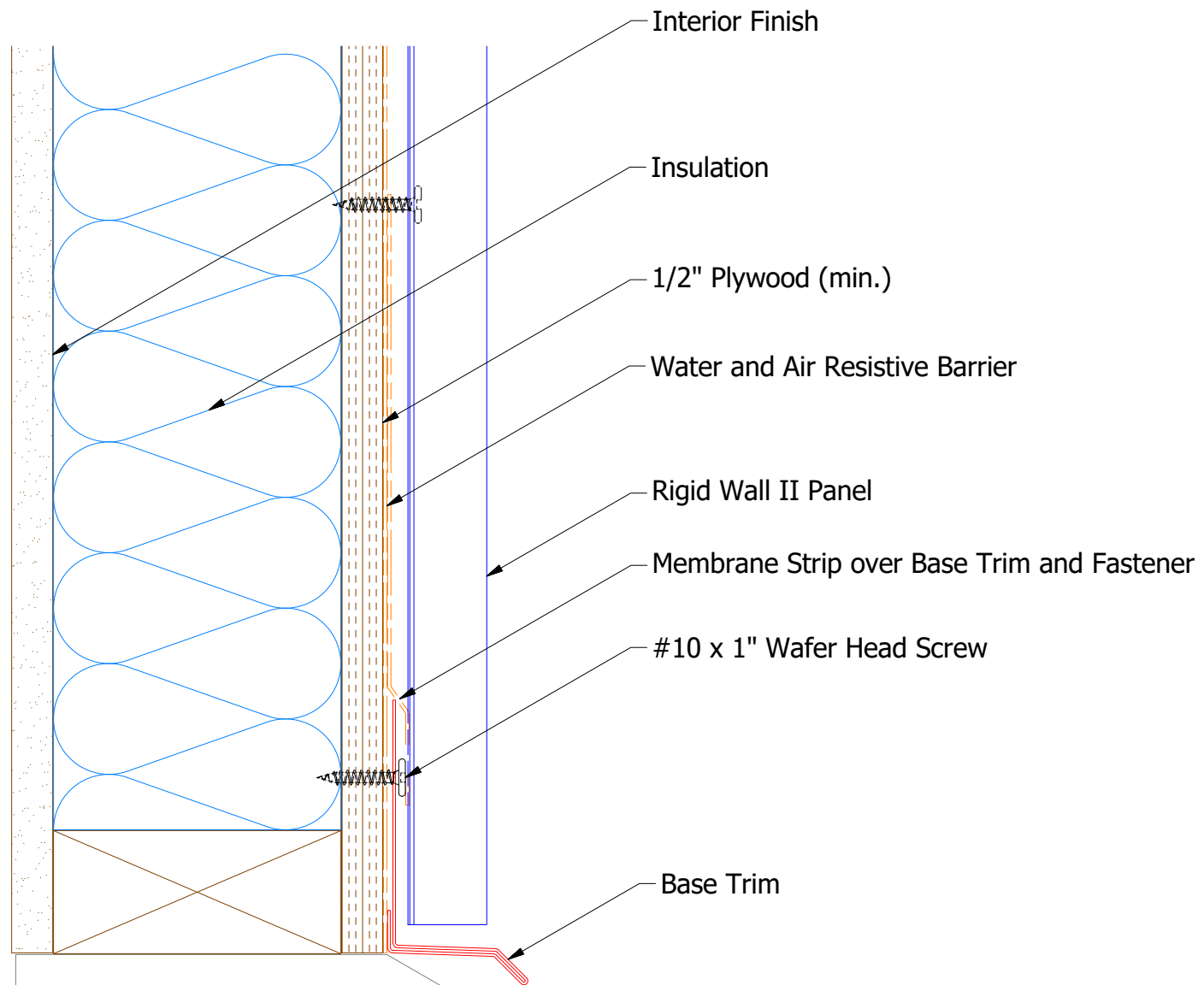
REV. NO.	DATE	DESCRIPTION OF REVISION	BY	APP


**ATAS INTERNATIONAL, INC**  
 Allentown PA  
 610-395-8445  
 Mesa AZ  
 480-558-7210

**TITLE** Rigid Wall II Panel Detail  
**DWG. NO.**      **DR** DMR      **DATE** 7/11/2016  
                          **APP** DAS      **DATE** 7/25/16  
**MATERIAL**      **SH. SIZE** B      **SCALE** X:X



# Vertical Panel



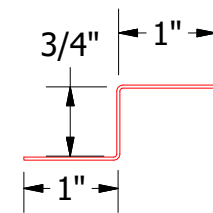
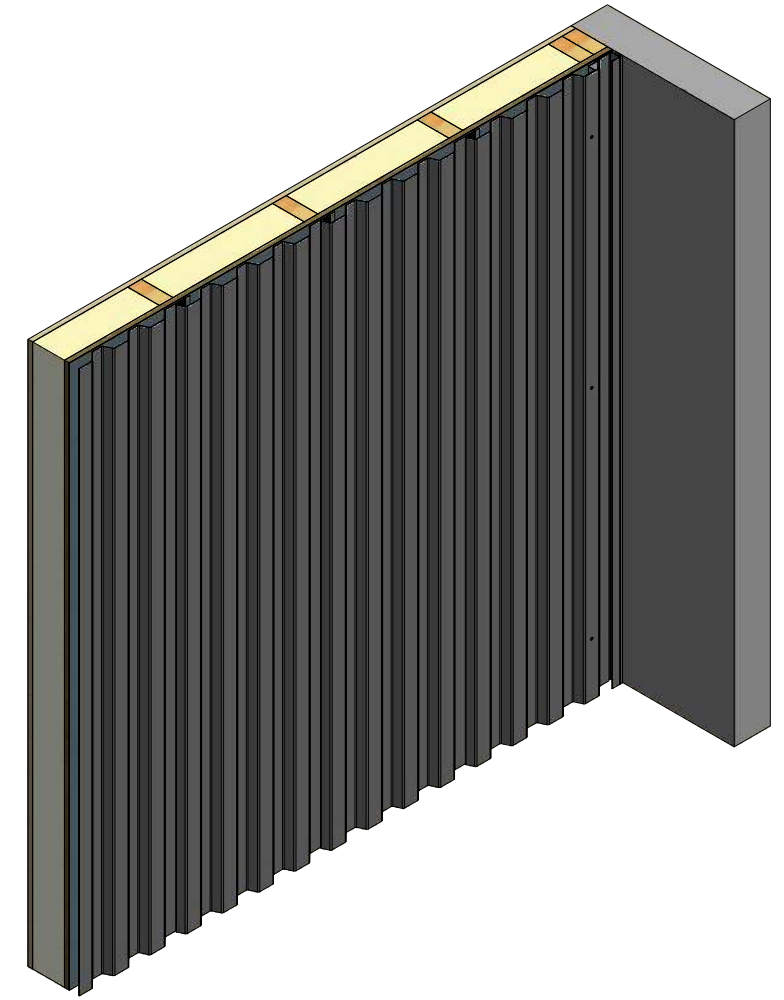
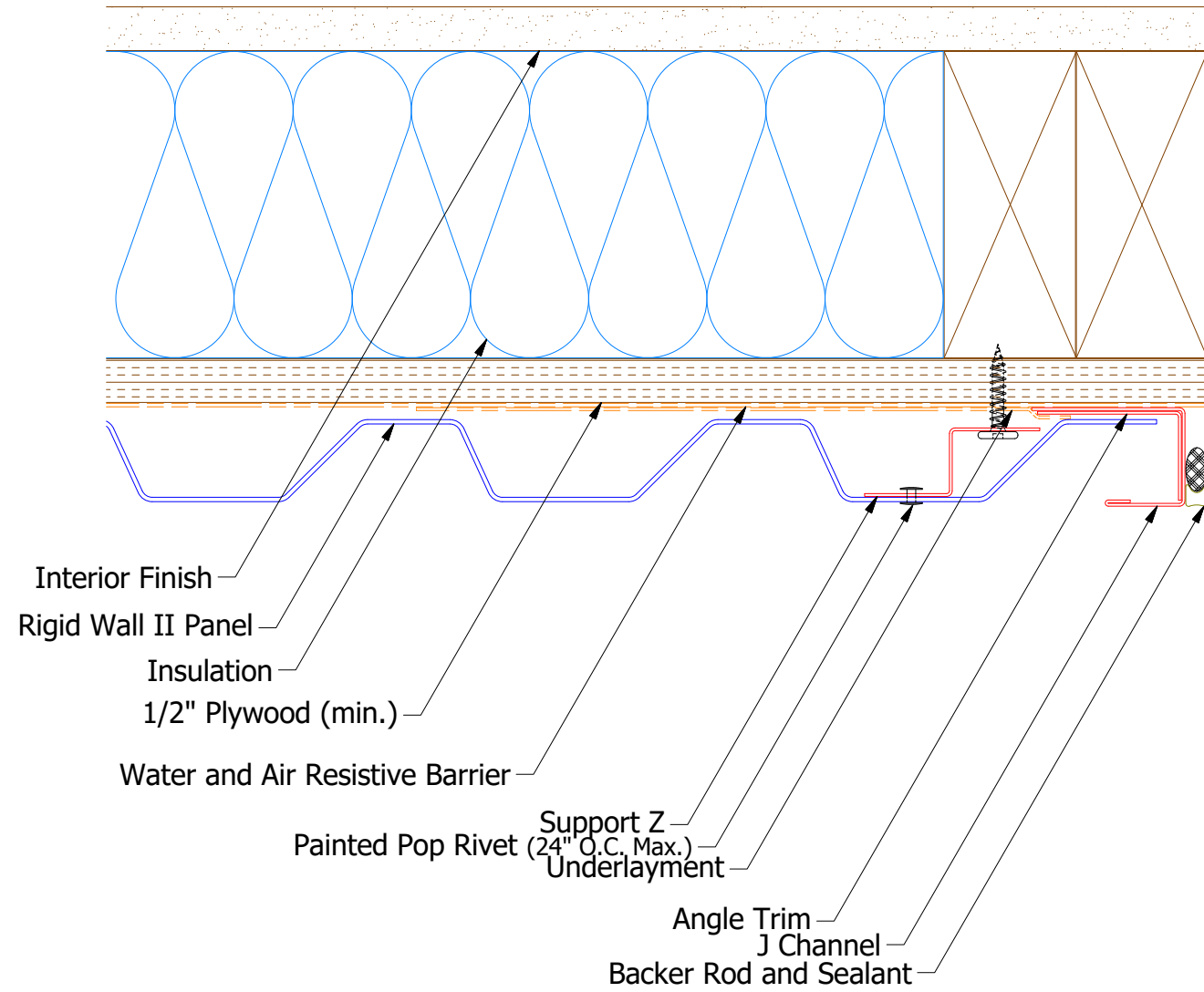
MCA661 - Base Trim

**ATAS** ATAS INTERNATIONAL, INC  
 Allentown PA  
 610-395-8445  
 Mesa AZ  
 480-558-7210

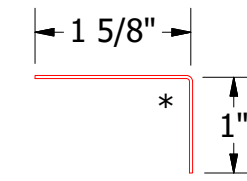
TITLE **Rigid Wall II Base Detail**

REV. NO.	DATE	DESCRIPTION OF REVISION	BY	APP	DWG. NO.	DR	DMR	DATE	7/11/2016
						APP	DAS	DATE	7/25/16
						SH. SIZE	B	SCALE	X:X

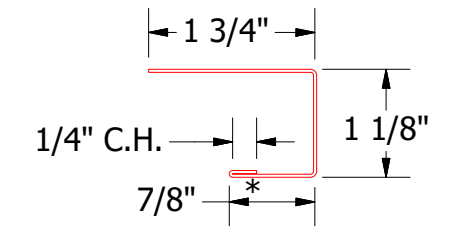
# Vertical Panel



MCA681 - Support Z



MCA680 - Angle Trim



MCA118 - J Channel

REV. NO.	DATE	DESCRIPTION OF REVISION	BY	APP

**ATAS** ATAS INTERNATIONAL, INC  
 Allentown PA  
 610-395-8445  
 Mesa AZ  
 480-558-7210

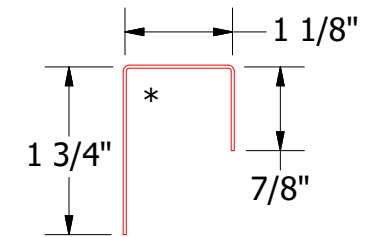
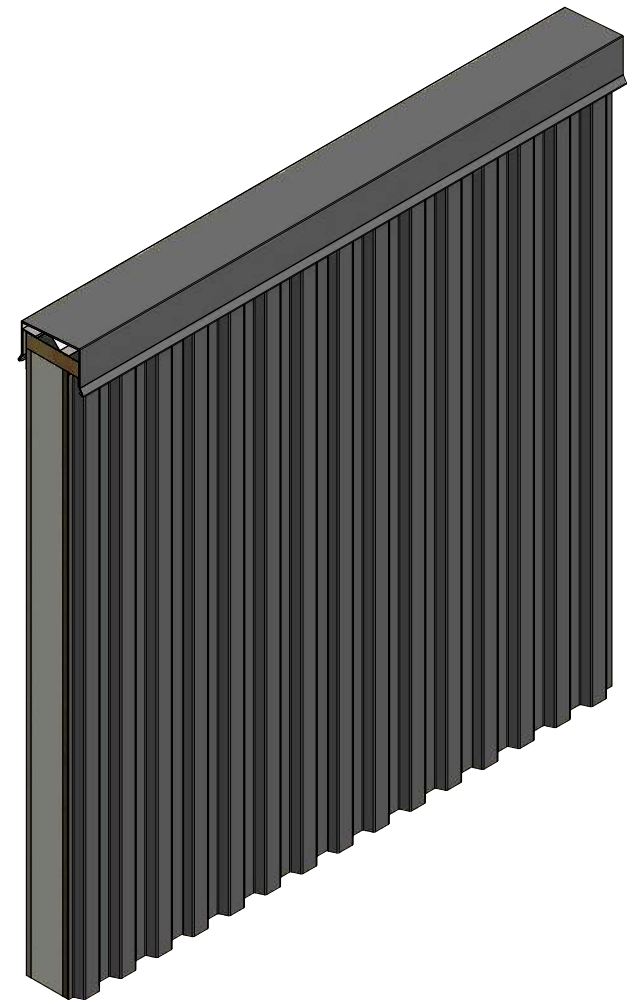
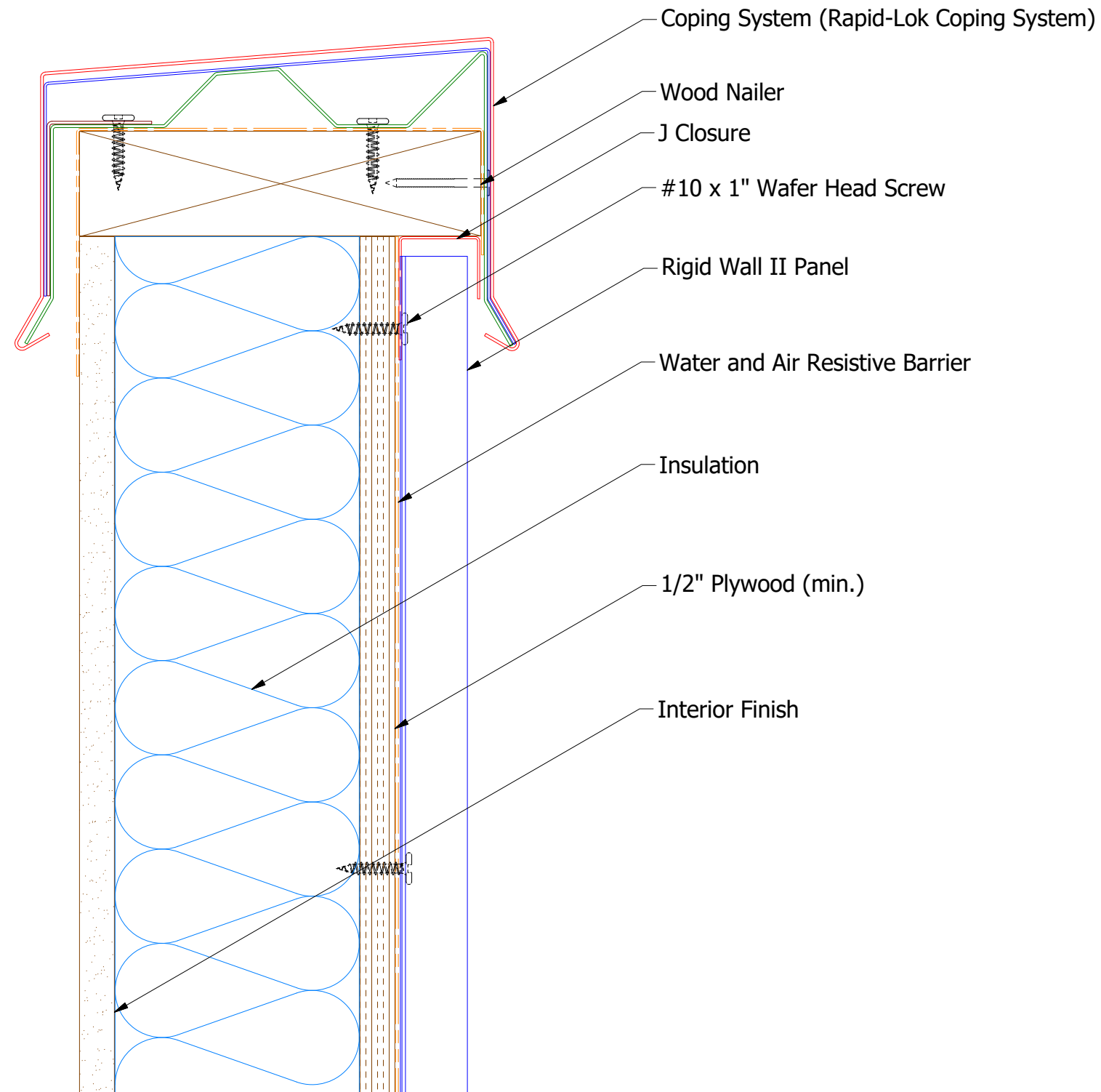
TITLE: Rigid Wall II Endwall Detail

DWG. NO.	DR MBP	DATE 7/11/2016
MATERIAL	APP DAS	DATE 7/25/16
SH. SIZE	B	SCALE X:X





# Vertical Panel



MCA270 - J Closure

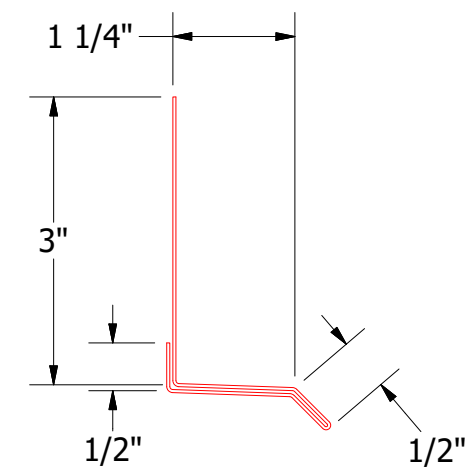
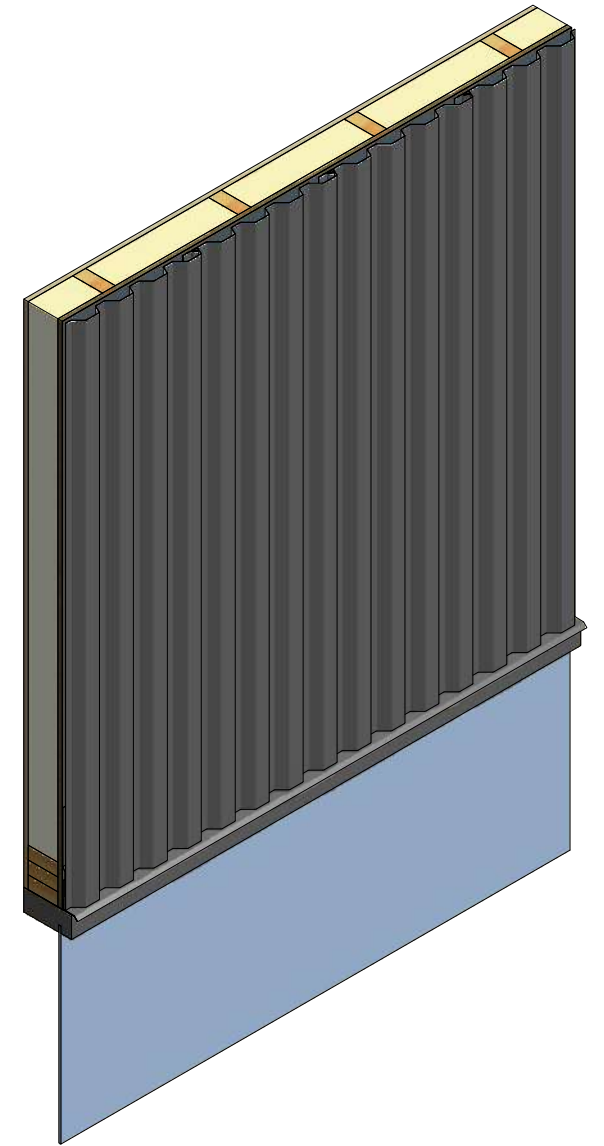
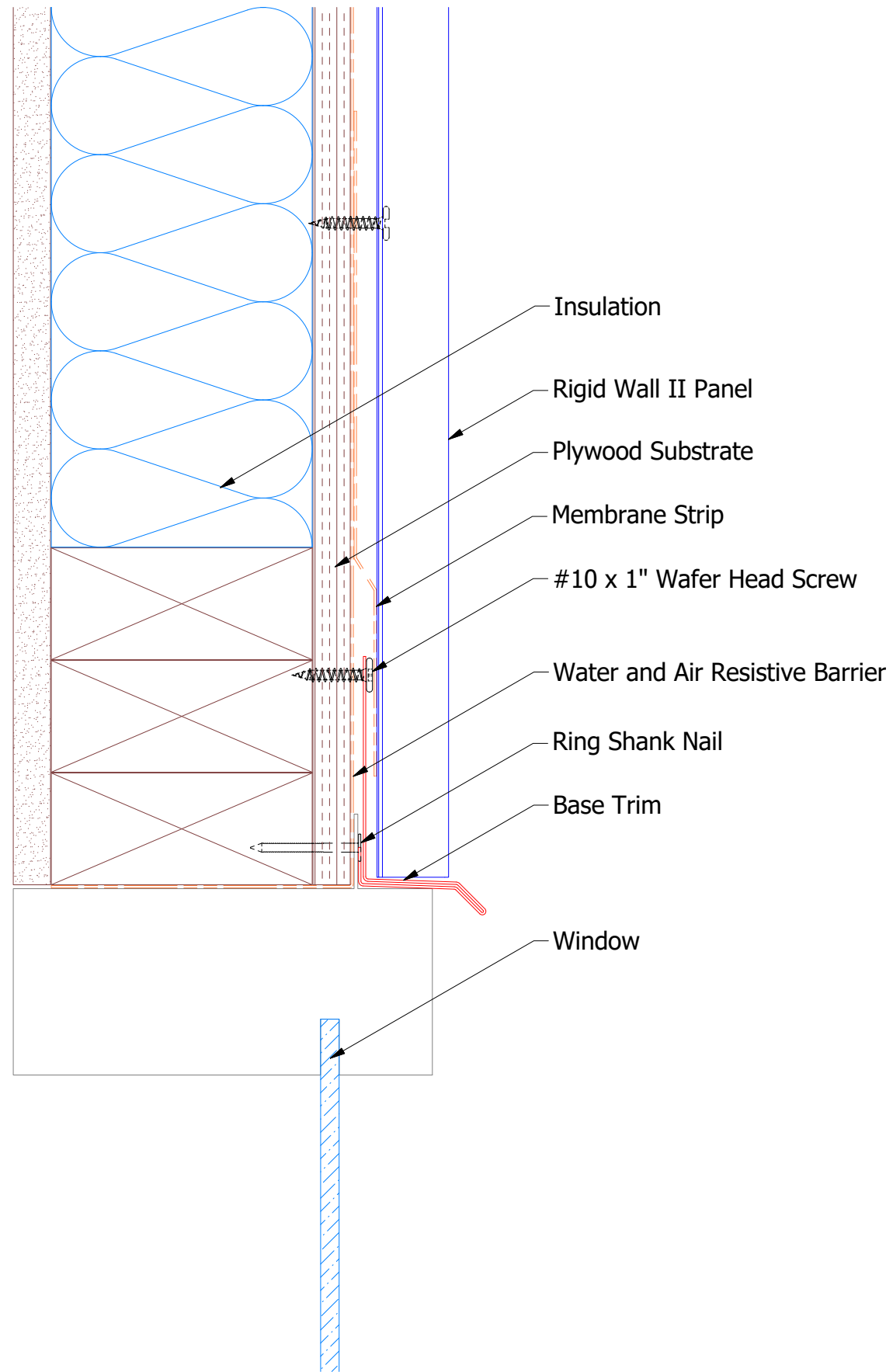


**ATAS INTERNATIONAL, INC**  
 Allentown PA  
 610-395-8445  
 Mesa AZ  
 480-558-7210

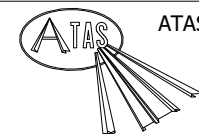
TITLE **Rigid Wall II Top of Wall Detail**

REV. NO.	DATE	DESCRIPTION OF REVISION	BY	APP	DWG. NO.	DR	DATE
						MBP	7/11/2016
						DAS	7/25/16
					MATERIAL	SH. SIZE	SCALE
						B	X:X

# Vertical Panel



MCA661 - Base Trim

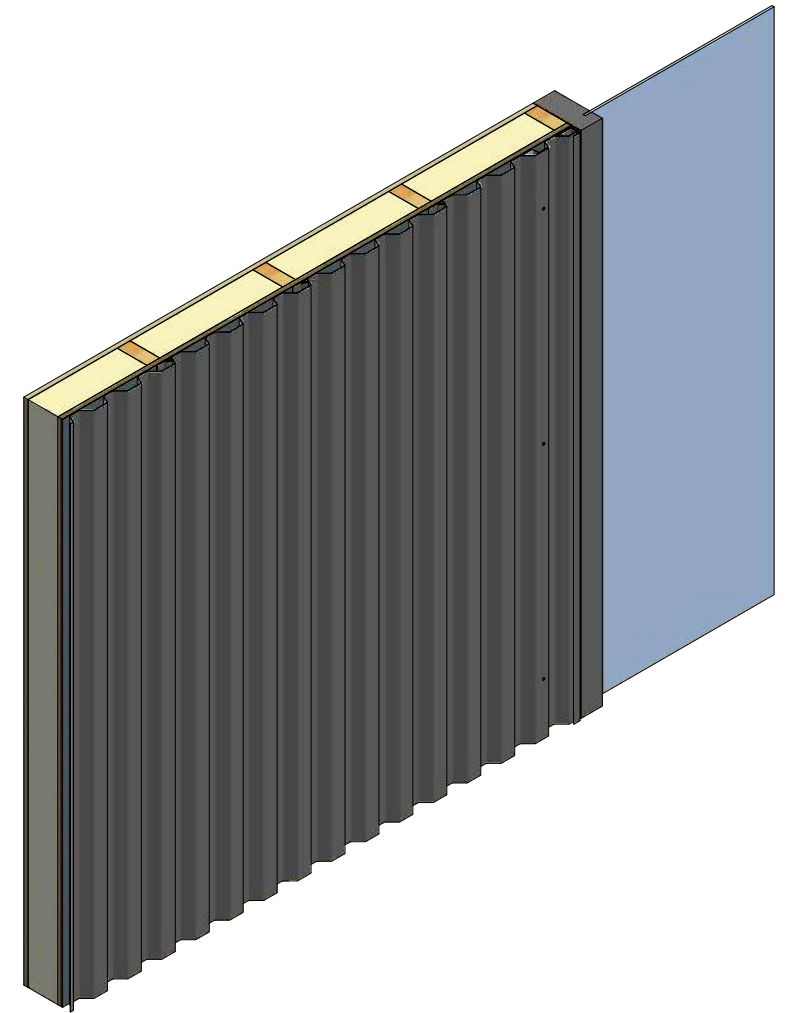
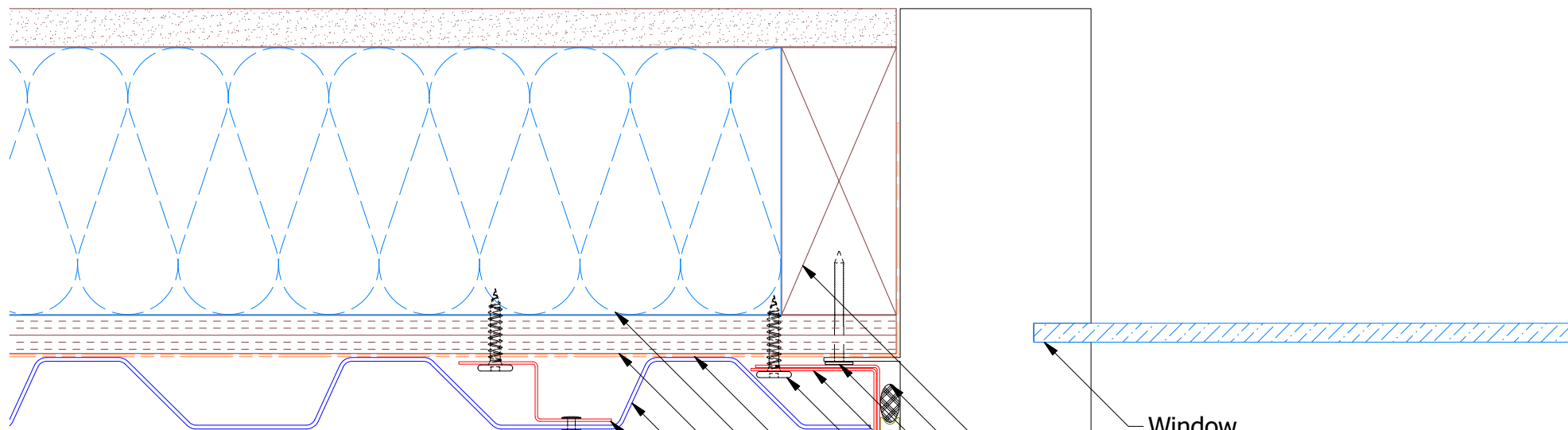


ATAS INTERNATIONAL, INC  
 Allentown PA  
 610-395-8445  
 Mesa AZ  
 480-558-7210

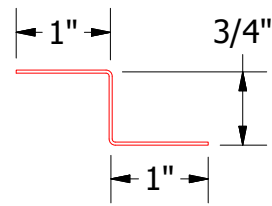
TITLE  
**Rigid Wall II Head Window Flange Detail**

REV. NO.	DATE	DESCRIPTION OF REVISION	BY	APP	DWG. NO.	DR	JAC	DATE	8/1/2018
						APP		DATE	
					MATERIAL	SH. SIZE	B	SCALE	X:X

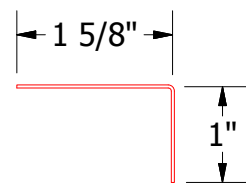




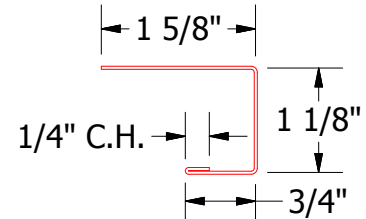
- Window
- Trim Board
- Backer Rod and Sealant
- Ring Shank Nail
- Angle Trim
- #10 x 1" Wafer Head Screw
- J Channel
- ATA - Guard
- Insulation
- Plywood Substrate
- Rigid Wall II Panel
- Support Z
- S.S. Painted Pop Rivet  
24" O.C.



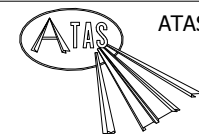
MCA681 - Support Z



MCA680 - Angle Trim



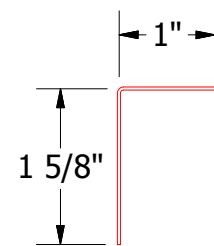
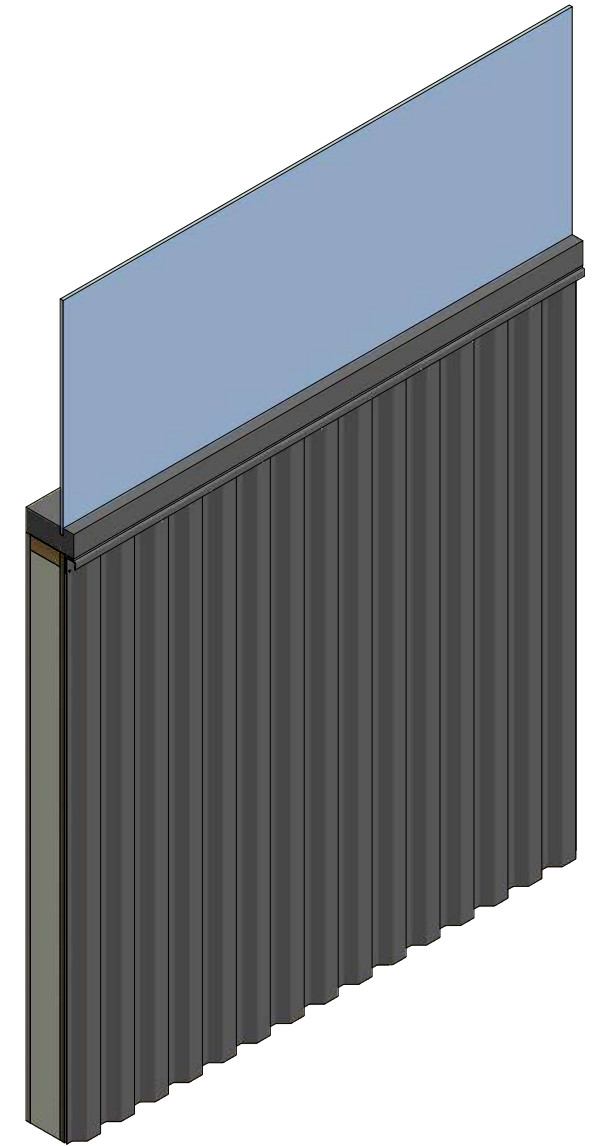
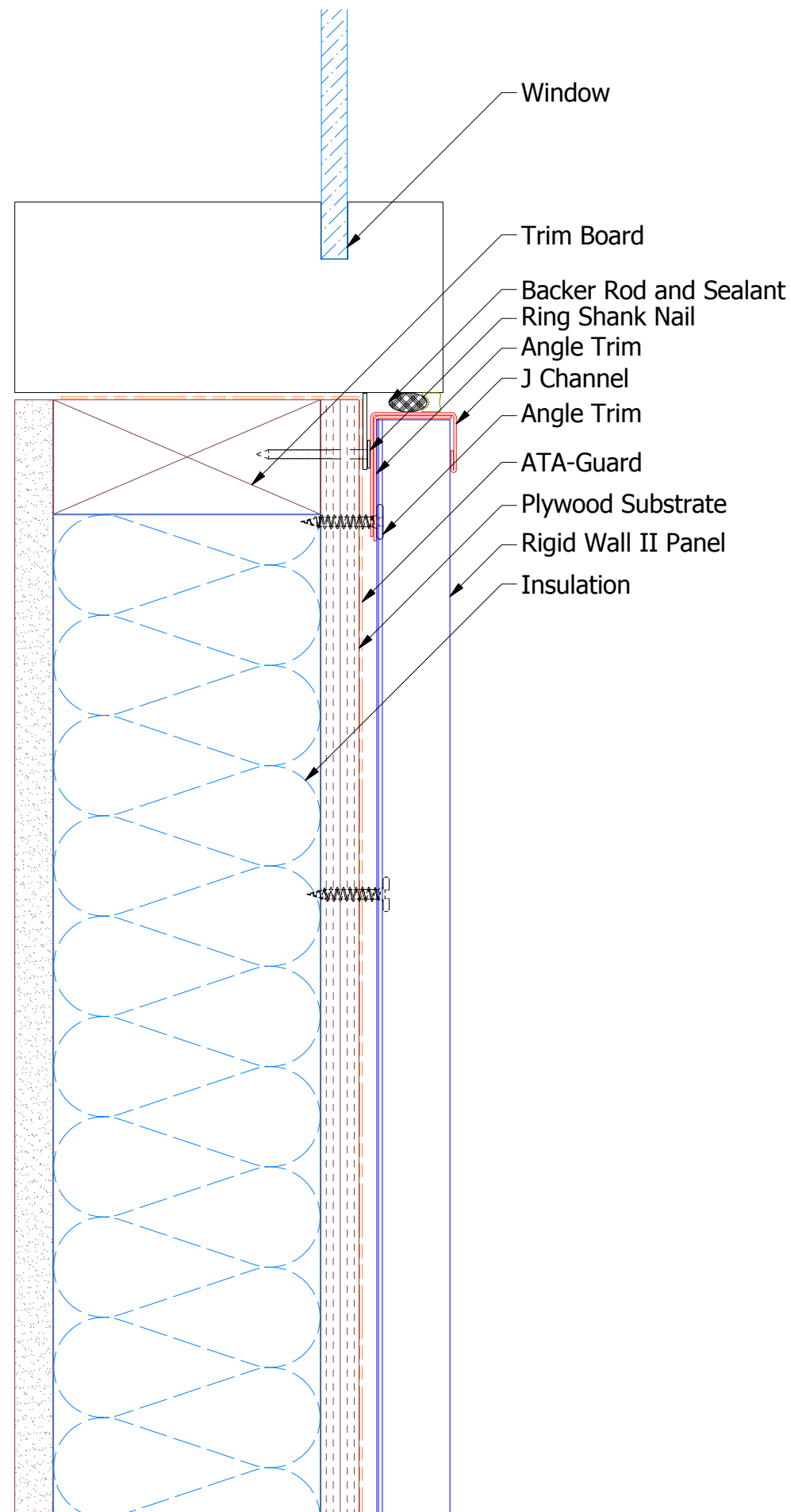
MCA118 - J Channel



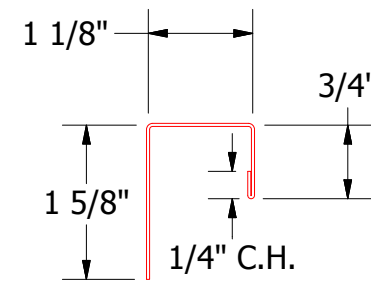
ATAS INTERNATIONAL, INC  
 Allentown PA  
 610-395-8445  
 Mesa AZ  
 480-558-7210

TITLE  
**Rigid Wall II Jamb Window Flange Detail**

REV. NO.	DATE	DESCRIPTION OF REVISION	BY	APP	DWG. NO.	DR	JAC	DATE	8/2/2018
						APP		DATE	
					MATERIAL	SH. SIZE	B	SCALE	X:X



MCA680 - Angle Trim



MCA118 - J Channel



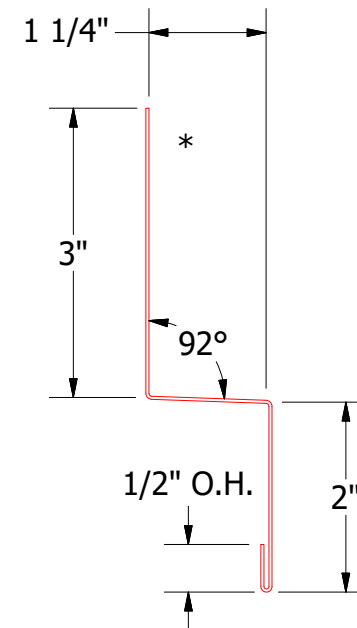
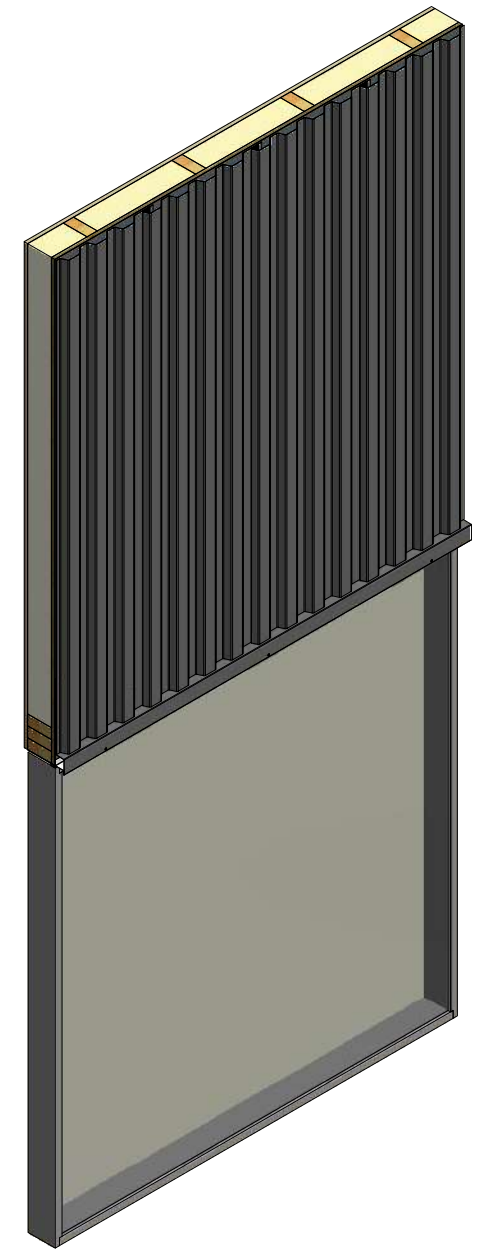
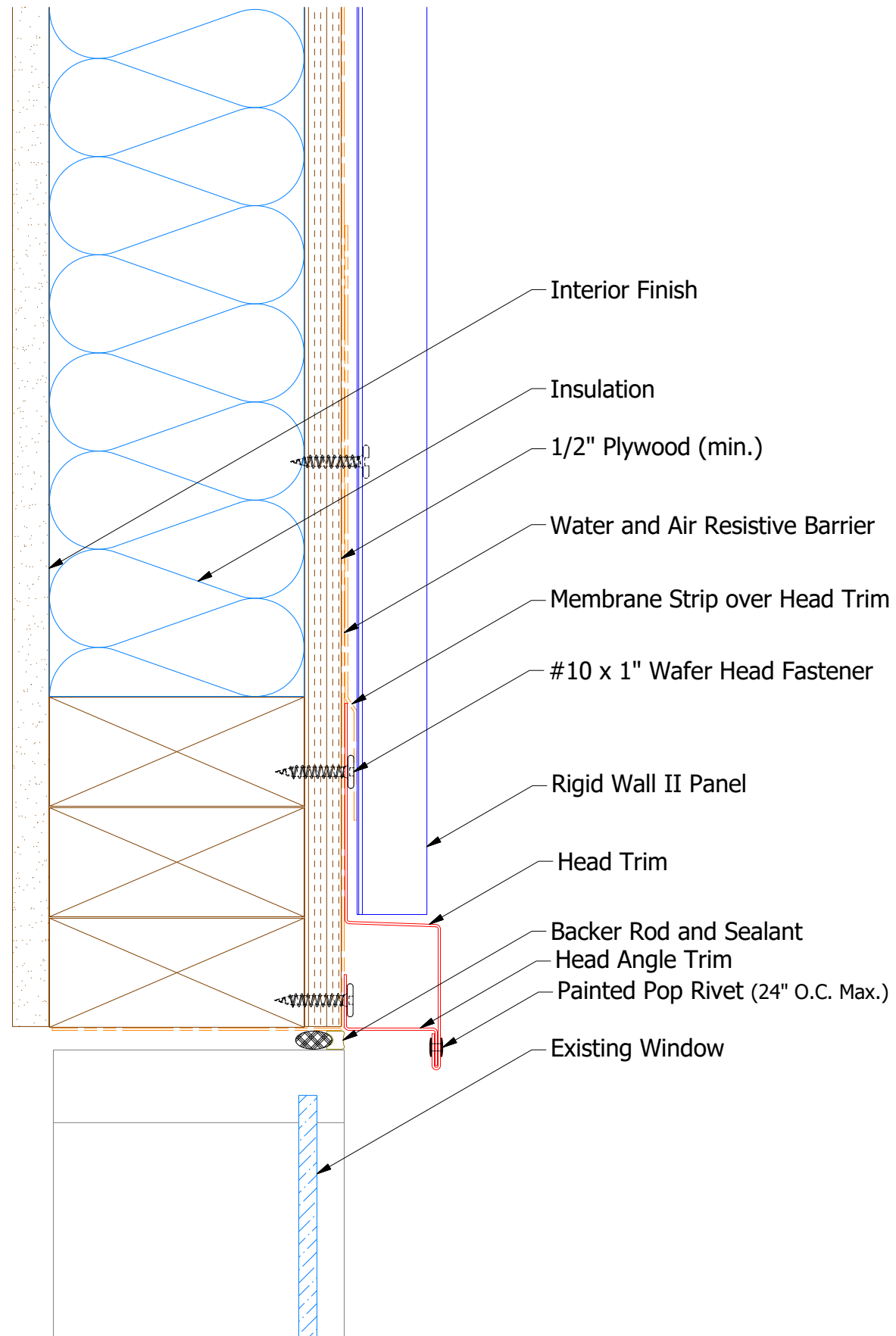
ATAS INTERNATIONAL, INC  
 Allentown PA  
 610-395-8445  
 Mesa AZ  
 480-558-7210

TITLE  
**Rigid Wall II Window Sill Flange Detail**

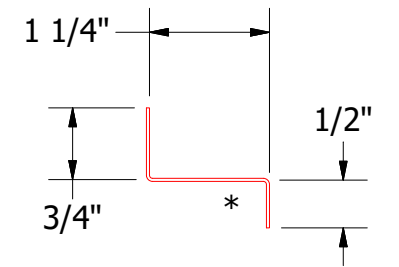
DR	JAC	DATE	8/3/2018
APP		DATE	
SH. SIZE	B	SCALE	X:X

REV. NO.	DATE	DESCRIPTION OF REVISION	BY	APP

# Vertical Panel



MCA550 - Head Trim



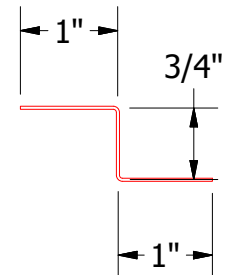
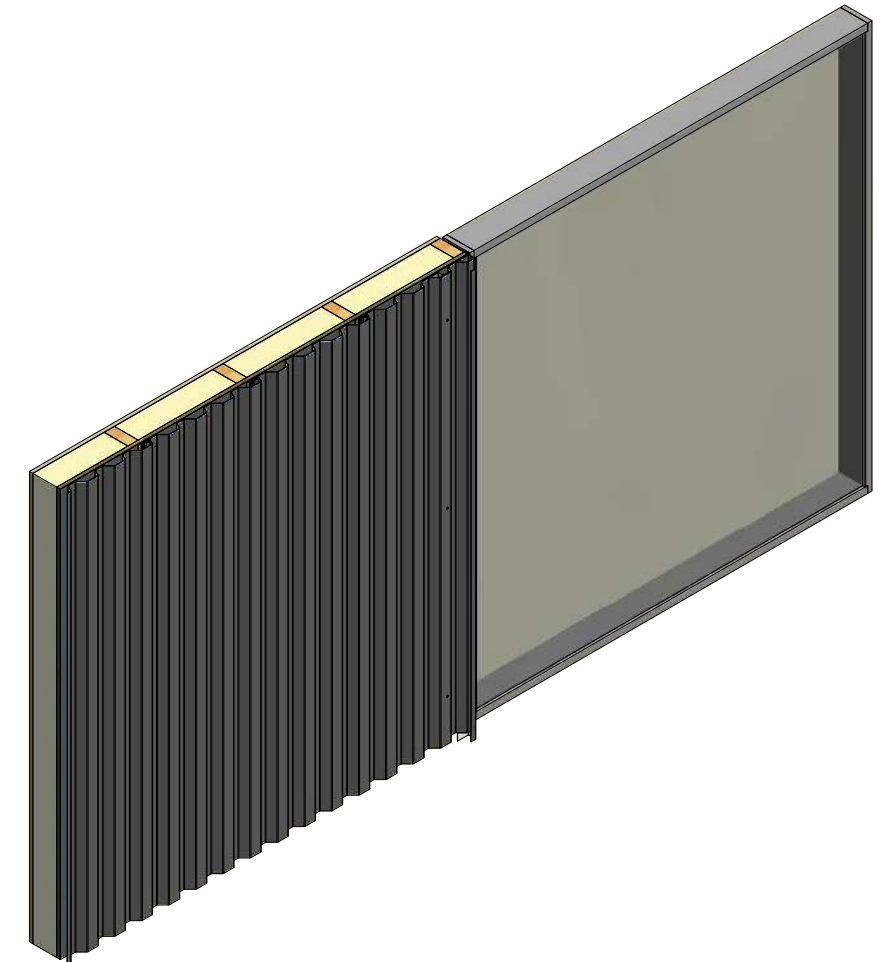
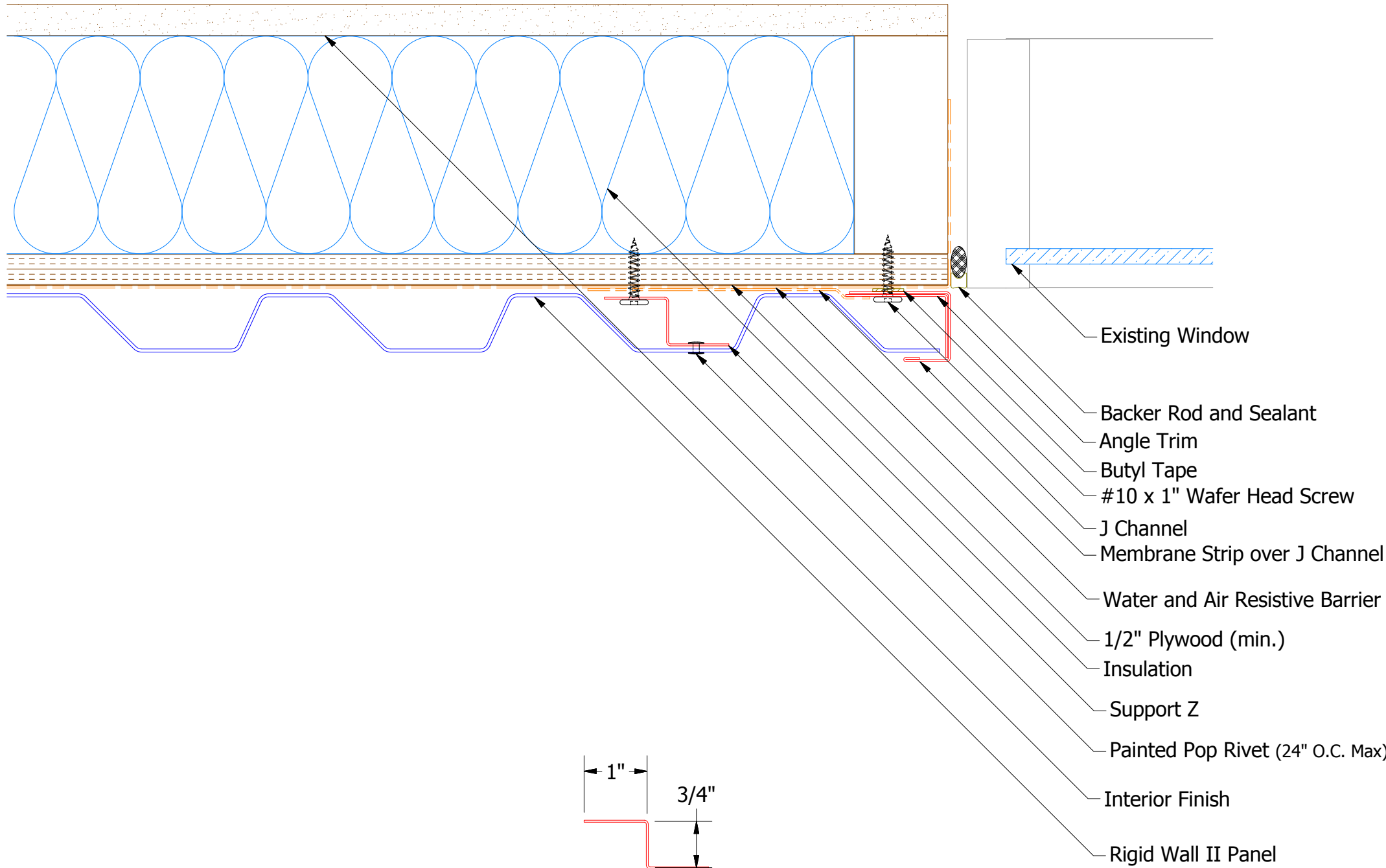
Head Support Z


**ATAS INTERNATIONAL, INC**  
 Allentown PA  
 610-395-8445  
 Mesa AZ  
 480-558-7210

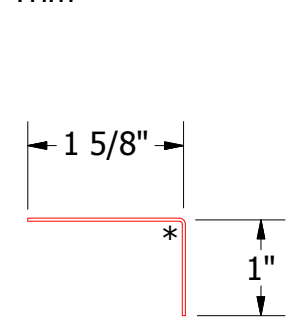
TITLE Rigid Wall II Head (Existing Window) Detail			
DWG. NO.	DR	DATE	7/11/2016
APP	DMR	DATE	7/25/16
MATERIAL	DAS	SCALE	X:X
SH. SIZE	B		

REV. NO.	DATE	DESCRIPTION OF REVISION	BY	APP

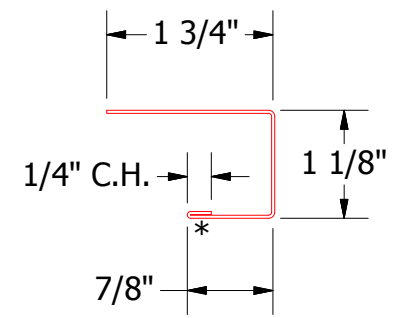
# Vertical Panel



MCA681 - Support Z



MCA680 - Angle Trim

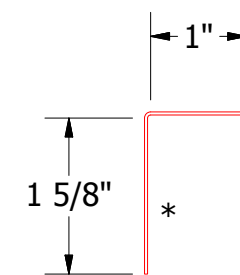
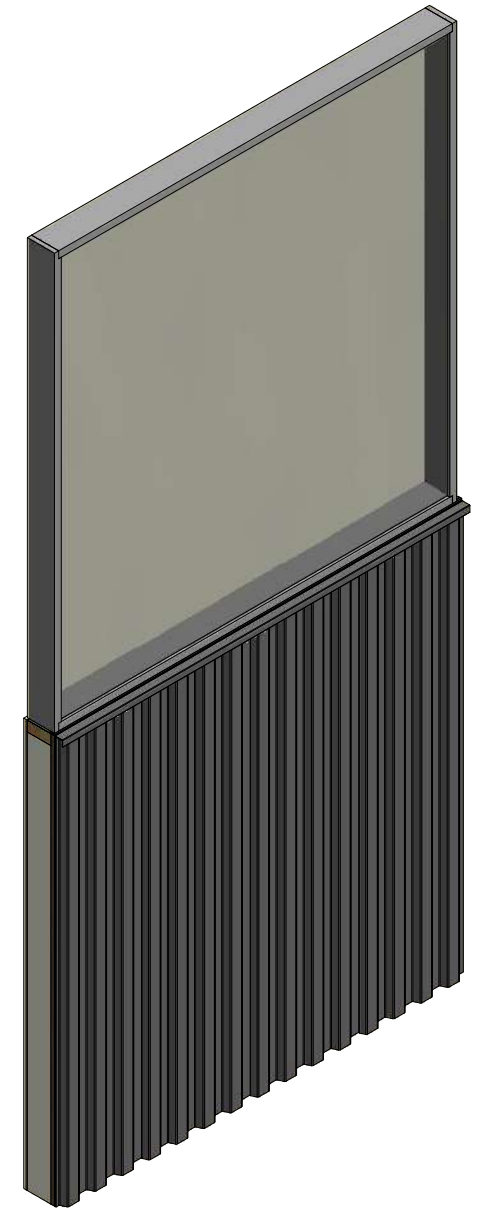
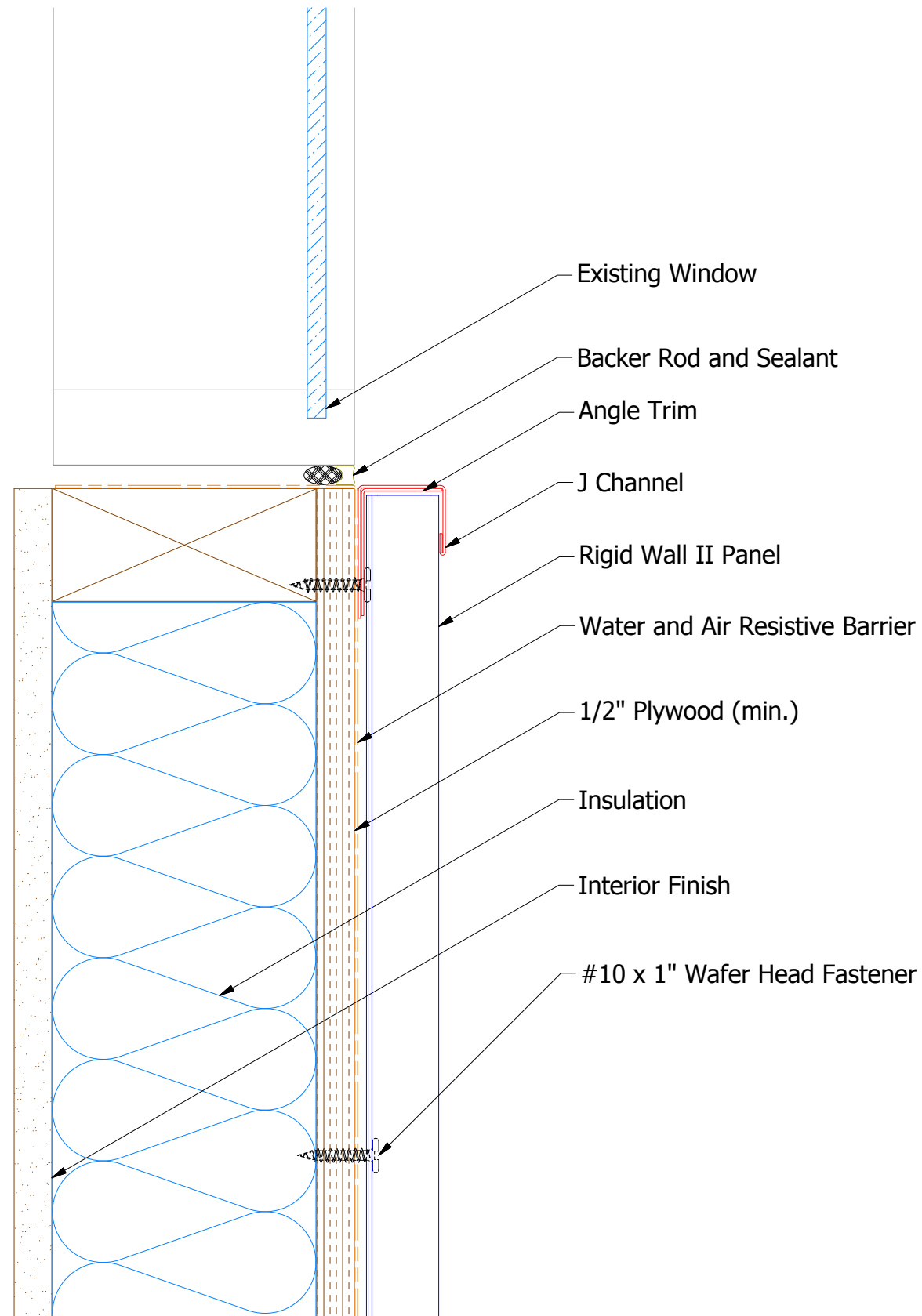


MCA118 - J Channel

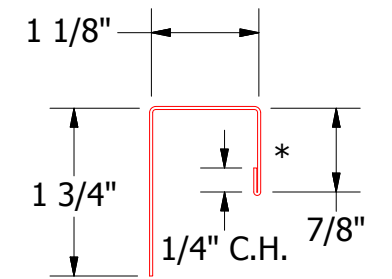
**ATAS** ATAS INTERNATIONAL, INC  
 Allentown PA  
 610-395-8445  
 Mesa AZ  
 480-558-7210

TITLE				Rigid Wall II (Existing Window) Jamb Detail			
DWG. NO.		DR		DATE		7/11/2016	
		DMR		DATE		7/25/16	
MATERIAL				SH. SIZE		SCALE	
				B		X:X	
REV. NO.	DATE	DESCRIPTION OF REVISION	BY	APP			

# Vertical Panel



MCA680 - Angle Trim

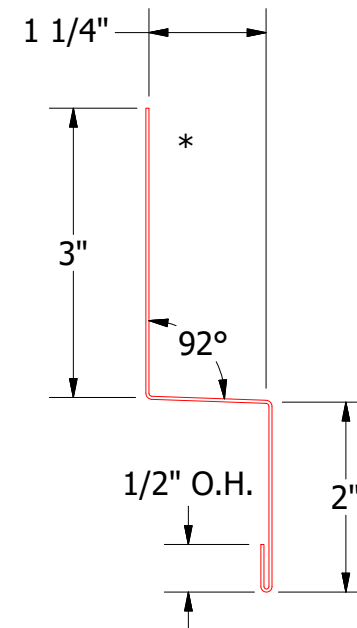
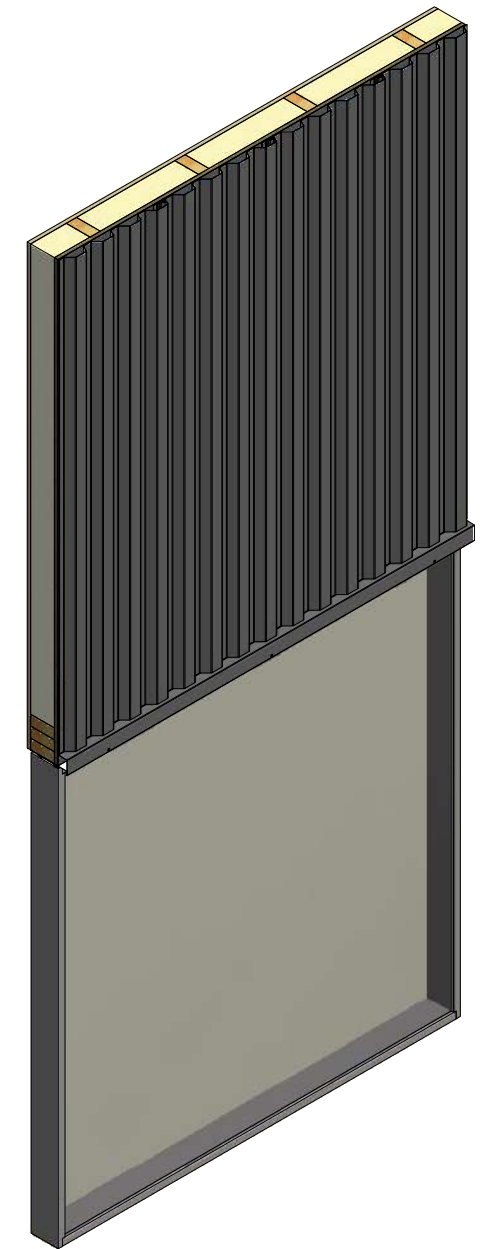
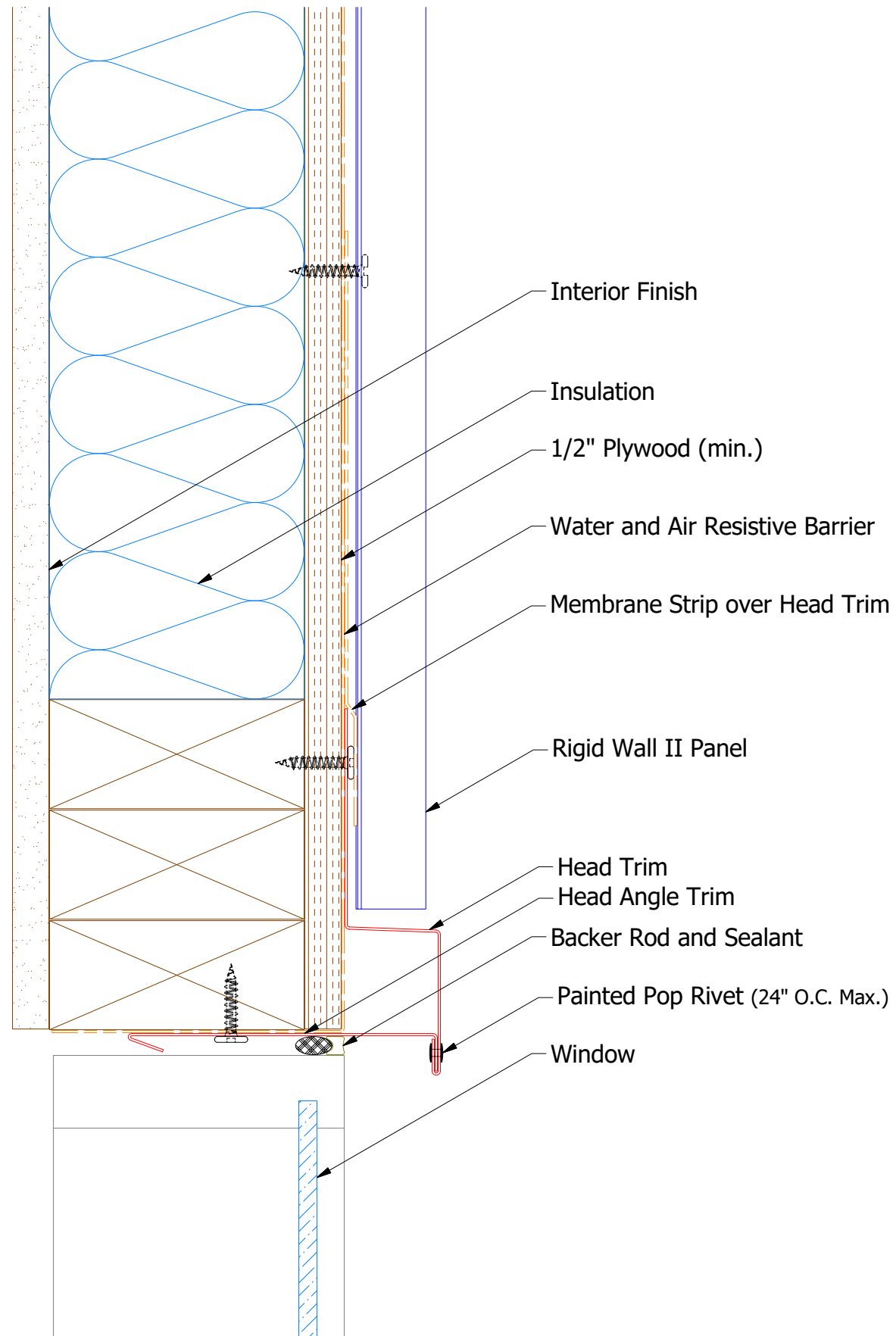


MCA118 - J Closure

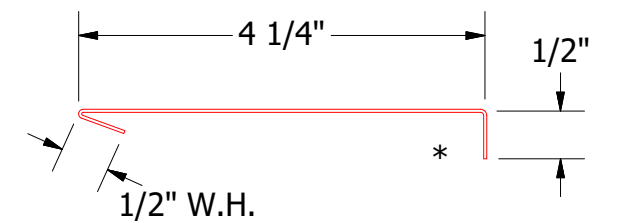
**ATAS** ATAS INTERNATIONAL, INC  
 Allentown PA  
 610-395-8445  
 Mesa AZ  
 480-558-7210

TITLE				Rigid Wall II Existing Window Sill Detail			
REV. NO.		DATE		DESCRIPTION OF REVISION		BY APP	
DWG. NO.		DR MBP		DATE 7/11/2016		APP DAS	
MATERIAL		SH. SIZE B		SCALE X:X		DATE 7/25/16	

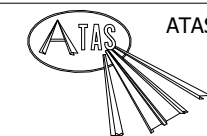
# Vertical Panel



MCA550 - Head Trim



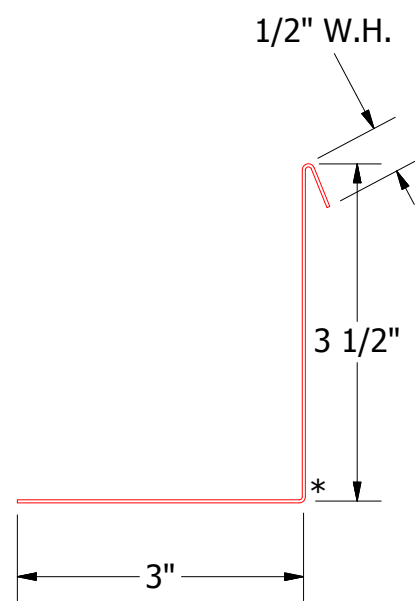
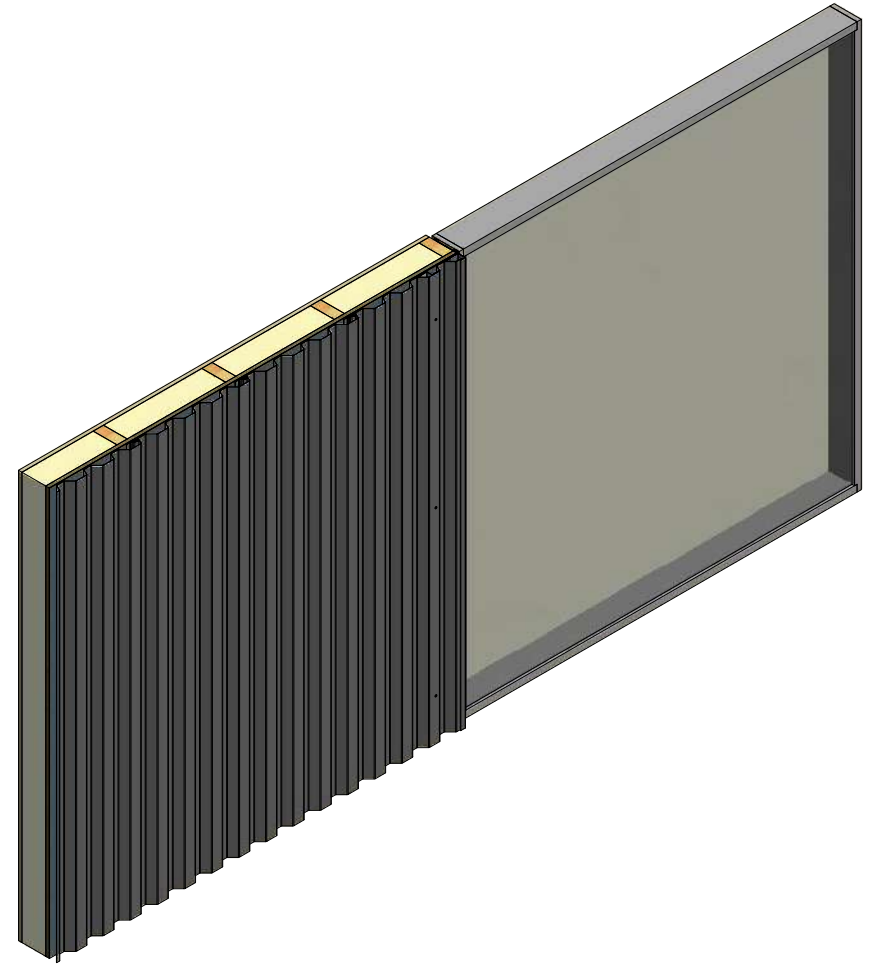
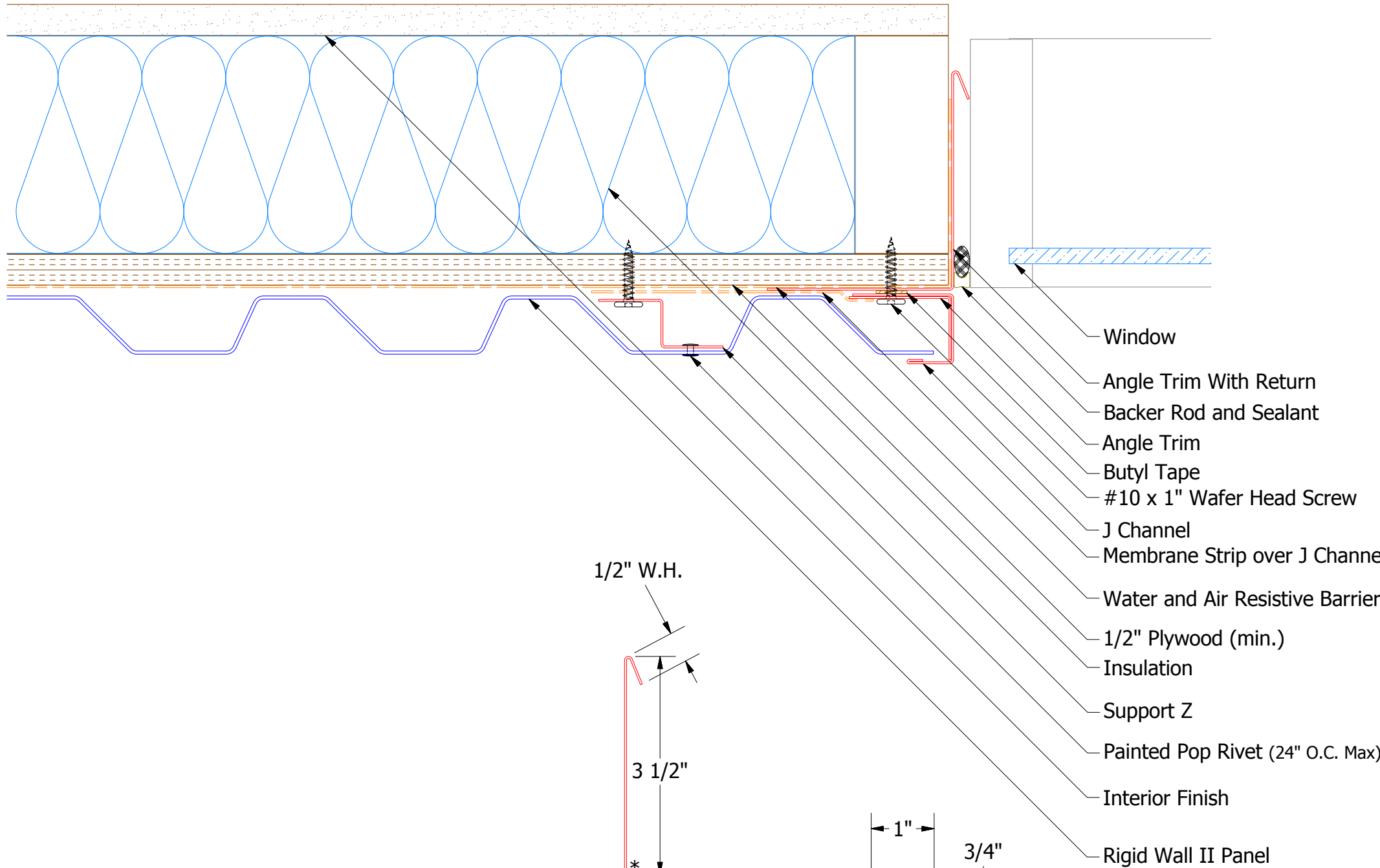
MCA690 - Head Angle Trim



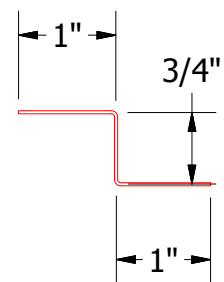
ATAS INTERNATIONAL, INC  
 Allentown PA  
 610-395-8445  
 Mesa AZ  
 480-558-7210

TITLE				Rigid Wall II Head Detail			
DWG. NO.		DR		DATE		7/11/2016	
APP		DMR		DATE		7/25/16	
MATERIAL				SH. SIZE		SCALE	
BY		APP		B		X:X	
REV. NO.	DATE	DESCRIPTION OF REVISION	BY	APP			

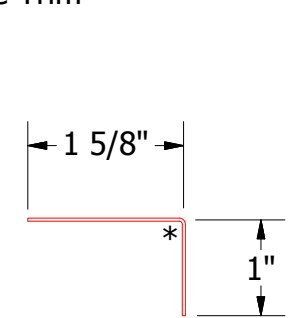
# Vertical Panel



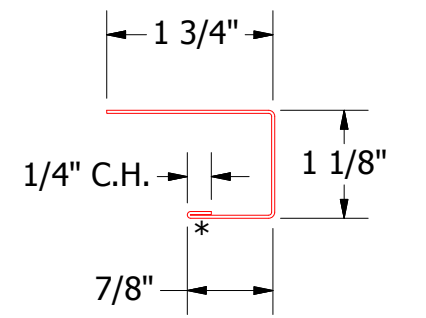
MCA683 - Angle Trim Without Return



MCA681 - Support Z



MCA680 - Angle Trim



MCA118 - J Channel

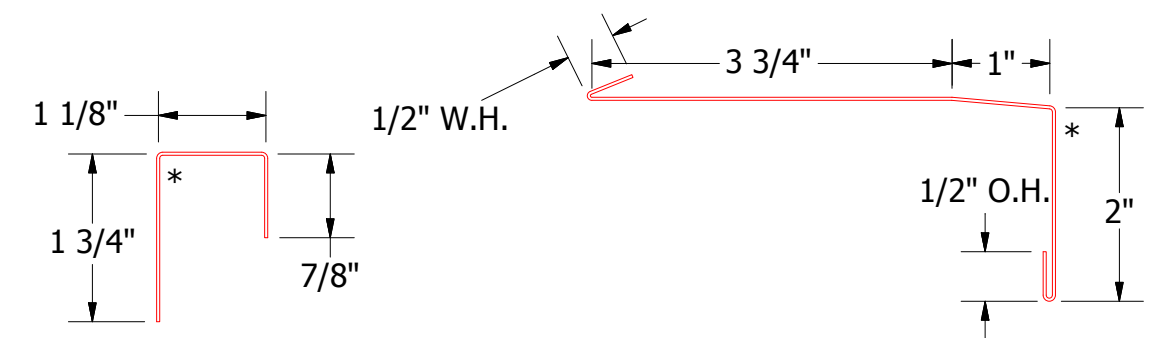
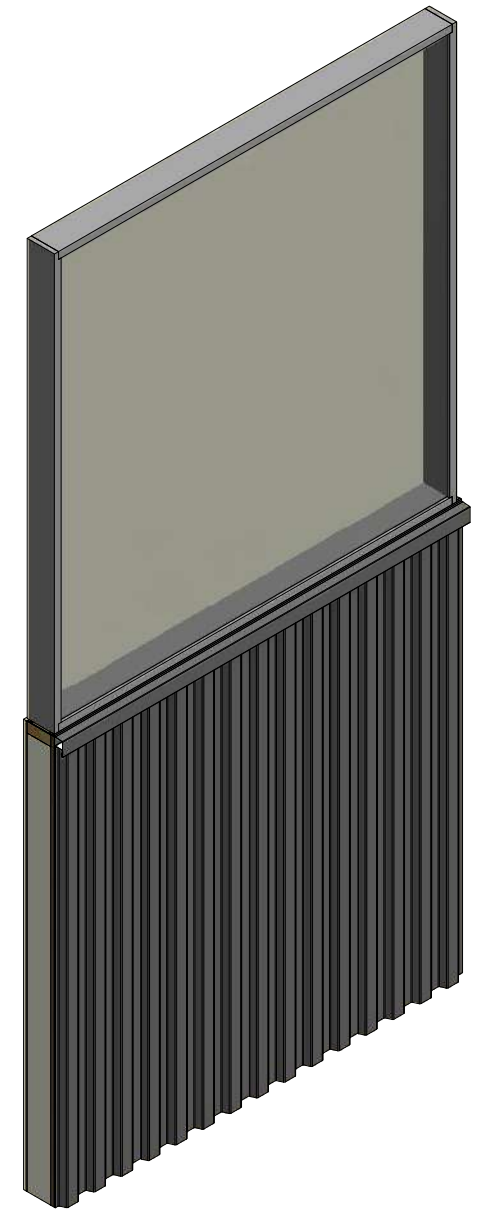
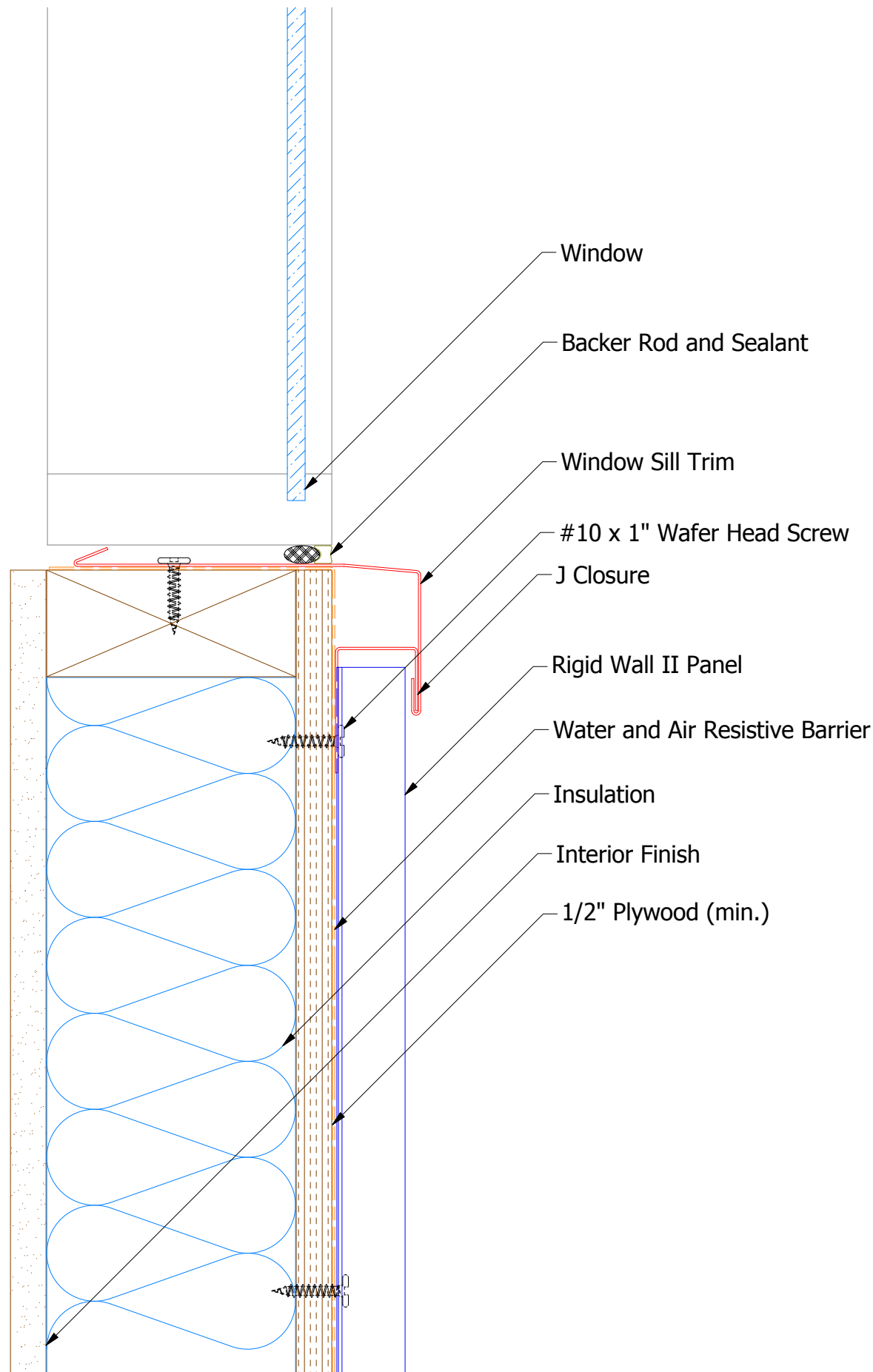
REV. NO.	DATE	DESCRIPTION OF REVISION	BY	APP

TITLE		Rigid Wall II Jamb Detail		
DWG. NO.	DR	DMR	DATE	7/11/2016
MATERIAL	APP	DAS	DATE	7/25/16
SH. SIZE	B	SCALE	X:X	

**ATAS** ATAS INTERNATIONAL, INC  
 Allentown PA  
 610-395-8445  
 Mesa AZ  
 480-558-7210

# Vertical Panel



MCA270 - J Closure

MCA670 - Window Sill Trim


**ATAS INTERNATIONAL, INC**  
 Allentown PA  
 610-395-8445  
 Mesa AZ  
 480-558-7210

TITLE **Rigid Wall II Window Sill Detail**

REV. NO.	DATE	DESCRIPTION OF REVISION	BY	APP	DWG. NO.	DR	DATE
						MBP	7/11/2016
						DAS	7/25/16
					MATERIAL	SH. SIZE	SCALE
						B	X:X