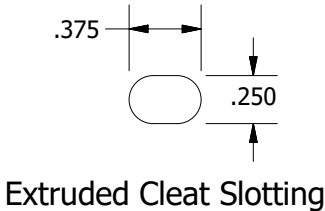
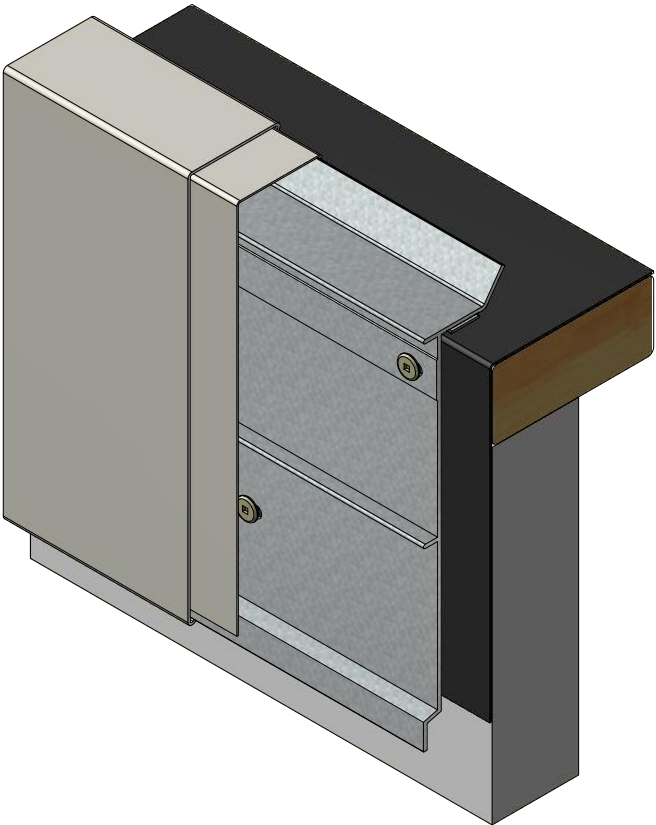
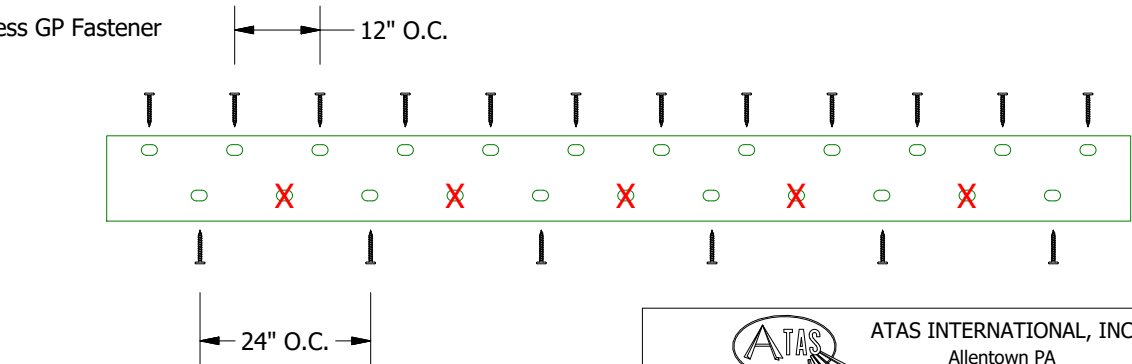



BOM per 12'		Standard Materials		Dimensions	
Component	Quantity	Material	Available Gauges	Coverage (C)	Height (H)
Fascia Cover	1	Pre-Finished Steel	24 GA, 22 GA	4"	5-1/2"
6" Splice	1	Stainless Steel	24 GA, 22 GA	5-1/2"	7"
Extruded Continuous Cleat	1	Pre-Finished Alum.	.040, .050, .063	7"	8-1/2"
6" .032 Aluminum Cleat Splice	1	Mill Alum.	.040, .050, .063	8-1/2"	10"
10-13 x 1 1/2" Stainless GP Fastener	18			10"	11-1/2"



Extruded Cleat Slotting



Cleat Fastener Location per ES-1 Testing



ATAS INTERNATIONAL, INC

Allentown PA
610-395-8445
Mesa AZ
480-558-7210

TITLE			
Rapid Lok Extruded Fascia Product Detail			
DWG. NO.	DR	PJR	DATE 12-07-15
MATERIAL	APP		DATE
SH. SIZE A	SCALE	X:X	

REV. NO.	DATE	DESCRIPTION OF REVISION	BY	APP
02	2/22/2024	Added Sealant by others	KRK	
01	11/30/2018	Added Detail for Fastner Placement on Extrusion	KRK	