

ATAS International, Inc.

Sustainable Solutions For A Better Future

COLOR SELECTION

OVERVIEW

A leading manufacturer of sustainable building envelope technology, ATAS utilizes cool pigment paint on many color offerings. Our products reflect infrared radiation, which results in cooler surface temperatures, and maximum fade resistance.

Many of the ATAS products meet the qualifications for potential green building certification credits and industry ratings. See page four, Color vs. Materials Reference Guide, for SRI values. Information on ATAS' sustainable products can be found at www.atas.com/sustainability.

70% PVDF finish carries a limited warranty against fading and chalking. ATAS coated materials are non-staining and virtually maintenance free. Any surface residue is easily removed with conventional cleaning solutions or detergents.

AVAILABILITY

- All stock colors available in 24 ga, 0.032, 0.040, and 0.050 with limited availability in 22 ga, 0.063 and 0.080.
- All matte and premium colors available in 24 ga, 0.032, and 0.040 with limited availability in 0.050, and 0.063.

Please inquire for additional materials and custom colors. For additional color offerings, visit www.atas.com/colors.

STOCK COLORS



Black (02)



Classic Bronze (01)



Medium Bronze (03)



Hartford Green (27)



Forest Green (11)



Teal (19)



Hemlock Green (30)



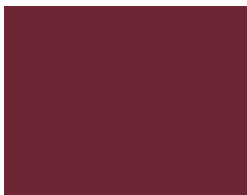
Patina Green (12)



Chocolate Brown (04)



Boysenberry (25)



Redwood (07)



Mission Red (08)



Sierra Tan (09)



Rawhide (15)



Concord Cream (05)



Sandstone (06)



Regal Blue (18)



Slate Blue (21)



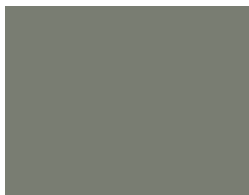
Siam Blue (14)



Rocky Grey (16)



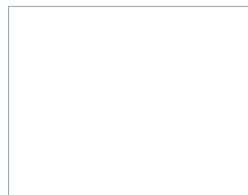
Charcoal Grey (62)



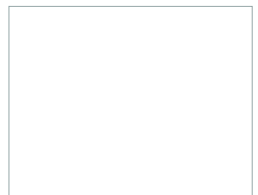
Slate Grey (20)



Dove Grey (13)

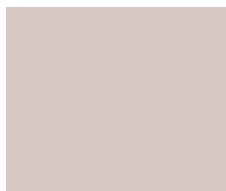


Ascot White (10)



Bone White (26)

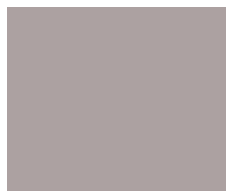
MATTE FINISH



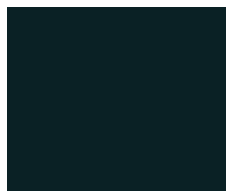
Almond (36)



Anchor Grey (37)



Ash Grey (33)



Char Brown (29)

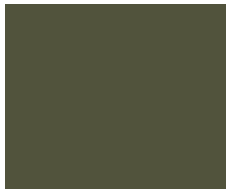


Thunder Grey (34)



Matte Black (32)

PREMIUM FINISH



Antique Patina (24)



Brite Red (17)



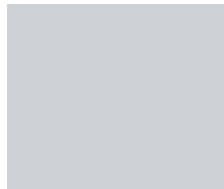
Champagne (31)



Coppertone (23)

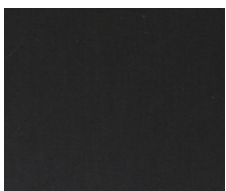


Silversmith (28)

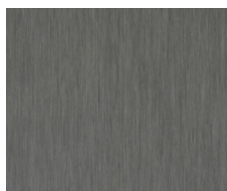


Titanium (35)

NATURAL METALS



Dark Zinc (51)*



Grey Zinc (50)*



BlackMatt Anodized (67)*



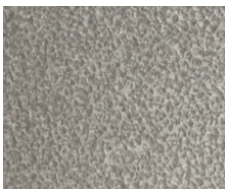
Clear Satin Anodized (70)



Dark Bronze Anodized (71)



LA Extra Dark Bronze Anodized (66)*



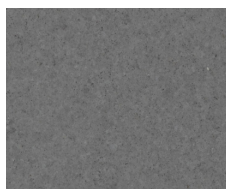
55% Al-Zn Alloy Coated Steel with Acrylic Coating (97)



Copper (49)*



Classic Stainless Steel (40)*

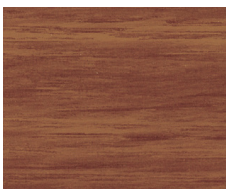


Tin Matte Stainless Steel (41)*

WOODLAND SERIES*



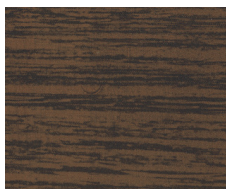
Birch (57)



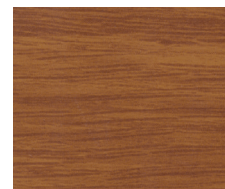
Cedar (54)



Driftwood (53)

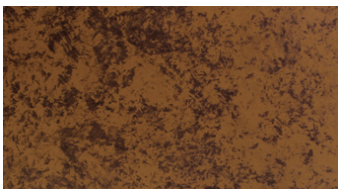


Walnut (55)

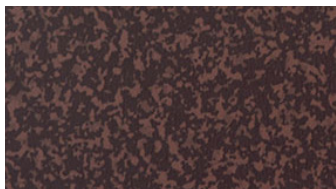


Bamboo (81)

OXIDE SERIES*



Copper Brown (42)





Tarnished Red (47)

Subject to minimum quantities and extended lead time. Inquire for material and panel width availability. Advanta Shingle®, CastleTop®, Colonial Seam®, Dutch Seam®, InSpire®, Isoleren®, Techo Tile® and Wind-Lok® are registered trademarks of ATAS International, Inc. Colors are as close to the actual colors as modern printing allows. Exact color chips on request; this is a requirement for all premium colors. If you have requirements or preference for colors or finishes other than shown, contact ATAS. Color availability varies by material, gauge and profile. ATAS is not responsible for colors selected from color chart. ATAS reserves the right to modify, eliminate and/or change its products without prior notification. Contact ATAS for more information. Every project is different. To the full extent permissible by law, ATAS disclaims all warranties, express or implied, including, but not limited to, implied warranties of merchantability and fitness for a particular purpose. A qualified engineer, architect or contractor should review suitability of use. Please visit www.atas.com for the most up-to-date information.

*Special material. Pricing and availability dependent upon project specifics. Color chips available upon request.

ISOLEREN INSULATED METAL PANELS **FOAM CORE | COLOR CHART**

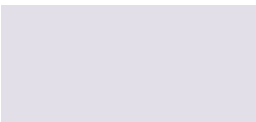




STANDARD SILICONIZED POLYESTER | ROOF & WALL COLORS IN STOCK, STANDARD GLOSS

		
REGAL WHITE II SR: 0.61 E: 0.88 SRI: 73	LIGHT STONE SR: 0.50 E: 0.86 SRI: 57	GRAY STONE SR: 0.41 E: 0.86 SRI: 45



STANDARD POLYESTER INTERIOR ONLY


REGAL WHITE I

STANDARD 70% PVDF | ROOF & WALL COLORS IN STOCK, STANDARD GLOSS FOR ROOF APPLICATIONS, LOW GLOSS FOR WALL APPLICATIONS)

		
REGAL WHITE III LOW GLOSS: SR: 0.66 E: 0.87 SRI: 80 STD. GLOSS: SR: 0.68 E: 0.86 SRI: 82	ALMOND LOW GLOSS: SR: 0.62 E: 0.87 SRI: 74 STD. GLOSS: SR: 0.60 E: 0.84 SRI: 70	SANDSTONE LOW GLOSS: SR: 0.59 E: 0.87 SRI: 70 STD. GLOSS: SR: 0.54 E: 0.86 SRI: 63
		
ASH GRAY LOW GLOSS: SR: 0.48 E: 0.87 SRI: 55 STD. GLOSS: SR: 0.39 E: 0.84 SRI: 41	PATINA GREEN LOW GLOSS: SR: 0.38 E: 0.87 SRI: 41 STD. GLOSS: SR: 0.46 E: 0.85 SRI: 51	

STANDARD 70% PVDF | WALL COLORS IN STOCK, LOW GLOSS

	
SURREY BEIGE SR: 0.48 E: 0.87 SRI: 55	ROMAN BLUE SR: 0.26 E: 0.87 SRI: 25

Colors are as close to the actual colors as modern printing allows. Exact metal color chips available upon request (this is a requirement for all premium colors), and should be used for final color selection.

PREMIUM METALLICS SPECIAL COLORS, NOT IN STOCK, ADDITIONAL COSTS WILL APPLY

				
TEXAS SILVER SR: 0.58 E: 0.78 SRI: 66	LEADCOAT SR: 0.37 E: 0.82 SRI: 38	WEATHERED GALVALUME® SR: 0.30 E: 0.79 SRI: 27	CHAMPAGNE SR: 0.38 E: 0.80 SRI: 38	COPPER PENNY SR: 0.49 E: 0.85 SRI: 55

ISOLEREN INSULATED METAL PANELS **FIRE RATED CORE | COLOR CHART**

		
WHITE	LIGHT GREY	BEIGE

	
SURREY BEIGE	SANDSTONE

FIRE RATED COLORS
* Standard 70% PVDF Wall Colors Only
* In stock
* Standard Gloss

Colors are as close to the actual colors as modern printing allows. Exact metal color chips available upon request (this is a requirement for all premium colors), and should be used for final color selection. If you have requirements or preference for colors or finishes other than shown, contact ATAS. Color availability varies by material, gauge and profile. ATAS is not responsible for colors selected from color chart. ATAS reserves the right to modify, eliminate and/or change its products without prior notification. All colors are produced under stringent guidelines and tolerances that are identified within the coated metal industry. Batch to batch variations may occur within these established industry tolerances. Care should be exercised by customer when mixing lots. Contact ATAS for more information. Please visit www.atas.com for the most up-to-date information.

Color vs. Material Reference Guide

Color Description, Name	Ref. #	Steel Gauge			Aluminum Thickness					Initial Solar Reflectance	Thermal Emittance	Solar Reflectance Index (SRI)	Light Reflectance Value
Standard Colors		29	24	22	.032	.040	.050	.063	*.080				
Classic Bronze	1	*	*	*	*	*	*	*	*	0.12	0.82	4	4.09
Black	2	*	*	*	*	*	*	*	*	0.05	0.86	-2	5
Medium Bronze	3	*	*	*	*	*	*	*	*	0.33	0.86	34	11
Chocolate Brown	4	*	*	*	*	*	*	*	*	0.26	0.86	24	7
Concord Cream	5	*	*	*	*	*	*	*	*	0.65	0.85	78	62.13
Sandstone	6	*	*	*	*	*	*	*	*	0.57	0.85	66	49.76
Redwood	7	*	*	*	*	*	*	*	*	0.24	0.84	22	5.54
Mission Red	8	*	*	*	*	*	*	*	*	0.41	0.86	45	15
Sierra Tan	9	*	*	*	*	*	*	*	*	0.48	0.86	54	32
Ascot White	10	*	*	*	*	*	*	*	*	0.64	0.86	83	68
Forest Green	11	*	*	*	*	*	*	*	*	0.28	0.85	27	10
Patina Green	12	*	*	*	*	*	*	*	*	0.46	0.86	51	24
Dove Grey	13	*	*	*	*	*	*	*	*	0.5	0.83	55	35.18
Siam Blue	14	*	*	*	*	*	*	*	*	0.34	0.85	35	18.94
Rawhide	15	*	*	*	*	*	*	*	*	0.55	0.85	64	40.02
Rocky Grey	16	*	*	*	*	*	*	*	*	0.29	0.86	28	14
Regal Blue	18	*	*	*	*	*	*	*	*	0.27	0.86	26	10
Teal	19	*	*	*	*	*	*	*	*	0.3	0.85	30	10.56
Slate Grey	20	*	*	*	*	*	*	*	*	0.4	0.83	42	17.13
Slate Blue	21	*	*	*	*	*	*	*	*	0.31	0.86	31	18.32
Boysenberry	25	*	*	*	*	*	*	*	*	0.28	0.86	28	8
Bone White	26	*	*	*	*	*	*	*	*	0.74	0.86	90	76
Hartford Green	27	*	*	*	*	*	*	*	*	0.25	0.85	23	5.03
Hemlock Green	30	*	*	*	*	*	*	*	*	0.3	0.86	30	17.18
Charcoal Grey	62	*	*	*	*	*	*	*	*	0.29	0.82	27	10.01
55% Al-Zn Alloy Coated Steel with Acrylic Coating	97	*	*	*	*	*	*	*	*	0.68	0.14	58	
Mill Finish-Aluminum	99				*	*	*	*	*	—	—	—	—
Matte Finish		29	24	22	.032	.040	.050	.063	*.080				
Char Brown	29	*	*	*	*	*	*	*	*	0.24	0.84	20	4.34
Matte Black	32	*	*	*	*	*	*	*	*	0.09	0.84	2	3.7
Ash Grey	33	*	*	*	*	*	*	*	*	0.5	0.86	57	37
Thunder Grey	34	*	*	*	*	*	*	*	*	0.26	0.86	25	13
Almond	36	*	*	*	*	*	*	*	*	0.64	0.86	76	60
Anchor Grey	37	*	*	*	*	*	*	*	*	0.39	0.84	41	17.77
Premium Finish		29	24	22	.032	.040	.050	.063	*.080				
Brite Red	17	*	*	*	*	*	*	*	*	0.41	0.83	43	8.22
Coppertone	23	*	*	*	*	*	*	*	*	0.52	0.83	58	24.54
Antique Patina	24	*	*	*	*	*	*	*	*	0.26	0.85	24	14.33
Silversmith	28	*	*	*	*	*	*	*	*	0.54	0.82	60	31.03
Champagne	31	*	*	*	*	*	*	*	*	0.59	0.82	67	38.46
Titanium	35	*	*	*	*	*	*	*	*	0.59	0.84	68	38.63
Anodized		29	24	22	.032	.040	.050	.063	*.080				
LA Extra Dark Bronze Anodized	66	*	*	*	*	*	*	*	*	0.16	0.75	6	
BlackMatt Anodized	67	*	*	*	*	*	*	*	*				
Clear Satin Anodized	70	*	*	*	*	*	*	*	*	0.77	0.7	92	
Dark Bronze Anodized	71	*	*	*	*	*	*	*	*	0.15	0.77	6	
Woodland Series		29	24	22	.032	.040	.050	.063	*.080				
Driftwood	53	*	*	*	*	*	*	*	*				
Cedar	54	*	*	*	*	*	*	*	*				
Walnut	55	*	*	*	*	*	*	*	*				
Birch	57	*	*	*	*	*	*	*	*				
Bamboo	81	*	*	*	*	*	*	*	*				
Oxide Series		29	24	22	.032	.040	.050	.063	*.080				
Copper Brown	42	*	*	*	*	*	*	*	*				
Tarnished Red	47	*	*	*	*	*	*	*	*				
Advanta Variegated Colors (stamped shingles)		29	24	22	.032	.040	.050	.063	*.080				
Ashland Slate	AS	*	*	*	*	*	*	*	*	0.44	0.83	48	
Baja Slate	BS	*	*	*	*	*	*	*	*	0.27	0.83	25	
Beech Tree	BT	*	*	*	*	*	*	*	*	0.38	0.84	40	
Deep Granite	DG	*	*	*	*	*	*	*	*	0.25	0.83	22	
Quarry Slate	QS	*	*	*	*	*	*	*	*	0.31	0.84	31	
Rocky Cliff	RC	*	*	*	*	*	*	*	*	0.29	0.83	27	
Shaded Spruce	SS	*	*	*	*	*	*	*	*	0.25	0.83	22	
Weathered Stone	WN	*	*	*	*	*	*	*	*	0.27	0.83	25	
Willow Slate	WS	*	*	*	*	*	*	*	*	0.3	0.83	29	
InSpire HP		29	24	22	.028	.032	.040	.050					
Select Blue	969	*	*	*	*	*	*	*	*				

*.080 aluminum is available upon request, subject to possible extended lead times.

LRD0625

www.atas.com | **ATAS International, Inc.**
800.468.1441 | Allentown, PA | Mesa, AZ | University Park, IL | Elkton MD

Stainless steel products provided by ROOFINOX®. Colors are as close to the actual colors as modern printing allows. Exact metal color chips available upon request (this is a requirement for all premium colors), and should be used for final color selection. If you have requirements or preference for colors or finishes other than shown, contact ATAS. Color availability varies by material, gauge and profile. ATAS is not responsible for colors selected from color chart. ATAS reserves the right to modify, eliminate and/or change its products without prior notification. All colors are produced under stringent guidelines and tolerances that are identified within the coated metal industry. Batch to batch variations may occur within these established industry tolerances. Care should be exercised by customer when mixing lots. Contact ATAS for more information. Please visit www.atas.com for the most up-to-date information. © 2024 ATAS International, Inc. LRD0625 LAT401

