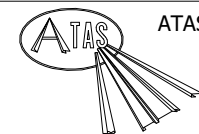
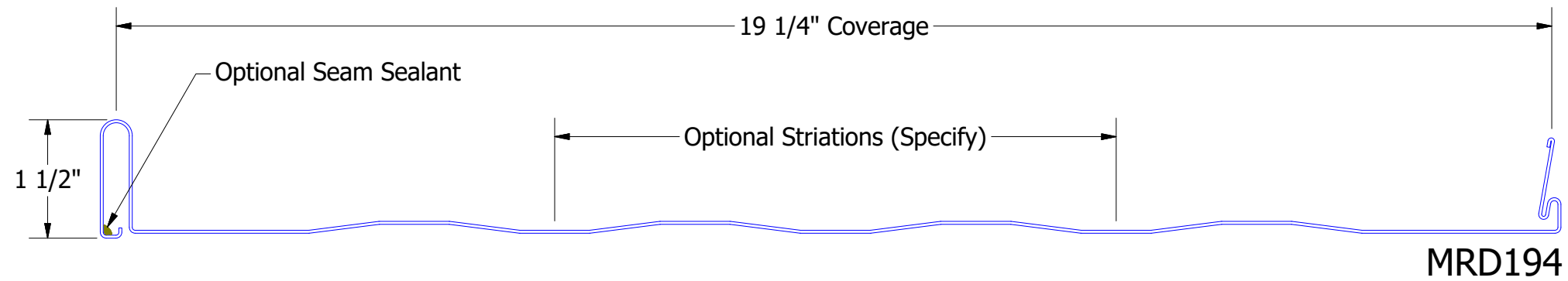
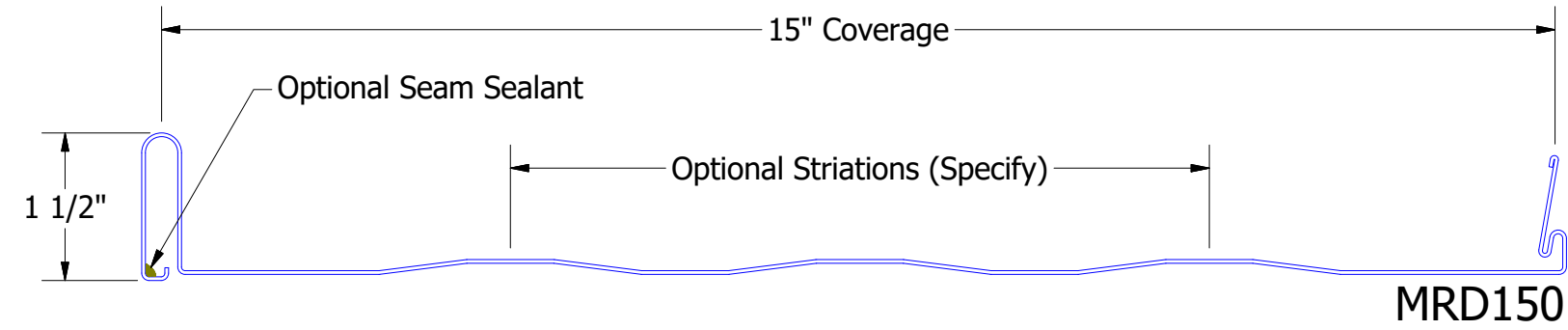
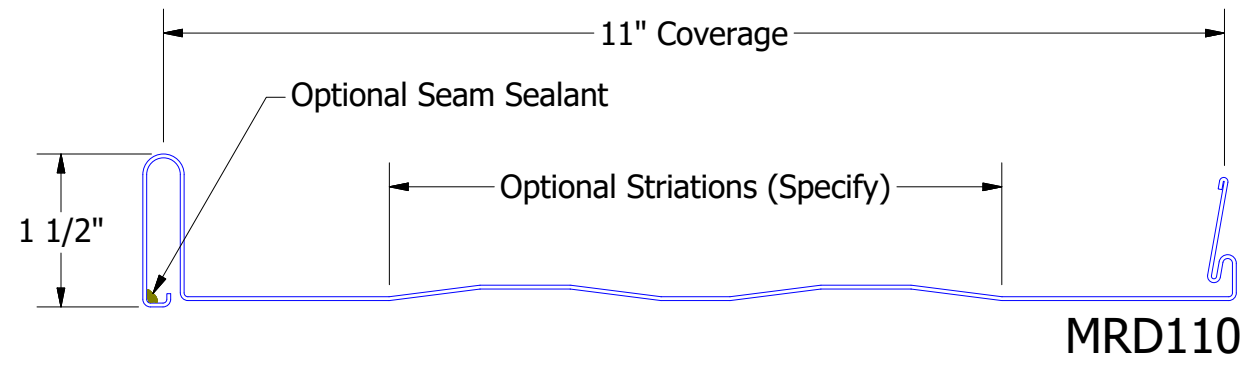


**ATAS INTERNATIONAL, INC**  
 Allentown PA  
 610-395-8445  
 Mesa AZ  
 480-558-7210

TITLE			Dutch Seam Panel Profile Detail		
DWG. NO.		DR		DATE	
		KRK		1/25/2023	
MATERIAL		APP		DATE	
		SH. SIZE		SCALE	
		B		X:X	

REV. NO.	DATE	DESCRIPTION OF REVISION	BY	APP



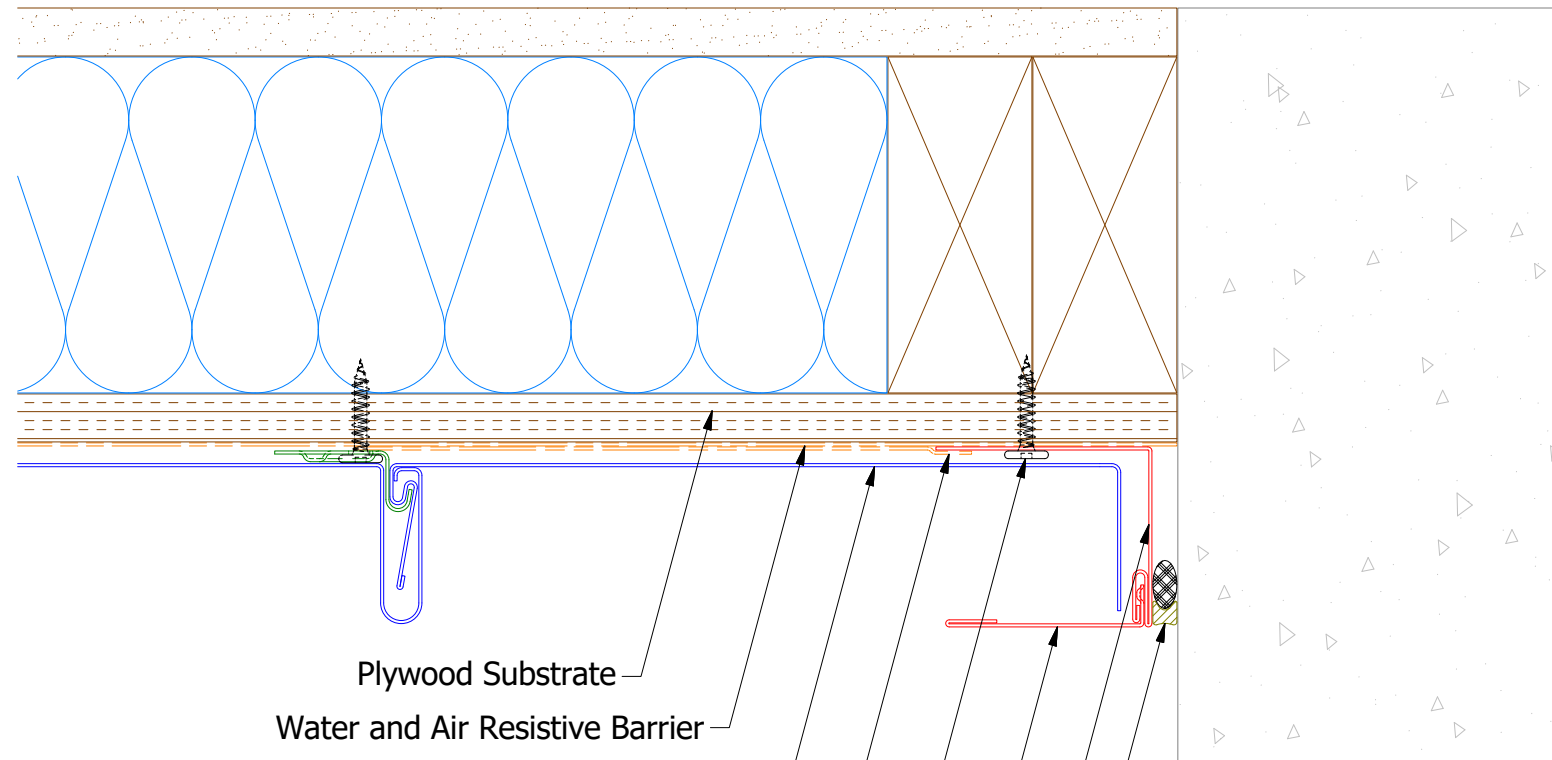
**ATAS INTERNATIONAL, INC**  
 Allentown PA  
 610-395-8445  
 Mesa AZ  
 480-558-7210

TITLE **Dutch Seam Panel Profile Detail**

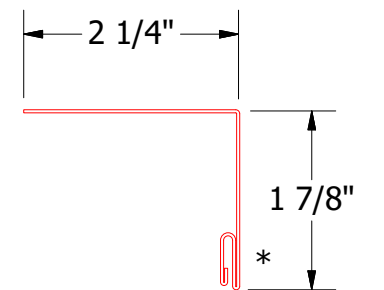
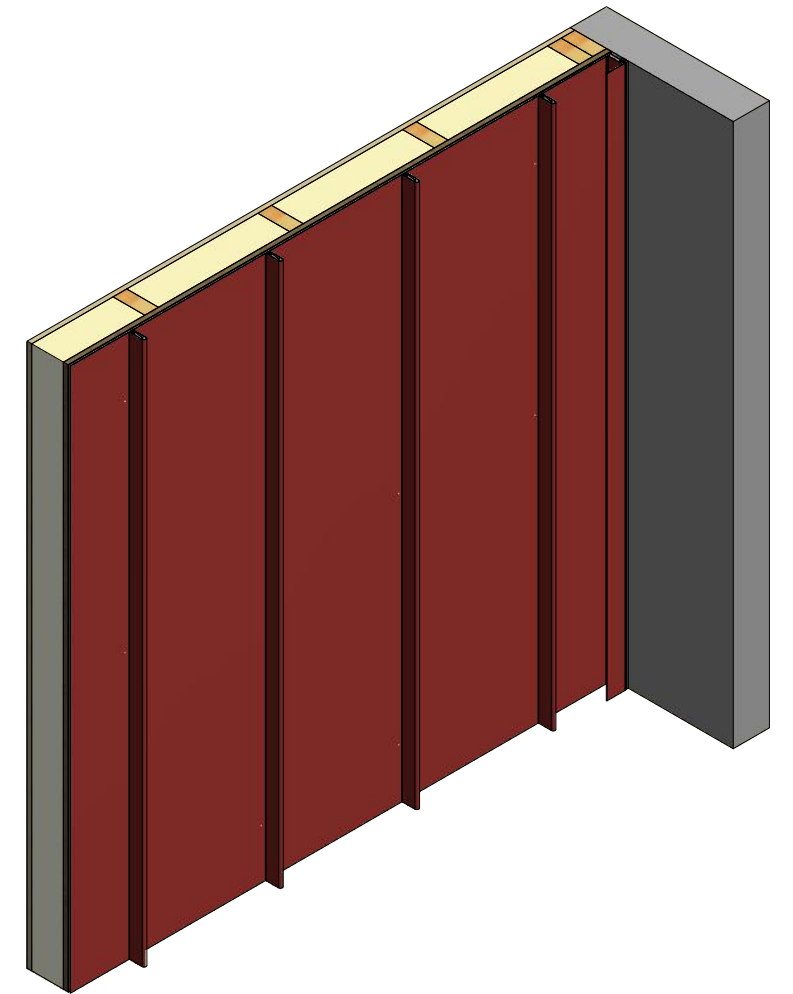
DR	KRK	DATE	1/25/2023
APP		DATE	
SH. SIZE	B	SCALE	X:X

REV. NO.	DATE	DESCRIPTION OF REVISION	BY	APP

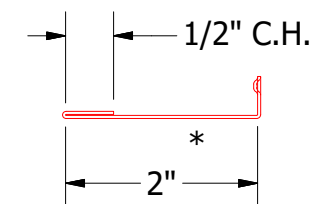




- Plywood Substrate
- Water and Air Resistive Barrier
- Dutch Seam Panel
- Membrane Strip
- #10 x 1" Wafer Head Screw
- Snap J Cover
- Snap Base
- Baker Rod and Sealant

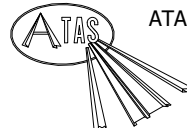


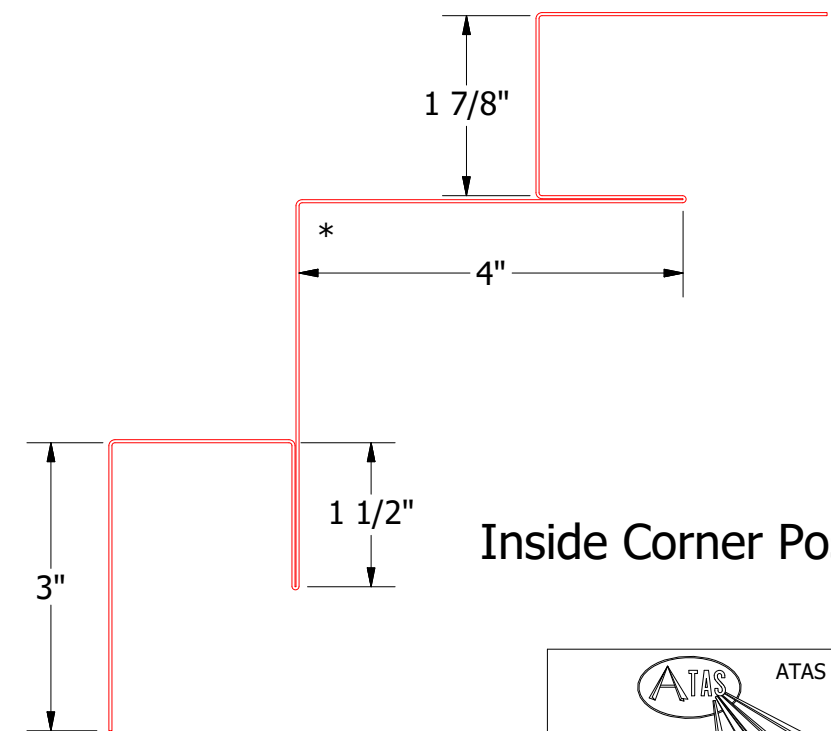
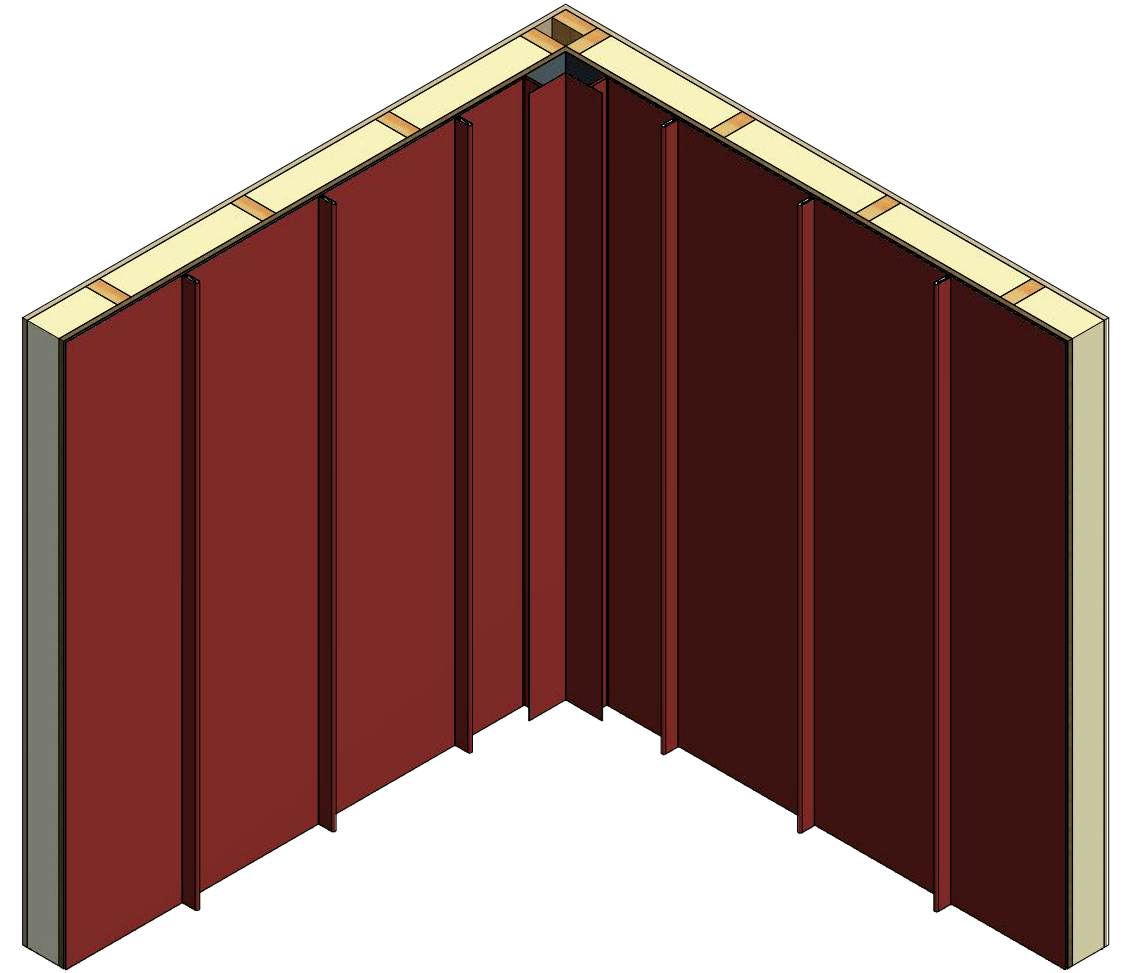
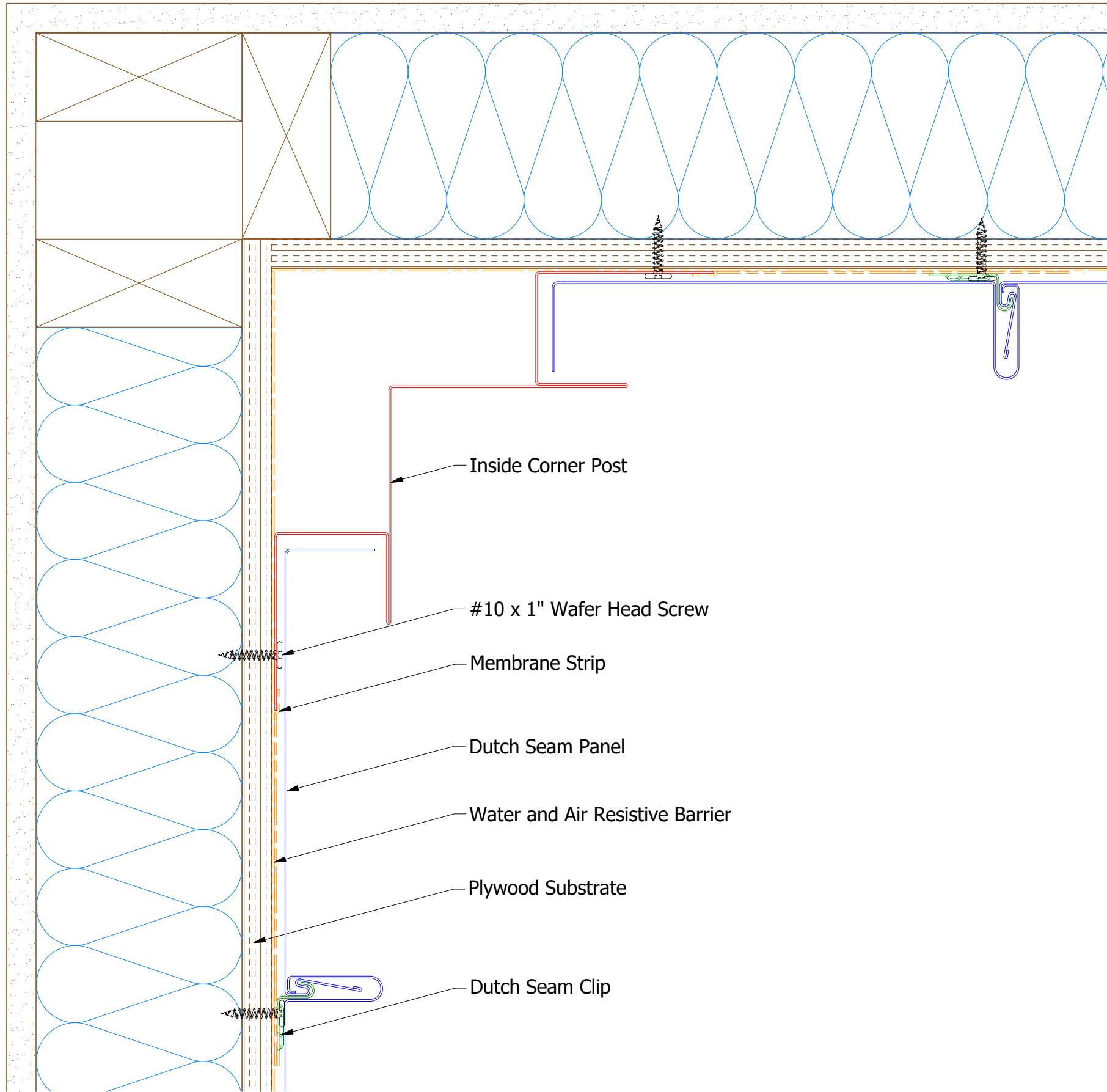
Snap Base



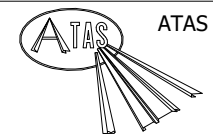
UNS200 - Snap J Cover

Note: \* denotes color side.

 <b>ATAS INTERNATIONAL, INC</b> Allentown PA 610-395-8445 Mesa AZ 480-558-7210		TITLE	
		Dutch Seam Endwall Detail	
DWG. NO.	DR	DATE	
	KRK	1/25/2023	
MATERIAL	APP	DATE	
REV. NO.	DATE	DESCRIPTION OF REVISION	BY APP
	SH. SIZE	B	SCALE X:X



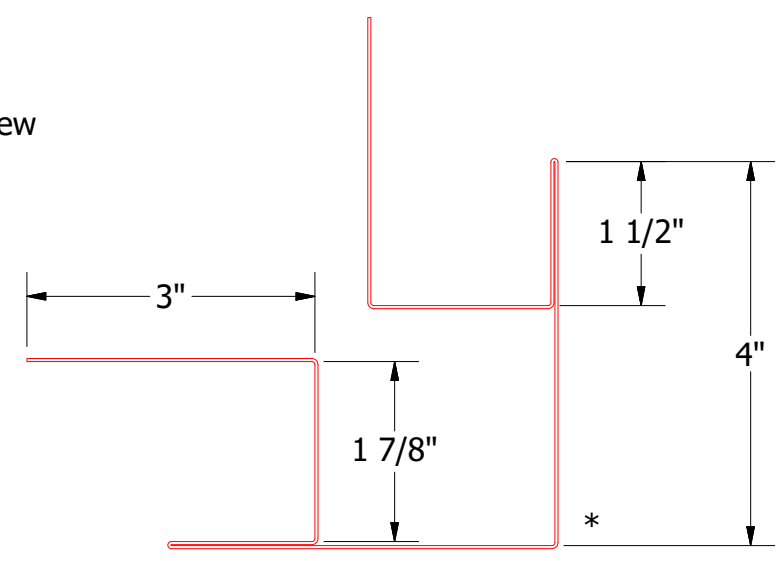
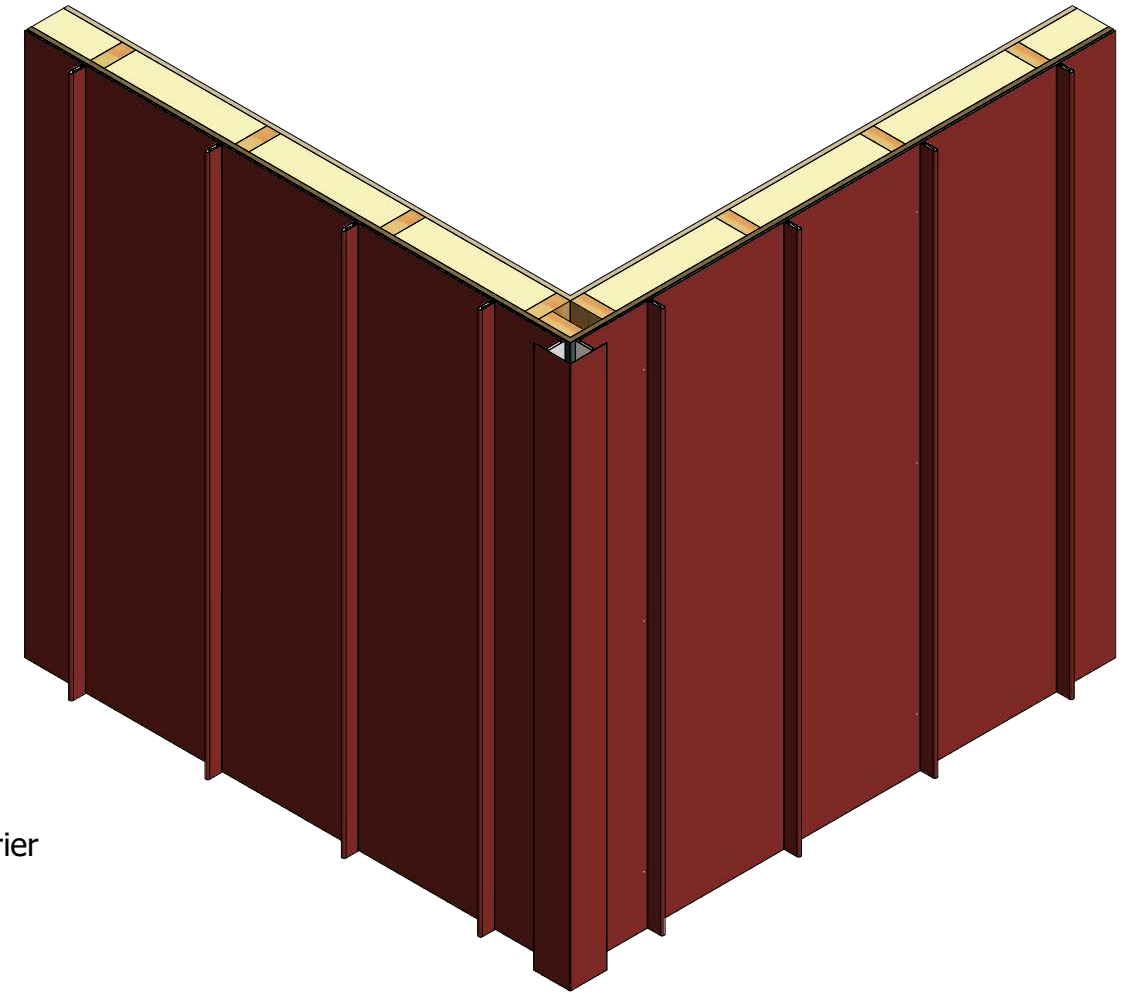
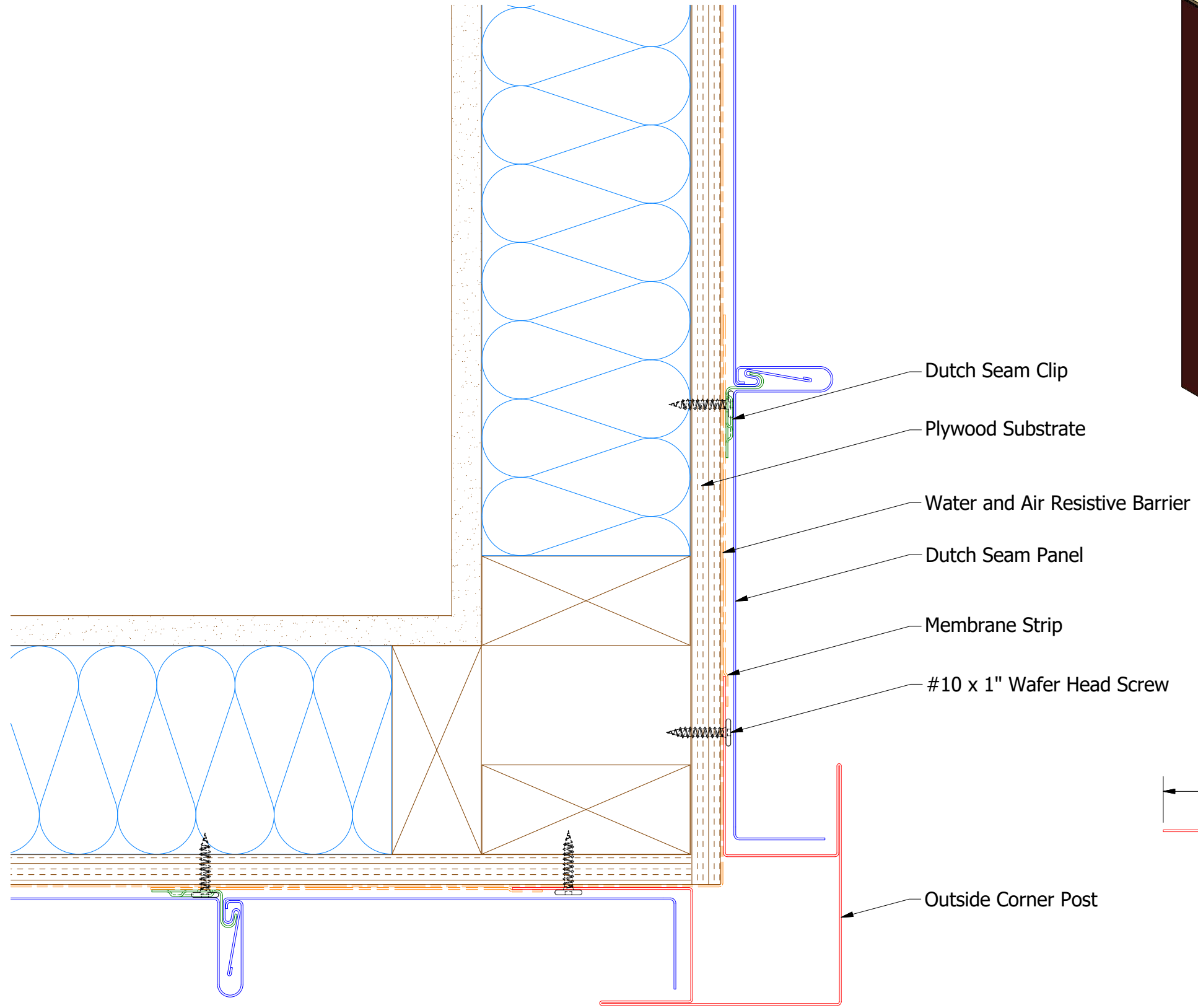
Inside Corner Post



ATAS INTERNATIONAL, INC  
 Allentown PA  
 610-395-8445  
 Mesa AZ  
 480-558-7210

TITLE Dutch Seam Inside Corner Detail

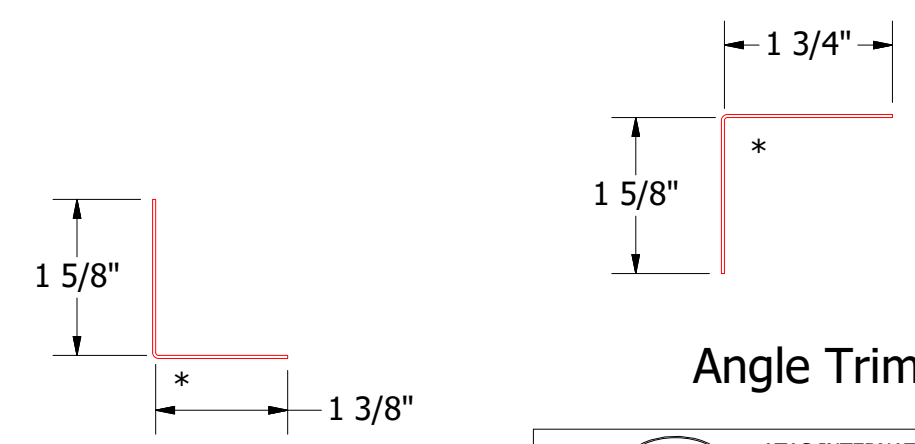
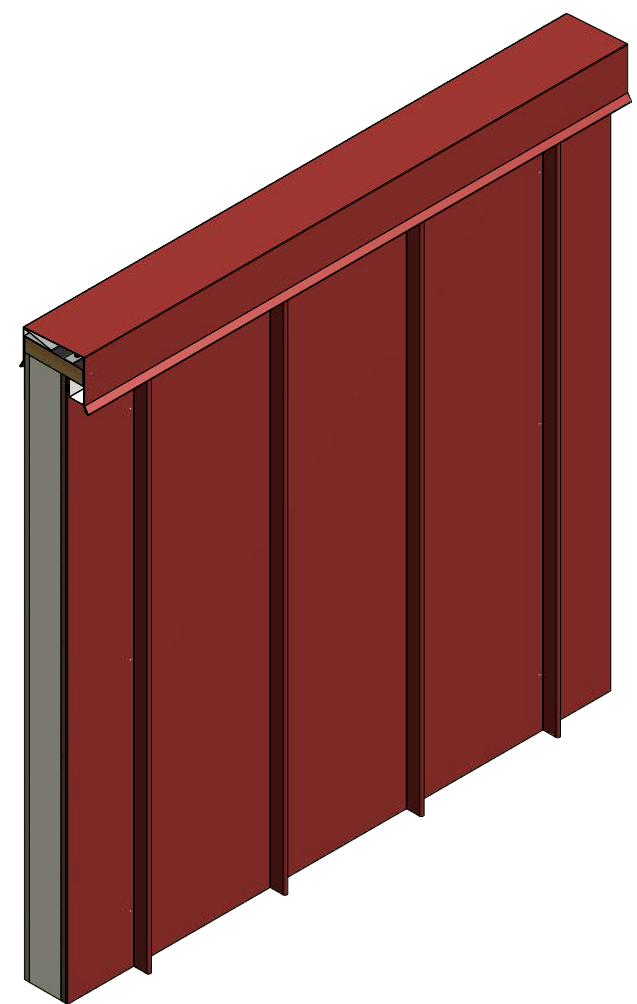
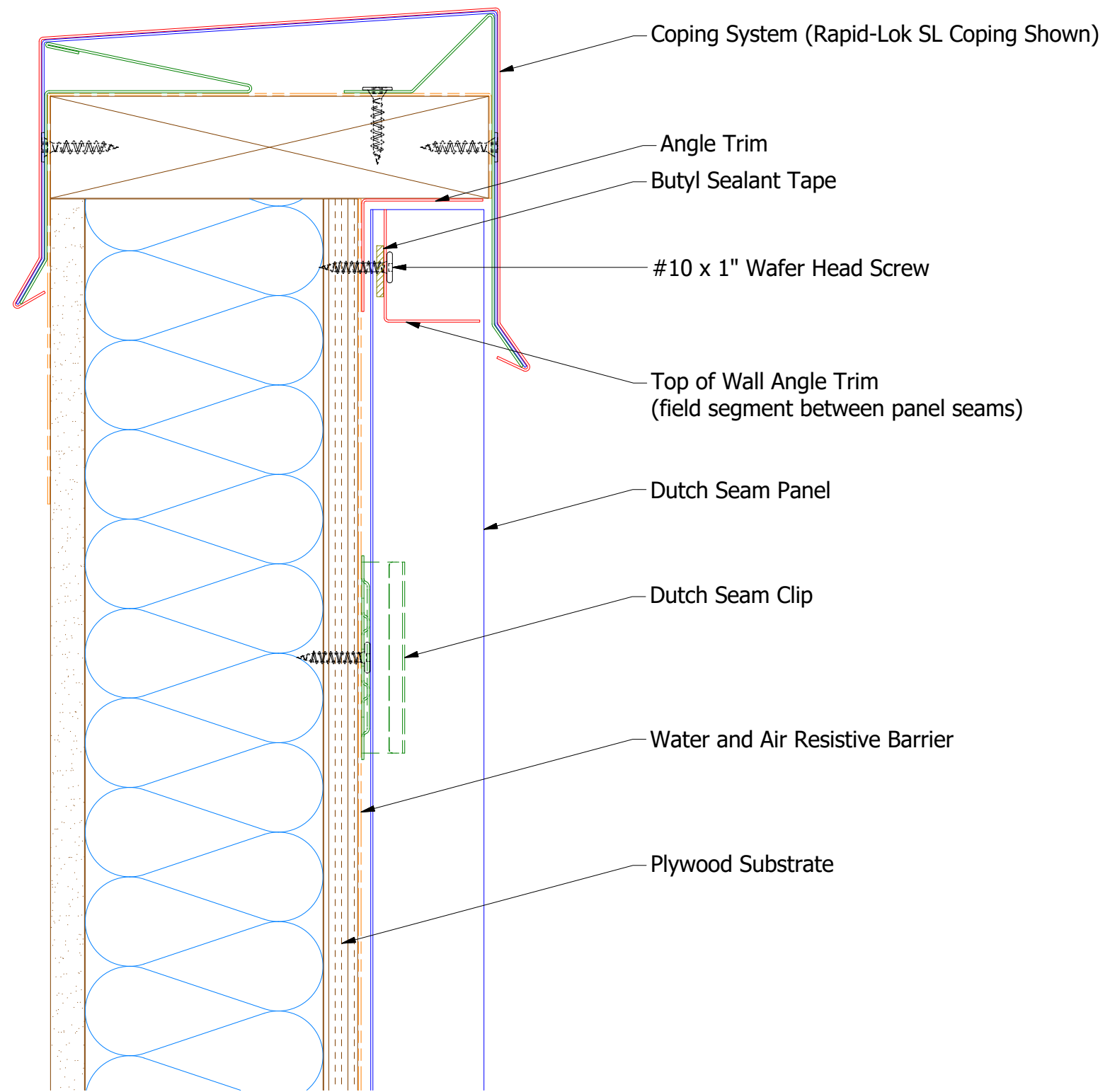
REV. NO.	DATE	DESCRIPTION OF REVISION	BY	APP	DWG. NO.	DR	DATE
						KRK	1/26/2023
					MATERIAL	APP	DATE
					SH. SIZE	B	SCALE X:X



Outside Corner Post


**ATAS INTERNATIONAL, INC**  
 Allentown PA  
 610-395-8445  
 Mesa AZ  
 480-558-7210

TITLE				Dutch Seam Outside Corner Detail	
DWG. NO.		DR		DATE	
		KRK		1/26/2023	
MATERIAL		APP		DATE	
REV. NO.	DATE	DESCRIPTION OF REVISION	BY	APP	SCALE
					B X:X



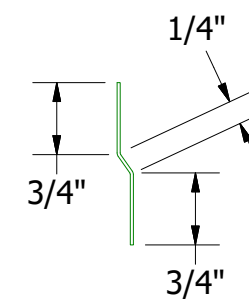
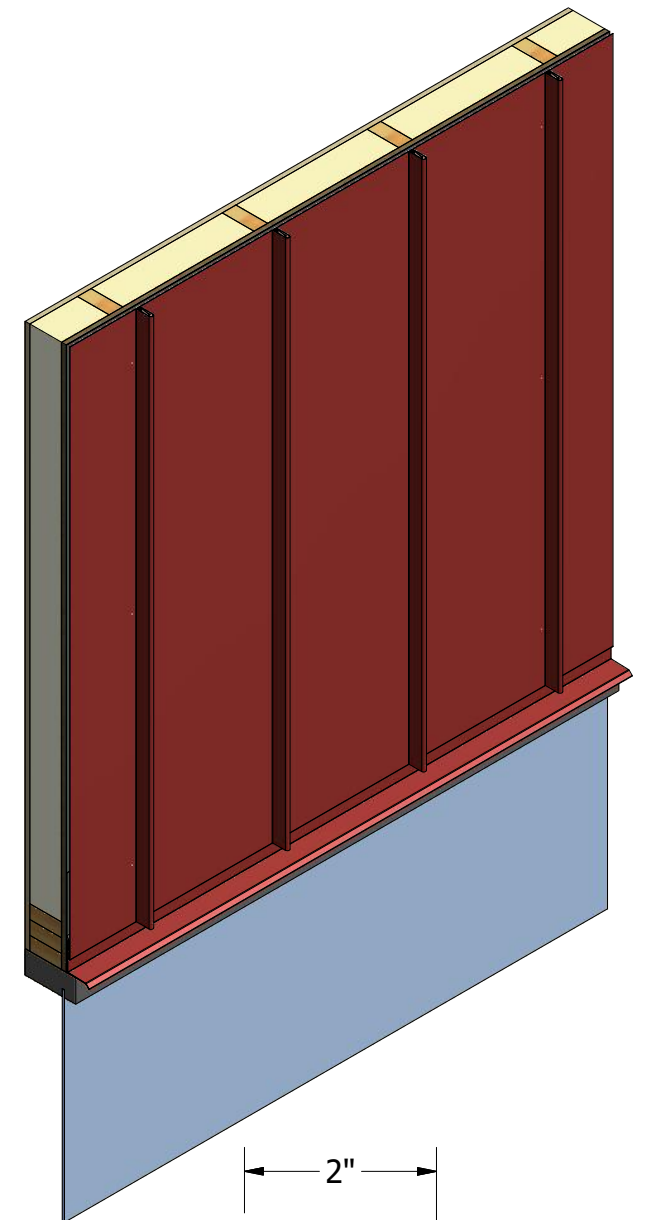
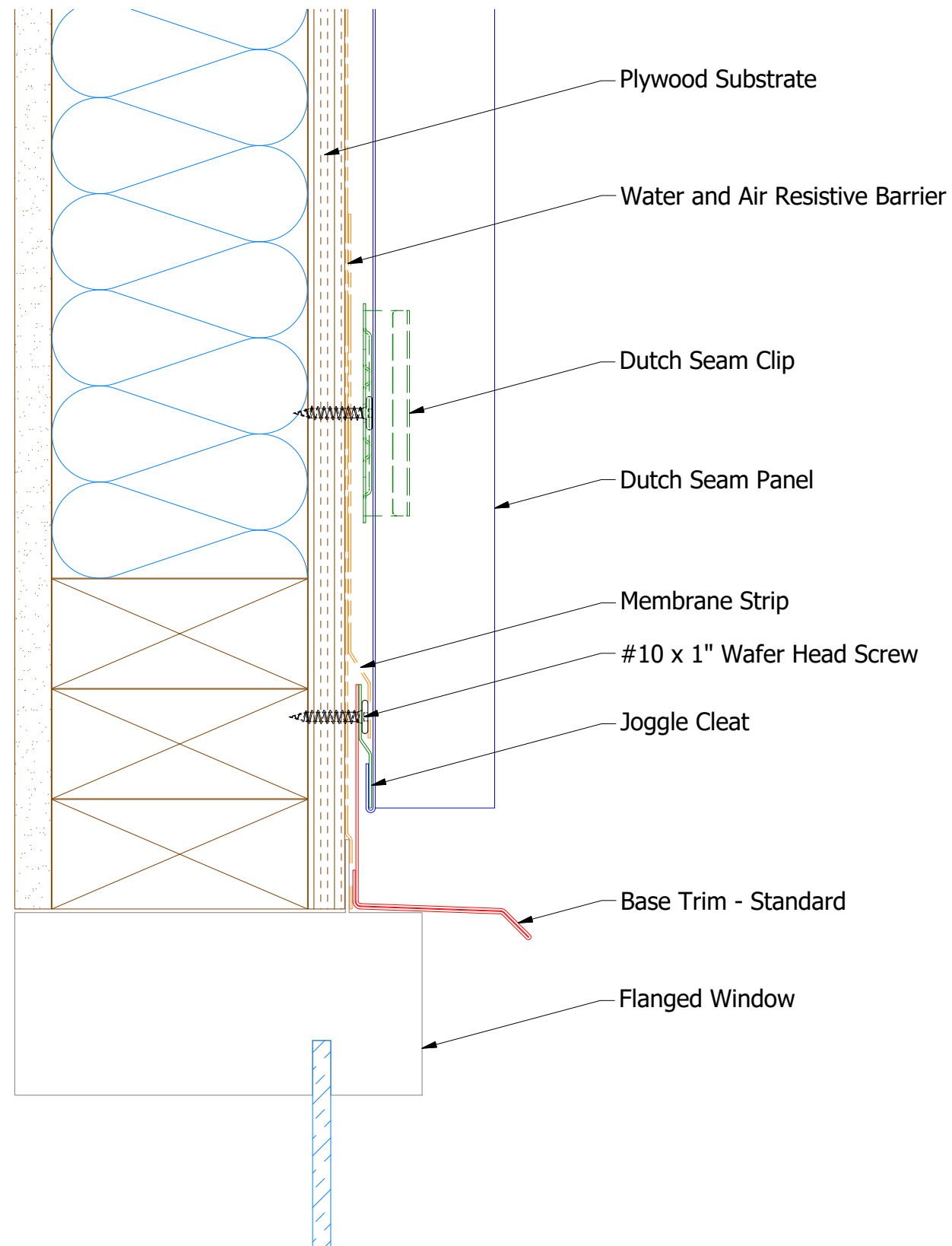
Top of Wall Angle Trim

Angle Trim

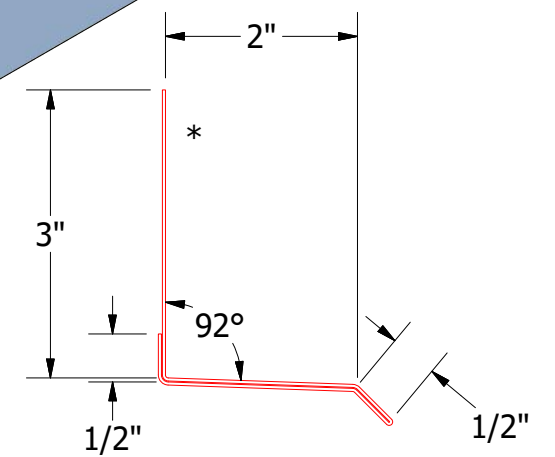
Note: \* denotes color side.

**ATAS** ATAS INTERNATIONAL, INC  
 Allentown PA  
 610-395-8445  
 Mesa AZ  
 480-558-7210

TITLE				Dutch Seam Top of Wall Detail	
DWG. NO.		DR		DATE	
		KRK		1/26/2023	
MATERIAL		APP		DATE	
REV. NO.	DATE	DESCRIPTION OF REVISION	BY	APP	SCALE
					B X:X



MDA975 - Joggle Cleat



MDA661 - Base Trim - Standard


**ATAS INTERNATIONAL, INC**  
 Allentown PA  
 610-395-8445  
 Mesa AZ  
 480-558-7210

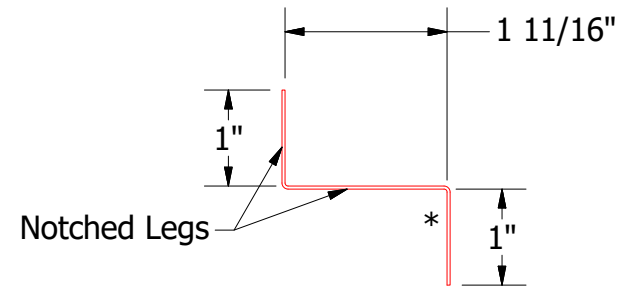
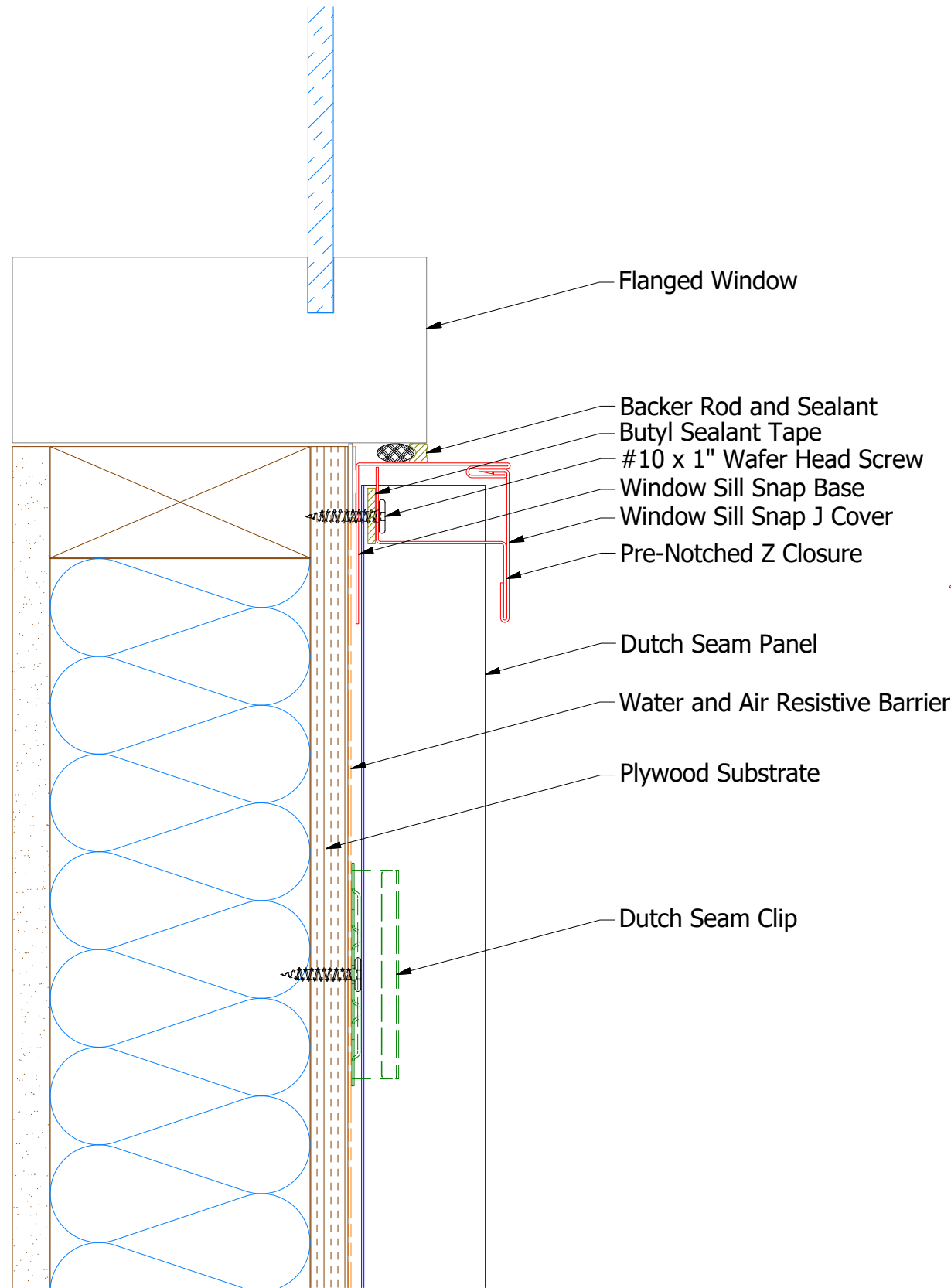
TITLE  
Dutch Seam Flanged Window Head Detail

REV. NO.	DATE	DESCRIPTION OF REVISION	BY	APP	DWG. NO.	DR	KRK	DATE	1/27/2023
						APP		DATE	
					MATERIAL	SH. SIZE	B	SCALE	X:X

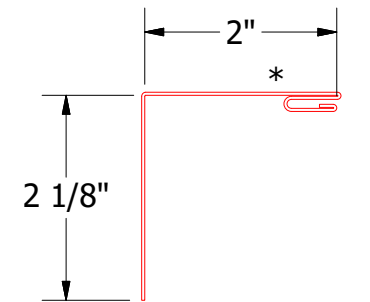
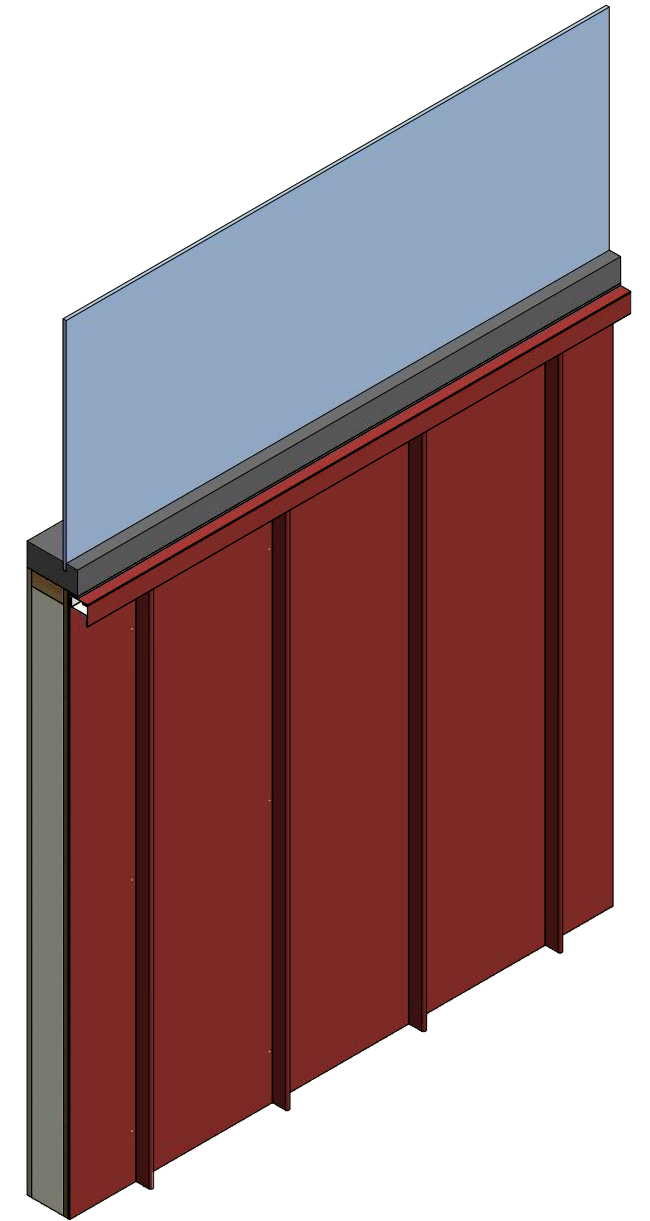
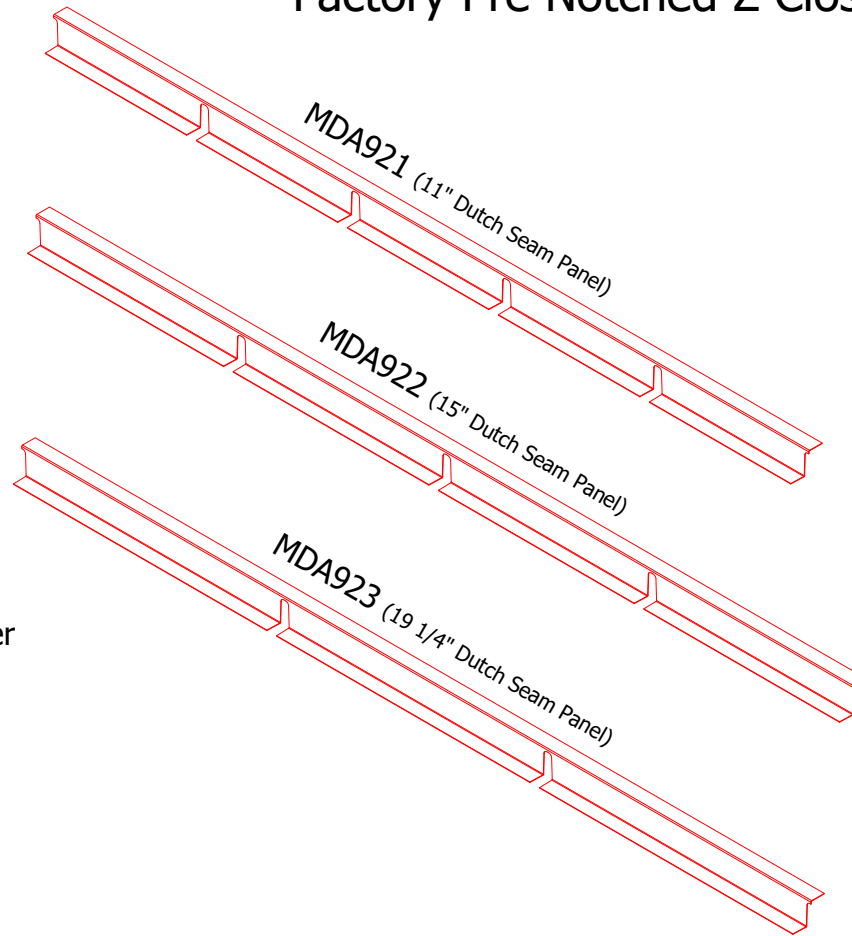
Note: \* denotes color side.



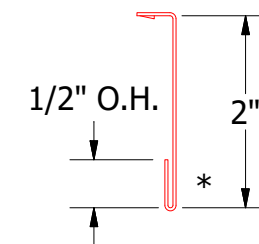




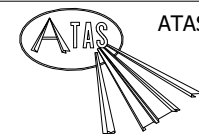
Factory Pre Notched Z Closure



Window Sill Snap Base



Window Sill Snap J Cover

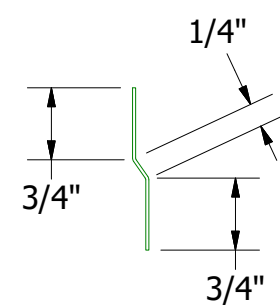
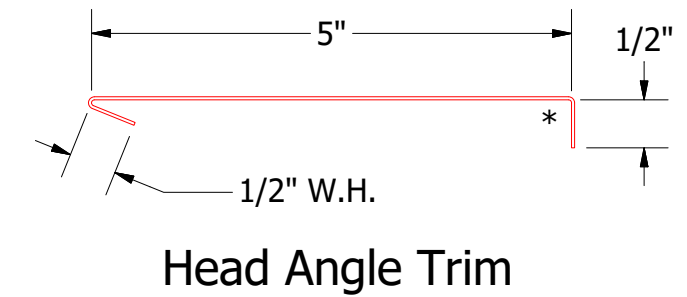
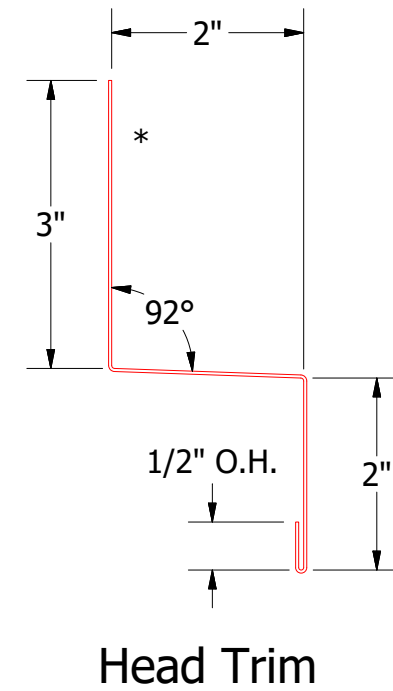
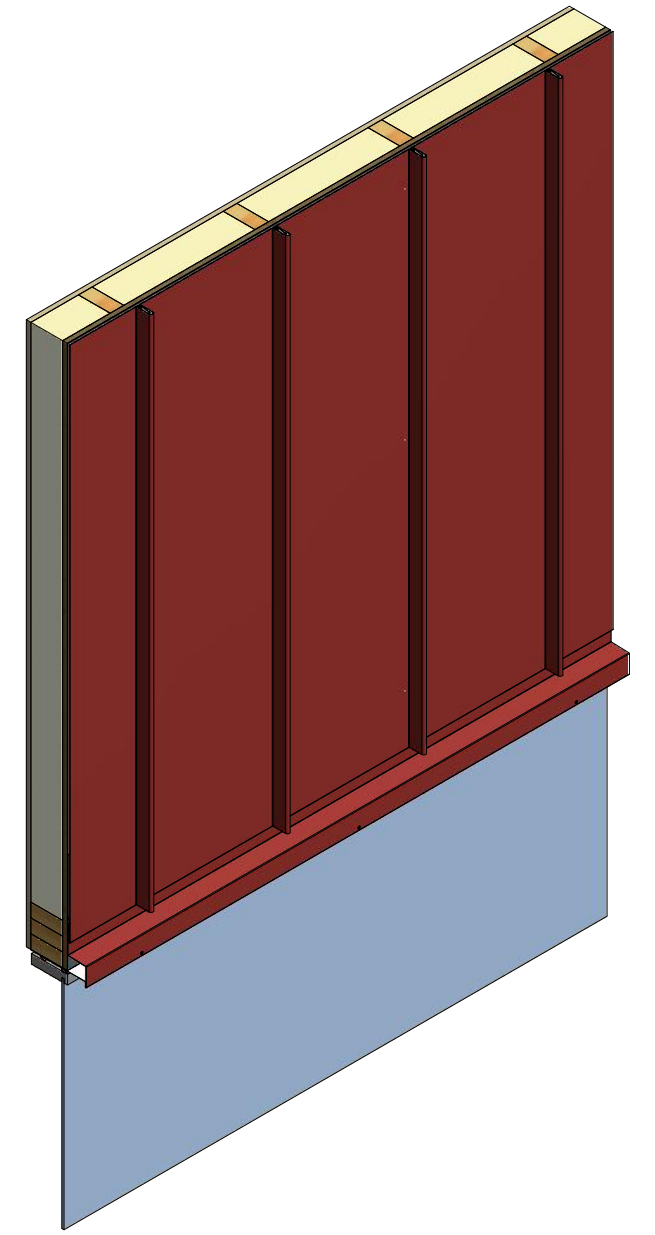
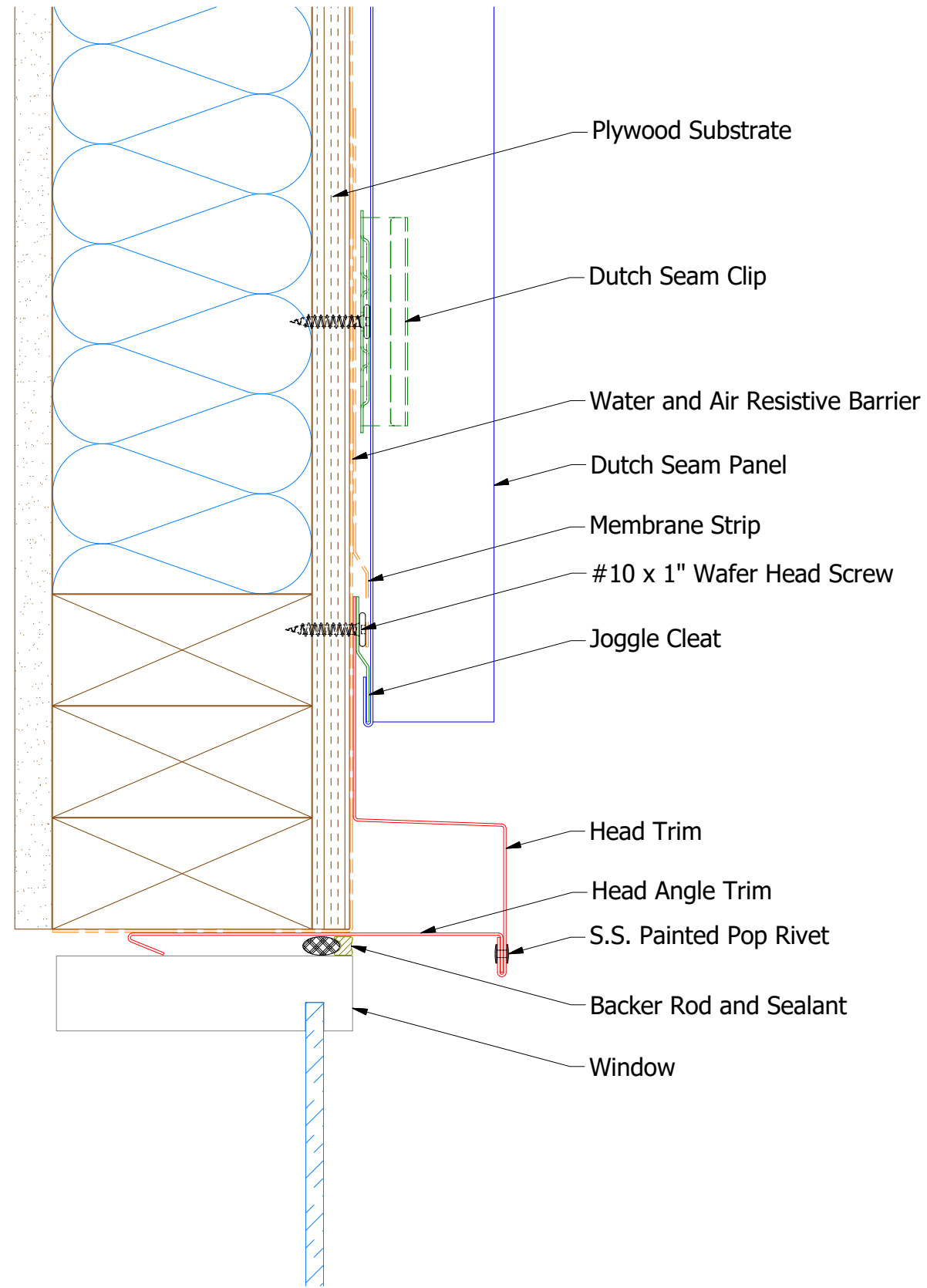


ATAS INTERNATIONAL, INC  
 Allentown PA  
 610-395-8445  
 Mesa AZ  
 480-558-7210

TITLE  
 Dutch Seam Flanged Window Sill Detail

REV. NO.	DATE	DESCRIPTION OF REVISION	BY	APP	DWG. NO.	DR	DATE
						KRK	1/27/2023
					MATERIAL	APP	DATE
					SH. SIZE	B	SCALE
							X:X

Note: \* denotes color side.

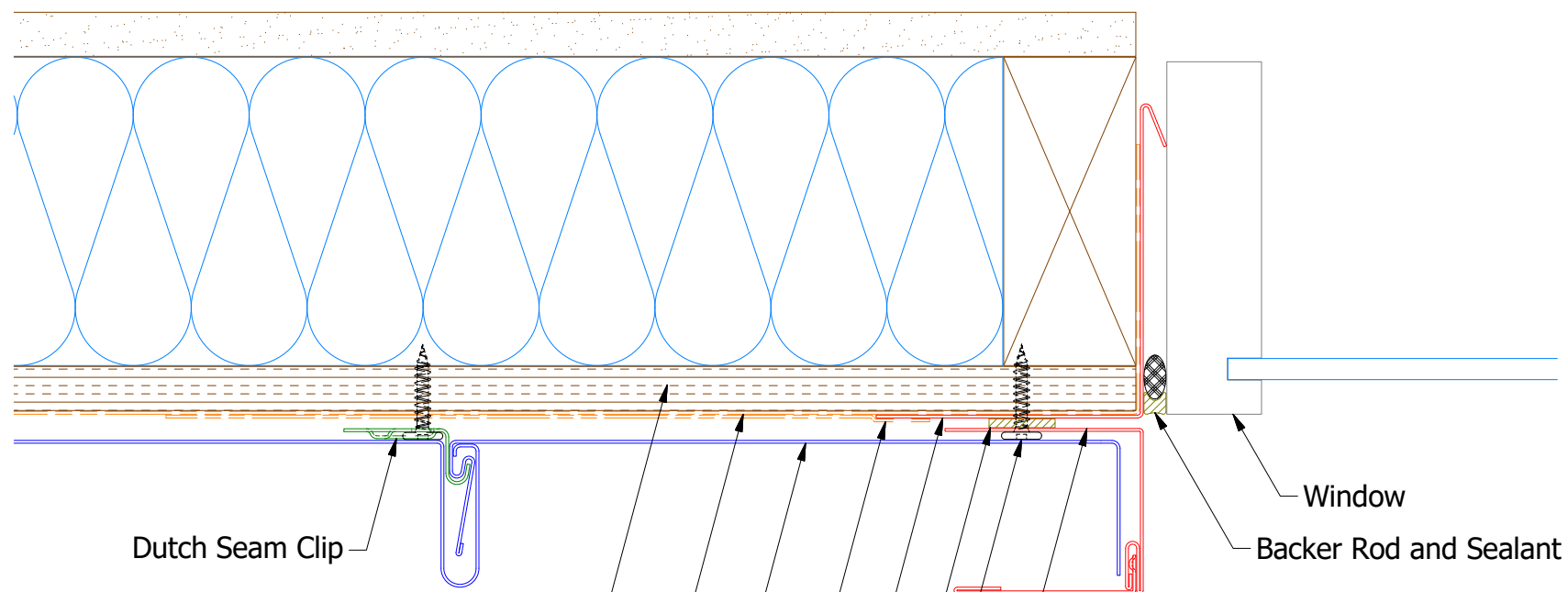


Note: \* denotes color side.


**ATAS INTERNATIONAL, INC**  
 Allentown PA  
 610-395-8445  
 Mesa AZ  
 480-558-7210

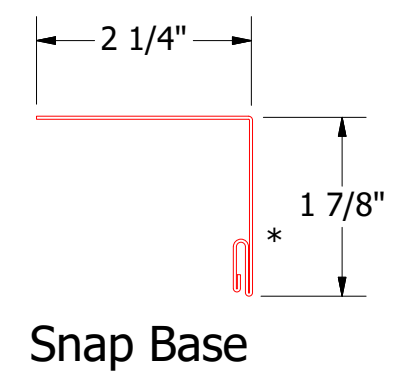
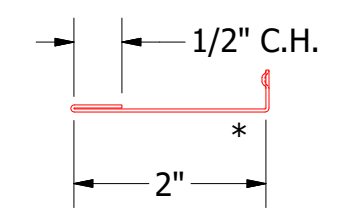
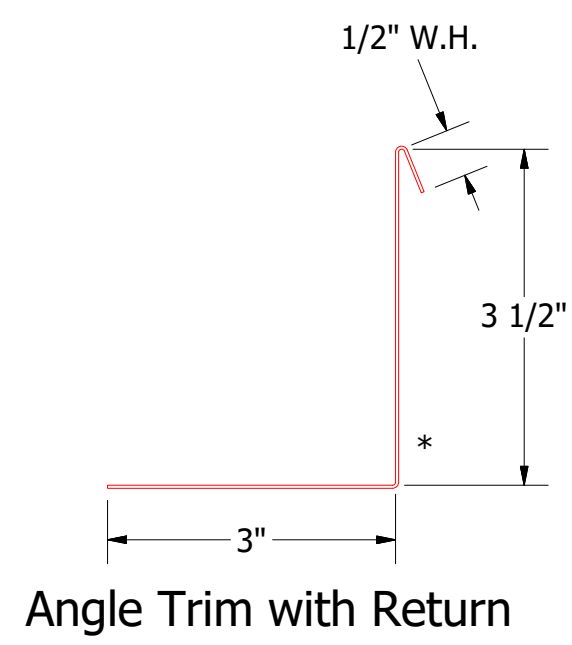
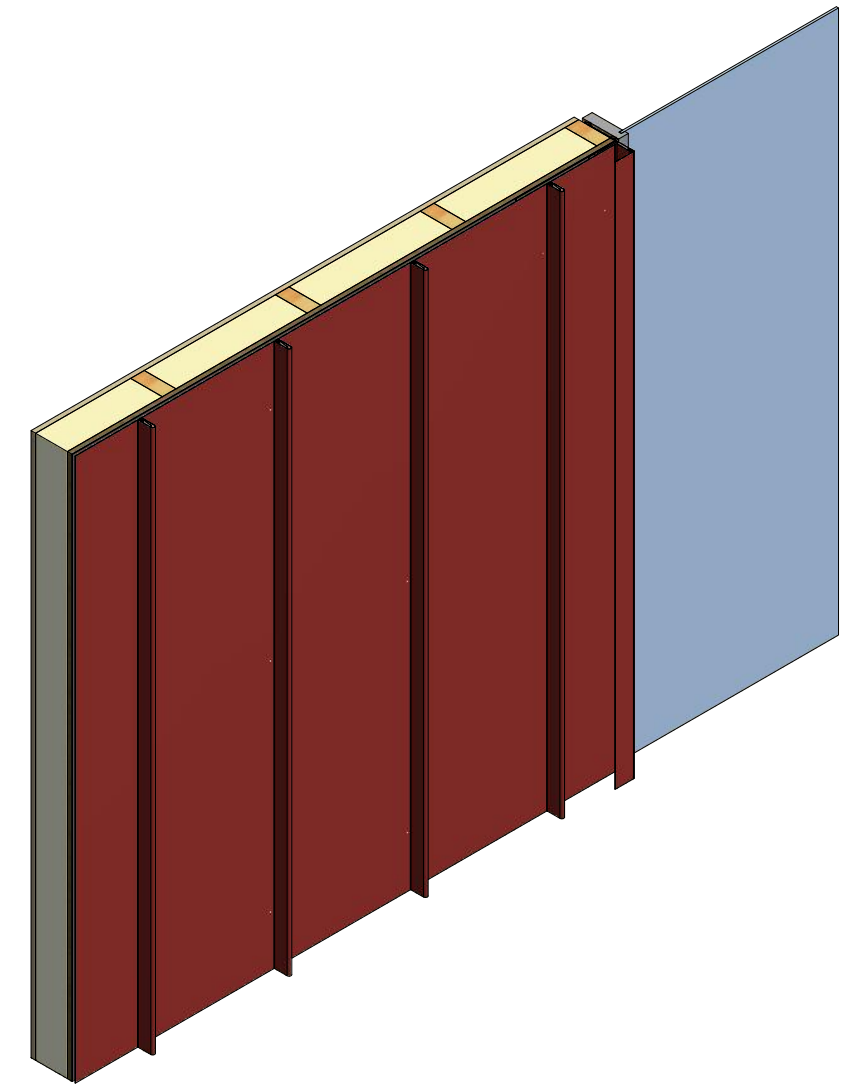
TITLE		<b>Dutch Seam Head Detail</b>	
DWG. NO.	DR	KRK	DATE
	APP		1/30/2023
MATERIAL	SH. SIZE	B	SCALE
			X:X

REV. NO.	DATE	DESCRIPTION OF REVISION	BY	APP



- Dutch Seam Clip
- Plywood Substrate
- Water and Air Resistive Barrier
- Dutch Seam Panel
- Membrane Strip
- Anlge Trim with Return
- Butyl Sealant Tape
- #10 x 1" Wafer Head Screw
- Snap Base
- Snap J Cover

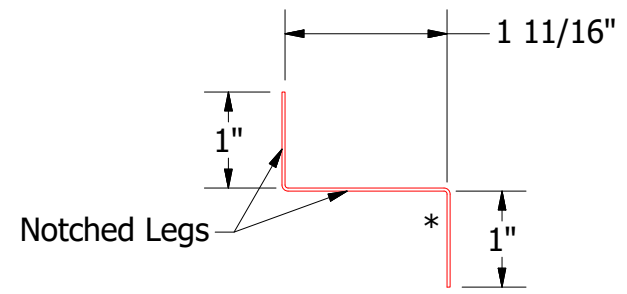
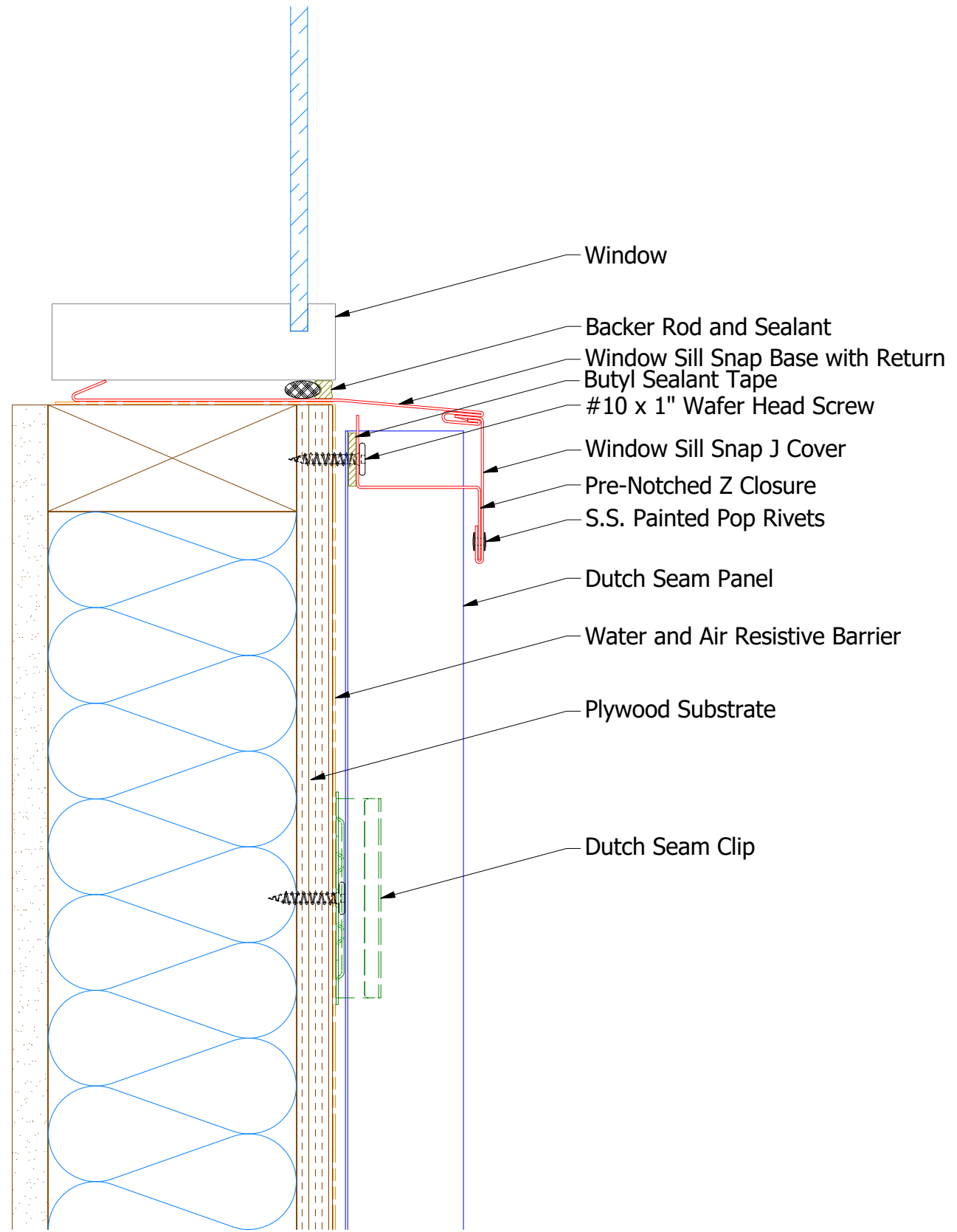
Window  
Backer Rod and Sealant



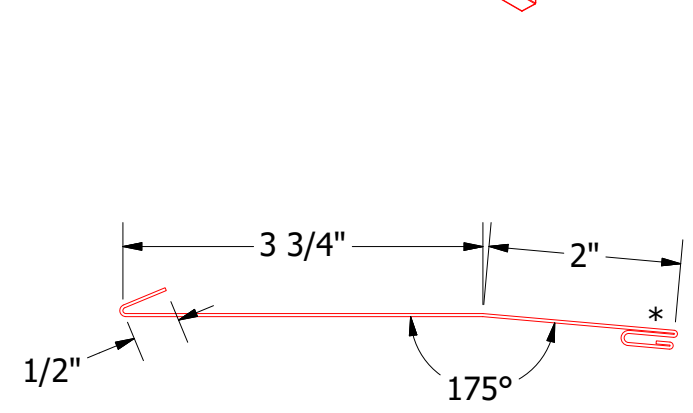
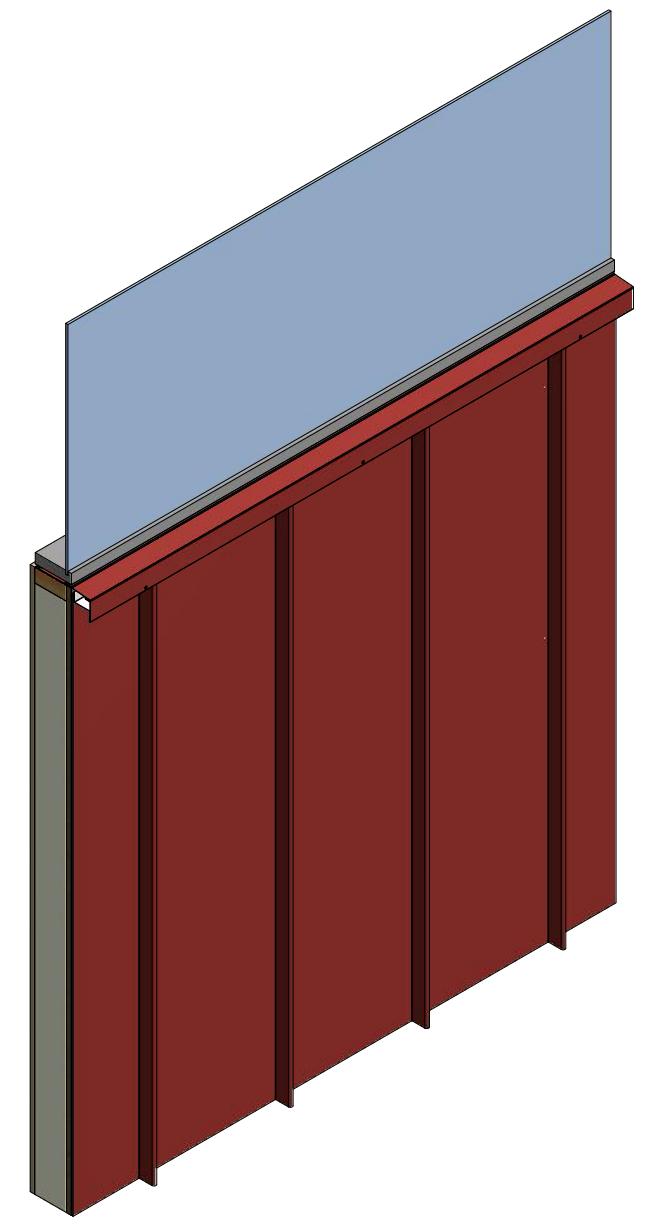
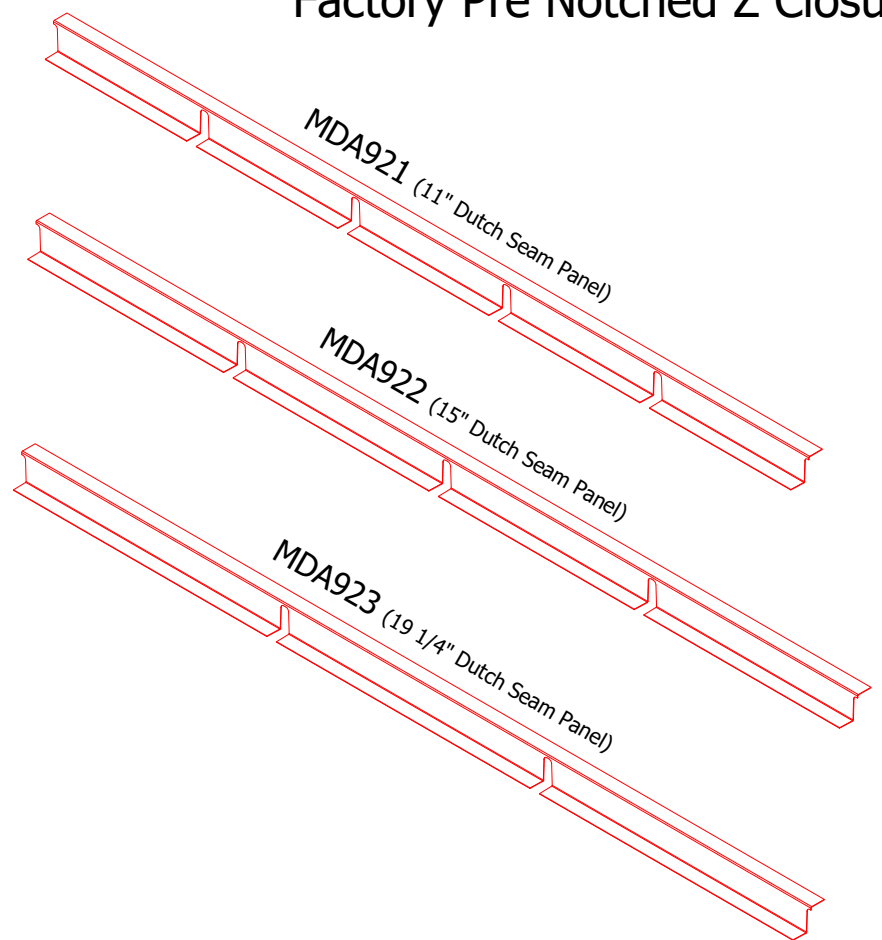
Note: \* denotes color side.

**UNS200 - Snap J Cover**

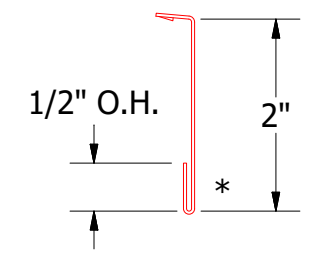
		<b>ATAS INTERNATIONAL, INC</b> Allentown PA 610-395-8445 Mesa AZ 480-558-7210	
<b>TITLE</b> Dutch Seam Jamb Detail			
<b>DWG. NO.</b> _____		<b>DR</b> KRK	<b>DATE</b> 1/30/2023
<b>MATERIAL</b> _____		<b>APP</b> _____	<b>DATE</b> _____
<b>REV. NO.</b> _____	<b>DATE</b> _____	<b>DESCRIPTION OF REVISION</b> _____	<b>BY</b> _____
<b>SH. SIZE</b> B		<b>SCALE</b> X:X	



Factory Pre Notched Z Closure



Window Sill Snap Base with Return



Window Sill Snap J Cover

Note: \* denotes color side.

		<b>ATAS INTERNATIONAL, INC</b> Allentown PA 610-395-8445 Mesa AZ 480-558-7210	
<b>TITLE</b> Dutch Seam Window Sill Detail			
<b>DWG. NO.</b>		<b>DR</b> KRK	<b>DATE</b> 1/30/2023
<b>REV. NO.</b>		<b>APP</b>	<b>DATE</b>
<b>DATE</b>		<b>SH. SIZE</b> B	<b>SCALE</b> X:X
<b>DESCRIPTION OF REVISION</b>		<b>BY</b>	<b>APP</b>
