

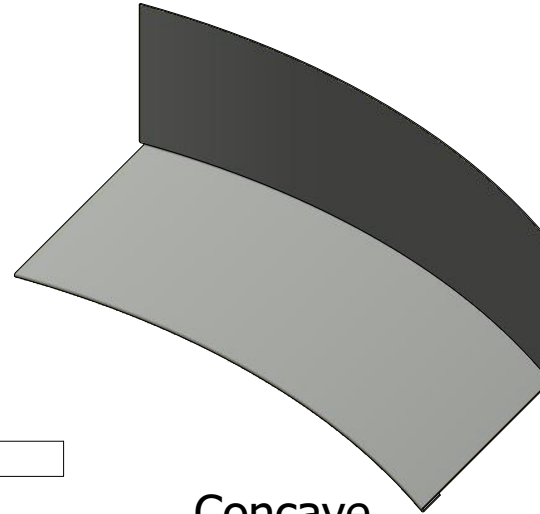
Dimension X:
 Standard is 4"
 Stretchout = X + 0.500"

Radius:

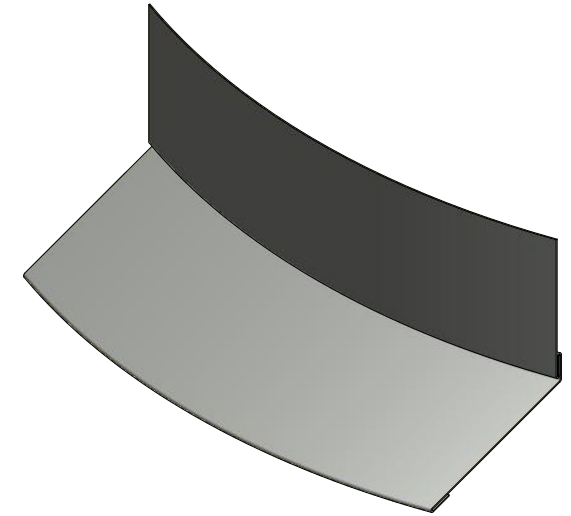
Angle:

Dimension Y:
 Stretchout = Y + 1.625"

1/2" O.H.




Concave



Convex

Order #

Concave: 

Convex: 

Material

Alum 24 ga 55% Al-Zn alloy coated steel with acrylic coating

Finish:

Color:

Trim Length:

Number of Pieces:

Note: * denotes color side.

Note: Trims shown as Standard, Job Specific Dimensions may alter Final Product Design.

REV. NO.	DATE	DESCRIPTION OF REVISION	BY	APP
02	6/28/2022	Added Final Product Design Disclaimer	KRK	
01	7/29/2019	Added Galv + to Material Offering	KRK	

		ATAS INTERNATIONAL, INC Allentown PA 610-395-8445 Mesa AZ 480-558-7210	
		TITLE Radius Trim Order Sheet - Headwall	
DWG. NO.	DR	DATE	
	KRK	4/24/2019	
MATERIAL	APP	DATE	
SH. SIZE	A	SCALE	X:X