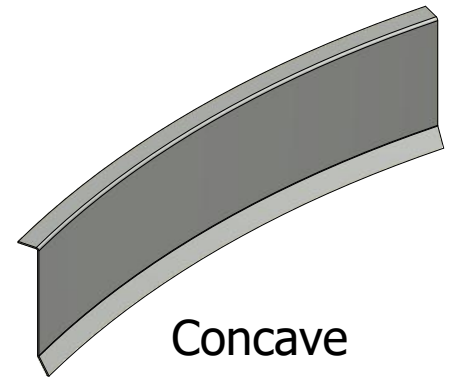
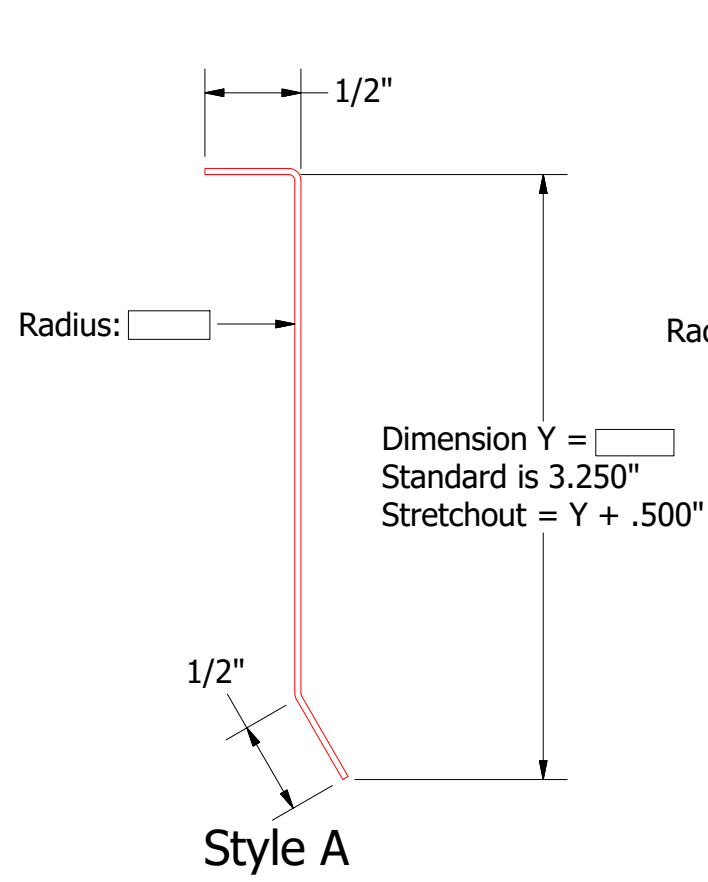


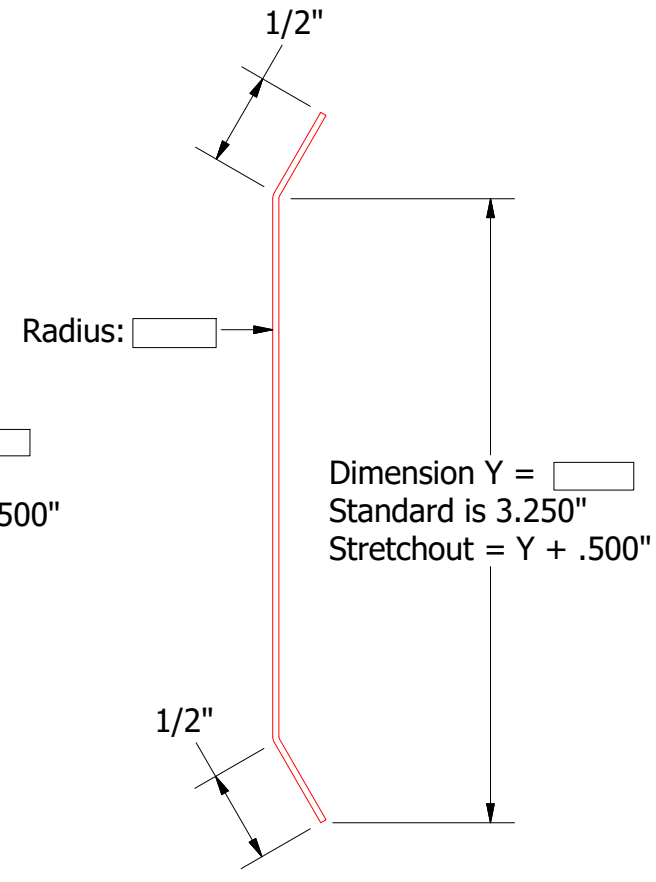
Convex



Concave





Style A



Style B

Order #

Concave: 

Convex: 

Material 24 ga 55% Al-Zn alloy coated steel with acrylic coating

Finish:

Color:

Trim Length:

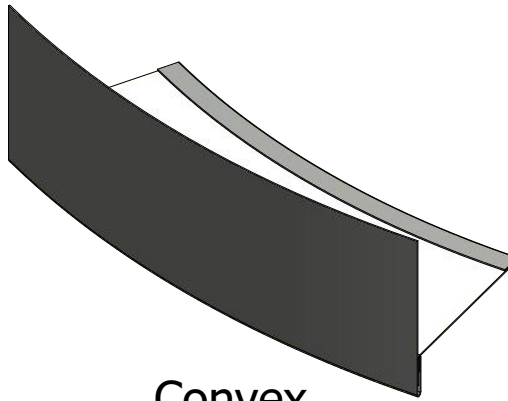
Number of Pieces:



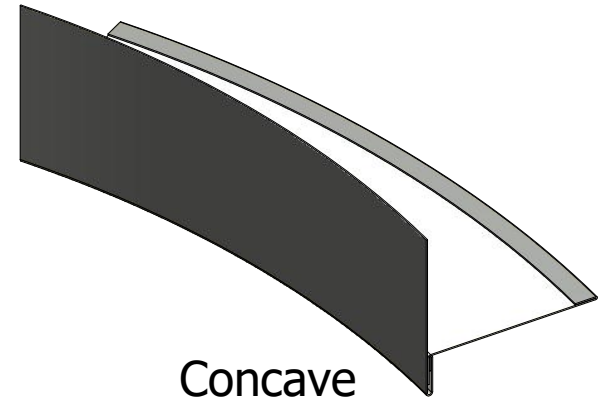
ATAS INTERNATIONAL, INC
 Allentown PA
 610-395-8445
 Mesa AZ
 480-558-7210

Note: * denotes color side.
 Note: Trims shown as Standard, Job Specific Dimensions may alter Final Product Design.

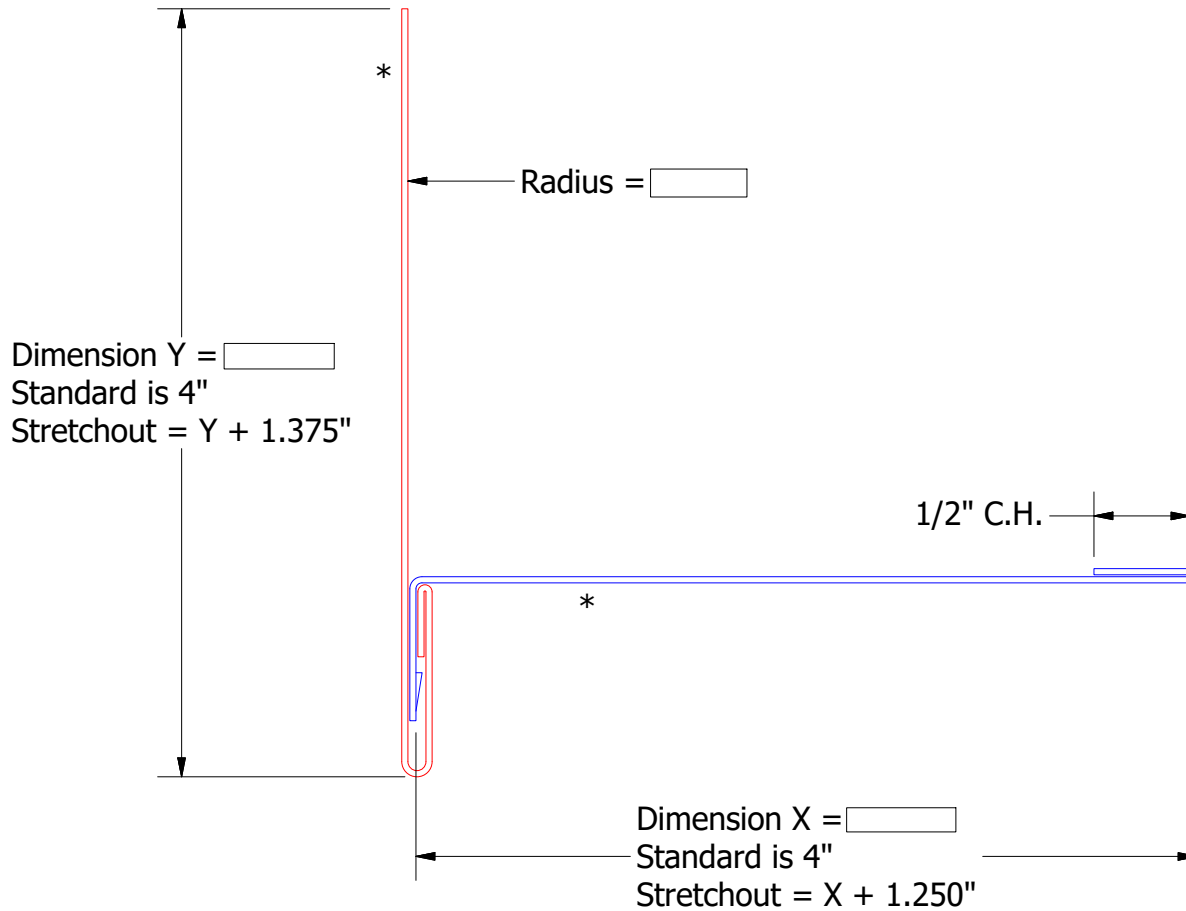
				TITLE		Radius Trim Order Sheet - Counterflashing	
				DWG. NO.		DR	DATE
						KRK	7/30/2019
				MATERIAL		APP	DATE
01	6/28/2022	Added Final Product Design Disclaimer	KRK				
REV. NO.	DATE	DESCRIPTION OF REVISION	BY	APP	SH. SIZE	A	SCALE
							X:X



Convex



Concave



Order #

Concave:

Convex:

Material

Alum 24 ga 55% Al-Zn alloy coated steel with acrylic coating

Finish:

Color:

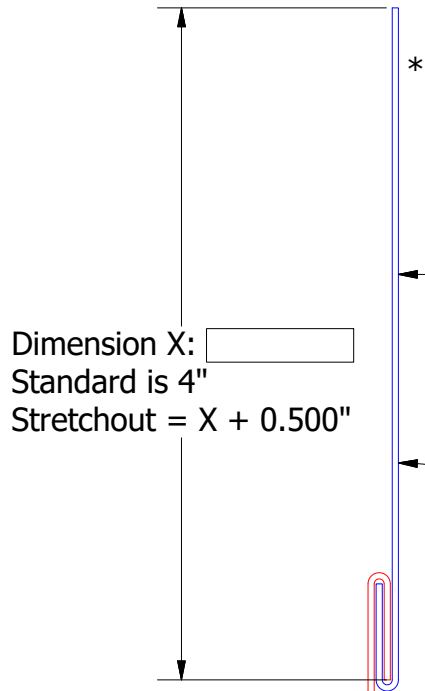
Trim Length:

Number of Pieces:

ATAS INTERNATIONAL, INC
 Allentown PA
 610-395-8445
 Mesa AZ
 480-558-7210

Note: * denotes color side.
 Note: Trims shown as Standard, Job Specific Dimensions may alter Final Product Design.

TITLE Radius Trim Order Sheet - Fascia Trim				DWG. NO.		DR KRK	DATE 7/31/2019
REV. NO.				DATE		MATERIAL	
01	6/28/2022	Added Final Product Design Disclaimer	KRK			SH. SIZE A	SCALE X:X
		DESCRIPTION OF REVISION	BY	APP			



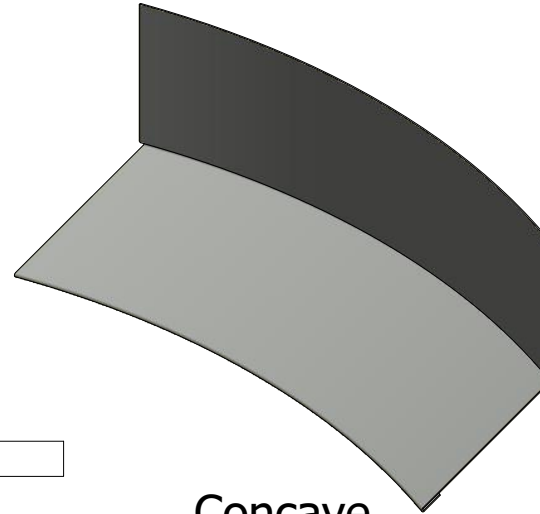
Dimension X:
 Standard is 4"
 Stretchout = X + 0.500"

Radius:

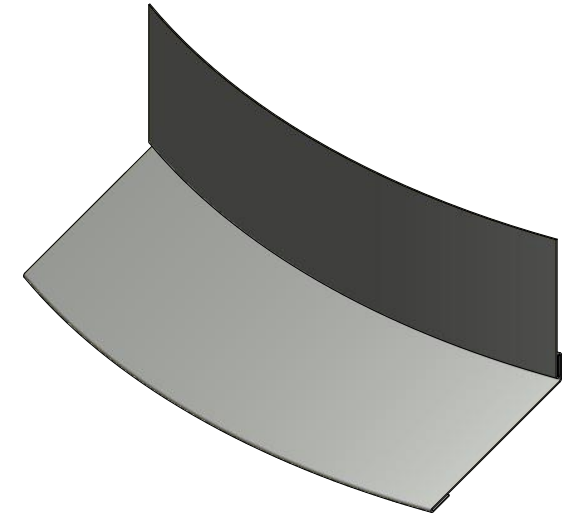
Angle:

Dimension Y:
 Stretchout = Y + 1.625"

1/2" O.H.




Concave



Convex

Order #

Concave: 

Convex: 

Material

Alum 24 ga 55% Al-Zn alloy coated steel with acrylic coating

Finish:

Color:

Trim Length:

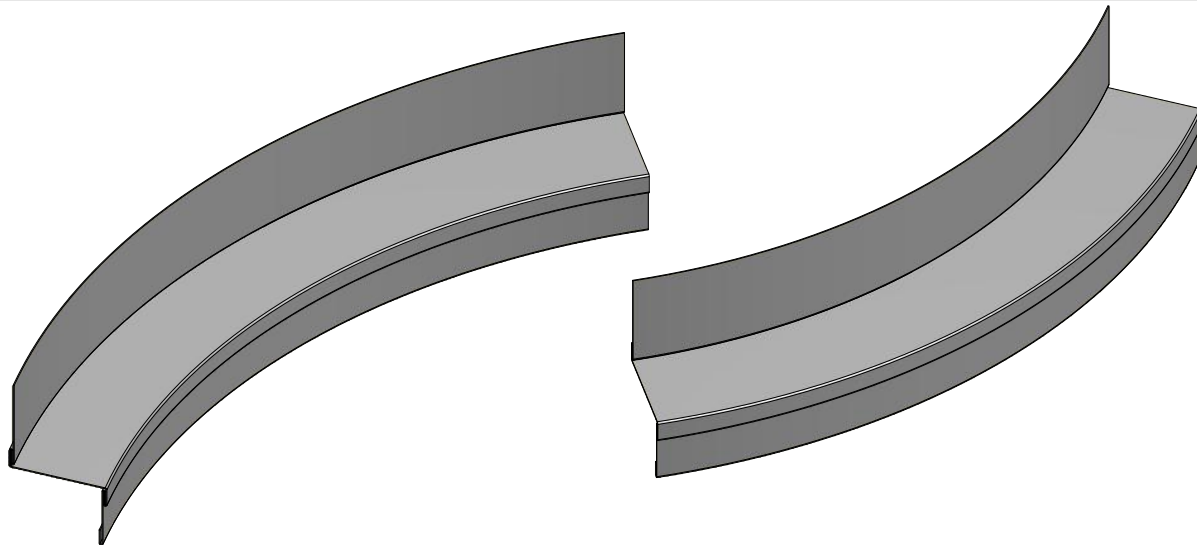
Number of Pieces:

Note: * denotes color side.

Note: Trims shown as Standard, Job Specific Dimensions may alter Final Product Design.

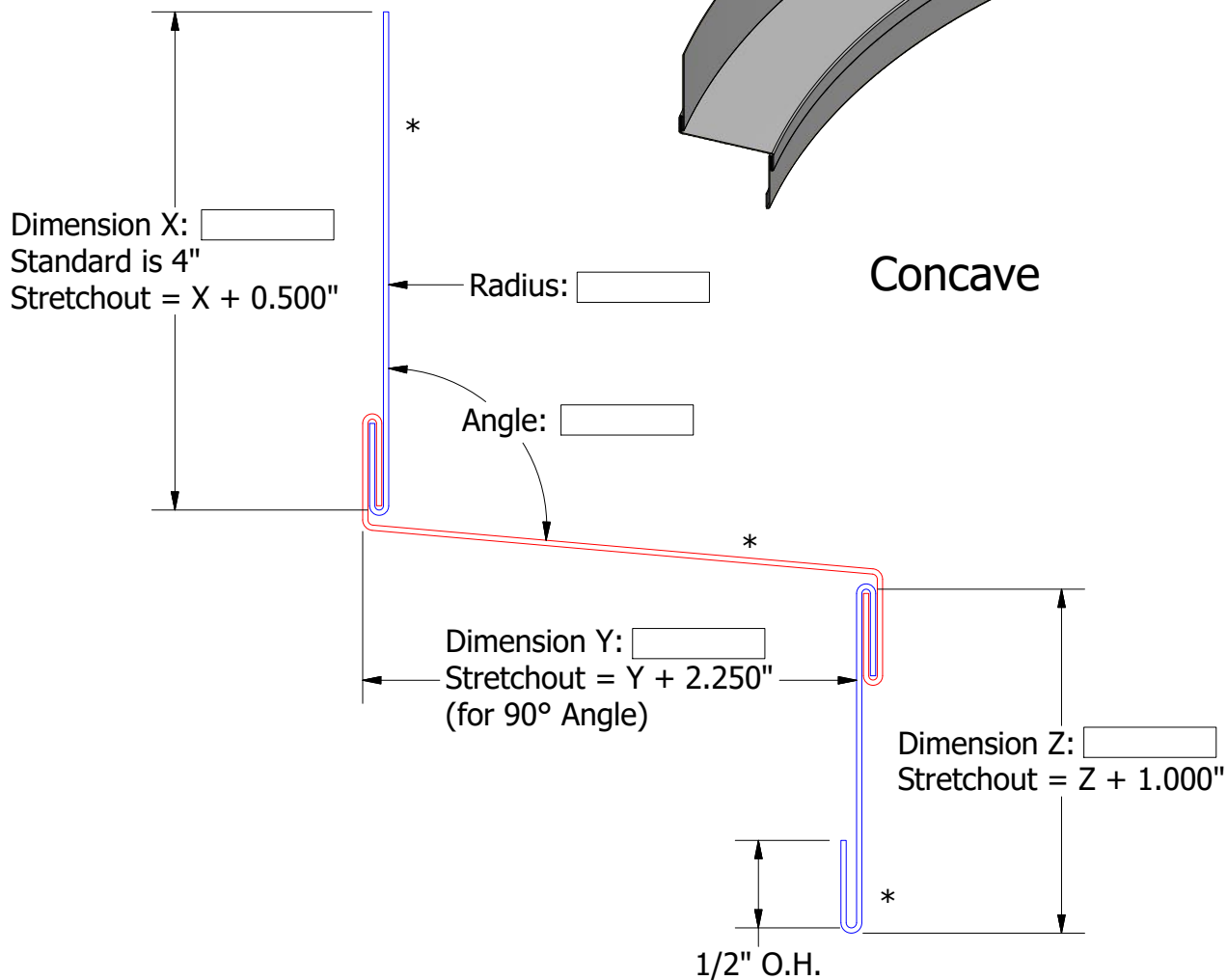
REV. NO.	DATE	DESCRIPTION OF REVISION	BY	APP
02	6/28/2022	Added Final Product Design Disclaimer	KRK	
01	7/29/2019	Added Galv + to Material Offering	KRK	

		ATAS INTERNATIONAL, INC Allentown PA 610-395-8445 Mesa AZ 480-558-7210	
		TITLE Radius Trim Order Sheet - Headwall	
DWG. NO.	DR	DATE	
	KRK	4/24/2019	
MATERIAL	APP	DATE	
SH. SIZE	A	SCALE	X:X





Concave

Convex



Order #

Concave: 

Convex: 

Material

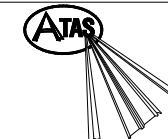
Alum 24 ga 55% Al-Zn alloy coated steel with acrylic coating

Finish:

Color:

Trim Length:

Number of Pieces:

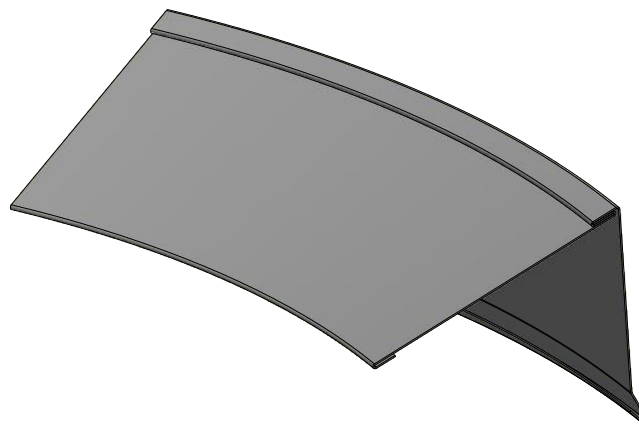


ATAS INTERNATIONAL, INC
 Allentown PA
 610-395-8445
 Mesa AZ
 480-558-7210

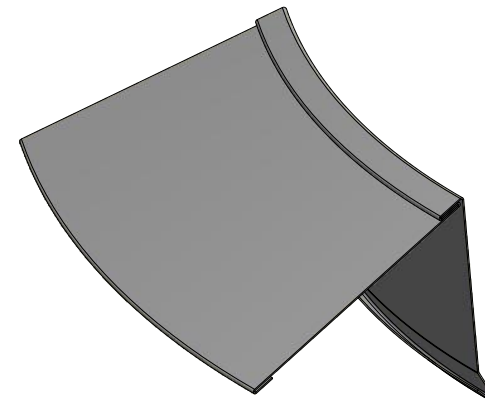
Note: * denotes color side.

Note: Trims shown as Standard, Job Specific Dimensions may alter Final Product Design.

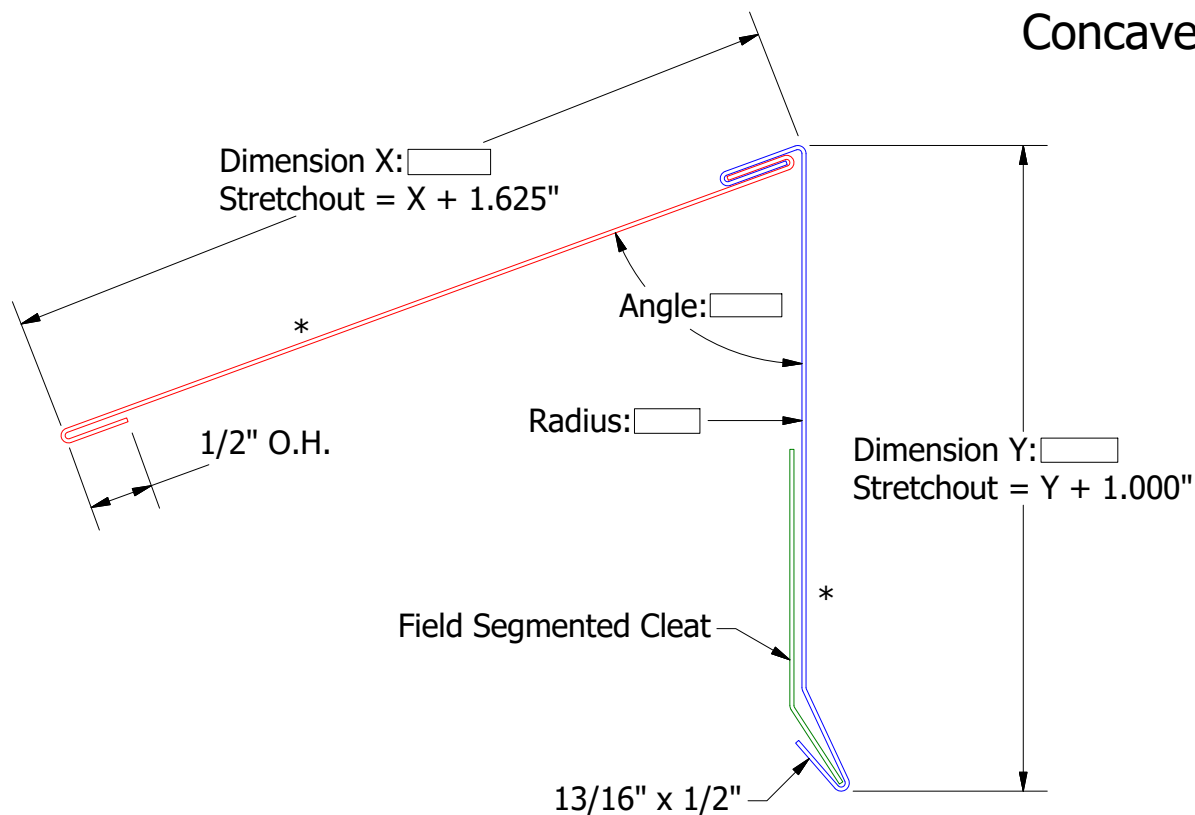
				TITLE Radius Trim Order Sheet - Ledge Flashing	
				DWG. NO.	DR KRK DATE 10/19/2020
01 6/28/2022 Added Final Product Design Disclaimer KRK				MATERIAL	APP DATE
REV. NO.	DATE	DESCRIPTION OF REVISION	BY	APP	SH. SIZE A SCALE X:X




Concave




Convex



Order #

Concave: 

Convex: 

Material


Alum 24 ga 55% Al-Zn alloy coated steel with acrylic coating

Finish:

Color:

Trim Length:

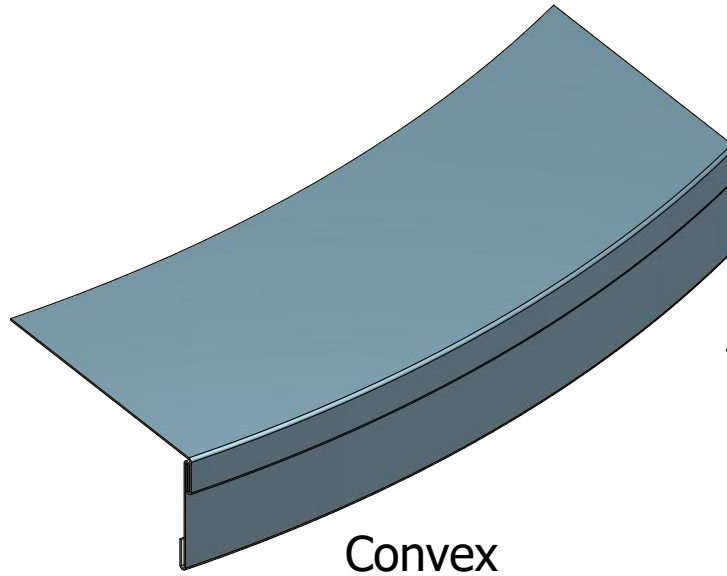
Number of Pieces:

 ATAS INTERNATIONAL, INC
 Allentown PA
 610-395-8445
 Mesa AZ
 480-558-7210

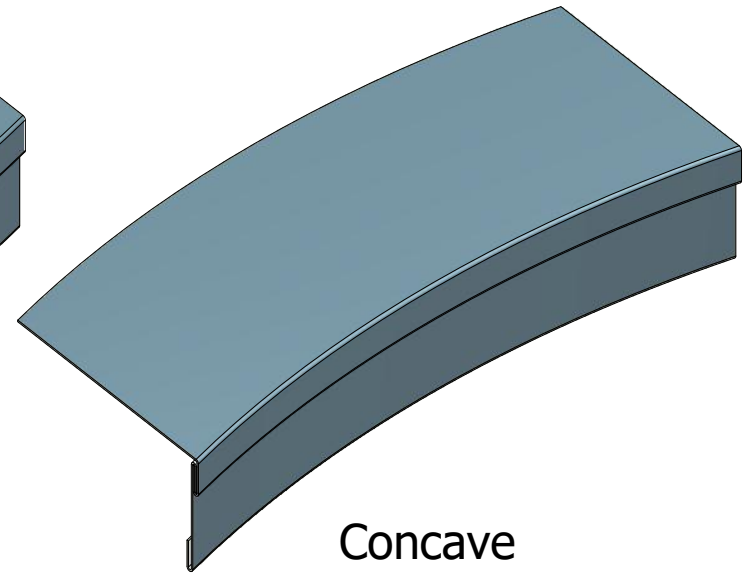
Note: * denotes color side.

Note: Trims shown as Standard, Job Specific Dimensions may alter Final Product Design.

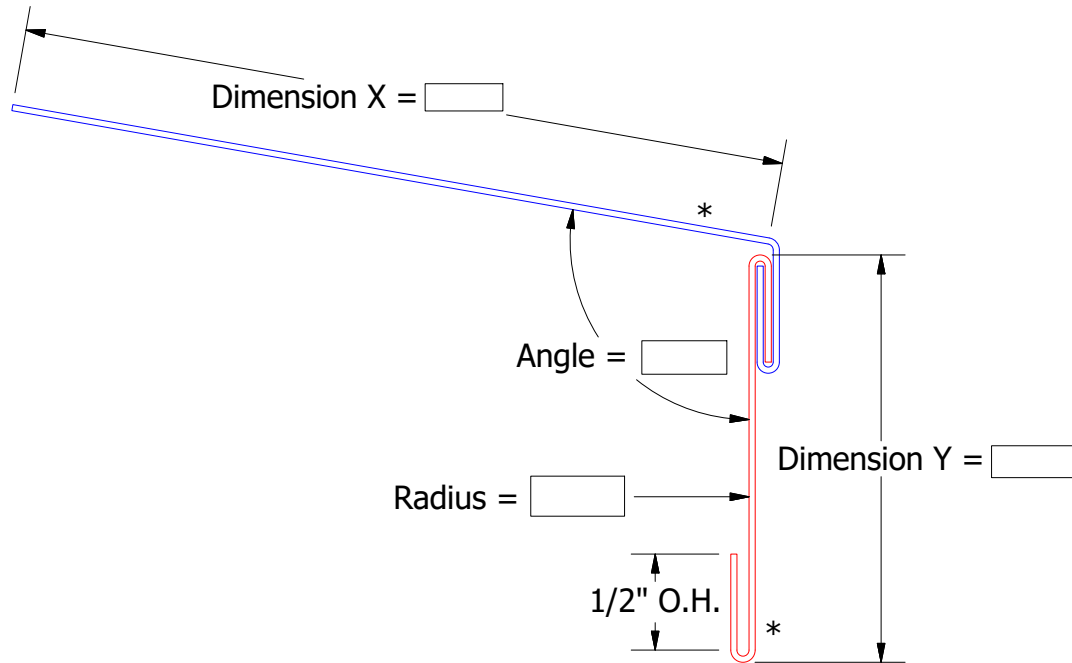
				TITLE		Radius Trim Order Sheet - Shed Ridge	
				DWG. NO.		DR	DATE
						KRK	10/27/2020
				MATERIAL		APP	DATE
01	6/28/2022	Added Final Product Design Disclaimer	KRK				
REV. NO.	DATE	DESCRIPTION OF REVISION	BY	APP	SH. SIZE	A	SCALE
							X:X




Convex



Concave



Order #

Concave: 

Convex: 

Material

Alum 24 ga 55% Al-Zn alloy coated steel with acrylic coating

Finish:

Color:

Trim Length:

Number of Pieces:



ATAS INTERNATIONAL, INC
 Allentown PA
 610-395-8445
 Mesa AZ
 480-558-7210

Note: * denotes color side.

Note: Trims shown as Standard, Job Specific Dimensions may alter Final Product Design.

REV. NO.	DATE	DESCRIPTION OF REVISION	BY	APP
01	6/28/2022	Added Final Product Design Disclaimer	KRK	

TITLE Radius Trim Order Sheet - Window Sill		
DWG. NO.	DR KRK	DATE 12/19/2019
MATERIAL	APP	DATE
SH. SIZE A	SCALE X:X	