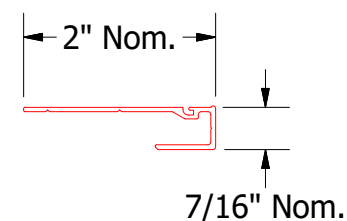
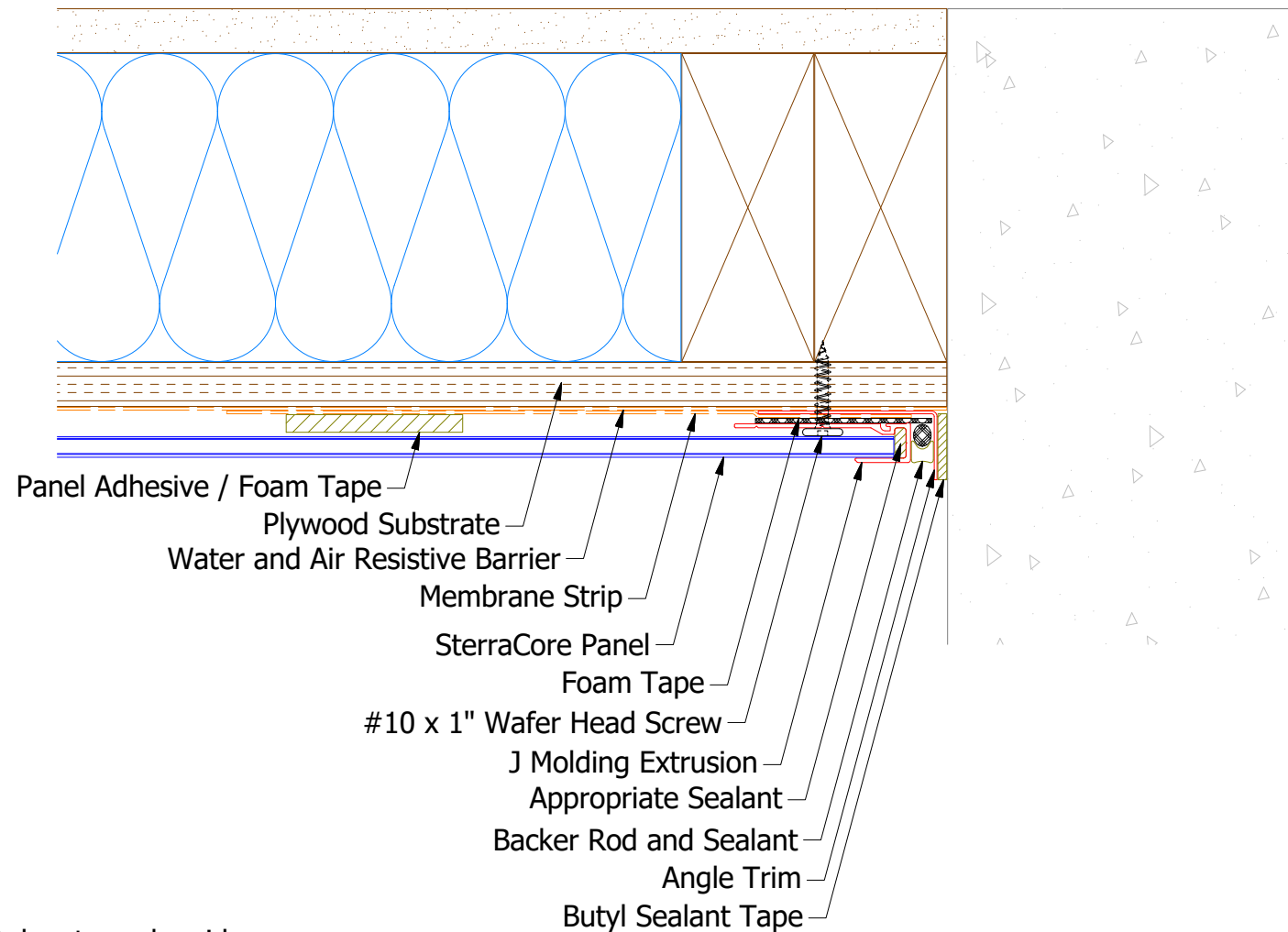
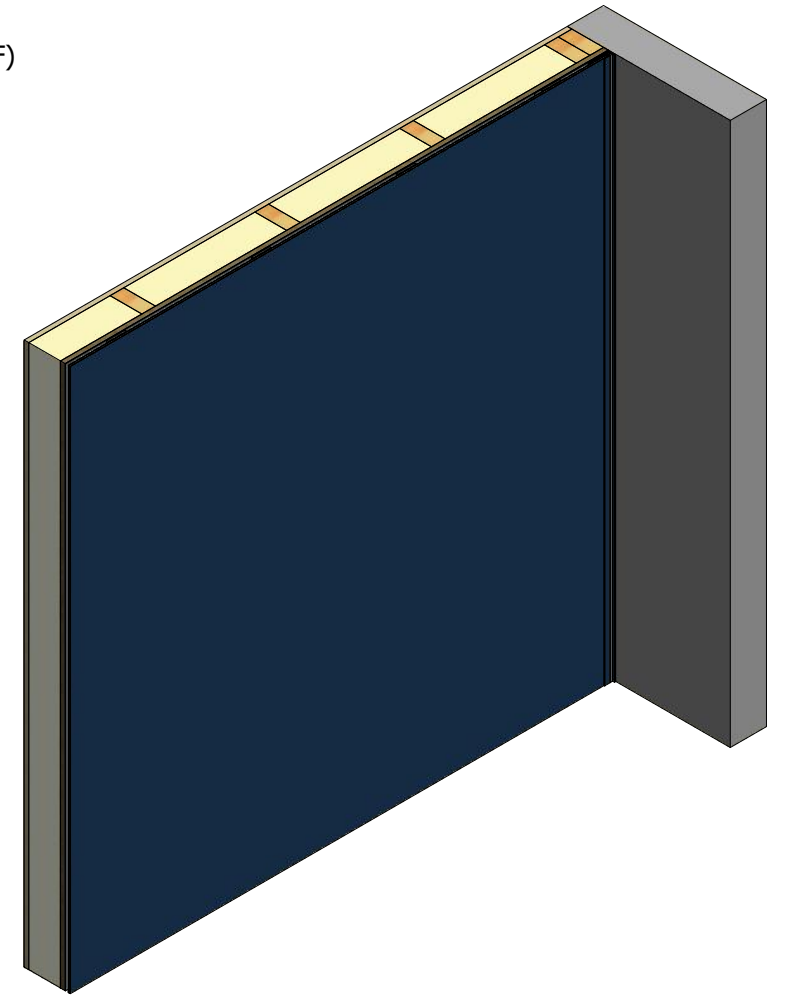
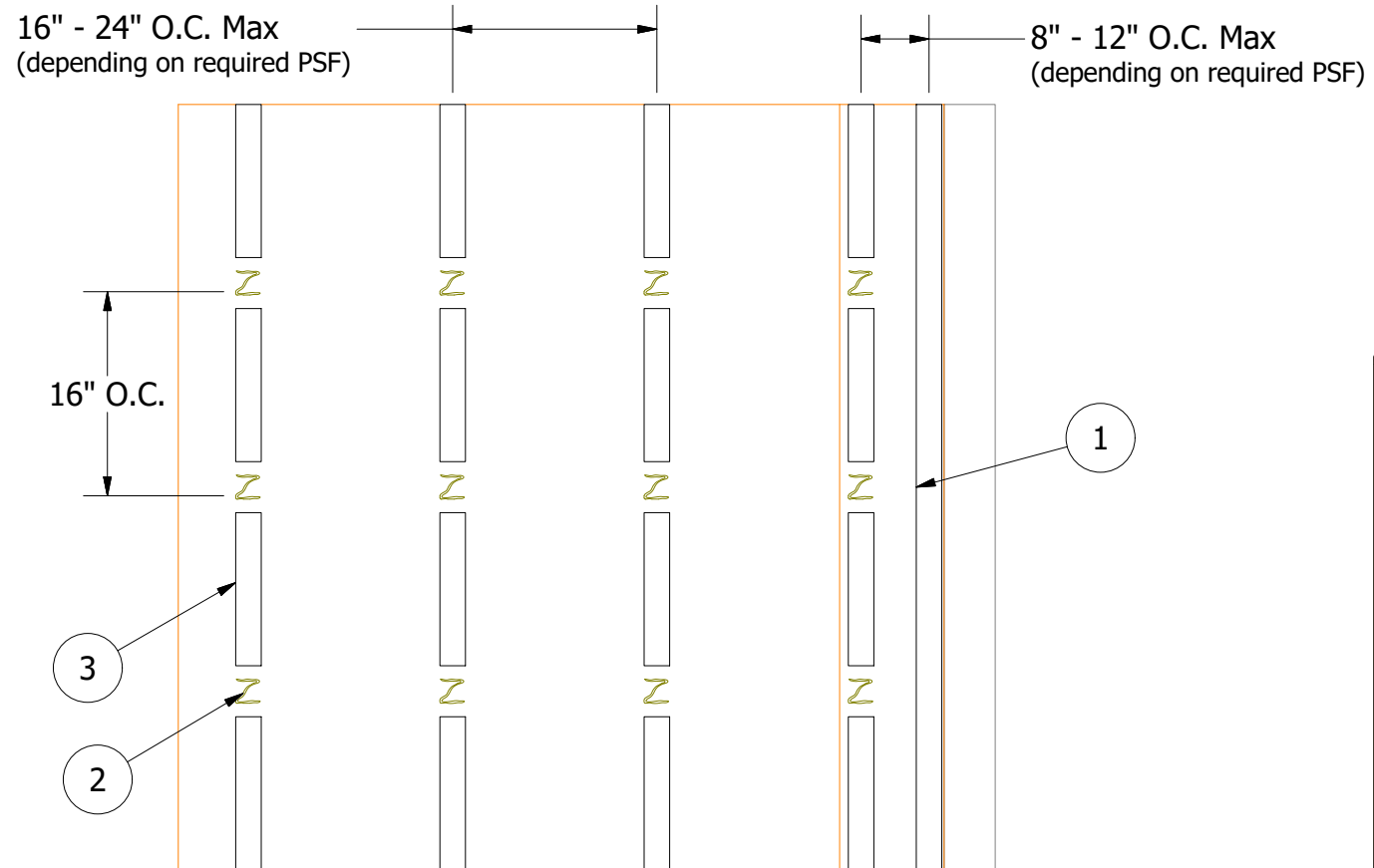
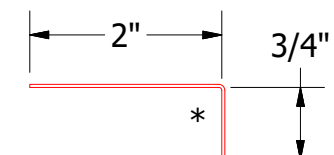


- (1) J Molding Extrusion installed on Continuous Foam Tape.
- (2) Panel Adhesive applied 16"-24" O.C. Horizontally and 16" O.C. Vertically.
- (3) Foam Tape installed Vertically in between Panel Adhesive.

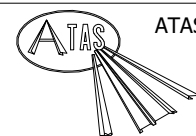


J Molding Extrusion



Angle Trim

## SterraCore Panel



ATAS INTERNATIONAL, INC  
Allentown PA  
610-395-8445  
Mesa AZ  
480-558-7210

TITLE			
SterraCore Starting Endwall Detail			
DWG. NO.	DR	KRK	DATE
	APP		DATE
MATERIAL	SH. SIZE	B	SCALE
			X:X

Note: \* denotes color side.