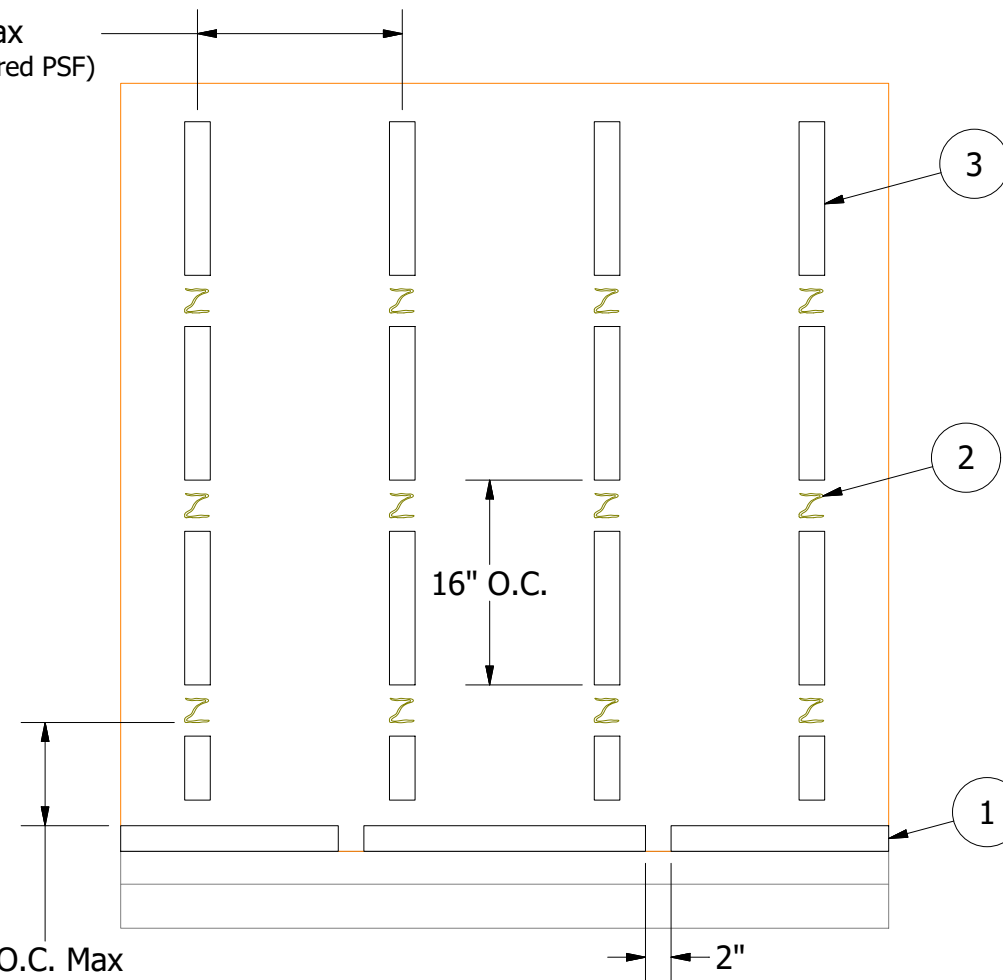


16" - 24" O.C. Max  
(depending on required PSF)

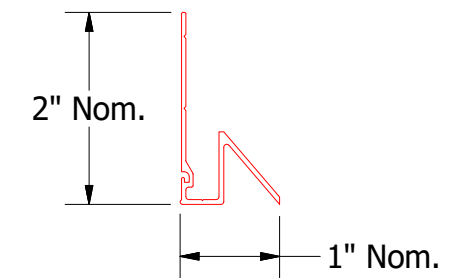
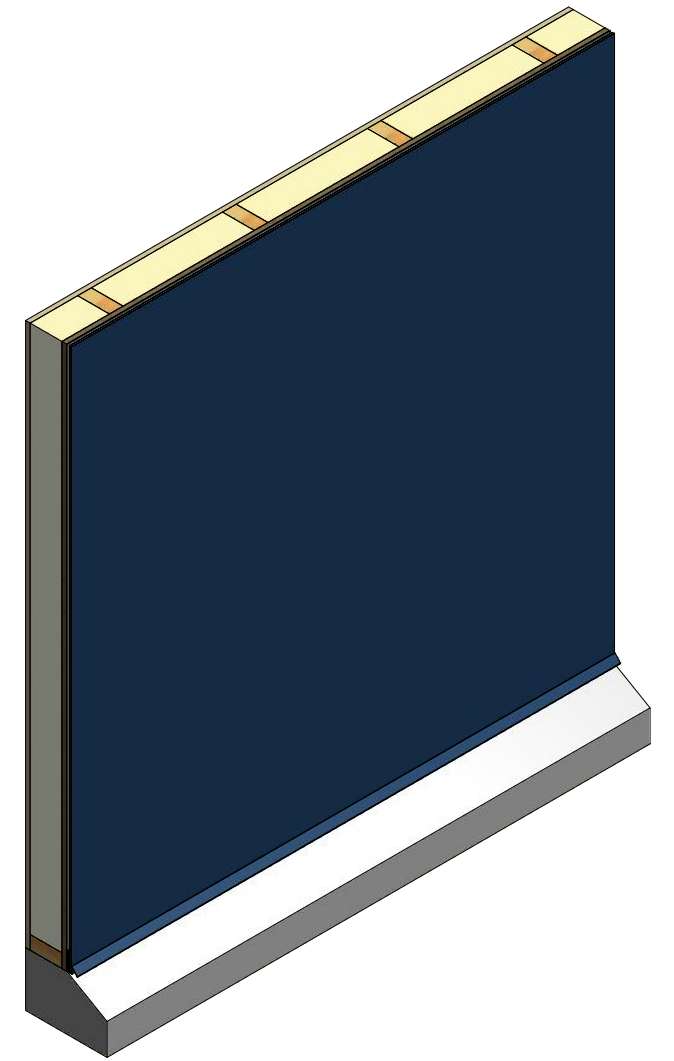
8" - 12" O.C. Max  
(depending on required PSF)



(1) Drip Cap Extrusion installed on Foam Tape. 2" min. gap at 24" O.C.

(2) Panel Adhesive applied 16"-24" O.C. Horizontally and 16" O.C. Vertically.

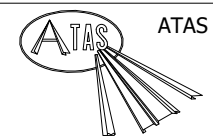
(3) Foam Tape installed Vertically in between Panel Adhesive.



Drip Cap Extrusion



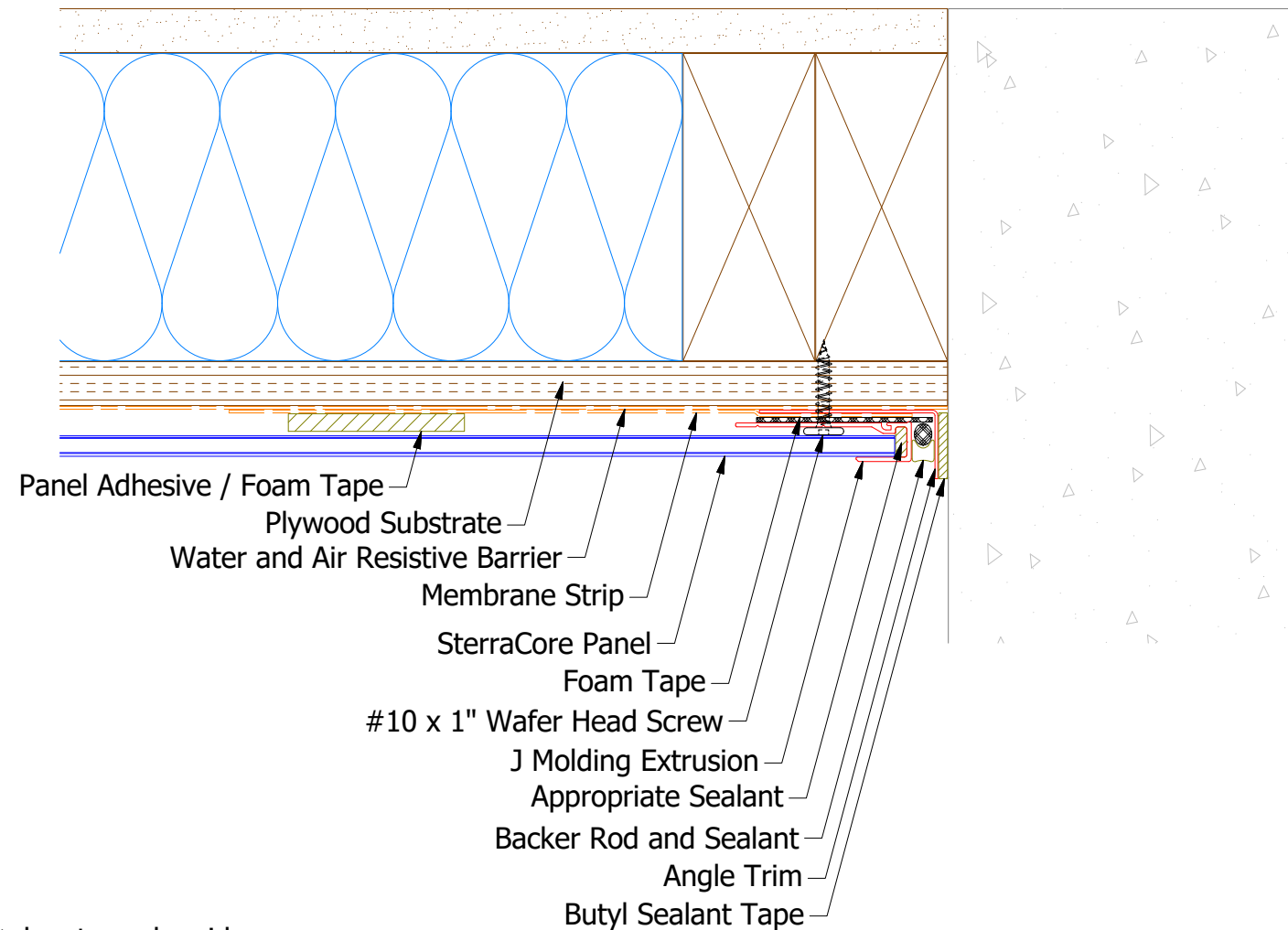
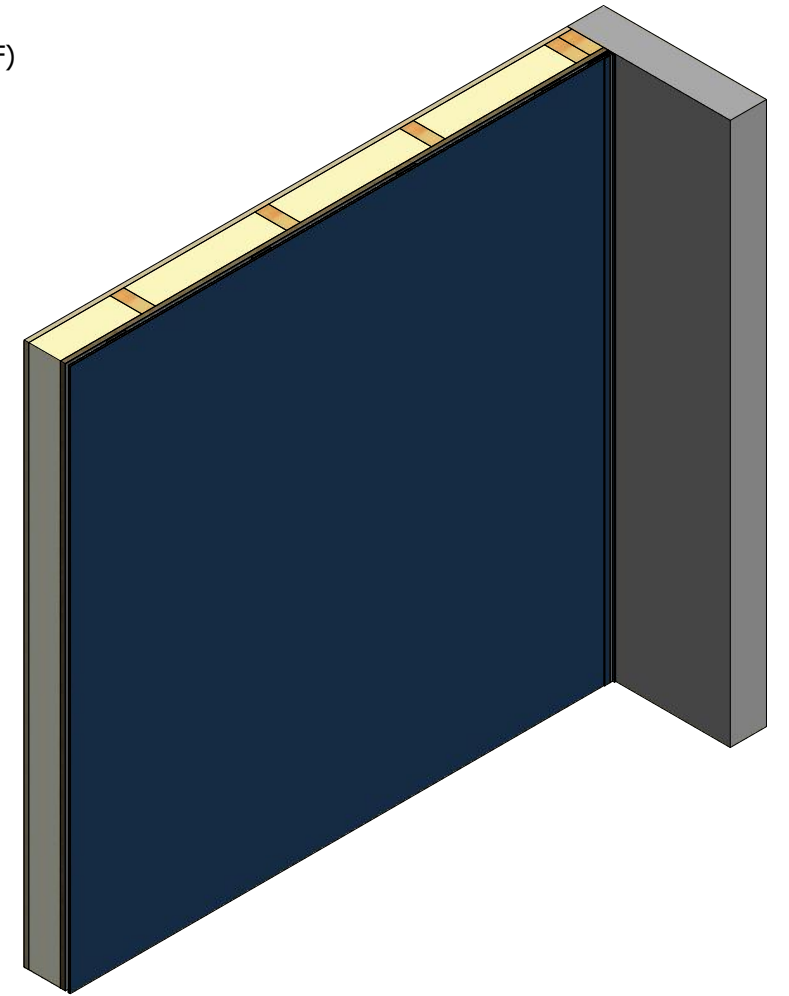
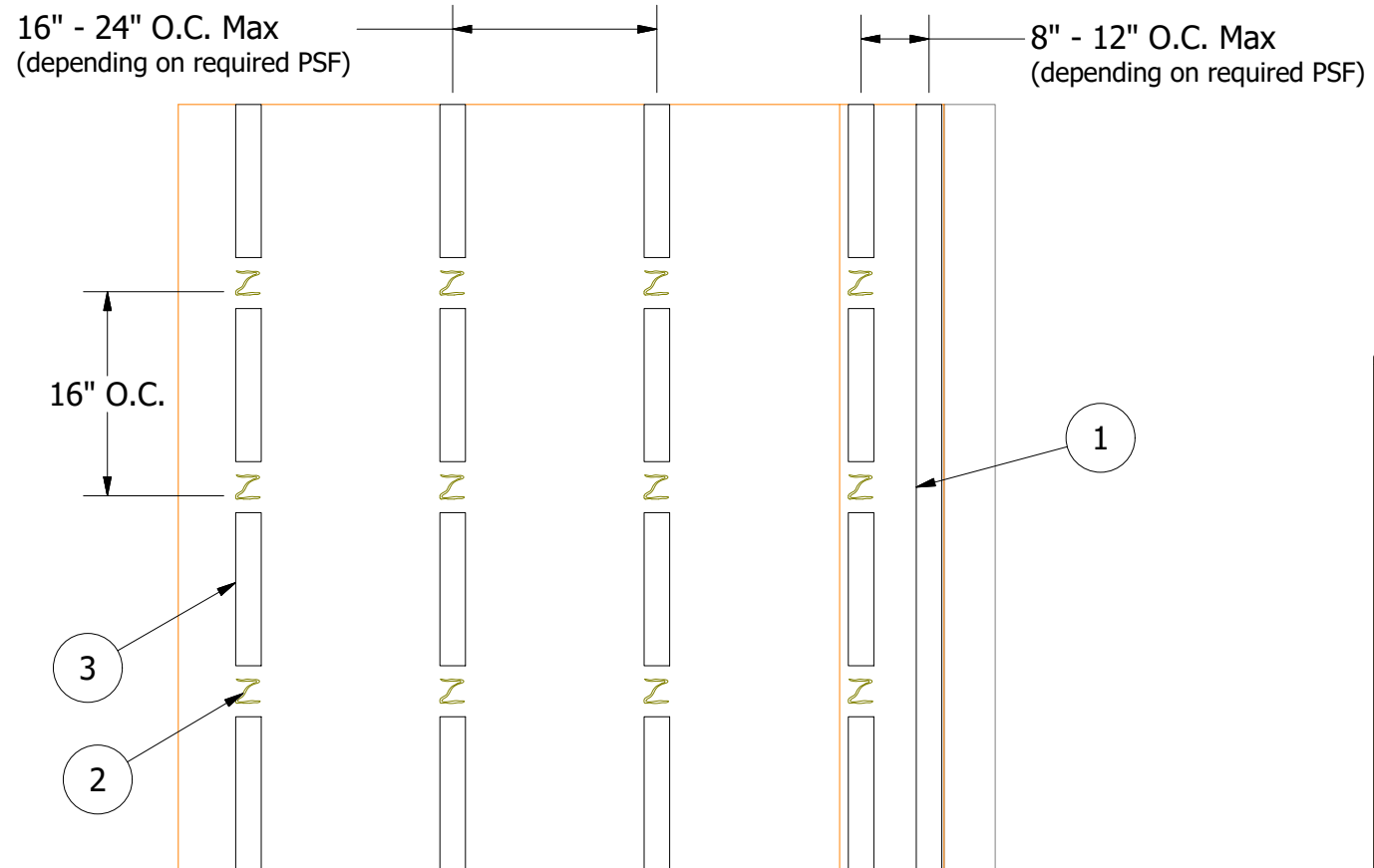
SterraCore Panel



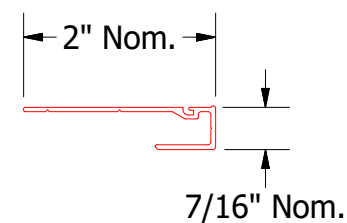
ATAS INTERNATIONAL, INC  
Allentown PA  
610-395-8445  
Mesa AZ  
480-558-7210

TITLE				
SterraCore Base Detail				
DWG. NO.		DR		DATE
		APP		DATE
MATERIAL		SH. SIZE		SCALE
		B		X:X
REV. NO.	DATE	DESCRIPTION OF REVISION		BY APP

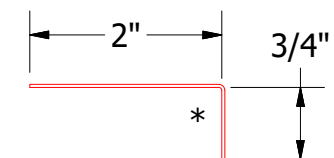
- (1) J Molding Extrusion installed on Continuous Foam Tape.
- (2) Panel Adhesive applied 16"-24" O.C. Horizontally and 16" O.C. Vertically.
- (3) Foam Tape installed Vertically in between Panel Adhesive.



Note: \* denotes color side.

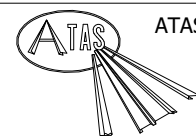


J Molding Extrusion



Angle Trim

## SterraCore Panel



ATAS INTERNATIONAL, INC  
Allentown PA  
610-395-8445  
Mesa AZ  
480-558-7210

TITLE			
SterraCore Starting Endwall Detail			
DWG. NO.	DR	KRK	DATE
	APP		DATE
MATERIAL	SH. SIZE	B	SCALE
			X:X

REV. NO.	DATE	DESCRIPTION OF REVISION	BY	APP

16" - 24" O.C. Max  
(depending on required PSF)

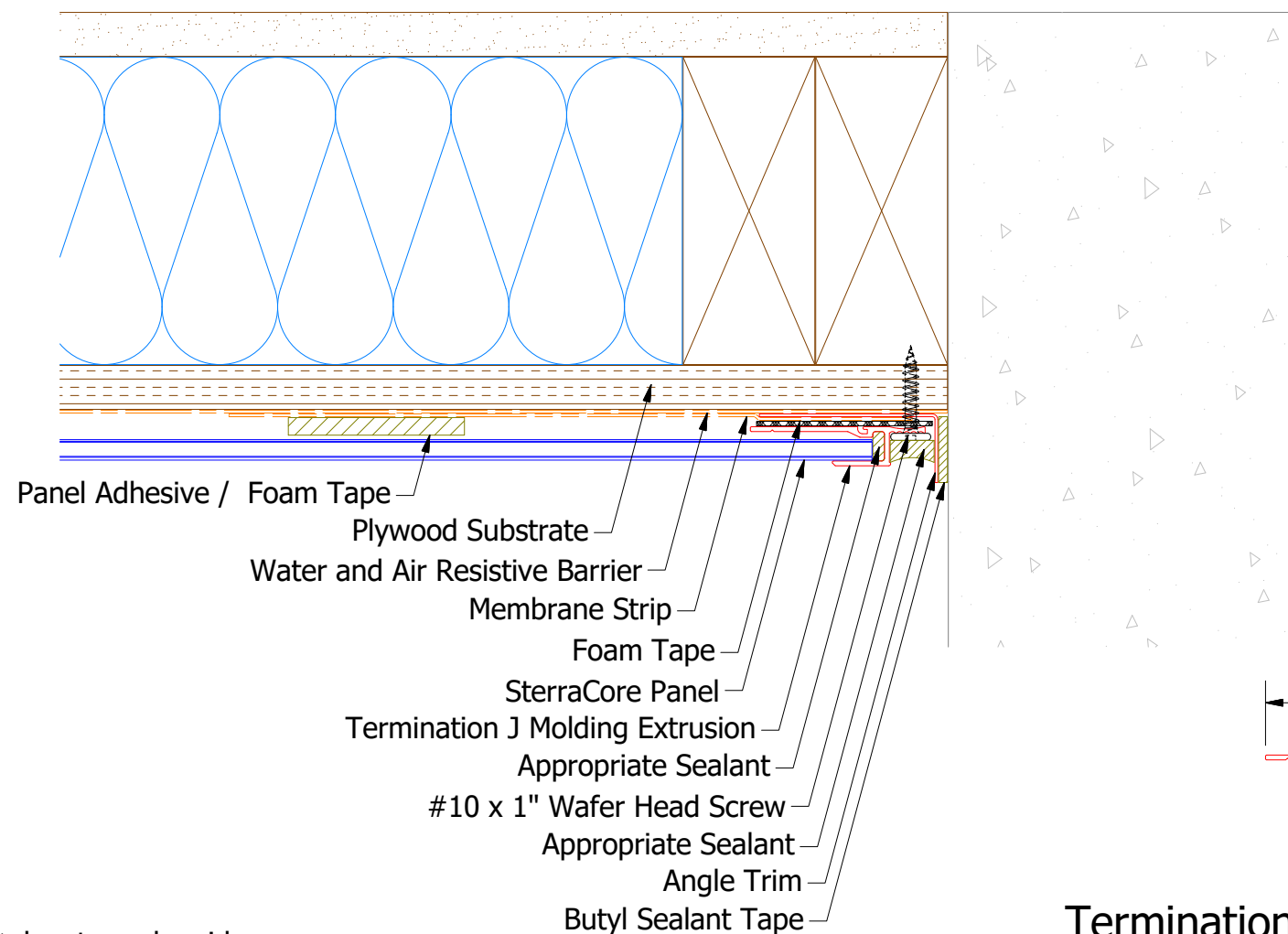
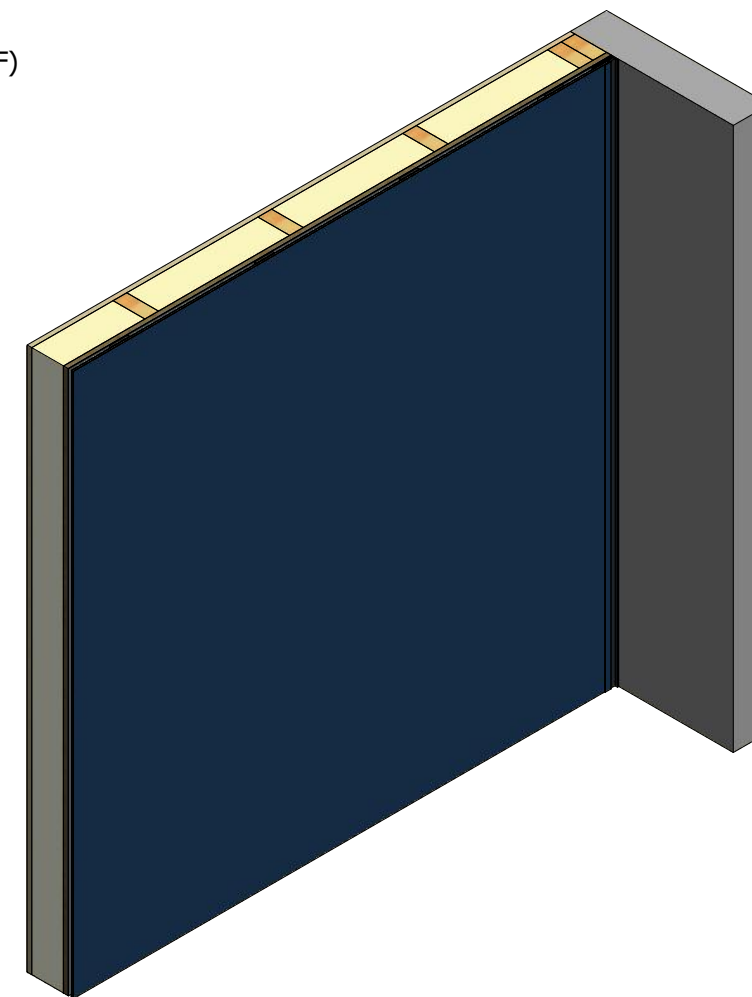
8" - 12" O.C. Max  
(depending on required PSF)

16" O.C.

1

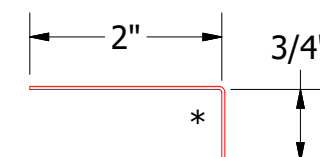
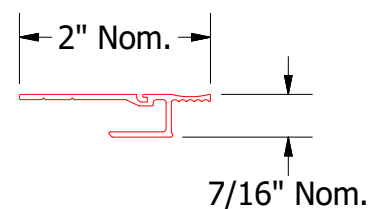
2

3



Note: \* denotes color side.

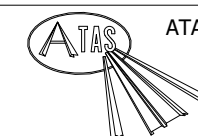
## Termination J Molding Extrusion



## Angle Trim

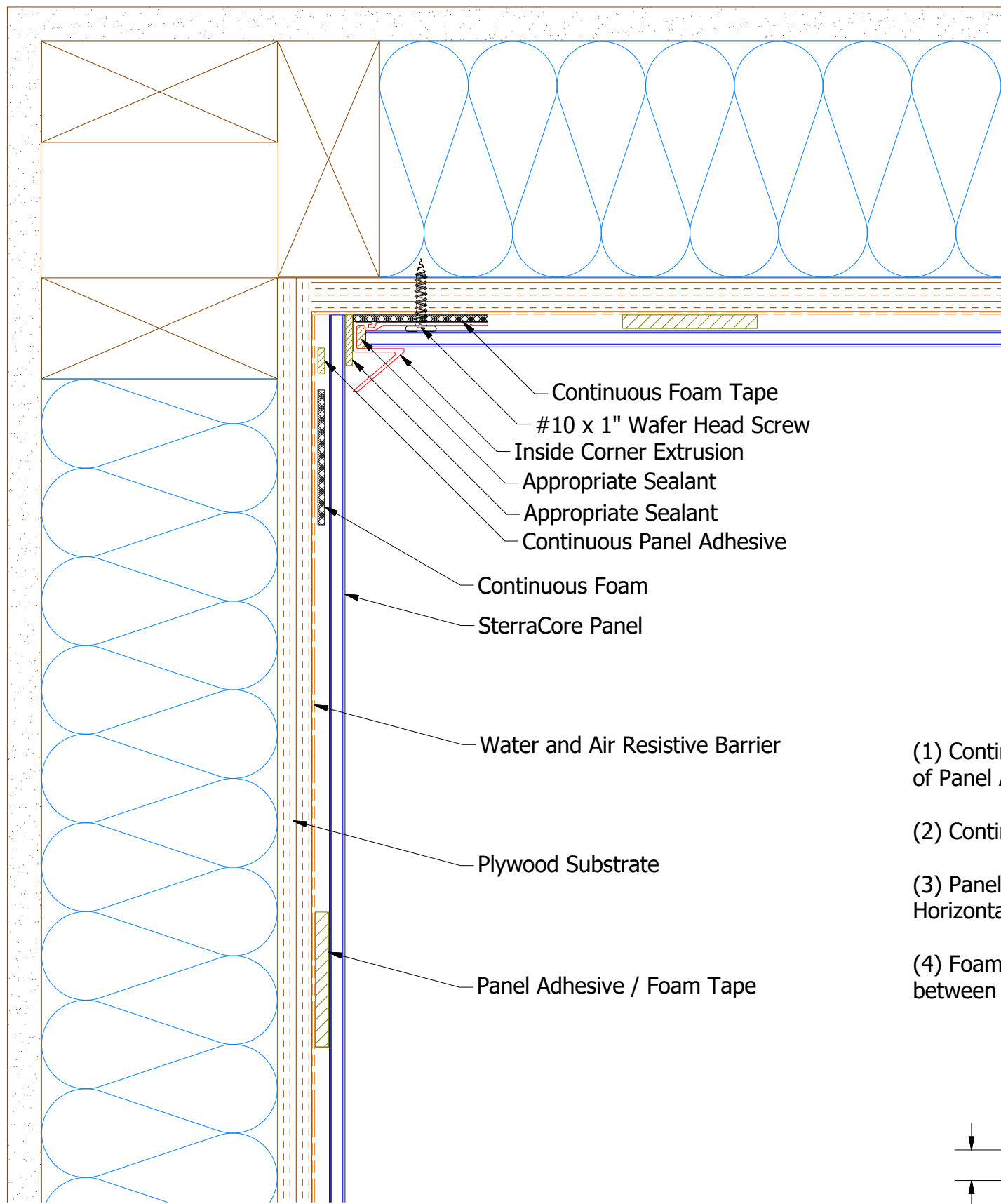
					TITLE <b>SterraCore Ending Endwall Detail</b>				
					DWG. NO.			DR <b>KRK</b>	DATE <b>4/4/2022</b>
								APP	DATE
					MATERIAL			SH. SIZE <b>B</b>	SCALE <b>X:X</b>
REV. NO.	DATE	DESCRIPTION OF REVISION	BY	APP					

## SterraCore Panel




**ATAS INTERNATIONAL, INC**  
 Allentown PA  
 610-395-8445  
 Mesa AZ  
 480-558-7210

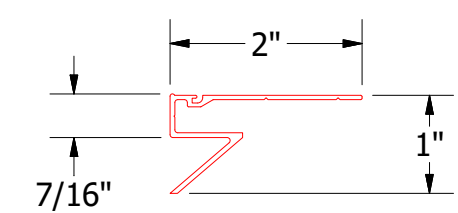
TITLE	SterraCore Ending Endwall Detail
-------	----------------------------------



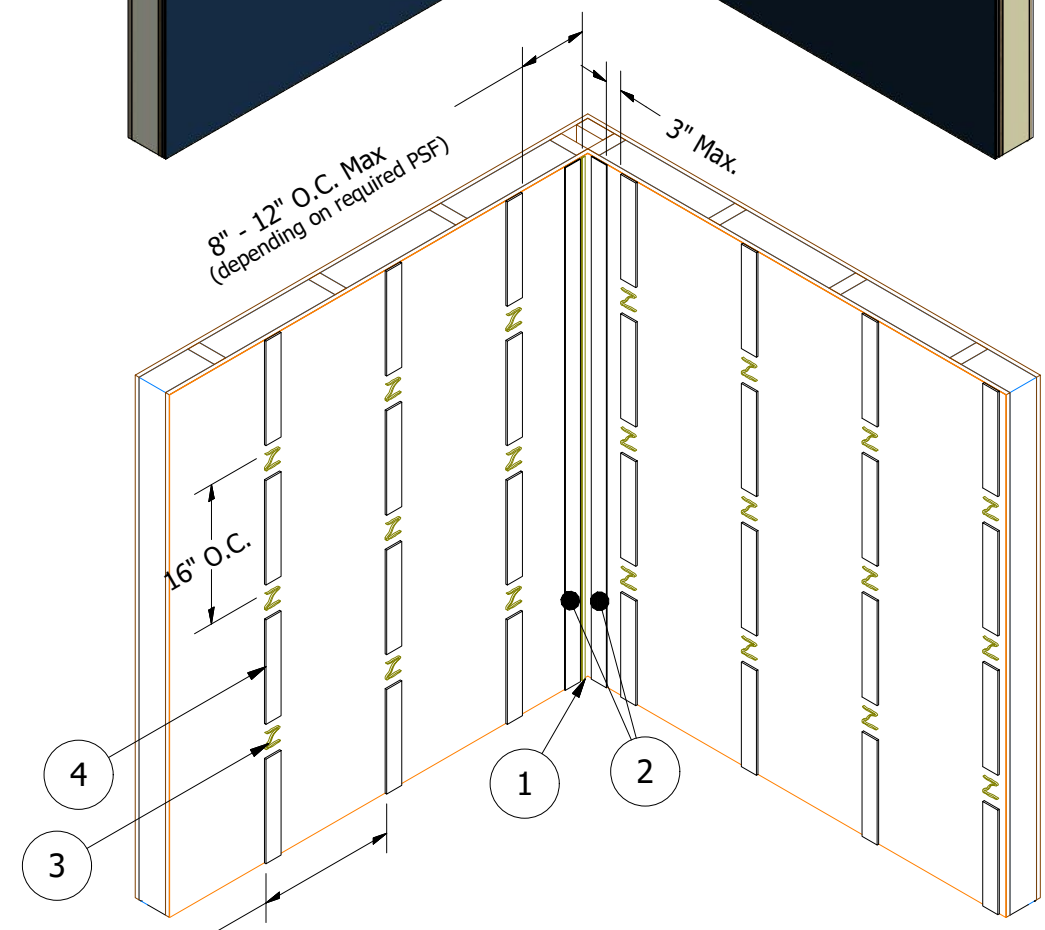
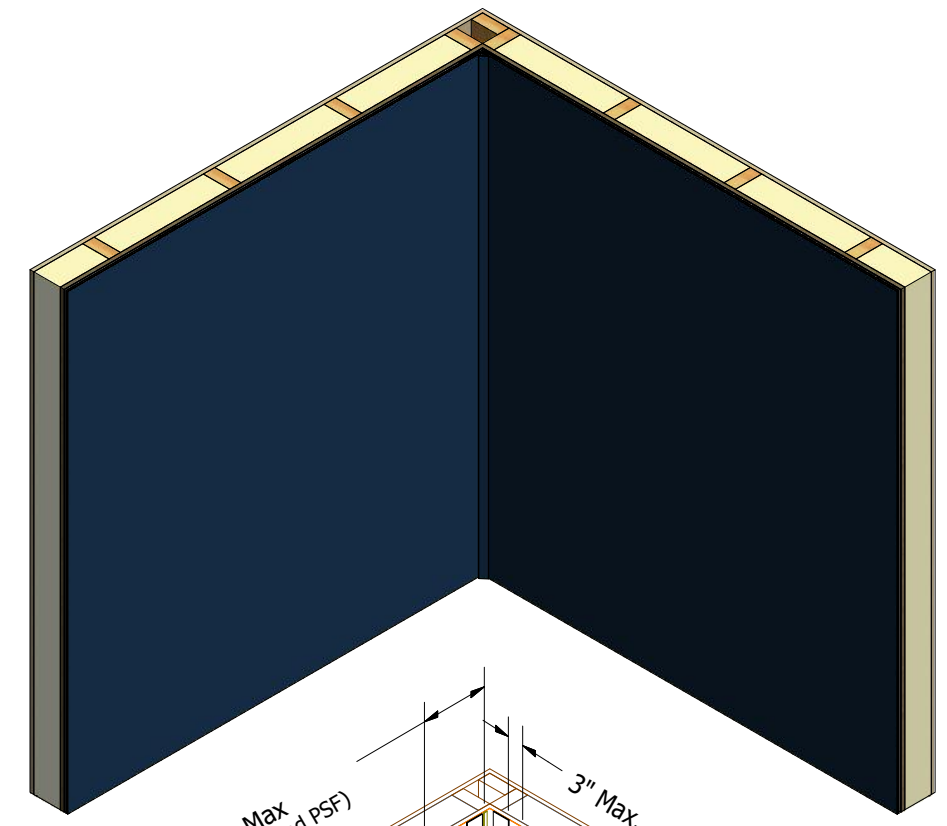
- Continuous Foam Tape
- #10 x 1" Wafer Head Screw
- Inside Corner Extrusion
- Appropriate Sealant
- Appropriate Sealant
- Continuous Panel Adhesive
- Continuous Foam
- SterraCore Panel
- Water and Air Resistive Barrier
- Plywood Substrate
- Panel Adhesive / Foam Tape

- (1) Continuous Bead (1/4" Min, 3/8" Max) of Panel Adhesive.
- (2) Continuous Foam Tape
- (3) Panel Adhesive applied 16"-24" O.C. Horizontally and 16" O.C. Vertically.
- (4) Foam Tape Installed Vertically in between Panel Adhesive.


SterraCore Panel



Inside Corner Extrusion



16" - 24" O.C. Max  
(depending on required PSF)

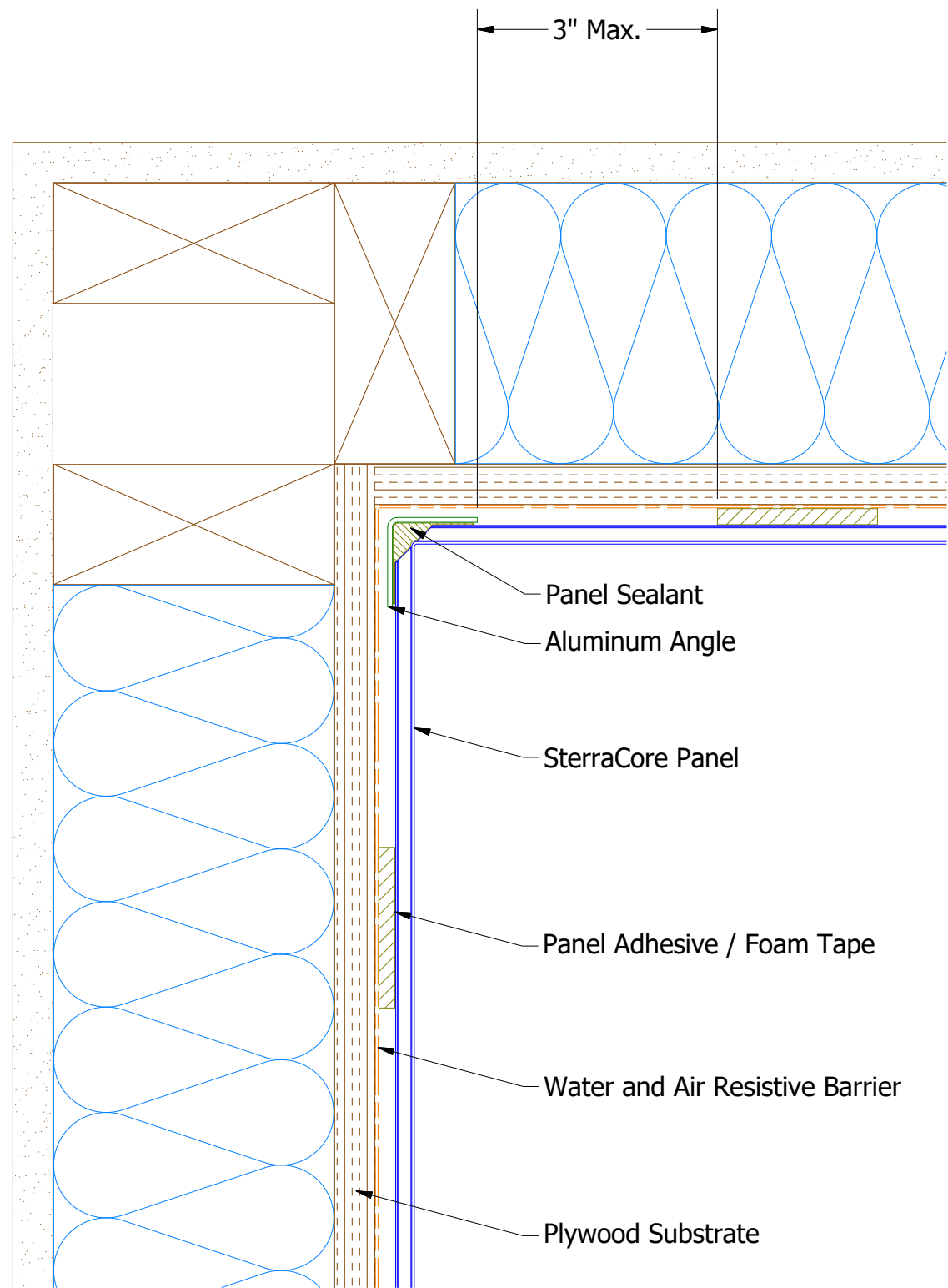


ATAS INTERNATIONAL, INC  
Allentown PA  
610-395-8445  
Mesa AZ  
480-558-7210

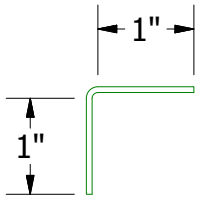
TITLE  
SterraCore Extrusion Inside Corner Detail

DWG. NO.	DR	KRK	DATE	4/7/2022
	APP		DATE	
MATERIAL	SH. SIZE	B	SCALE	X:X

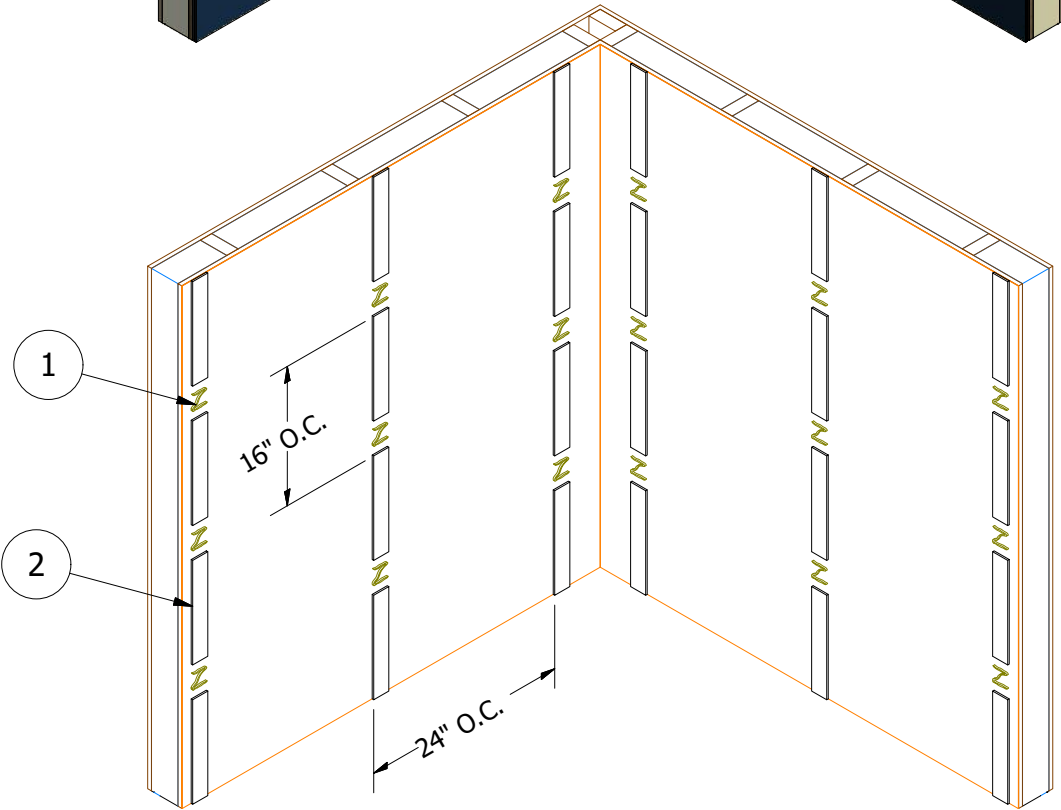
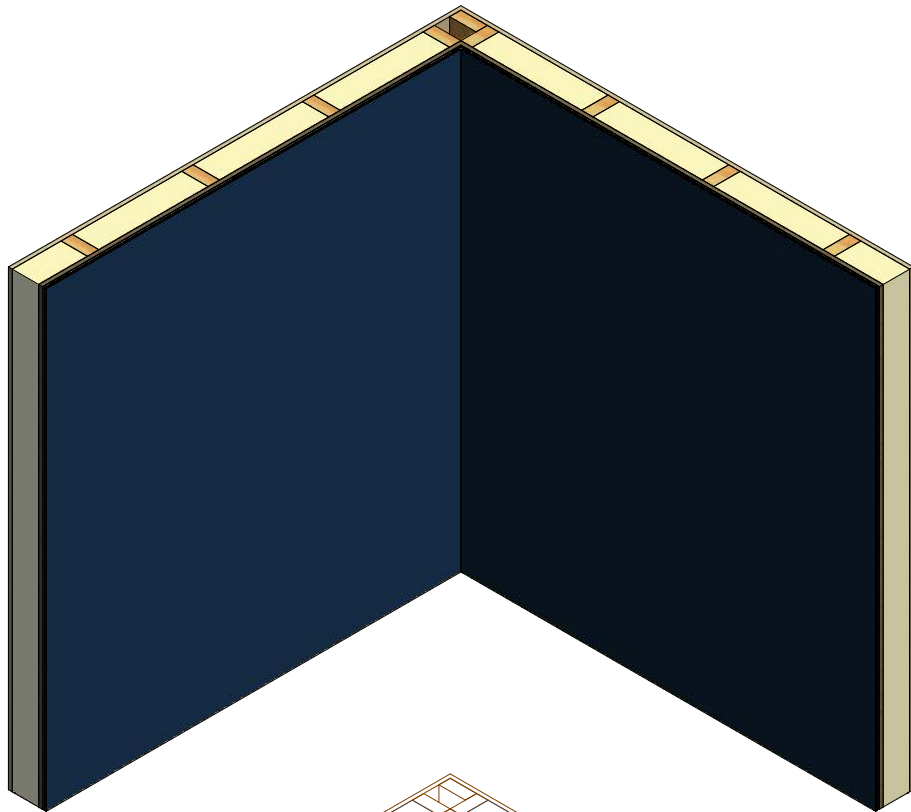
REV. NO.	DATE	DESCRIPTION OF REVISION	BY	APP



SterraCore Panel




Aluminum Angle



(1) Panel Adhesive applied 24" O.C. Horizontally and 16" O.C. Vertically.

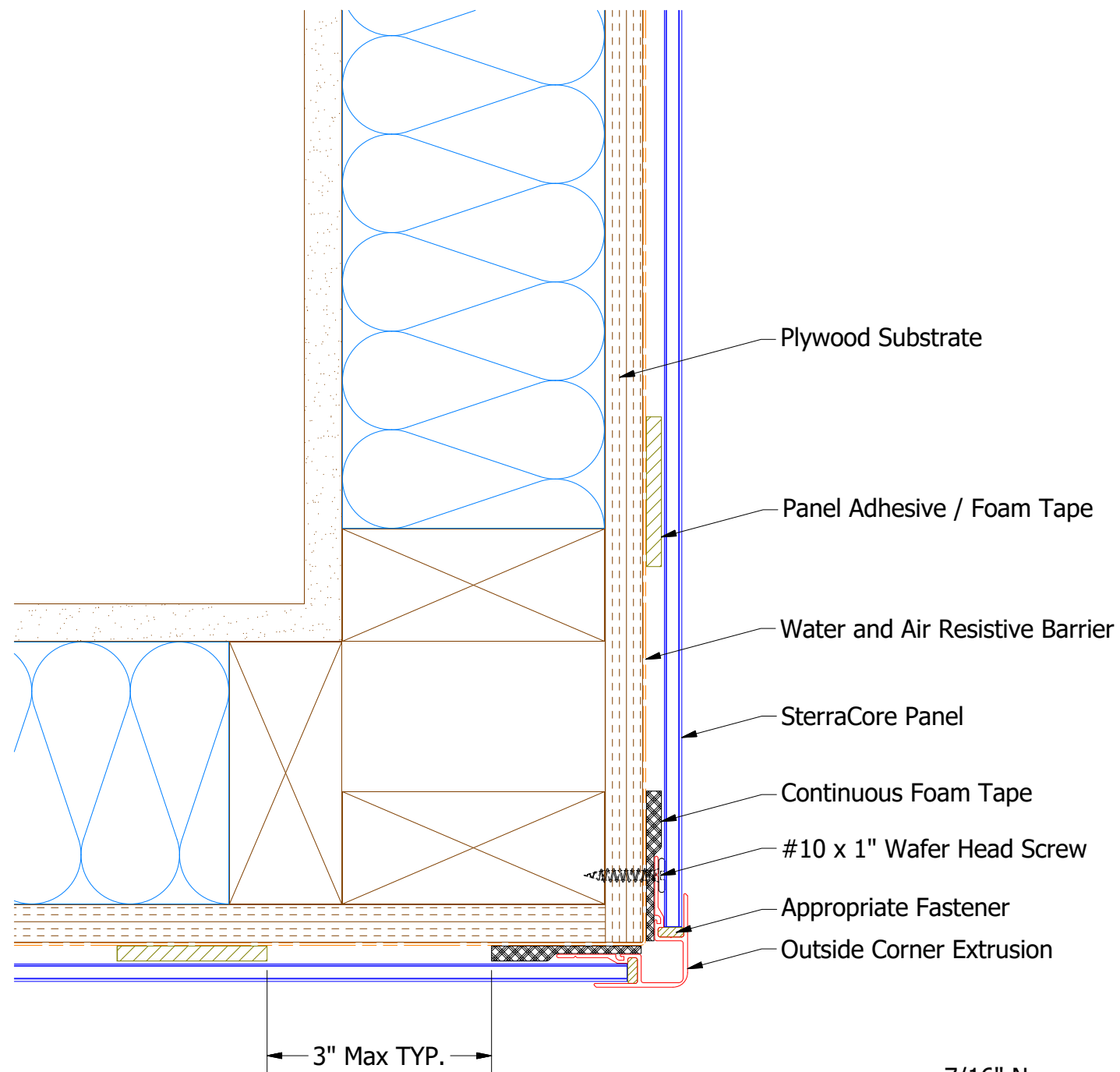
(2) Foam Tape installed Vertically in between Panel Adhesive.



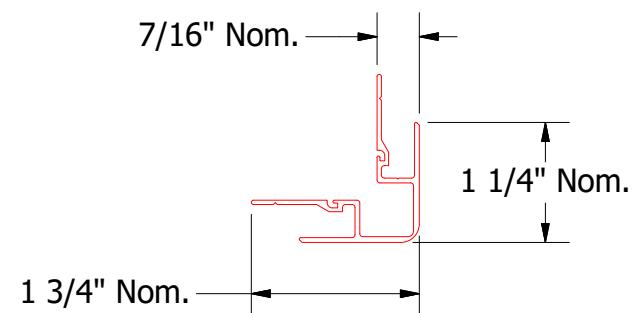
ATAS INTERNATIONAL, INC  
Allentown PA  
610-395-8445  
Mesa AZ  
480-558-7210

TITLE SterraCore Routed Inside Corner Detail			
DWG. NO.		DR KRK	DATE 4/6/2022
APP		DATE	
MATERIAL		SH. SIZE B	SCALE X:X

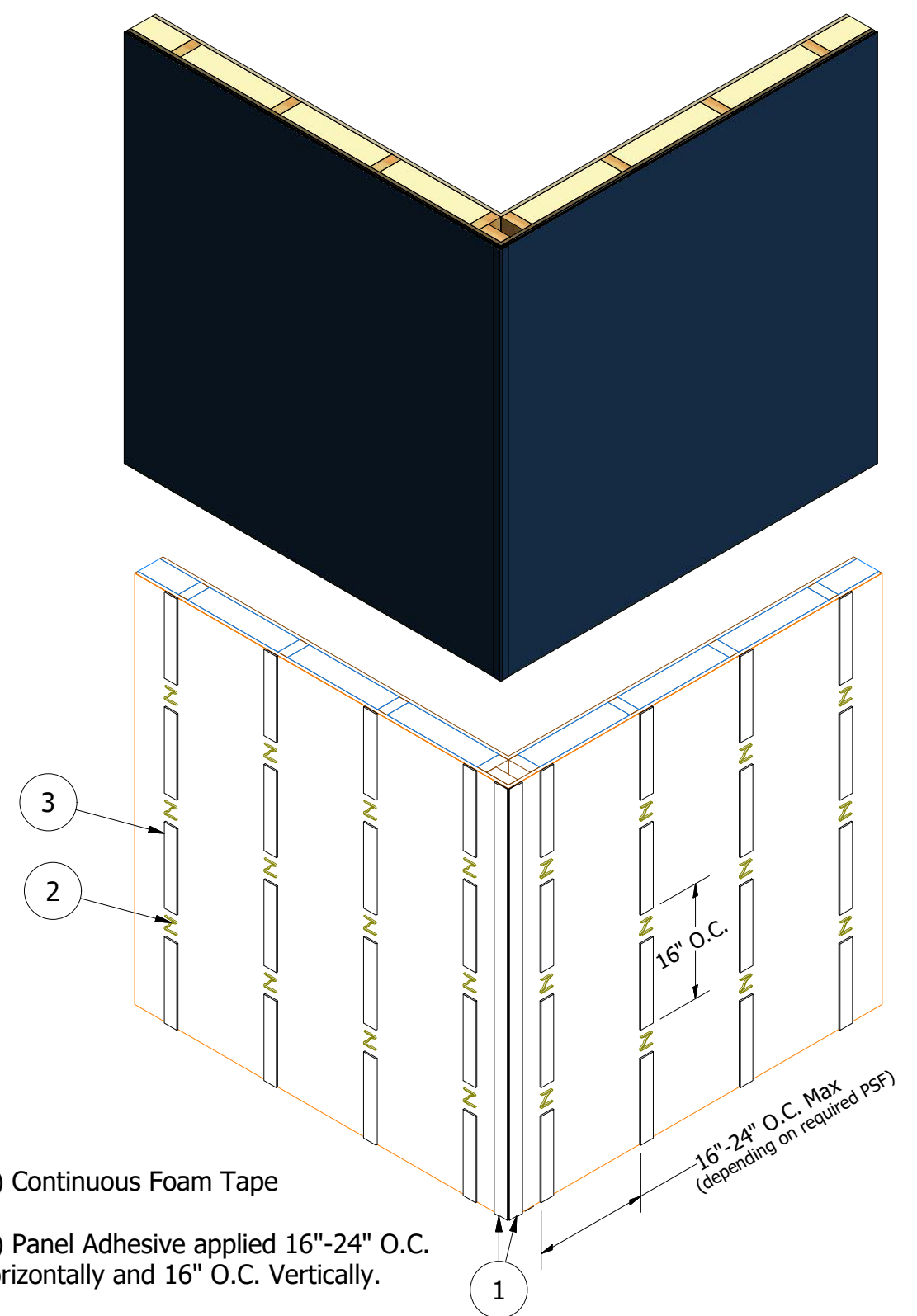
REV. NO.	DATE	DESCRIPTION OF REVISION	BY	APP



SterraCore Panel



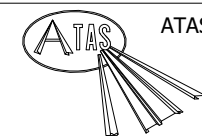
Outside Corner Extrusion



(1) Continuous Foam Tape

(2) Panel Adhesive applied 16"-24" O.C. Horizontally and 16" O.C. Vertically.

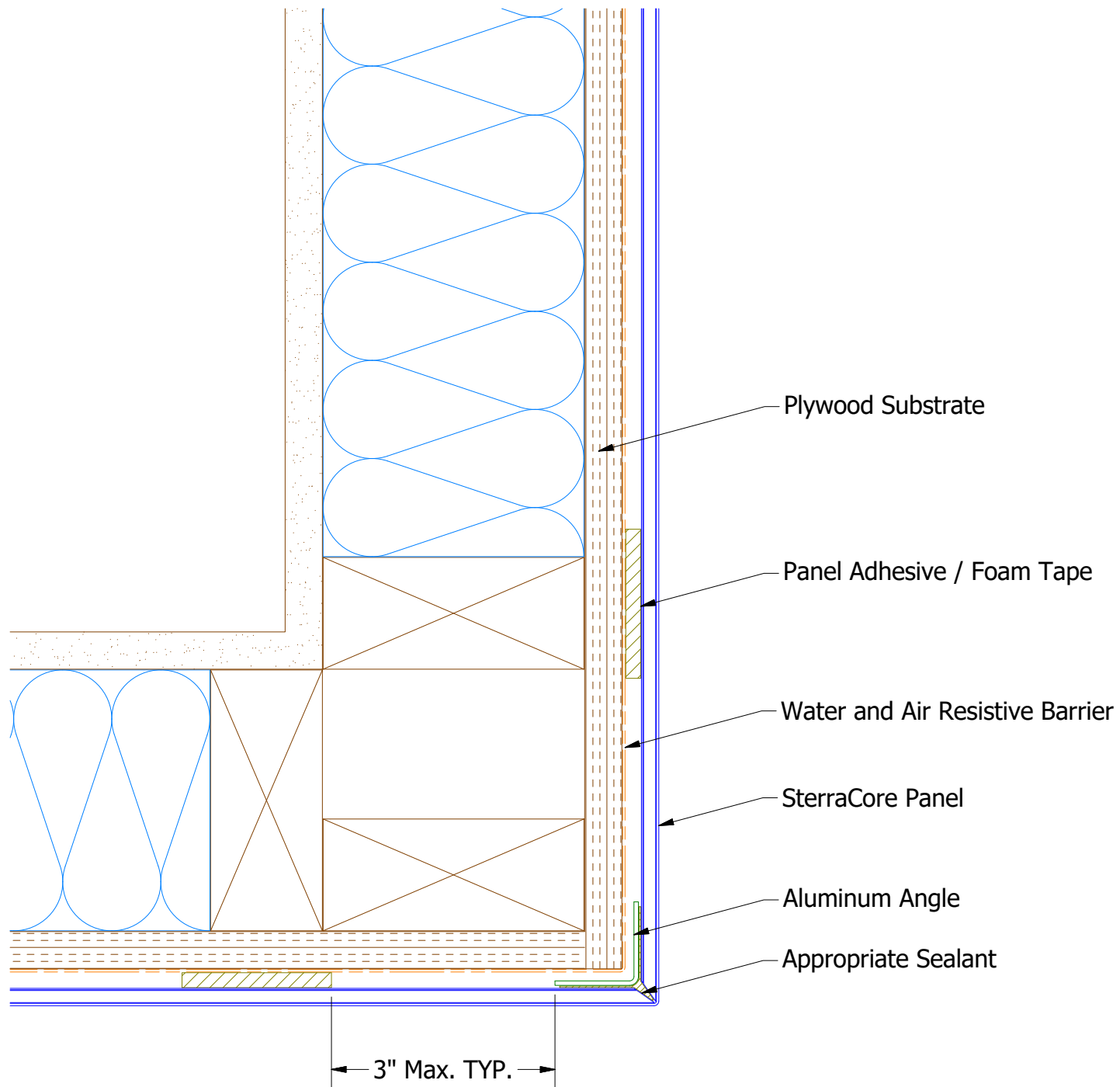
(3) Foam Tape Installed Vertically in between Panel Adhesive.




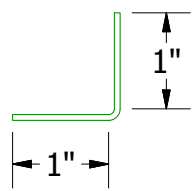
ATAS INTERNATIONAL, INC  
Allentown PA  
610-395-8445  
Mesa AZ  
480-558-7210

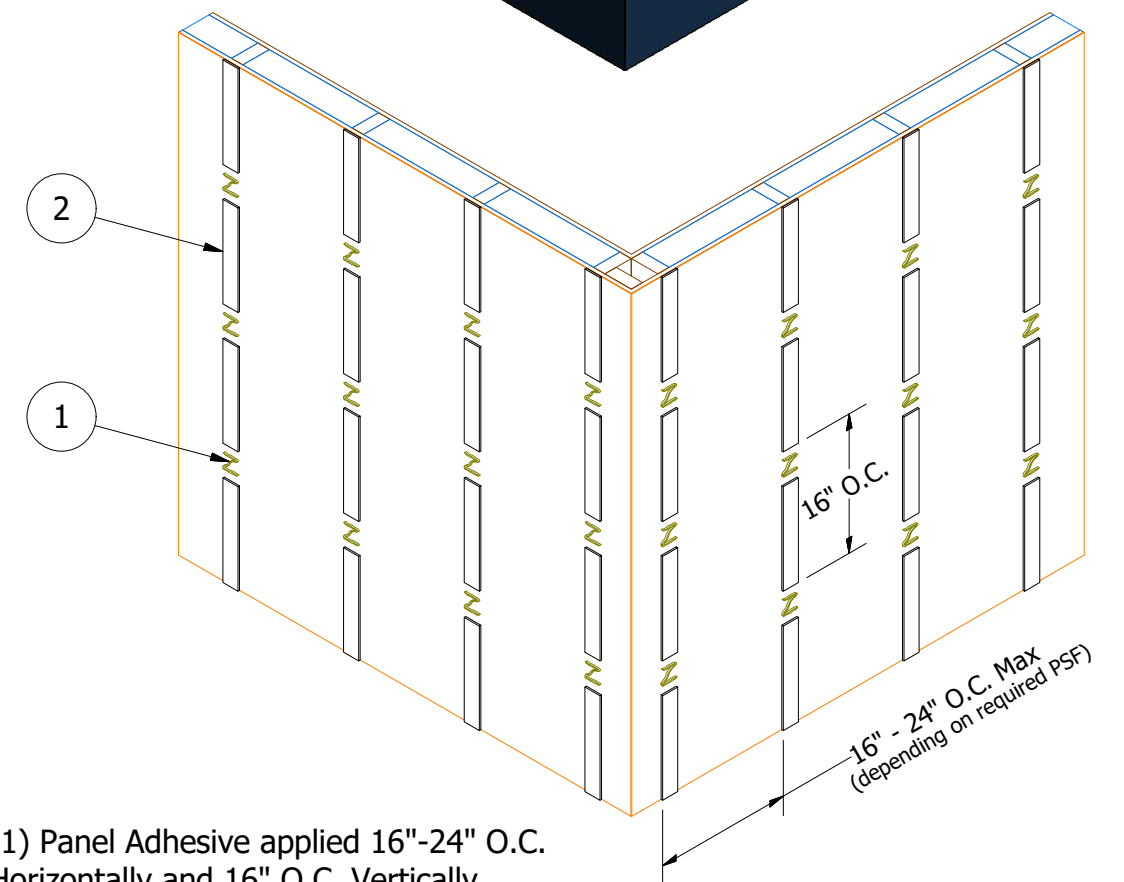
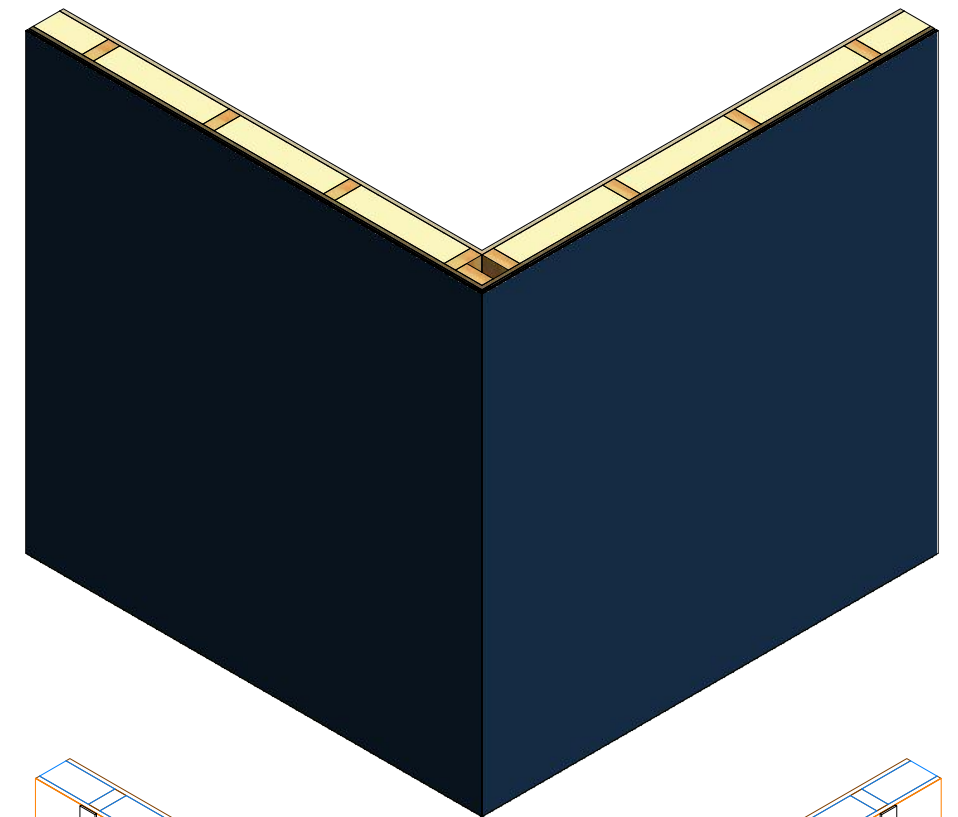
TITLE			
SterraCore Extrusion Outside Corner Detail			
DWG. NO.	DR	KRK	DATE 4/8/2022
MATERIAL	APP		DATE
SH. SIZE	B	SCALE	X:X

REV. NO.	DATE	DESCRIPTION OF REVISION	BY	APP



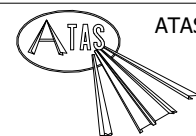
  
SterraCore Panel

  
Aluminum Angle



(1) Panel Adhesive applied 16"-24" O.C. Horizontally and 16" O.C. Vertically.

(2) Foam Tape Installed Vertically in between Panel Adhesive.

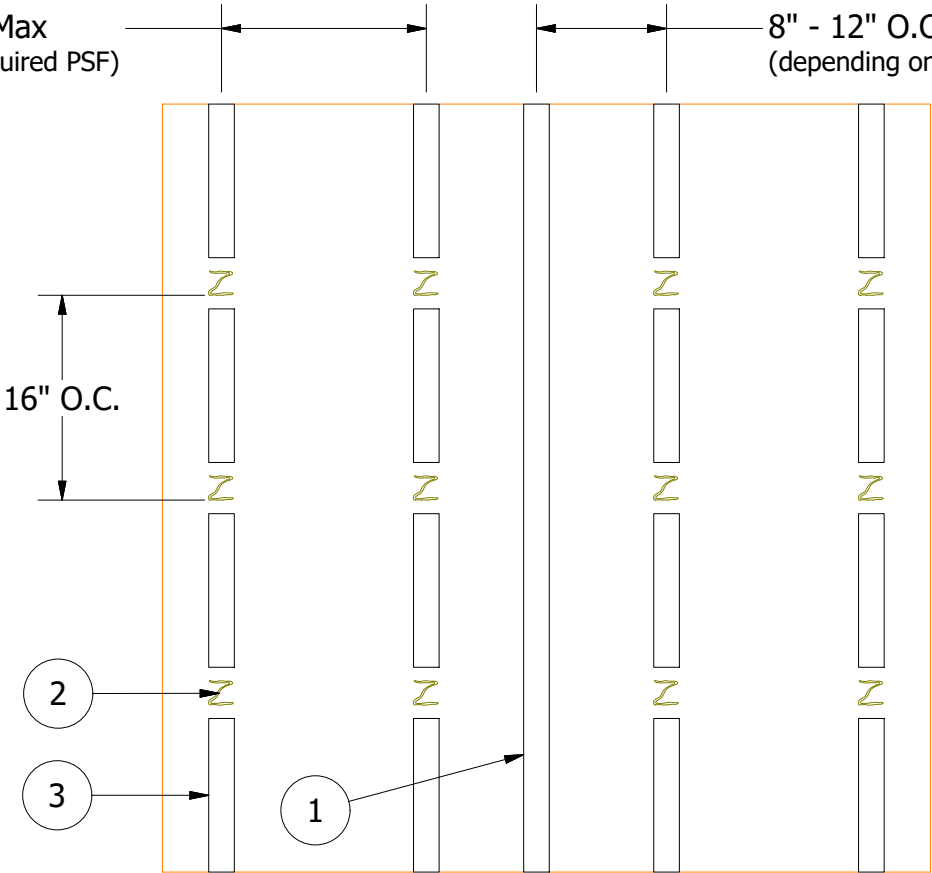


ATAS INTERNATIONAL, INC  
Allentown PA  
610-395-8445  
Mesa AZ  
480-558-7210

TITLE				
SterraCore Routed Outside Corner Detail				
DWG. NO.			DR	DATE
			KRK	4/8/2022
MATERIAL			APP	DATE
REV. NO.	DATE	DESCRIPTION OF REVISION	BY	APP

16" - 24" O.C. Max  
(depending on required PSF)

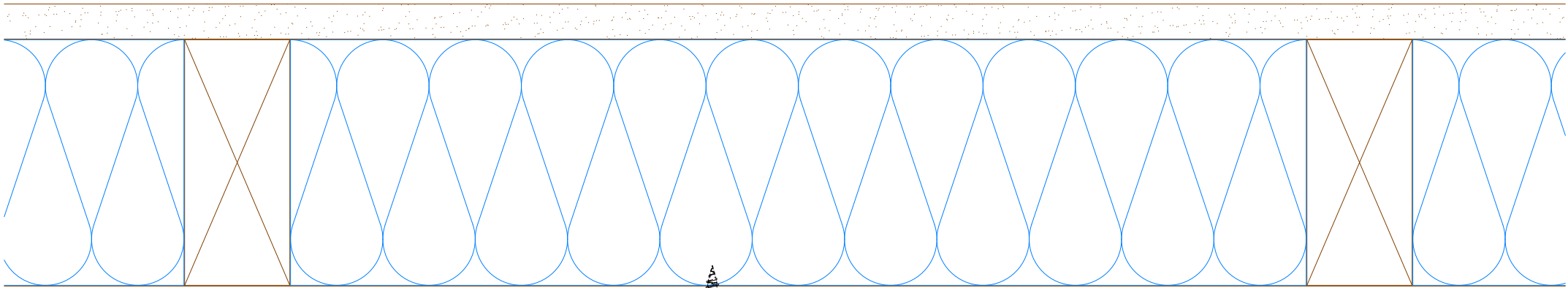
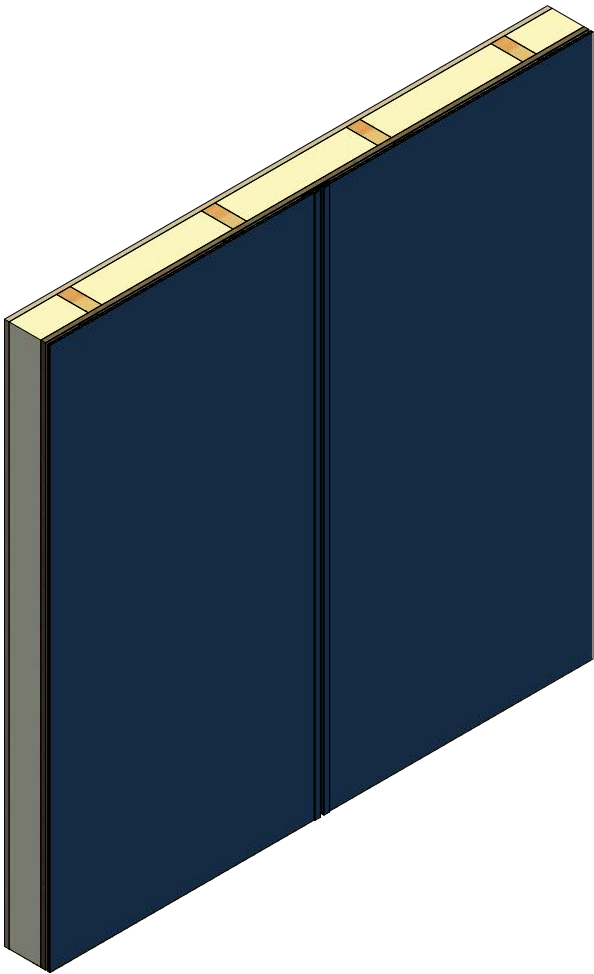
8" - 12" O.C. Max  
(depending on required PSF)



(1) Reveal H Molding Extrusion installed on Vertical Foam Tape.

(2) Panel Adhesive applied 16"-24" O.C. Horizontally and 16" O.C. Vertically.

(3) Foam Tape installed Vertically in between Panel Adhesive.



Panel Adhesive / Foam Tape

Plywood Substrate

Water and Air Resistive Barrier

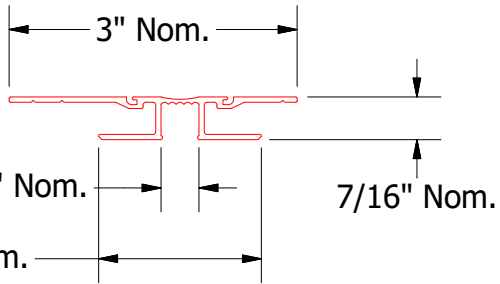
SterraCore Panel

#10 x 1" Wafer Head Screw

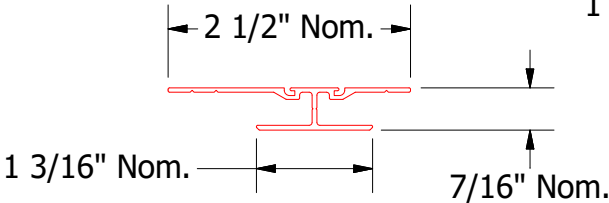
Foam Tape

Appropriate Sealant

Reveal H Molding Extrusion



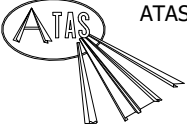
Reveal H Molding Extrusion



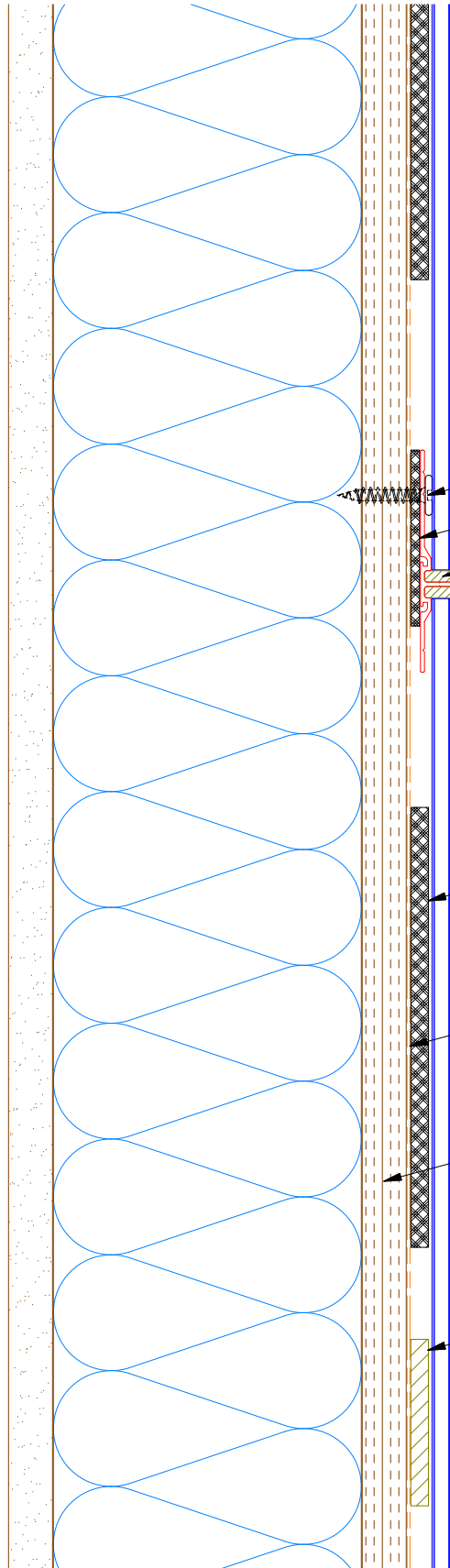
H Molding Extrusion



SterraCore Panel

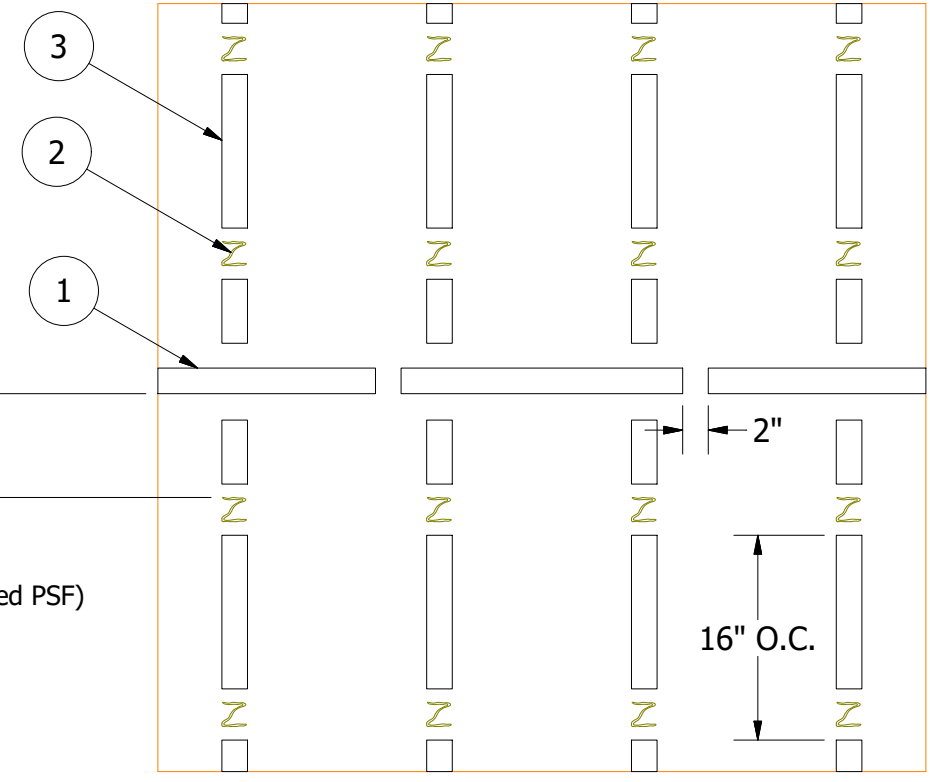
 ATAS INTERNATIONAL, INC Allentown PA 610-395-8445 Mesa AZ 480-558-7210			
TITLE SterraCore Horizontal Transition Detail			
DWG. NO.	DR	KRK	DATE 4/12/2022
MATERIAL	APP		DATE
SH. SIZE	B	SCALE	X:X

REV. NO.	DATE	DESCRIPTION OF REVISION	BY	APP



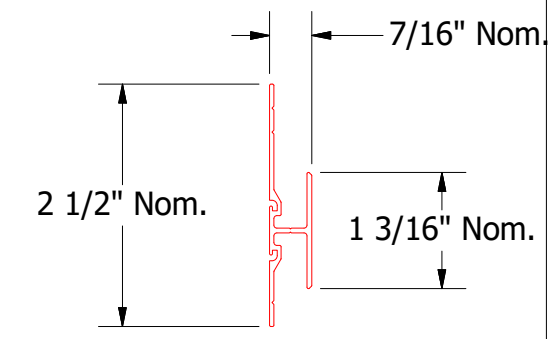
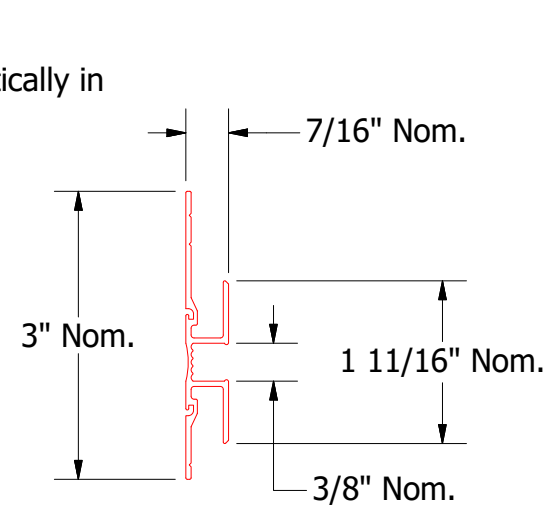
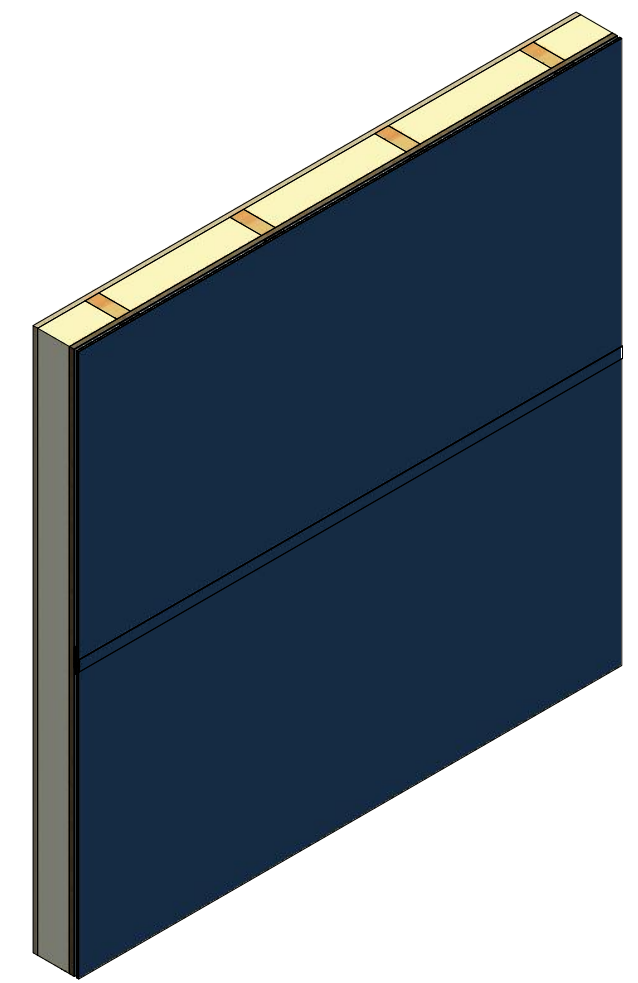
- #10 x 1" Wafer Head Screw
- Foam Tape
- Appropriate Sealant
- H Molding Extrusion
- SterraCore Panel
- Foam Tape
- Water and Air Resistive Barrier
- Plywood Substrate
- Panel Adhesive

16" - 24" O.C. Max  
(depending on required PSF)



8" - 12" O.C. Max  
(depending on required PSF)

- (1) H Molding Extrusion installed on Horizontal Foam Tape 2" min. gap at 24" O.C.
- (2) Panel Adhesive applied 16"-24" O.C. Horizontally and 16" O.C. Vertically.
- (3) Foam Tape installed Vertically in between Panel Adhesive.



H Molding Extrusion



SterraCore Panel

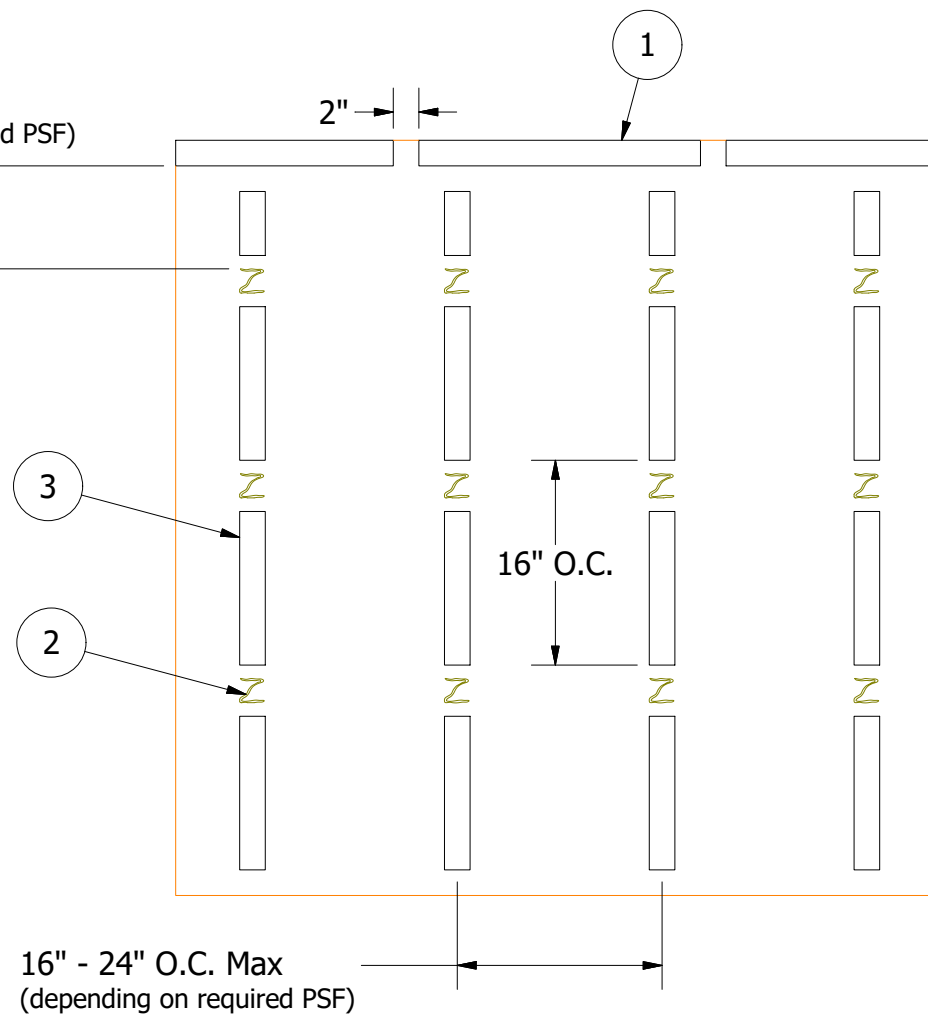
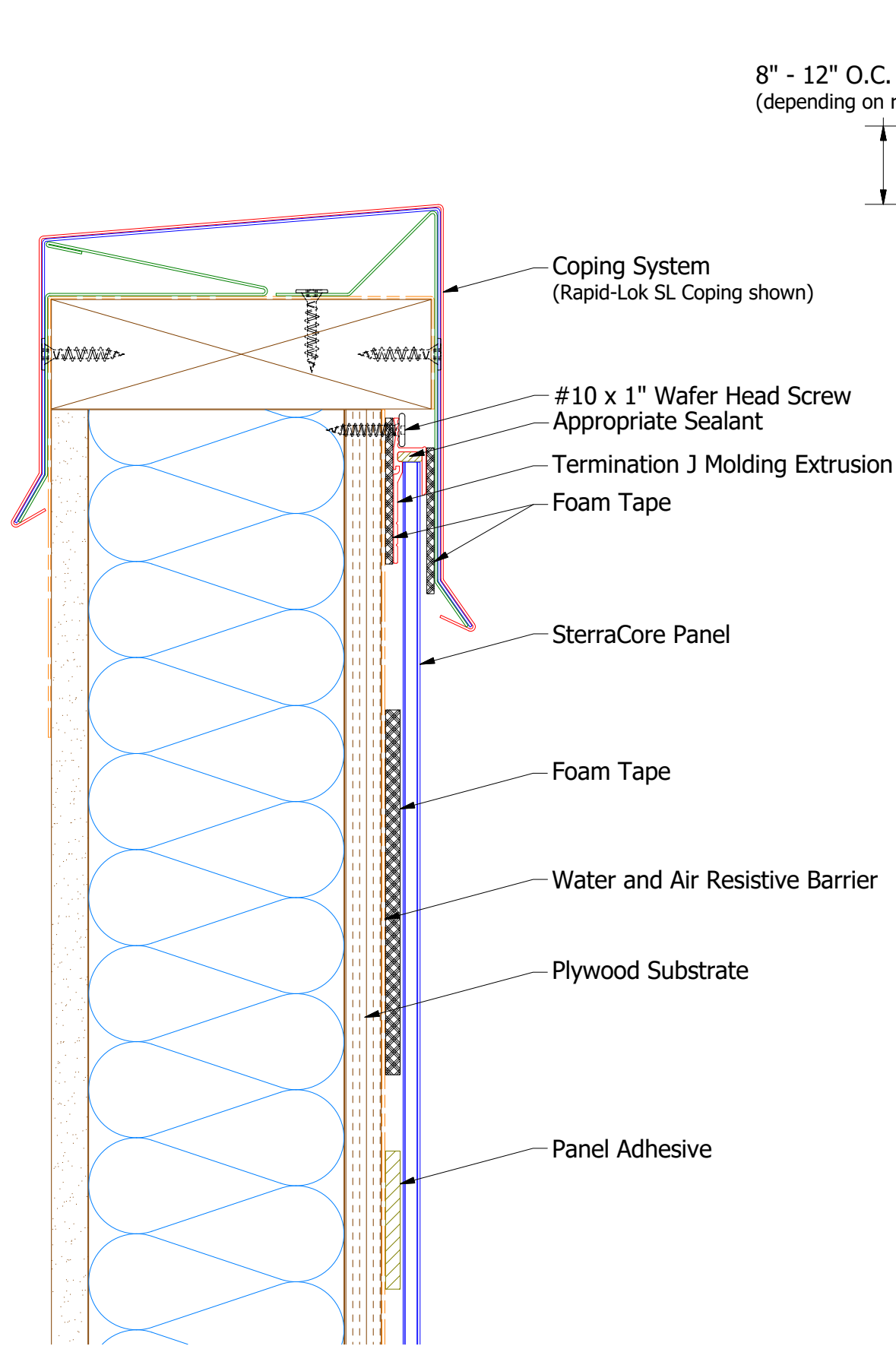
Reveal H Molding Extrusion



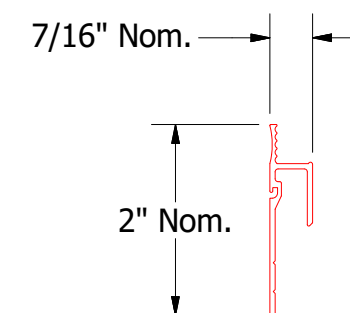
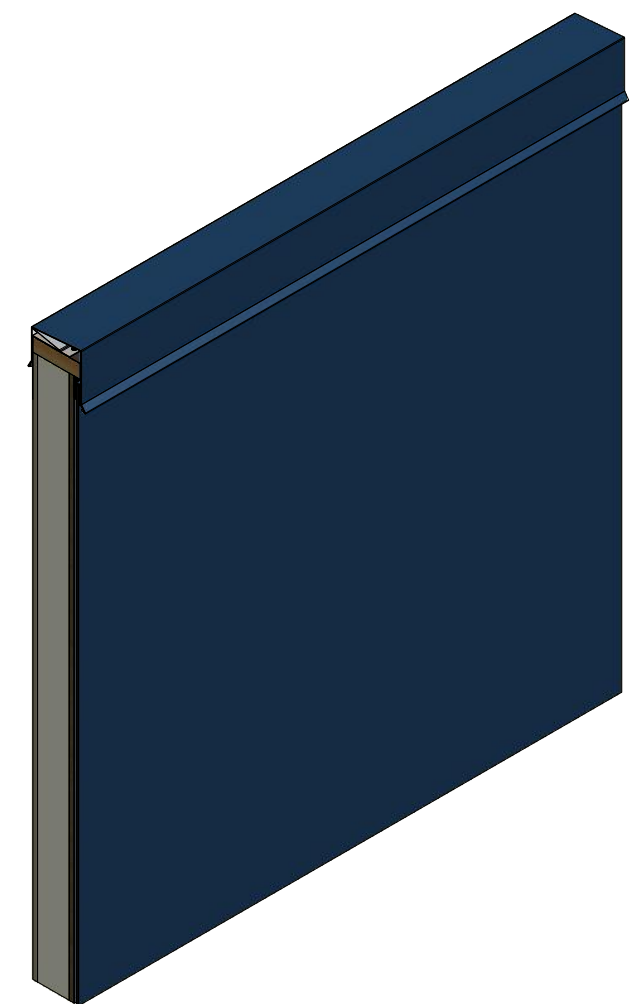
ATAS INTERNATIONAL, INC  
Allentown PA  
610-395-8445  
Mesa AZ  
480-558-7210

TITLE			
SterraCore Vertical Transition Detail			
DWG. NO.		DR	DATE
		KRK	4/12/2022
		APP	DATE
MATERIAL		SH. SIZE	SCALE
		B	X:X

REV. NO.	DATE	DESCRIPTION OF REVISION	BY	APP



- (1) Termination J Molding Extrusion installed on Horizontal Foam Tape 2" min. gap at 24" O.C.
- (2) Panel Adhesive applied 16"-24" O.C. Horizontally and 16" O.C. Vertically.
- (3) Foam Tape installed Vertically in between Panel Adhesive.



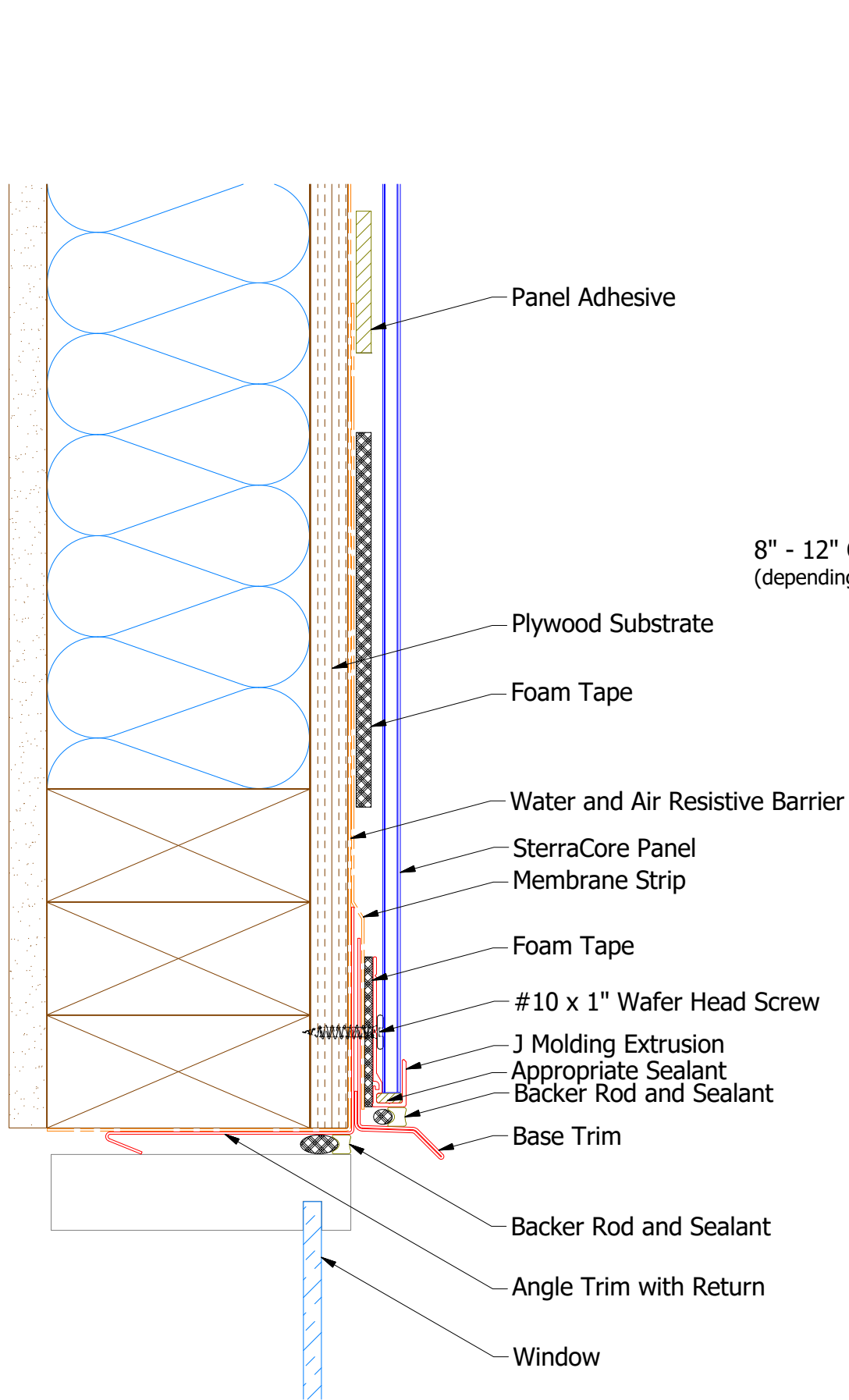
## Termination J Molding Extrusion

## SterraCore Panel

REV. NO.	DATE	DESCRIPTION OF REVISION	BY	APP	TITLE	DR	DATE
					DWG. NO.	KRK	4/12/2022
					MATERIAL	APP	DATE
					SH. SIZE	B	SCALE X:X

**ATAS** ATAS INTERNATIONAL, INC  
Allentown PA  
610-395-8445  
Mesa AZ  
480-558-7210

**SterraCore Top of Wall Detail**



16" - 24" O.C. Max  
(depending on required PSF)

8" - 12" O.C. Max  
(depending on required PSF)

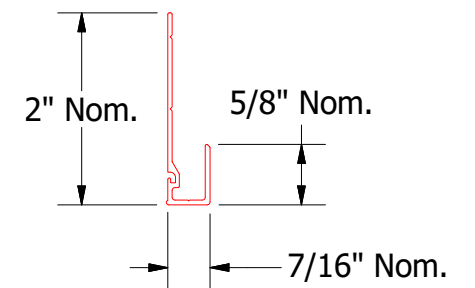
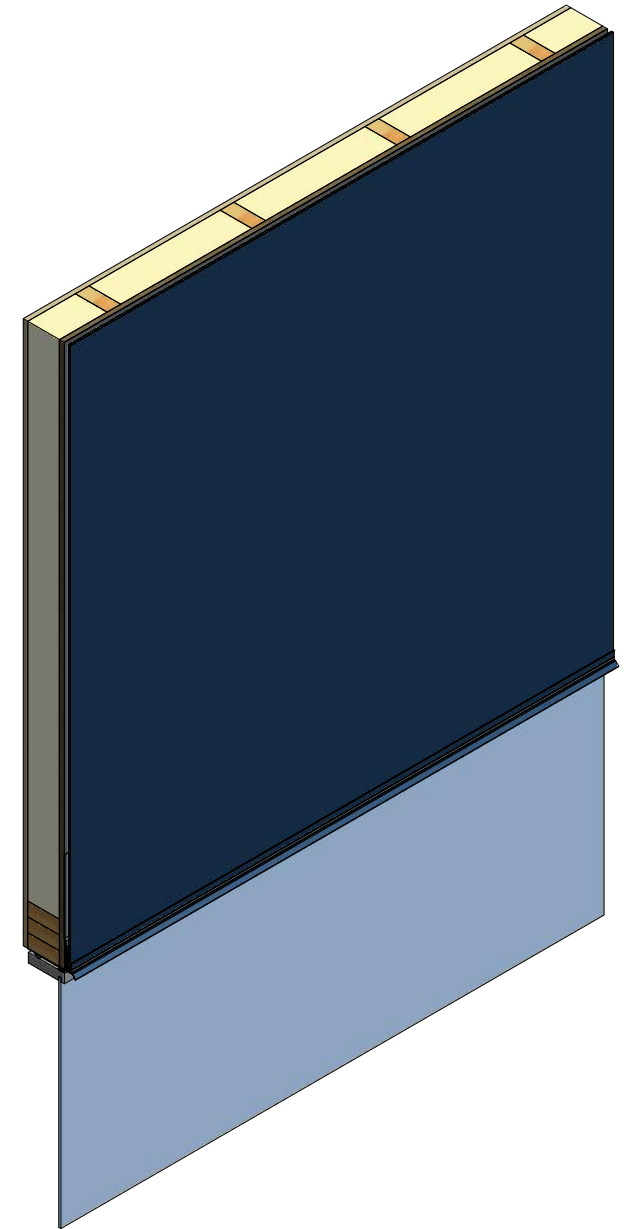
16" O.C.

2"

(1) J Molding Extrusion installed on Horizontal Foam Tape 2" min. gap at 24" O.C.

(2) Panel Adhesive applied 16"-24" O.C. Horizontally and 16" O.C. Vertically.

(3) Foam Tape installed Vertically in between Panel Adhesive.



## J Molding Extrusion

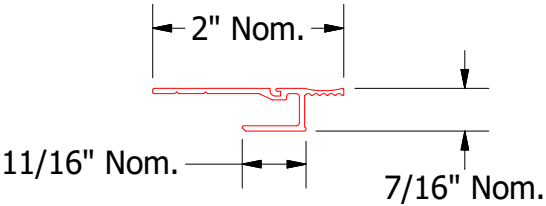
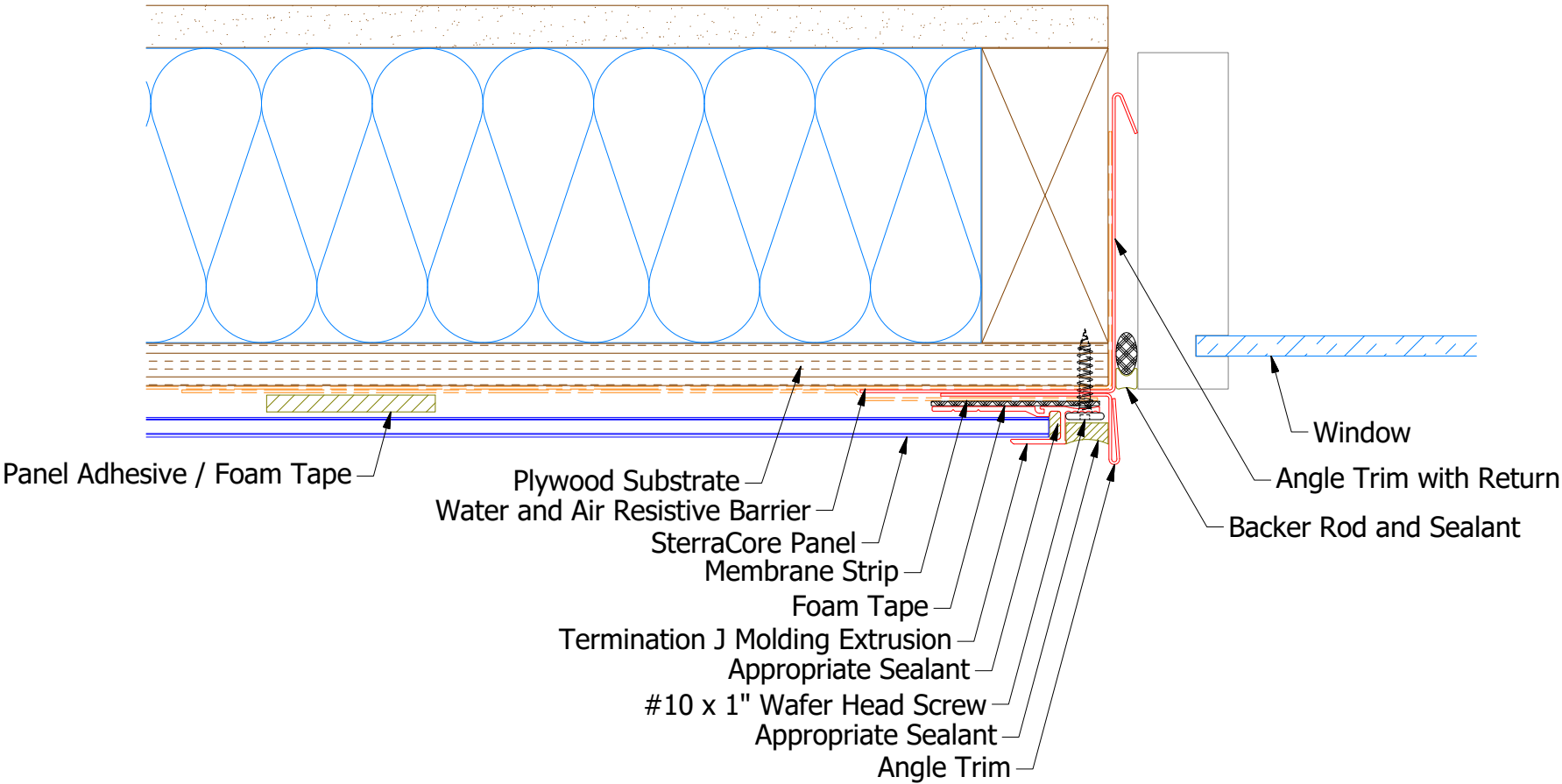
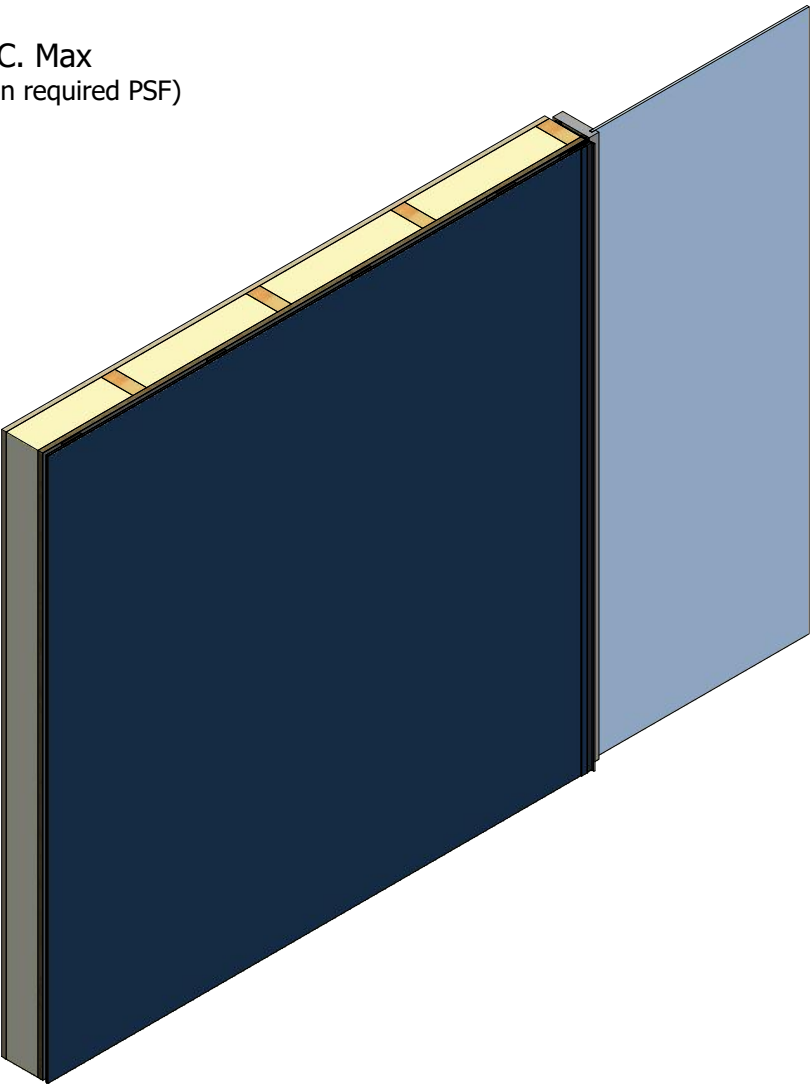
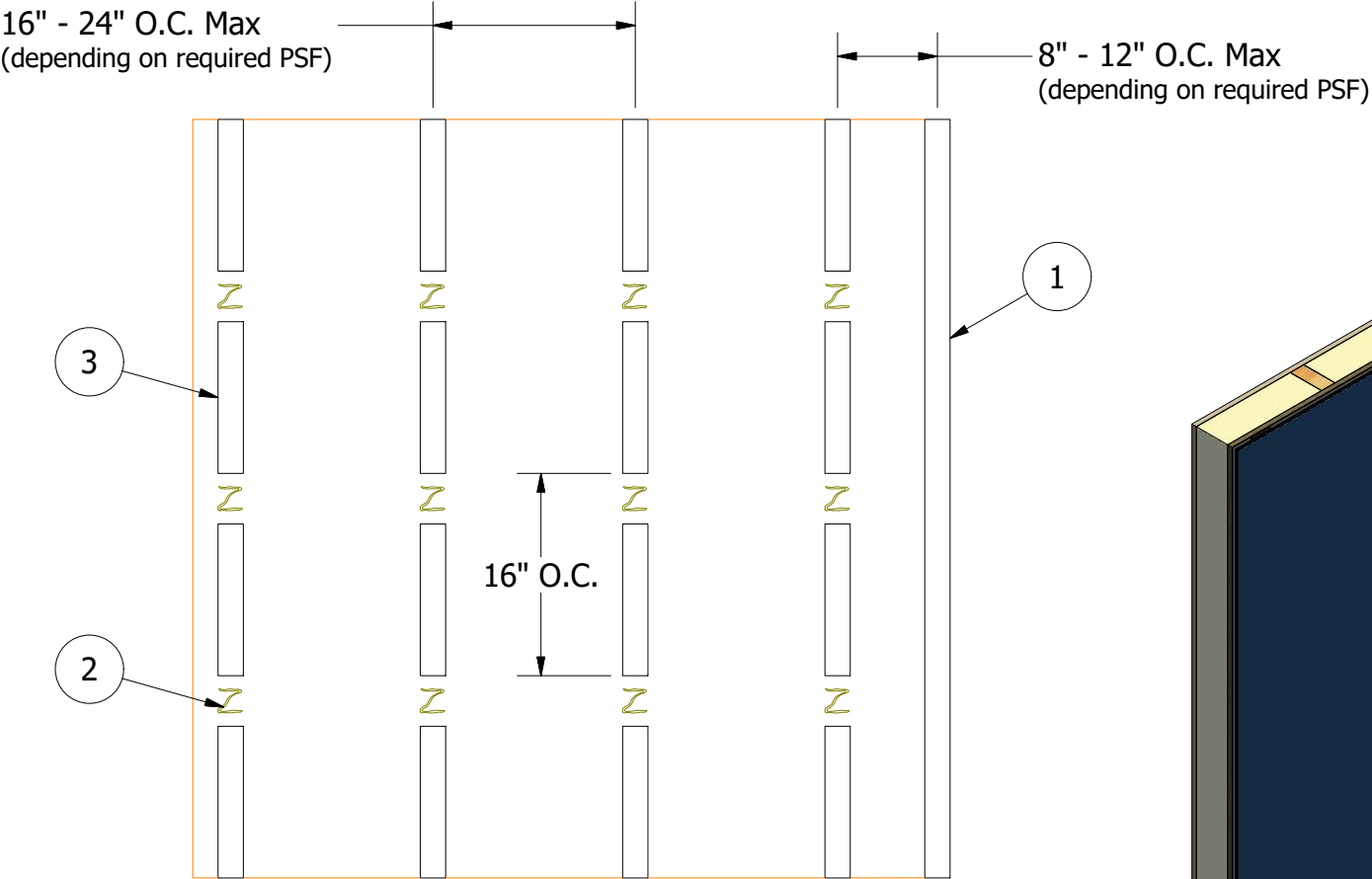
## SterraCore Panel

REV. NO.		DATE	DESCRIPTION OF REVISION	BY	APP
DWG. NO.		DR	KRK	DATE	4/12/2022
MATERIAL		APP		DATE	
SH. SIZE		B	SCALE	X:X	

**ATAS** ATAS INTERNATIONAL, INC  
Allentown PA  
610-395-8445  
Mesa AZ  
480-558-7210

### SterraCore Head Detail

- (1) Termination J Molding Extrusion installed on Vertical Foam Tape.
- (2) Panel Adhesive applied 16"-24" O.C. Horizontally and 16" O.C. Vertically.
- (3) Foam Tape installed Vertically in between Panel Adhesive.



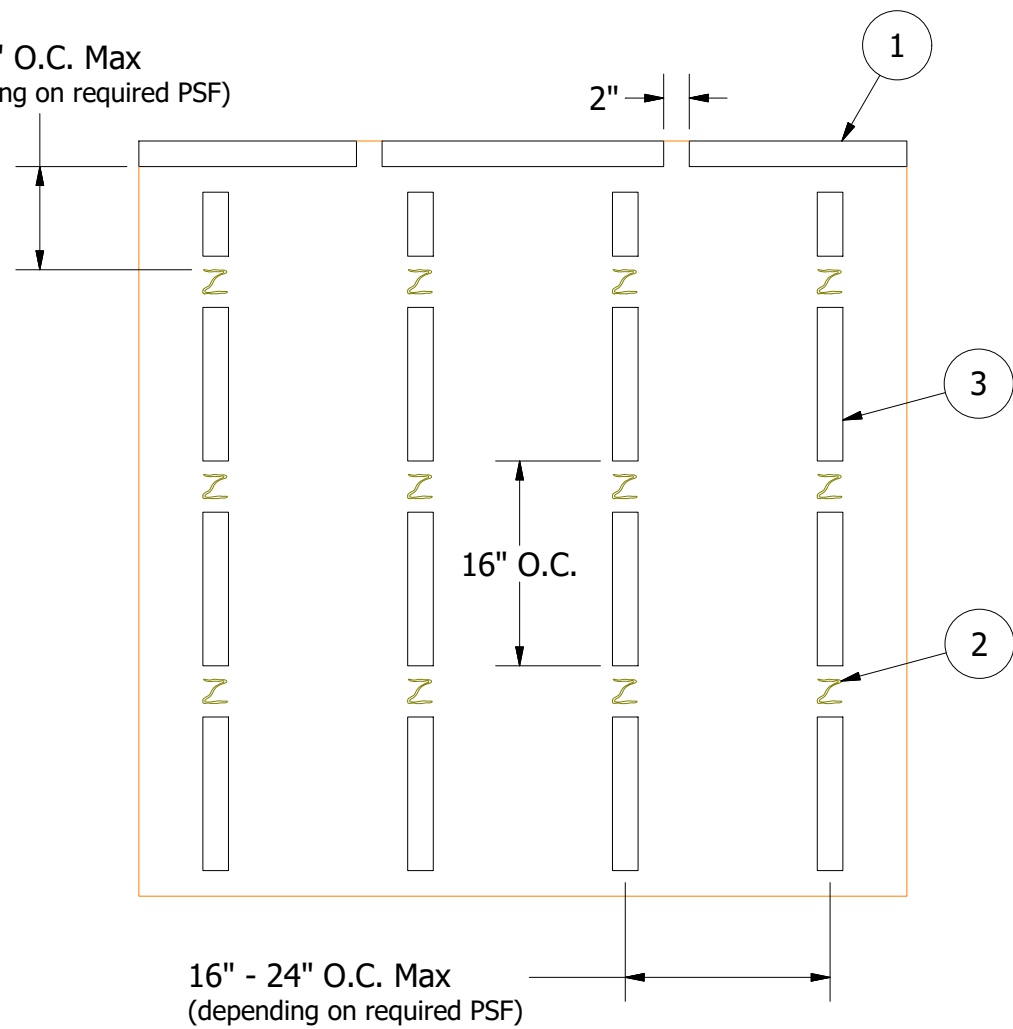
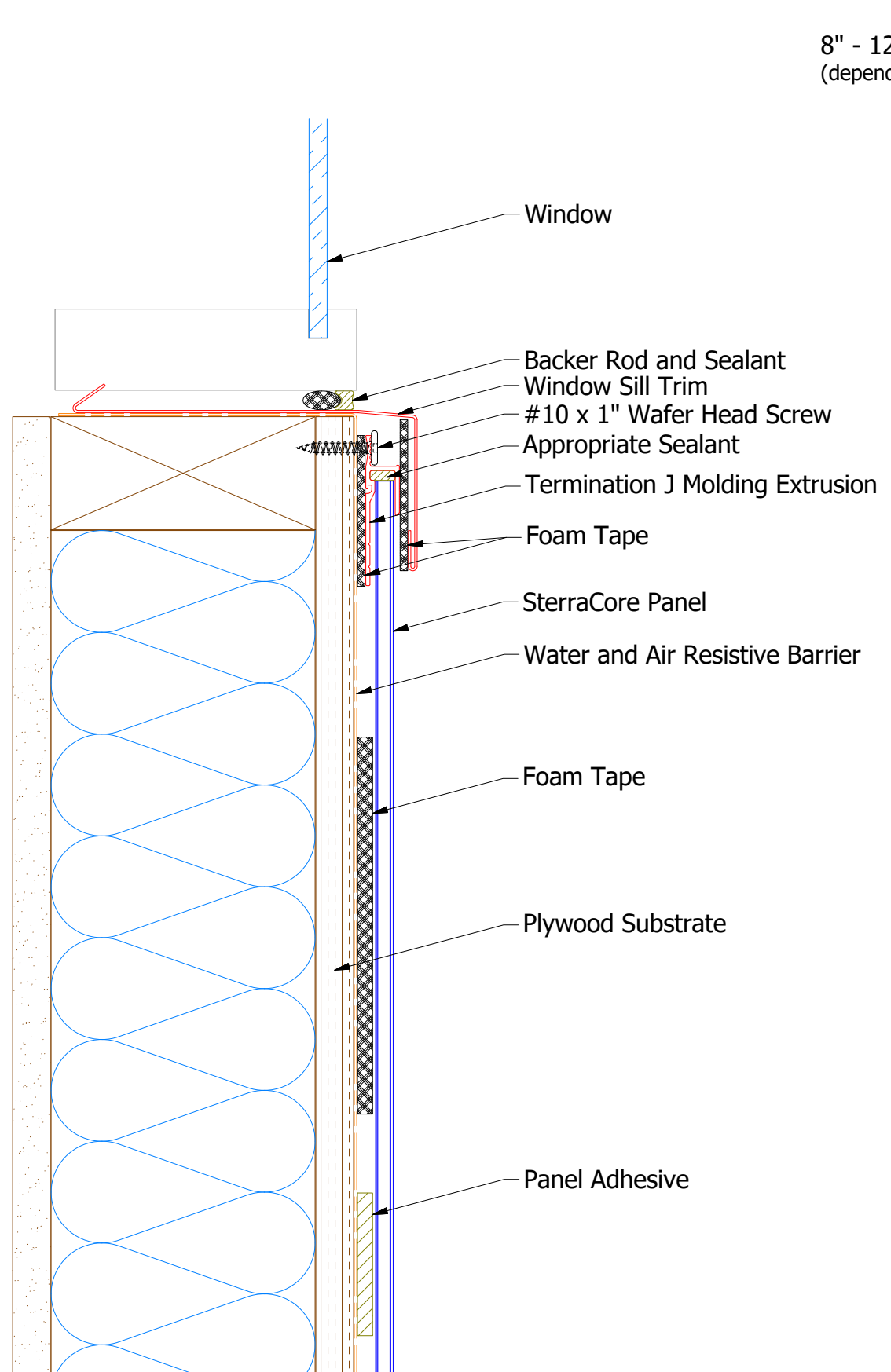
Termination J Molding Extrusion



SterraCore Panel

REV. NO.	DATE	DESCRIPTION OF REVISION	BY	APP

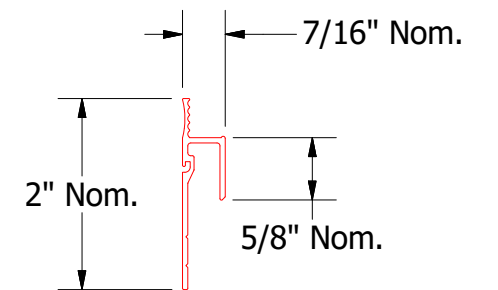
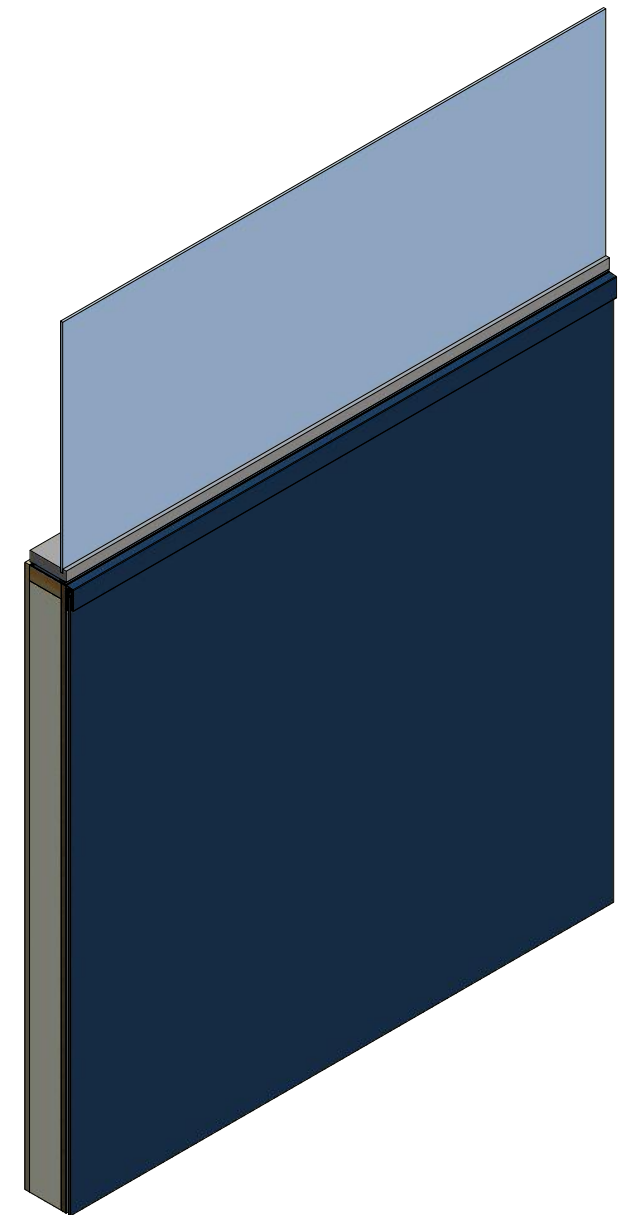
<div><div>ATAS</div><div>ATAS INTERNATIONAL, INC Allentown PA 610-395-8445 Mesa AZ 480-558-7210</div></div>			
TITLE SterraCore Jamb Detail			
DWG. NO.		DR KRK	DATE 4/12/2022
MATERIAL		APP	DATE
SH. SIZE B		SCALE X:X	



(1) Termination J Molding Extrusion installed on Horizontal Foam Tape 2" min. gap at 24" O.C.

(2) Panel Adhesive applied 16"-24" O.C. Horizontally and 16" O.C. Vertically.

(3) Foam Tape installed Vertically in between Panel Adhesive.



## Termination J Molding Extrusion

## SterraCore Panel

REV. NO.	DATE	DESCRIPTION OF REVISION	BY	APP	TITLE	DR	KRK	DATE	4/12/2022
					DWG. NO.	APP		DATE	
					MATERIAL	SH. SIZE	B	SCALE	X:X

ATAS  
ATAS INTERNATIONAL, INC  
Allentown PA  
610-395-8445  
Mesa AZ  
480-558-7210

### SterraCore Window Sill Detail