

CORRUGATED PANEL

SKU: BWC374

MATERIAL

.032, .040, .050 aluminum
 24, 22*, 20* ga. metallic coated steel
 24, 22*, 20* ga. 55% Al-Zn alloy coated steel with acrylic coating
 16, 20 oz. copper*[^]
 .8, 1.0, 1.2 mm zinc*[^]

[^]Inquire for available panel widths

PANEL SPECS

Coverage: 37 1/4"
 Minimum Length: 6'-0"
 Depth: 7/8"

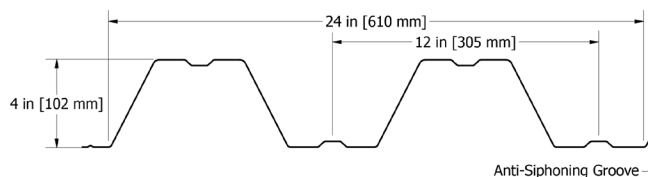
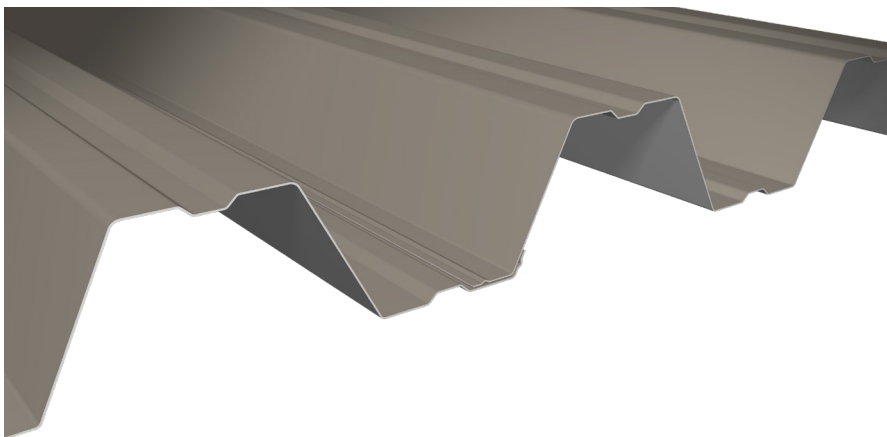
AVAILABLE

Crimp-Curving (convex and concave)
 Stretch Curving

TEXTURE

Smooth or Stucco Embossed

 www.atas.com/corrugated



SPAN WALL™

SKU: BWS240

MATERIAL

.032, .040, .050 aluminum
 24, 22*, 20, 18 ga. metallic coated steel
 24, 22*, 20*, 18* ga. 55% Al-Zn alloy coated steel with acrylic coating
 .8, 1.0 mm zinc*
 16, 20 oz. copper*

PANEL SPECS

Coverage: 24"
 Minimum Length: 6'-0"
 Depth: 4"

AVAILABLE

Crimp-Curving (convex and concave)

TEXTURE

Smooth or Stucco Embossed

 www.atas.com/spanwall