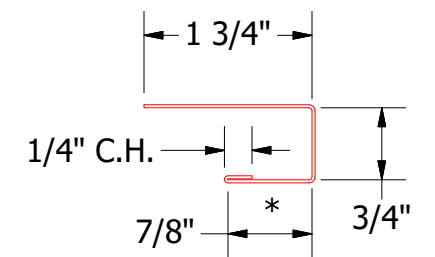
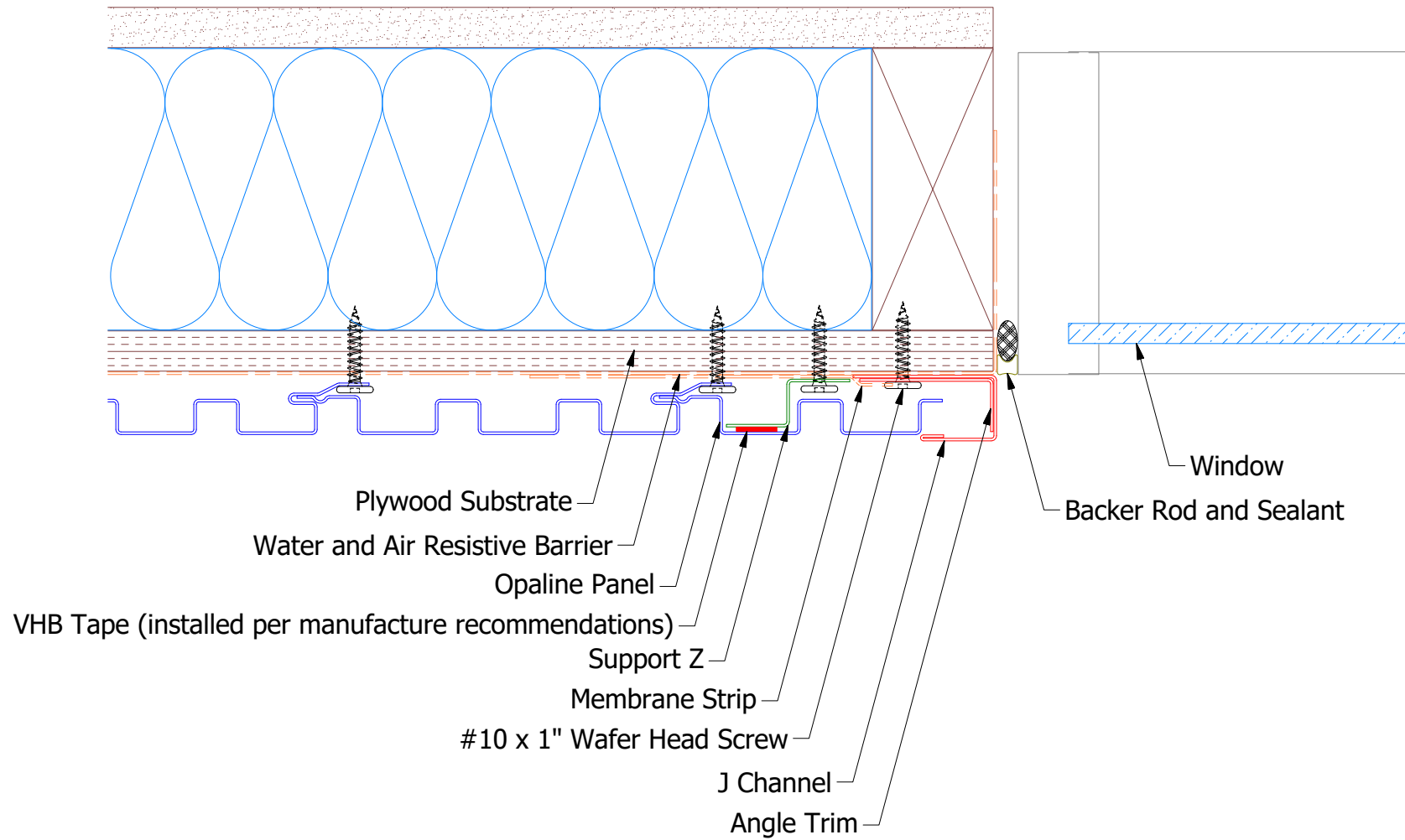
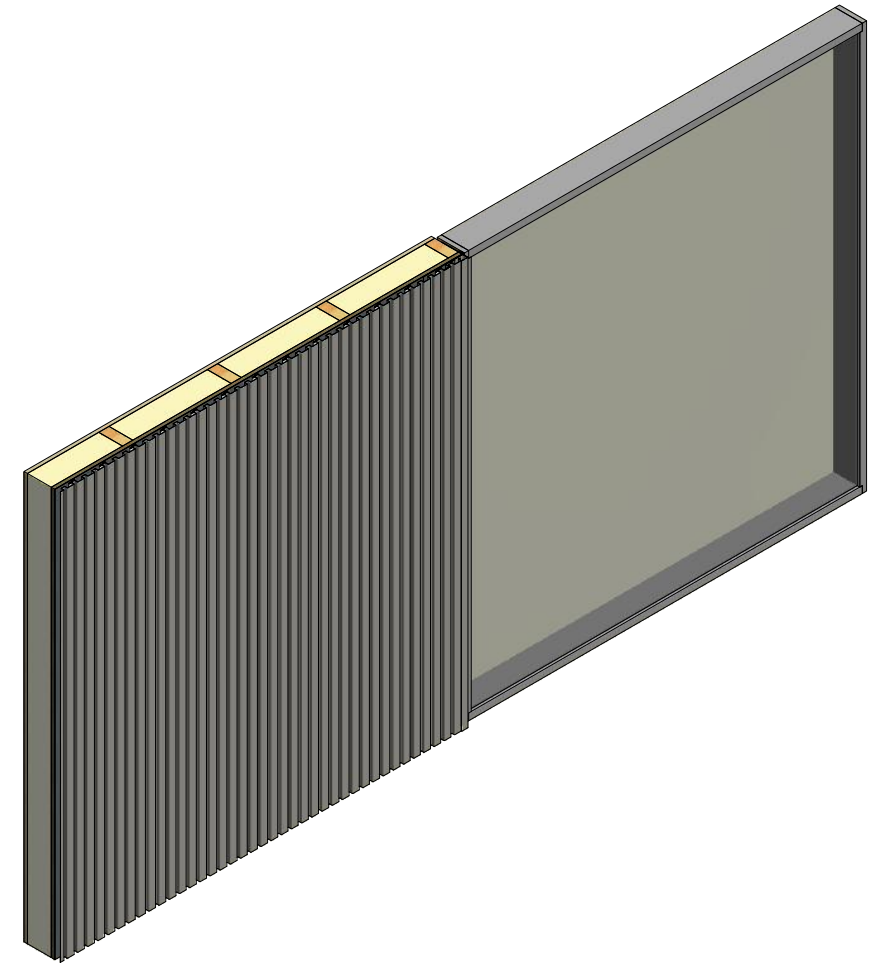
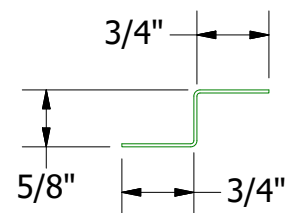


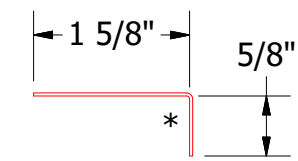
Vertical Panel



J Channel

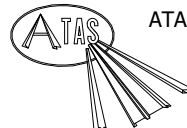


Support Z



Angle Trim

Note: * denotes color side.
 Note: stainless steel pop rivets maybe needed along with VHB tape for longer panels.

| | | | |
|---|-------------------|---|--------------------|
|  ATAS INTERNATIONAL, INC Allentown PA 610-395-8445 Mesa AZ 480-558-7210 | | TITLE Opaline Existing Jamb Window Detail | |
| | | DWG. NO. DR APP | DATE 12/31/2018 |
| REV. NO. 01 | DATE 8/30/2021 | DESCRIPTION OF REVISION Changed Pop Rivets to VHB Tape | BY APP KRK |
| SH. SIZE B | | SCALE X:X | |

| | | | |
|--|--|--|--|
| | | | |
| | | | |
| | | | |
| | | | |