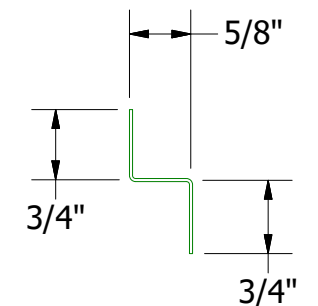
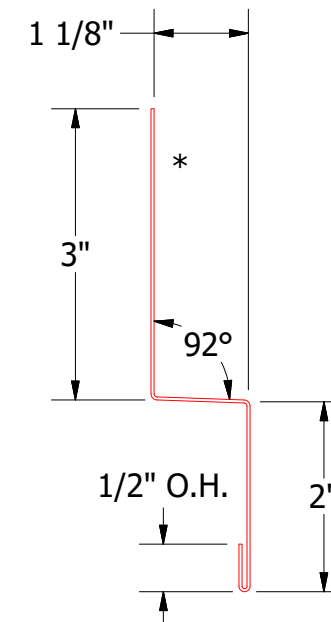
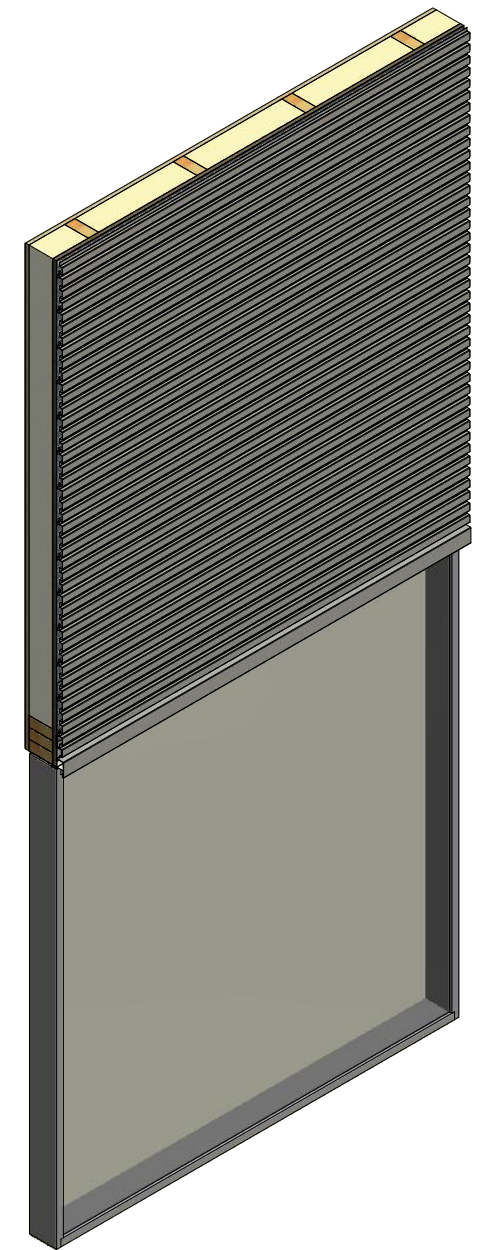
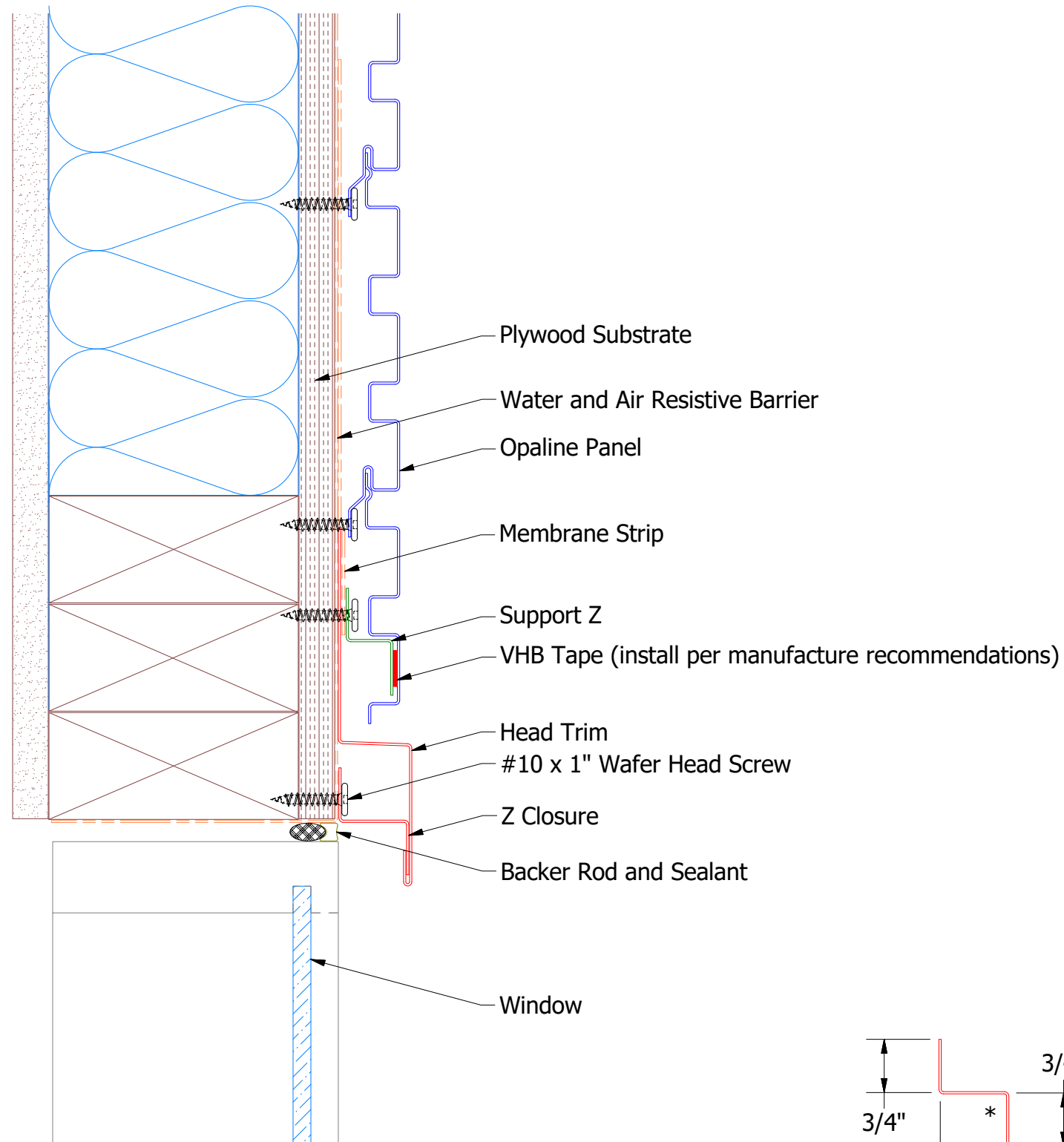
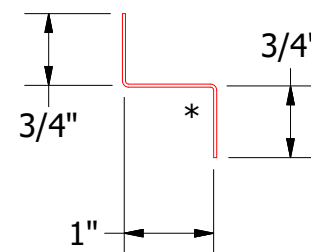


Horizontal Panel



Support Z



OPA681 - Z Closure

OPA550 - Head Trim

 ATAS INTERNATIONAL, INC Allentown PA 610-395-8445 Mesa AZ 480-558-7210		TITLE Opaline Head Existing Window Detail		
		DWG. NO.	DR	DATE
01	8/30/2021	Changed Pop Rivet to VHB Tape	KRK	12/27/2018
REV. NO.	DATE	DESCRIPTION OF REVISION	BY	APP
		MATERIAL	SH. SIZE	SCALE
			B	X:X

Note: * denotes color side.
 Note: stainless steel pop rivets maybe needed along with VHB tape for longer panels.

01	8/30/2021	Changed Pop Rivet to VHB Tape	KRK	12/27/2018
REV. NO.	DATE	DESCRIPTION OF REVISION	BY	APP
		MATERIAL	SH. SIZE	SCALE
			B	X:X