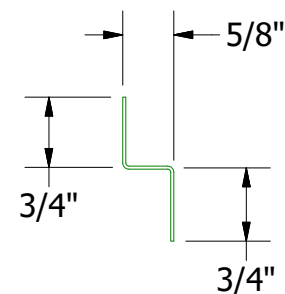
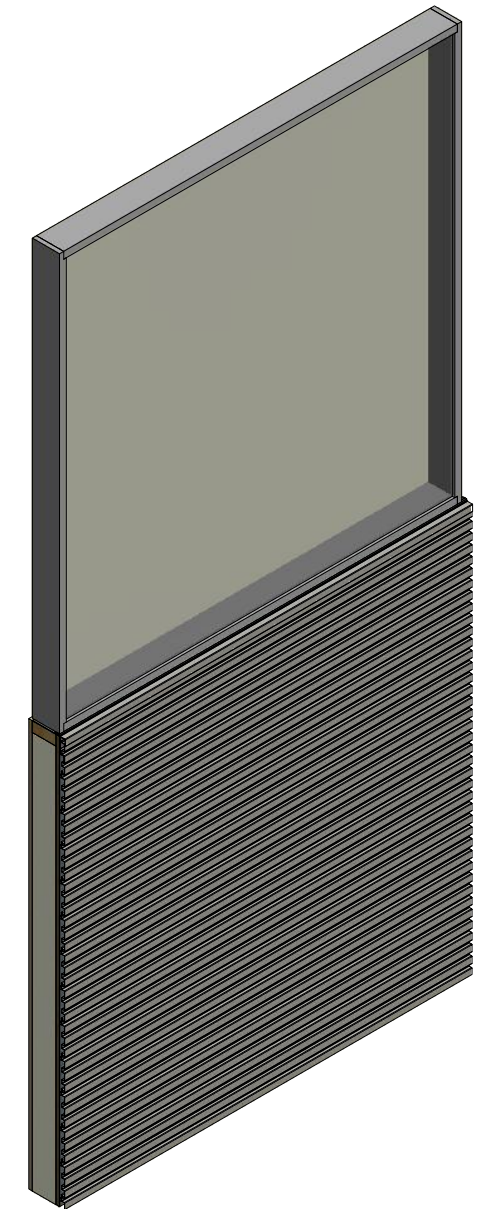
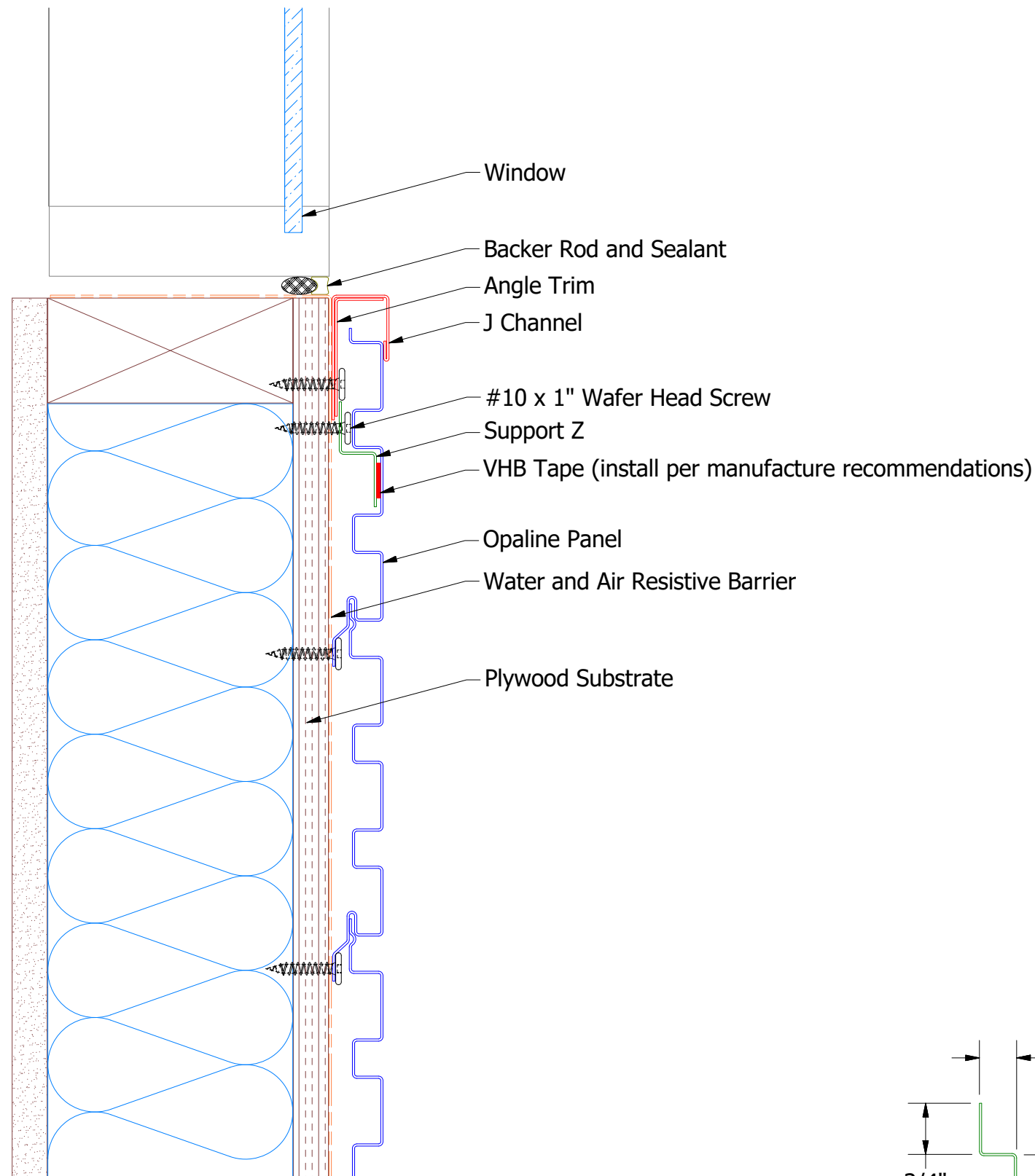
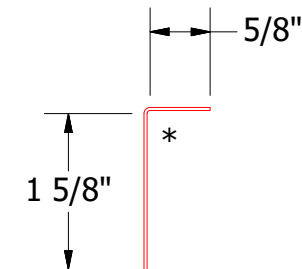


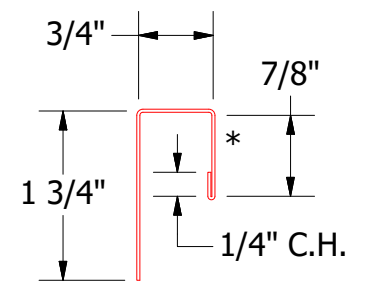
Horizontal Panel



OPA681 - Support Z



OPA680 - Angle Trim



OPA034 - J Channel

Note: * denotes color side.
 Note: Stainless Steel Pop Rivets maybe needed along with VHB Tape for longer Panels.

 ATAS INTERNATIONAL, INC Allentown PA 610-395-8445 Mesa AZ 480-558-7210		TITLE Opaline Existing Window Sill Detail		
		DWG. NO.	DR	DATE
01	8/31/2021	Changed Pop Rivets to VHB Tape	KRK	12/31/2018
REV. NO.	DATE	DESCRIPTION OF REVISION	BY	APP
		MATERIAL	SH. SIZE	SCALE
			B	X:X