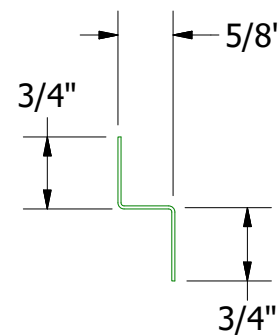
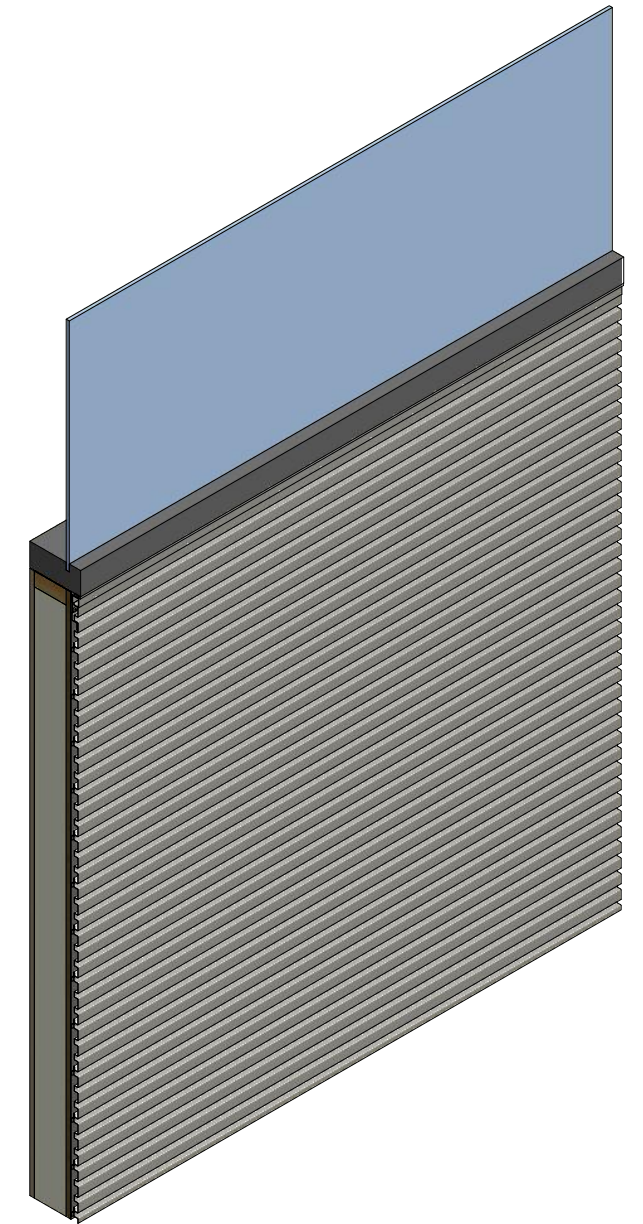
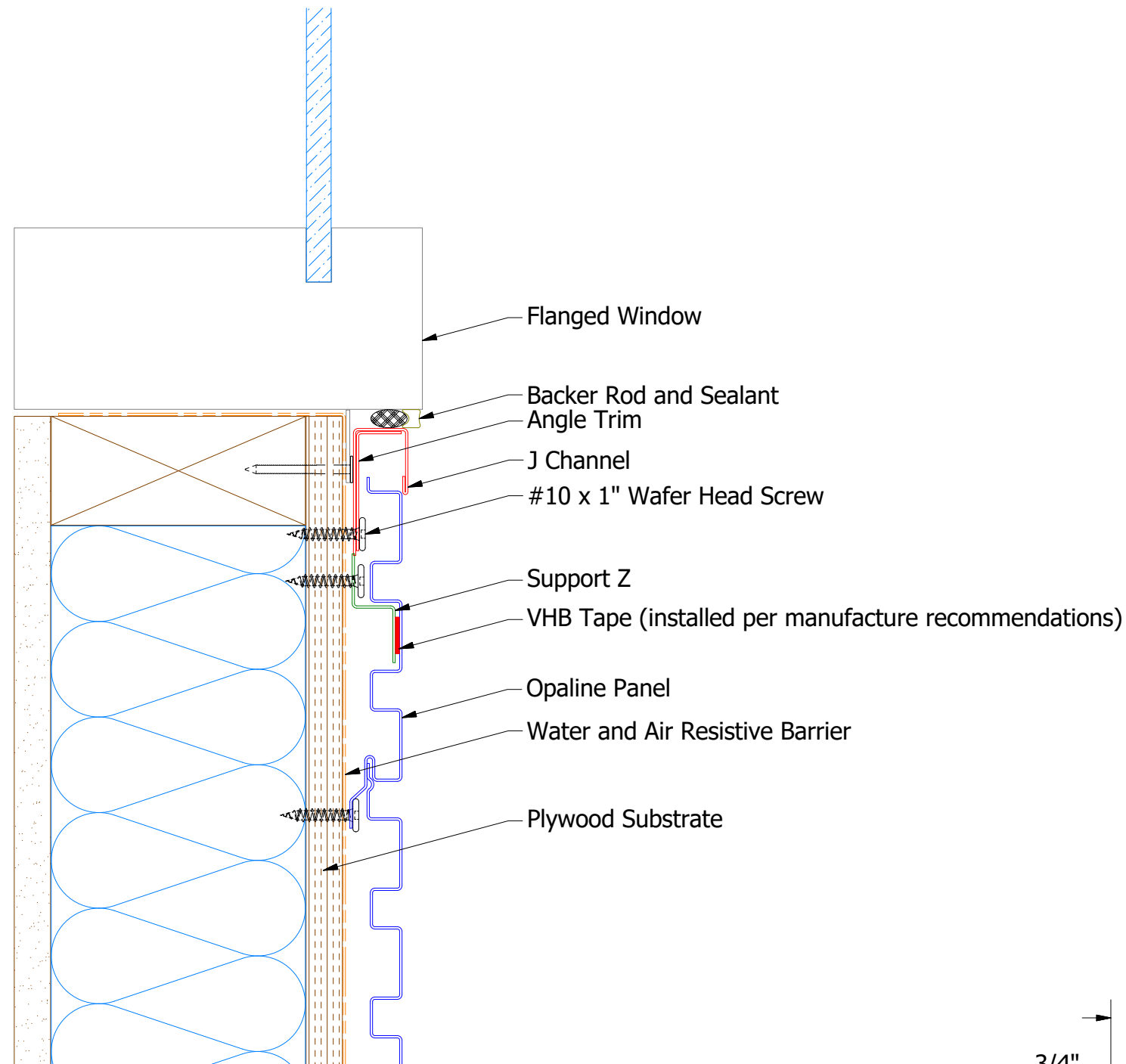
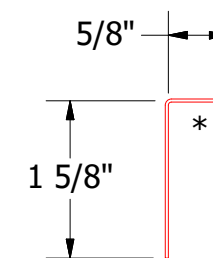


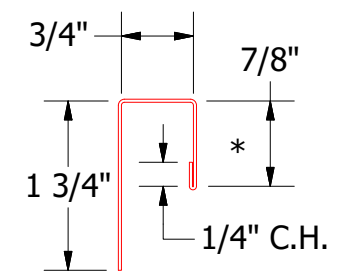
# Horizontal Panel



OPA681 - Support Z



OPA680 - Angle Trim



OPA034 - J Channel

Note: \* denotes color side.  
 Note: stainless steel pop rivets maybe needed along with VHB tape for longer panels.

		ATAS INTERNATIONAL, INC Allentown PA 610-395-8445 Mesa AZ 480-558-7210	
		TITLE <b>Opaline Window Sill Flange Detail</b>	
DWG. NO.		DR	DATE
01	8/31/2021	MBP	7/31/2018
REV. NO.	DATE	APP	DATE
	DESCRIPTION OF REVISION	BY	SCALE
		APP	X:X
		SH. SIZE	B
