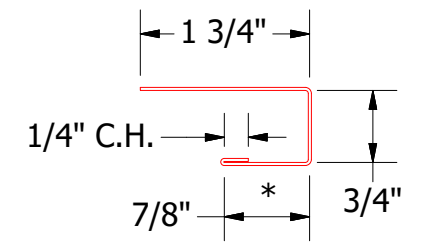
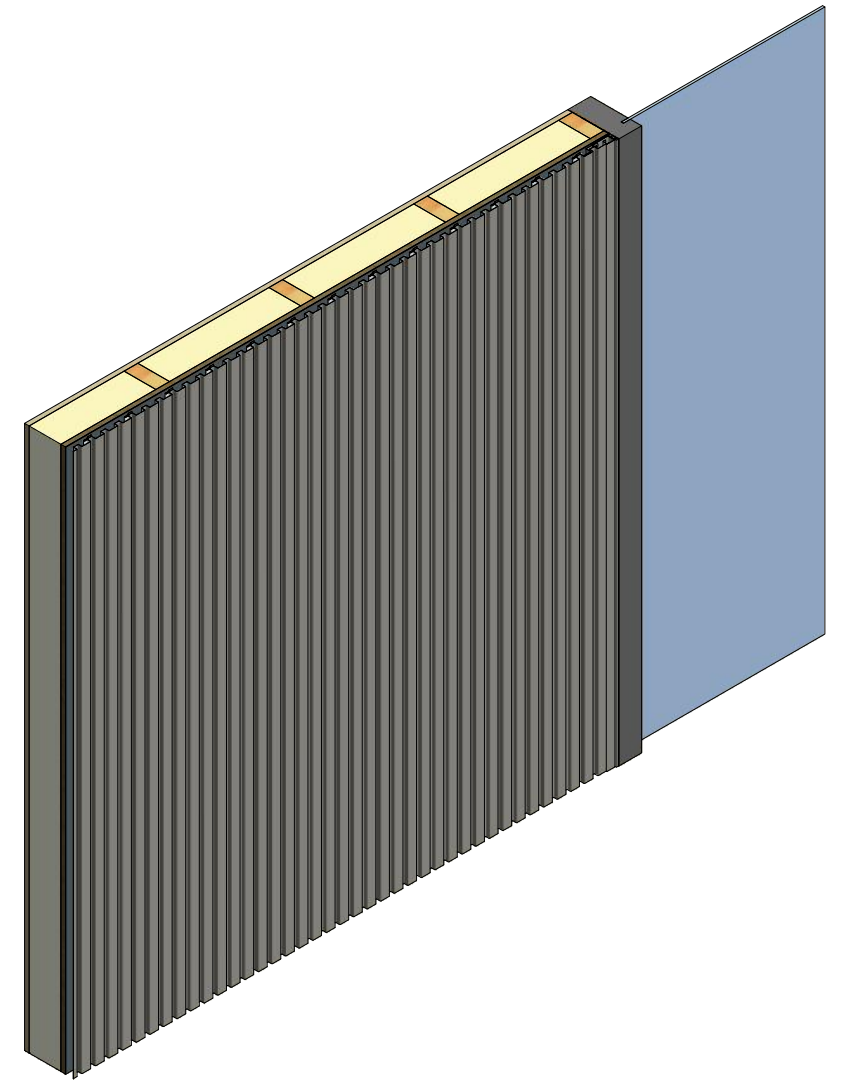
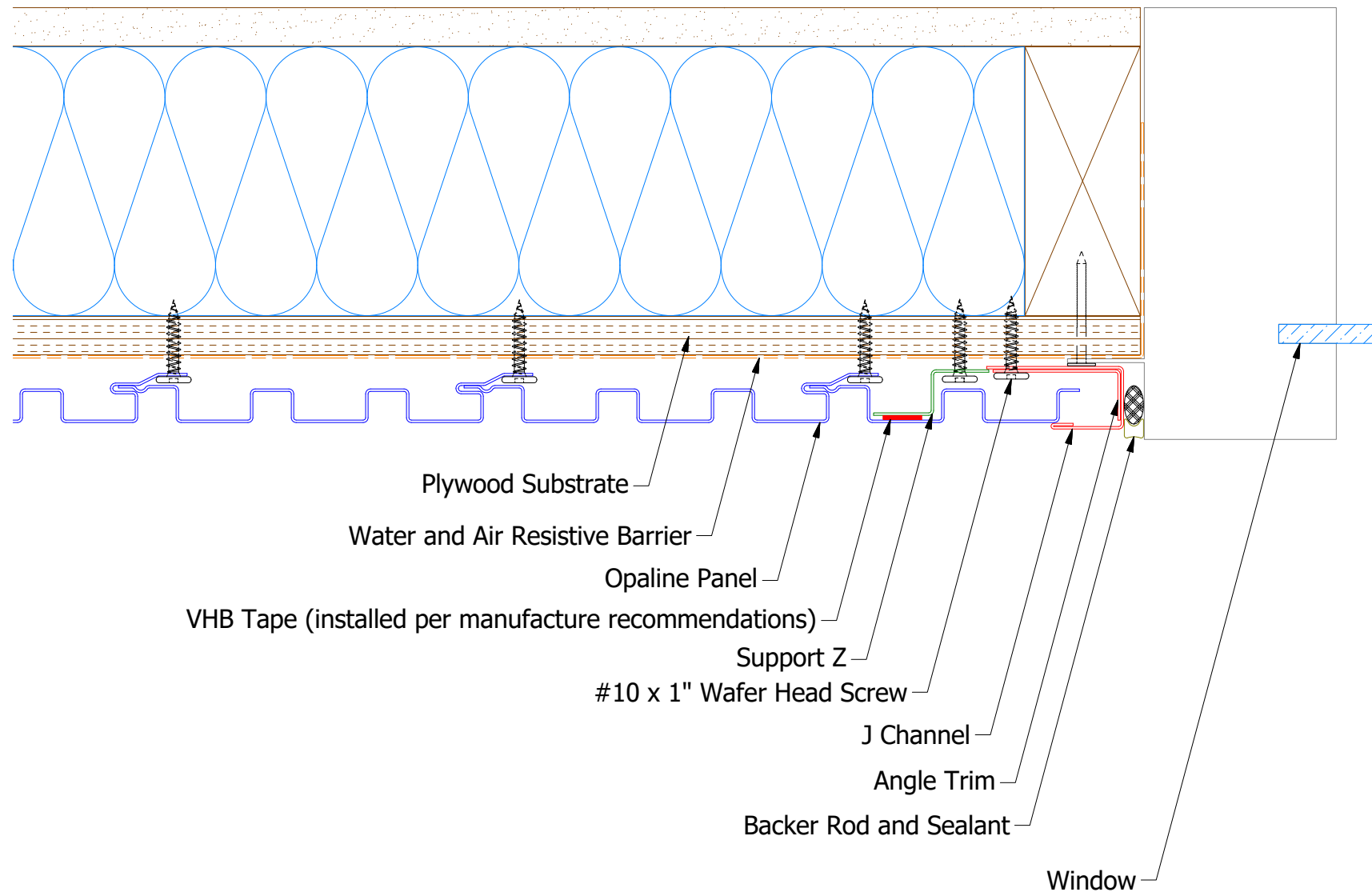
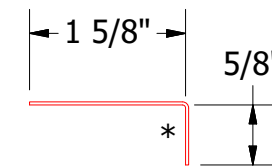


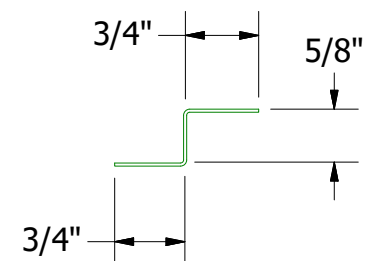
# Vertical Panel



**OPA034 - J Channel**




**OPA680 - Angle Trim**



**OPA681 - Support Z**

Note: \* denotes color side.  
 Note: stainless steel pop rivets maybe needed along with VHB tape for longer panels.

 <b>ATAS INTERNATIONAL, INC</b> Allentown PA 610-395-8445 Mesa AZ 480-558-7210		<b>Opaline Jamb Window Flange Detail</b>	
		DWG. NO.	DR MBP DATE 7/31/2018
MATERIAL		APP	DATE
REV. NO.	DATE	DESCRIPTION OF REVISION	BY APP
SH. SIZE B		SCALE X:X	