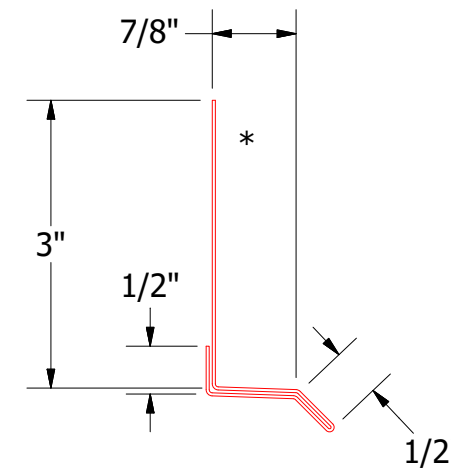
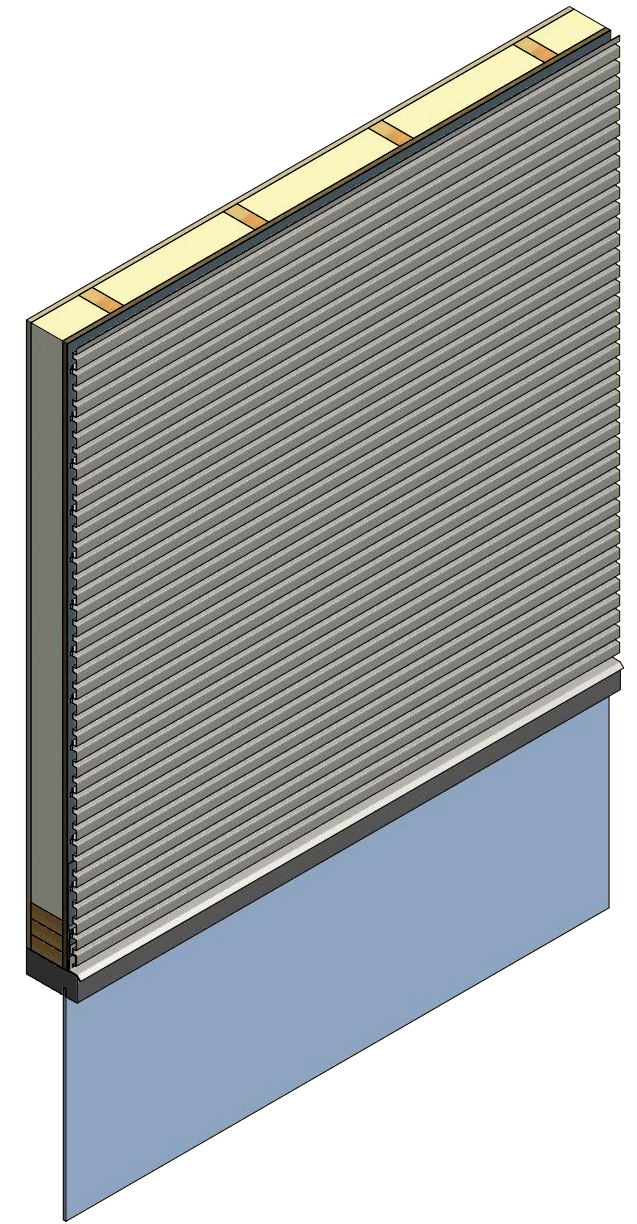
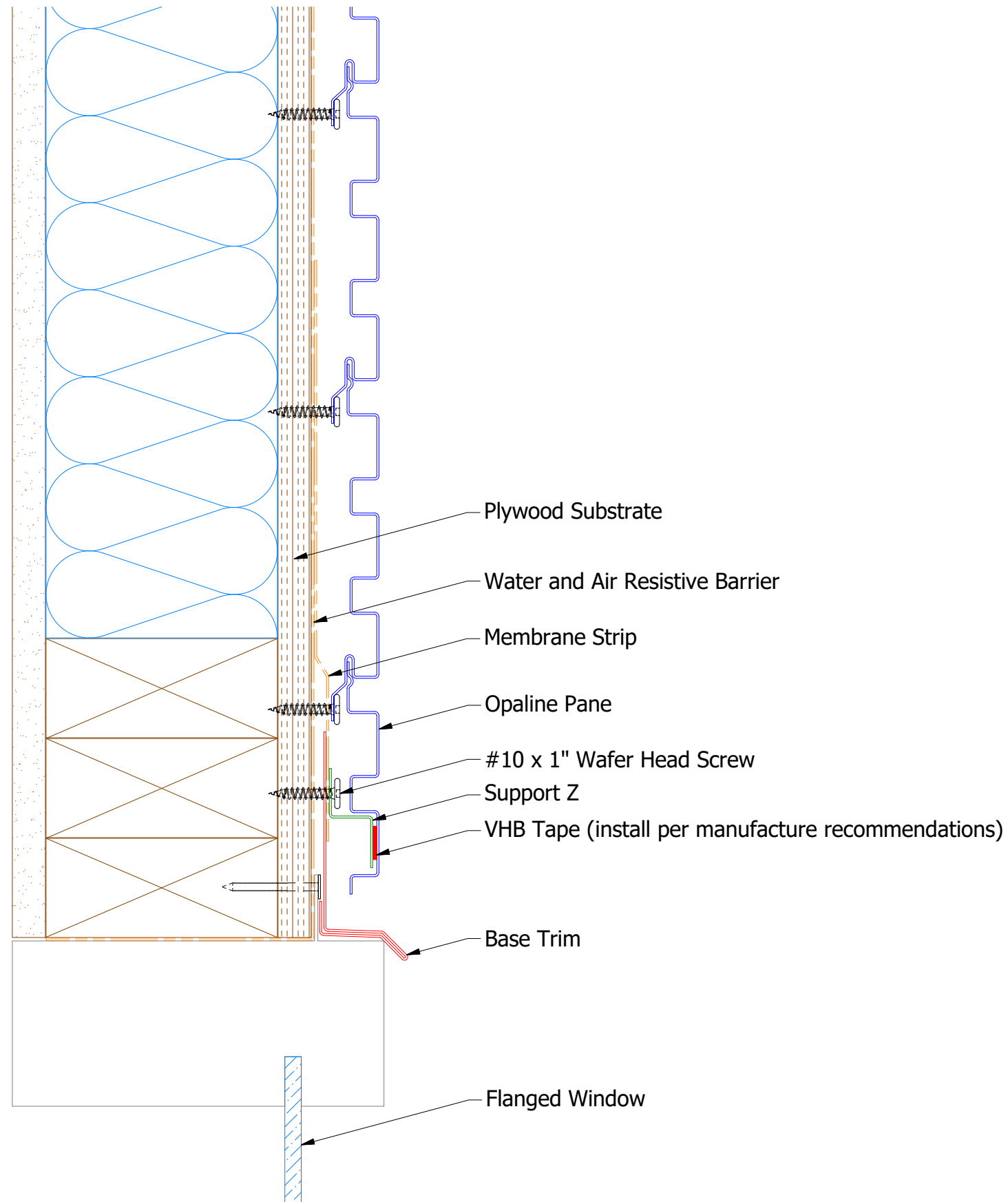
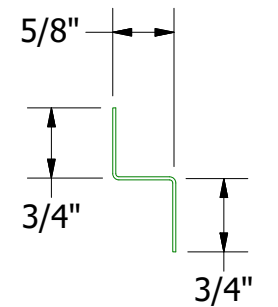


Horizontal Panel



OPA661 - Base Trim



OPA681 - Support Z

		ATAS INTERNATIONAL, INC Allentown PA 610-395-8445 Mesa AZ 480-558-7210	
		Opaline Head Window Flange Detail	
DWG. NO.	DR	DATE	
01	MBP	7/31/2018	
REV. NO.	APP	DATE	
01	APP		
DATE	SH. SIZE	SCALE	
8/30/2021	B	X:X	

Note: * denotes color side.

Note: stainless steel pop rivets maybe needed along with VHB tape for longer panels.

REV. NO.	DATE	DESCRIPTION OF REVISION	BY	APP
01	8/30/2021	Changed Pop Rivet to VHB Tape	KRK	