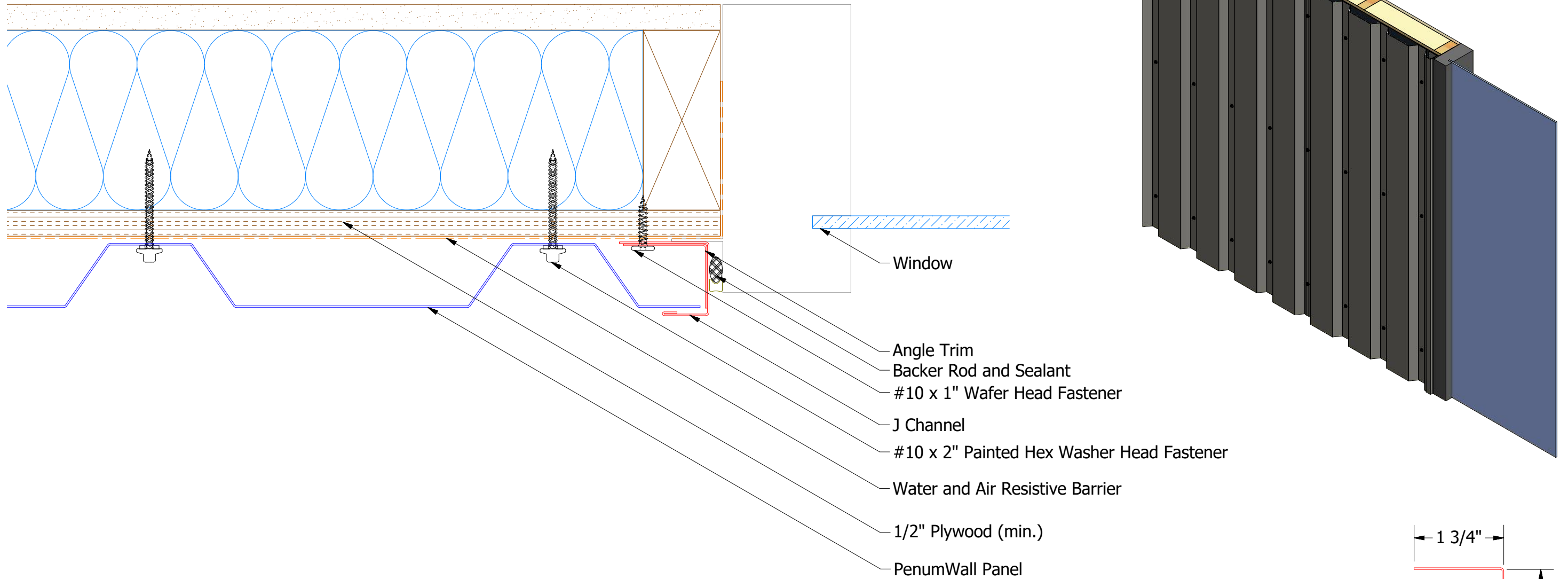
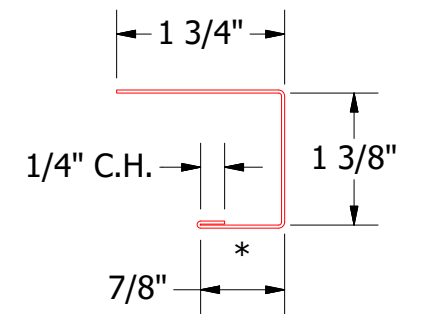


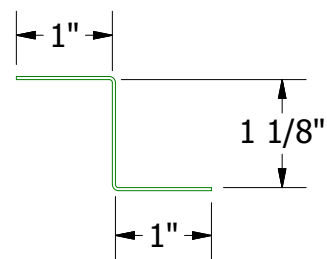
Vertical Panel



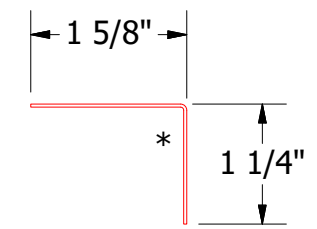
- Window
- Angle Trim
- Backer Rod and Sealant
- #10 x 1" Wafer Head Fastener
- J Channel
- #10 x 2" Painted Hex Washer Head Fastener
- Water and Air Resistive Barrier
- 1/2" Plywood (min.)
- PenumWall Panel



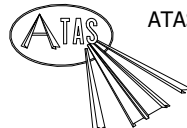
BPA158 - J Channel



BPA681 - Support Z
(if conditions apply)



BPA680 - Angle Trim

 ATAS INTERNATIONAL, INC Allentown PA 610-395-8445 Mesa AZ 480-558-7210		TITLE	
		PenumWall Jamb Flange Detail	
DWG. NO.	DR	DATE	
01	DMR	7/26/2018	
REV. NO.	APP	DATE	
01	APP		
MATERIAL		SH. SIZE	SCALE
		B	X:X

Note: * denotes color side.

REV. NO.	DATE	DESCRIPTION OF REVISION	BY	APP
01	3/22/2021	Added Support Z and color side note.	KRK	