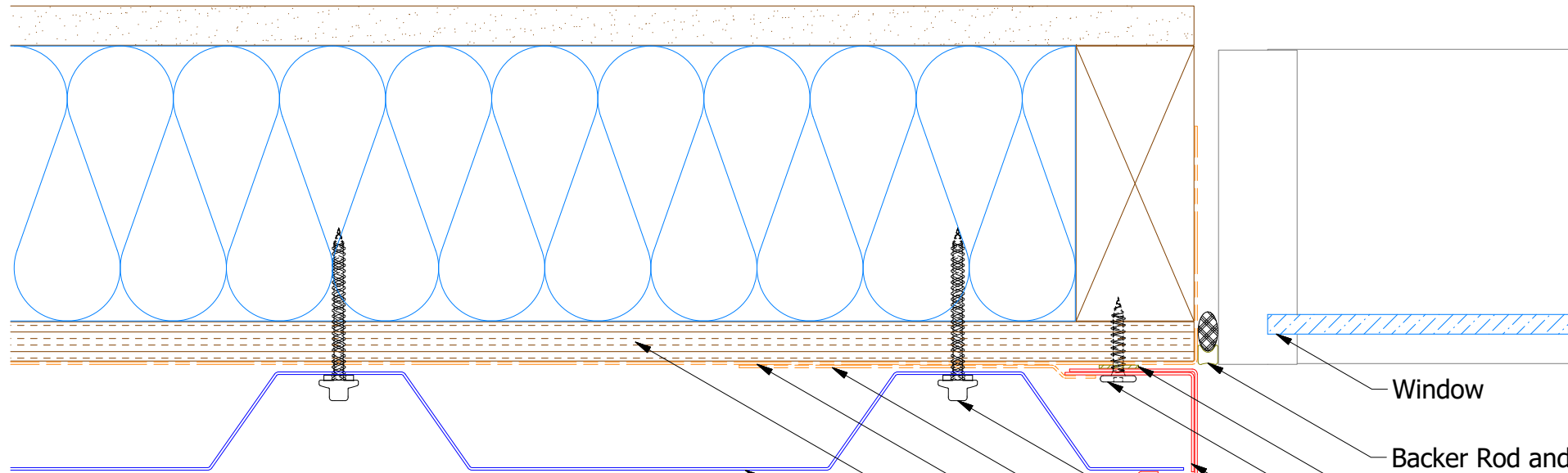
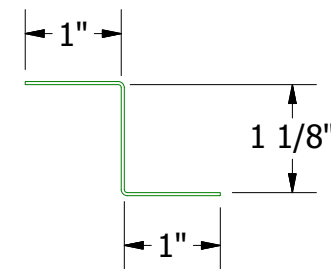
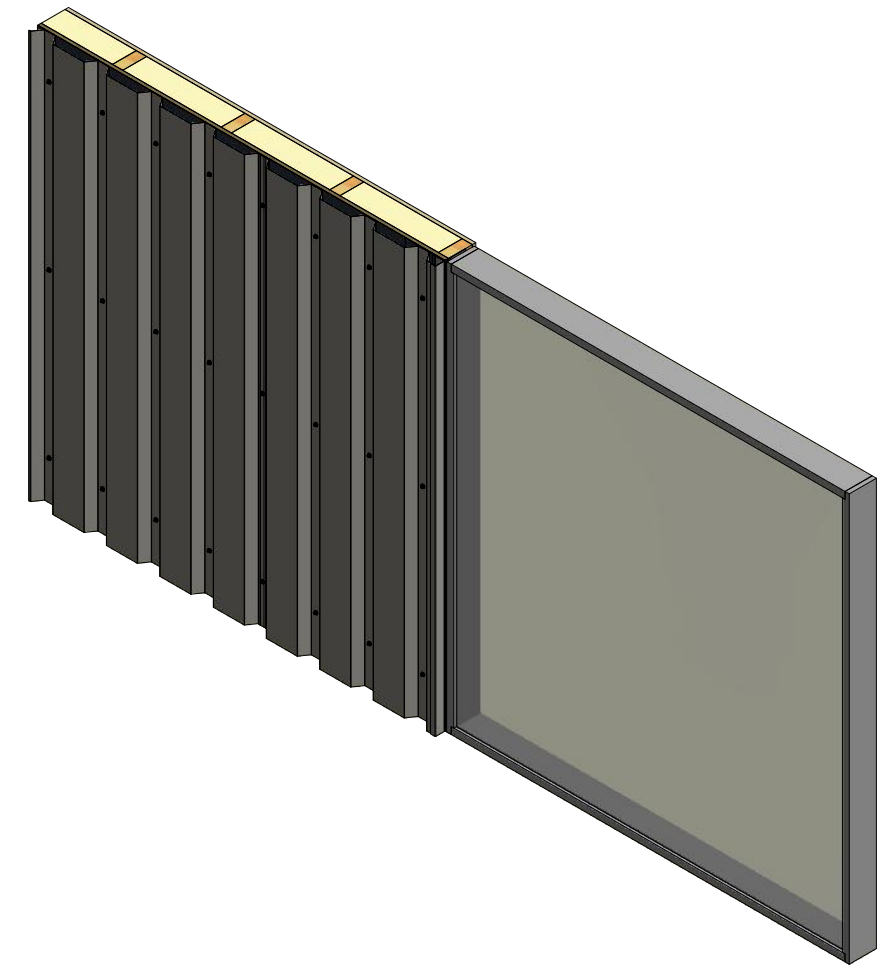


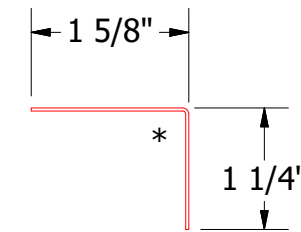
Vertical Panel



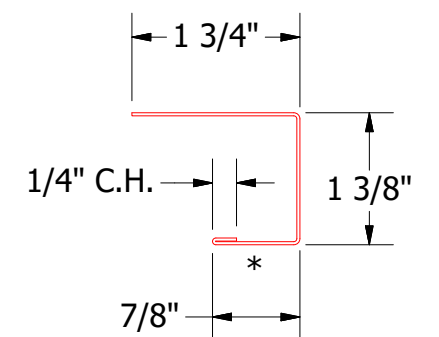
- Window
- Backer Rod and Sealant
- Butyl Tape
- #10 x 1" Wafer Head Fastener
- Angle Trim
- J Channel
- #10 x 2" Painted Hex Washer Head Fastener
- Membrane Strip
- Water and Air Resistive Barrier
- 1/2" Plywood (min.)
- PenumWall Panel



BPA681 - Support Z
(if conditions apply)



BPA680 - Angle Trim



BPA158 - J Channel

Note: * denotes color side.

		ATAS INTERNATIONAL, INC Allentown PA 610-395-8445 Mesa AZ 480-558-7210	
TITLE PenumWall Existing Jamb Detail			
DWG. NO.	DR	DMR	DATE 6/4/2018
01	3/22/2021	APP	DATE
REV. NO.	DATE	DESCRIPTION OF REVISION	BY APP
			SH. SIZE B SCALE X:X

REV. NO.	DATE	DESCRIPTION OF REVISION	BY	APP
01	3/22/2021	Added Support Z and color side note.	KRK	