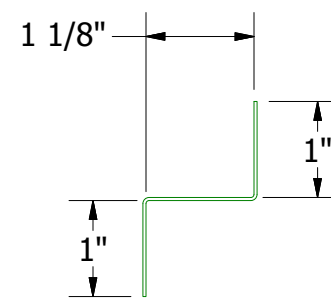
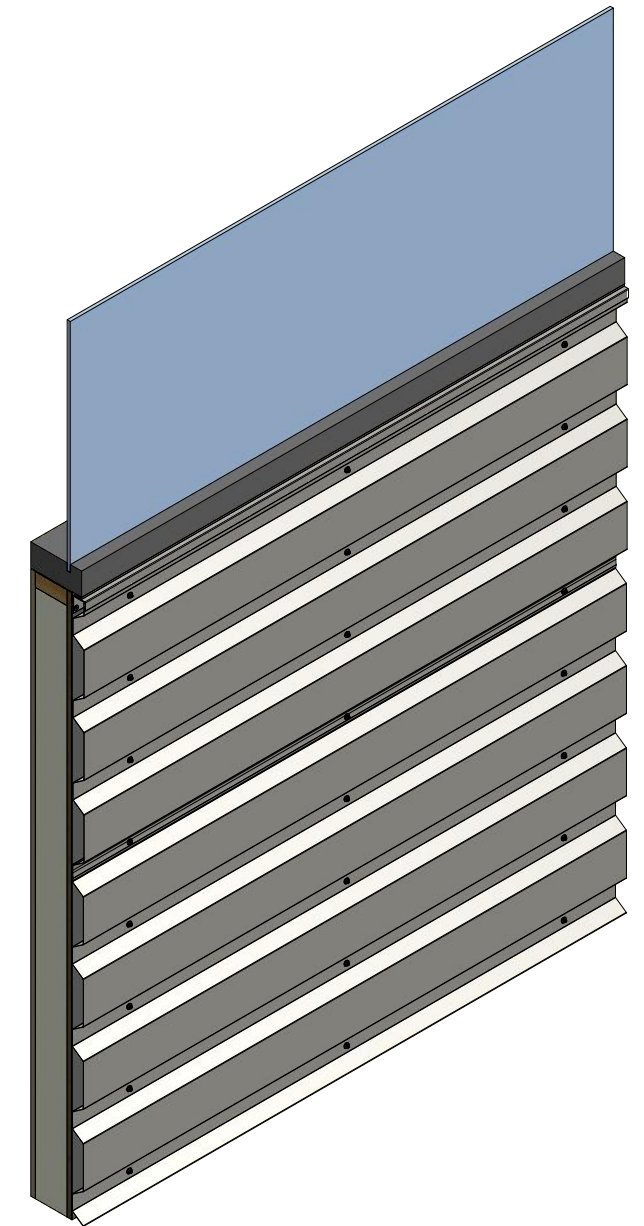
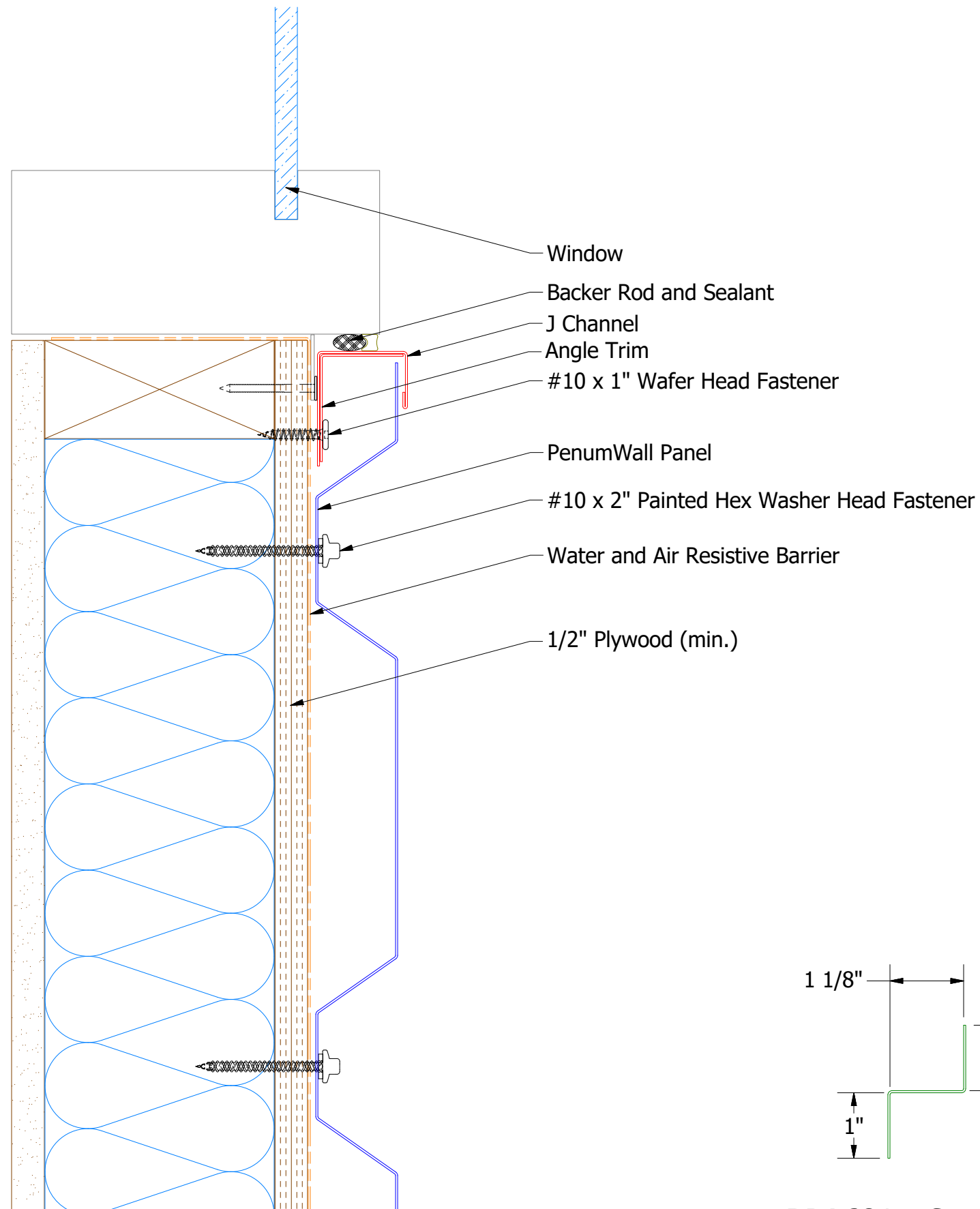
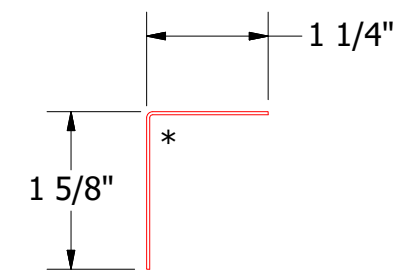


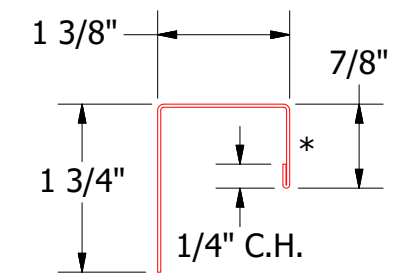
# Horizontal Panel



**BPA681 - Support Z**  
(if conditions apply)




**BPA680 - Angle Trim**



**BPA158 - J Channel**

Note: \* denotes color side.

 <b>ATAS INTERNATIONAL, INC</b> Allentown PA 610-395-8445 Mesa AZ 480-558-7210		TITLE <b>PenumWall Window Sill Flange Detail</b>		
		DWG. NO.	DR	DATE
01	3/23/2021	Added Support Z and color side note.	KRK	9/21/2018
REV. NO.	DATE	DESCRIPTION OF REVISION	BY	APP
		MATERIAL	SH. SIZE	SCALE
			B	X:X