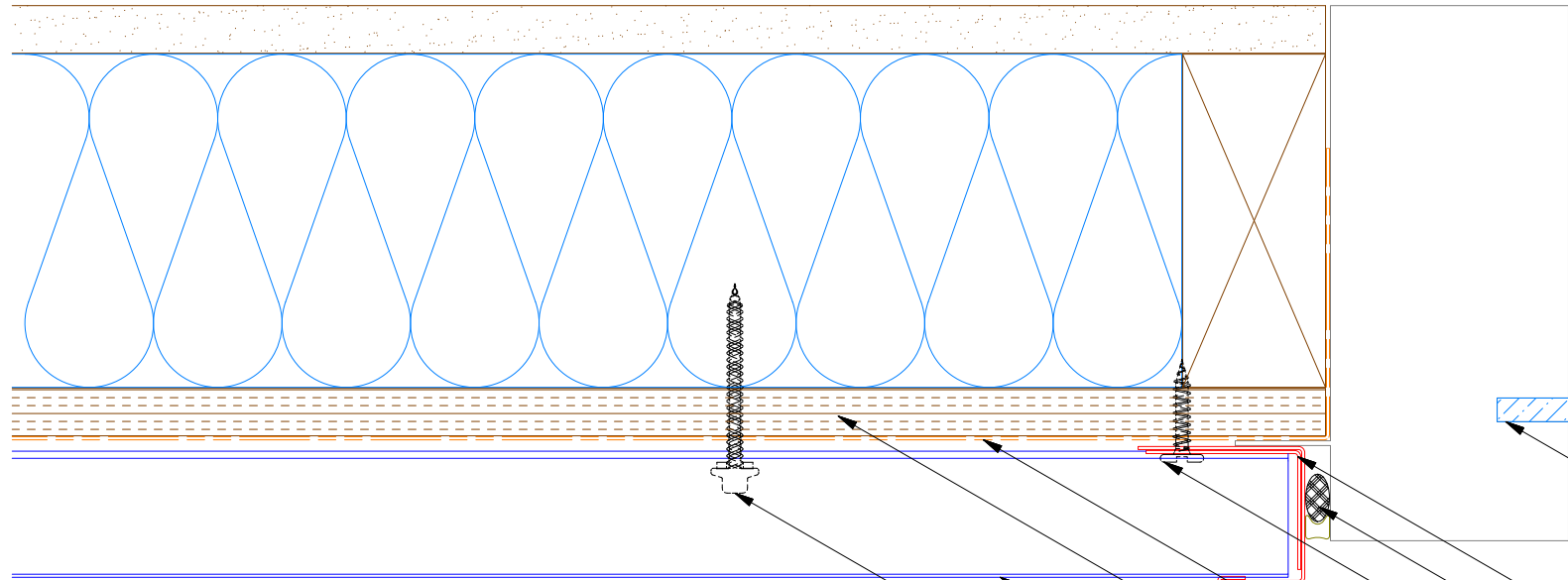
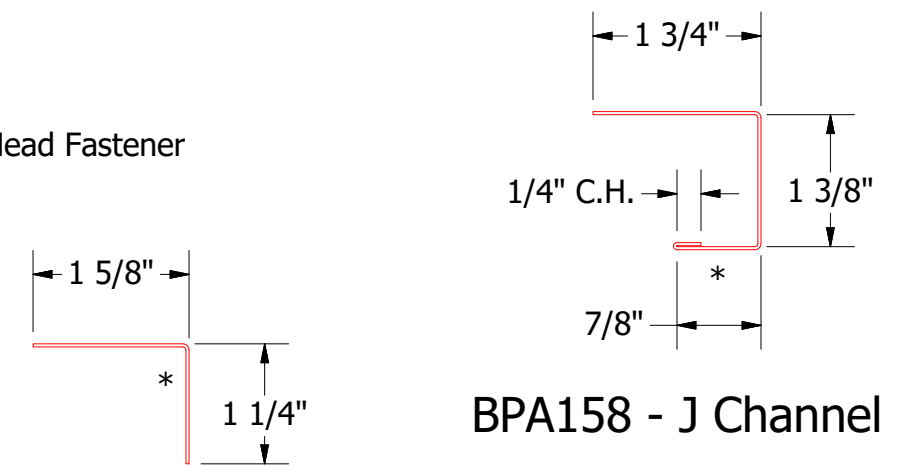
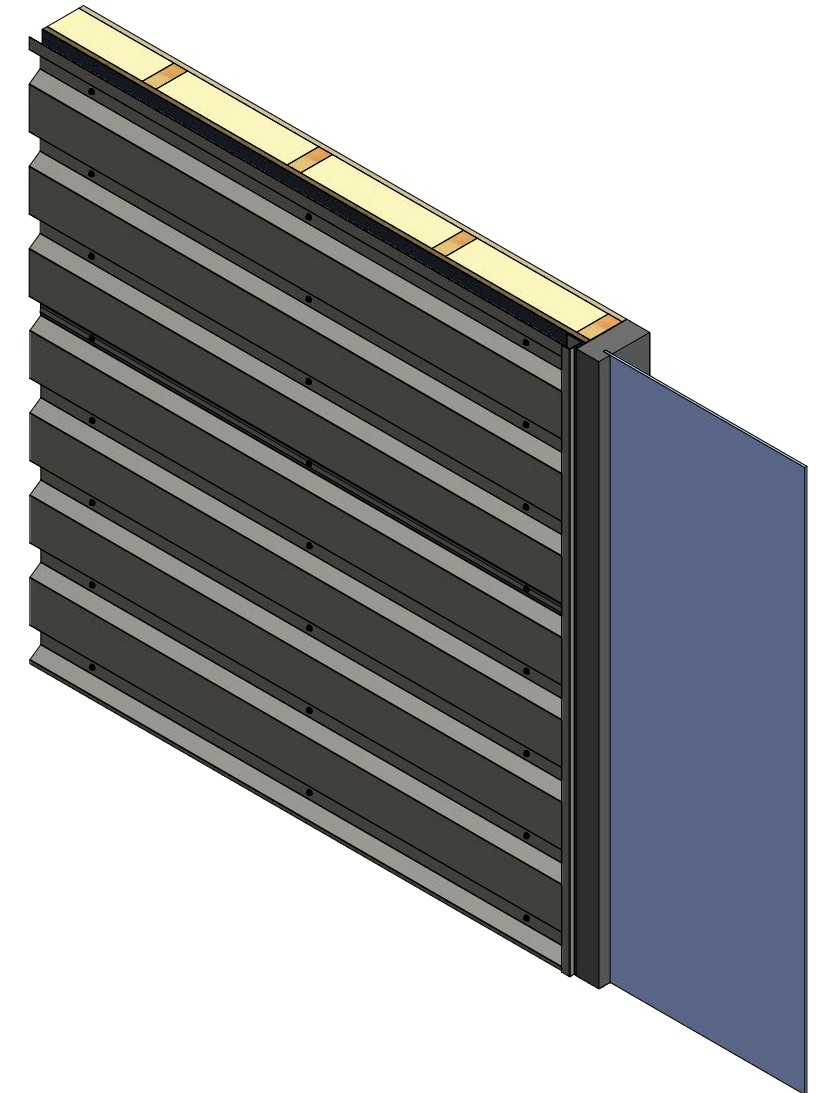


Horizontal Panel



- Window
- Angle Trim
- Backer Rod and Sealant
- #10 x 1" Wafer Head Fastener
- J Channel
- Water and Air Resistive Barrier
- 1/2" Plywood (min.)
- PenumWall Panel
- #10 x 2" Painted Hex Washer Head Fastener



BPA680 - Angle Trim

BPA158 - J Channel

Note: * denotes color side.

| REV. NO. | DATE | DESCRIPTION OF REVISION | BY | APP | TITLE | DR | DATE |
|----------|-----------|-------------------------|-----|-----|------------------------------|----------|-----------|
| 01 | 3/22/2021 | Added color side note. | KRK | | PenumWall Jamb Flange Detail | DR | 7/26/2018 |
| | | | | | | APP | DATE |
| | | | | | | SH. SIZE | B |
| | | | | | | SCALE | X:X |


ATAS INTERNATIONAL, INC
 Allentown PA
 610-395-8445
 Mesa AZ
 480-558-7210