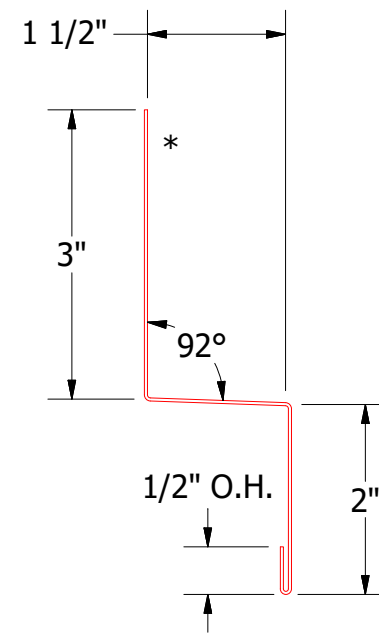
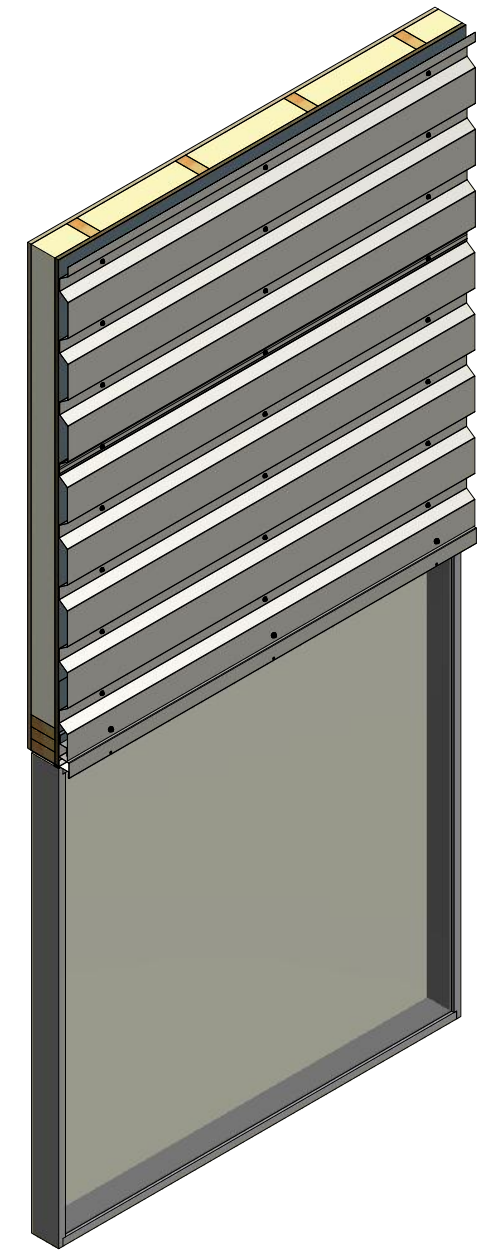
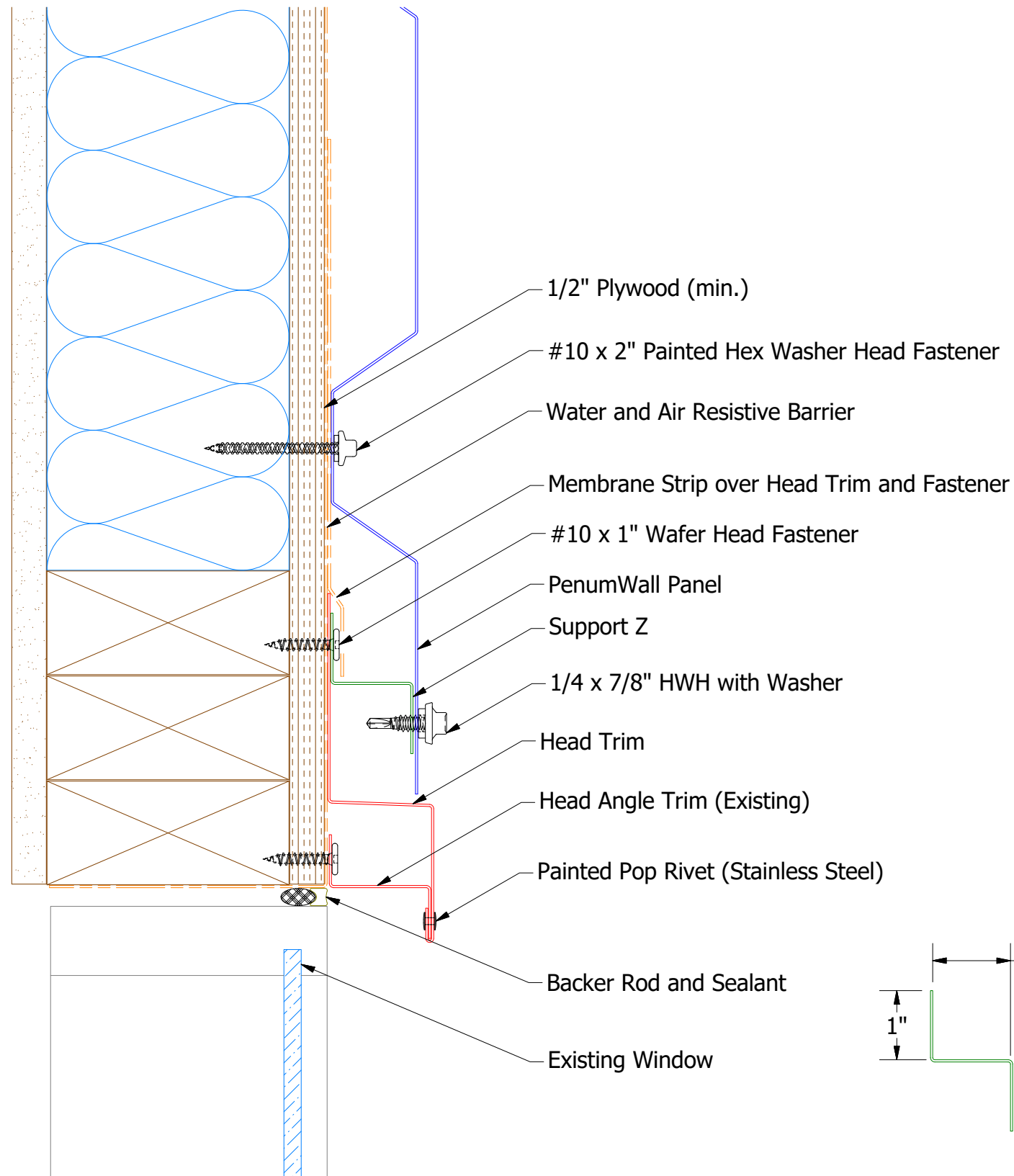
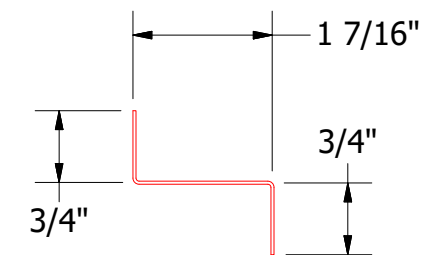


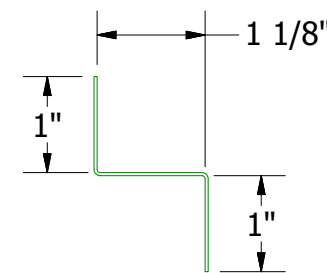
# Horizontal Panel



BPA550 - Head Trim

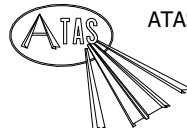


BPA691 - Head Angle Trim (Existing)



BPA681 - Support Z  
(if conditions apply)

Note: \* denotes color side.

 <b>ATAS INTERNATIONAL, INC</b> Allentown PA 610-395-8445 Mesa AZ 480-558-7210		TITLE PenumWall Panel Head Existing Window Detail	
		DWG. NO.	DR DMR DATE 7/11/2016
01	3/18/2021	Added Support Z and color side note.	KRK
REV. NO.	DATE	DESCRIPTION OF REVISION	BY APP
		MATERIAL	APP DAS DATE 7/25/16
		SH. SIZE	B SCALE X:X