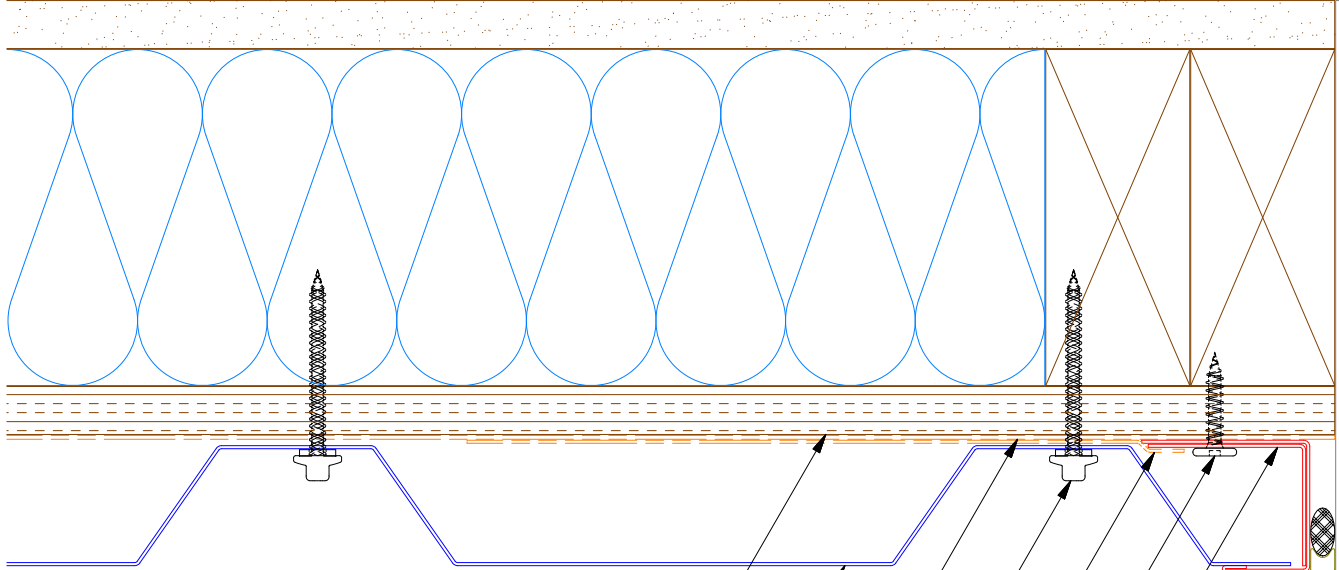
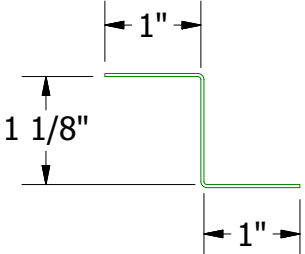
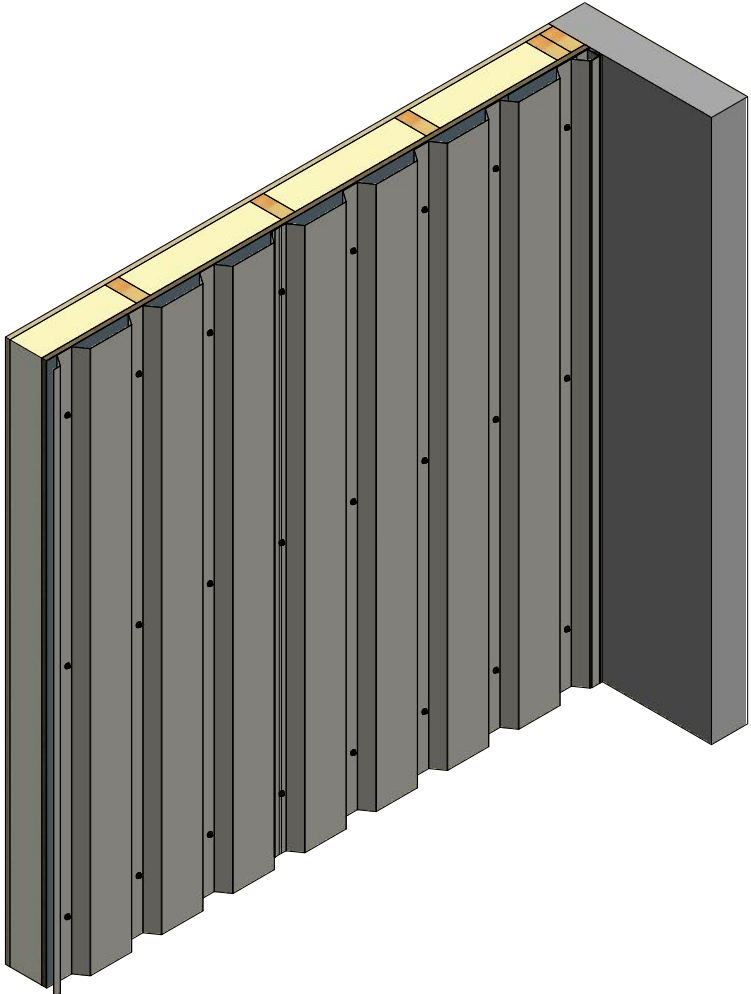


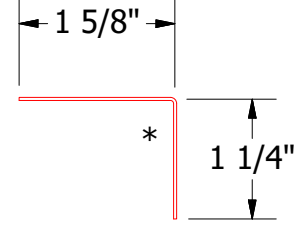
Vertical Panel



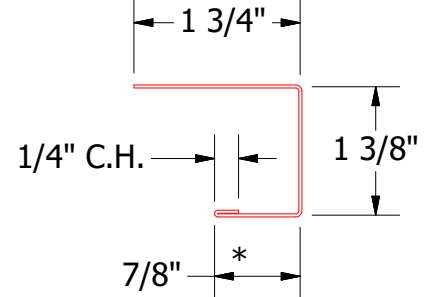
- 1/2" Plywood (min.)
- PenumWall Panel
- Water and Air Resistive Barrier
- #10 x 2" Painted Hex Washer Head Screw with Washer
- Membrane Strip over J Channel and Angle Trim
- #10 x 1" Wafer Head Screw
- Angle Trim
- J Channel
- Backer Rod and Sealant



BPA681 - Support Z
(if conditions apply)



BPA680 - Angle Trim



BPA138 - J Channel

Note: * denotes color side.

REV. NO.		DATE	DESCRIPTION OF REVISION	BY	APP	TITLE	
01	3/16/2021		Added Support Z Trim and color side note.	KRK		PenumWall Endwall Detail	
						DWG. NO.	DR
							KRK
						MATERIAL	DATE
							1/29/2016
						SH. SIZE	SCALE
						B	X:X

ATAS ATAS INTERNATIONAL, INC
 Allentown PA
 610-395-8445
 Mesa AZ
 480-558-7210