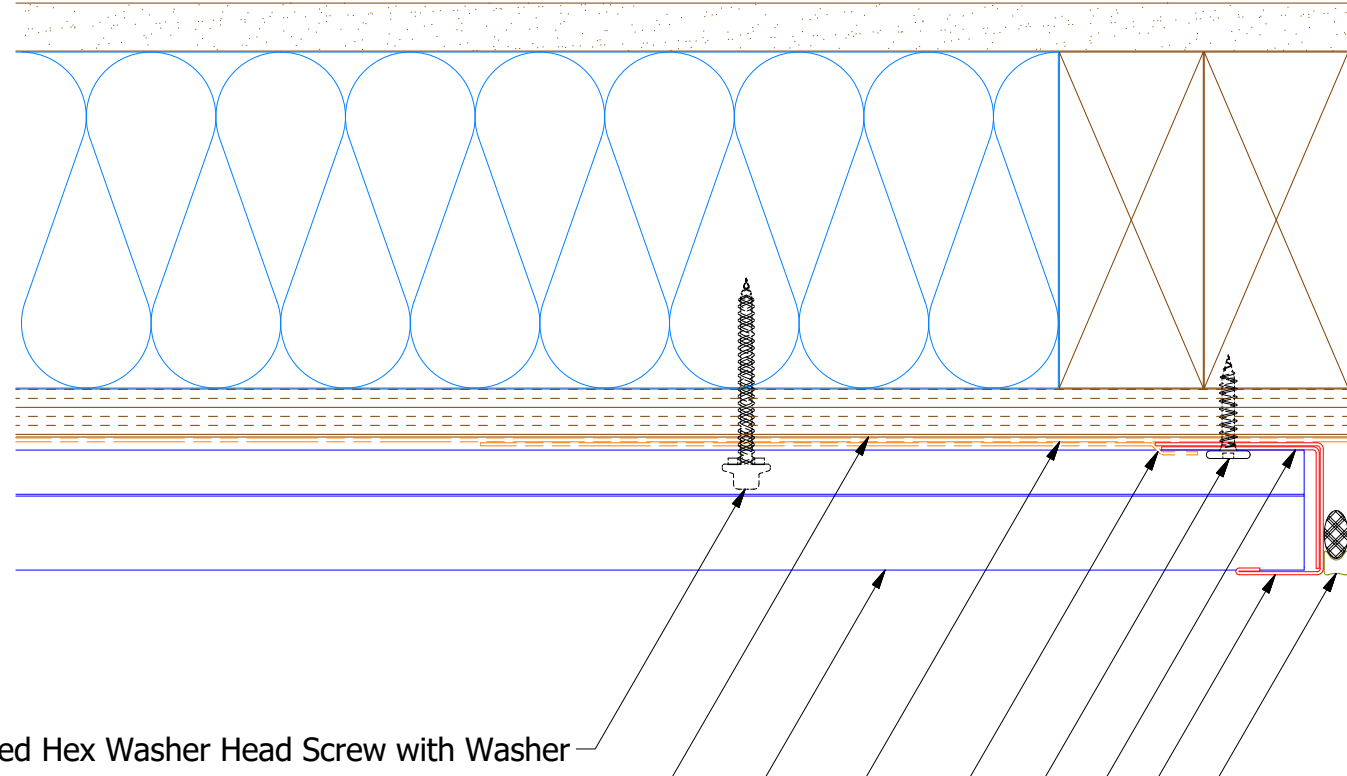
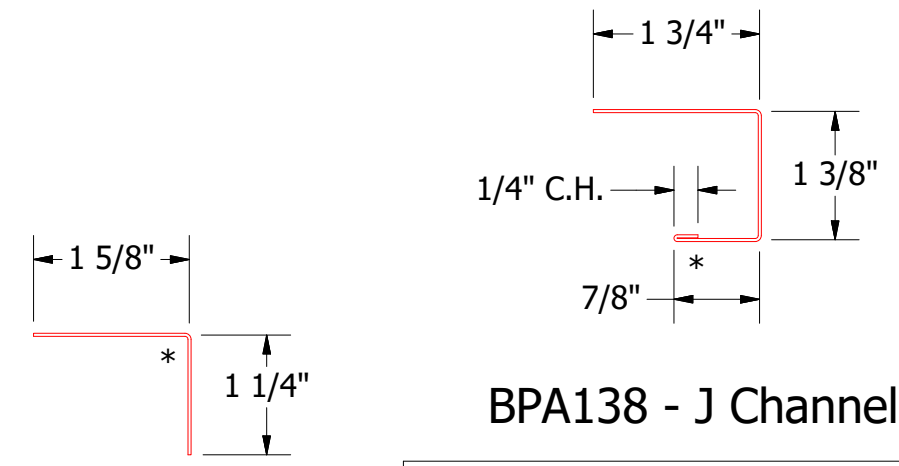
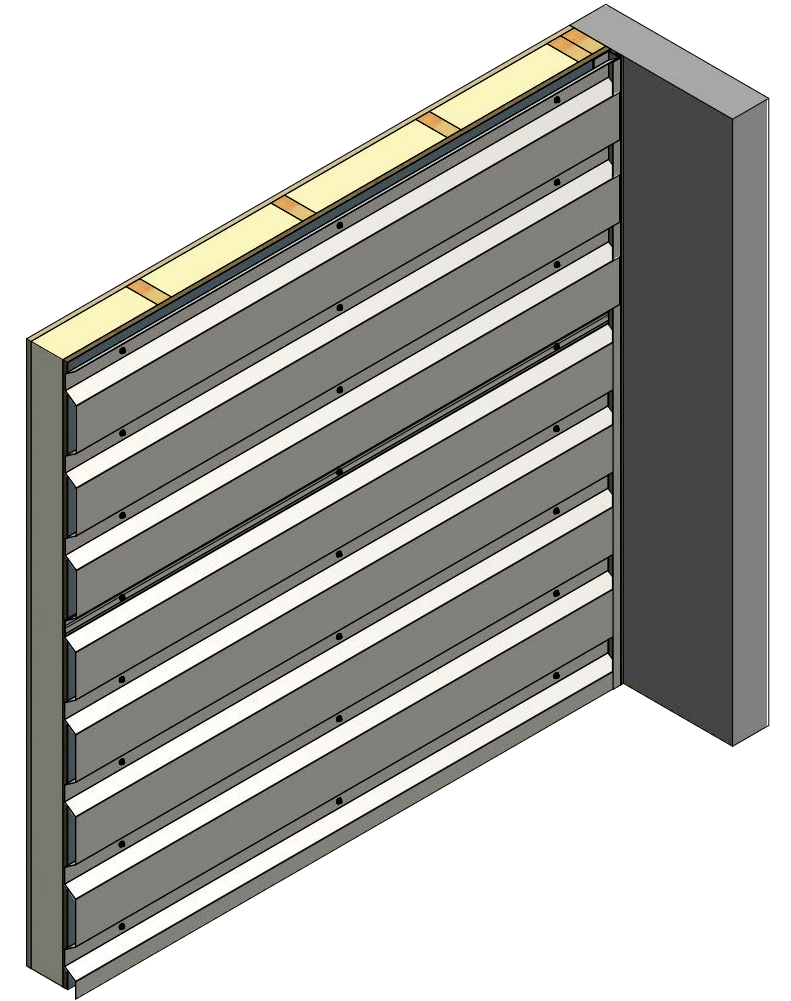


# Horizontal Panel



- #10 x 2" Painted Hex Washer Head Screw with Washer
- 1/2" Plywood (min.)
- PenumWall Panel
- Water and Air Resistive Barrier
- Membrane Strip over J Channel and Angle Trim
- #10 x 1" Wafer Head Screw
- Angle Trim
- J Channel
- Backer Rod and Sealant



BPA680 - Angle Trim

BPA138 - J Channel

**ATAS** ATAS INTERNATIONAL, INC  
 Allentown PA  
 610-395-8445  
 Mesa AZ  
 480-558-7210

TITLE  
**PenumWall Endwall Detail**

01	3/16/2021	Added color side note.	KRK	DR	KRK	DATE	1/29/2016
REV. NO.	DATE	DESCRIPTION OF REVISION	BY	APP	DAS	DATE	7/16/20
					SH. SIZE	B	SCALE
							X:X

Note: \* denotes color side.