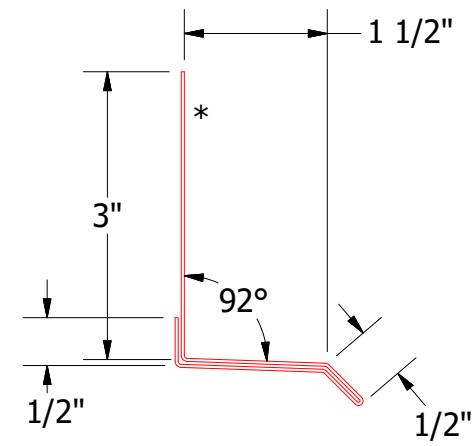
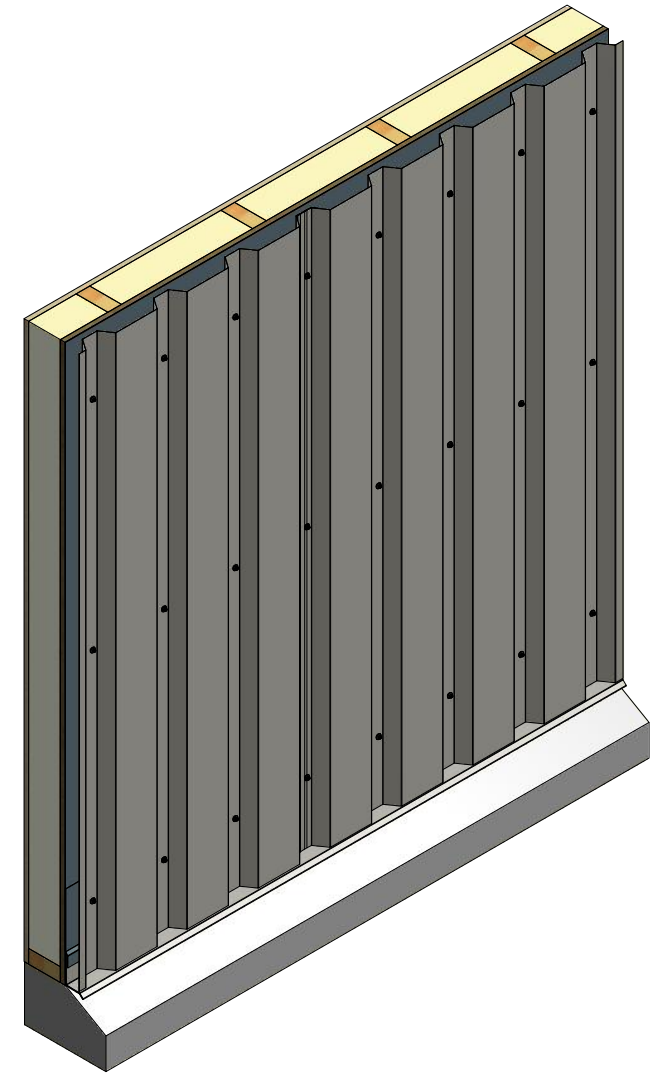
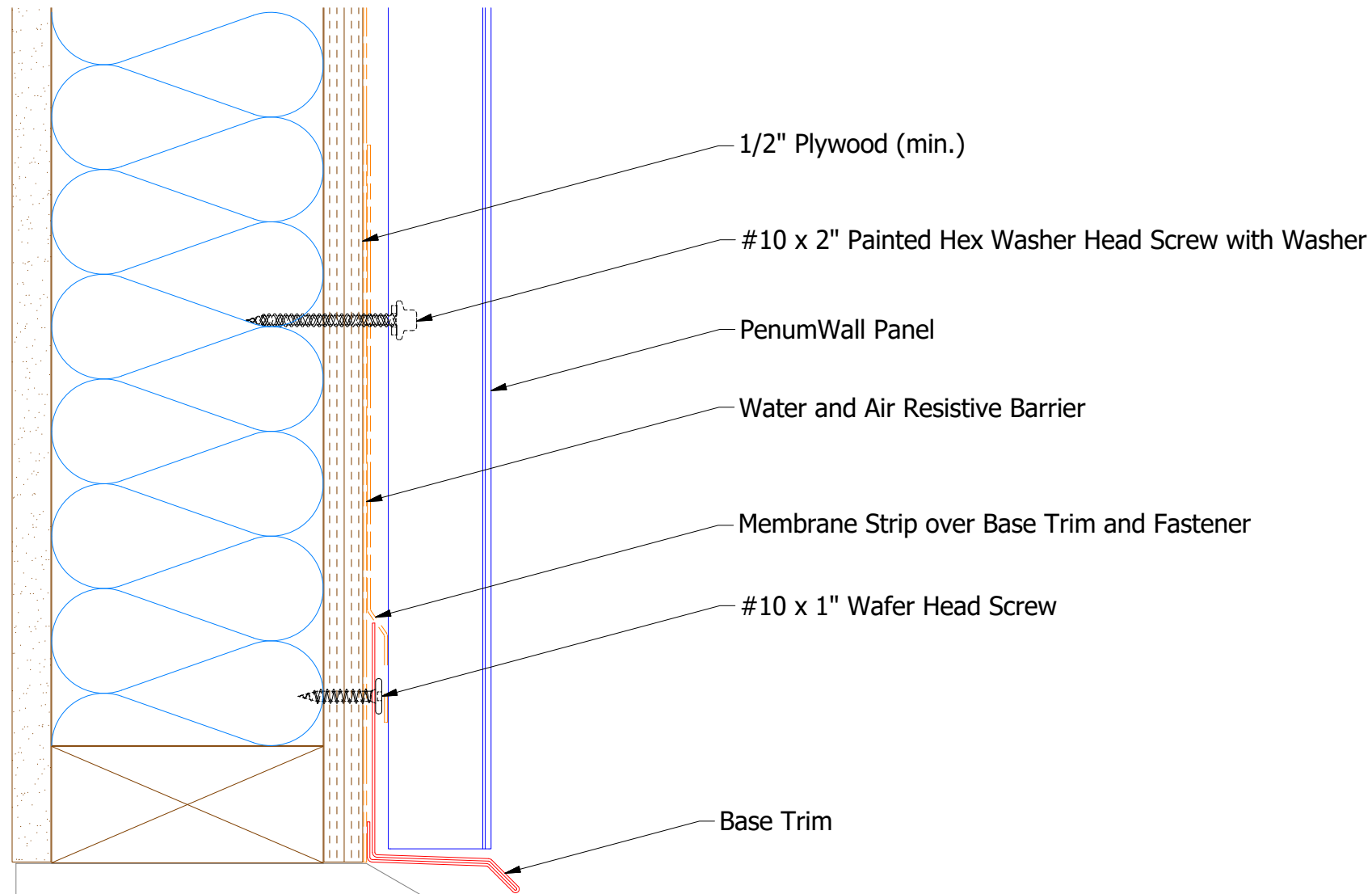


**ATAS INTERNATIONAL, INC**  
 Allentown PA  
 610-395-8445  
 Mesa AZ  
 480-558-7210

TITLE **PenumWall Panel Profile Detail**

REV. NO.	DATE	DESCRIPTION OF REVISION	BY	APP	DWG. NO.	DR	KRK	DATE	1/15/2016
						APP	DAS	DATE	7/21/16
					MATERIAL	SH. SIZE	B	SCALE	X:X

# Vertical Panel



**BPA661 - Base Trim**

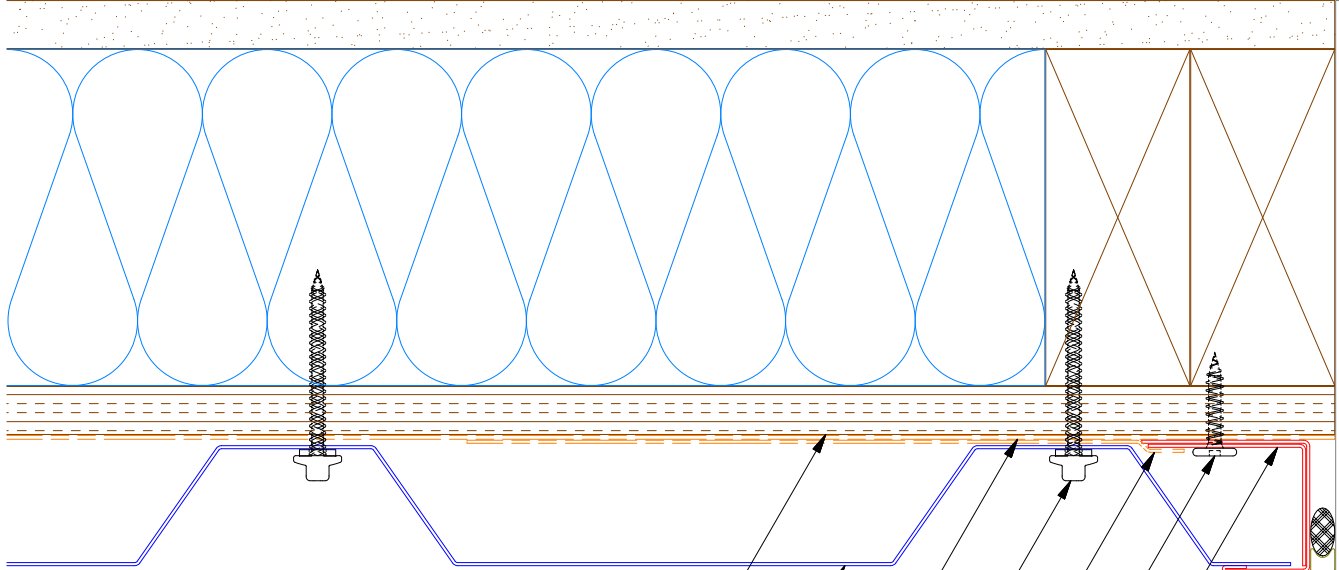
**ATAS** ATAS INTERNATIONAL, INC  
 Allentown PA  
 610-395-8445  
 Mesa AZ  
 480-558-7210

TITLE **PenumWall Base Detail**

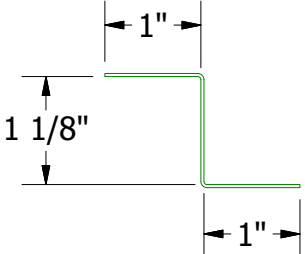
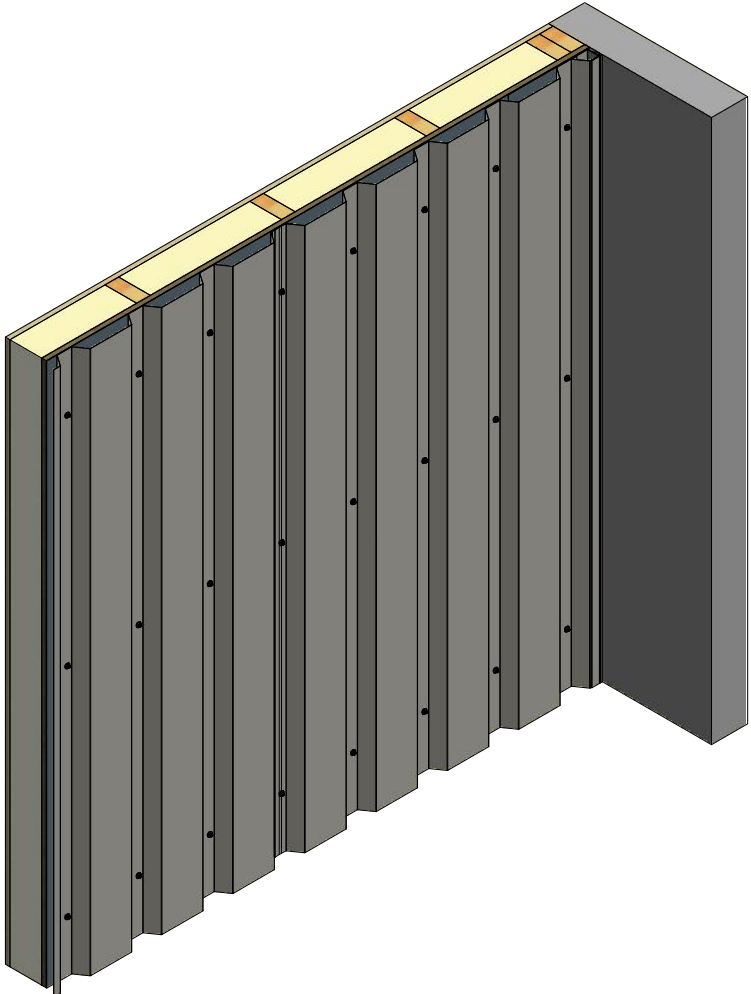
01	3/17/2021	Added color side note.	KRK	DR	KRK	DATE	1/29/2016
REV. NO.	DATE	DESCRIPTION OF REVISION	BY	APP	MATERIAL	SH. SIZE	SCALE
						B	X:X

Note: \* denotes color side.

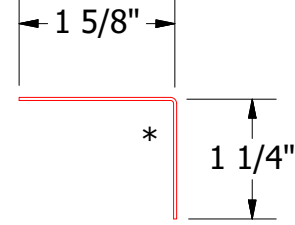
# Vertical Panel



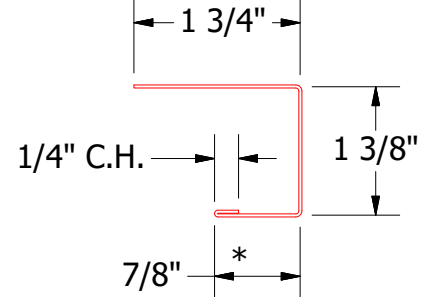
- 1/2" Plywood (min.)
- PenumWall Panel
- Water and Air Resistive Barrier
- #10 x 2" Painted Hex Washer Head Screw with Washer
- Membrane Strip over J Channel and Angle Trim
- #10 x 1" Wafer Head Screw
- Angle Trim
- J Channel
- Backer Rod and Sealant



**BPA681 - Support Z**  
(if conditions apply)

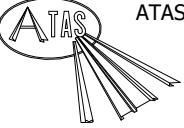


**BPA680 - Angle Trim**



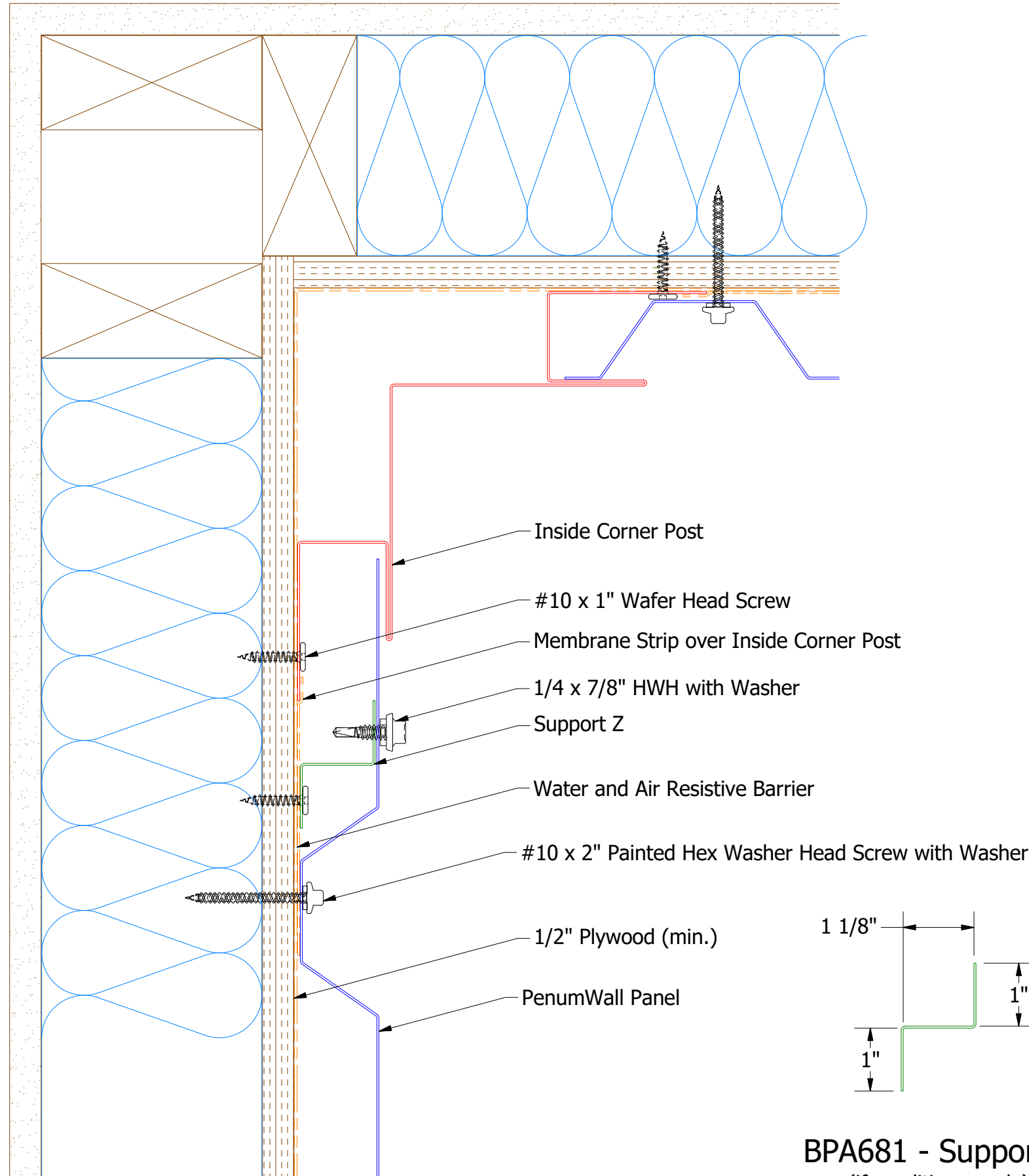
**BPA138 - J Channel**

Note: \* denotes color side.

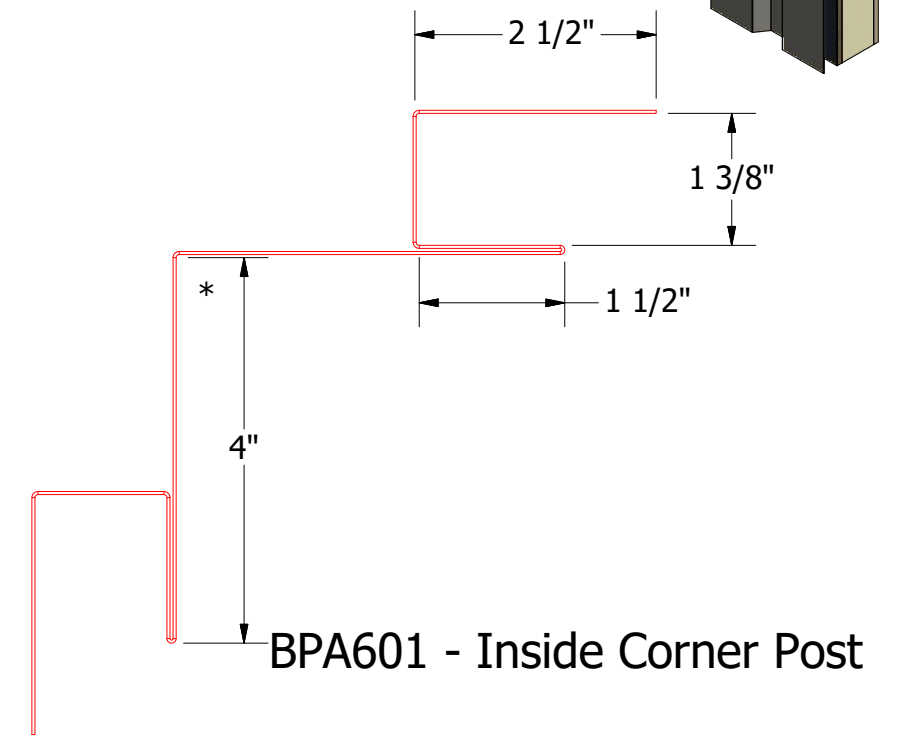
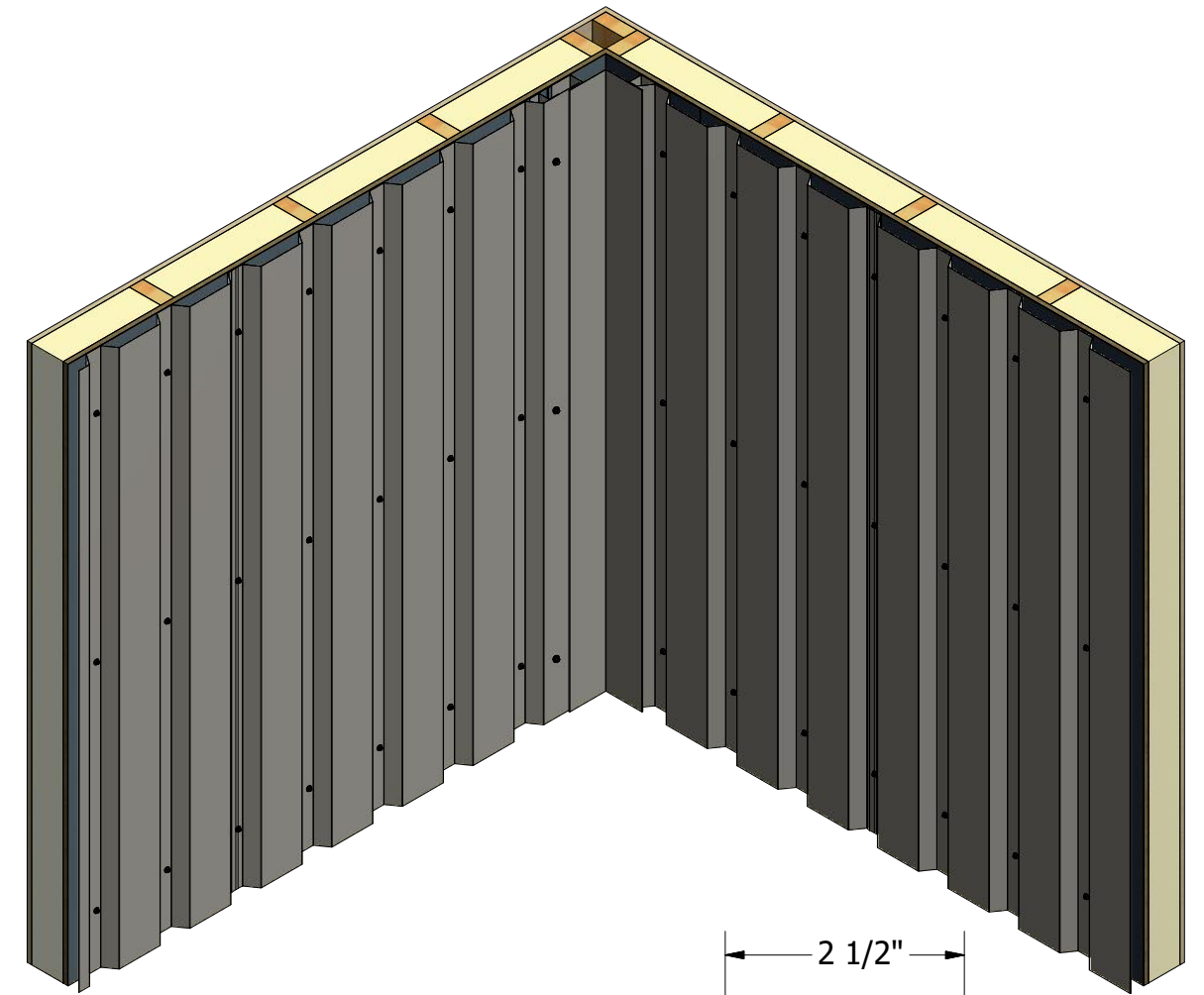
 <b>ATAS INTERNATIONAL, INC</b> Allentown PA 610-395-8445 Mesa AZ 480-558-7210	
TITLE <b>PenumWall Endwall Detail</b>	
DWG. NO.	DR KRK DATE 1/29/2016
REV. NO.	APP DAS DATE 7/16/20
DATE	SH. SIZE B SCALE X:X

01	3/16/2021	Added Support Z Trim and color side note.	KRK
REV. NO.	DATE	DESCRIPTION OF REVISION	BY APP

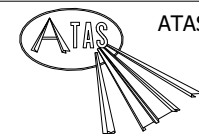
# Vertical Panel



**BPA681 - Support Z**  
(if conditions apply)



Note:\* denotes color side.

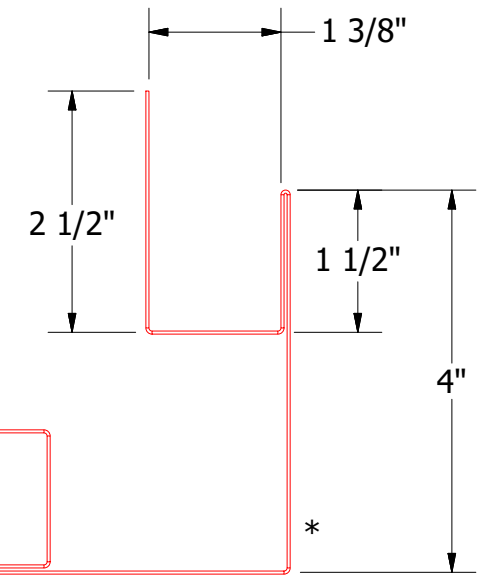
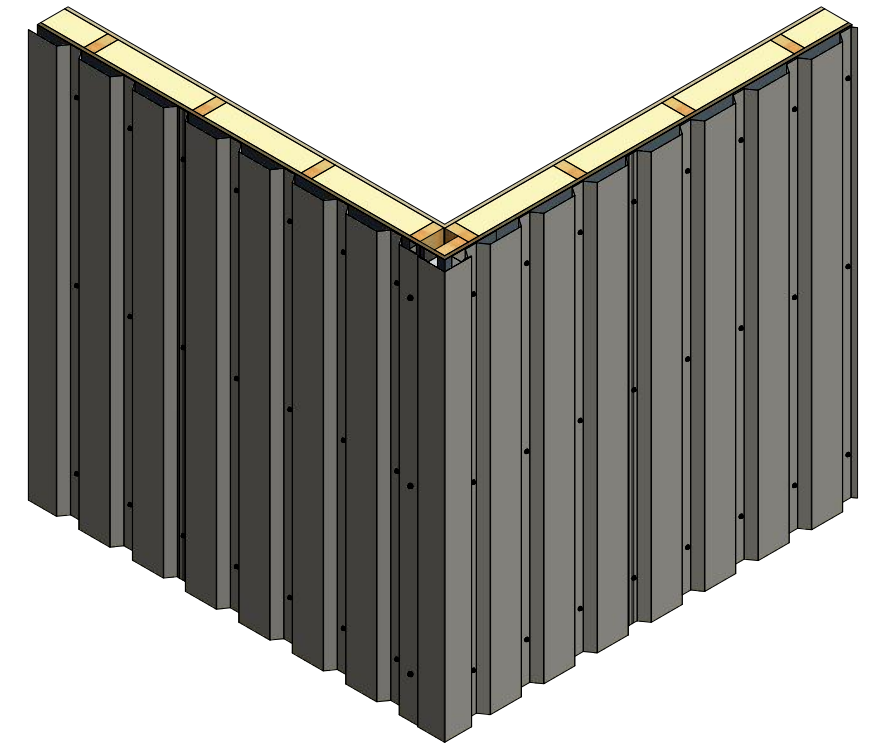
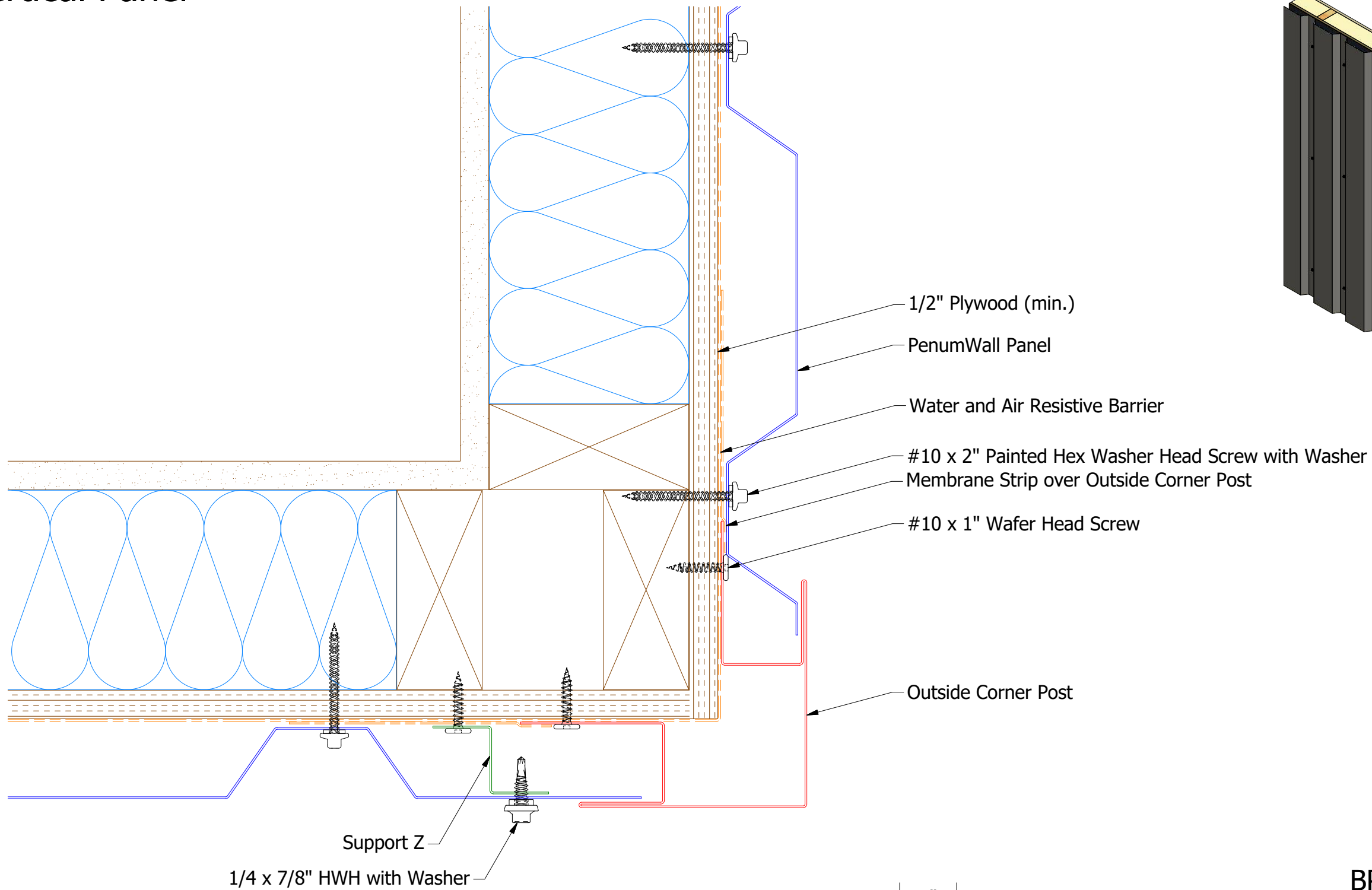


**ATAS INTERNATIONAL, INC**  
 Allentown PA  
 610-395-8445  
 Mesa AZ  
 480-558-7210

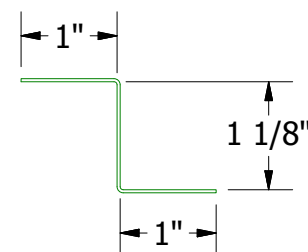
TITLE **PenumWall Inside Corner Detail**

01	3/18/2021	Added Support Z and color side note.	KRK	DR	KRK	DATE	1/15/2016
REV. NO.	DATE	DESCRIPTION OF REVISION	BY	APP	DAS	DATE	7/20/16
					SH. SIZE	B	SCALE
							X:X

# Vertical Panel

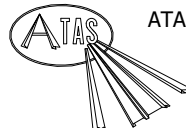


**BPA602 - Outside Corner Post**



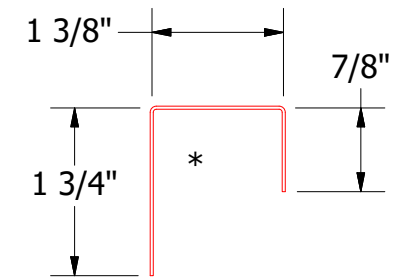
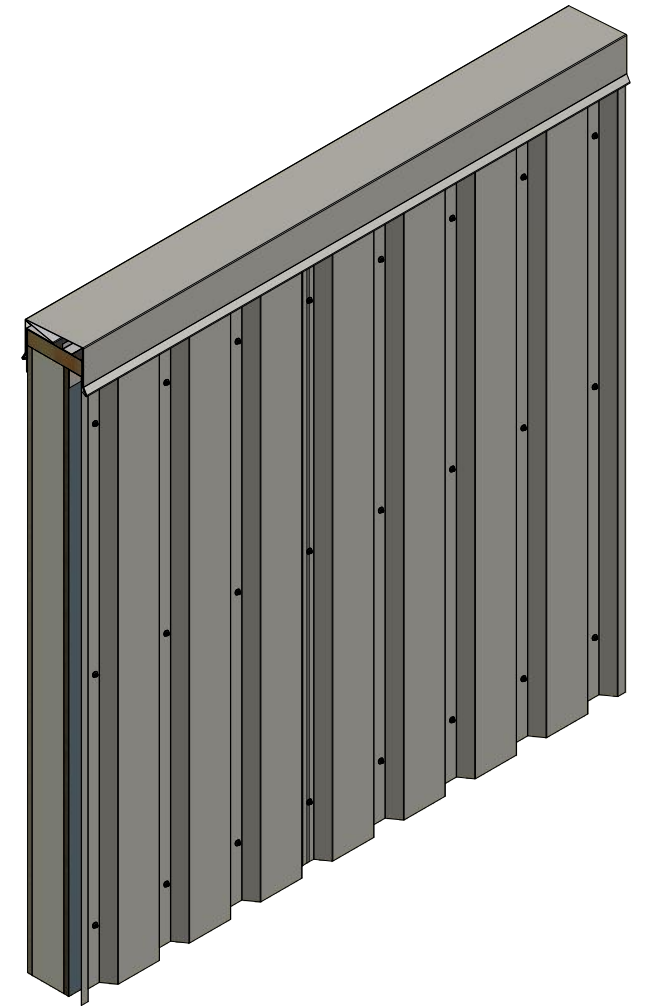
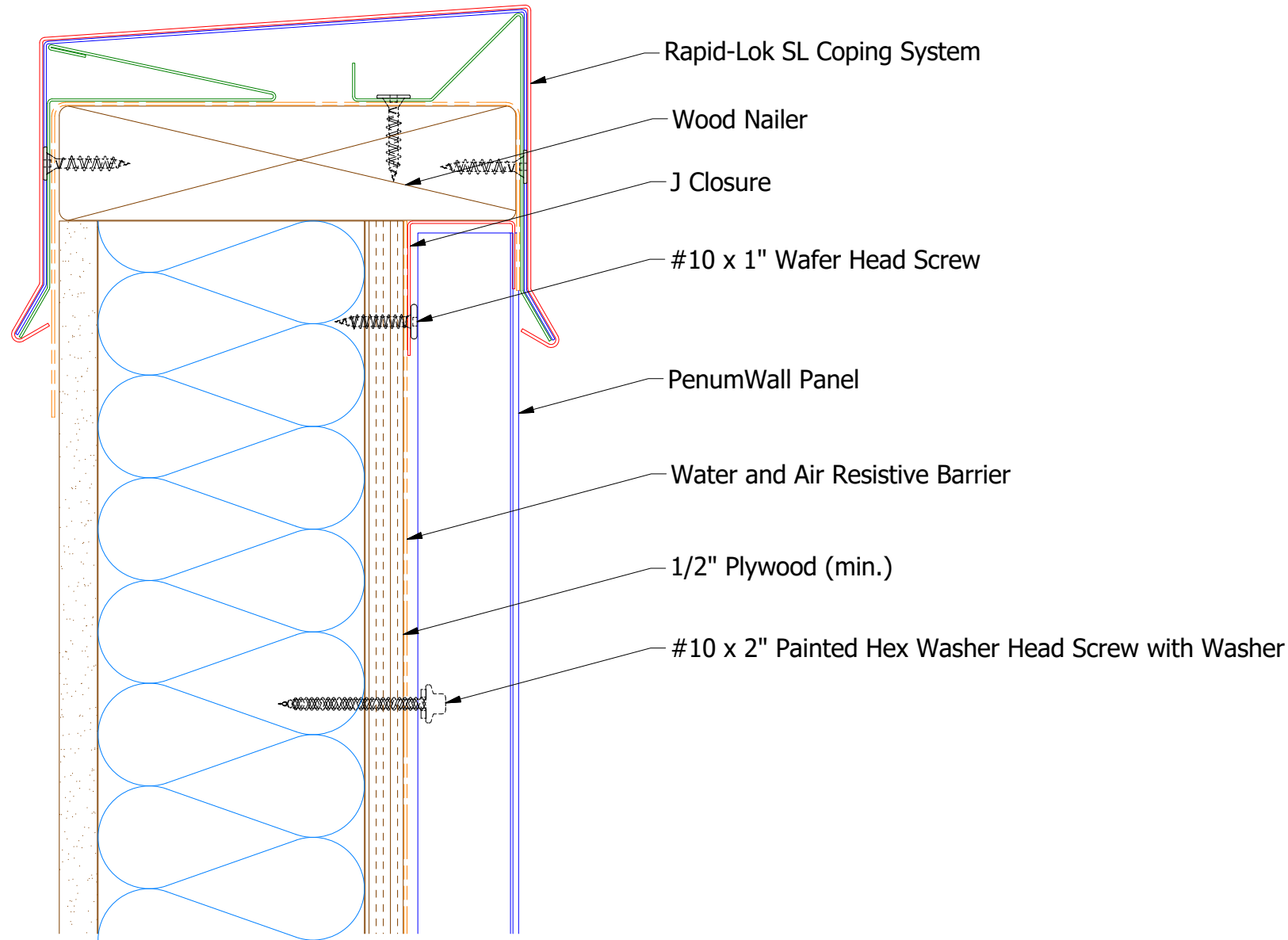
**BPA681 - Support Z**  
(if conditions apply)

Note: \* denotes color side.

 <b>ATAS INTERNATIONAL, INC</b> Allentown PA 610-395-8445 Mesa AZ 480-558-7210		TITLE	
		PenumWall Outside Corner Detail	
DWG. NO.	DR	DATE	
	KRK	1/15/2016	
REV. NO.	APP	DATE	
01	DAS	7/20/16	
	SH. SIZE	SCALE	
	B	X:X	


REV. NO.	DATE	DESCRIPTION OF REVISION	BY	APP
01	3/22/2021	Added Support Z and color side note.	KRK	

# Vertical Panel

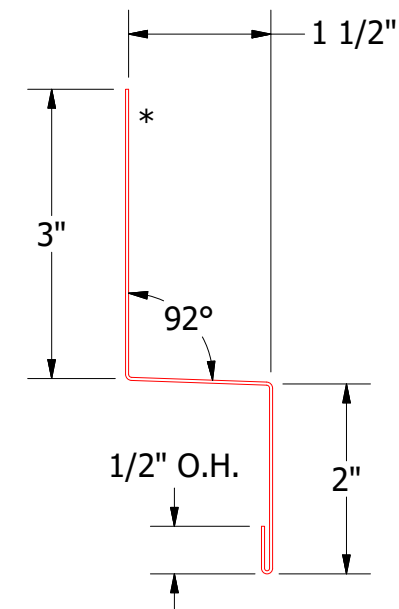
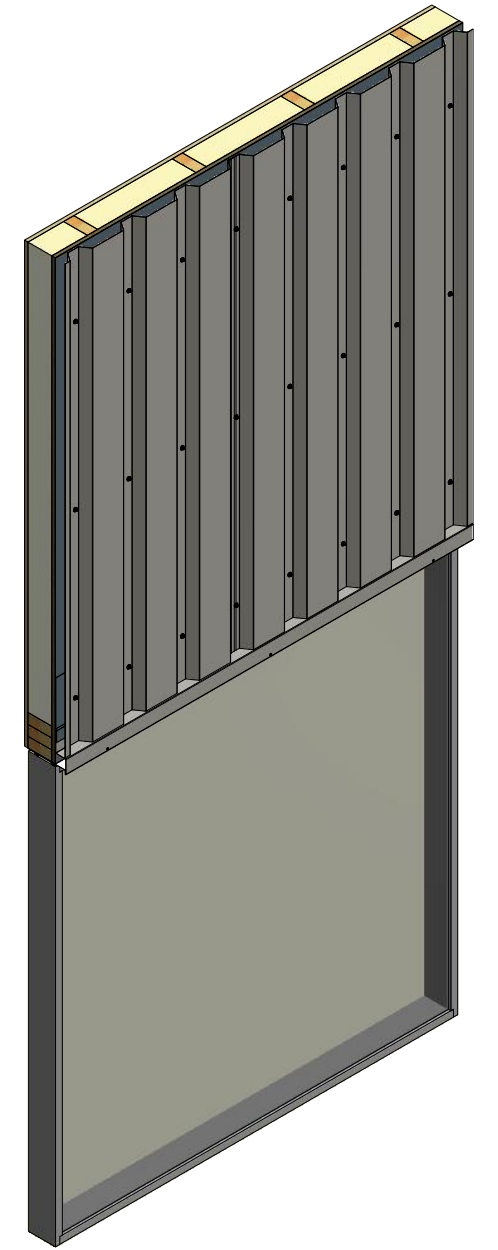
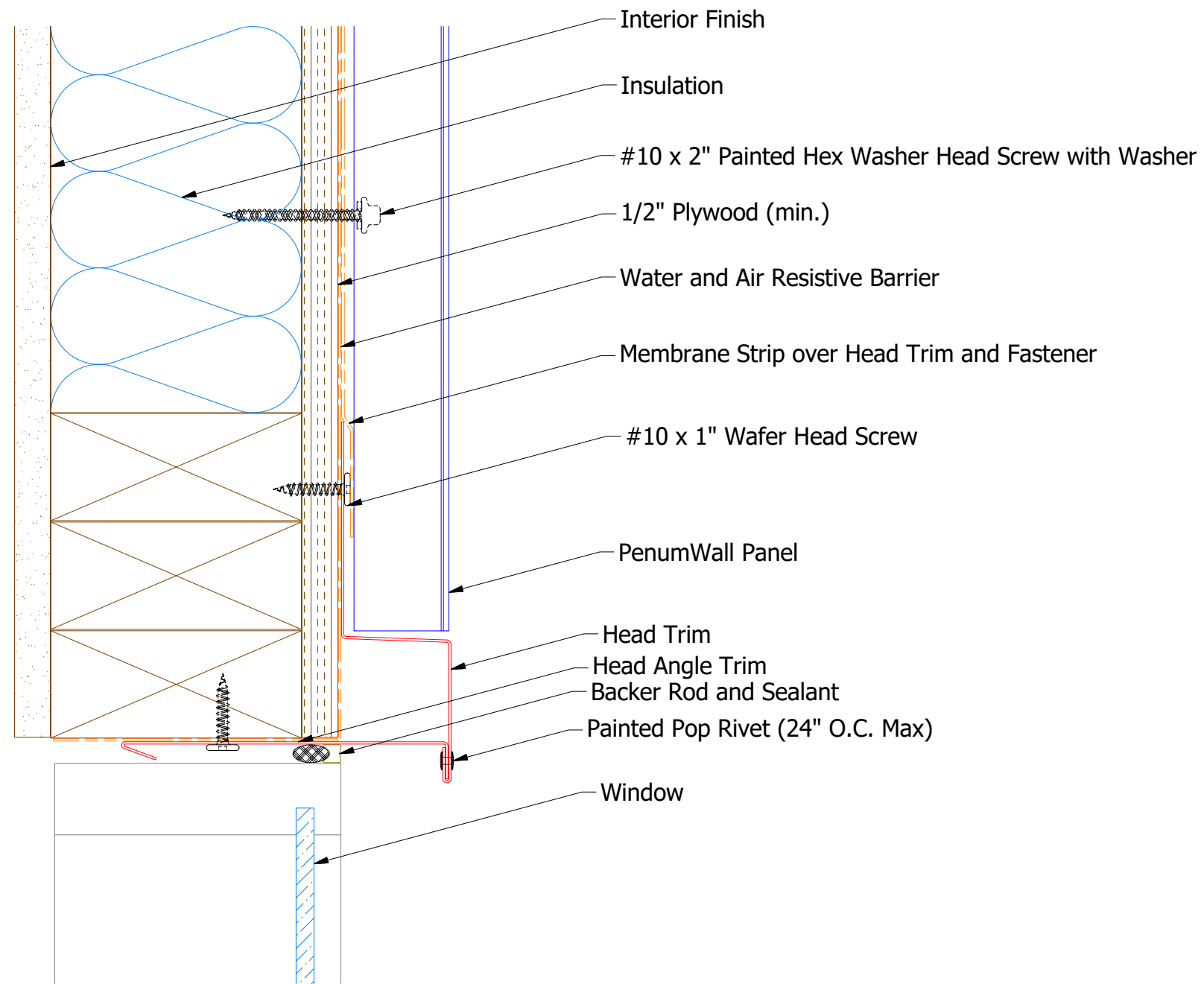


**BWA270 - J Closure**

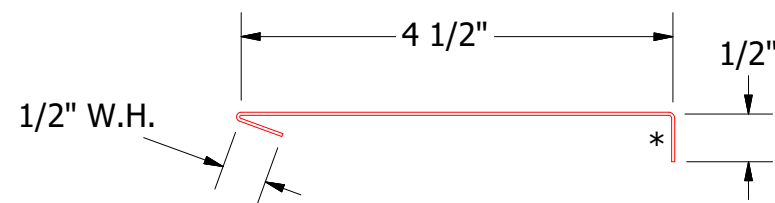
Note: \* denotes color side.

				 <b>ATAS INTERNATIONAL, INC</b> Allentown PA 610-395-8445 Mesa AZ 480-558-7210	
TITLE				PenumWall Top of Wall Detail	
DWG. NO.			DR	KRK	DATE
REV. NO.			APP	DAS	DATE
DATE			SH. SIZE	B	SCALE
DESCRIPTION OF REVISION			BY	APP	X:X
01	3/23/2021	Added color side note and updated Coping.	KRK		12/17/2015
					7/16/20

# Vertical Panel

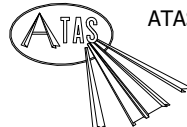


**BPA550 - Head Trim**



**BPA690 - Head Angle Trim**

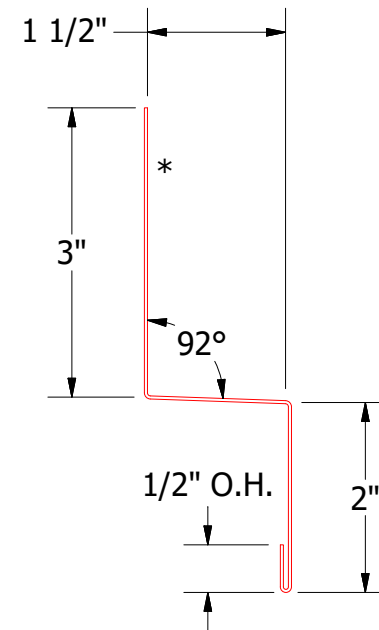
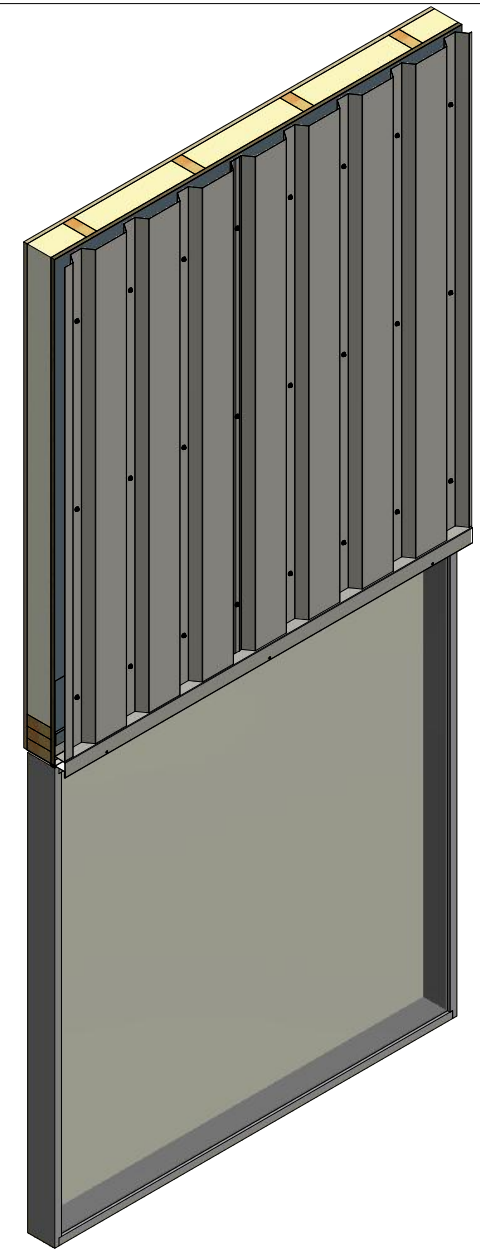
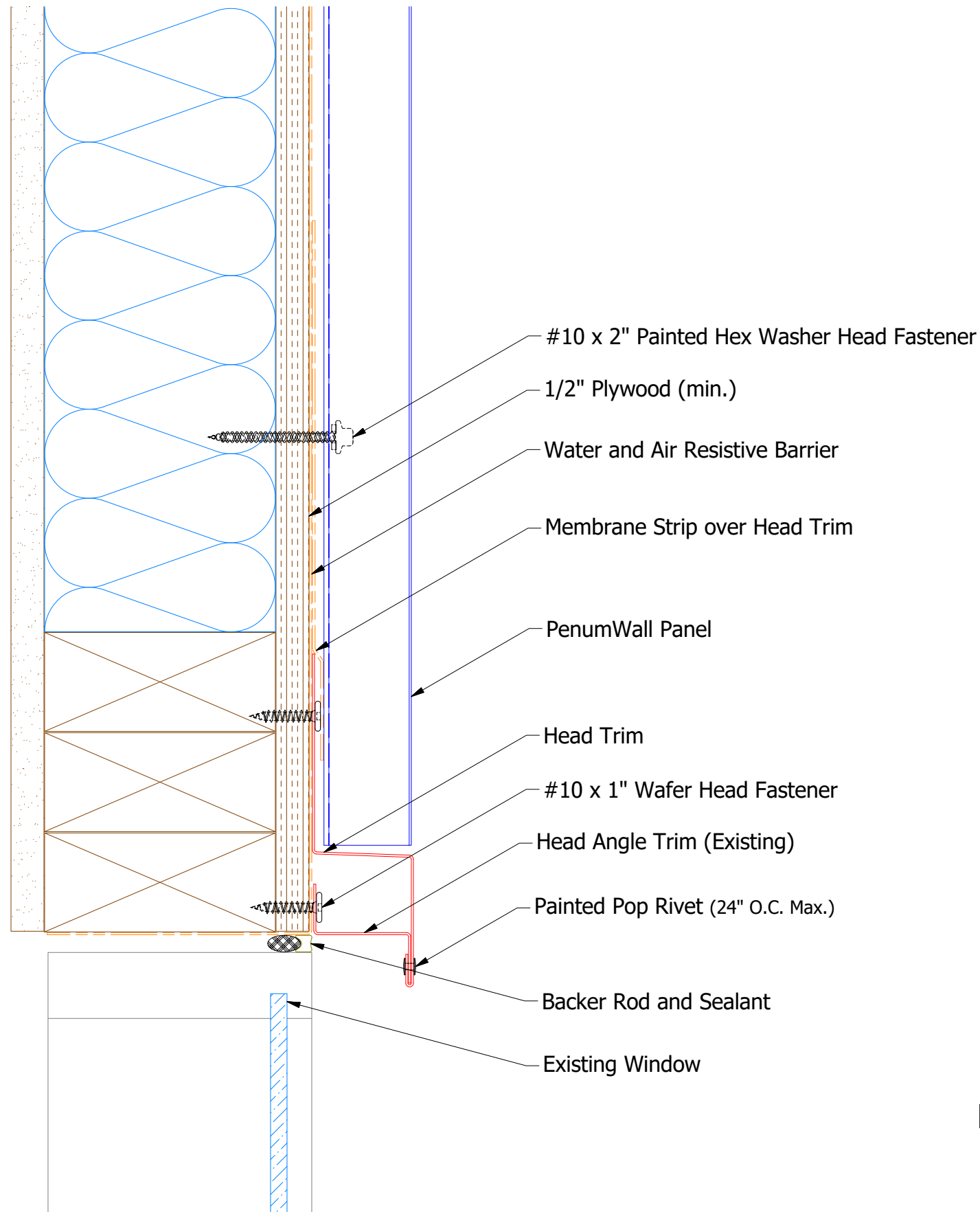
Note: \* denotes color side.

 <b>ATAS INTERNATIONAL, INC</b> Allentown PA 610-395-8445 Mesa AZ 480-558-7210		TITLE	
		<b>PenumWall Head Detail</b>	
DWG. NO.	DR	KRK	DATE
01	3/17/2021	APP	1/29/2016
REV. NO.	DATE	DESCRIPTION OF REVISION	BY
01	3/17/2021	Added color side note.	KRK
MATERIAL		APP	DATE
		DAS	7/20/16
SH. SIZE		B	SCALE
			X:X

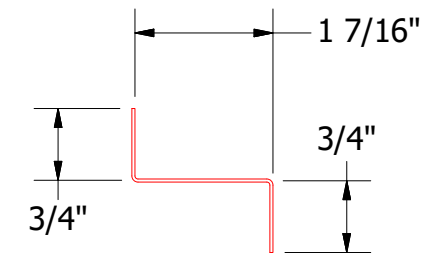
REV. NO.	DATE	DESCRIPTION OF REVISION	BY	APP
01	3/17/2021	Added color side note.	KRK	



# Vertical Panel



BPA550 - Head Trim



BPA691 - Head Angle Trim (Existing)

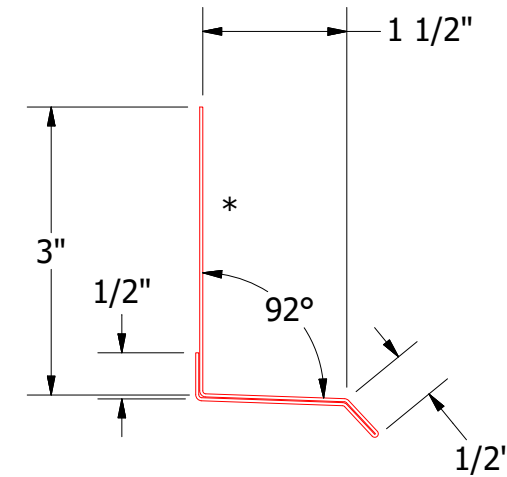
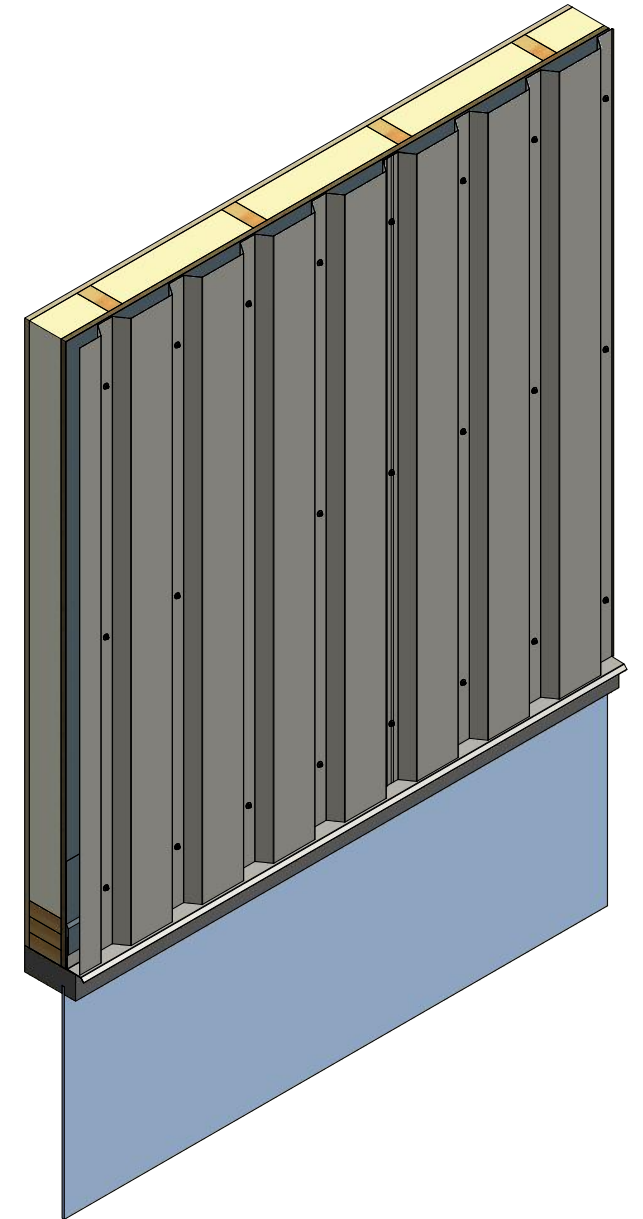
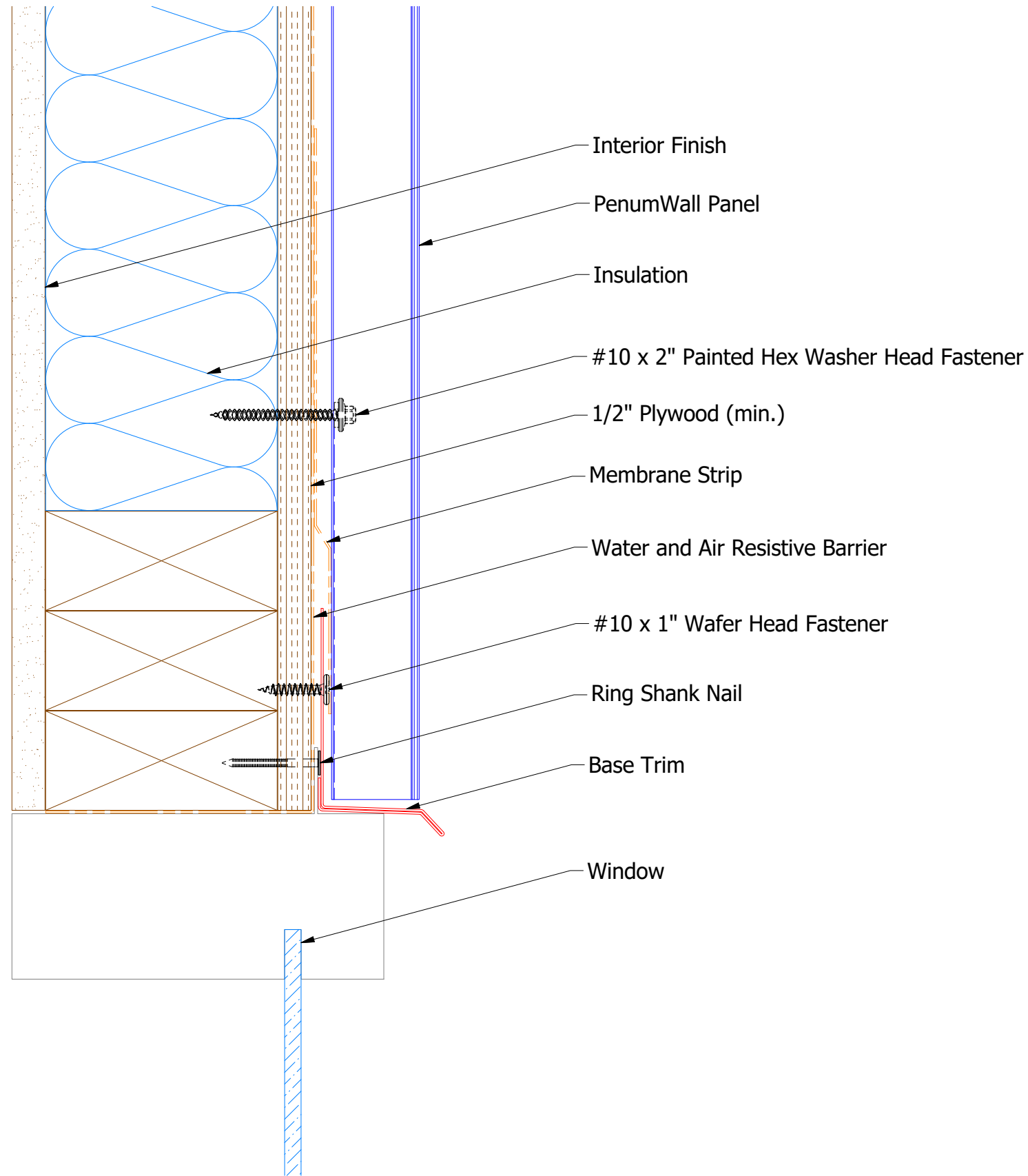
Note: \* denotes color side.

		<b>ATAS INTERNATIONAL, INC</b> Allentown PA 610-395-8445 Mesa AZ 480-558-7210	
		TITLE <b>PenumWall Panel Head Existing Window Detail</b>	
DWG. NO.	DR	DATE	7/11/2016
APP	DMR	DATE	7/25/16
MATERIAL	DAS	SCALE	X:X
SH. SIZE	B		

REV. NO.	DATE	DESCRIPTION OF REVISION	BY	APP
01	3/18/2021	Added color side note.	KRK	



# Vertical Panel



BPA661 - Base Trim

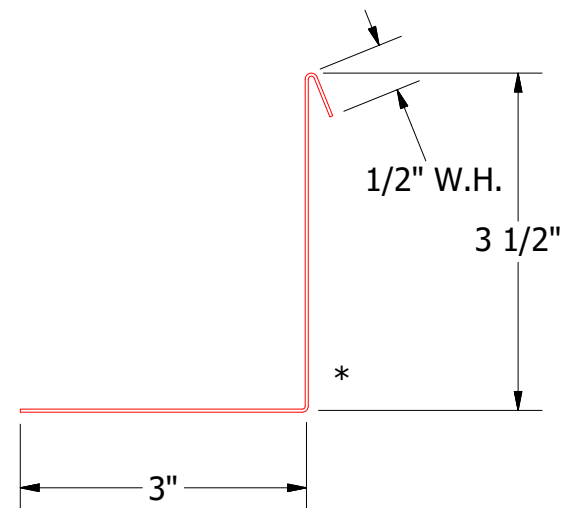
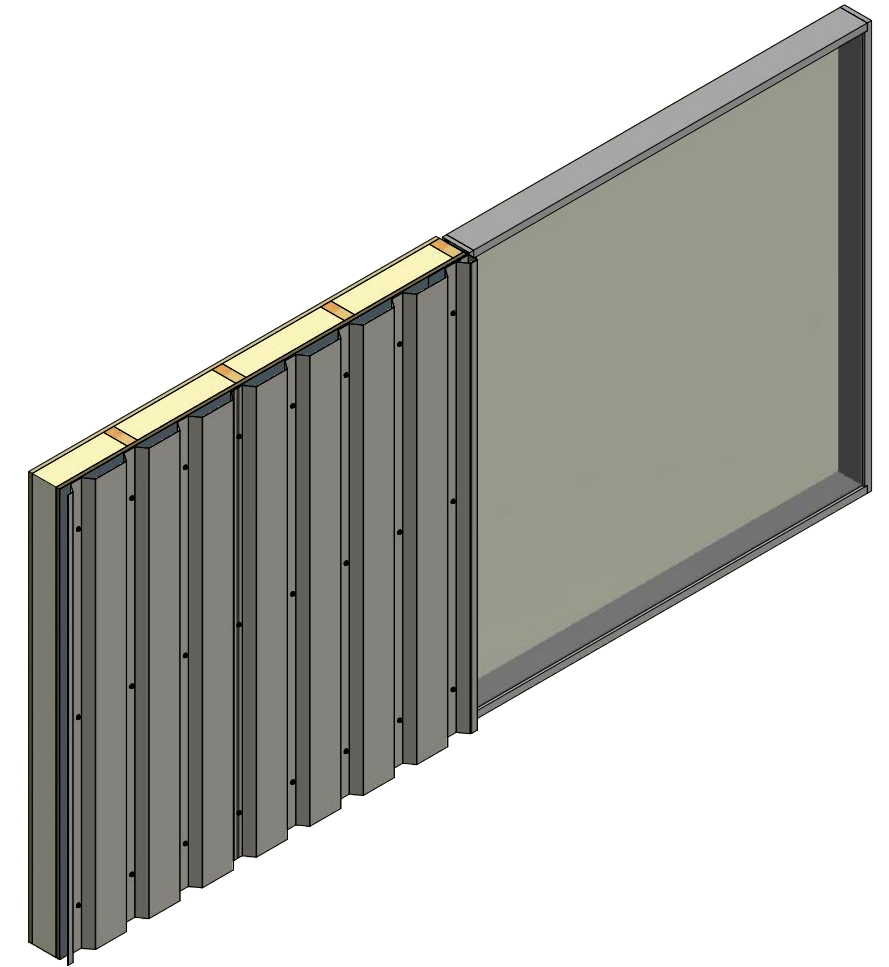
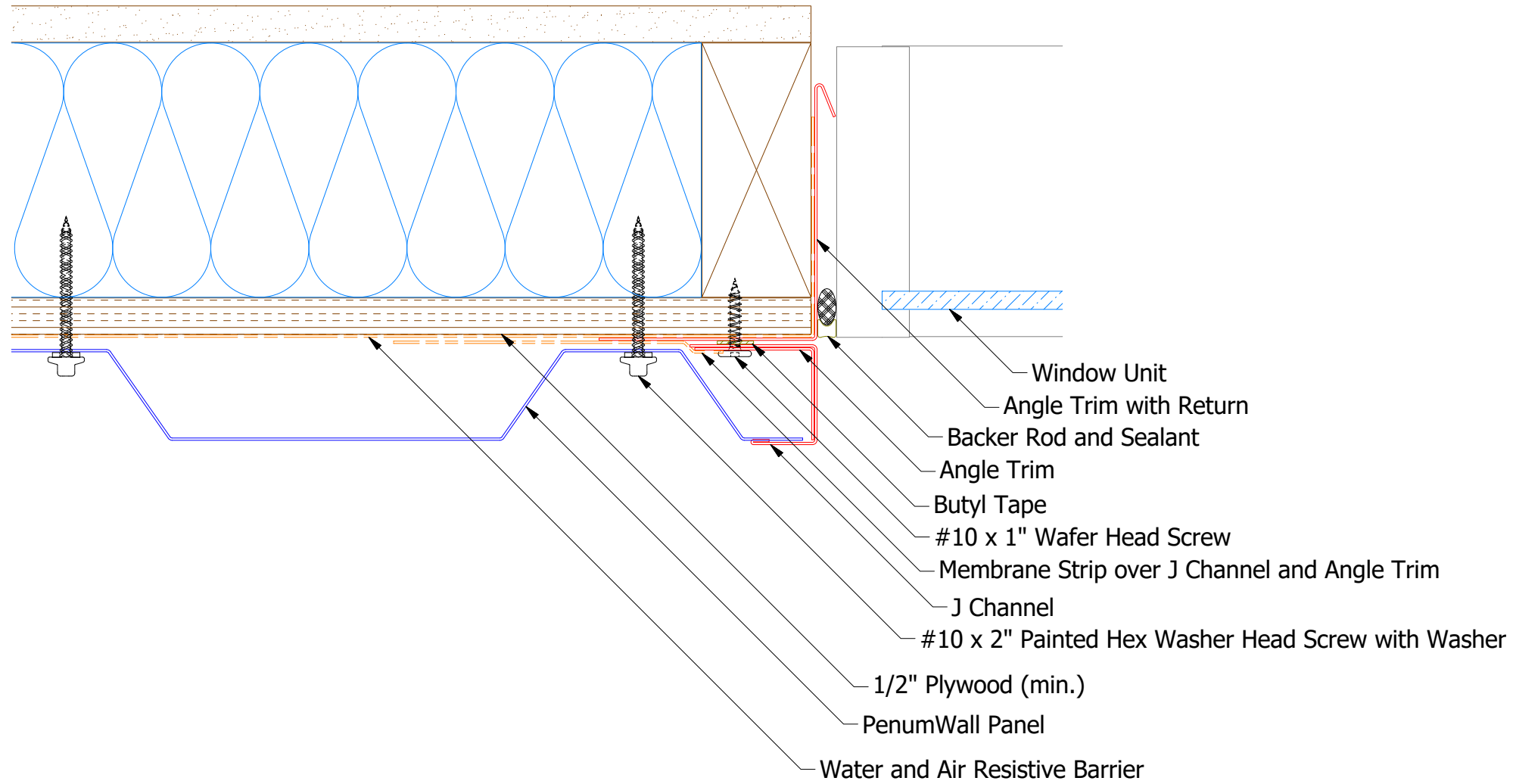
**ATAS** ATAS INTERNATIONAL, INC  
 Allentown PA  
 610-395-8445  
 Mesa AZ  
 480-558-7210

TITLE PenumWall Head Flange Detail

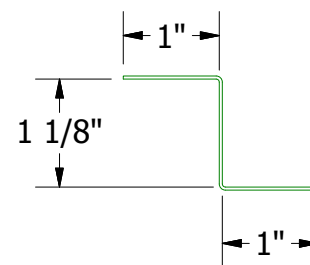
01	3/18/2021	Added color side note.	KRK	DR	DMR	DATE	12/4/2020
REV. NO.	DATE	DESCRIPTION OF REVISION	BY	APP	MATERIAL	SH. SIZE	SCALE
						B	X:X

Note: \* denotes color side.

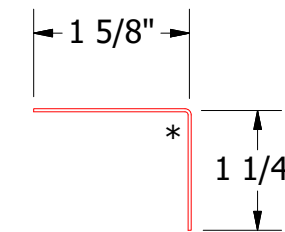
# Vertical Panel



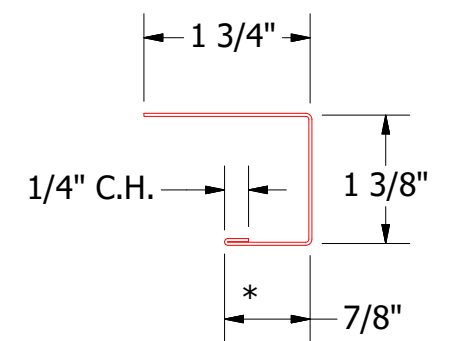
**BPA683 - Angle Trim with Return**



**BPA681 - Support Z**  
(if conditions apply)



**BPA680 - Angle Trim**

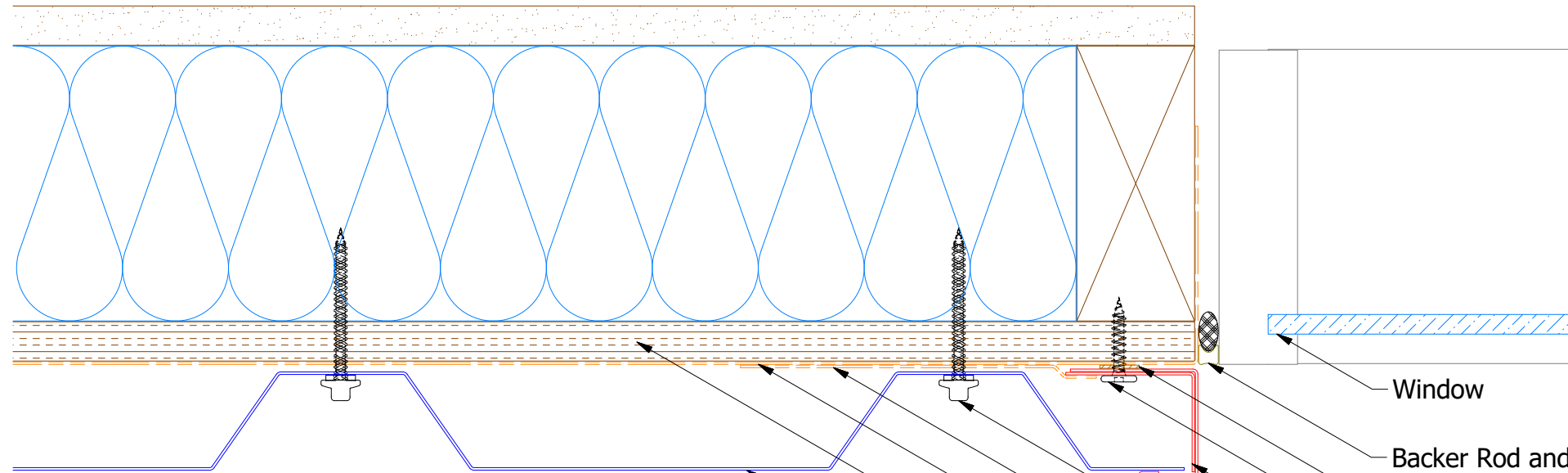


**BPA138 - J Channel**

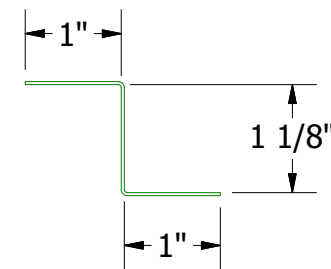
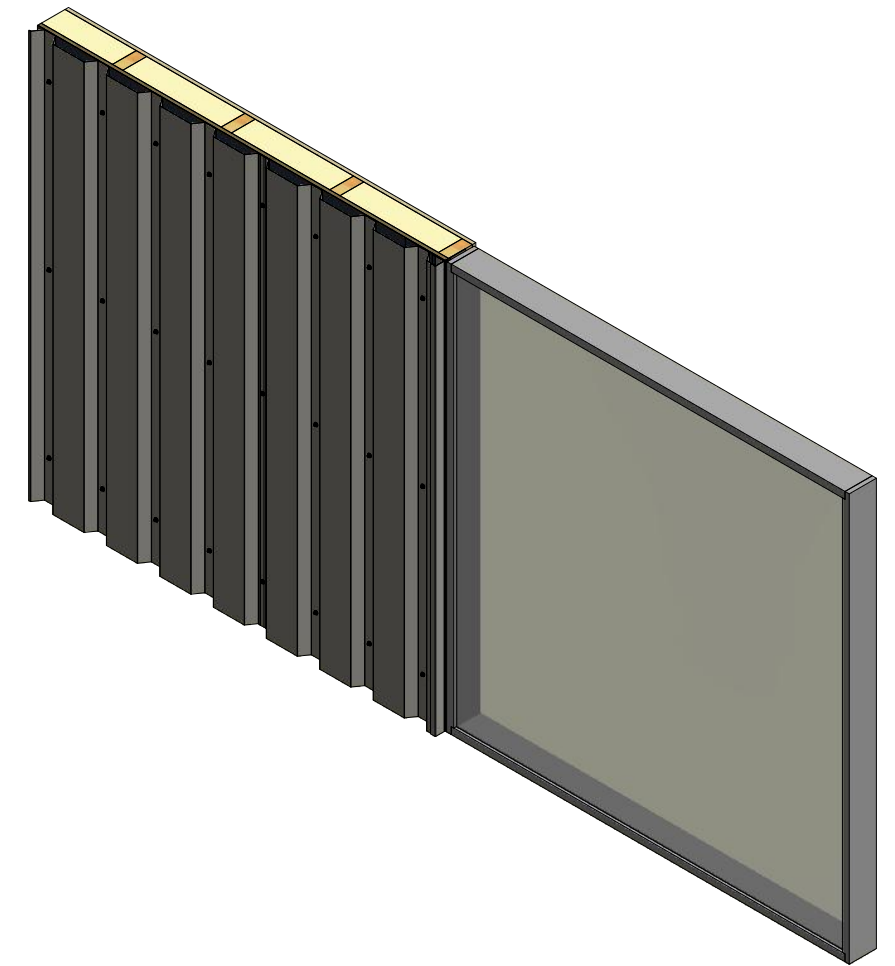
Note: \* denotes color side.

		<b>ATAS INTERNATIONAL, INC</b> Allentown PA 610-395-8445 Mesa AZ 480-558-7210	
		<b>PenumWall Jamb Detail</b>	
DWG. NO.	DR	DATE	
01	KRK	12/22/2015	
REV. NO.	APP	DATE	
01	DAS	7/16/20	
DATE	SH. SIZE	SCALE	
3/18/2021	B	X:X	
DESCRIPTION OF REVISION	BY	APP	
Added Support Z and color side note.	KRK		

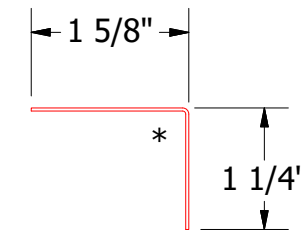
# Vertical Panel



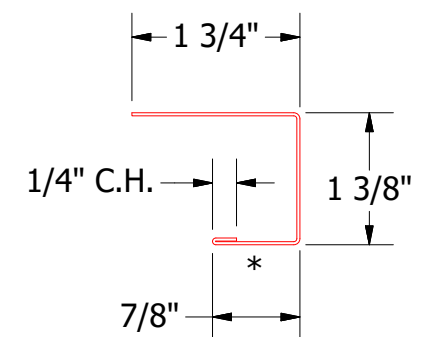
- Window
- Backer Rod and Sealant
- Butyl Tape
- #10 x 1" Wafer Head Fastener
- Angle Trim
- J Channel
- #10 x 2" Painted Hex Washer Head Fastener
- Membrane Strip
- Water and Air Resistive Barrier
- 1/2" Plywood (min.)
- PenumWall Panel



**BPA681 - Support Z**  
(if conditions apply)

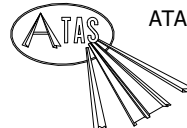


**BPA680 - Angle Trim**



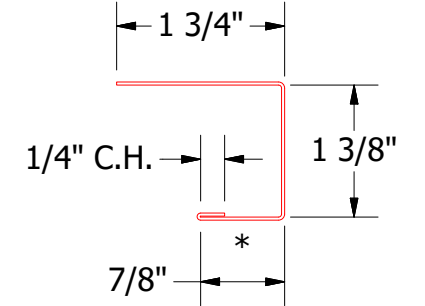
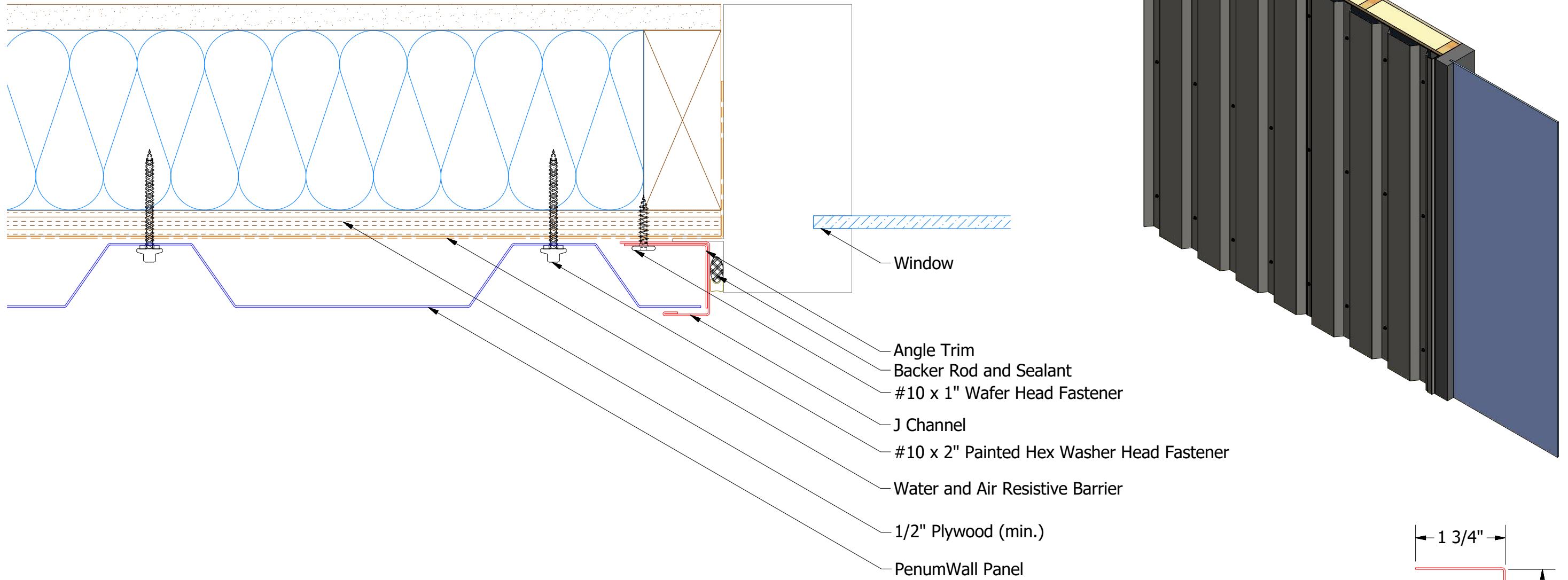
**BPA158 - J Channel**

Note: \* denotes color side.

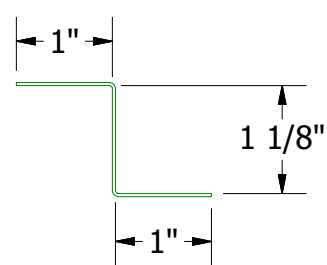
 <b>ATAS INTERNATIONAL, INC</b> Allentown PA 610-395-8445 Mesa AZ 480-558-7210		TITLE <b>PenumWall Existing Jamb Detail</b>	
		DWG. NO.	DR APP
REV. NO.	DATE	DESCRIPTION OF REVISION	BY APP
		SH. SIZE B	SCALE X:X

01	3/22/2021	Added Support Z and color side note.	KRK
REV. NO.	DATE	DESCRIPTION OF REVISION	BY APP

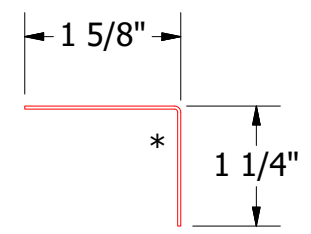
# Vertical Panel




**BPA158 - J Channel**



**BPA681 - Support Z**  
(if conditions apply)



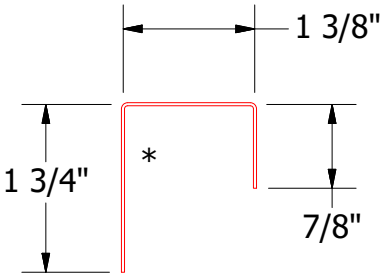
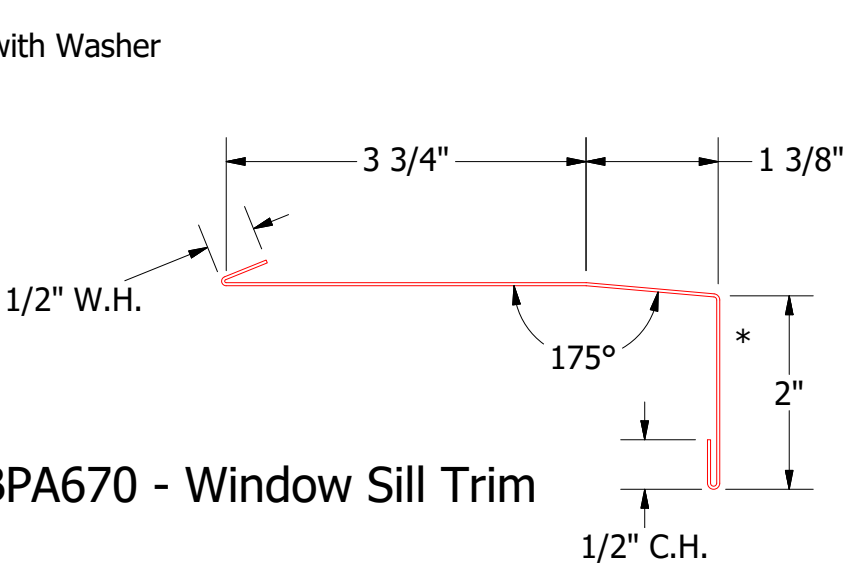
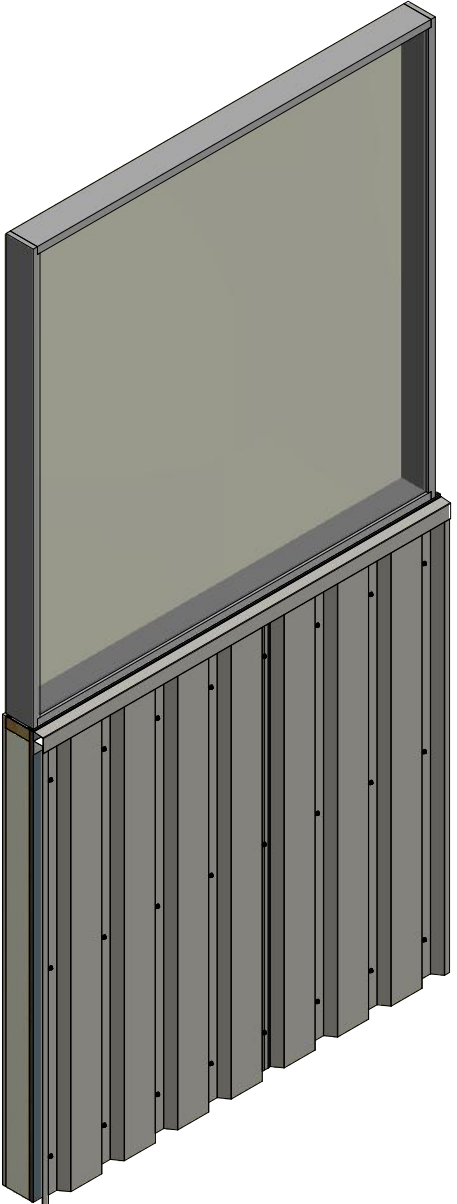
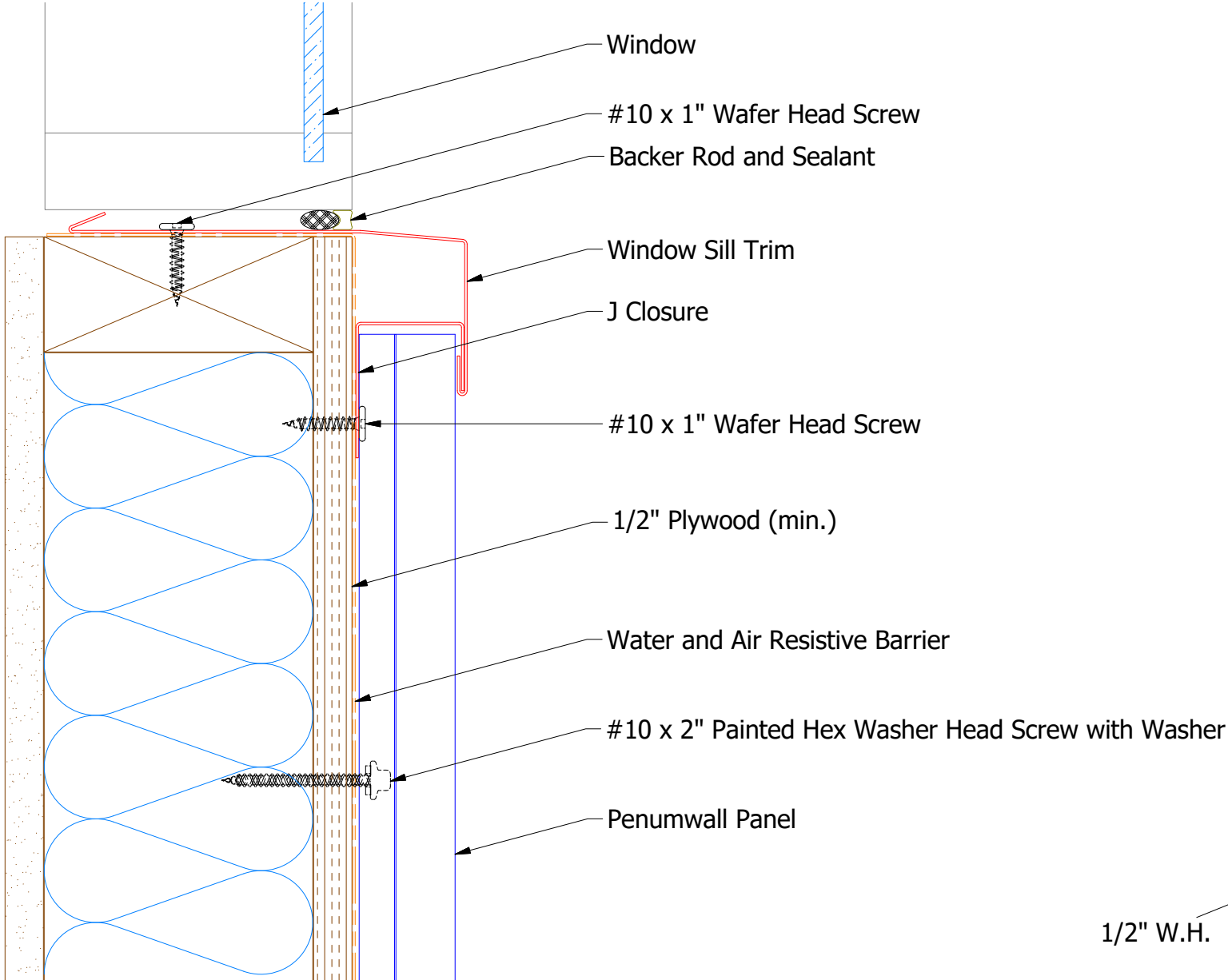
**BPA680 - Angle Trim**

 <b>ATAS INTERNATIONAL, INC</b> Allentown PA 610-395-8445 Mesa AZ 480-558-7210		TITLE <b>PenumWall Jamb Flange Detail</b>			
		DWG. NO.	DR APP	DATE 7/26/2018	DATE
REV. NO.	DATE	DESCRIPTION OF REVISION	BY APP	SH. SIZE B	SCALE X:X

Note: \* denotes color side.

01	3/22/2021	Added Support Z and color side note.	KRK
REV. NO.	DATE	DESCRIPTION OF REVISION	BY

# Vertical Panel



**BWA270 - J Closure**

**BPA670 - Window Sill Trim**

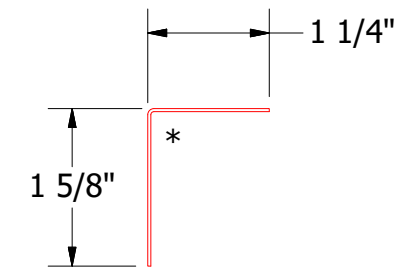
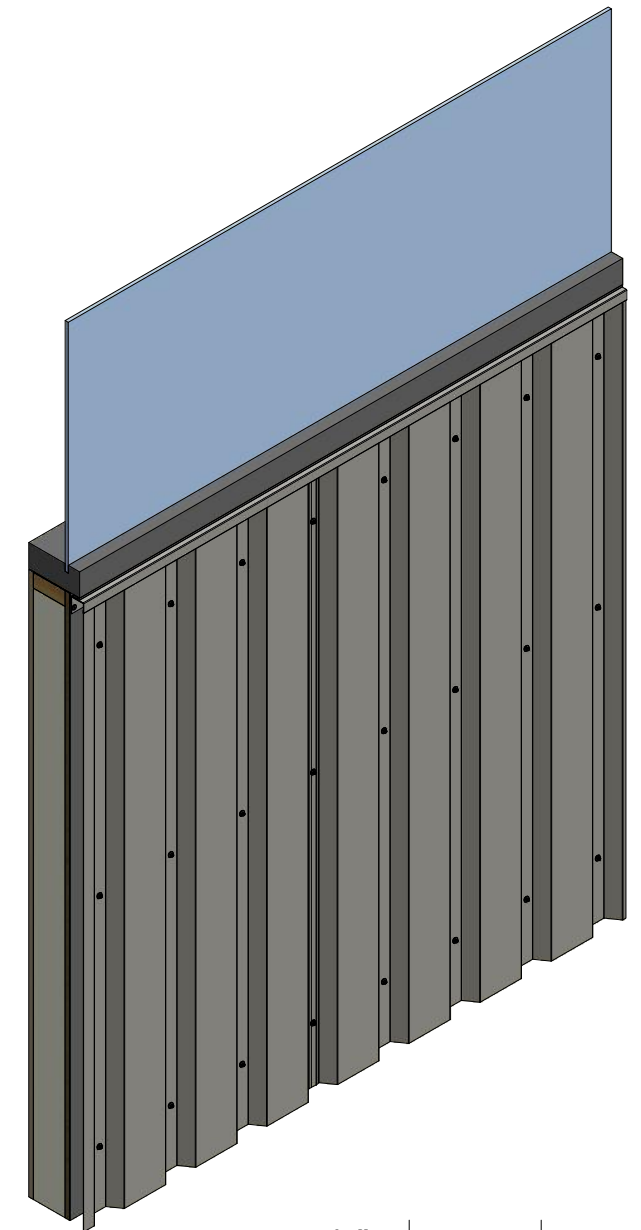
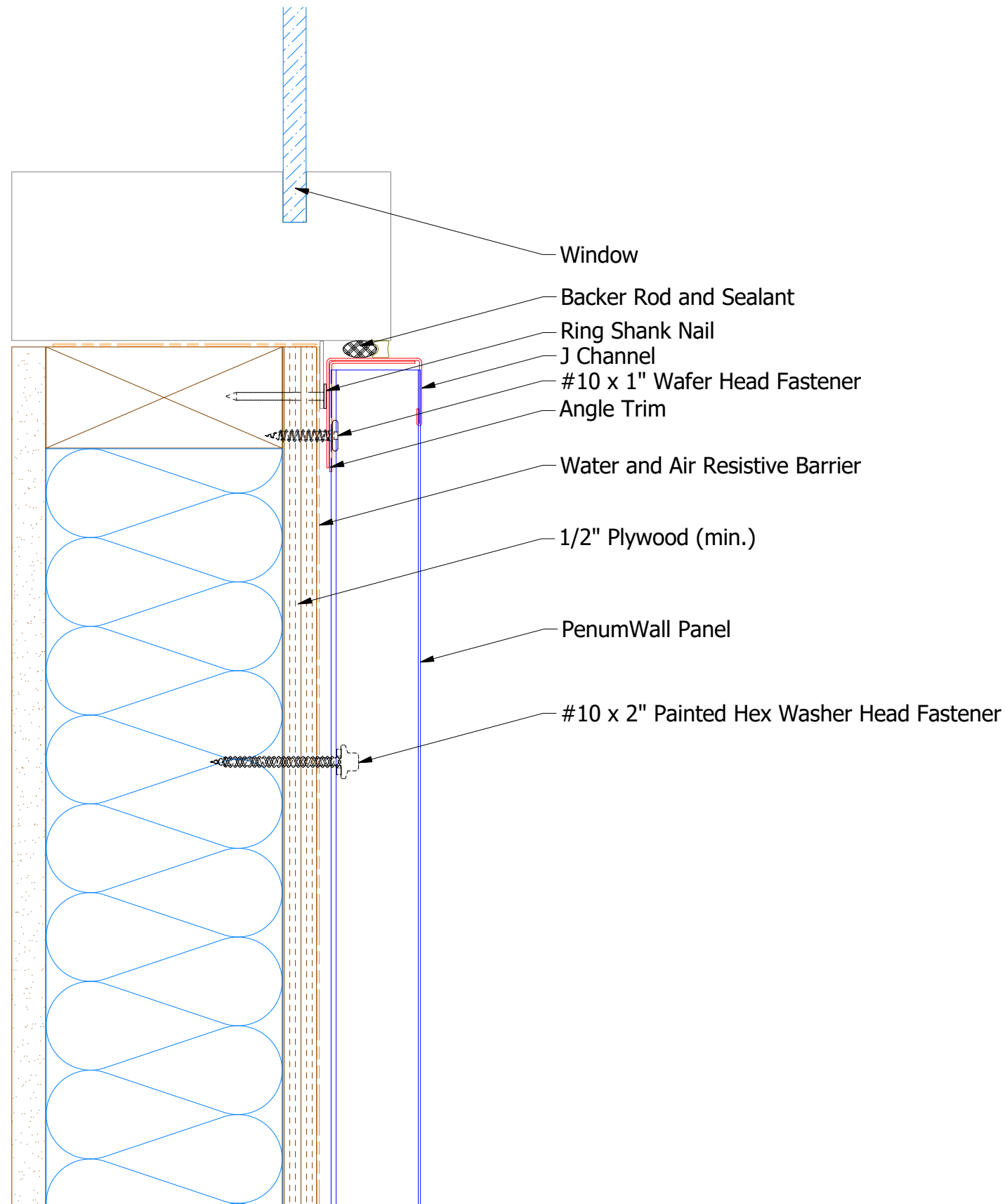
**ATAS** ATAS INTERNATIONAL, INC  
 Allentown PA  
 610-395-8445  
 Mesa AZ  
 480-558-7210

TITLE		PenumWall Window Sill Detail	
DWG. NO.	DR	DATE	12/17/2015
01	KRK	DATE	7/16/20
REV. NO.	DATE	DESCRIPTION OF REVISION	BY APP
01	3/23/2021	Added color side note.	KRK
MATERIAL		SH. SIZE	B
SCALE		X:X	

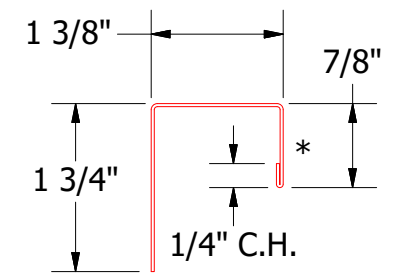
Note: \* denotes color side.



# Vertical Panel



**BPA680 - Angle Trim**



**BPA158 - J Channel**

Note: \* denotes color side.

 <b>ATAS INTERNATIONAL, INC</b> Allentown PA 610-395-8445 Mesa AZ 480-558-7210		TITLE <b>PenumWall Window Sill Flange Detail</b>	
		DWG. NO.	DR DATE
01	3/23/2021	Added color side note.	KRK
REV. NO.	DATE	DESCRIPTION OF REVISION	BY APP
		MATERIAL	SH. SIZE
			SCALE
			B X:X
			9/21/2018
			DATE
			APP
			DMR
