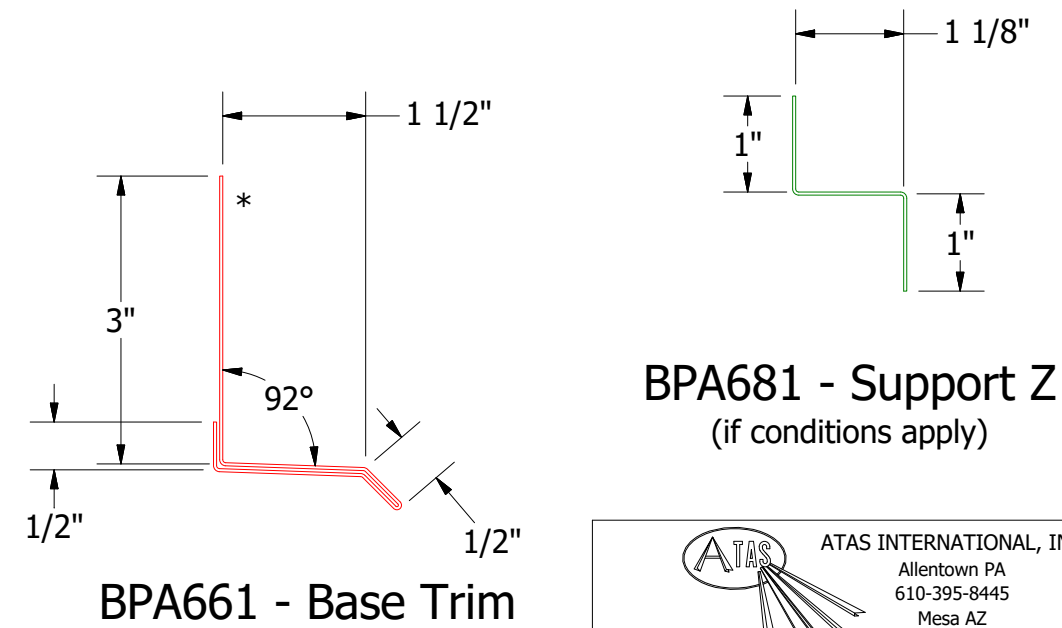
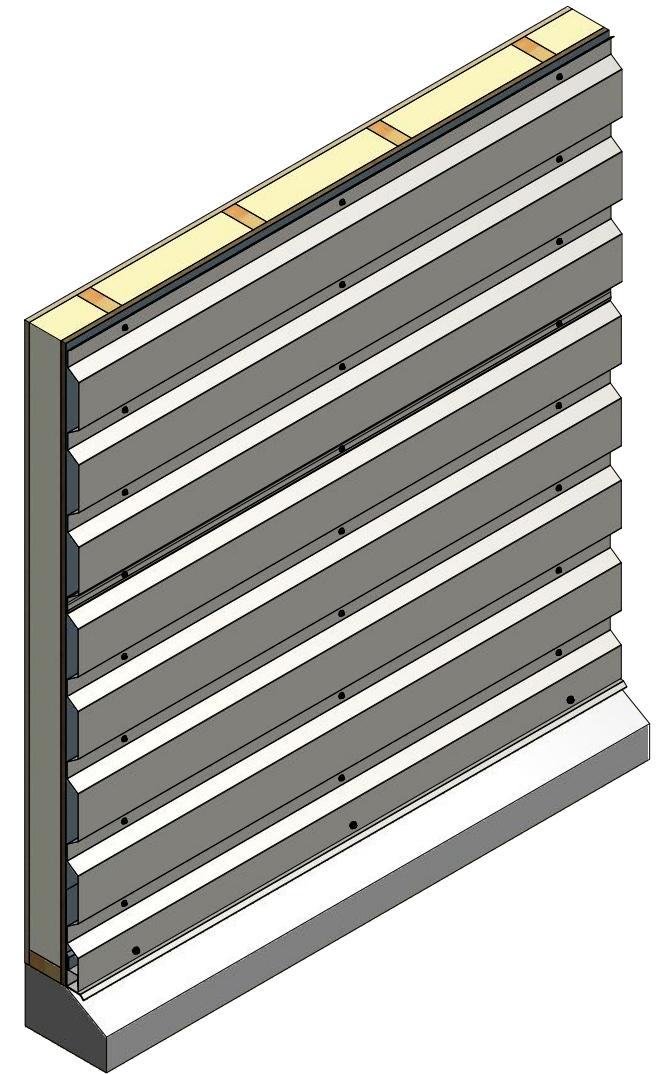
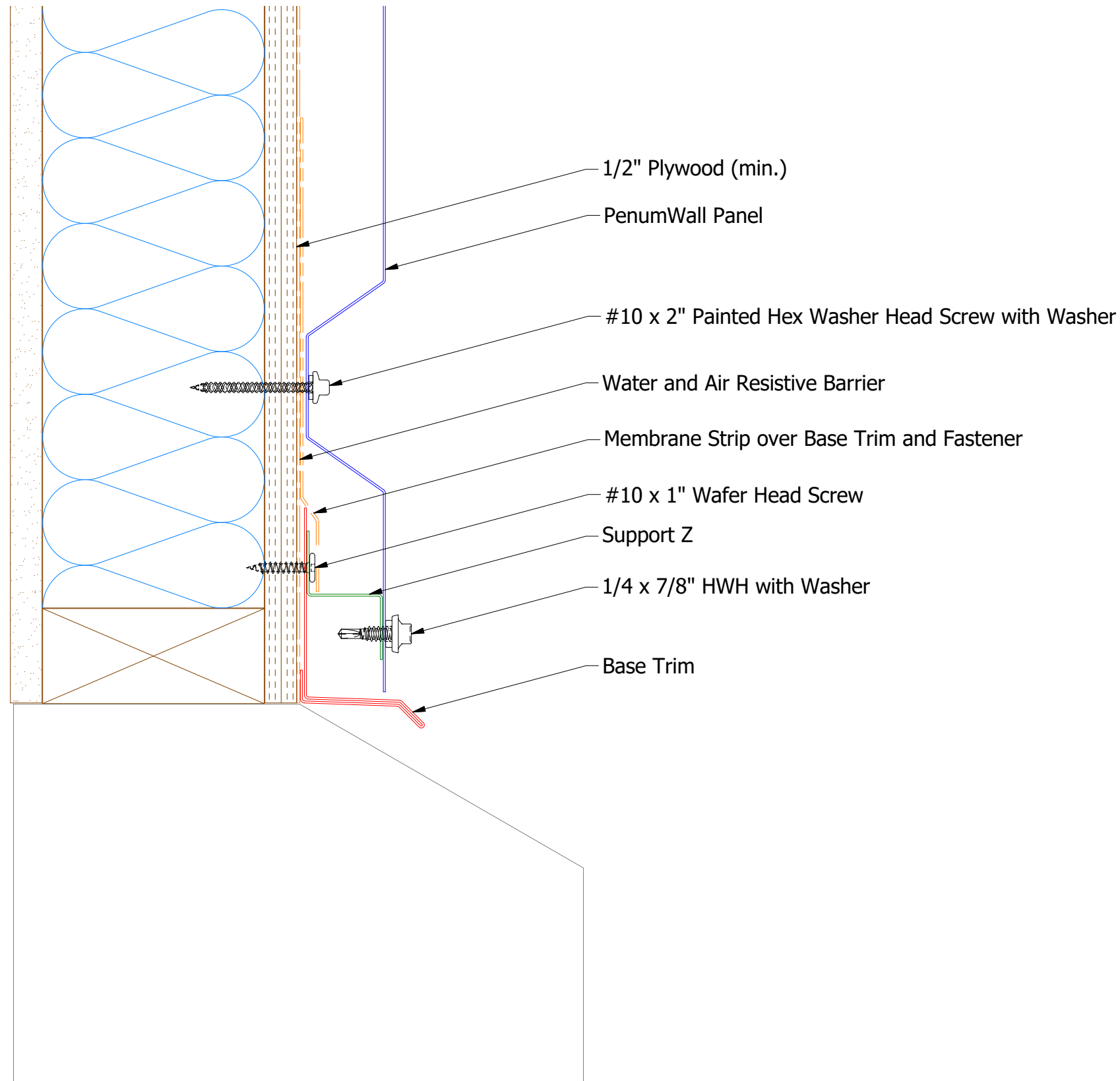


**ATAS INTERNATIONAL, INC**  
 Allentown PA  
 610-395-8445  
 Mesa AZ  
 480-558-7210

TITLE **PenumWall Panel Profile Detail**

REV. NO.	DATE	DESCRIPTION OF REVISION	BY	APP	DWG. NO.	DR	KRK	DATE	1/15/2016
						APP	DAS	DATE	7/21/16
					MATERIAL	SH. SIZE	B	SCALE	X:X

# Horizontal Panel

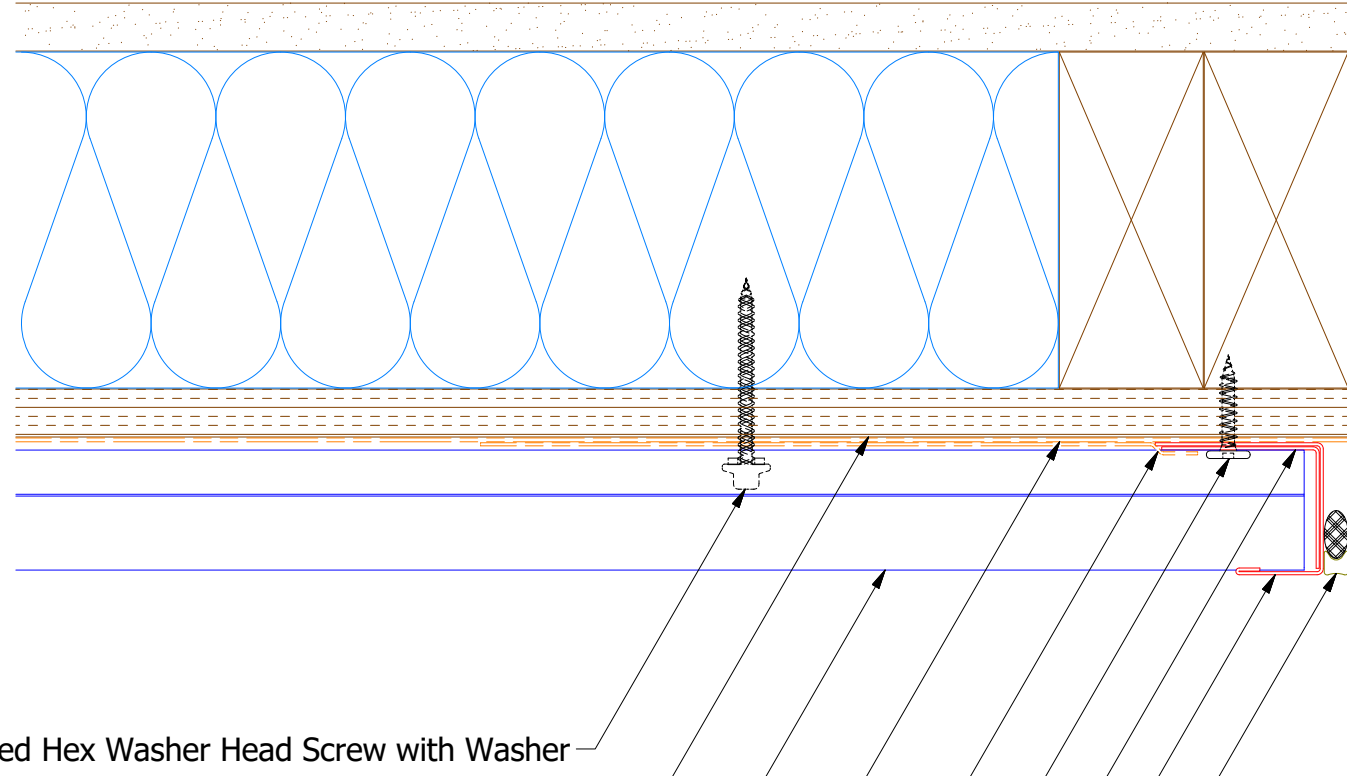


Note: \* denotes color side.

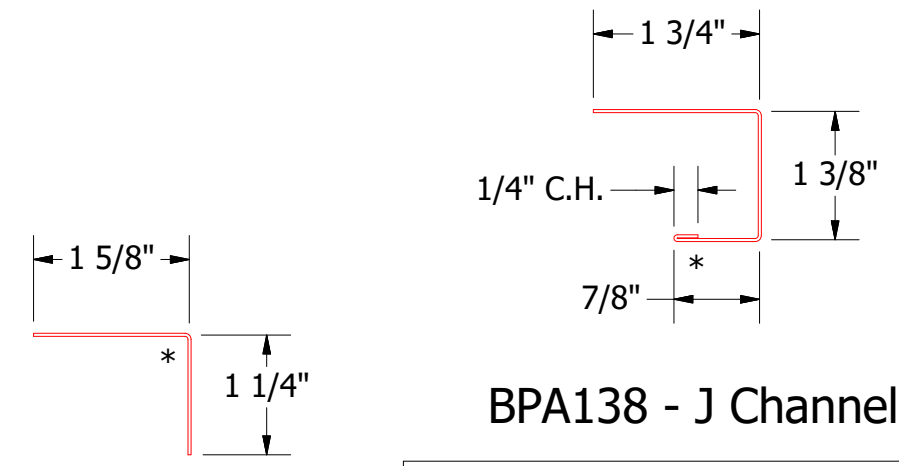
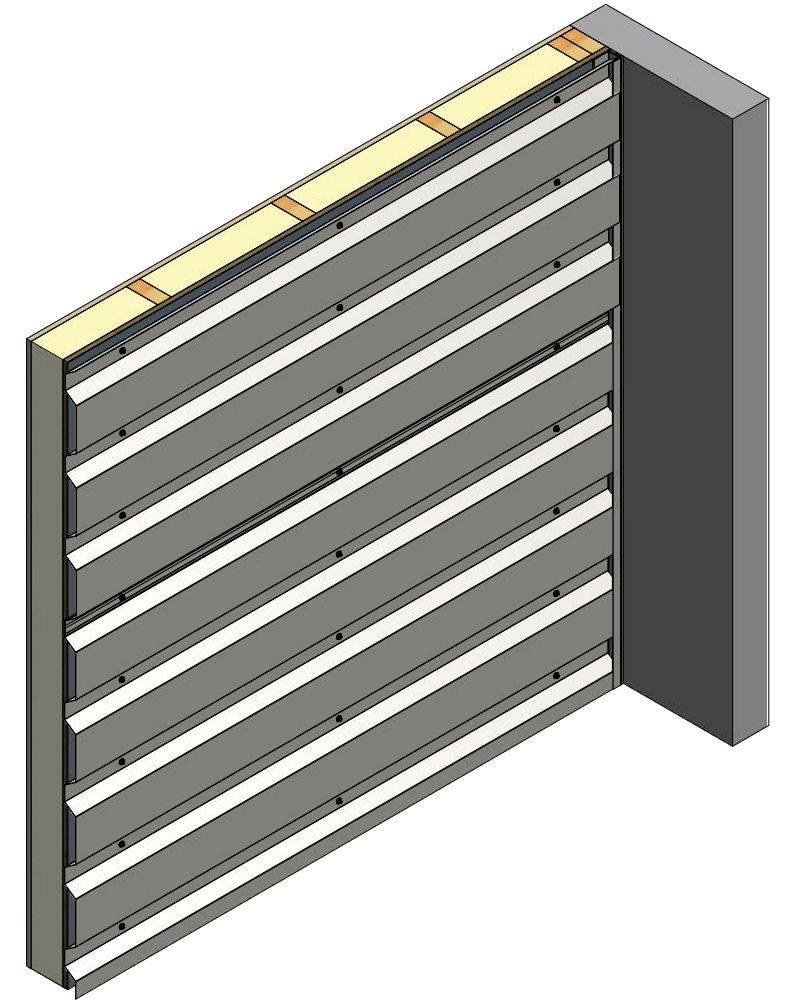
REV. NO.		DATE	DESCRIPTION OF REVISION	BY	APP	TITLE	
01	3/17/2021		Added Support Z Trim and color side note.	KRK		PenumWall Base Detail	
DWG. NO.						DR	DATE
						KRK	1/29/2016
MATERIAL						APP	DATE
						DAS	7/20/16
SH. SIZE						B	SCALE
							X:X

**ATAS** ATAS INTERNATIONAL, INC  
 Allentown PA  
 610-395-8445  
 Mesa AZ  
 480-558-7210

# Horizontal Panel



- #10 x 2" Painted Hex Washer Head Screw with Washer
- 1/2" Plywood (min.)
- PenumWall Panel
- Water and Air Resistive Barrier
- Membrane Strip over J Channel and Angle Trim
- #10 x 1" Wafer Head Screw
- Angle Trim
- J Channel
- Backer Rod and Sealant



BPA680 - Angle Trim

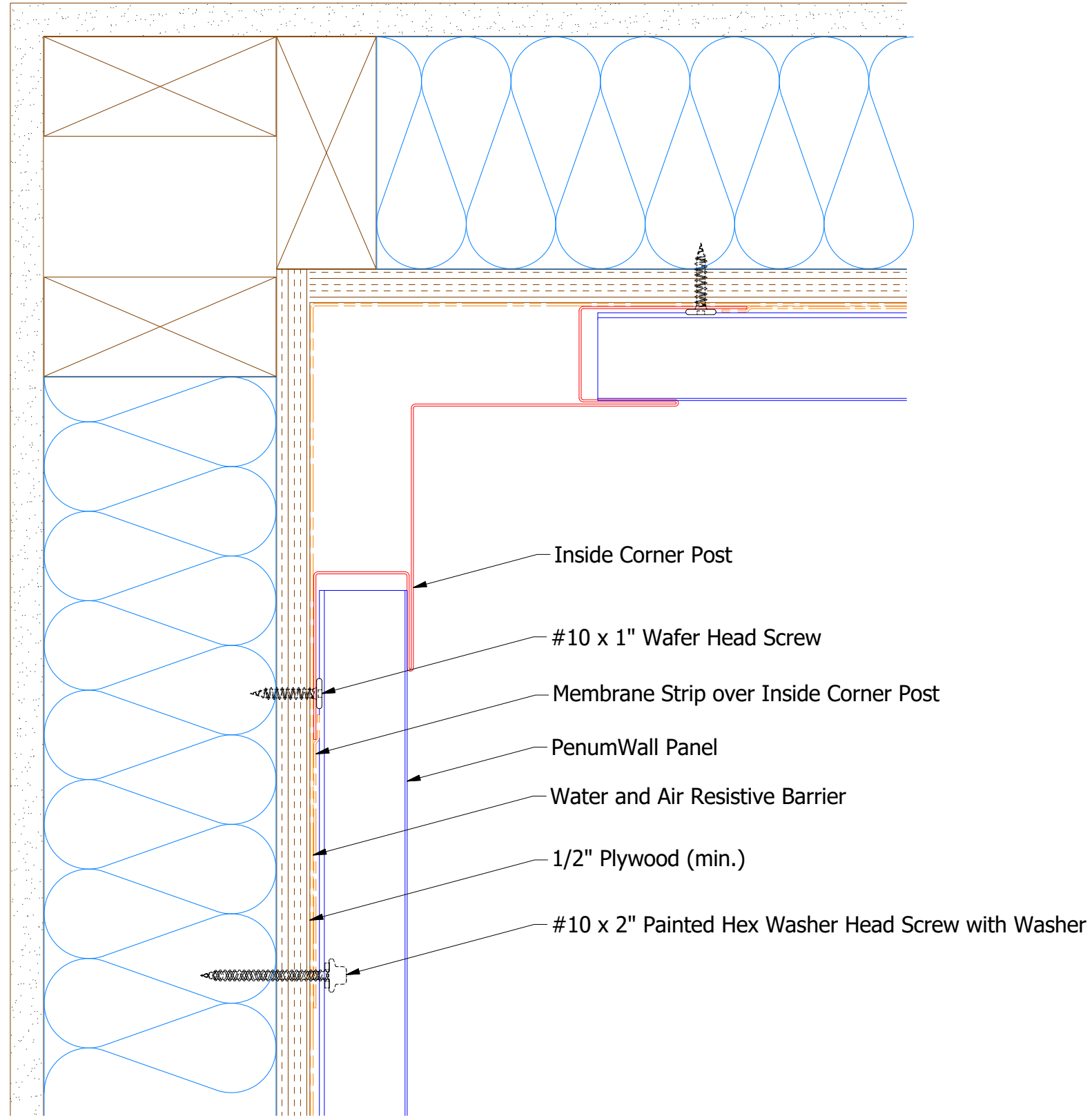
BPA138 - J Channel

**ATAS** INTERNATIONAL, INC  
 Allentown PA  
 610-395-8445  
 Mesa AZ  
 480-558-7210

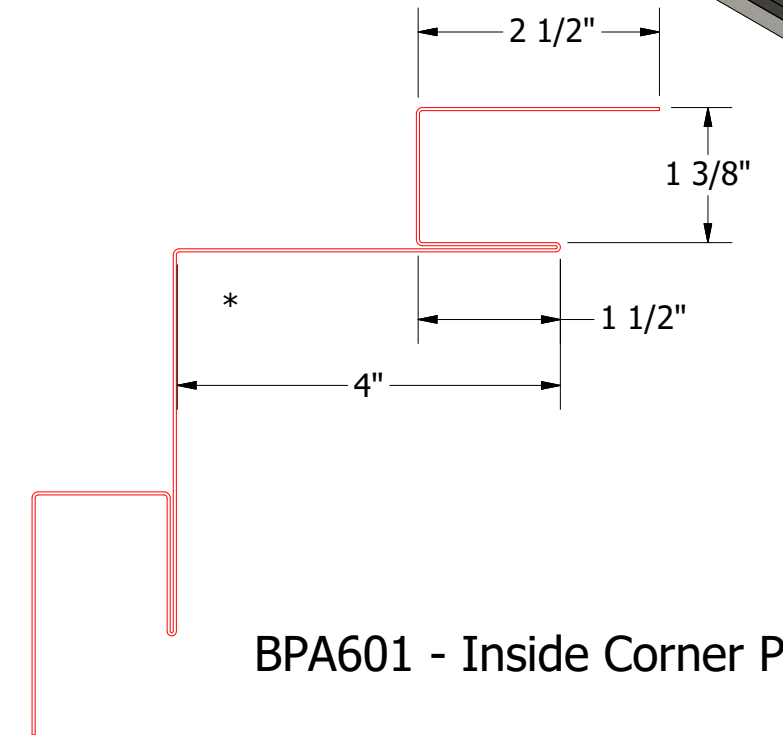
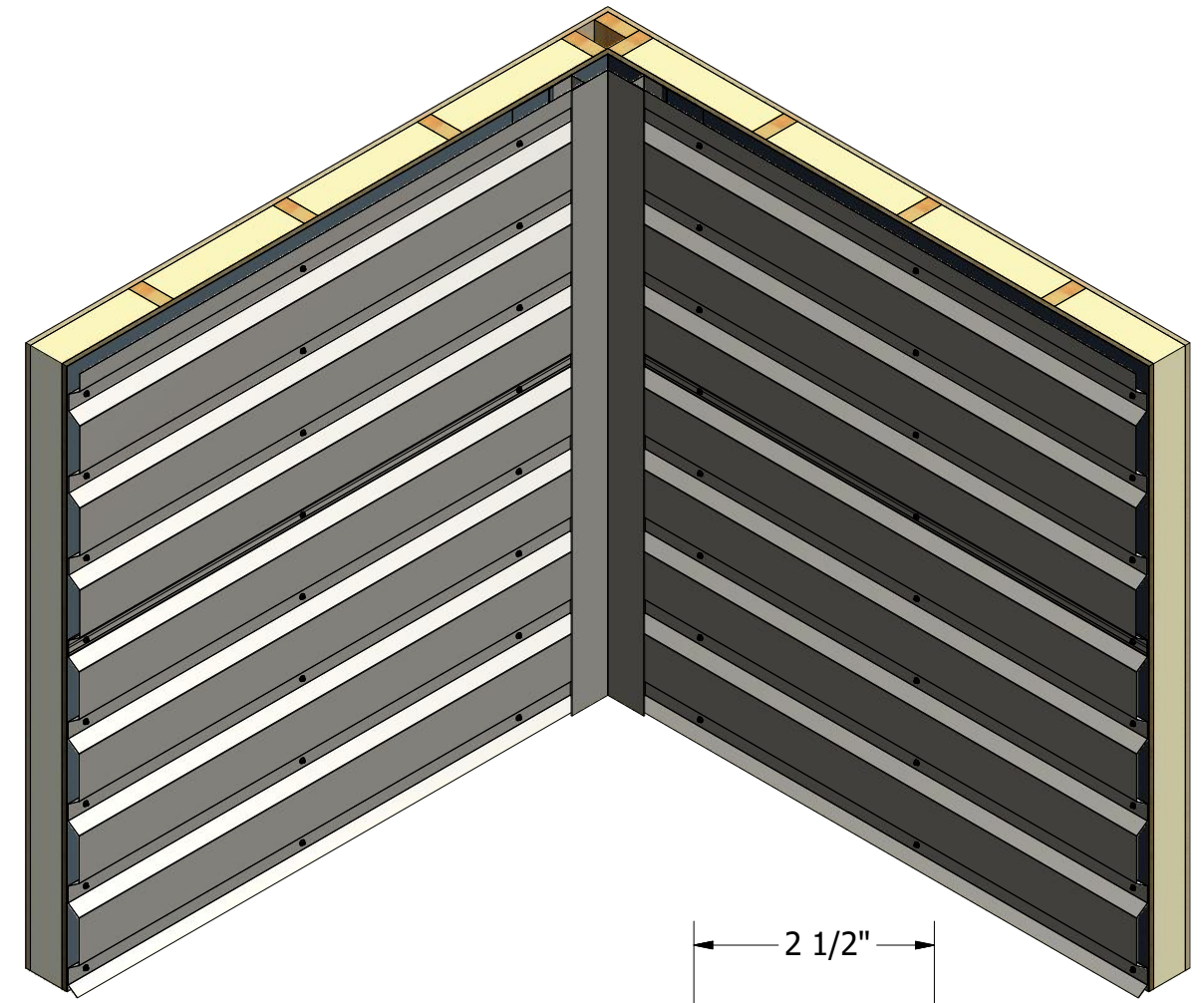
Note: \* denotes color side.

REV. NO.	DATE	DESCRIPTION OF REVISION	BY	APP	TITLE	DR	DATE
01	3/16/2021	Added color side note.	KRK		PenumWall Endwall Detail	KRK	1/29/2016
						DAS	7/16/20
						SH. SIZE	B
						SCALE	X:X

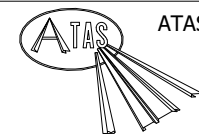
# Horizontal Panel



Note: \* denotes color side.



**BPA601 - Inside Corner Post**

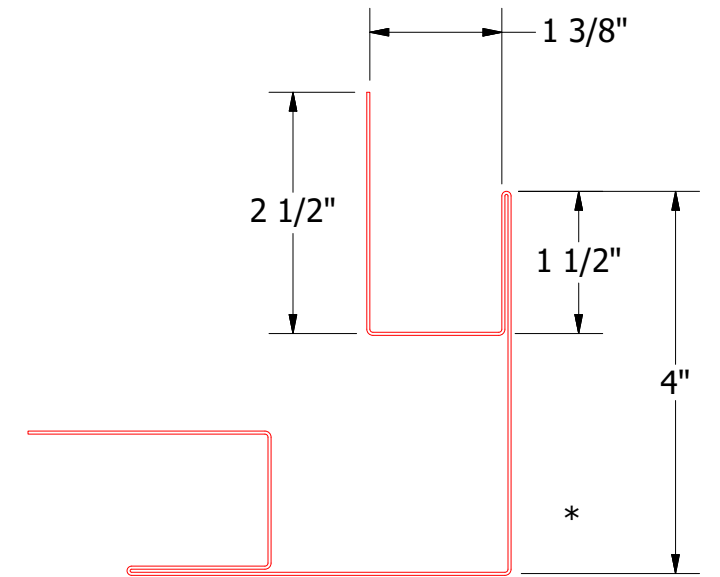
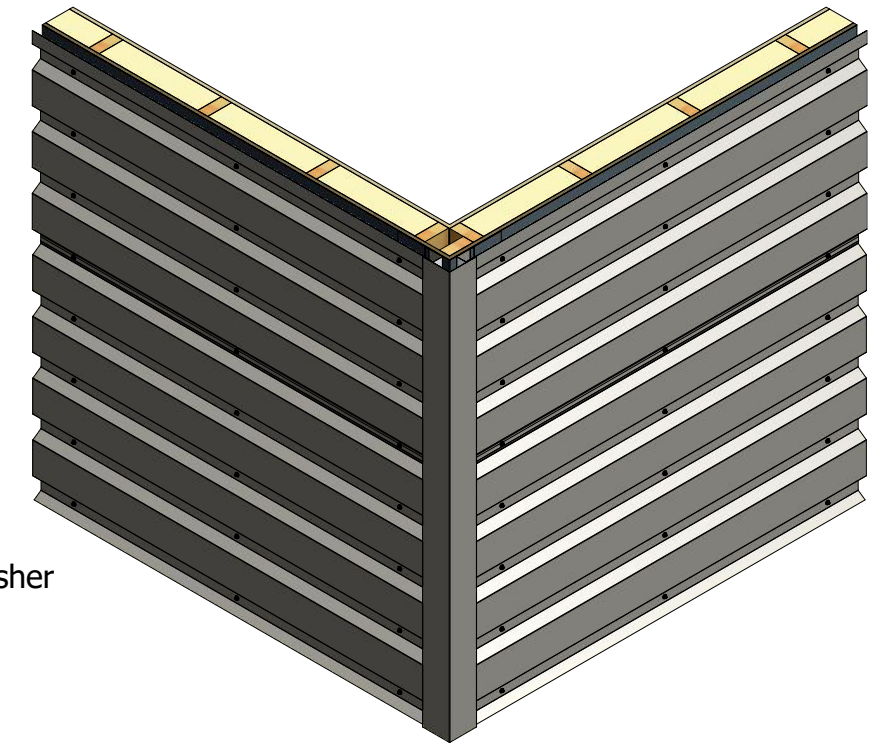
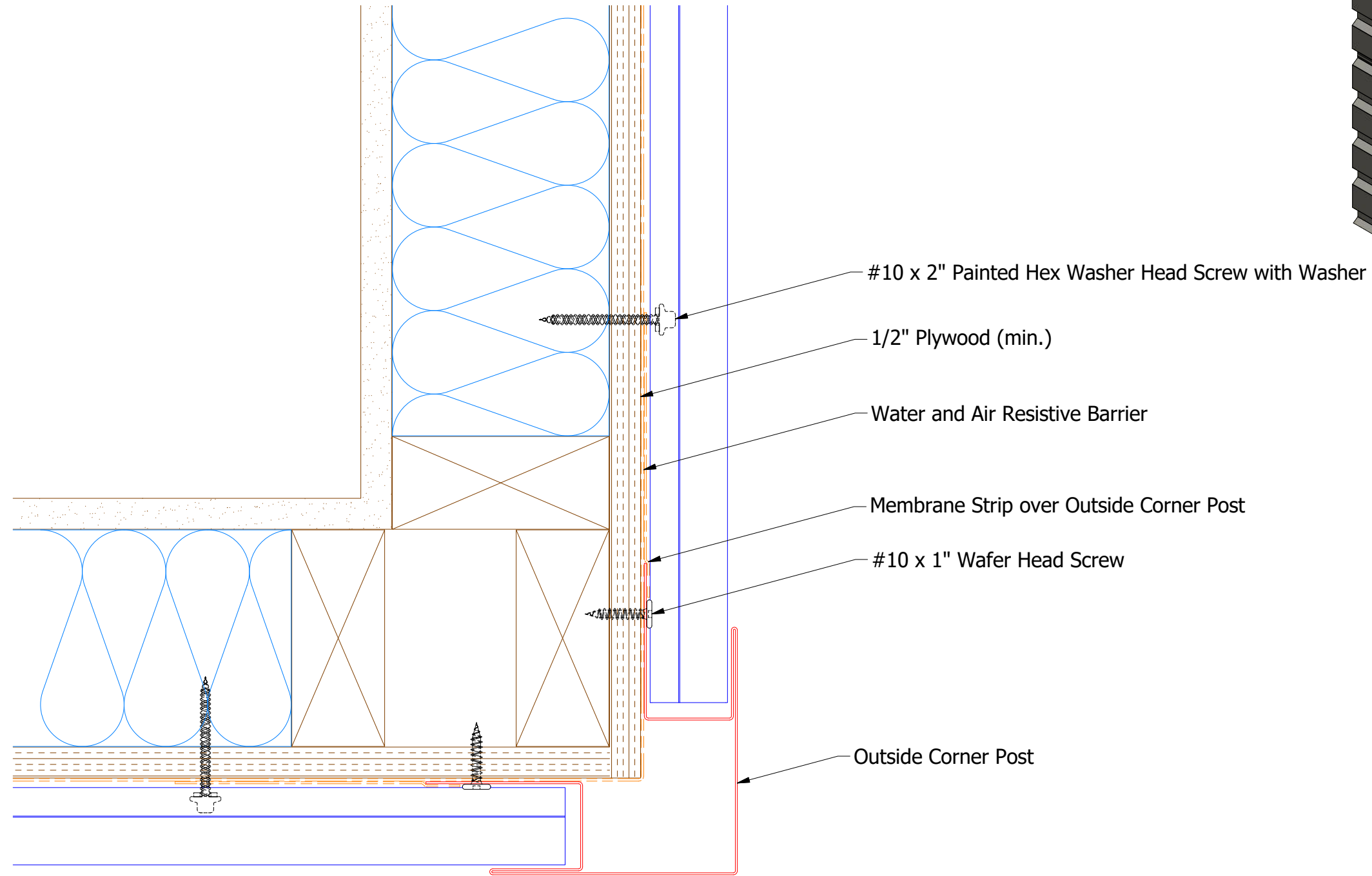


ATAS INTERNATIONAL, INC  
 Allentown PA  
 610-395-8445  
 Mesa AZ  
 480-558-7210

TITLE				PenumWall Inside Corner Detail			
01	3/18/2021	Added color side note.	KRK	DR	KRK	DATE	1/15/2016
REV. NO.	DATE	DESCRIPTION OF REVISION	BY	APP	DAS	DATE	7/20/16
				SH. SIZE	B	SCALE	X:X



# Horizontal Panel



BPA602 - Outside Corner Post

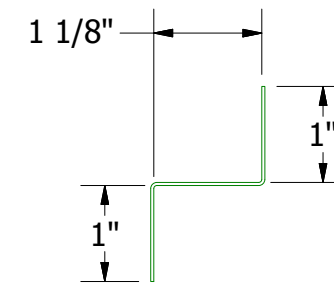
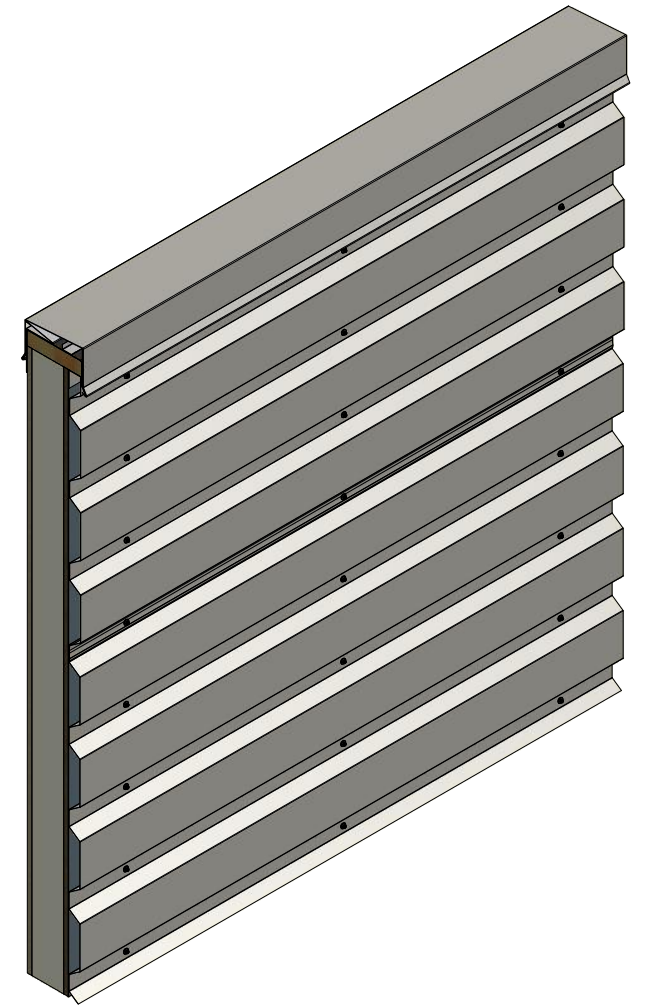
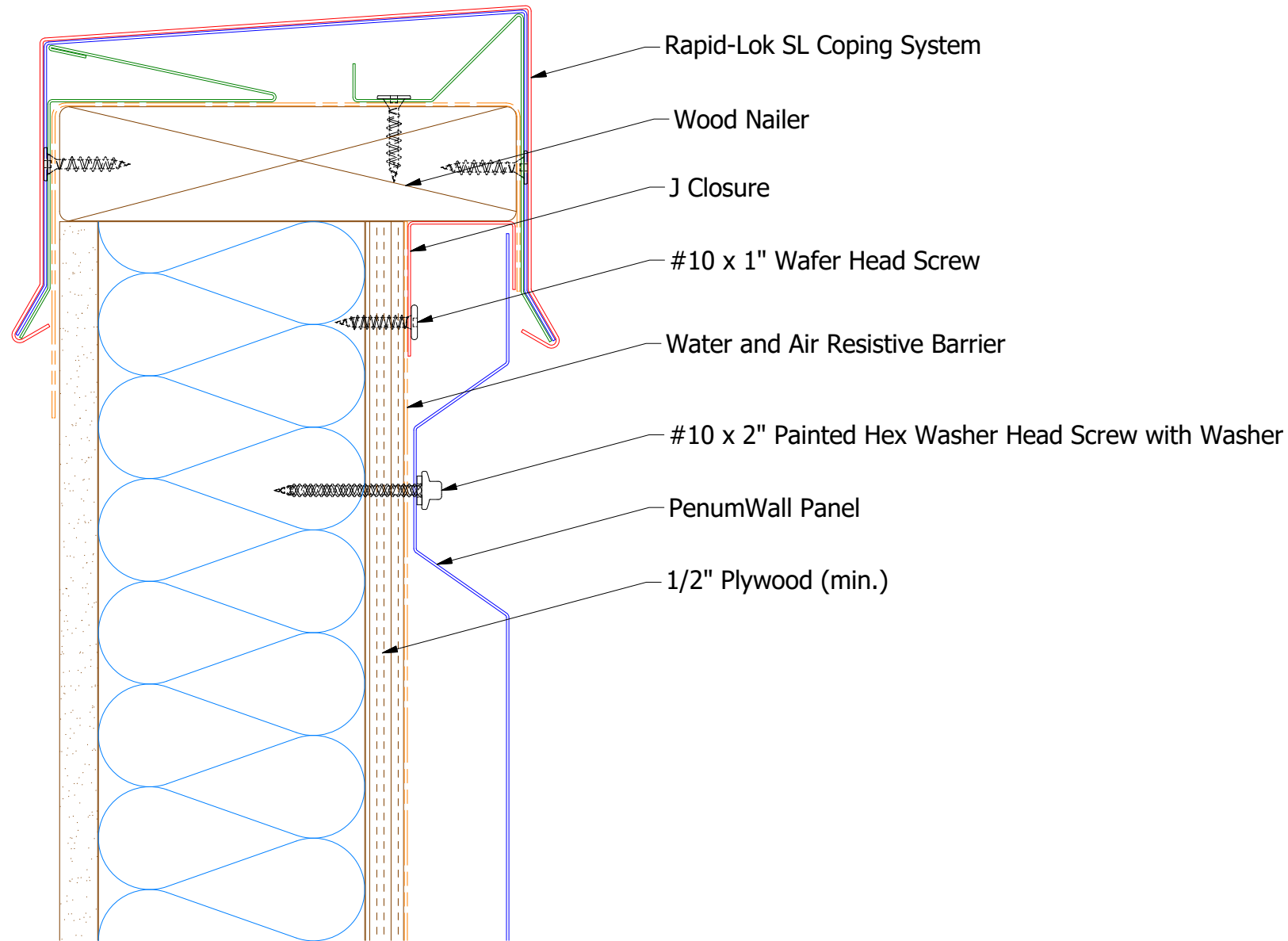
Note: \* denotes color side.



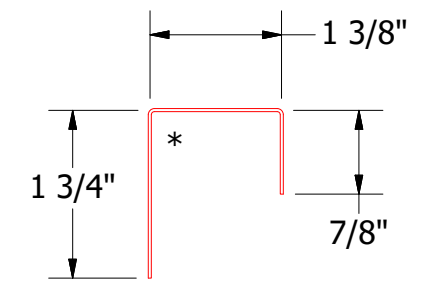
ATAS INTERNATIONAL, INC  
 Allentown PA  
 610-395-8445  
 Mesa AZ  
 480-558-7210

TITLE				DR		DATE	
PenumWall Outside Corner Detail				KRK		1/15/2016	
DWG. NO.				APP	DAS	DATE	7/20/16
MATERIAL				SH. SIZE	B	SCALE	X:X
REV. NO.	DATE	DESCRIPTION OF REVISION	BY	APP			
01	3/22/2021	Added color side note.	KRK				

# Horizontal Panel



**BPA681 - Support Z**  
(if conditions apply)



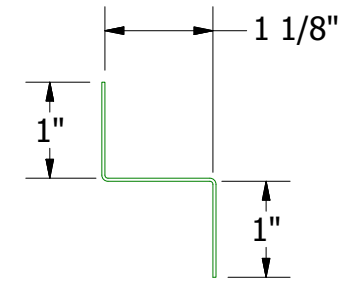
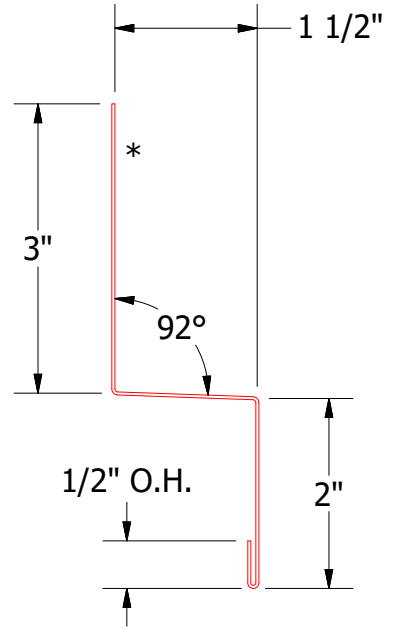
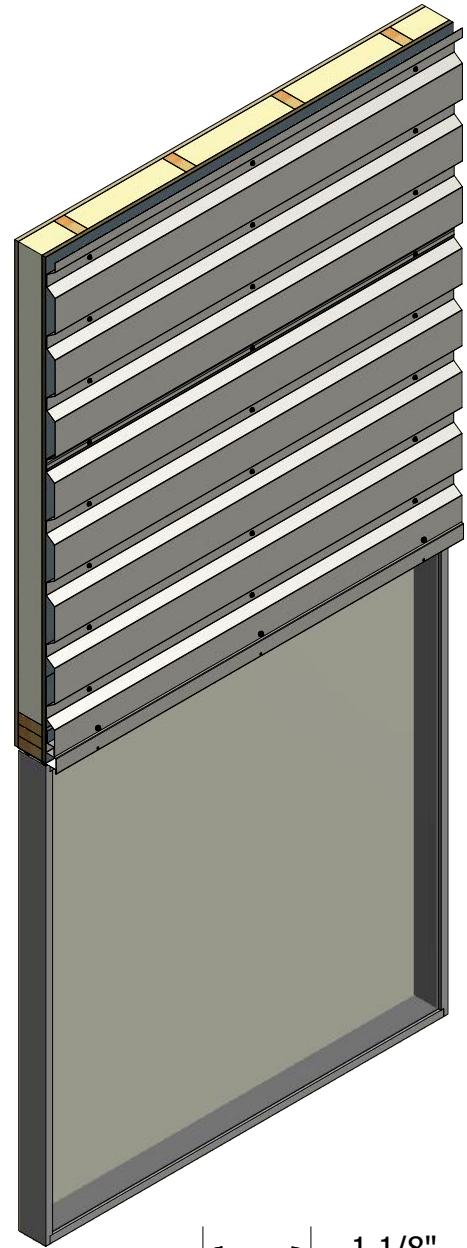
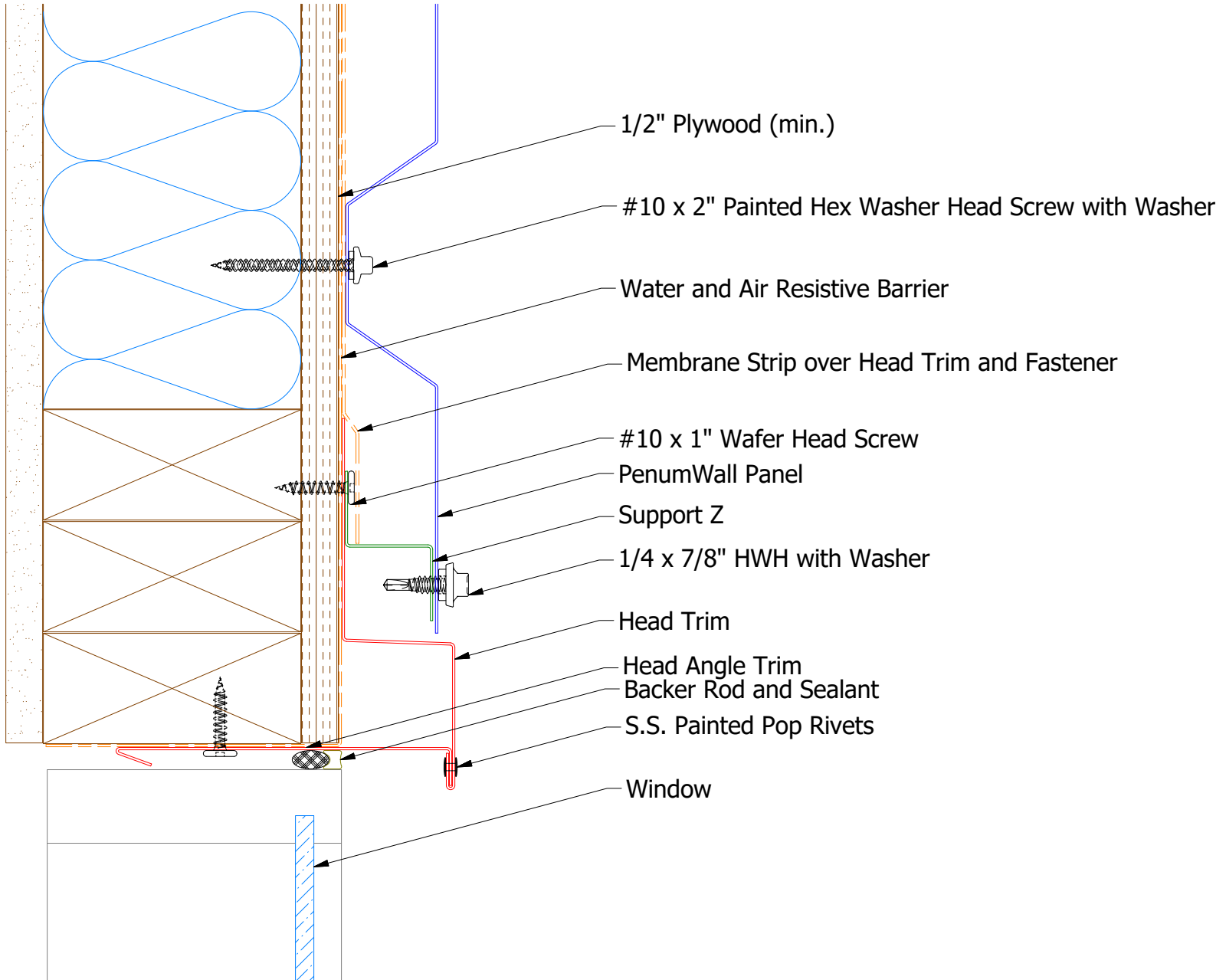
**BPA270 - J Closure**

Note: \* denotes color side.

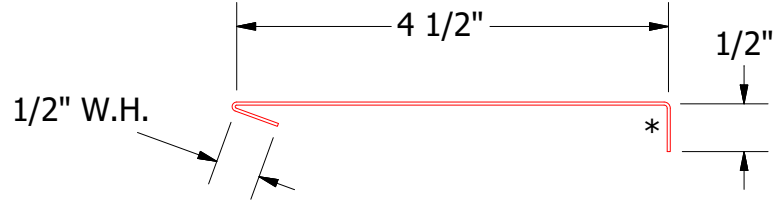
TITLE				PenumWall Top of Wall Detail			
DWG. NO.		DR		DATE		APP	
		KRK		12/17/2015		DAS	
REV. NO.		DATE		DESCRIPTION OF REVISION		BY	
01		3/23/2021		Added Support Z, Rapid-Lok SL Coping, and color side note.		KRK	
REV. NO.		DATE		DESCRIPTION OF REVISION		BY	
						APP	
MATERIAL		SH. SIZE		SCALE		DATE	
		B		X:X		7/16/20	

**ATAS** INTERNATIONAL, INC  
Allentown PA  
610-395-8445  
Mesa AZ  
480-558-7210

# Horizontal Panel



**BPA681 - Support Z**  
(if conditions apply)



**BPA690 - Head Angle Trim**

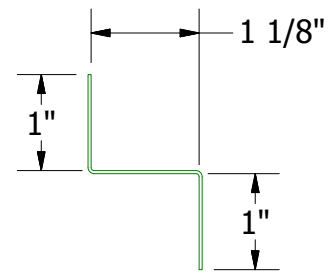
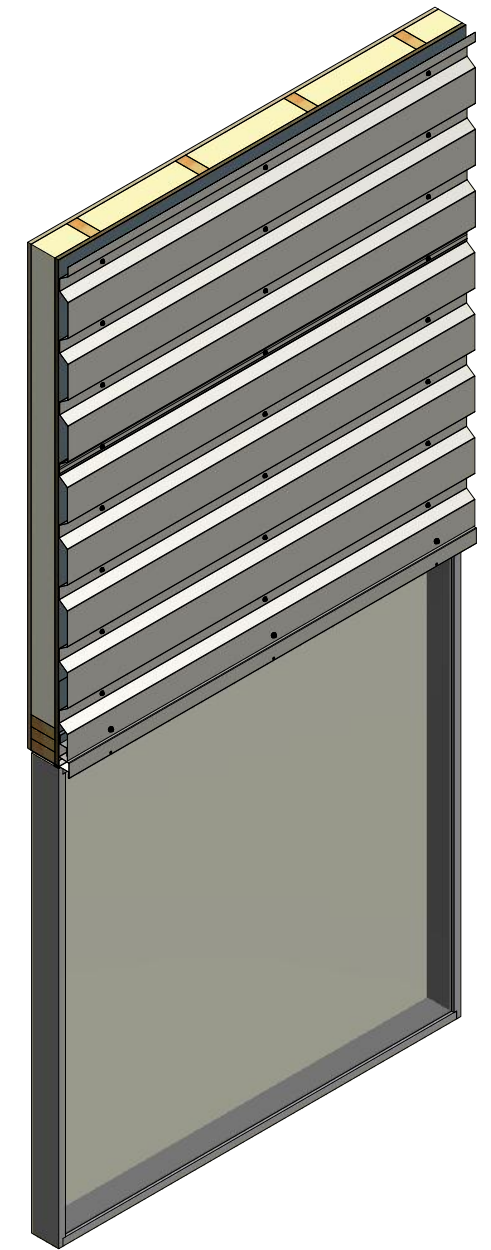
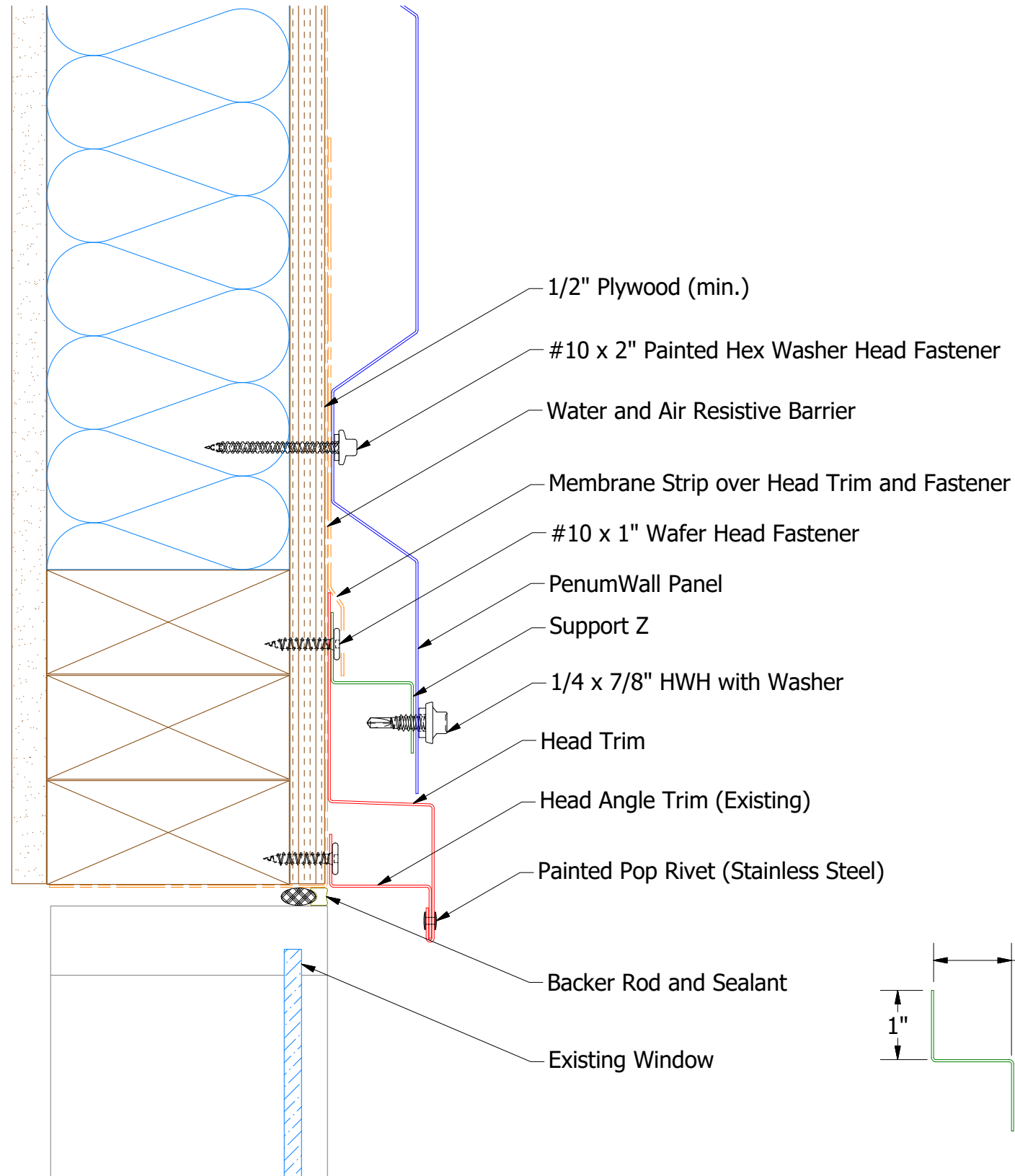
**BPA550 - Head Trim**

Note: \* denotes color side.

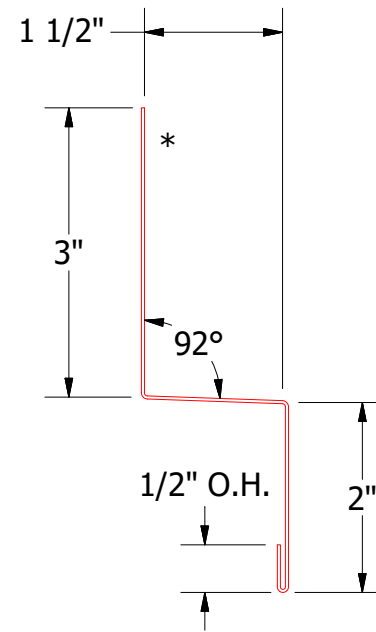
		<b>ATAS INTERNATIONAL, INC</b> Allentown PA 610-395-8445 Mesa AZ 480-558-7210	
<b>TITLE</b> PenumWall Head Detail			
DWG. NO.	DR	KRK	DATE 1/29/2016
REV. NO.	DATE	DESCRIPTION OF REVISION	APP
01	3/17/2021	Added Support Z and color side note.	KRK
MATERIAL	APP	DAS	DATE 7/20/16
SH. SIZE	B	SCALE	X:X

REV. NO.	DATE	DESCRIPTION OF REVISION	BY	APP
01	3/17/2021	Added Support Z and color side note.	KRK	DAS

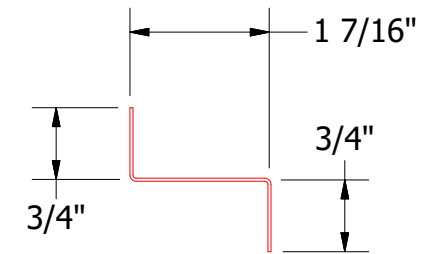
# Horizontal Panel



**BPA681 - Support Z**  
(if conditions apply)



**BPA550 - Head Trim**



**BPA691 - Head Angle Trim (Existing)**

Note: \* denotes color side.



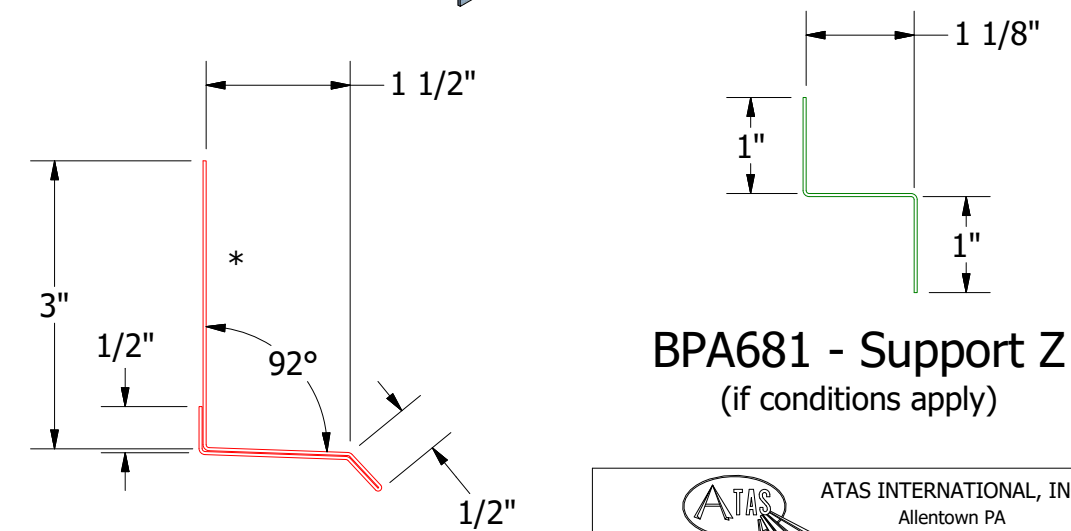
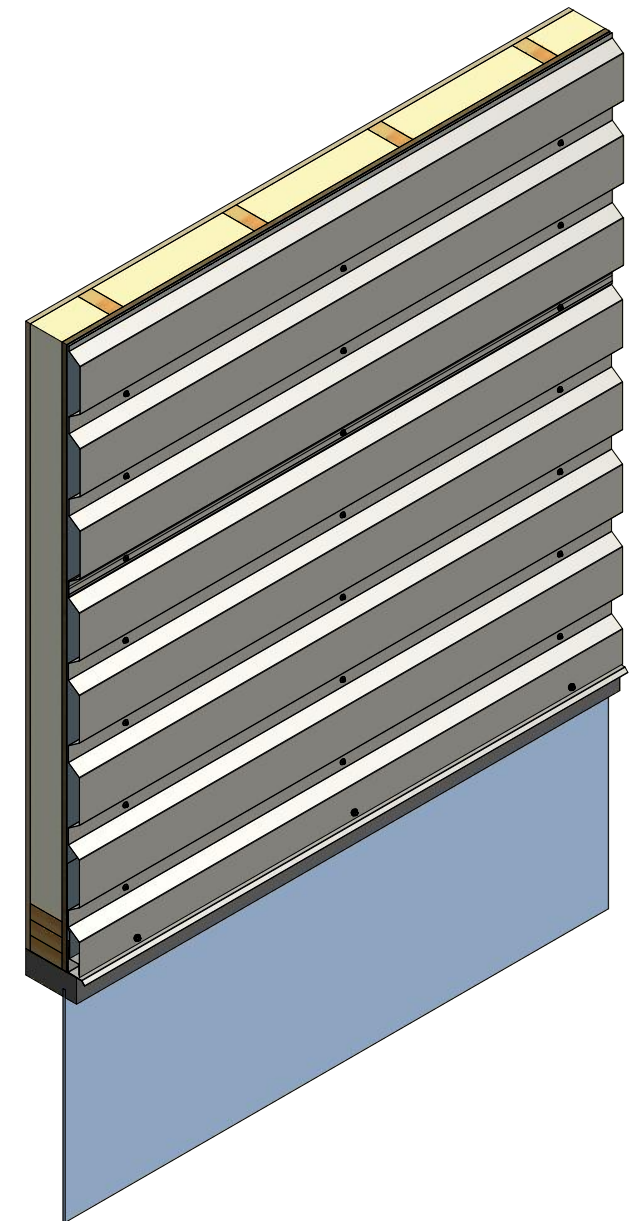
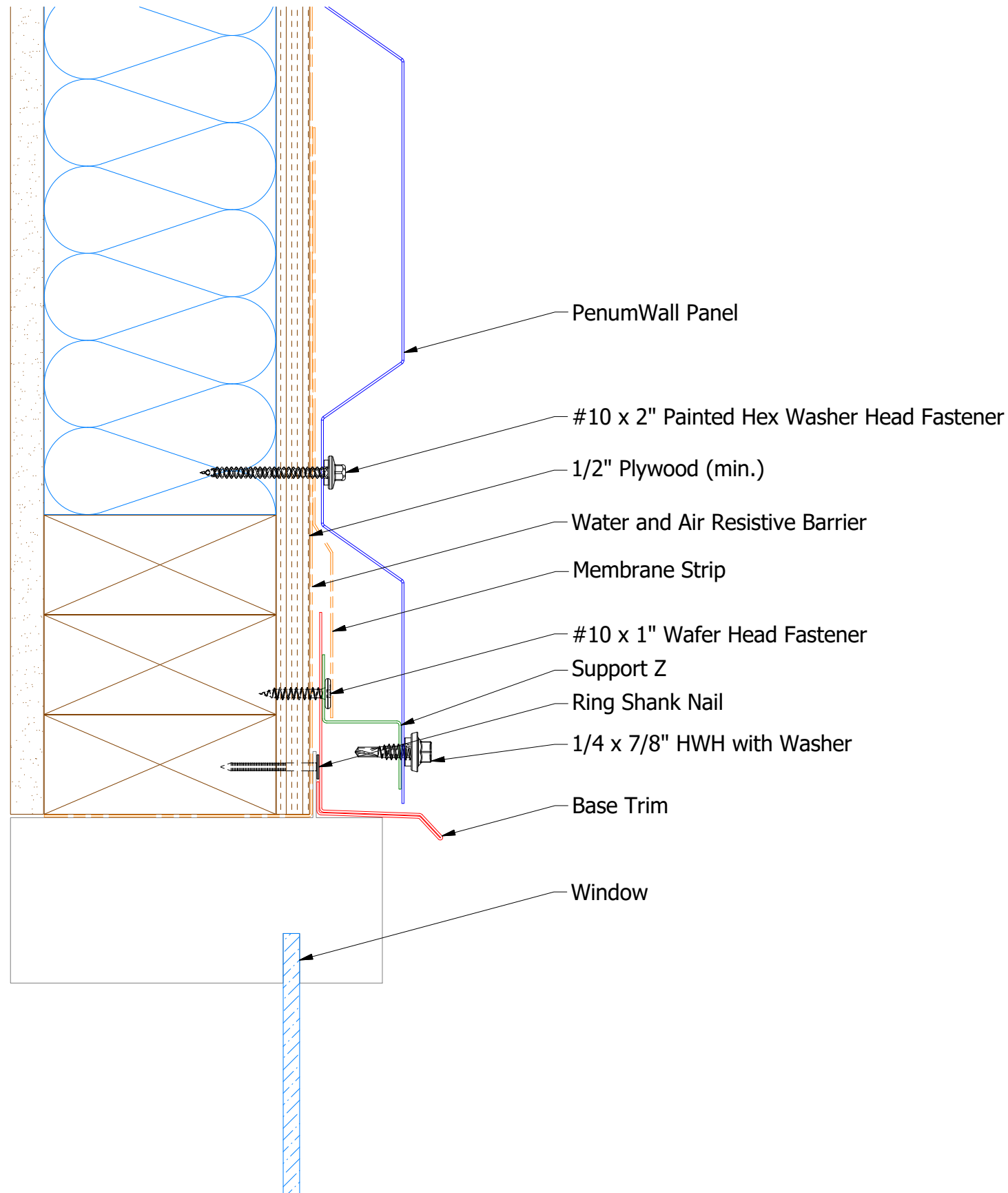
ATAS INTERNATIONAL, INC  
Allentown PA  
610-395-8445  
Mesa AZ  
480-558-7210

TITLE  
PenumWall Panel Head Existing Window Detail

DR	DMR	DATE	7/11/2016
APP	DAS	DATE	7/25/16
SH. SIZE	B	SCALE	X:X



# Horizontal Panel

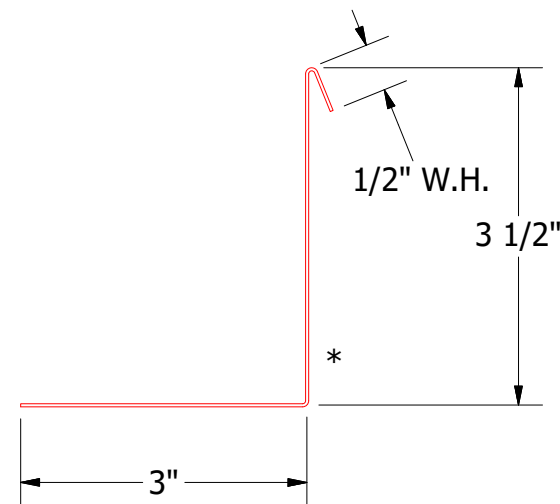
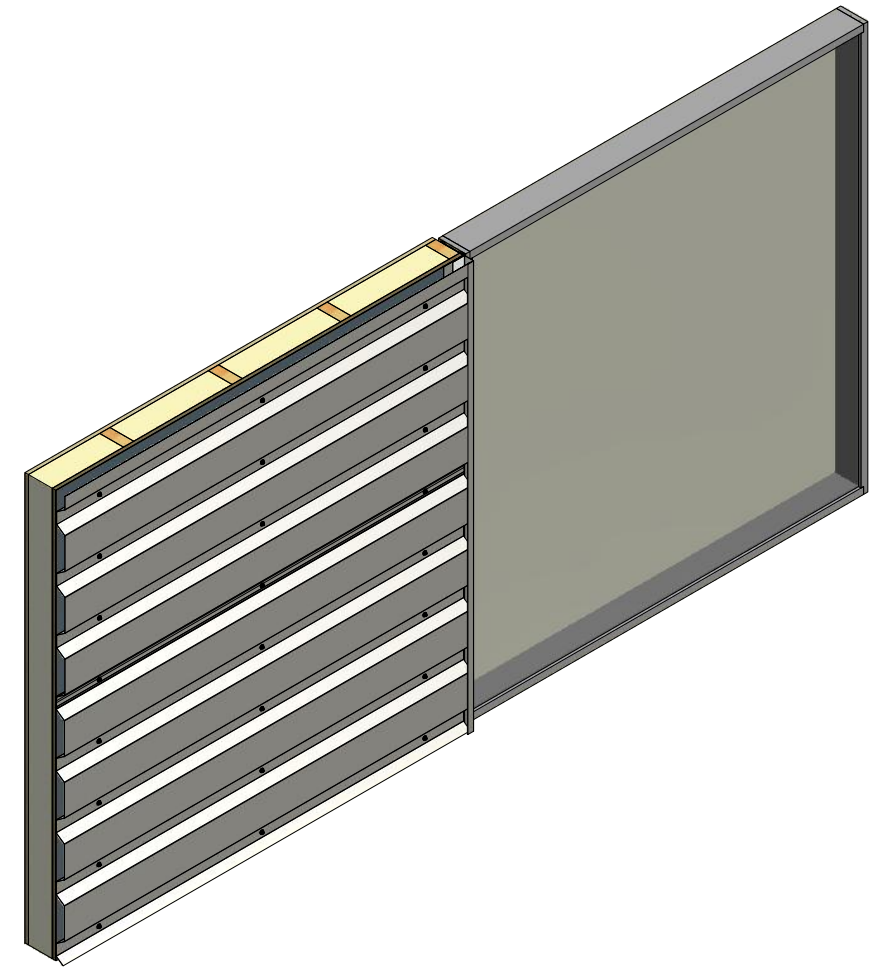
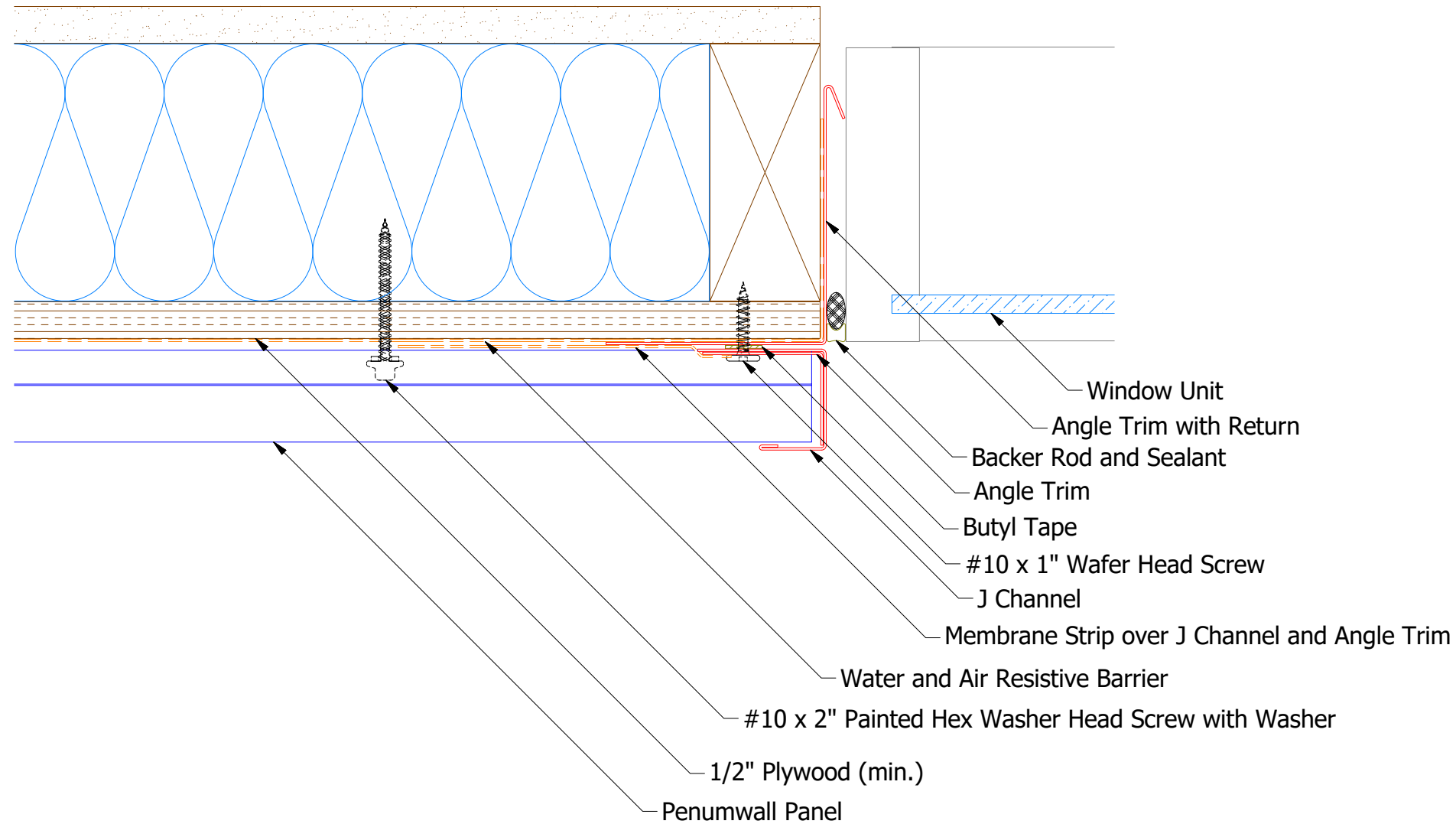


**ATAS** ATAS INTERNATIONAL, INC  
 Allentown PA  
 610-395-8445  
 Mesa AZ  
 480-558-7210

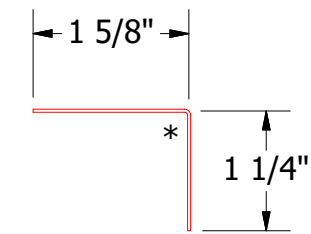
Note: \* denotes color side.

TITLE				PenumWall Head Flange Detail	
REV. NO.	DATE	DESCRIPTION OF REVISION	BY	APP	MATERIAL
01	3/18/2021	Added Support Z and color side note.	KRK		
DWG. NO.				DR	DATE
				DMR	12/4/2020
				APP	DATE
				SH. SIZE	B
				SCALE	X:X

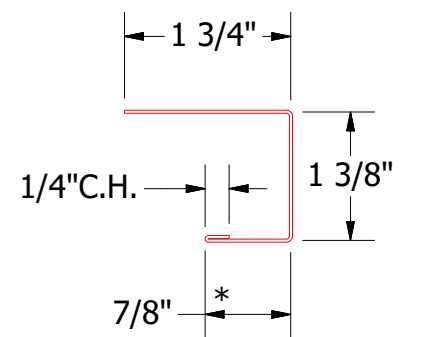
# Horizontal Panel



**BPA683 - Angle Trim with Return**



**BPA680 - Angle Trim**



**BPA138 - J Channel**

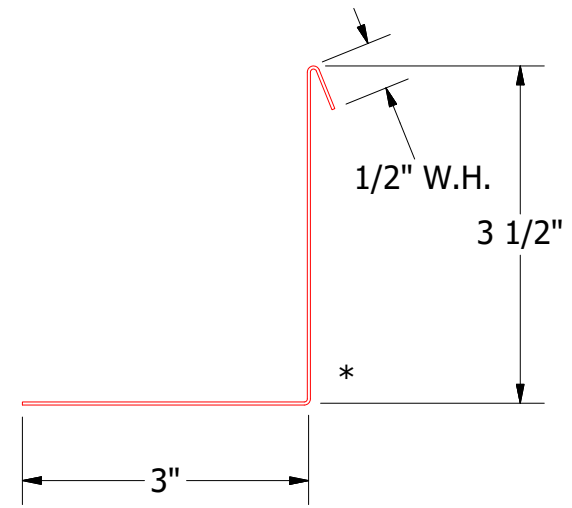
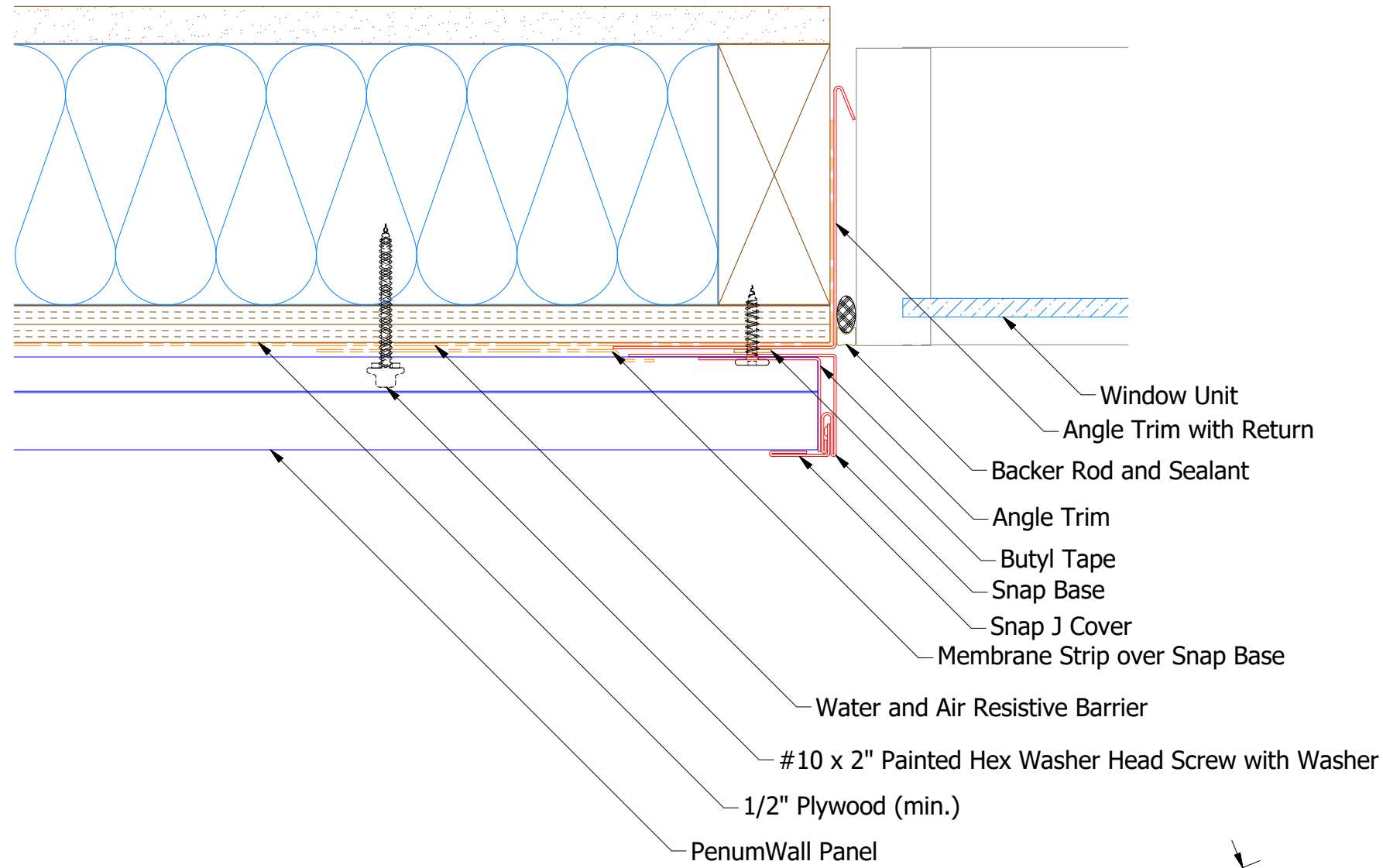
**ATAS** ATAS INTERNATIONAL, INC  
 Allentown PA  
 610-395-8445  
 Mesa AZ  
 480-558-7210

TITLE **PenumWall Jamb Detail**

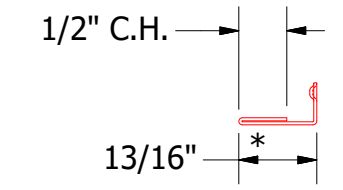
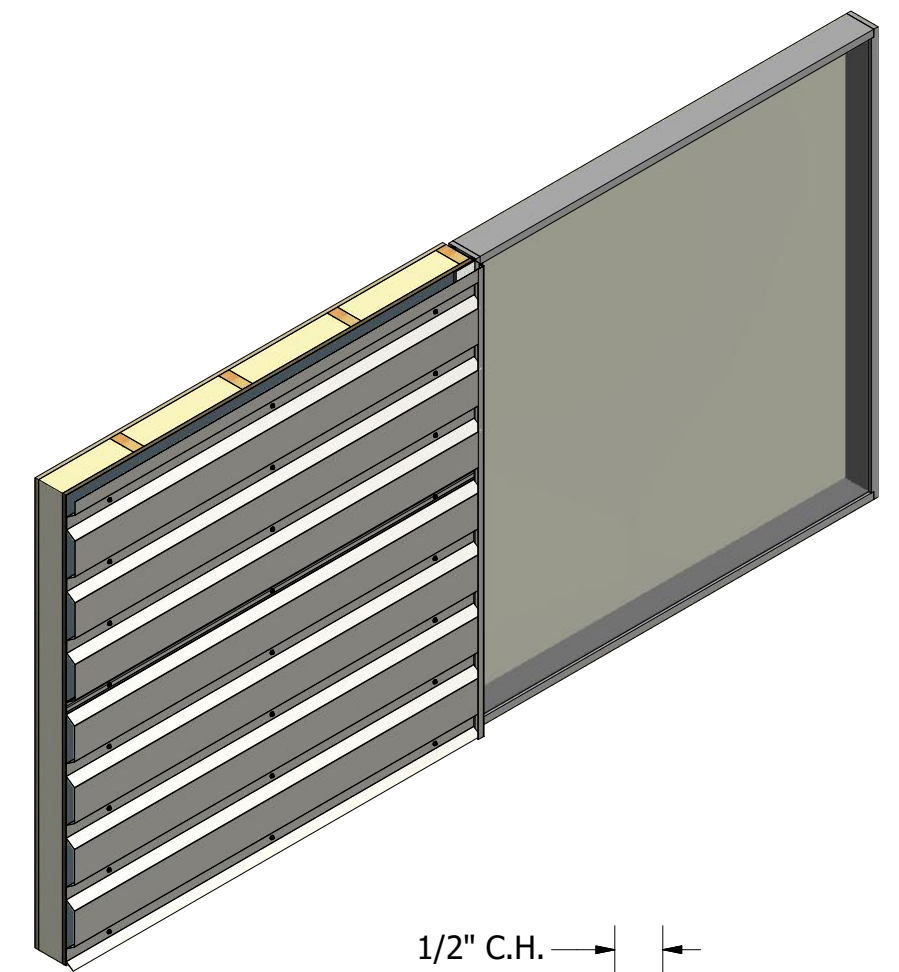
01	3/18/2021	Added color side note.	KRK	DR	KRK	DATE	12/22/2015
REV. NO.	DATE	DESCRIPTION OF REVISION	BY	APP	DAS	DATE	7/16/20
					SH. SIZE	B	SCALE
							X:X

Note: \* denotes color side.

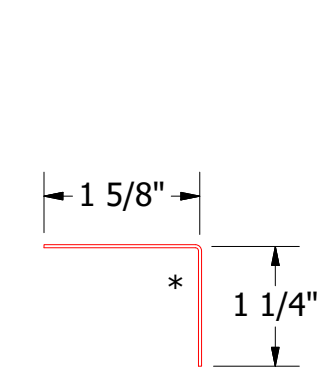
# Horizontal Panel - Alternate



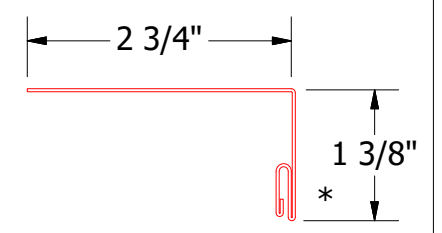
**BPA683 - Angle Trim with Return**



**UNS078 - Snap J Cover**



**BPA680 - Angle Trim**



**BPA139 - Snap Base**

Note: \* denotes color side.

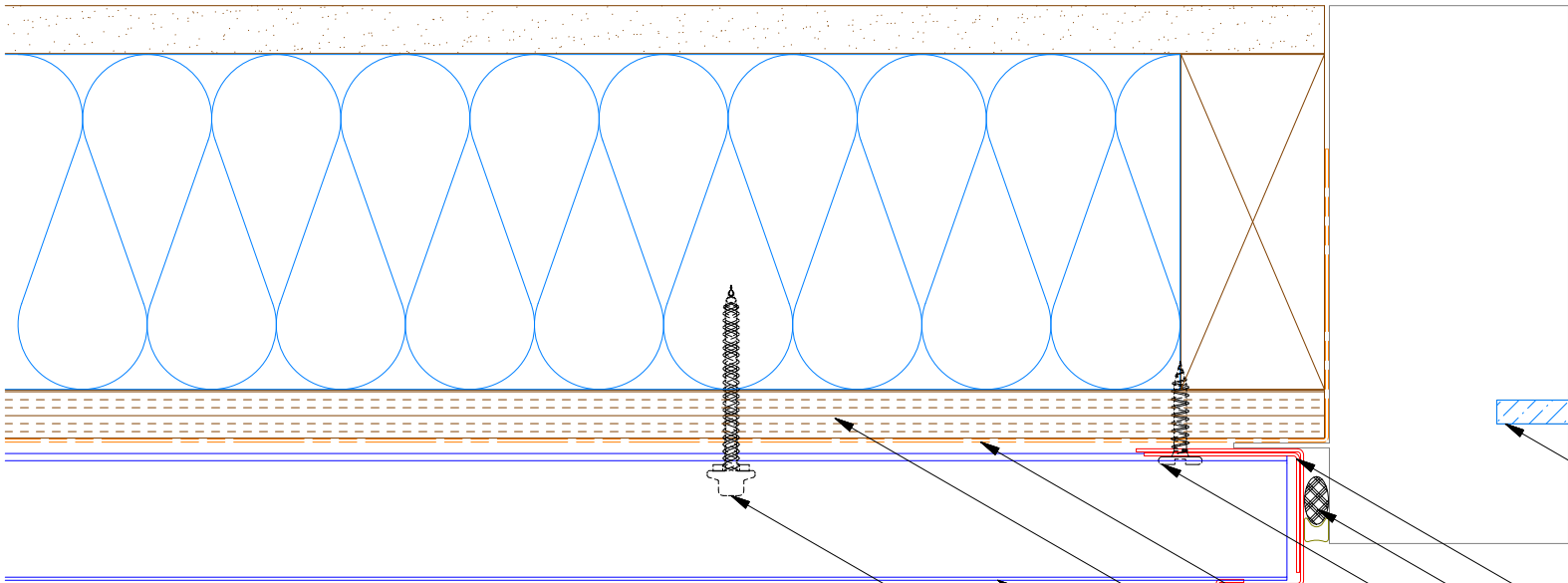
ATAS INTERNATIONAL, INC Allentown PA 610-395-8445 Mesa AZ 480-558-7210		TITLE	
		PenumWall Jamb Alt Detail	
DWG. NO.	DR	DATE	
01	KRK	12/22/2015	
REV. NO.	APP	DATE	
01	DAS	7/16/20	
DATE	SH. SIZE	SCALE	
	B	X:X	

REV. NO.	DATE	DESCRIPTION OF REVISION	BY	APP
01	3/18/2021	Added color side note and updated Trim SKU's.	KRK	

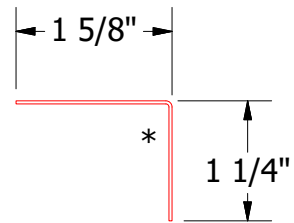
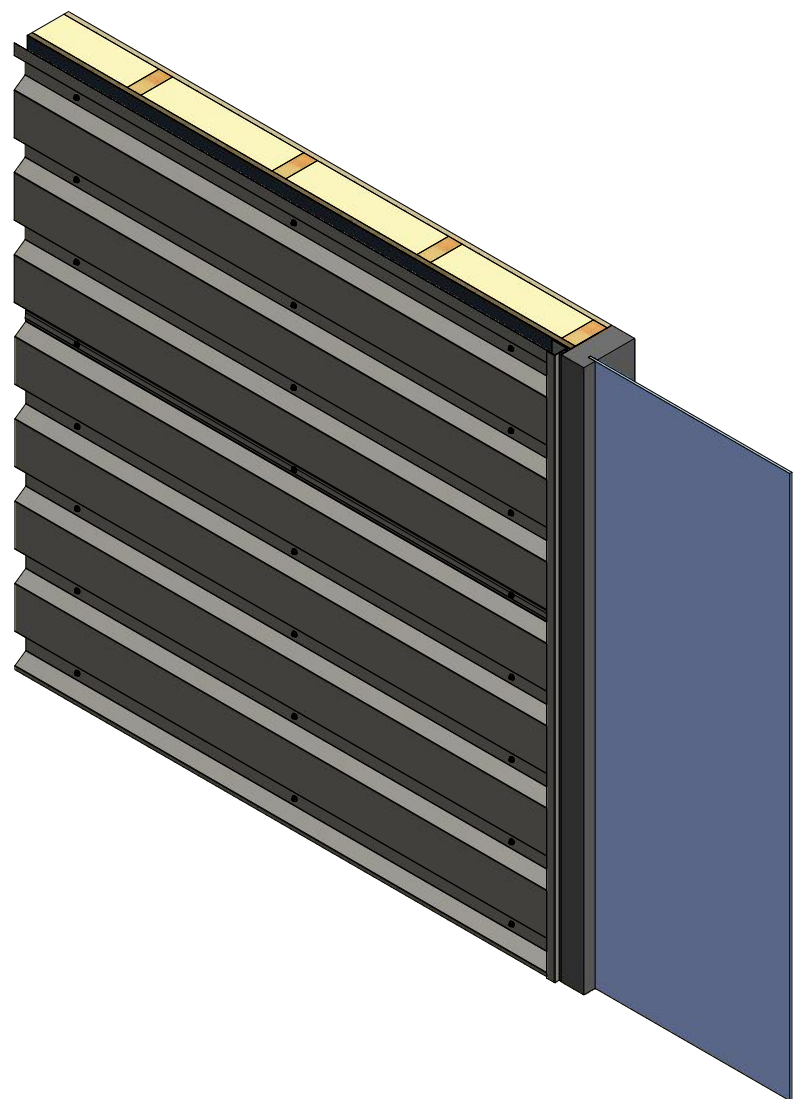




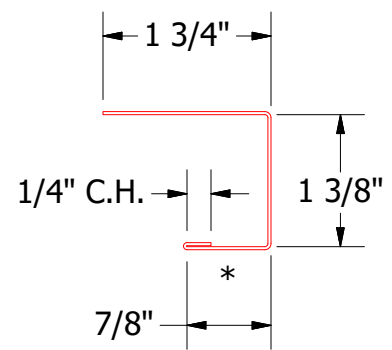
# Horizontal Panel



- Window
- Angle Trim
- Backer Rod and Sealant
- #10 x 1" Wafer Head Fastener
- J Channel
- Water and Air Resistive Barrier
- 1/2" Plywood (min.)
- PenumWall Panel
- #10 x 2" Painted Hex Washer Head Fastener




**BPA680 - Angle Trim**



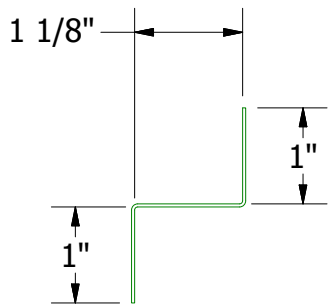
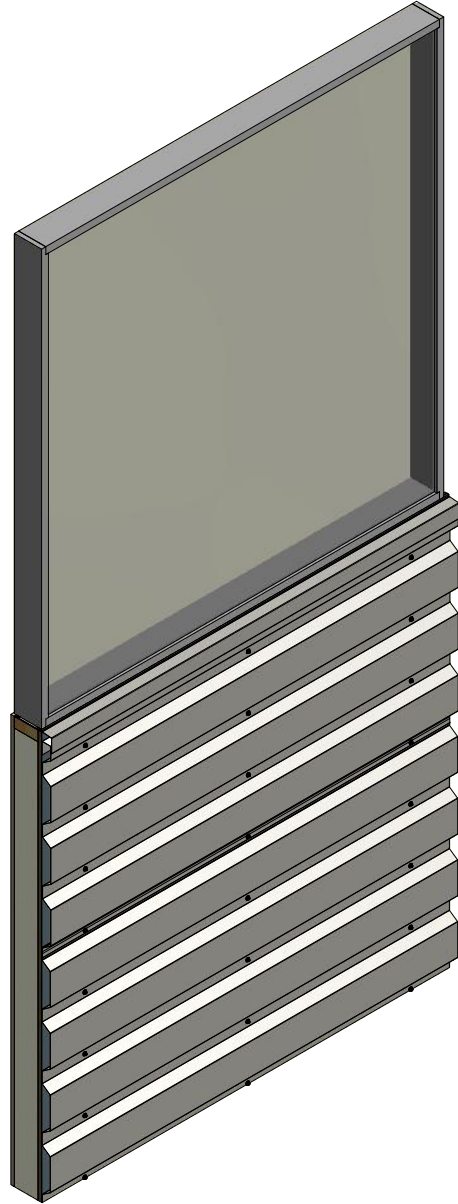
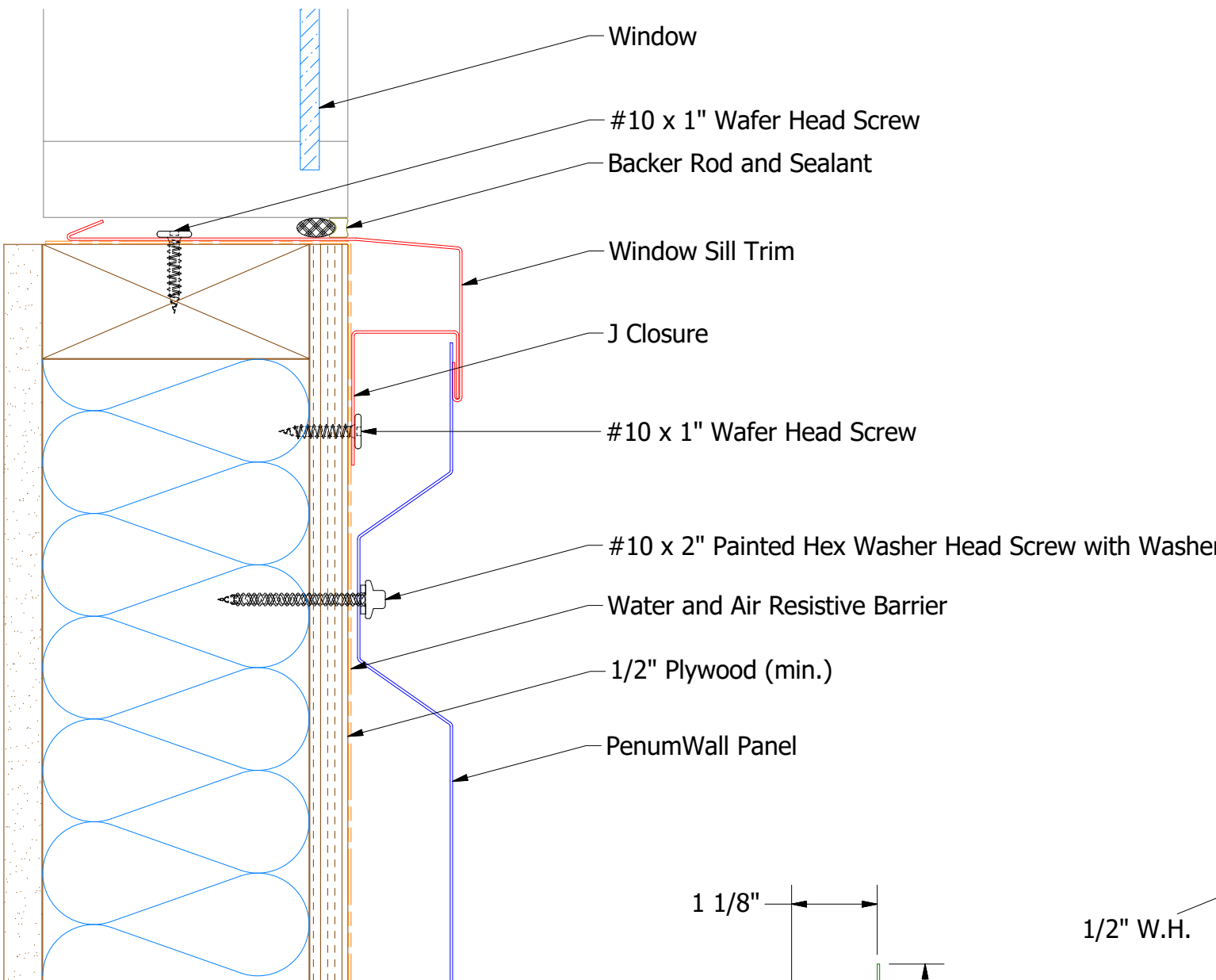
**BPA158 - J Channel**

Note: \* denotes color side.

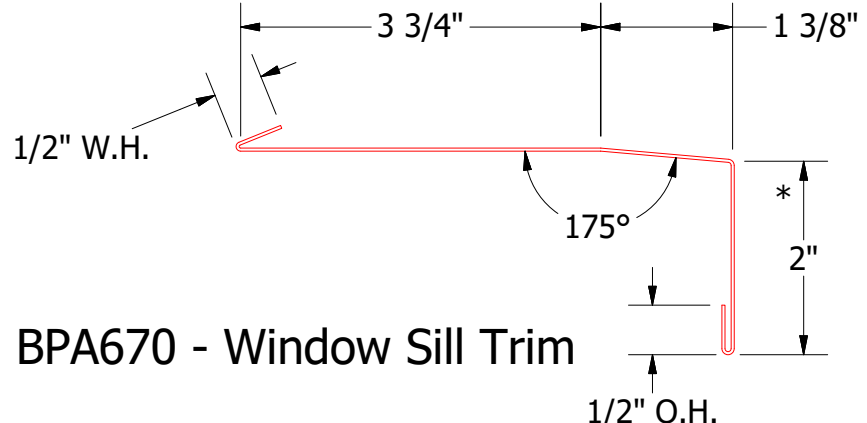
 <b>ATAS INTERNATIONAL, INC</b> Allentown PA 610-395-8445 Mesa AZ 480-558-7210	
TITLE <b>PenumWall Jamb Flange Detail</b>	
DWG. NO.	DR <b>DMR</b> DATE <b>7/26/2018</b>
REV. NO.	APP DATE
SH. SIZE <b>B</b>	SCALE <b>X:X</b>

REV. NO.	DATE	DESCRIPTION OF REVISION	BY	APP
01	3/22/2021	Added color side note.	KRK	

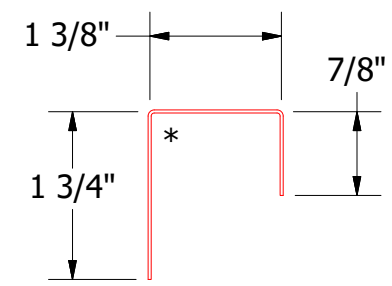
# Horizontal Panel



**BPA681 - Support Z**  
(if conditions apply)



**BPA670 - Window Sill Trim**



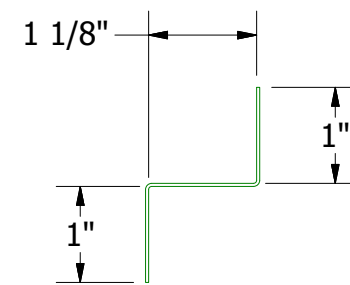
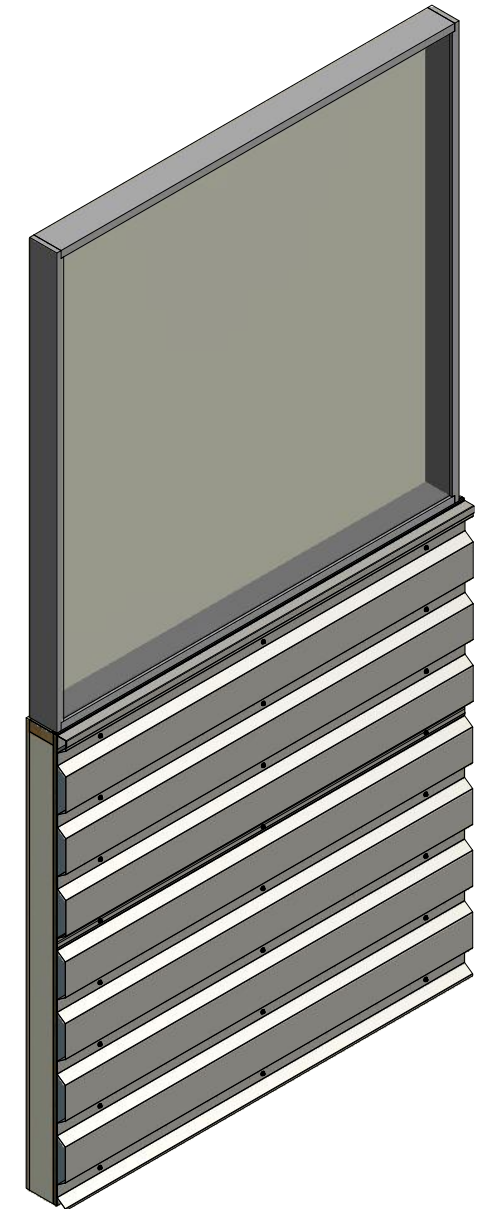
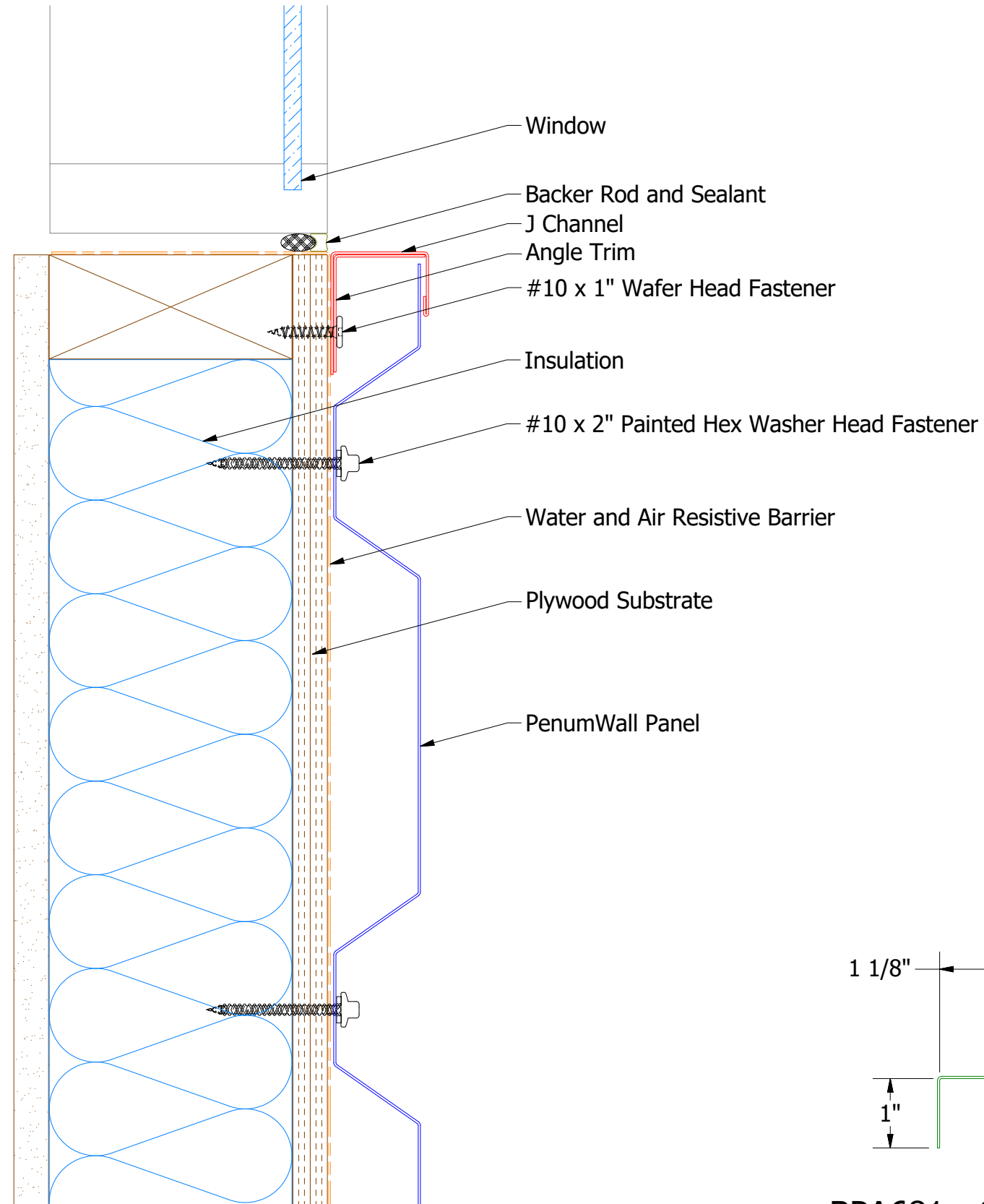
**BPA270 - J Closure**

		<b>ATAS INTERNATIONAL, INC</b> Allentown PA 610-395-8445 Mesa AZ 480-558-7210	
TITLE <b>PenumWall Window Sill Detail</b>			
DWG. NO.	DR	KRK	DATE 12/17/2015
REV. NO.	APP	DAS	DATE 7/16/20
REV. NO.	DATE	DESCRIPTION OF REVISION	BY APP
	SH. SIZE	B	SCALE X:X

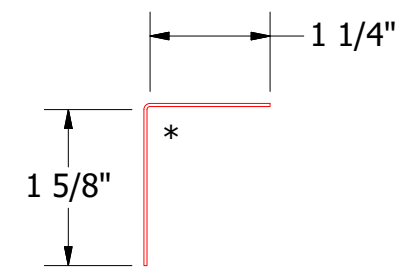
Note: \* denotes color side.

01	3/23/2021	Added Support Z and color side note.	KRK
REV. NO.	DATE	DESCRIPTION OF REVISION	BY APP

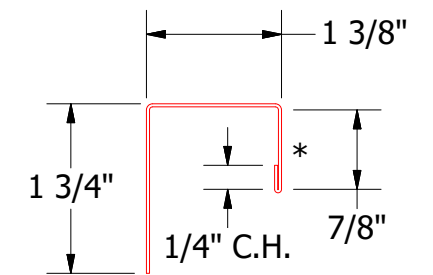
# Horizontal Panel



BPA681 - Support Z  
(if conditions apply)



BPA680 - Angle Trim



BPA158 - J Channel

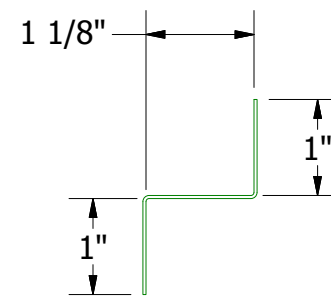
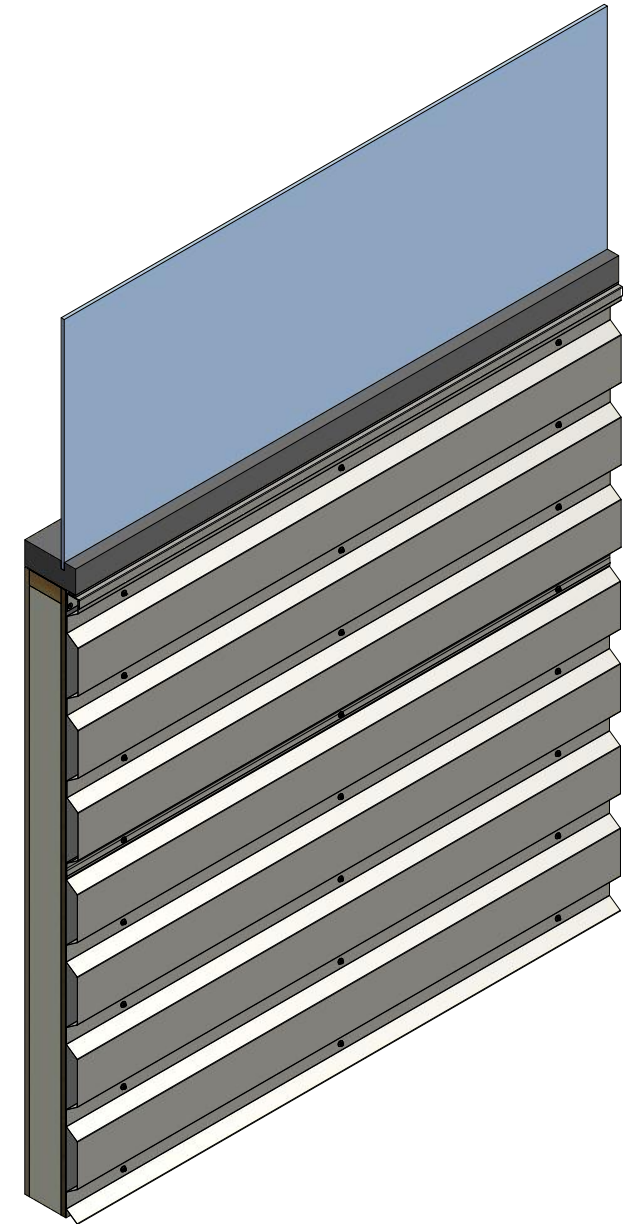
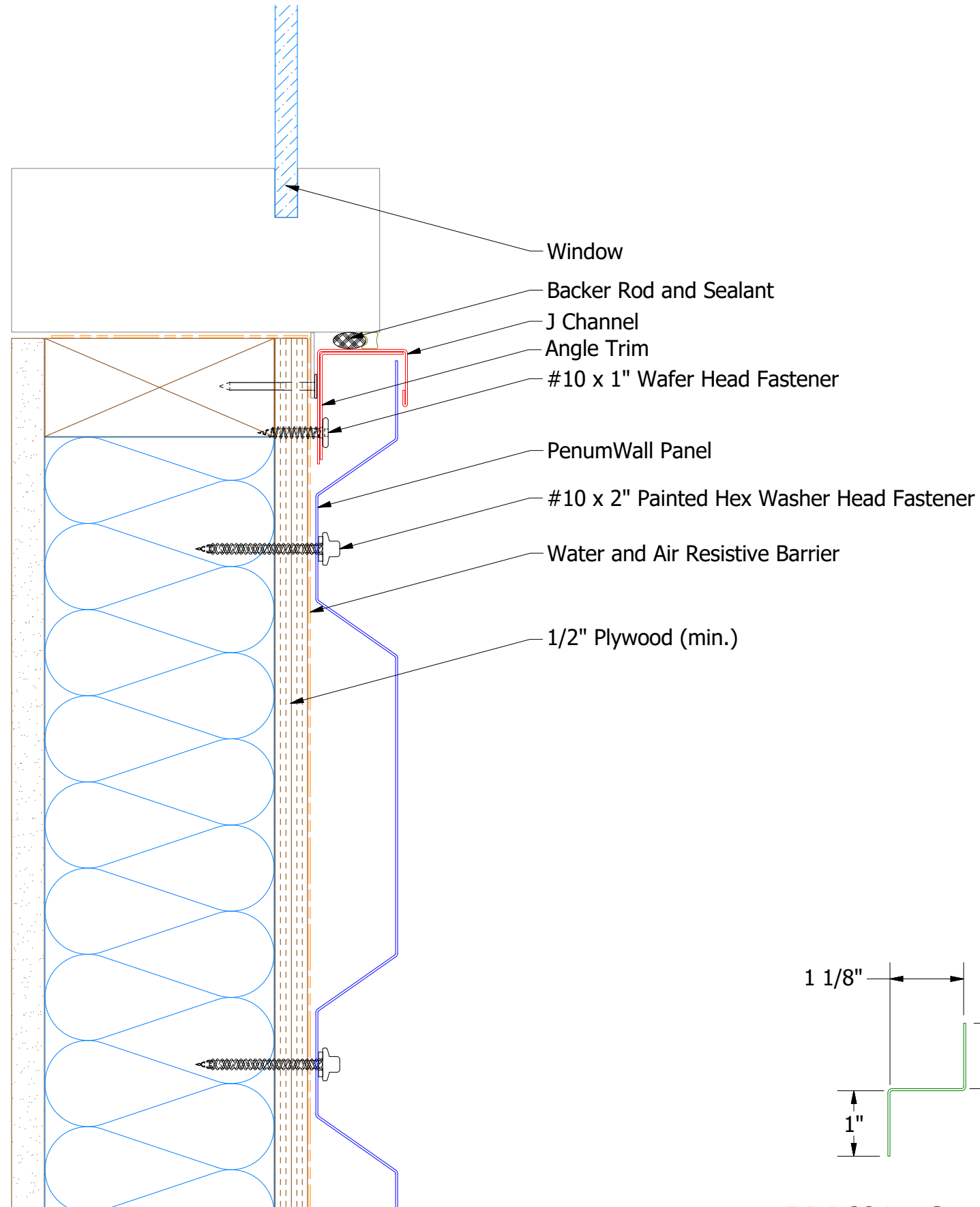
**ATAS INTERNATIONAL, INC**  
 Allentown PA  
 610-395-8445  
 Mesa AZ  
 480-558-7210

REV. NO.		DATE		DESCRIPTION OF REVISION		BY		APP		MATERIAL		SH. SIZE		SCALE	
01		3/23/2021		Added Support Z and color side note.		KRK				DR		DMR		DATE 6/7/2018	
										APP		DATE			
										SH. SIZE		B		SCALE X:X	

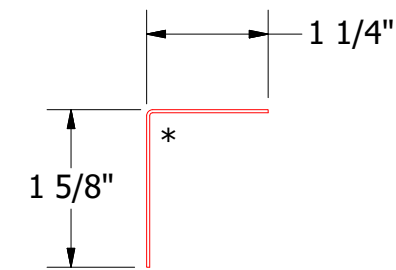
Note: \* denotes color side.

PenumWall Existing Window Sill Detail

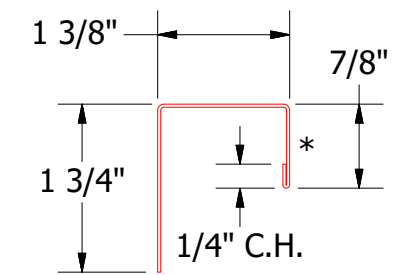
# Horizontal Panel



**BPA681 - Support Z**  
(if conditions apply)



**BPA680 - Angle Trim**



**BPA158 - J Channel**

Note: \* denotes color side.

**ATAS** ATAS INTERNATIONAL, INC  
Allentown PA  
610-395-8445  
Mesa AZ  
480-558-7210

TITLE				PenumWall Window Sill Flange Detail			
REV. NO.	DATE	DESCRIPTION OF REVISION	BY	APP	DR	DATE	APP
01	3/23/2021	Added Support Z and color side note.	KRK		DMR	9/21/2018	
					SH. SIZE	B	SCALE X:X