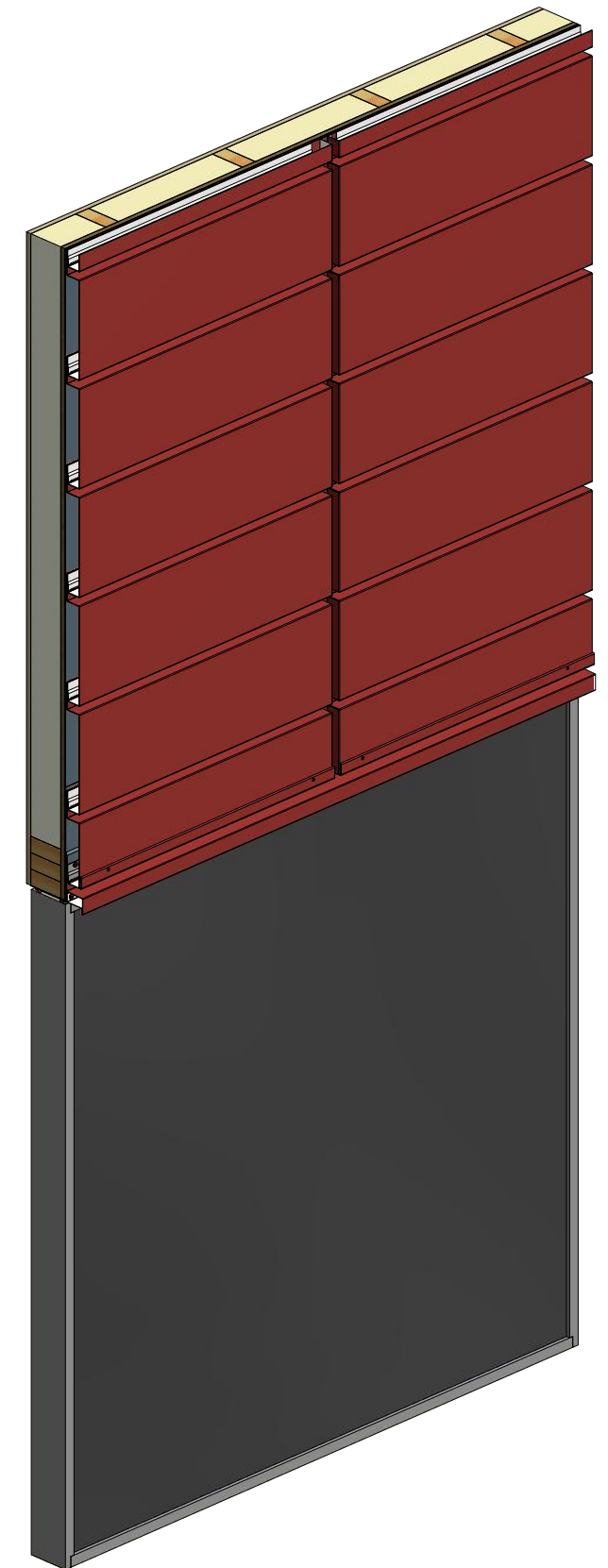
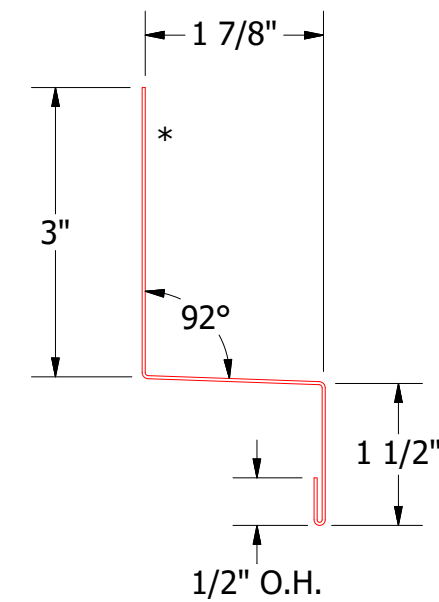
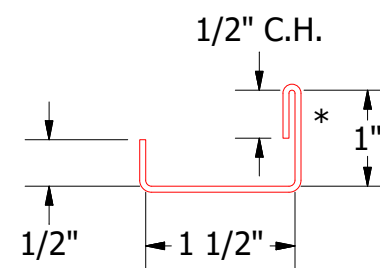
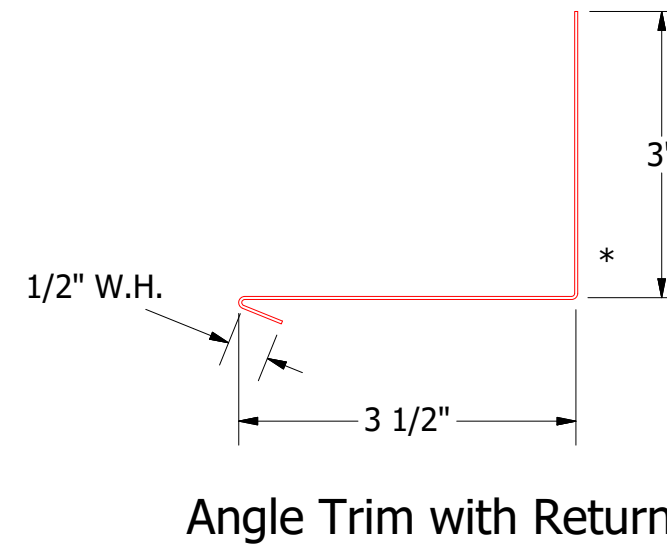
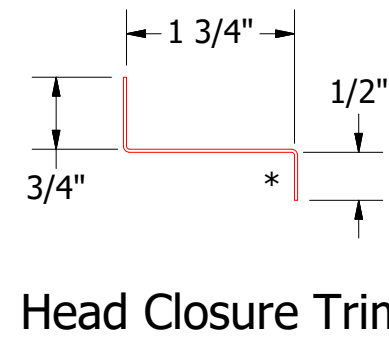
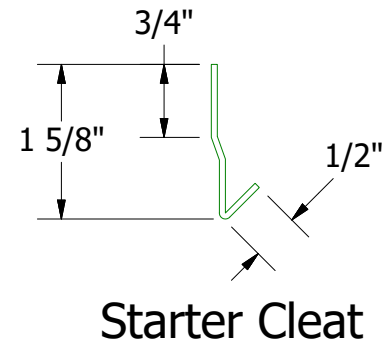


- Omawall Panel
- 3/4" Plywood (min.)
- Water and Air Resistive Barrier
- High Impact Plastic Shim (as required)
- Membrane Strip
- Starter Cleat
- VHB Tape (install per manufacture recommendations)
- S.S. Painted Pop Rivets (at start and end of VHB Tape run)
- Panel Trim
- Angle Trim with Return
- Butyl Sealant Tape
- #10 x 1" Wafer Head Screw
- Head Closure Trim
- Head Trim
- Backer Rod and Sealant
- Window Unit



Note: * denotes color side.

					TITLE Omawall Head Detail			
					DWG. NO.		DR KRK	DATE 1/27/2021
01	10/8/2021	Added VHB Tape and Changed Membrane Strip Location.		KRK	MATERIAL		APP	DATE
REV. NO.	DATE	DESCRIPTION OF REVISION		BY	APP	SH. SIZE B		SCALE X:X