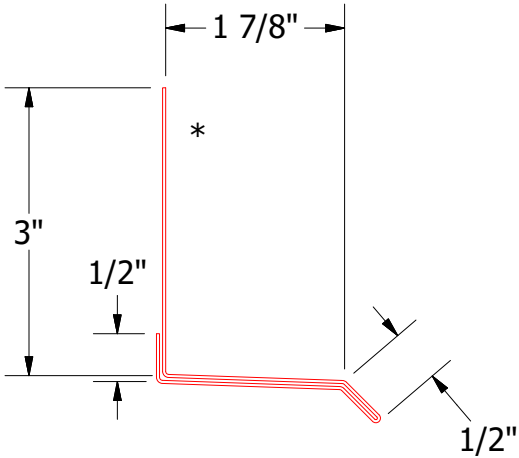



Starter Cleat



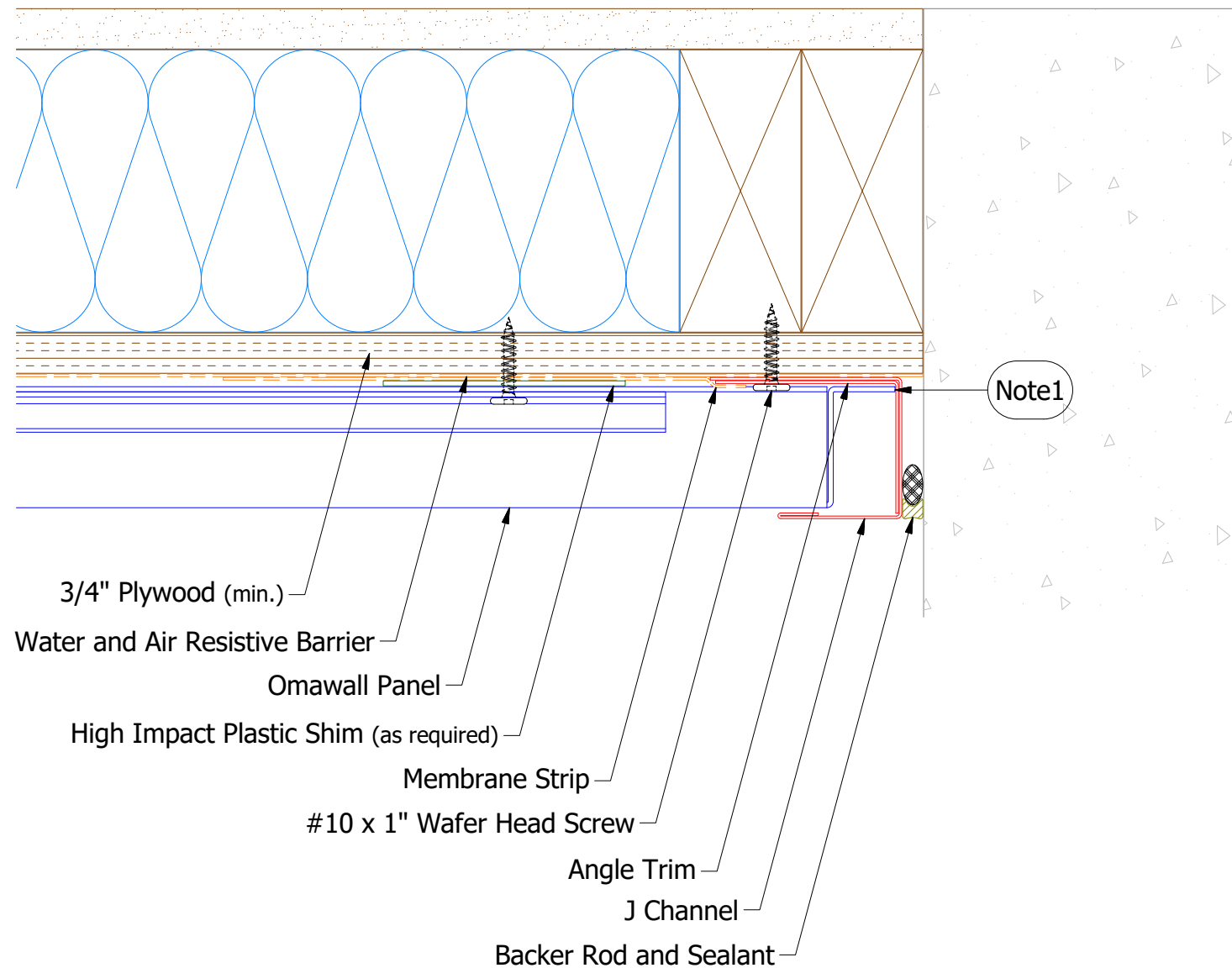
Base Trim



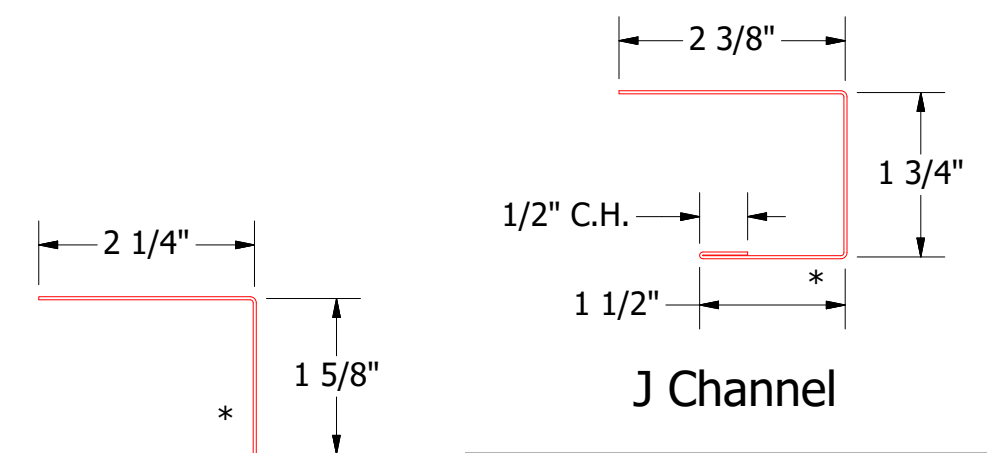
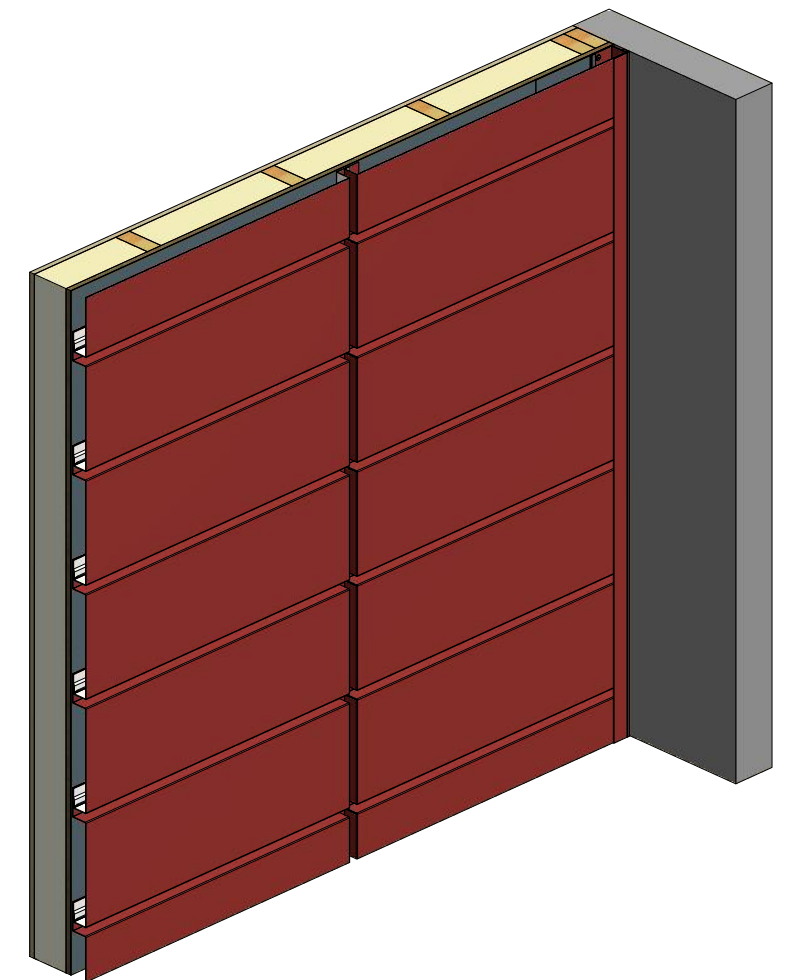
ATAS INTERNATIONAL, INC  
Allentown PA  
610-395-8445  
Mesa AZ  
480-558-7210

TITLE Omawall Base Detail			
DWG. NO.		DR KRK	DATE 1/26/2021
MATERIAL		APP	DATE
REV. NO.	DATE	DESCRIPTION OF REVISION	BY APP
01	10/8/2021	Updated Membrane Strip Location	KRK
SH. SIZE	B	SCALE	X:X

Note: \* denotes color side.



Note: \* denotes color side.  
 Note1: Cut Back Panel Edge.

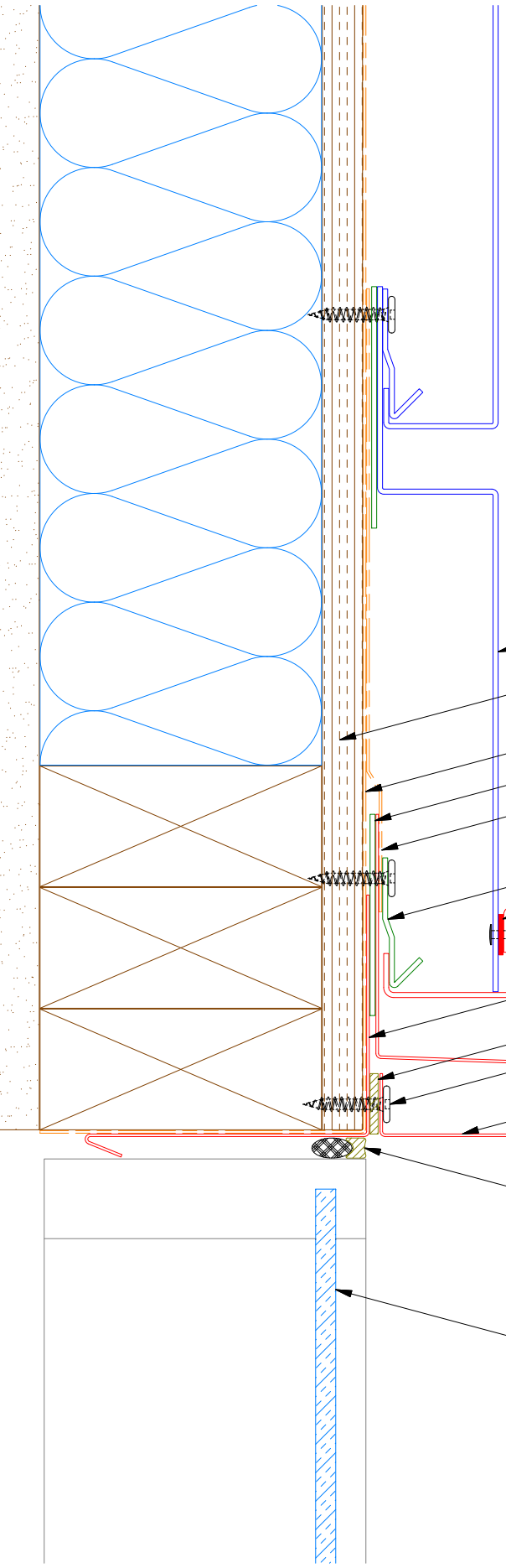


Angle Trim

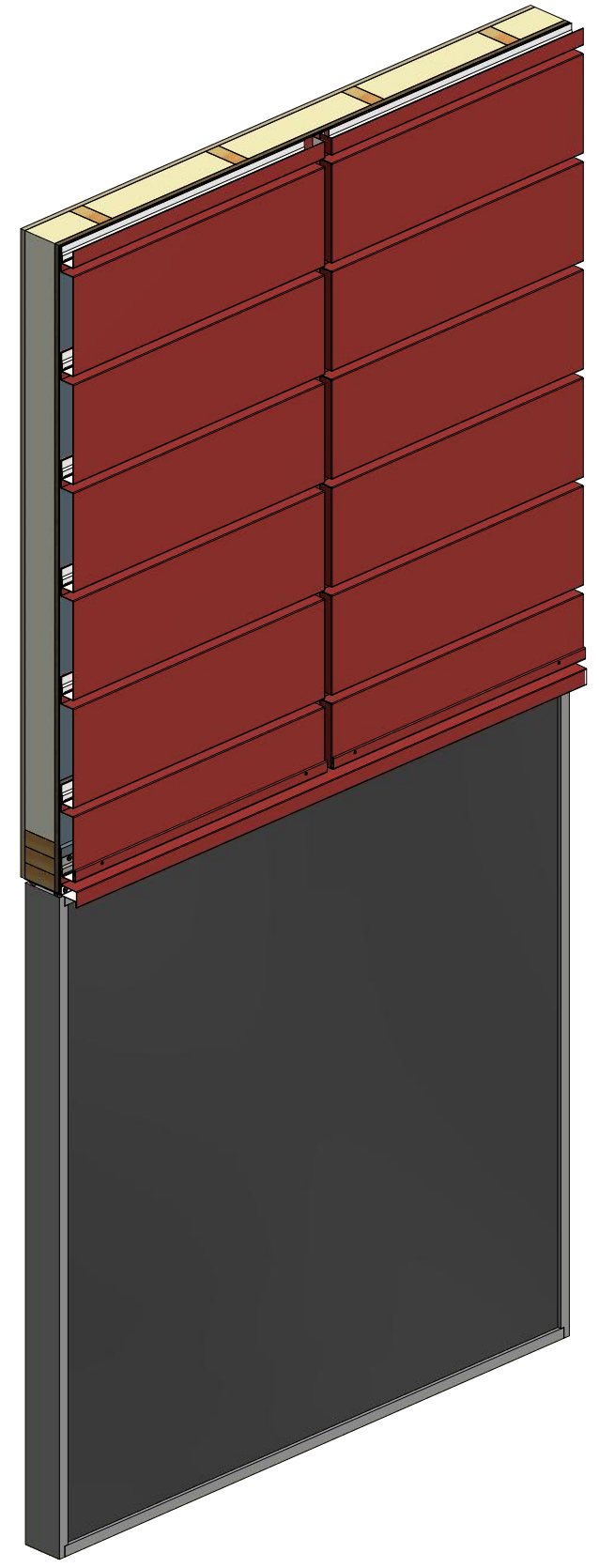
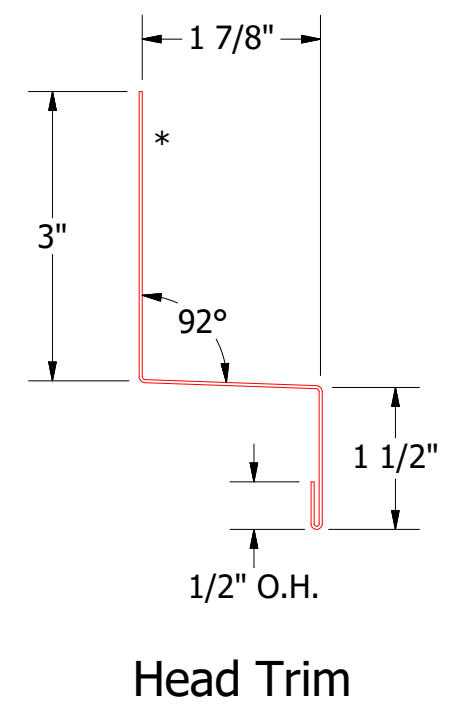
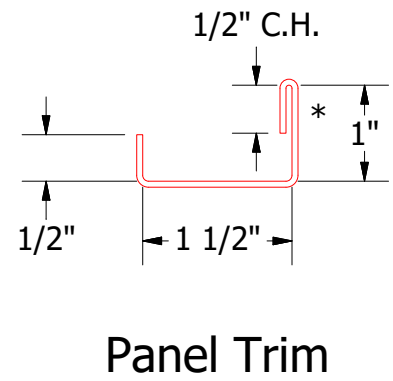
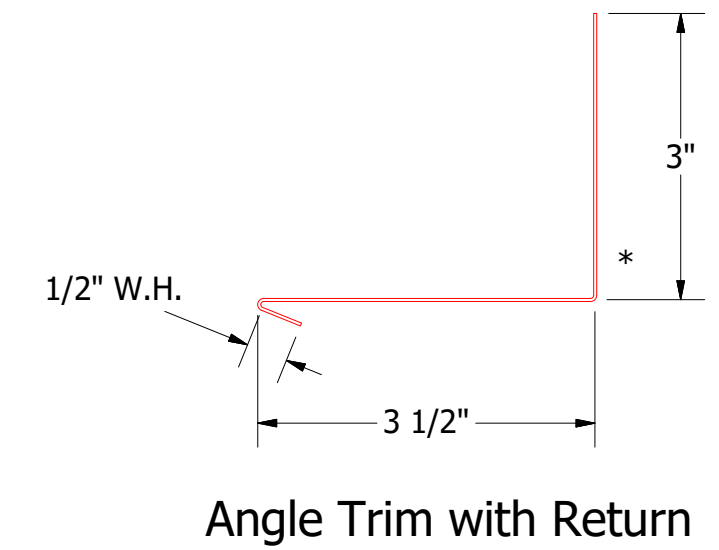
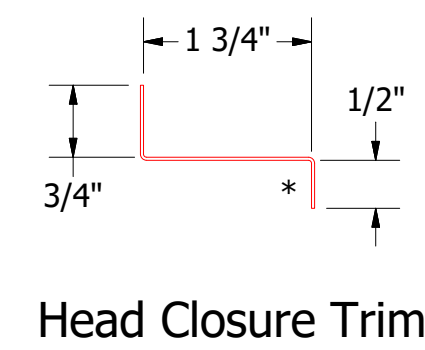
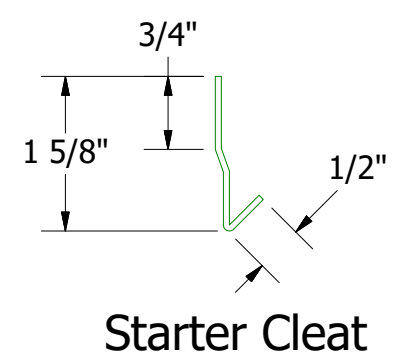
J Channel

**ATAS** ATAS INTERNATIONAL, INC  
 Allentown PA  
 610-395-8445  
 Mesa AZ  
 480-558-7210

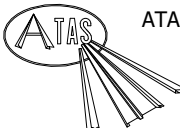
				TITLE		Omawall Endwall Detail	
				DWG. NO.	DR	KRK	DATE 1/26/2021
					APP		DATE
				MATERIAL		SH. SIZE	B SCALE X:X
REV. NO.	DATE	DESCRIPTION OF REVISION		BY	APP		



- Omawall Panel
- 3/4" Plywood (min.)
- Water and Air Resistive Barrier
- High Impact Plastic Shim (as required)
- Membrane Strip
- Starter Cleat
- VHB Tape (install per manufacture recommendations)
- S.S. Painted Pop Rivets (at start and end of VHB Tape run)
- Panel Trim
- Angle Trim with Return
- Butyl Sealant Tape
- #10 x 1" Wafer Head Screw
- Head Closure Trim
- Head Trim
- Backer Rod and Sealant
- Window Unit

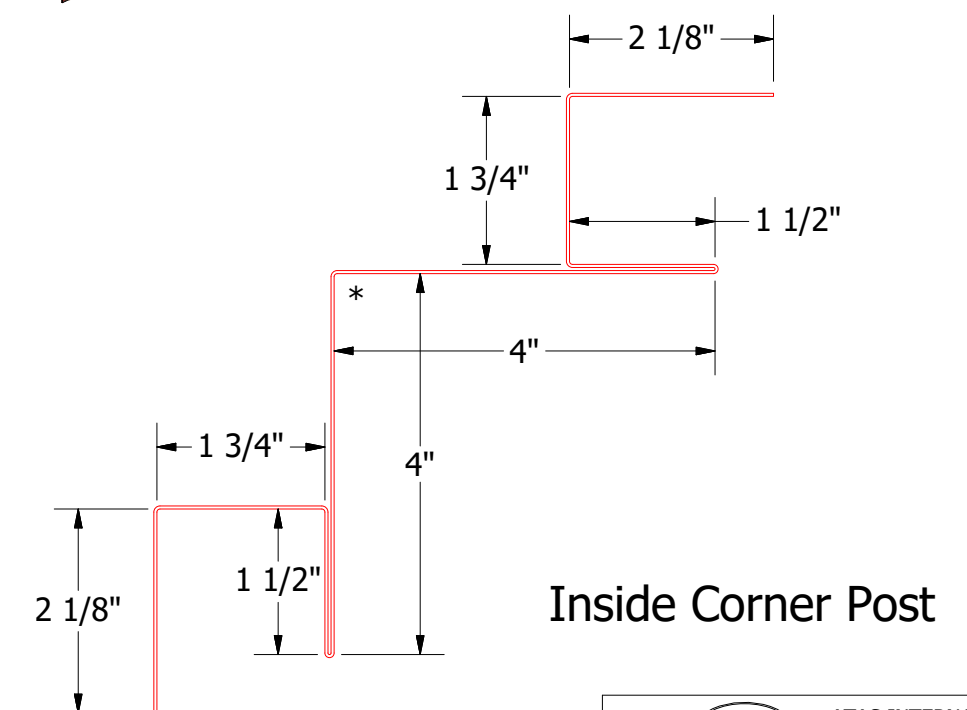
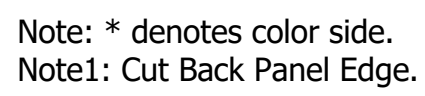


Note: \* denotes color side.

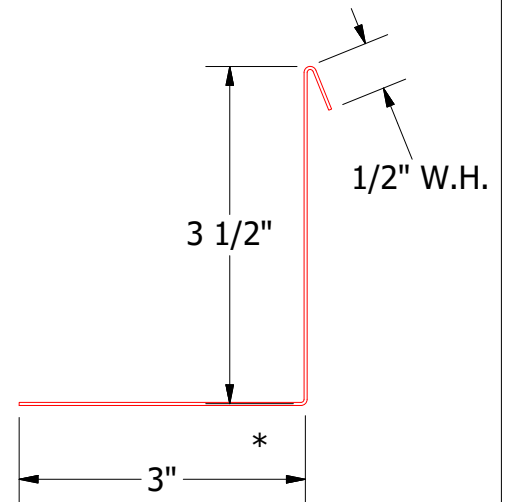
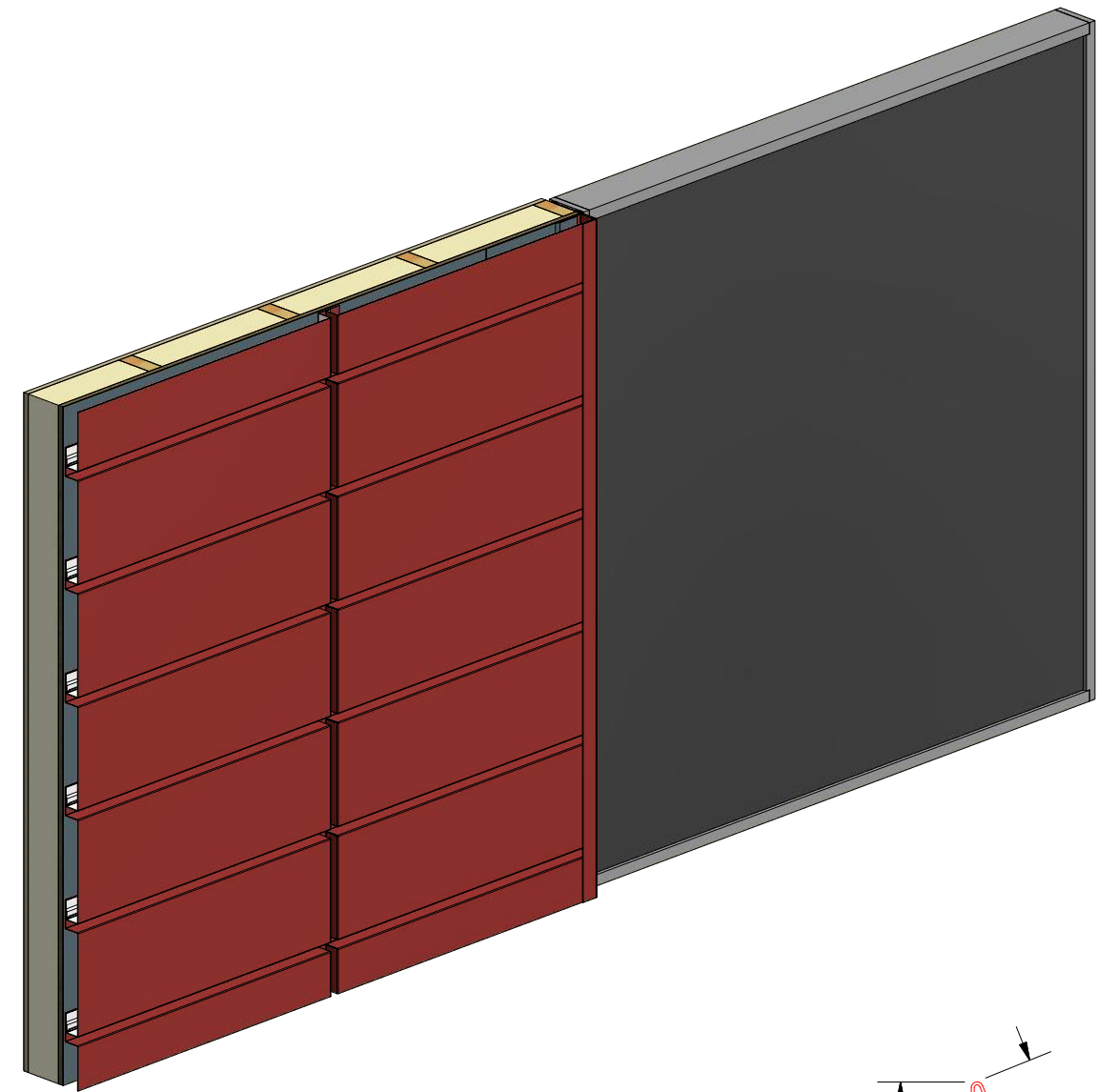
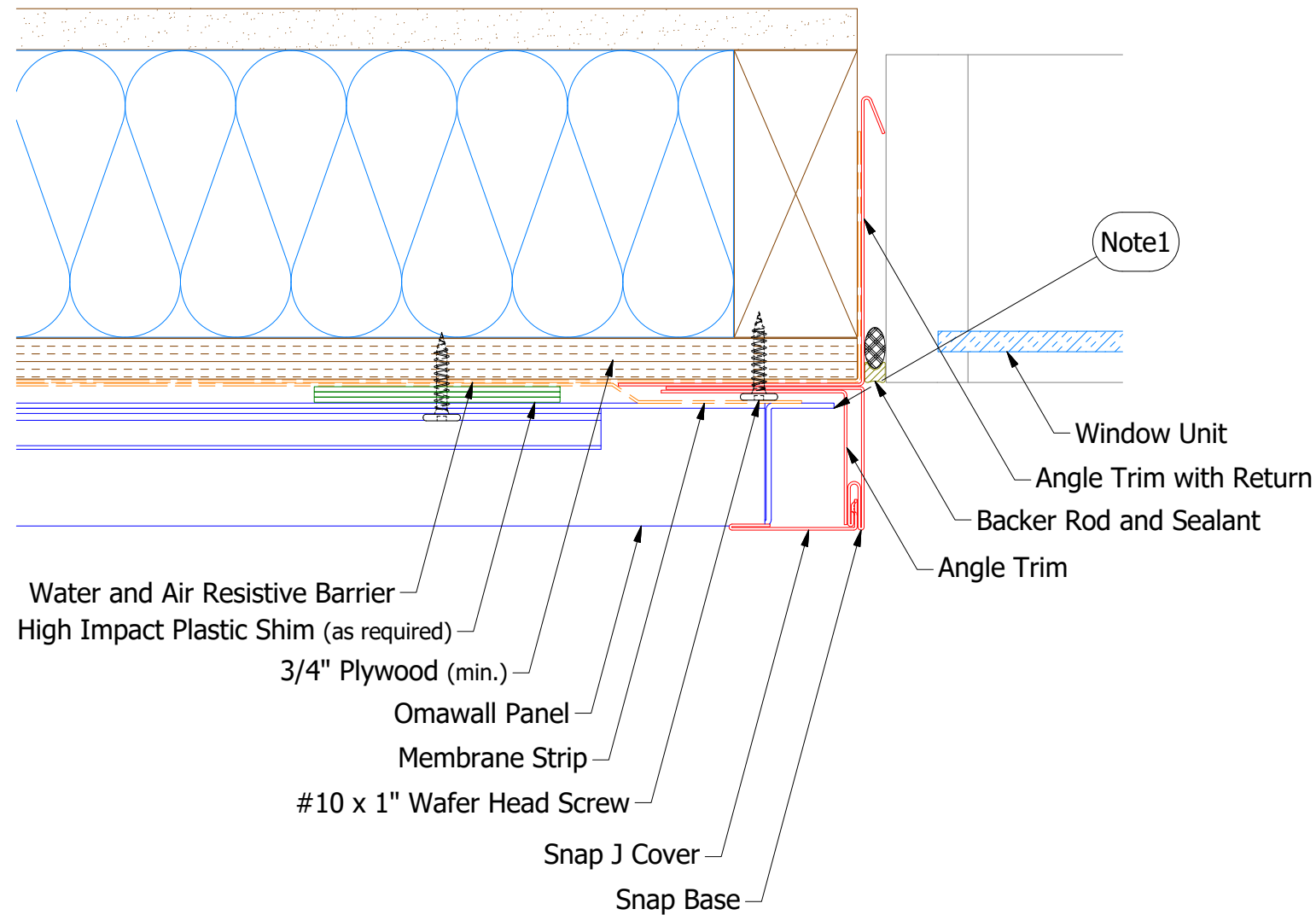


ATAS INTERNATIONAL, INC  
Allentown PA  
610-395-8445  
Mesa AZ  
480-558-7210

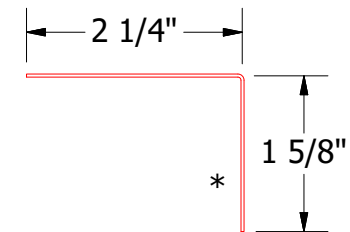
TITLE				Omawall Head Detail	
DWG. NO.		DR		KRK	DATE
01		10/8/2021		Added VHB Tape and Changed Membrane Strip Location.	
REV. NO.		DATE		DESCRIPTION OF REVISION	
BY		APP		MATERIAL	
SH. SIZE		B		SCALE	
				X:X	



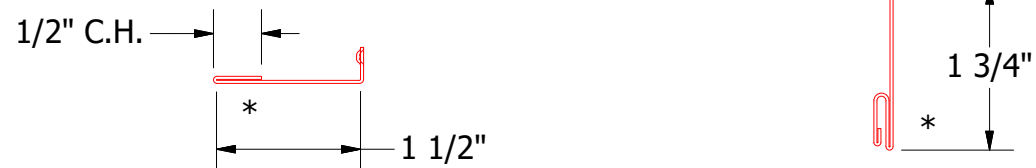
					TITLE <b>Omawall Inside Corner Detail</b>			
					DWG. NO.		DR <b>KRK</b>	DATE <b>1/27/2021</b>
					MATERIAL		APP	DATE
REV. NO.	DATE	DESCRIPTION OF REVISION			BY	APP	SH. SIZE <b>B</b>	SCALE <b>X:X</b>



Angle Trim with Return



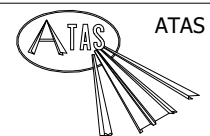
Angle Trim



Snap J Cover

Snap Base

Note: \* denotes color side.  
Note1: Cut Back Panel Edge.

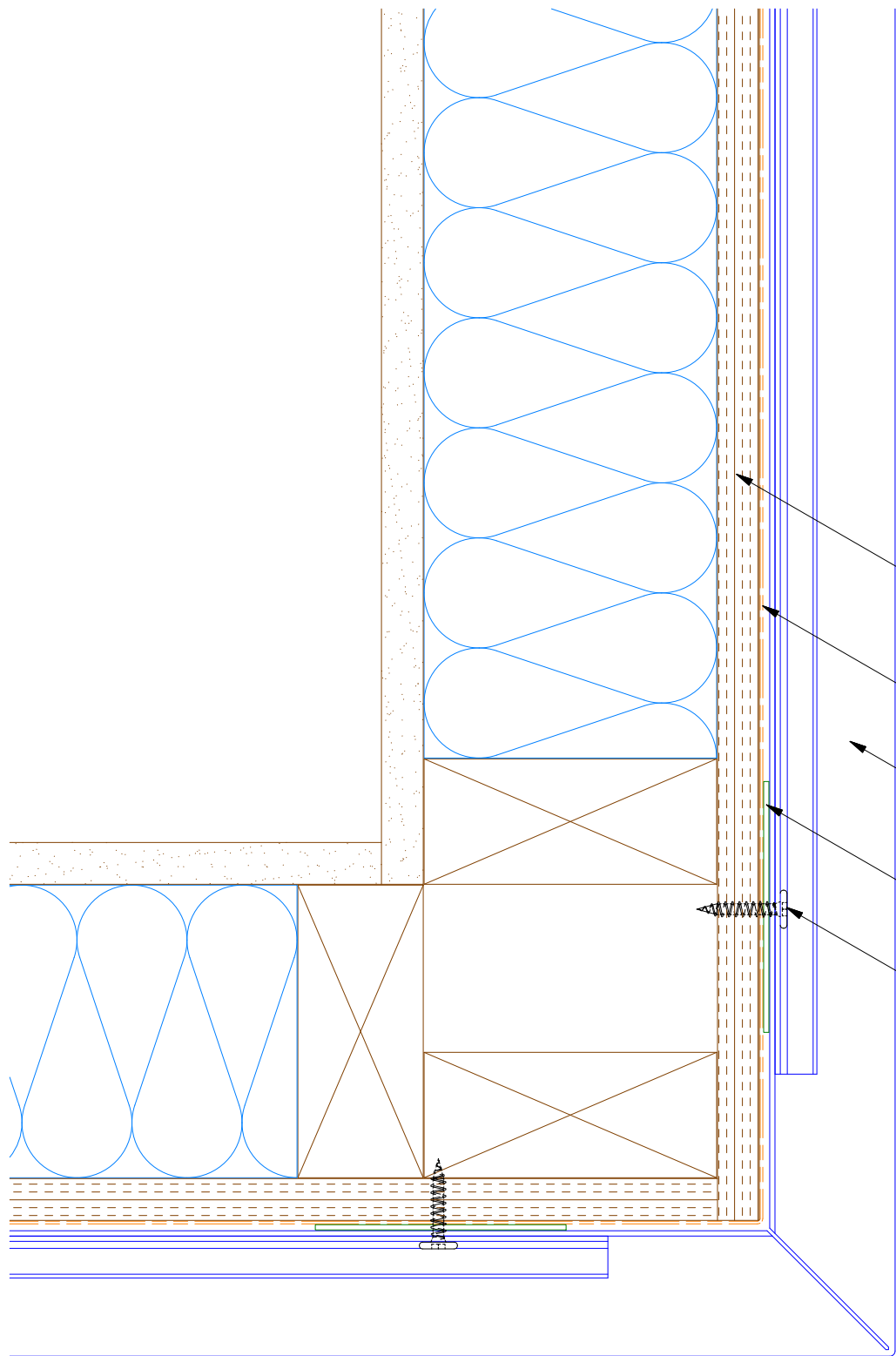


ATAS INTERNATIONAL, INC  
Allentown PA  
610-395-8445  
Mesa AZ  
480-558-7210

Omawall Jamb Detail

REV. NO.		DATE		DESCRIPTION OF REVISION		BY	APP	TITLE		DR	KRK	DATE	1/28/2021
								DWG. NO.		APP		DATE	
								MATERIAL		SH. SIZE	B	SCALE	X:X





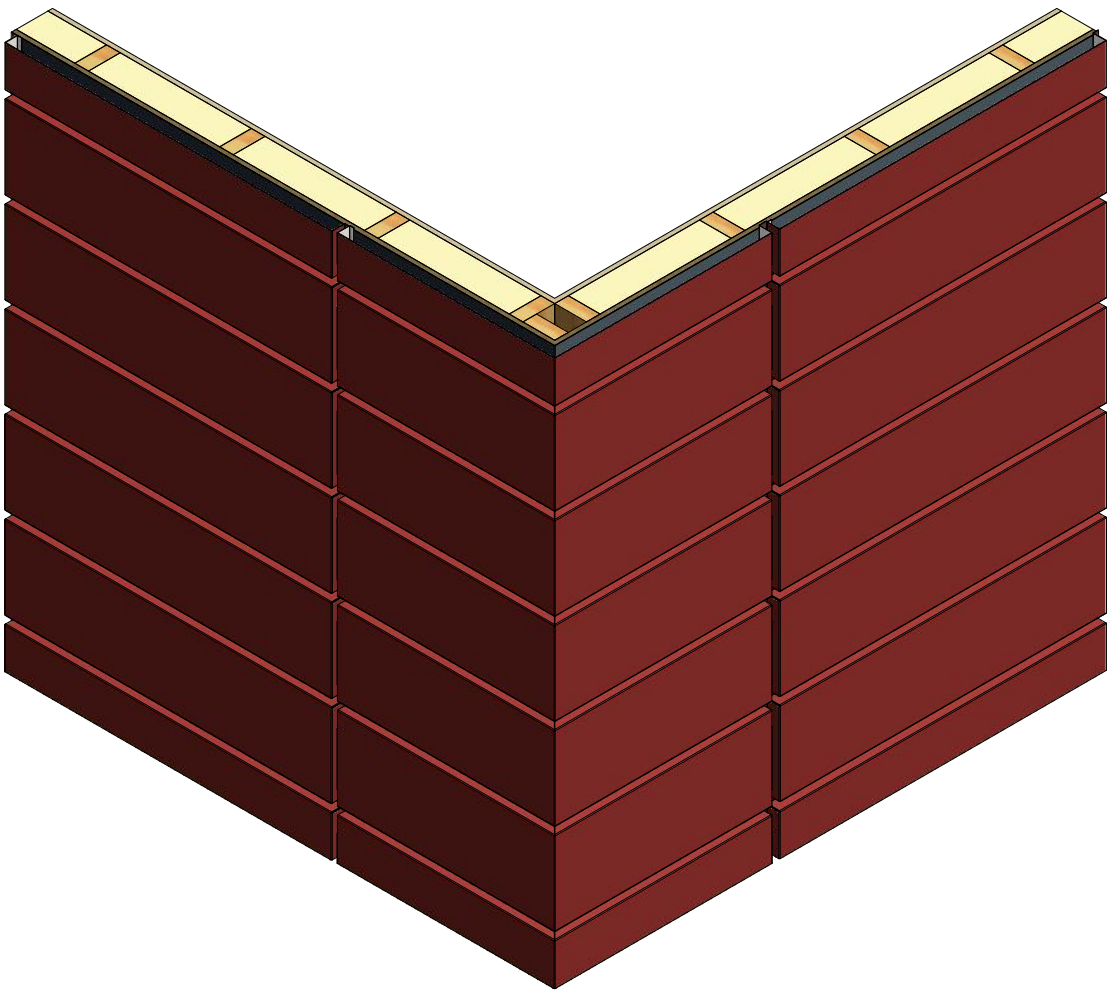
3/4" Plywood (min.)

Water and Air Resistive Barrier

Omawall Mitered Corner Panel

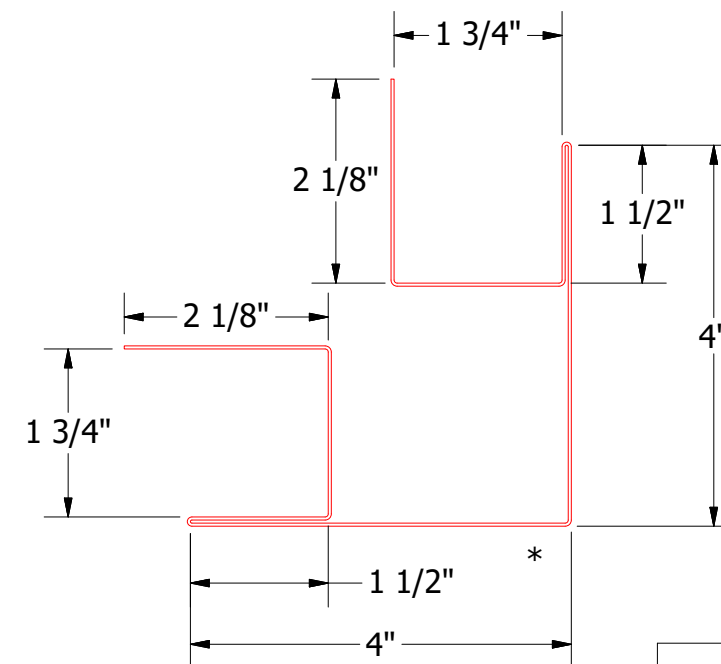
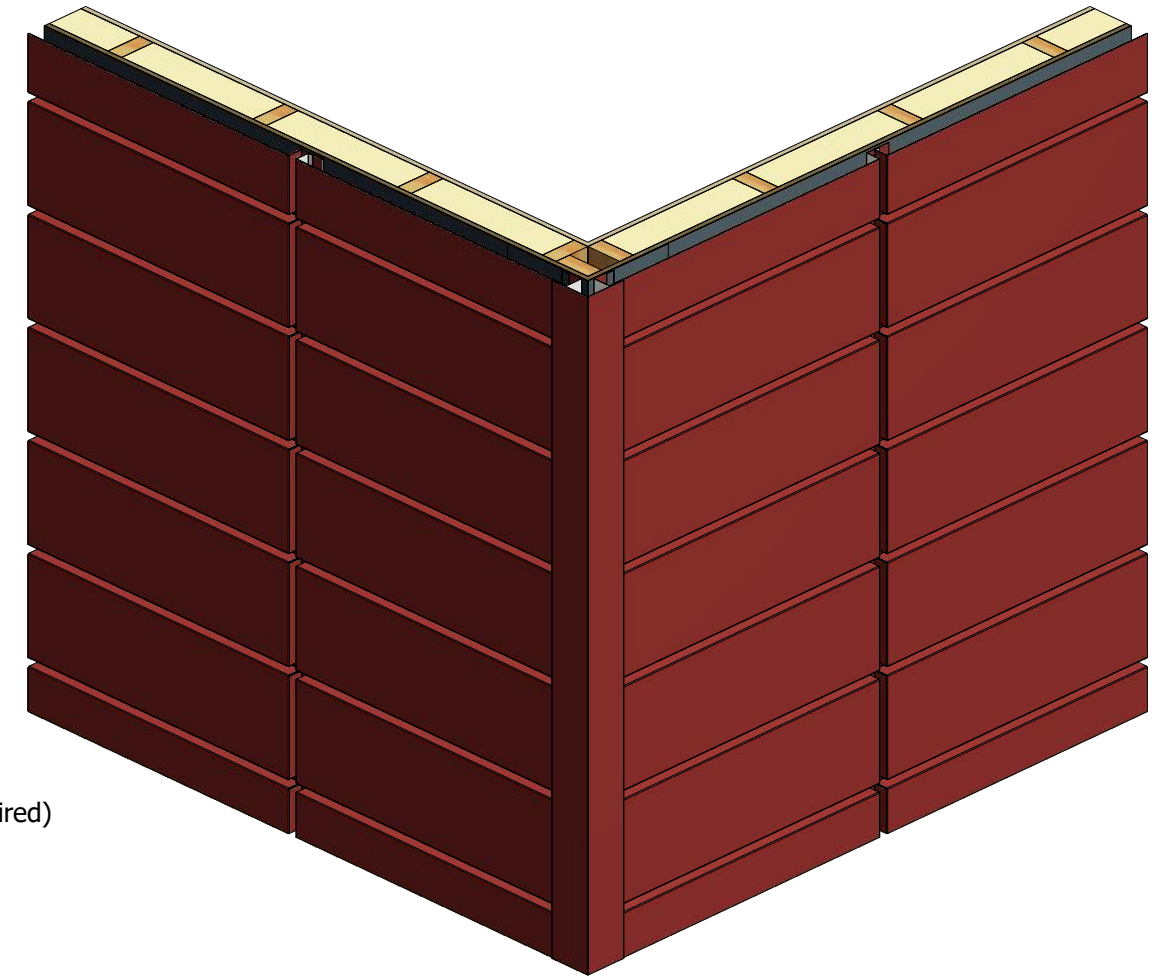
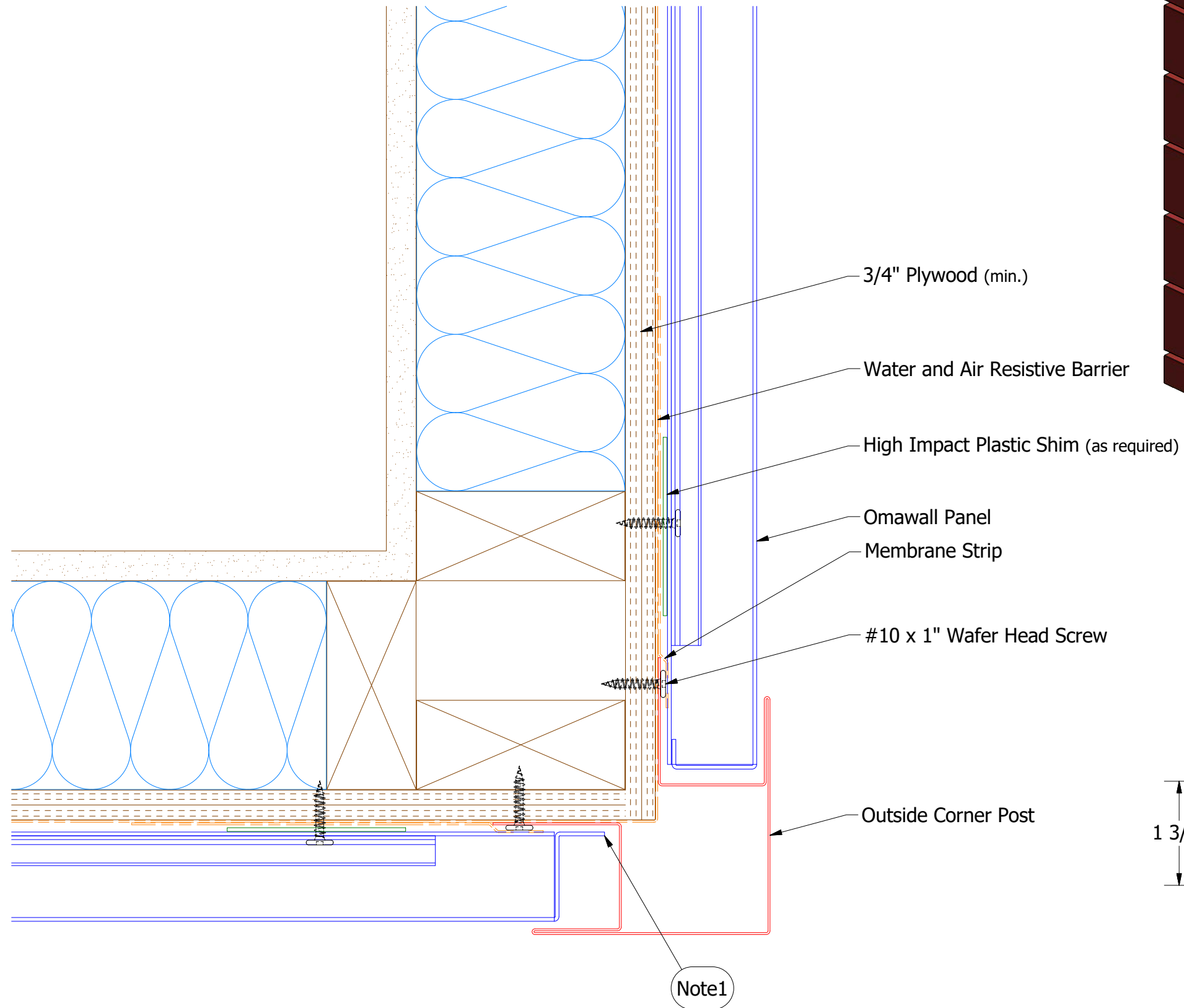
High Impact Plastic Shim (as required)

#10 x 1" Wafer Head Screw



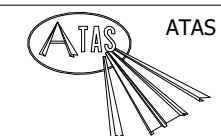
**Note:** \* denotes color side.

					Omawall Mitered Outside Corner Detail				
					DWG. NO.			DR JJP	DATE 9/22/2021
					MATERIAL			APP	DATE
REV. NO.	DATE	DESCRIPTION OF REVISION	BY	APP				SH. SIZE B	SCALE X:X



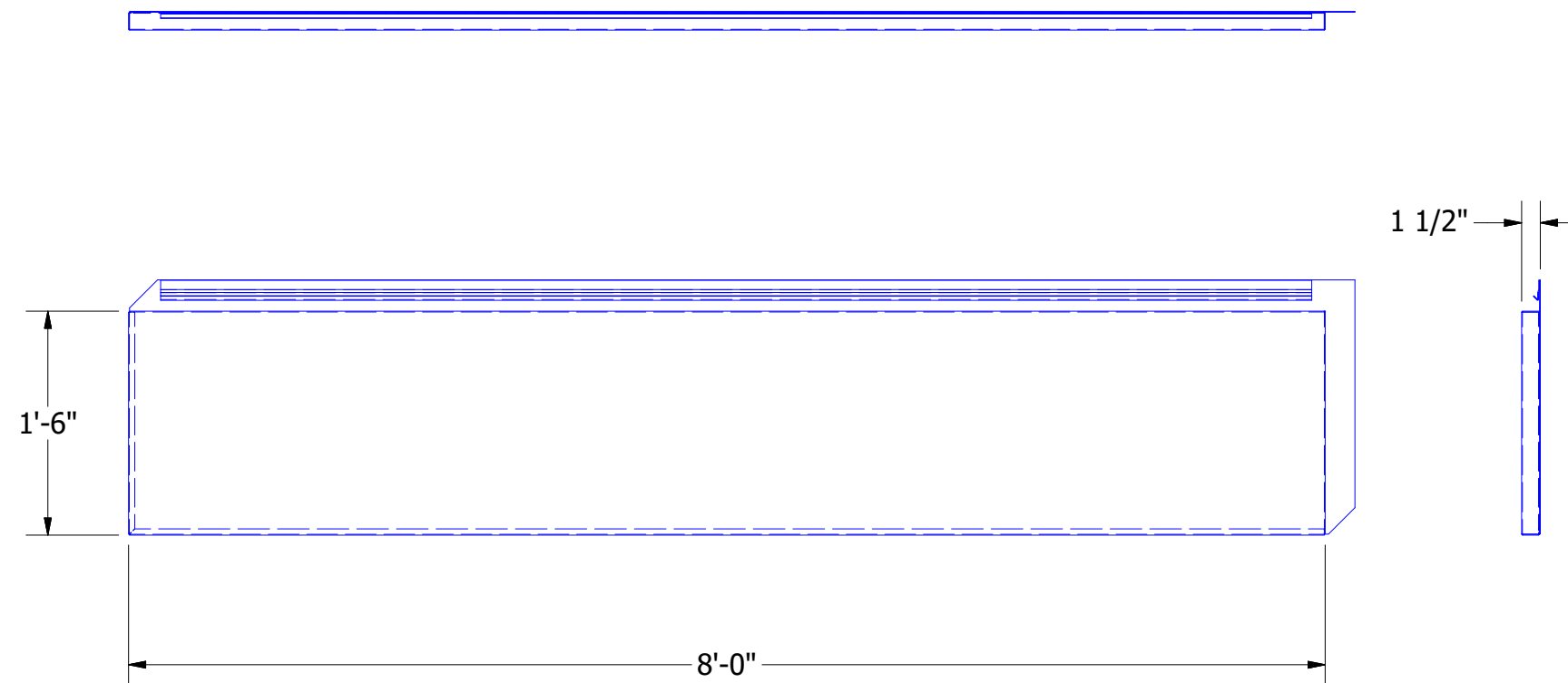
Outside Corner Post

Note: \* denotes color side.  
Note1: Cut Back Panel Edge.



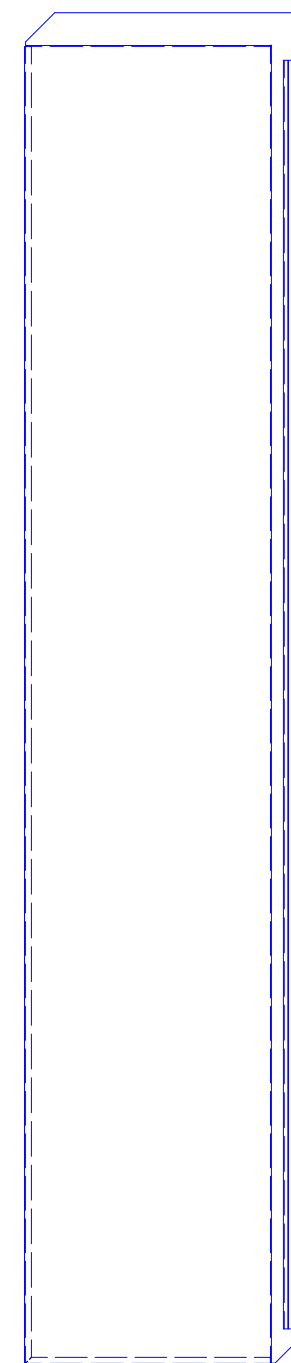
ATAS INTERNATIONAL, INC  
Allentown PA  
610-395-8445  
Mesa AZ  
480-558-7210

TITLE				Omawall Outside Corner Detail			
REV. NO.		DATE		DWG. NO.		DR	
						KRK	
						DATE	
						1/27/2021	
						APP	
						DATE	
						MATERIAL	
						SH. SIZE	
						B	
						SCALE	
						X:X	




## Omawall Horizontal Panel

(Standard Installation: Left to Right and Bottom to Top)

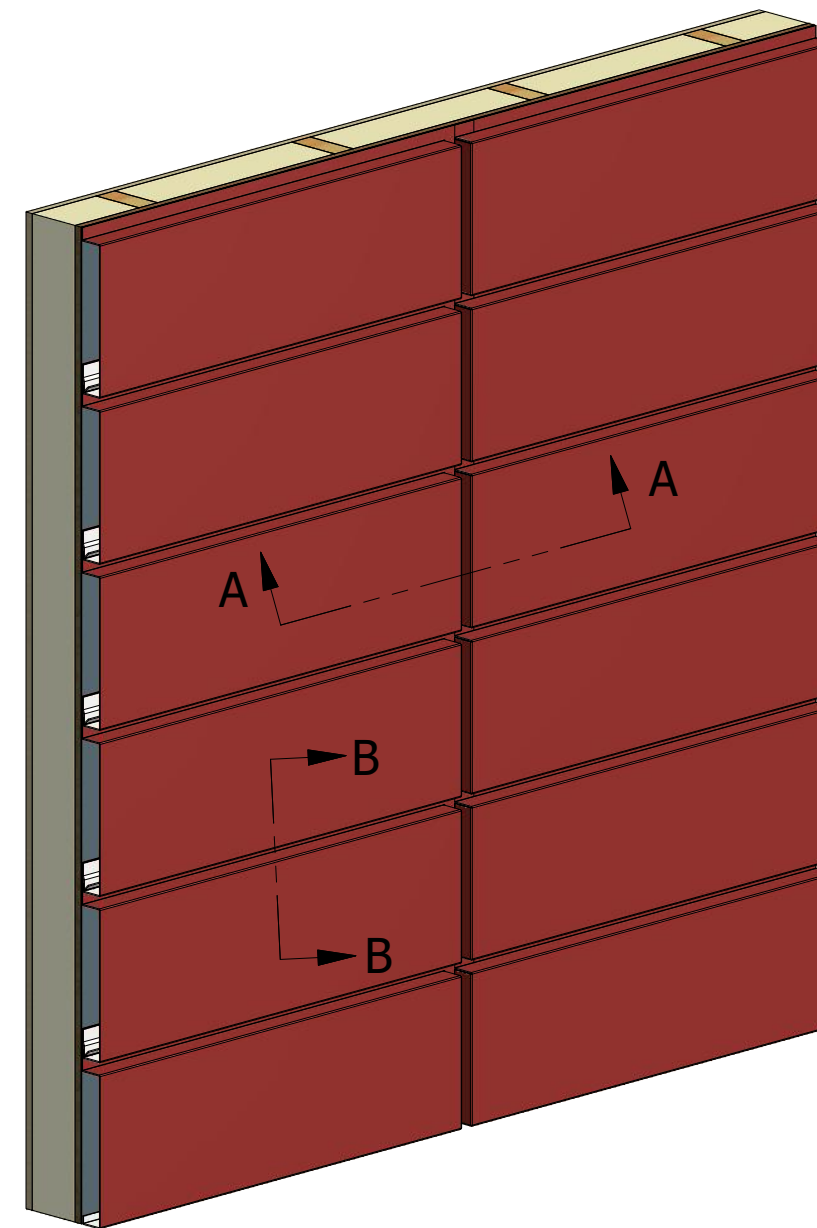
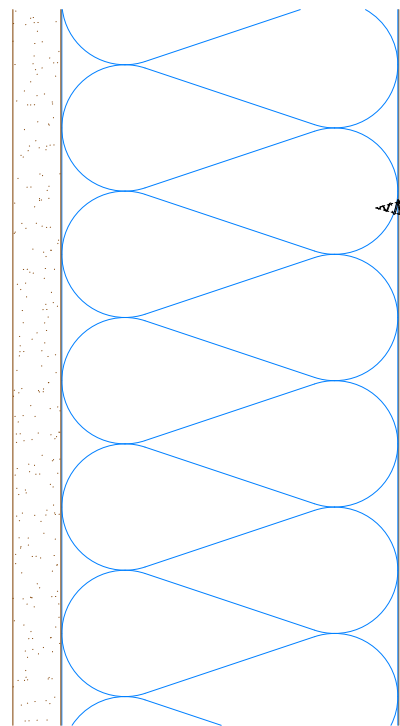


## Omawall Vertical Panel

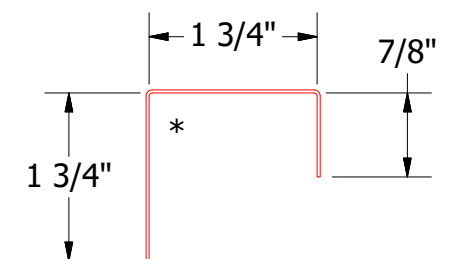
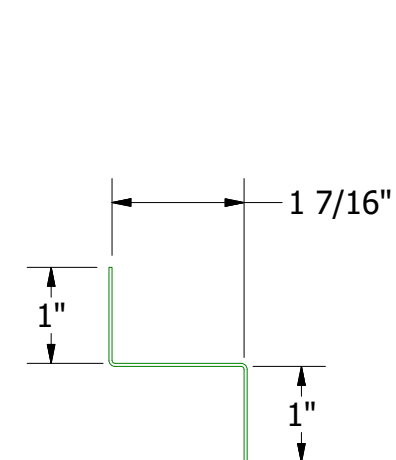
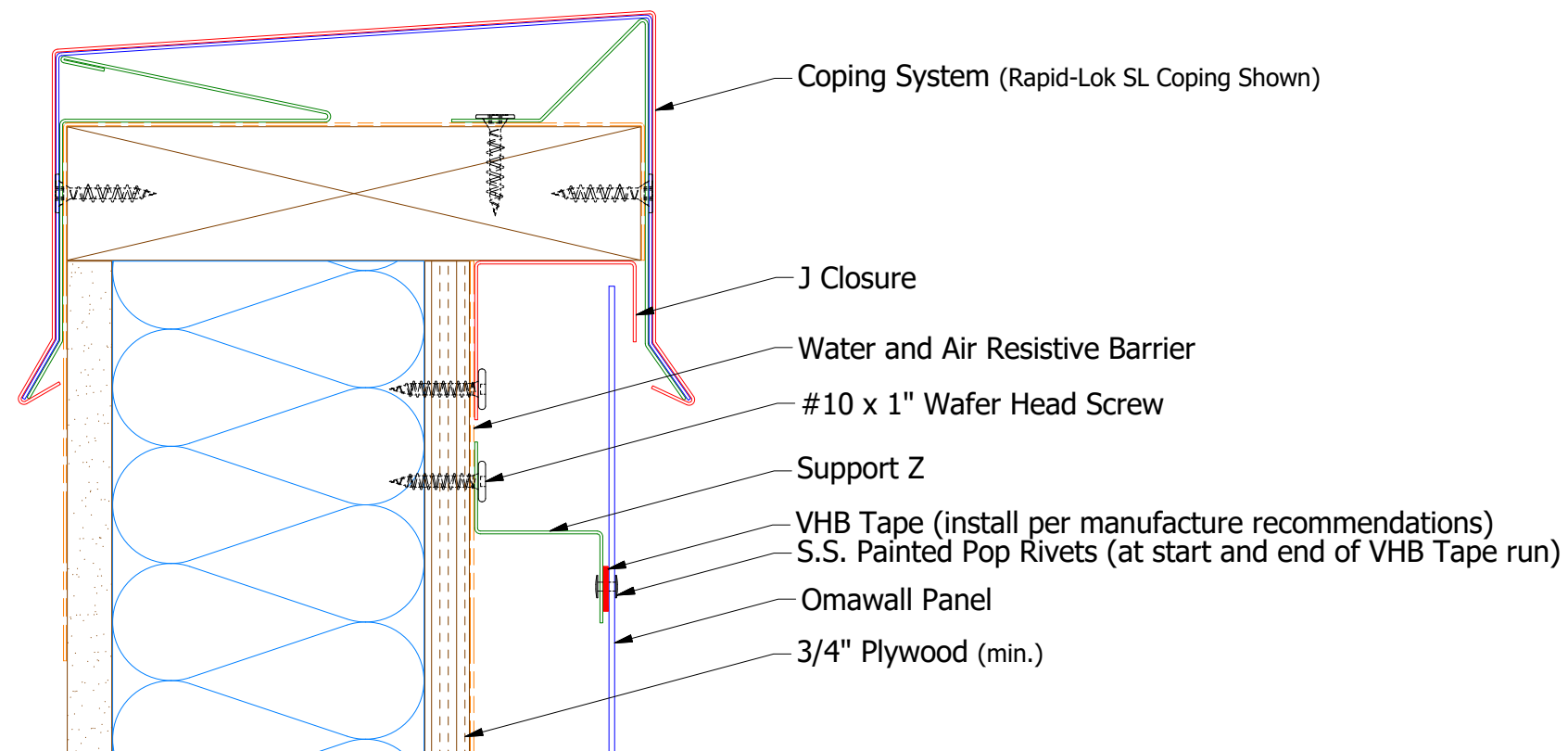
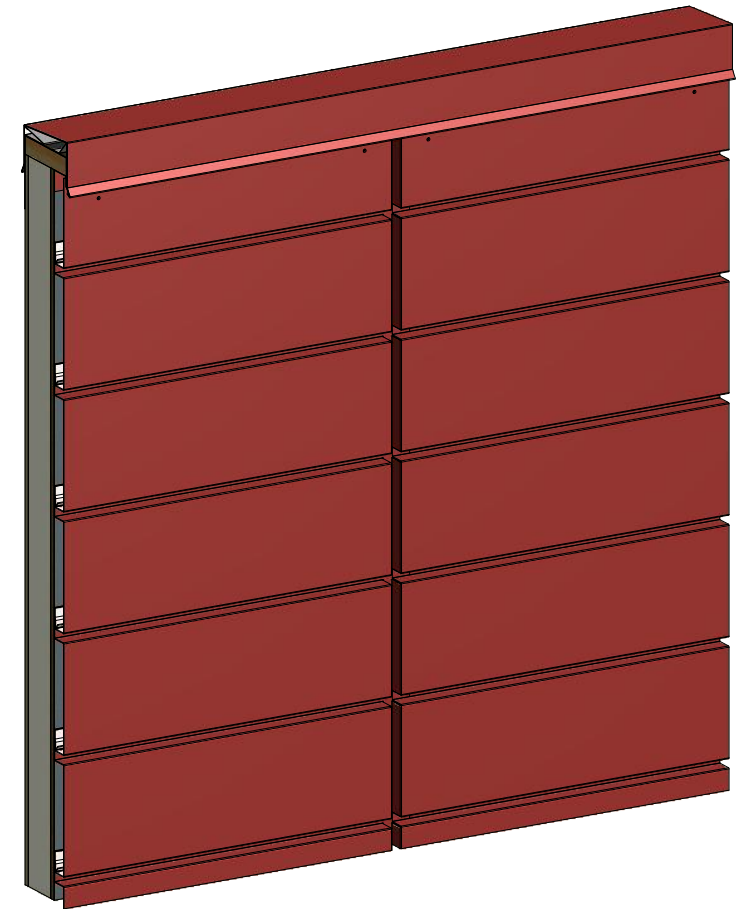
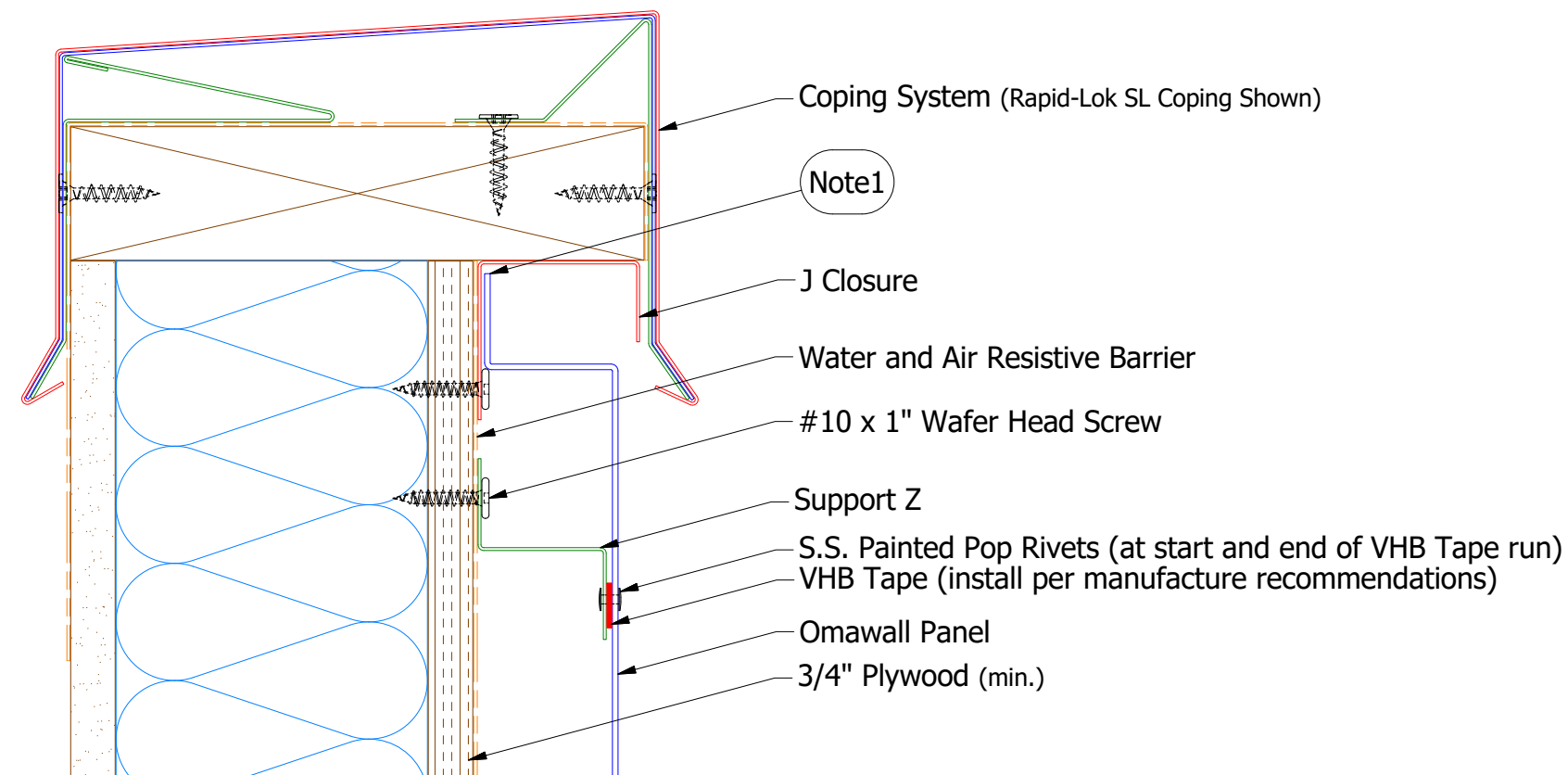
(Standard Installation: Left to Right and Bottom to Top)

					 <p>ATAS INTERNATIONAL, INC Allentown PA 610-395-8445 Mesa AZ 480-558-7210</p>	
					TITLE	
					Omawall Panel Detail	
					DWG. NO.	DR KRK DATE 2/22/2021
					MATERIAL	APP DATE
01	10/8/2021	Added Standard Installtion Direction	KRK		SH. SIZE B	SCALE X:X
REV. NO.	DATE	DESCRIPTION OF REVISION	BY	APP		





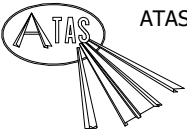
					TITLE					Omawall Panel Reveal Detail					
					DWG. NO.					DR		KRK	DATE		1/29/2021
										APP			DATE		
					MATERIAL					SH. SIZE		B	SCALE		X:X
REV. NO.	DATE	DESCRIPTION OF REVISION			BY	APP									

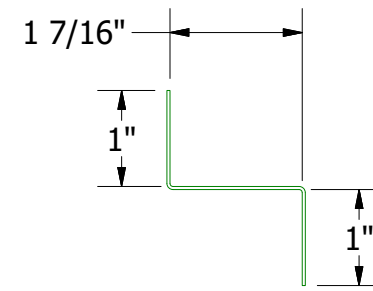
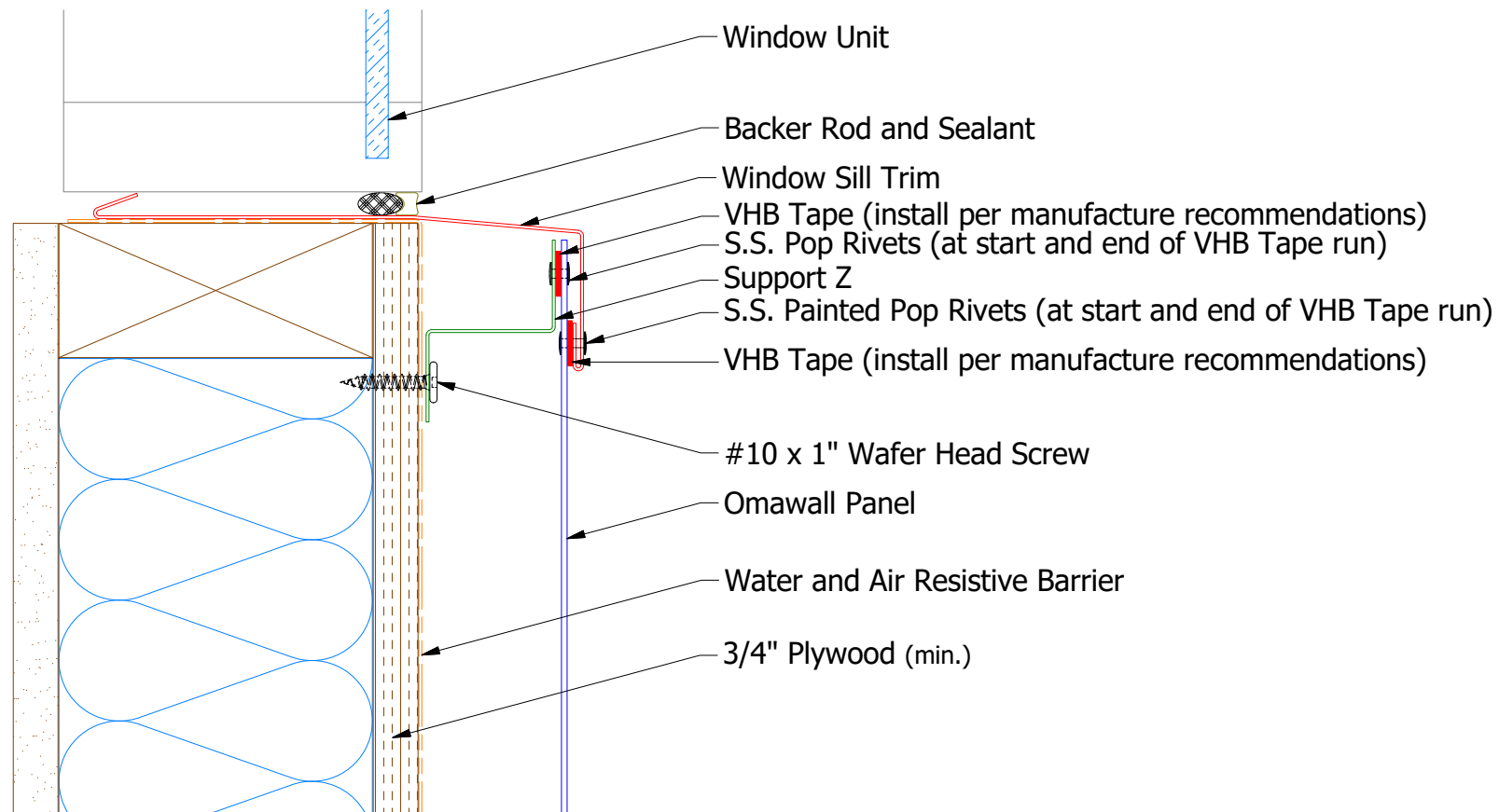
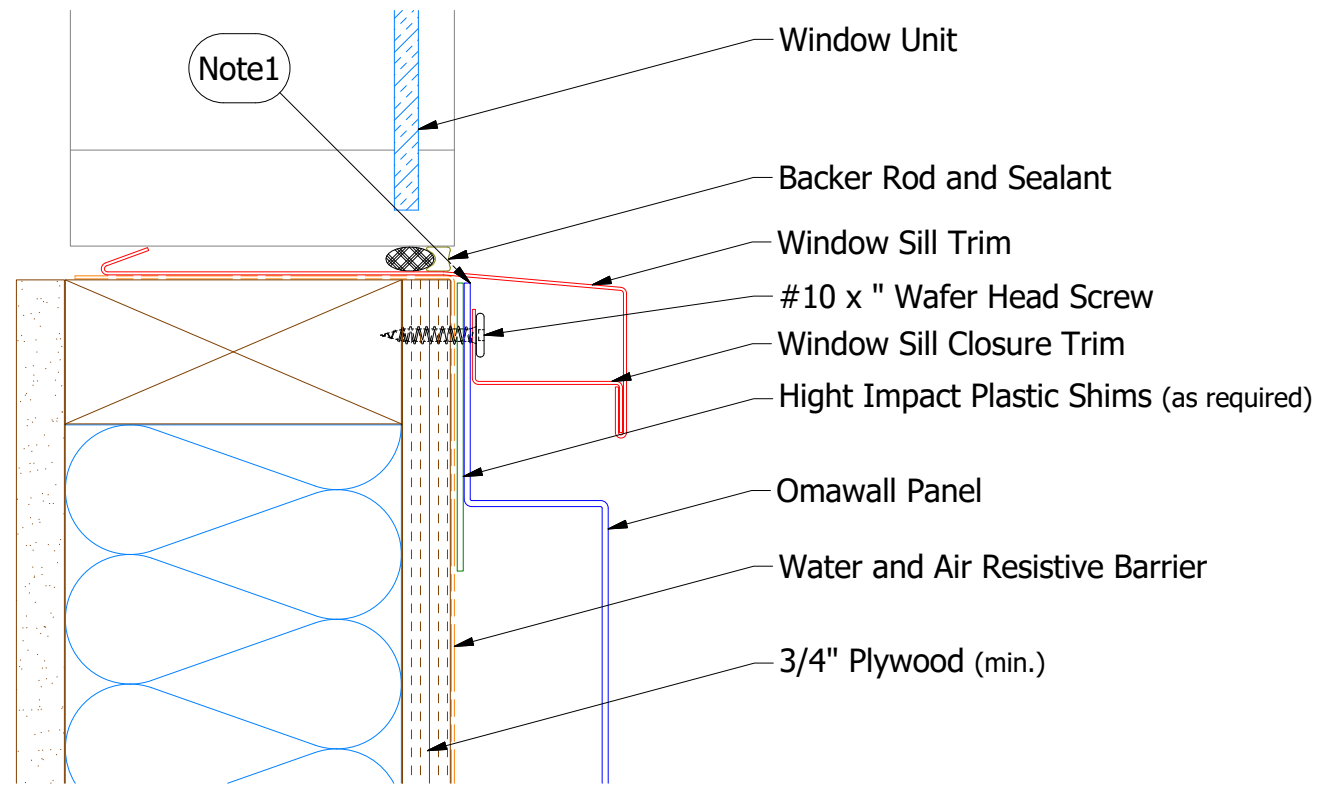


J Closure

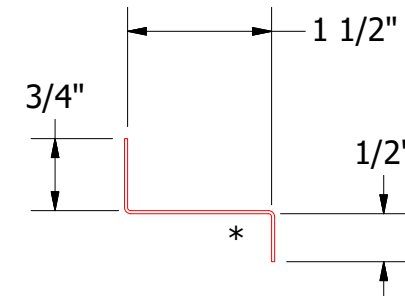
Support Z

Note: \* denotes color side.  
Note1: Cut Back Panel Edge.

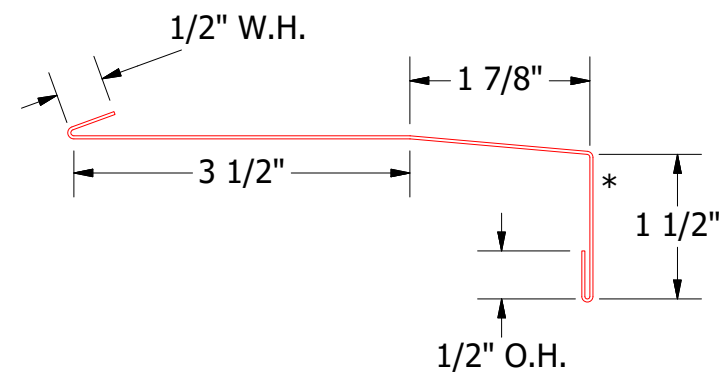
	ATAS INTERNATIONAL, INC	
	Allentown PA 610-395-8445 Mesa AZ 480-558-7210	
TITLE		Omawall Top of Wall Detail
DWG. NO.		DR KRK DATE 1/29/2021
MATERIAL		APP DATE
REV. NO.	DATE	DESCRIPTION OF REVISION
01	10/8/2021	Added VHB Tape
BY	KRK	APP
SH. SIZE	B	SCALE X:X



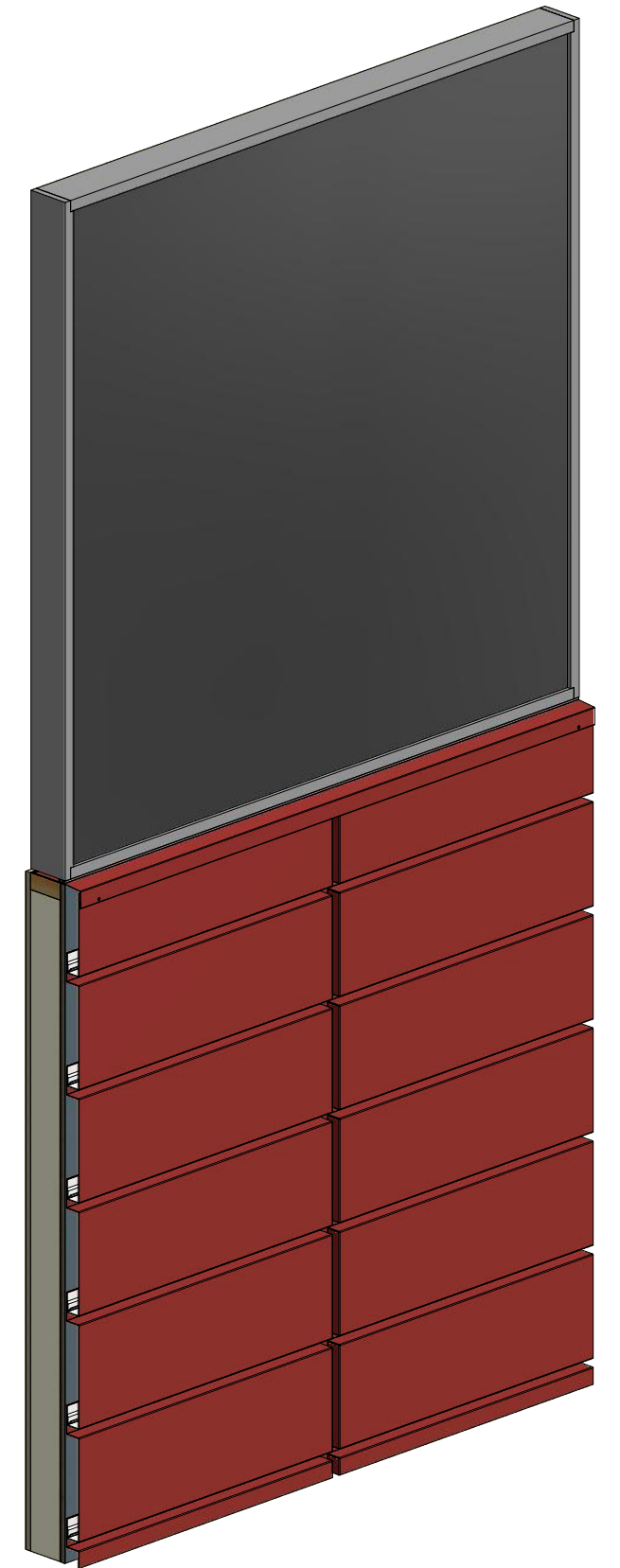
Support Z



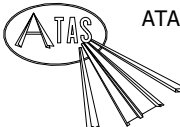
Window Sill Closure Trim



Window Sill Trim



Note: \* denotes color side.  
Note1: Cut Back Panel Edge.

				 <b>ATAS INTERNATIONAL, INC</b> Allentown PA 610-395-8445 Mesa AZ 480-558-7210	
				<b>Omawall Window Sill Detail</b>	
				DWG. NO.	DR KRK DATE 1/29/2021
				APP	DATE
				MATERIAL	SH. SIZE B SCALE X:X
REV. NO.	DATE	DESCRIPTION OF REVISION	BY	APP	
01	10/8/2021	Added VHB Tape	KRK		