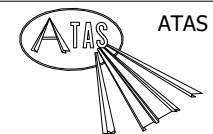


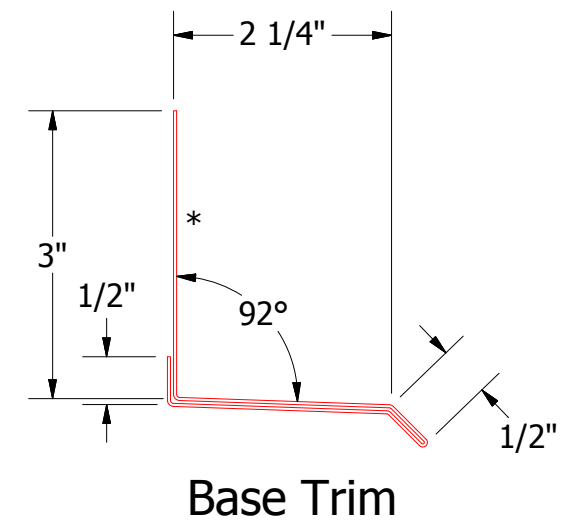
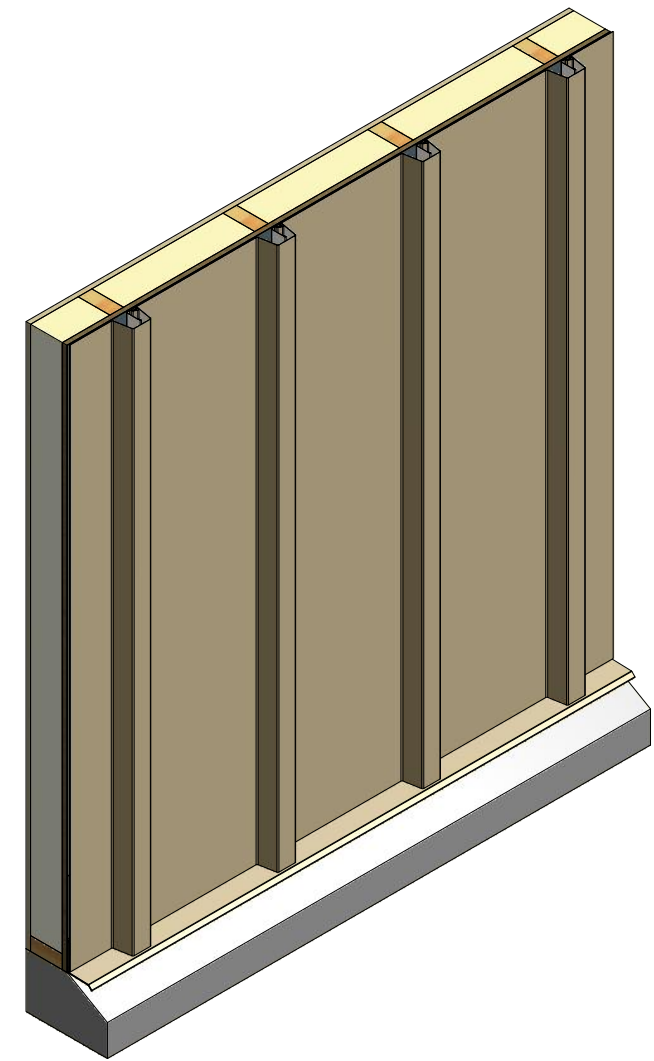
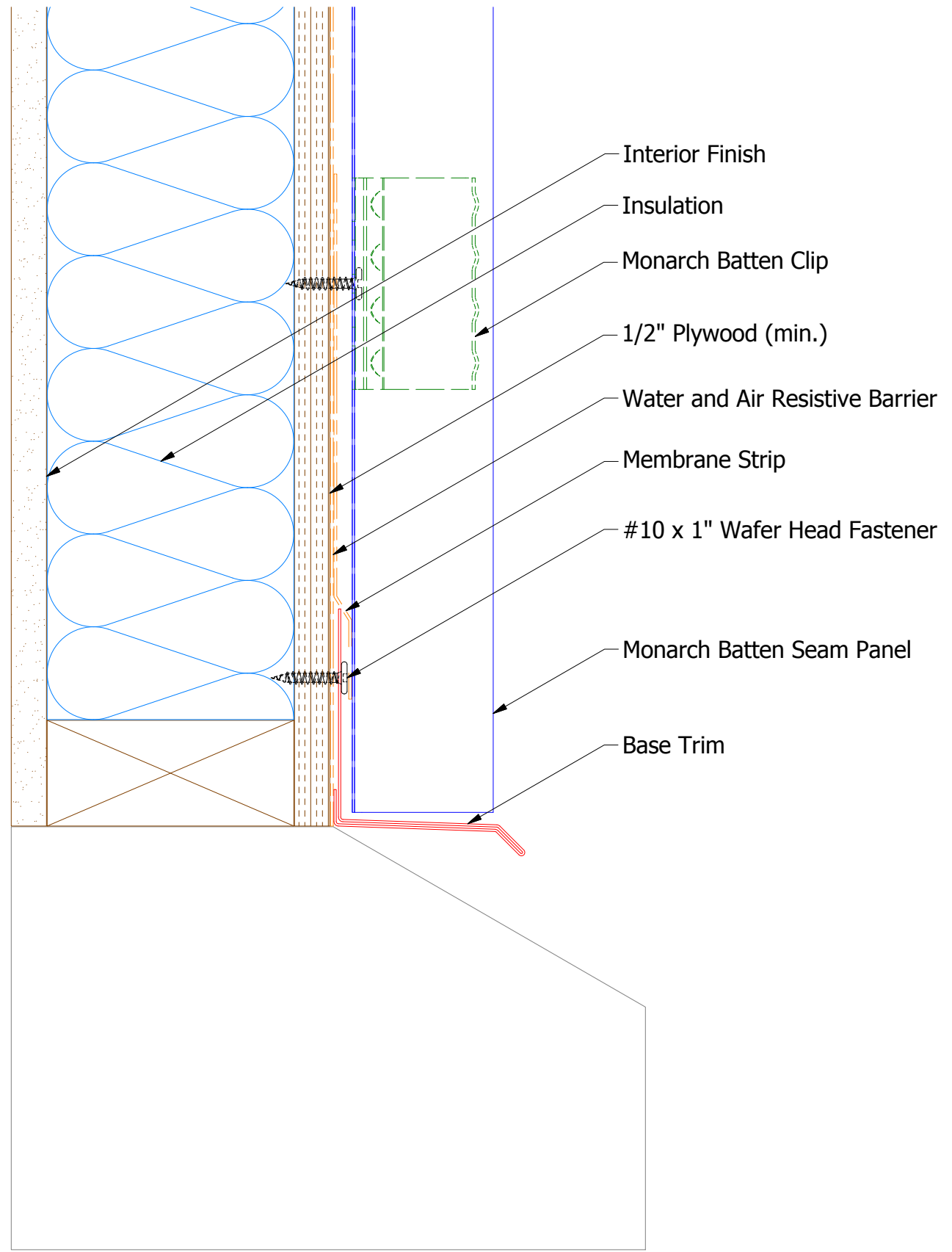
Note: * denotes color side.



ATAS INTERNATIONAL, INC
 Allentown PA
 610-395-8445
 Mesa AZ
 480-558-7210

TITLE
Monarch Batten Panel Profile Detail

| | | | | | | | |
|----------|------|-------------------------|----|-----|----------|-----|------------|
| REV. NO. | DATE | DESCRIPTION OF REVISION | BY | APP | DWG. NO. | DR | DATE |
| | | | | | | DMR | 12/29/2020 |
| | | | | | MATERIAL | APP | DATE |
| | | | | | SH. SIZE | B | SCALE |
| | | | | | | | X:X |



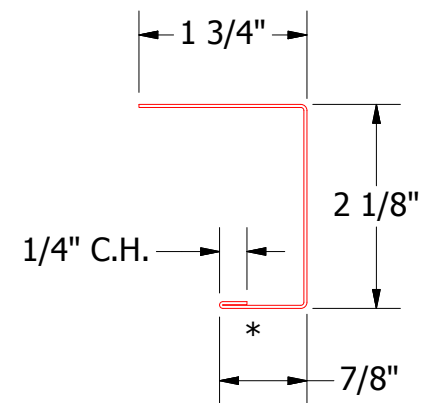
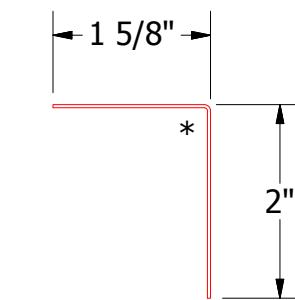
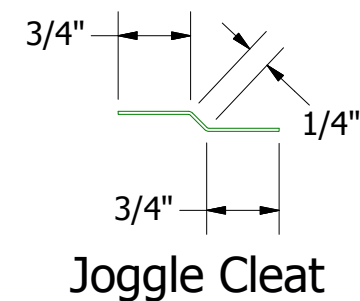
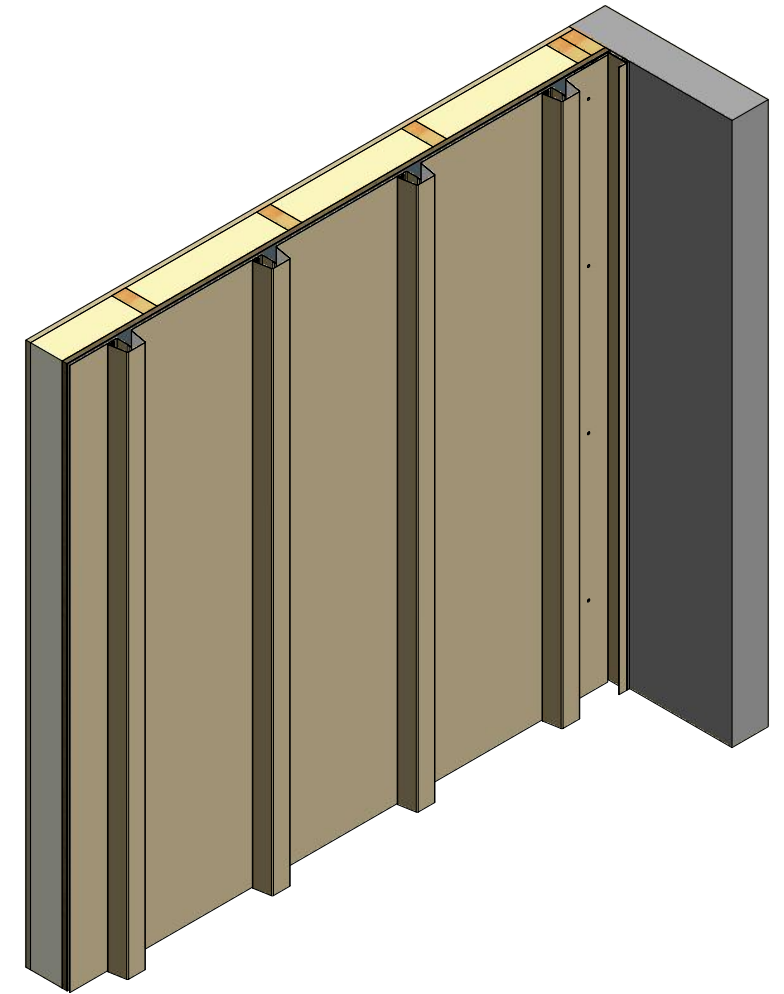
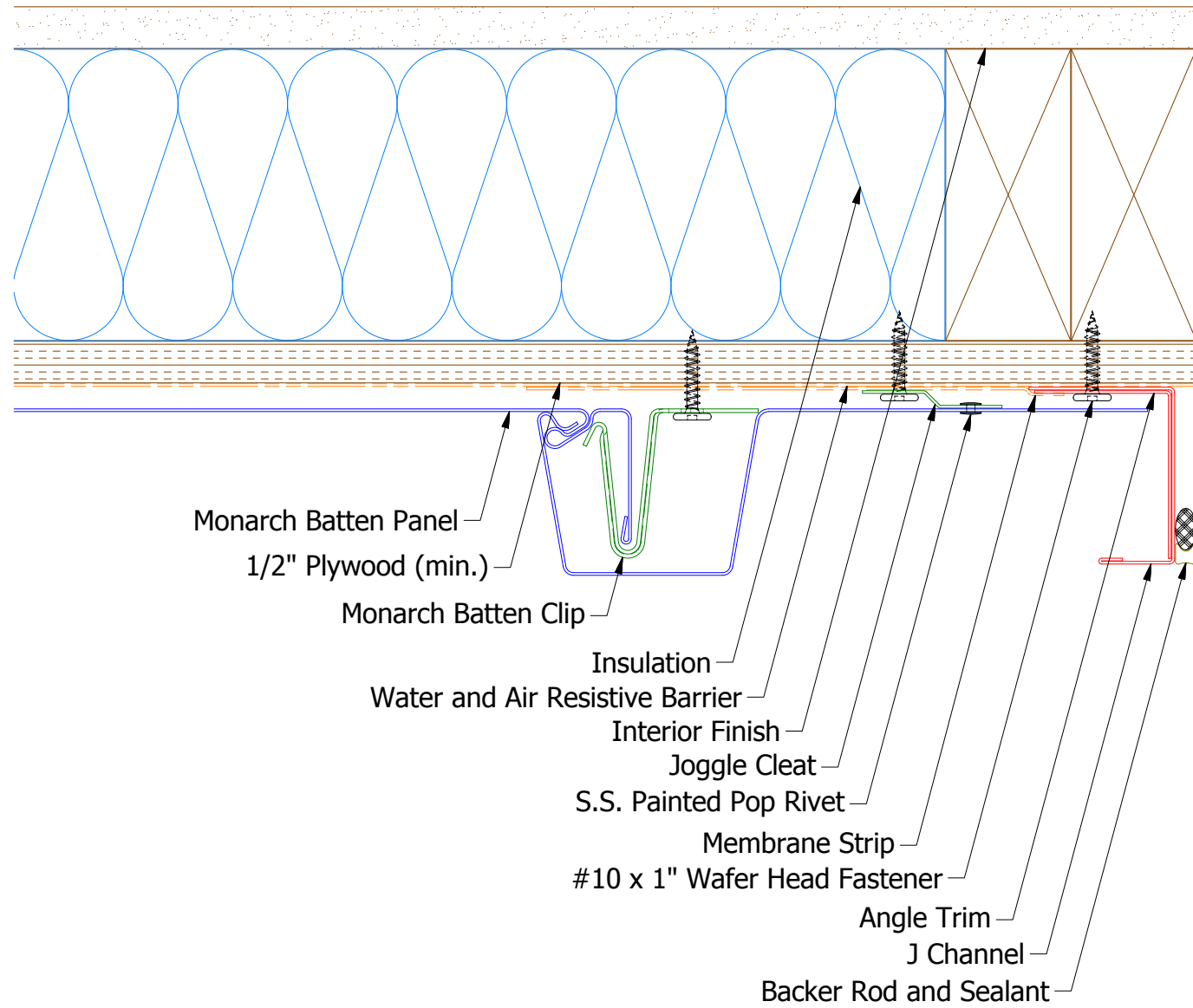
Base Trim

Note: * denotes color side.

ATAS ATAS INTERNATIONAL, INC
 Allentown PA
 610-395-8445
 Mesa AZ
 480-558-7210

TITLE **Monarch Batten Seam Base Detail**

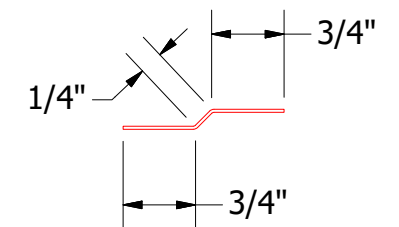
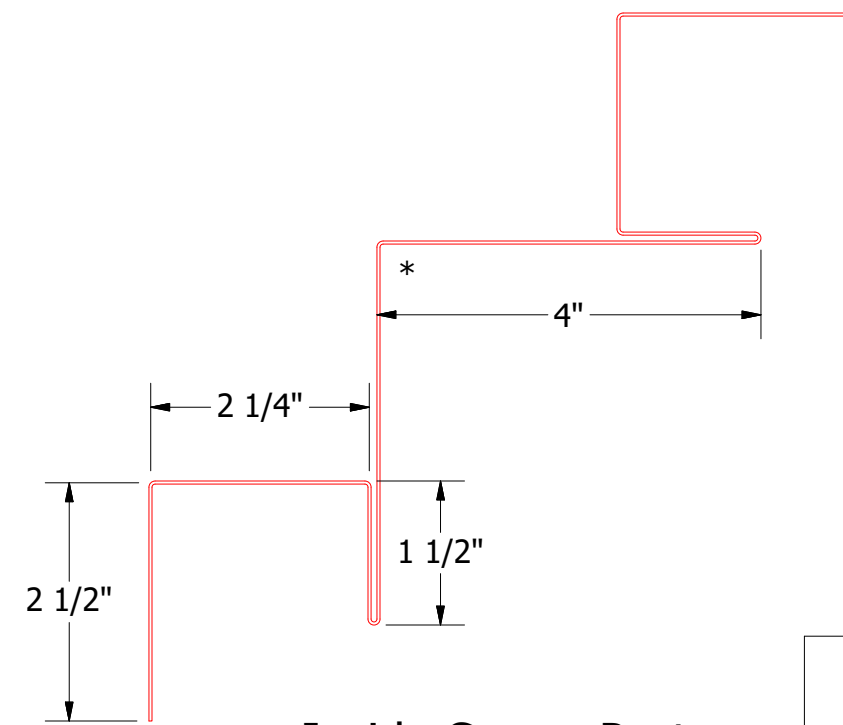
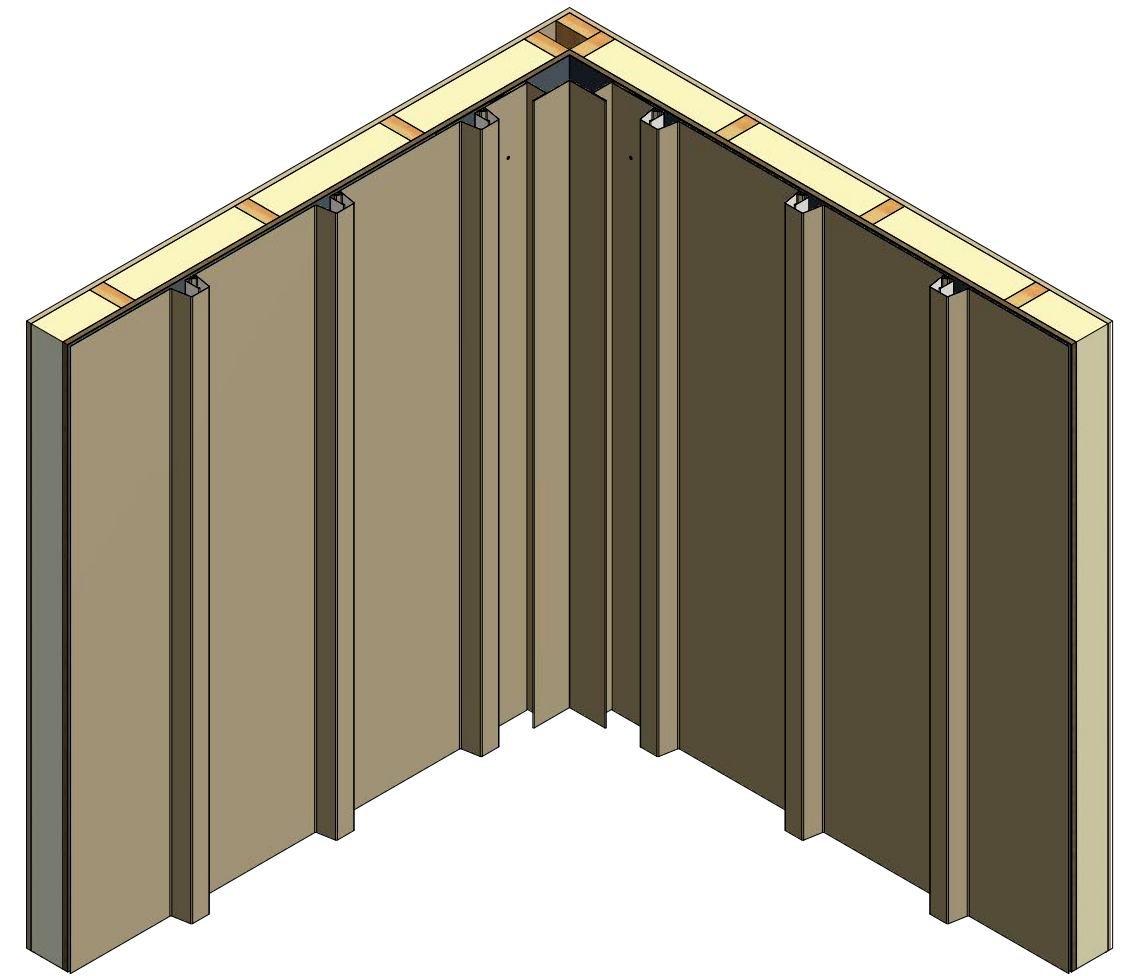
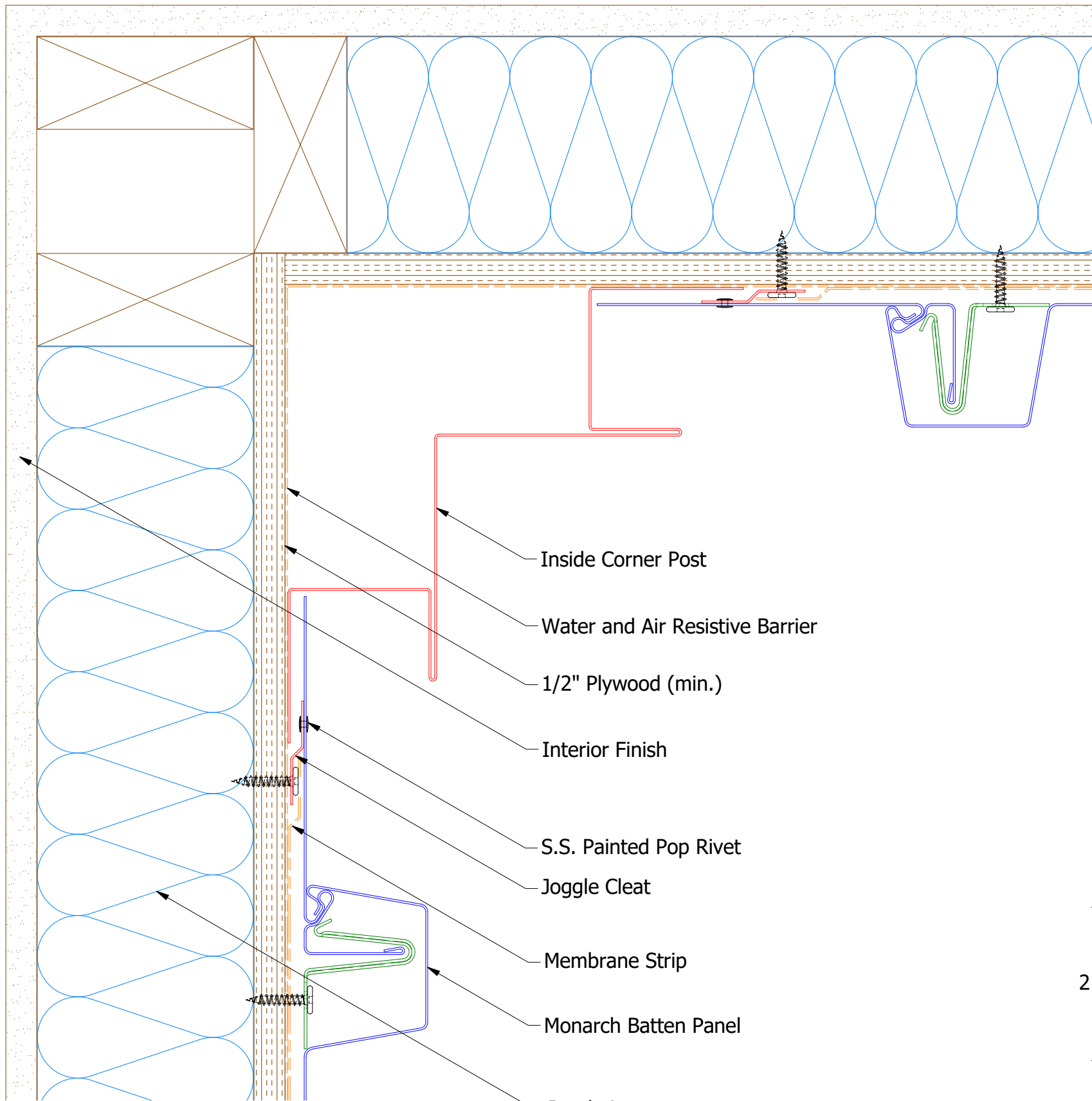
| | | | | | | | |
|----------|------|-------------------------|----|-----|----------|-----|-----------|
| REV. NO. | DATE | DESCRIPTION OF REVISION | BY | APP | DWG. NO. | DR | DATE |
| | | | | | | DMR | 6/24/2019 |
| | | | | | MATERIAL | APP | DATE |
| | | | | | SH. SIZE | B | SCALE X:X |



Note: * denotes color side.

| REV. NO. | DATE | DESCRIPTION OF REVISION | BY | APP |
|----------|------|-------------------------|----|-----|
| | | | | |
| | | | | |
| | | | | |

| | | | |
|--|-----|---|----------|
| | | ATAS INTERNATIONAL, INC Allentown PA 610-395-8445 Mesa AZ 480-558-7210 | |
| TITLE Monarch Batten Endwall Detail | | | |
| DWG. NO. | DR | DATE | 7/1/2019 |
| MATERIAL | APP | DMR | DATE |
| SH. SIZE | B | SCALE | X:X |



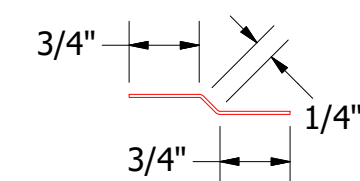
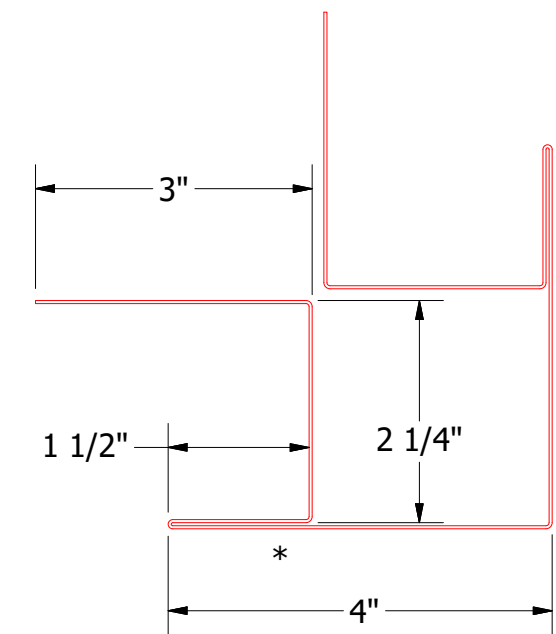
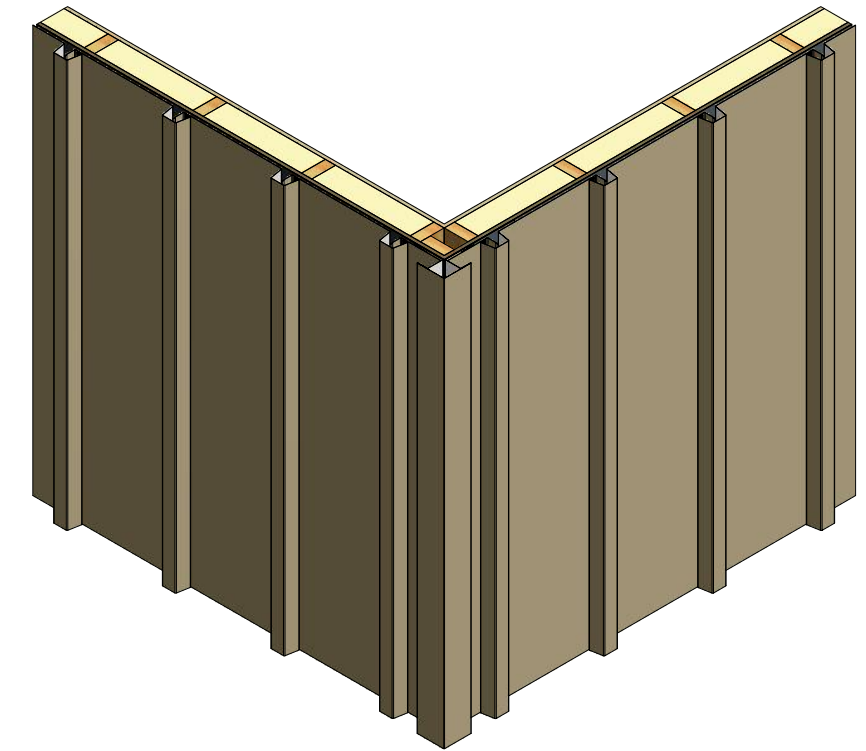
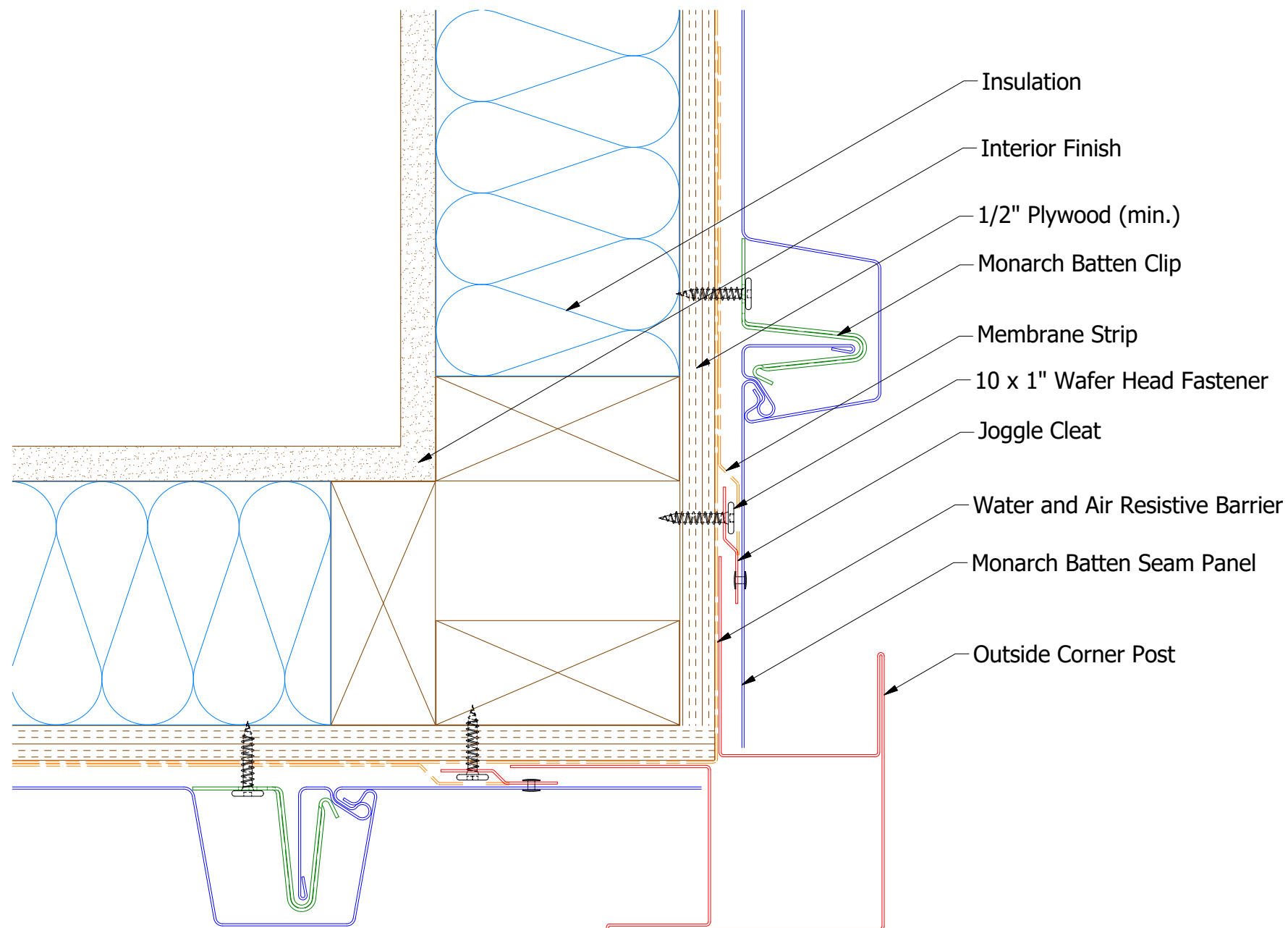
Joggle Cleat

Inside Corner Post

Note: * denotes color side.


| | | | |
|----------|----------|---|-----------|
| | | ATAS INTERNATIONAL, INC Allentown PA 610-395-8445 Mesa AZ 480-558-7210 | |
| | | TITLE Monarch Batten Inside Corner Detail | |
| DWG. NO. | DR | DATE | |
| | DMR | 6/28/2019 | |
| MATERIAL | APP | DATE | |
| | SH. SIZE | B | SCALE X:X |

| REV. NO. | DATE | DESCRIPTION OF REVISION | BY | APP |
|----------|------|-------------------------|----|-----|
| | | | | |



Joggle Cleat

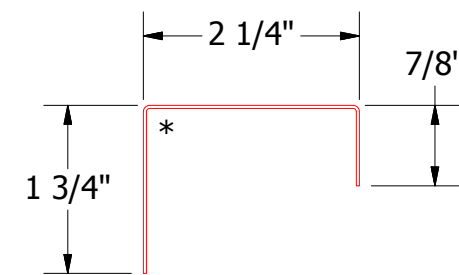
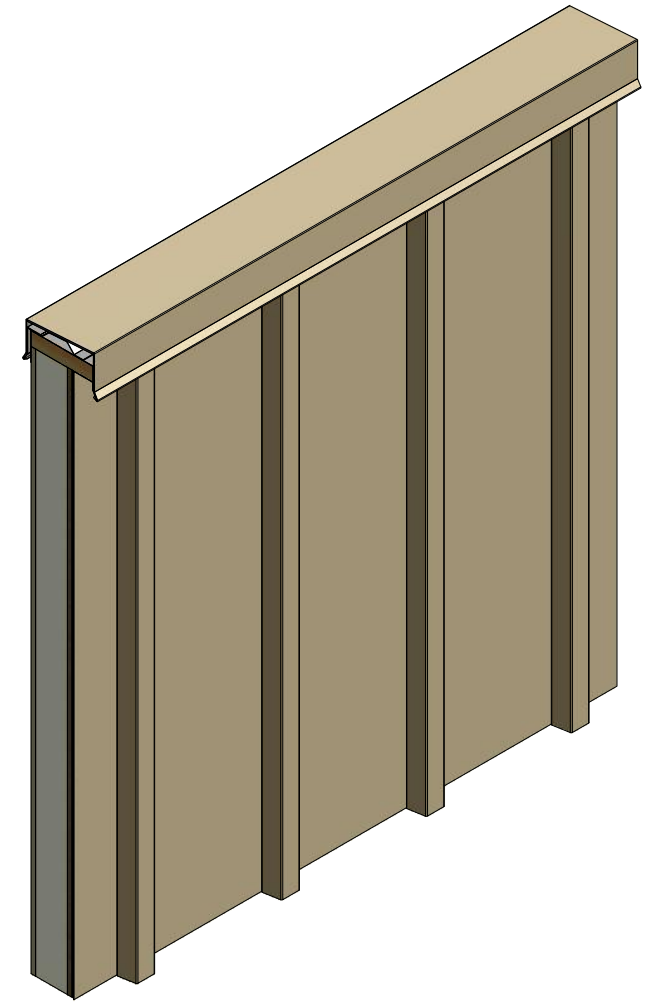
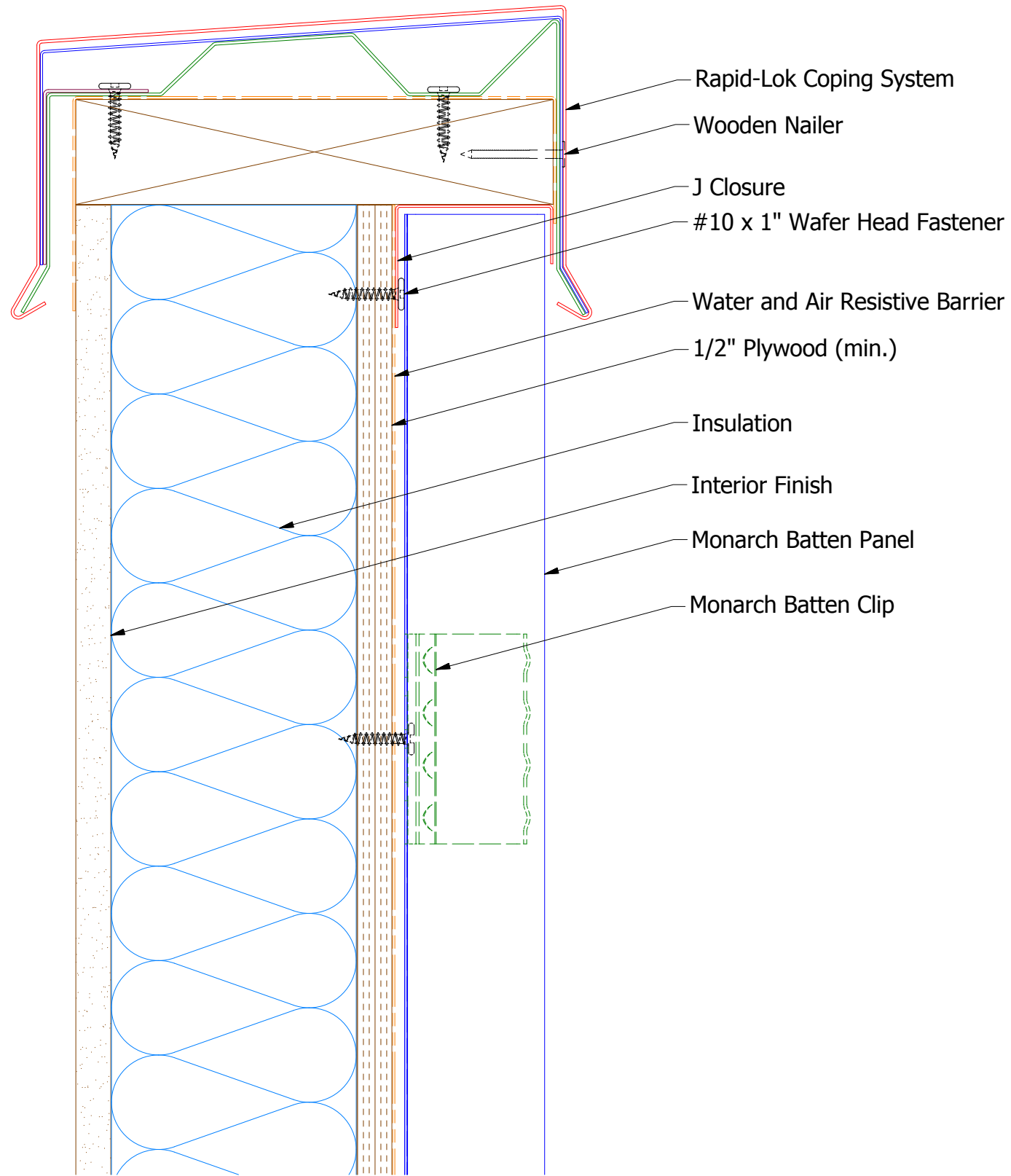
Outside Corner Post


ATAS INTERNATIONAL, INC
 Allentown PA
 610-395-8445
 Mesa AZ
 480-558-7210

Monarch Batten Outside Corner Detail

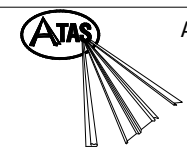
| | | | | | | | |
|----------|------|-------------------------|----|-----|----------|----------|-------------|
| REV. NO. | DATE | DESCRIPTION OF REVISION | BY | APP | DWG. NO. | DR | DATE |
| | | | | | | AJZ | 6/24/2019 |
| | | | | | MATERIAL | APP | DATE |
| | | | | | | SH. SIZE | B SCALE X:X |

Note: * denotes color side.



J Closure

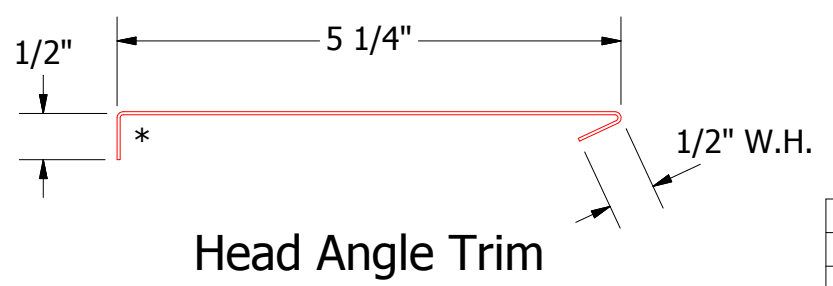
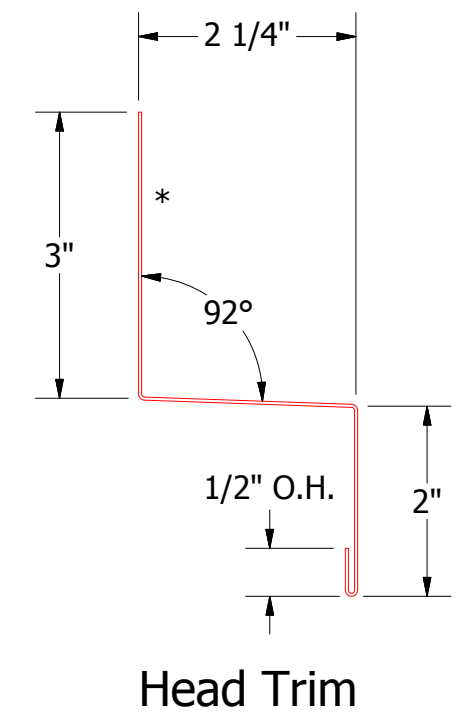
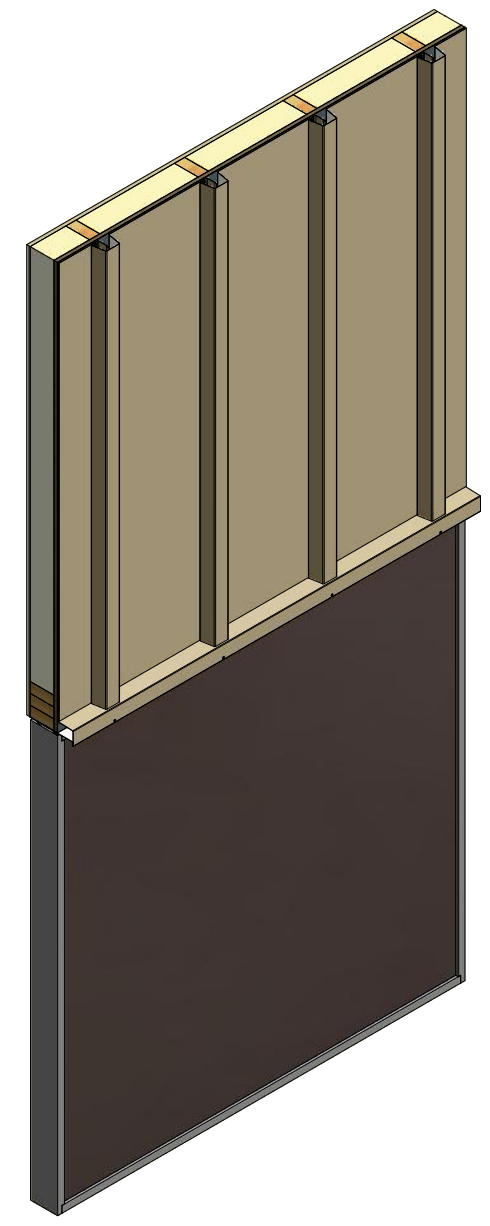
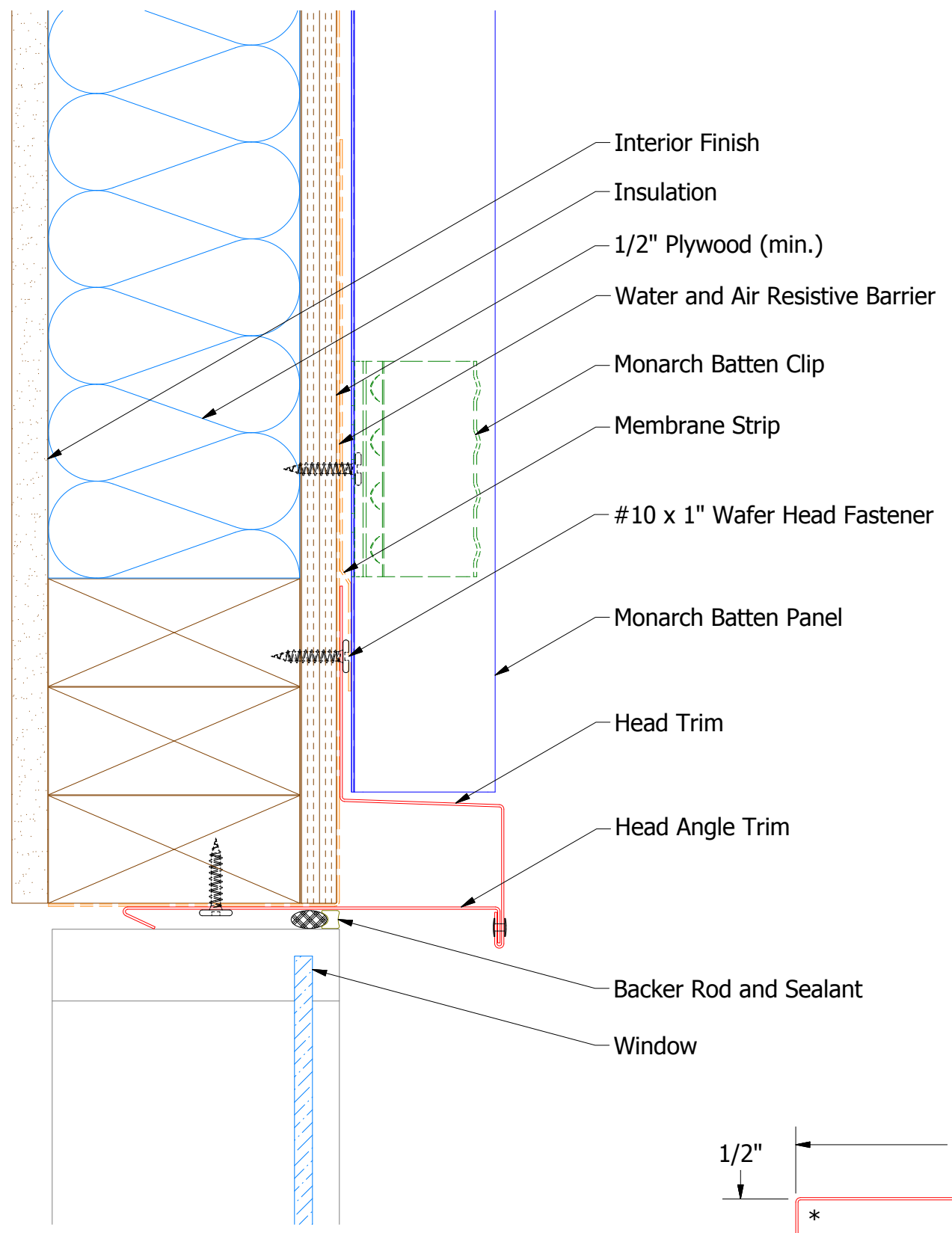
Note: * denotes color side.



ATAS INTERNATIONAL, INC
 Allentown PA
 610-395-8445
 Mesa AZ
 480-558-7210

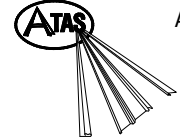
TITLE Monarch Batten Top of Wall Detail

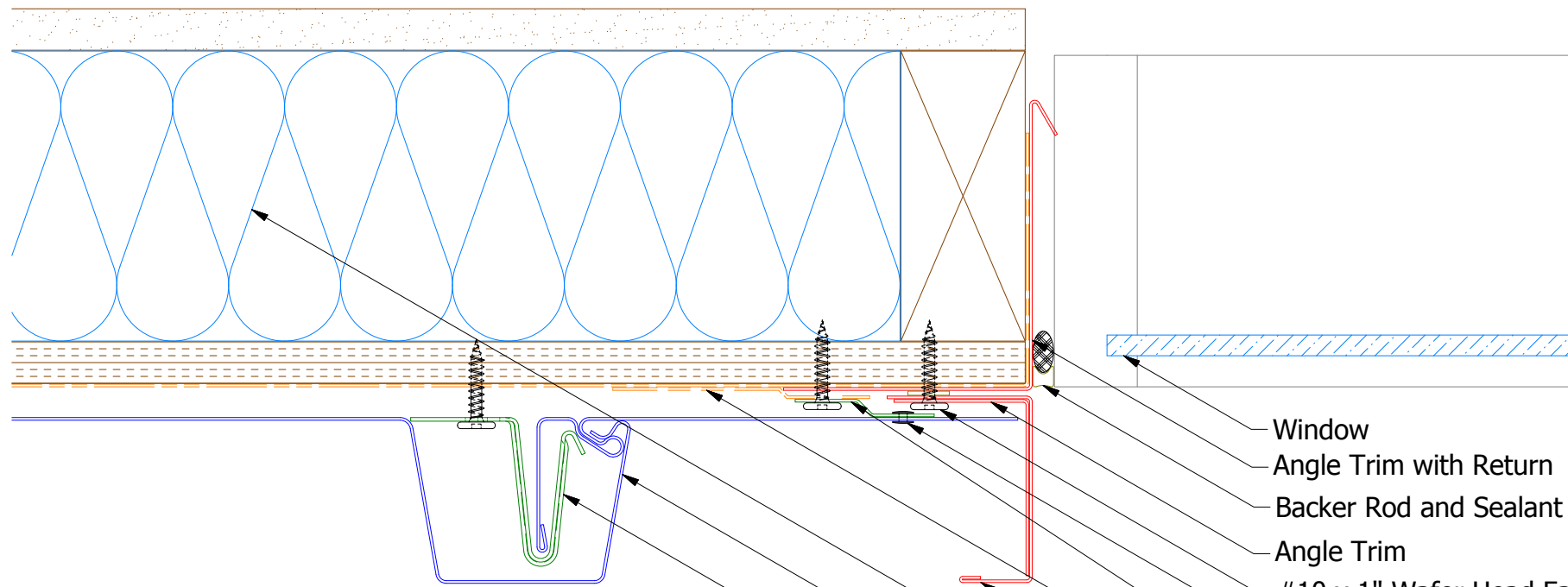
| | | | | | | | | | |
|----------|------|-------------------------|----|-----|----------|----------|-----|-------|----------|
| REV. NO. | DATE | DESCRIPTION OF REVISION | BY | APP | DWG. NO. | DR | DMR | DATE | 7/1/2019 |
| | | | | | | APP | | DATE | |
| | | | | | MATERIAL | SH. SIZE | B | SCALE | X:X |



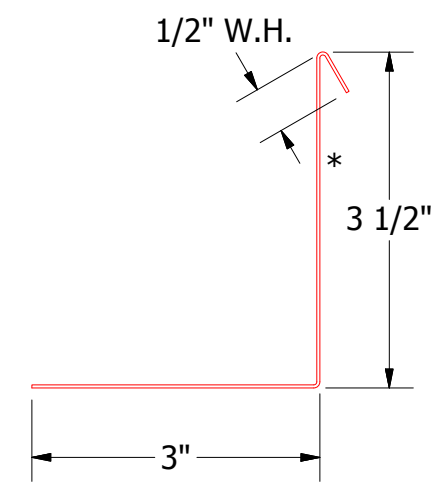
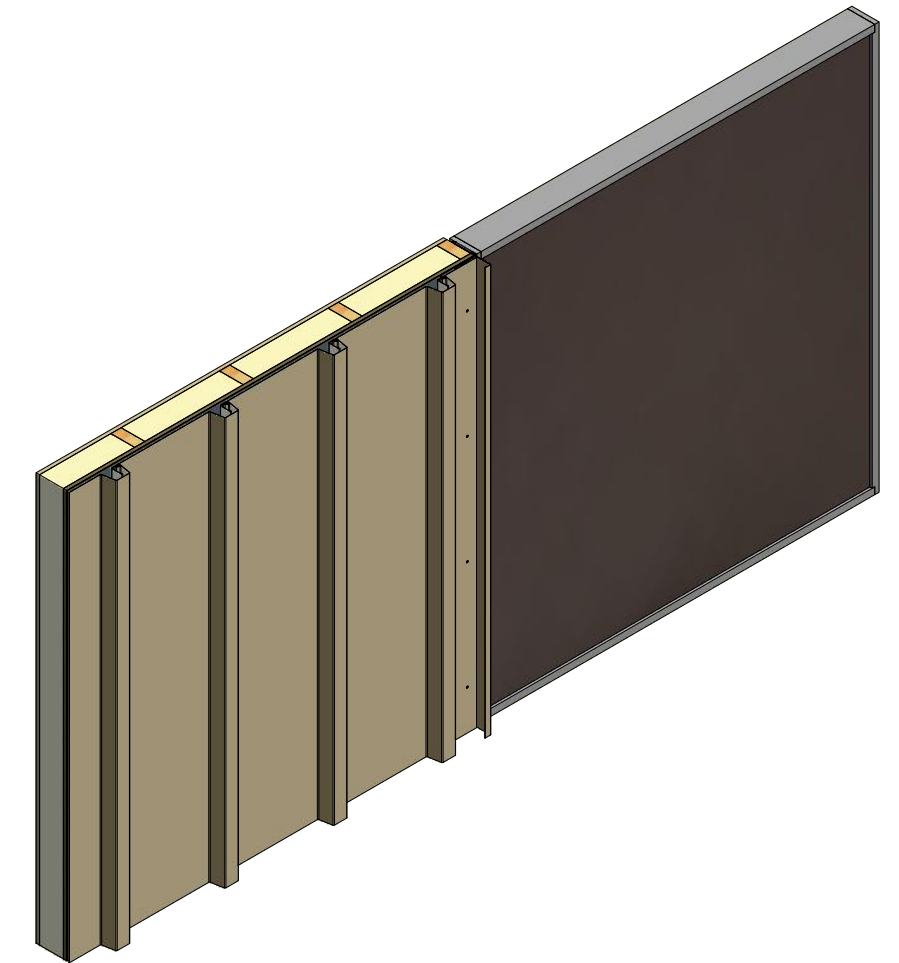
Note: * denotes color side.

| REV. NO. | DATE | DESCRIPTION OF REVISION | BY | APP |
|----------|------|-------------------------|----|-----|
| | | | | |

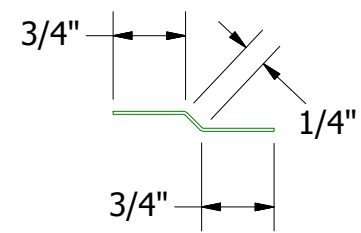
| | | | |
|---|--|---|-------------------|
|  | | ATAS INTERNATIONAL, INC Allentown PA 610-395-8445 Mesa AZ 480-558-7210 | |
| TITLE Monarch Batten Head Detail | | | |
| DWG. NO. | | DR DMR | DATE 6/28/2019 |
| MATERIAL | | APP | DATE |
| SH. SIZE B | | SCALE X:X | |



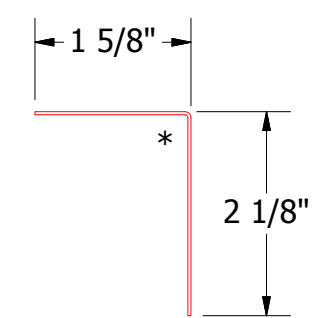
- Window
- Angle Trim with Return
- Backer Rod and Sealant
- Angle Trim
- #10 x 1" Wafer Head Fastener
- S.S. Painted Pop Rivet
- Joggle Cleat
- Membrane Strip
- J Channel
- Insulation
- Monarch Batten Panel
- Monarch Batten Clip



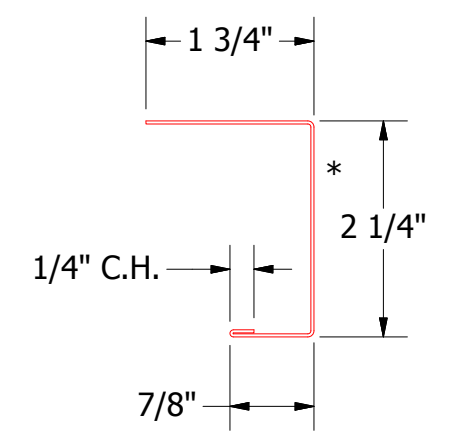
Angle Trim with Return



Joggle Cleat



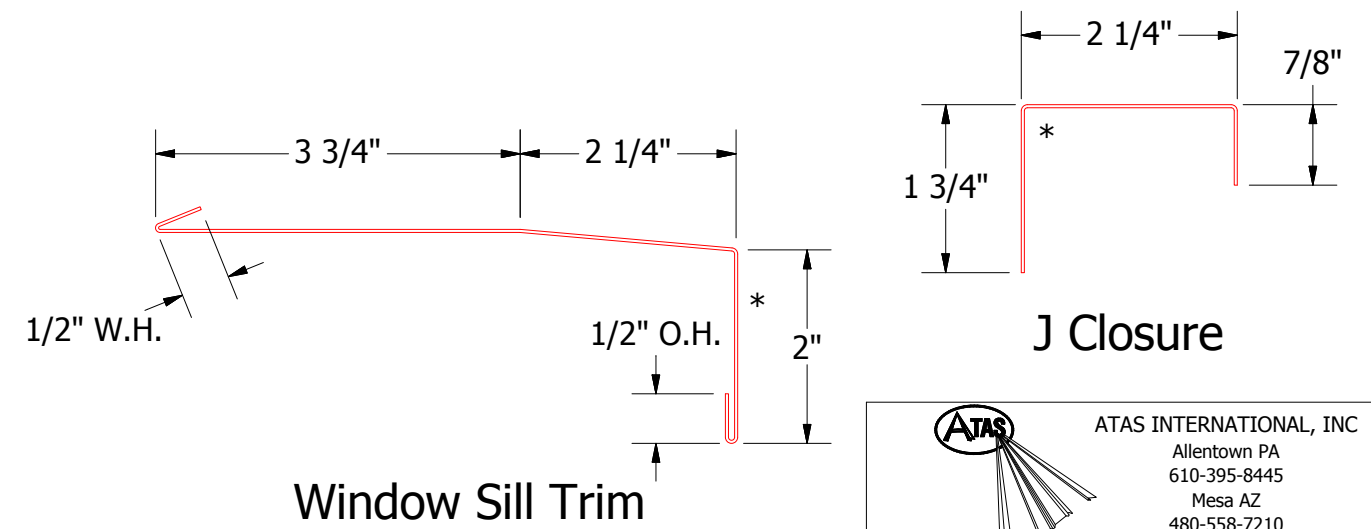
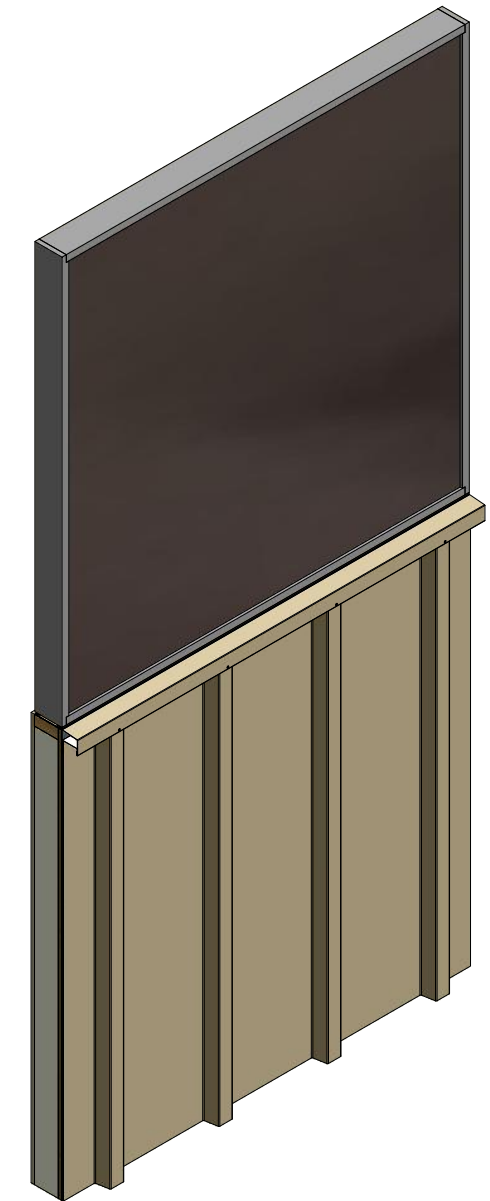
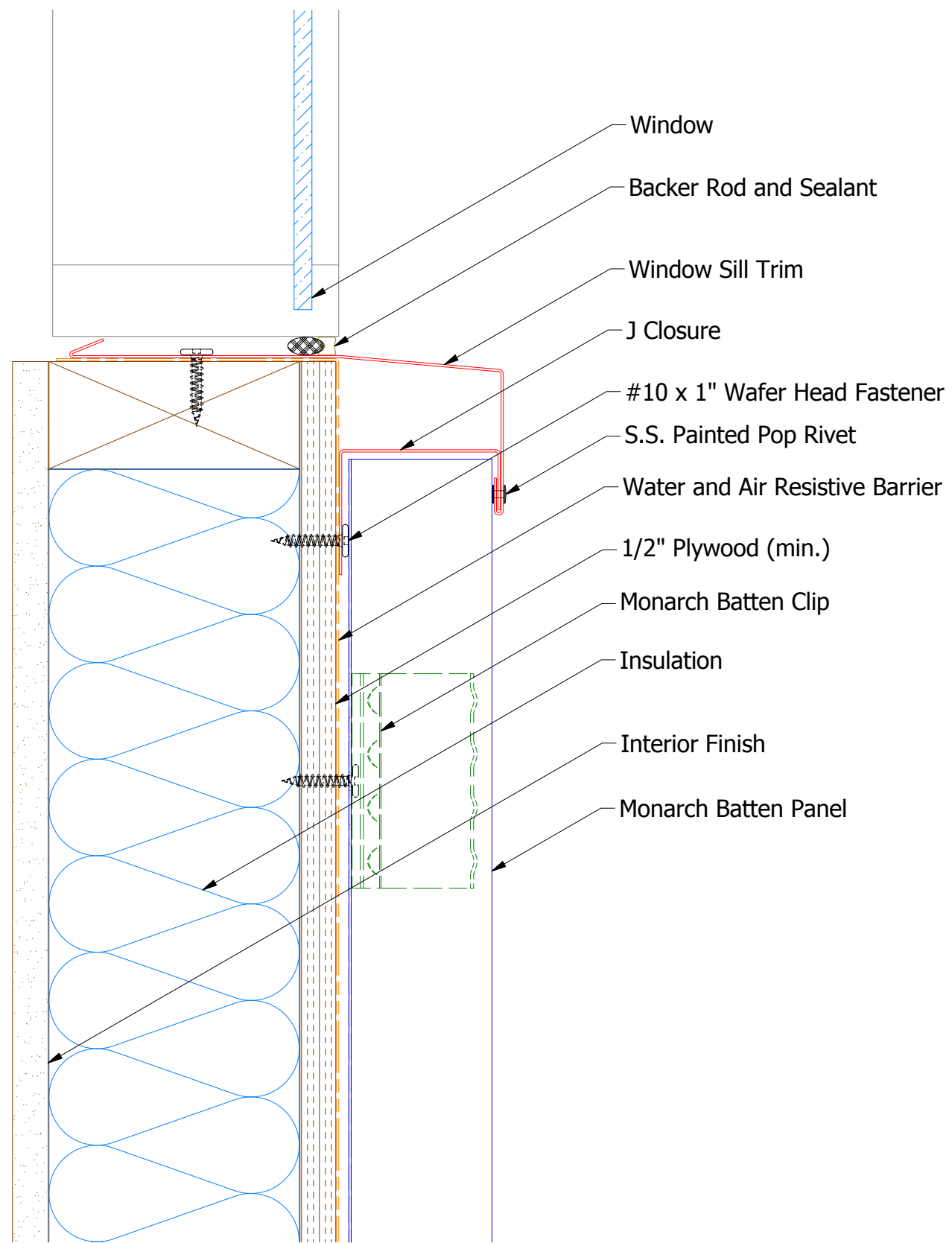
Angle Trim



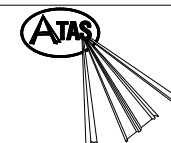
J Channel

Note: * denotes color side.

| | | | | | | | |
|----------|--|------|-------------------------|------|-----------|--|--|
| REV. NO. | | DATE | DESCRIPTION OF REVISION | BY | APP | TITLE Monarch Batten Jamb Detail | |
| DWG. NO. | | DR | DMR | DATE | 6/28/2019 | MATERIAL | |
| SH. SIZE | | B | SCALE | X:X | | ATAS INTERNATIONAL, INC Allentown PA 610-395-8445 Mesa AZ 480-558-7210 | |



Note: * denotes color side.



ATAS INTERNATIONAL, INC
 Allentown PA
 610-395-8445
 Mesa AZ
 480-558-7210

| TITLE | | | |
|-----------------------------------|----------|-------------------------|-----------|
| Monarch Batten Window Sill Detail | | | |
| DWG. NO. | DR | DATE | |
| | DMR | 7/1/2019 | |
| MATERIAL | APP | DATE | |
| | SH. SIZE | B | SCALE X:X |
| REV. NO. | DATE | DESCRIPTION OF REVISION | BY APP |
| | | | |