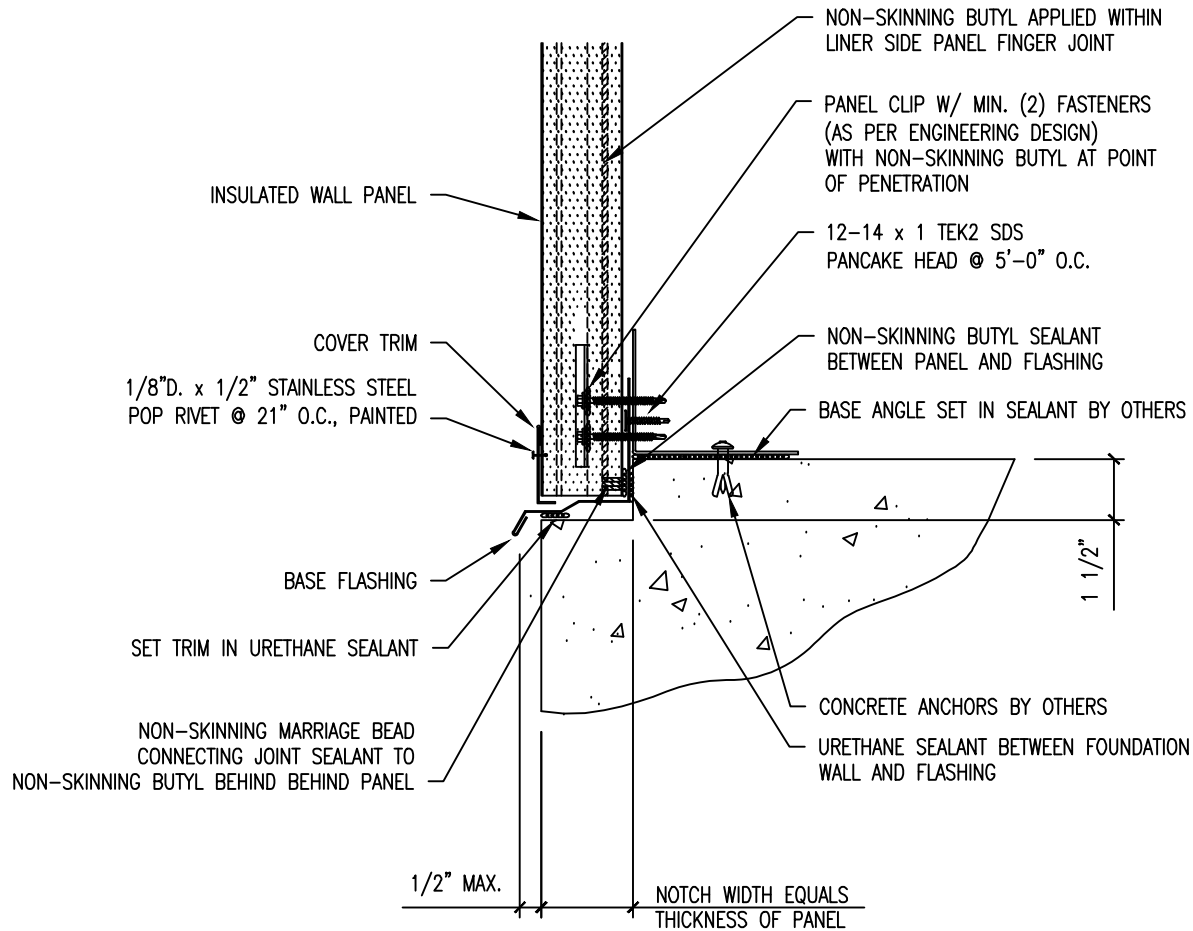


** THE DETAIL SHOWN IS SUBJECT TO CHANGE WITHOUT NOTICE.



ATAS INTERNATIONAL, INC
 Allentown PA
 610-395-8445
 Mesa AZ
 480-558-7210

					TITLE		Vertical Wall-Sheet Metal Flashing-Base-Flush	
					DWG. NO.		DR	DATE
					MATERIAL		APP	DATE
REV. NO.	DATE	DESCRIPTION OF REVISION	BY	APP	SH. SIZE		SCALE	X:X



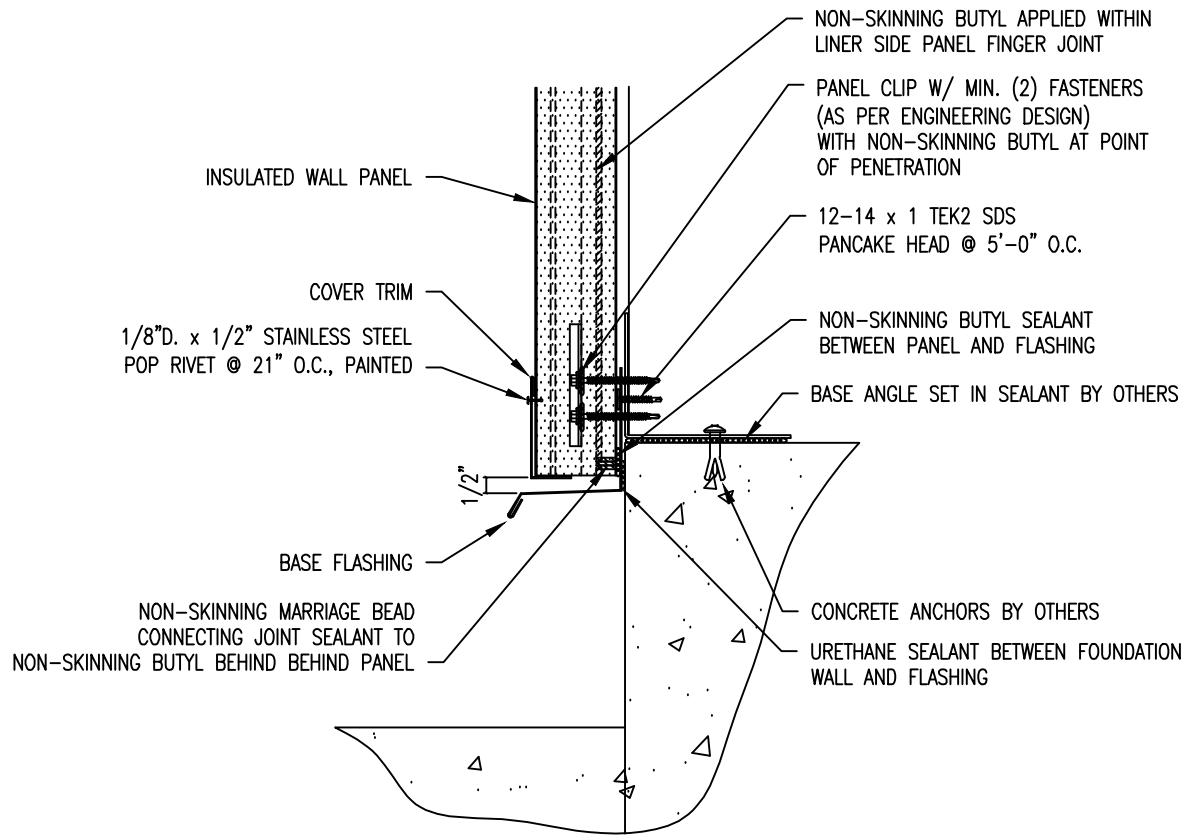
** THE DETAIL SHOWN IS SUBJECT TO CHANGE WITHOUT NOTICE.



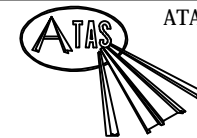
ATAS INTERNATIONAL, INC
 Allentown PA
 610-395-8445
 Mesa AZ
 480-558-7210

REV. NO.	DATE	DESCRIPTION OF REVISION	BY	APP

TITLE		
Vertical Wall-Sheet Metal Flashing-Base-Notched		
DWG. NO.	DR	DATE
	APP	DATE
MATERIAL	SH. SIZE	SCALE
		X:X

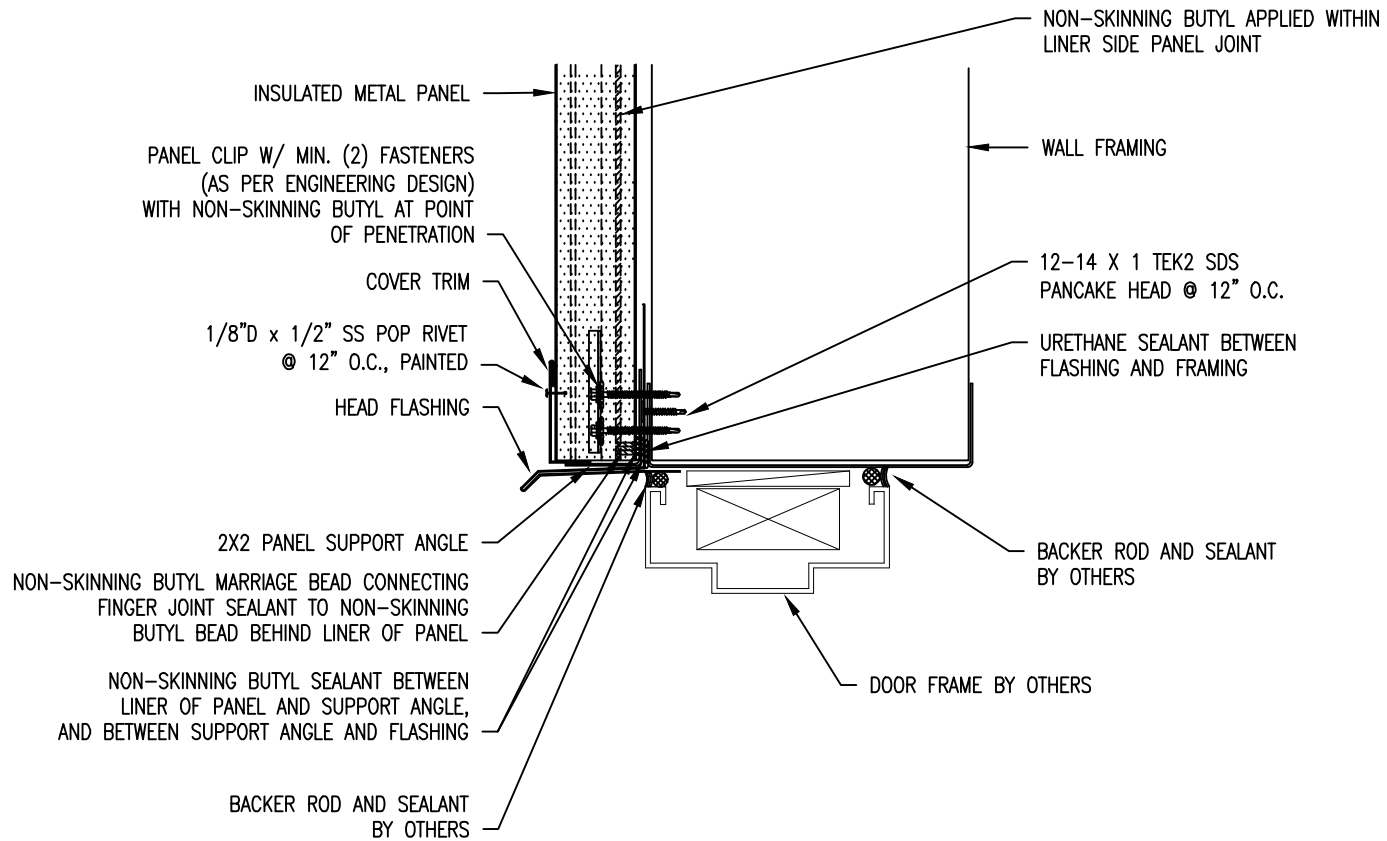


** THE DETAIL SHOWN IS SUBJECT TO CHANGE WITHOUT NOTICE.



ATAS INTERNATIONAL, INC
 Allentown PA
 610-395-8445
 Mesa AZ
 480-558-7210

					TITLE			
					Vertical Wall-Sheet Metal Flashing-Base-Overhang			
					DWG. NO.	DR	DATE	
					MATERIAL		APP	DATE
REV. NO.	DATE	DESCRIPTION OF REVISION	BY	APP	SH. SIZE	SCALE	X:X	



** THE DETAIL SHOWN IS SUBJECT TO CHANGE WITHOUT NOTICE.



ATAS INTERNATIONAL, INC
 Allentown PA
 610-395-8445
 Mesa AZ
 480-558-7210

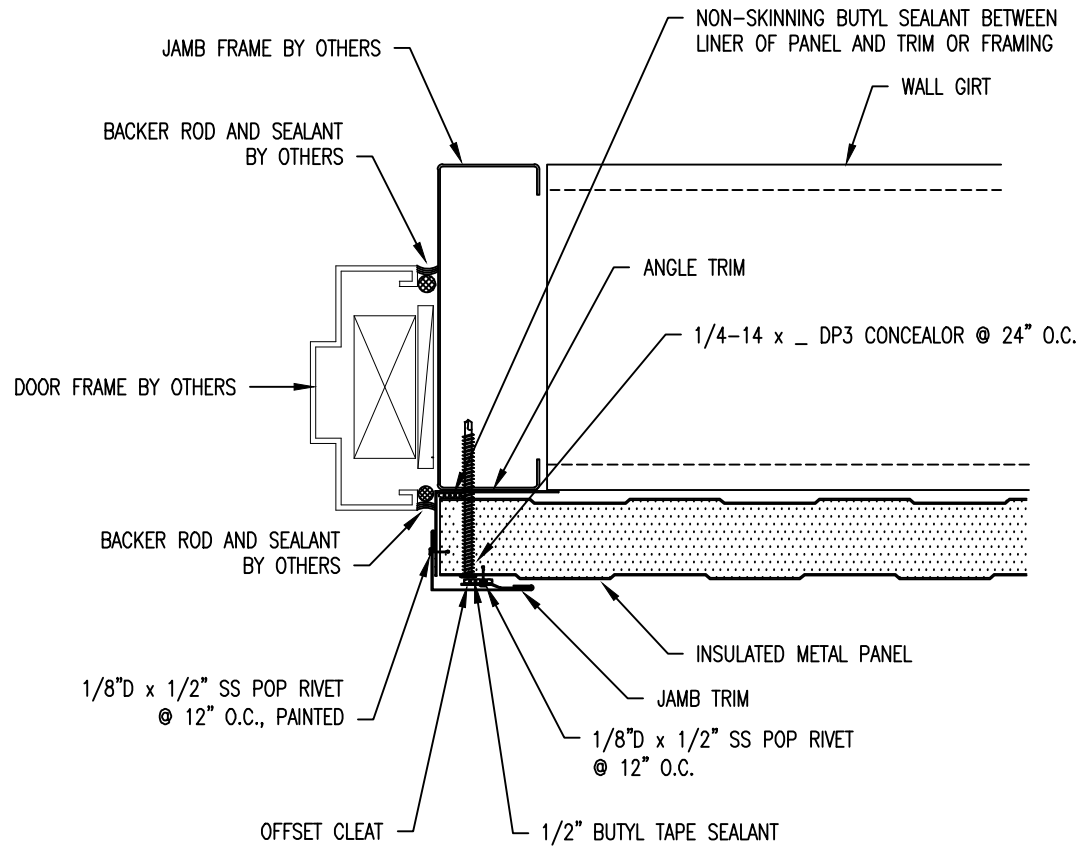
TITLE Vertical Wall-Sheet Metal Flashing-Door Head-Supported

DWG. NO.	DR	DATE
MATERIAL	APP	DATE
REV. NO.	SH. SIZE	SCALE

REV. NO.	DATE	DESCRIPTION OF REVISION	BY	APP

X:X

*OPTION AVAILABLE TO OMIT OFFSET CLEAT BY CHOOSING TO POP RIVET FRONT FACE OF JAMB TRIM DIRECTLY TO PANEL.



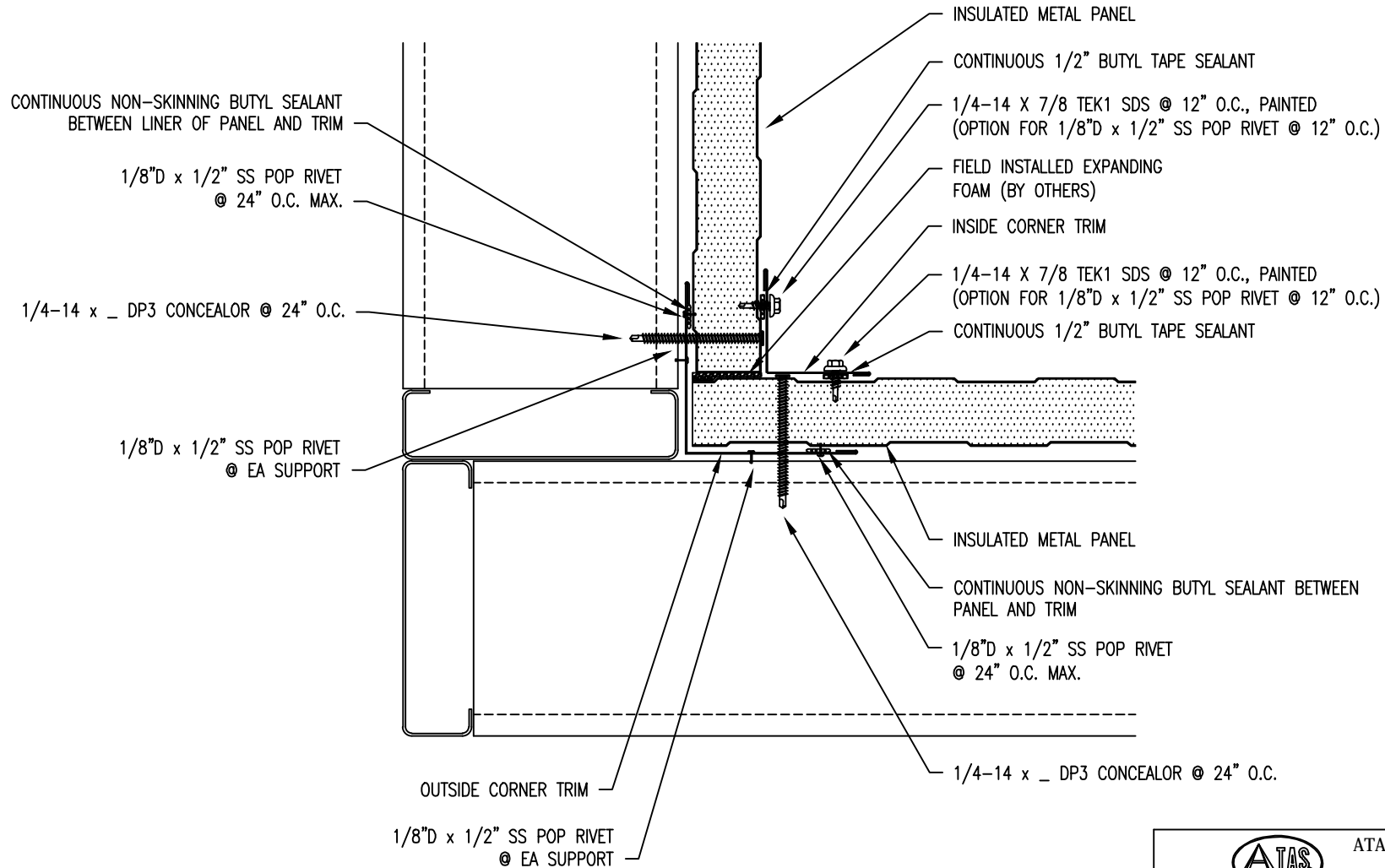
** THE DETAIL SHOWN IS SUBJECT TO CHANGE WITHOUT NOTICE.



ATAS INTERNATIONAL, INC
 Allentown PA
 610-395-8445
 Mesa AZ
 480-558-7210

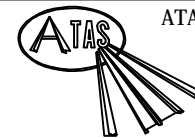
TITLE Vertical Wall-Sheet Metal Flashing- Door Jamb			
DWG. NO.		DR	DATE
MATERIAL		APP	DATE
REV. NO.		SH. SIZE	SCALE X:X

REV. NO.	DATE	DESCRIPTION OF REVISION	BY	APP



NOTE: FIELD CUT STARTING PANEL AND ENDING PANEL AS REQUIRED AT CORNER TRANSITION.

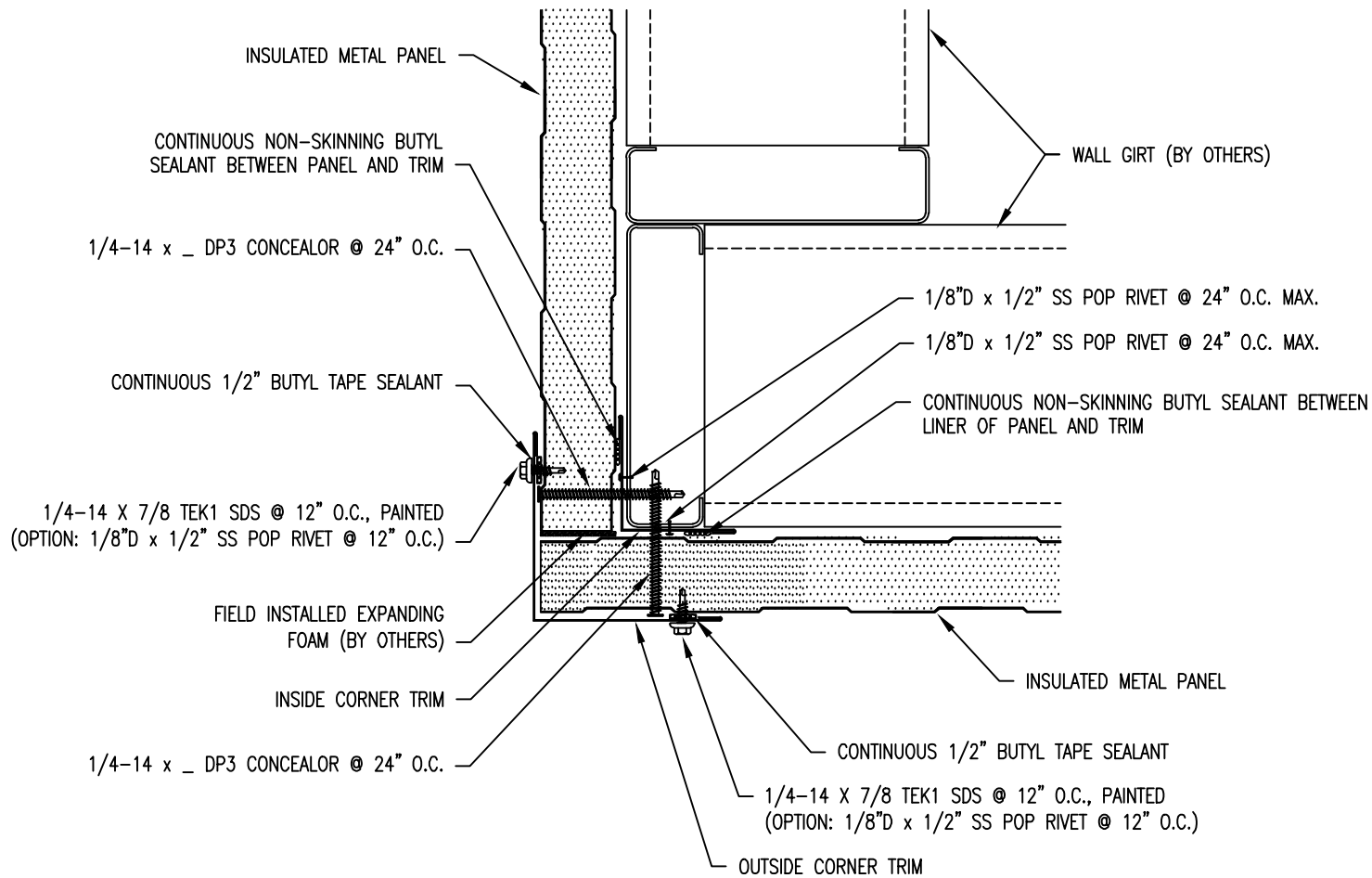
** THE DETAIL SHOWN IS SUBJECT TO CHANGE WITHOUT NOTICE.



ATAS INTERNATIONAL, INC
 Allentown PA
 610-395-8445
 Mesa AZ
 480-558-7210

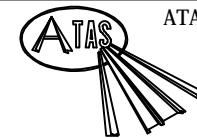
REV. NO.	DATE	DESCRIPTION OF REVISION	BY	APP

TITLE		Vertical Wall-Sheet Metal Flashing-Inside Corner	
DWG. NO.	DR	DATE	
MATERIAL	APP	DATE	
SH. SIZE	SCALE	X:X	



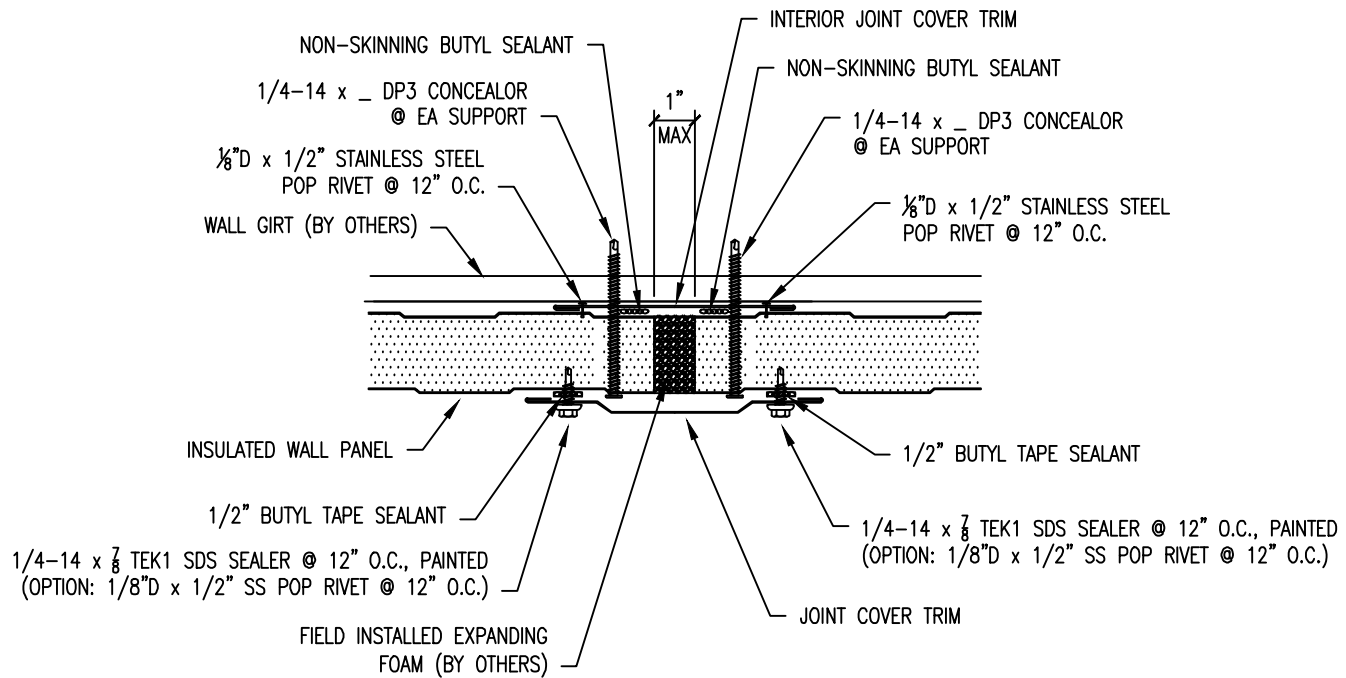
NOTE: FIELD CUT STARTING PANEL AND ENDING PANEL AS REQUIRED AT CORNER TRANSITION.

** THE DETAIL SHOWN IS SUBJECT TO CHANGE WITHOUT NOTICE.

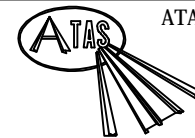


ATAS INTERNATIONAL, INC
 Allentown PA
 610-395-8445
 Mesa AZ
 480-558-7210

TITLE					DR		DATE	
Vertical Wall-Sheet Metal Flashing-Outside Corner					APP		DATE	
MATERIAL					SH. SIZE		SCALE	
REV. NO.	DATE	DESCRIPTION OF REVISION	BY	APP			X:X	



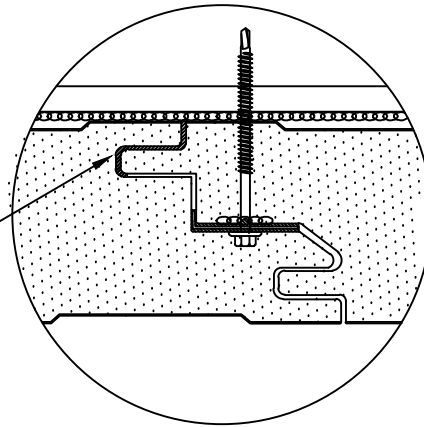
** THE DETAIL SHOWN IS SUBJECT TO CHANGE WITHOUT NOTICE.



ATAS INTERNATIONAL, INC
 Allentown PA
 610-395-8445
 Mesa AZ
 480-558-7210

					TITLE		Vertical Wall-Sheet Metal Flashing-Side Joint	
					DWG. NO.		DR	DATE
					MATERIAL		APP	DATE
REV. NO.	DATE	DESCRIPTION OF REVISION	BY	APP	SH. SIZE		SCALE	X:X

CONTINUOUS NON-SKINNING BUTYL APPLIED WITHIN LINER SIDE PANEL JOINT WITH MARRIAGE BEAD CONNECTING IT TO PERIMETER NON-SKINNING BUTYL BEHIND PANEL



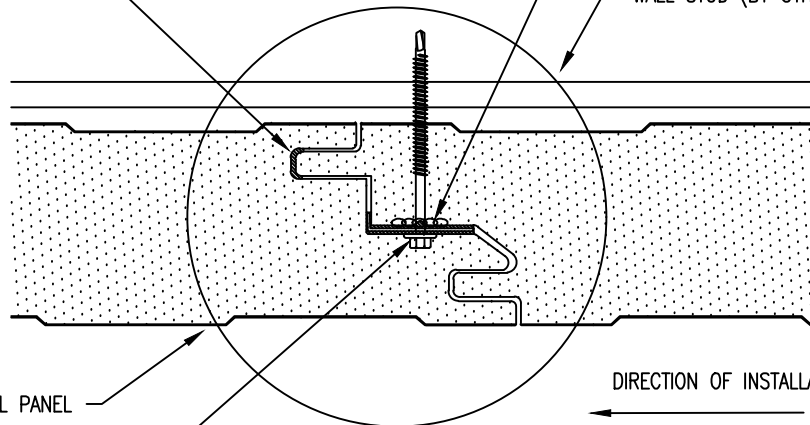
CONDITION AT PERIMETER OF WALL

CONTINUOUS NON-SKINNING BUTYL APPLIED WITHIN LINER SIDE PANEL JOINT

MINIMUM (2) FASTENERS (TYPE PER ENGINEERING DESIGN) WITH NON-SKINNING BUTYL AT THE POINT OF PENETRATION

WALL STUD (BY OTHERS)

INTERIOR



DIRECTION OF INSTALLATION ←

INSULATED WALL PANEL

WALL PANEL CLIP

EXTERIOR

3/8" UNIFORM BEAD OF NON-SKINNING BUTYL SEALANT MUST BE APPLIED IN THE INTERIOR FEMALE GROOVE. APPLYING SEALANT IN THE EXTERIOR FEMALE GROOVE IS OPTIONAL DEPENDING ON VAPOR SEAL REQUIREMENTS

** THE DETAIL SHOWN IS SUBJECT TO CHANGE WITHOUT NOTICE

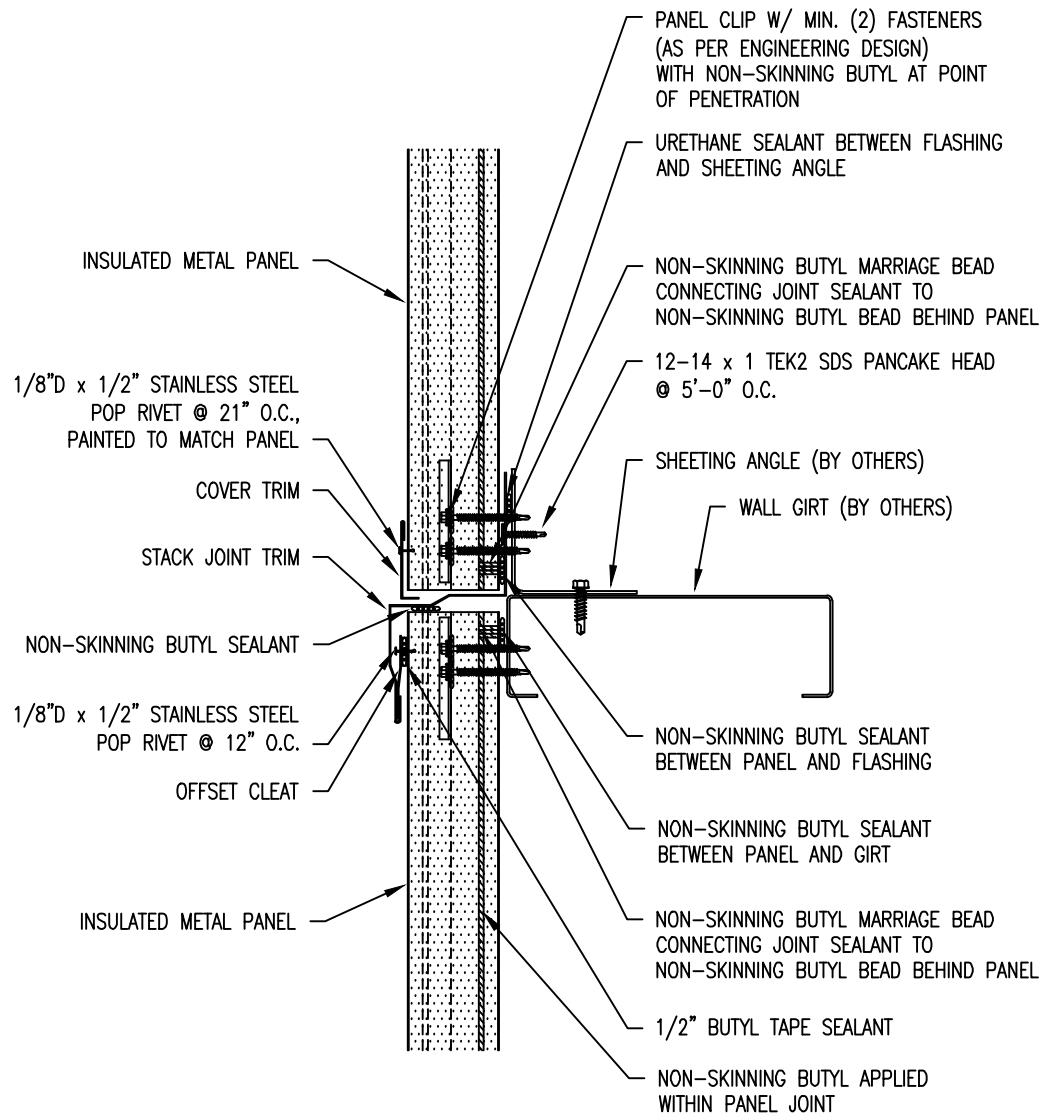


ATAS INTERNATIONAL, INC
Allentown PA
610-395-8445
Mesa AZ
480-558-7210

TITLE
Vertical Wall-Sheet Metal Flashing-Side Lap

DWG. NO.	DR	DATE
MATERIAL	APP	DATE
SH. SIZE	SCALE	X:X

REV. NO.	DATE	DESCRIPTION OF REVISION	BY	APP

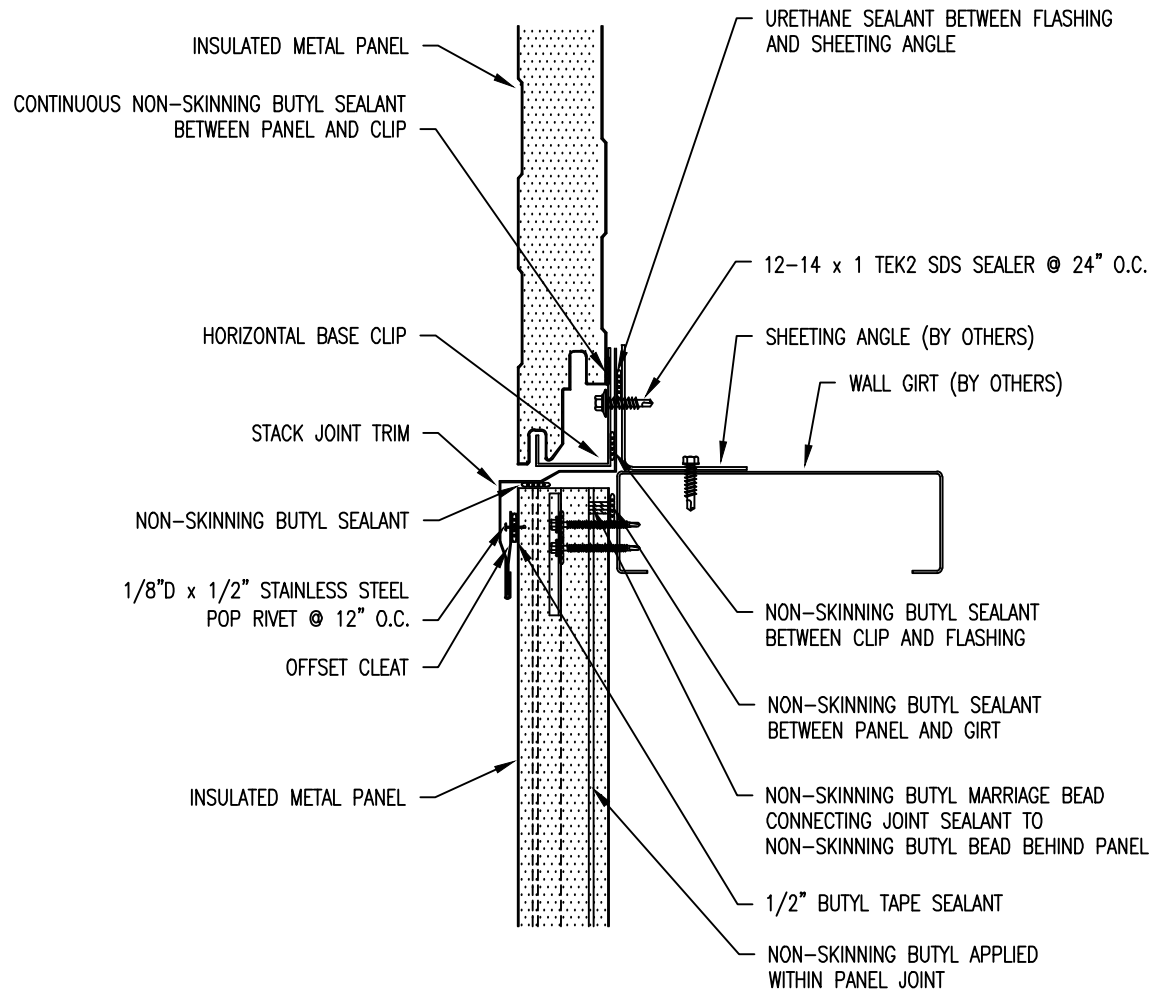


** THE DETAIL SHOWN IS SUBJECT TO CHANGE WITHOUT NOTICE.

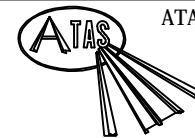


ATAS INTERNATIONAL, INC
 Allentown PA
 610-395-8445
 Mesa AZ
 480-558-7210

					TITLE		Vertical Wall-Sheet Metal Flashing-Stack Joint	
					DWG. NO.		DR	DATE
					MATERIAL		APP	DATE
REV. NO.	DATE	DESCRIPTION OF REVISION	BY	APP			SH. SIZE	SCALE
								X:X



** THE DETAIL SHOWN IS SUBJECT TO CHANGE WITHOUT NOTICE.



ATAS INTERNATIONAL, INC
 Allentown PA
 610-395-8445
 Mesa AZ
 480-558-7210

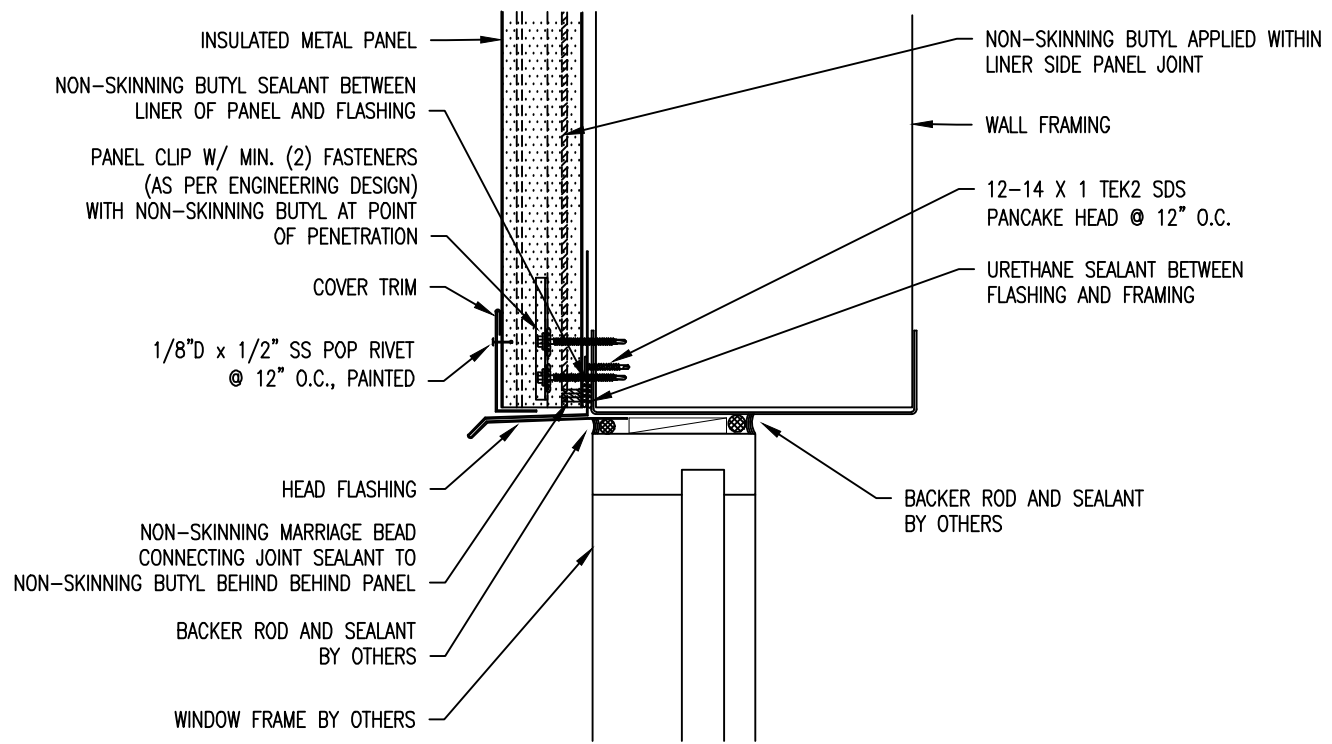
TITLE Vertical Wall-Sheet Metal Flashing-Stack Joint-
Vertical to Horizontal

DWG. NO. DR DATE

MATERIAL APP DATE

SH. SIZE SCALE **X:X**

REV. NO.	DATE	DESCRIPTION OF REVISION	BY	APP

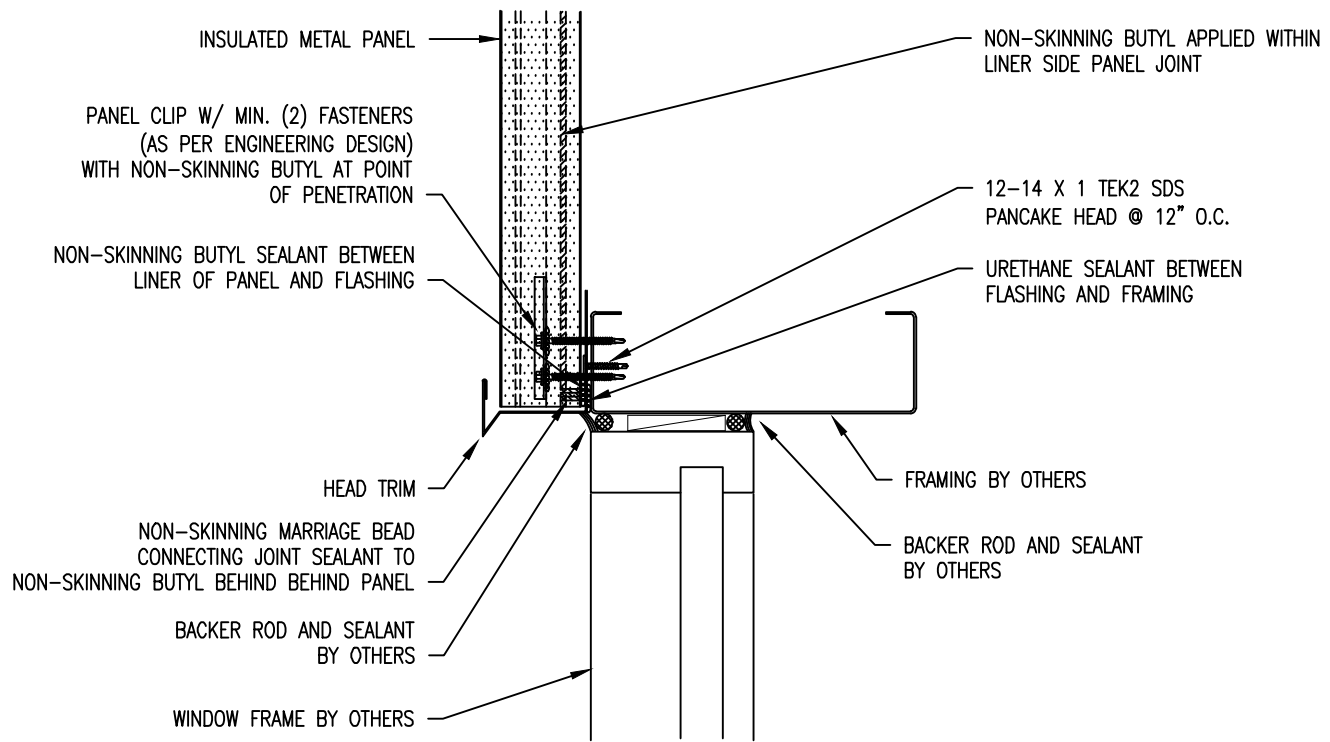


** THE DETAIL SHOWN IS SUBJECT TO CHANGE WITHOUT NOTICE.



ATAS INTERNATIONAL, INC
 Allentown PA
 610-395-8445
 Mesa AZ
 480-558-7210

					TITLE			
					Vertical Wall-Sheet Metal Flashing-Window Head			
					DWG. NO.	DR	DATE	
					MATERIAL		APP	DATE
REV. NO.	DATE	DESCRIPTION OF REVISION	BY	APP	SH. SIZE	SCALE	X:X	



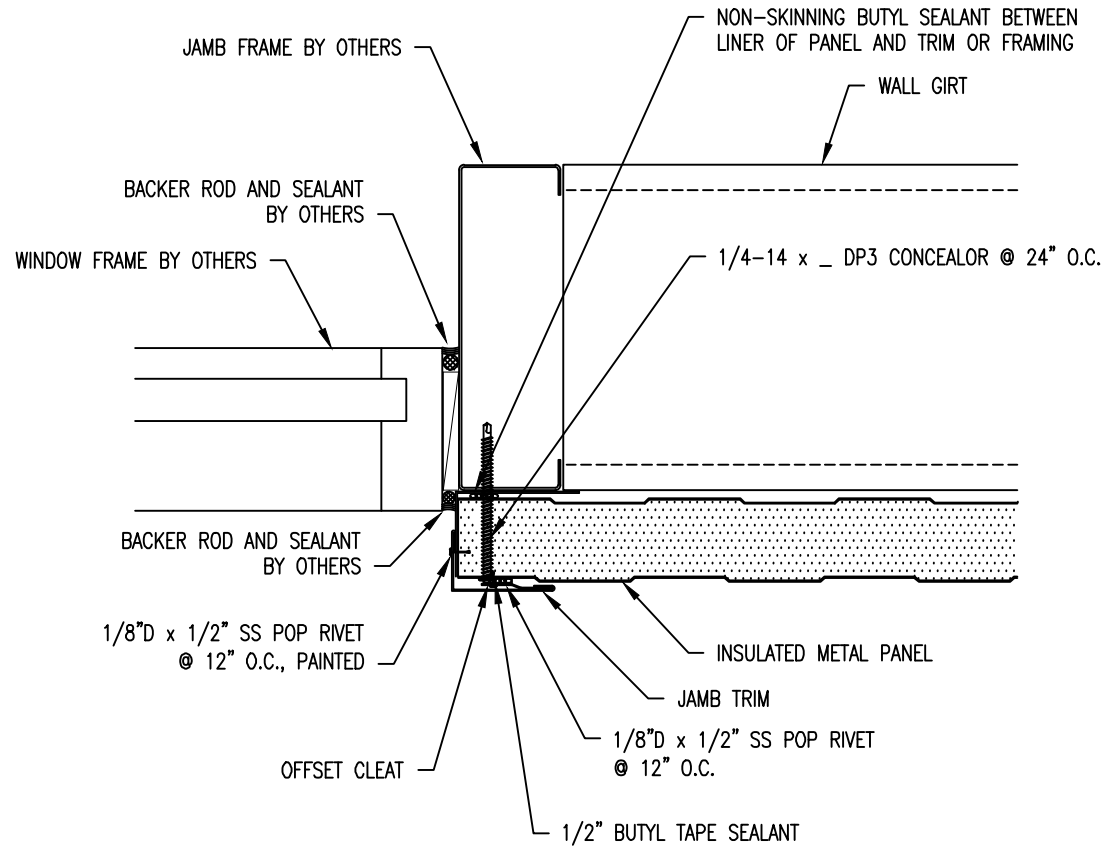
** THE DETAIL SHOWN IS SUBJECT TO CHANGE WITHOUT NOTICE.



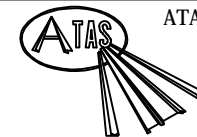
ATAS INTERNATIONAL, INC
Allentown PA
610-395-8445
Mesa AZ
480-558-7210

						TITLE		Vertical Wall-Sheet Metal Flashing Window Header-Utility	
						DWG. NO.		DR	DATE
						MATERIAL		APP	DATE
REV. NO.	DATE	DESCRIPTION OF REVISION				BY	APP	SH. SIZE	SCALE
									X:X

*OPTION AVAILABLE TO OMIT OFFSET CLEAT BY CHOOSING TO POP RIVET FRONT FACE OF JAMB TRIM DIRECTLY TO PANEL.



** THE DETAIL SHOWN IS SUBJECT TO CHANGE WITHOUT NOTICE.



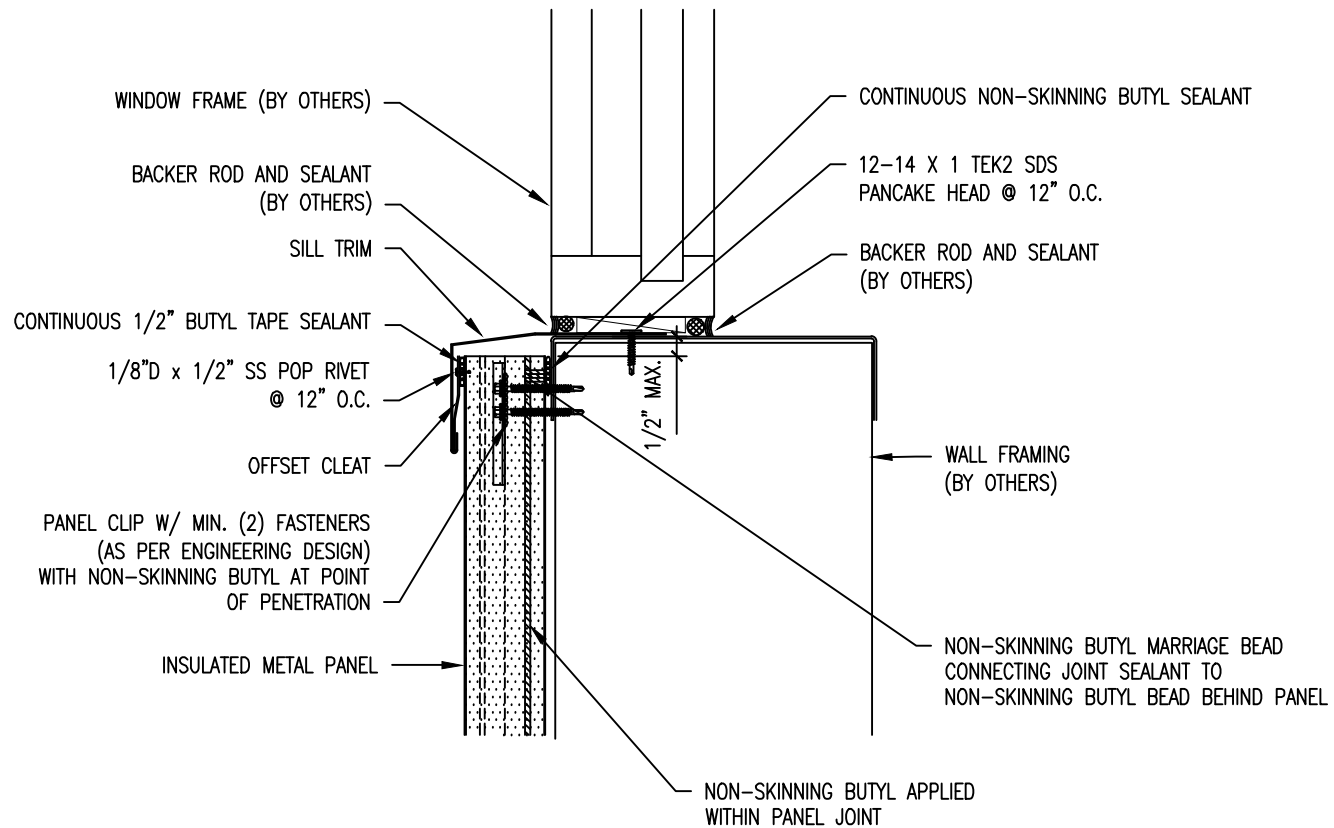
ATAS INTERNATIONAL, INC
 Allentown PA
 610-395-8445
 Mesa AZ
 480-558-7210

TITLE Vertical Wall-Sheet Metal Flashing
 Window Jamb

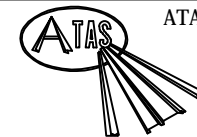
DWG. NO.	DR	DATE
MATERIAL	APP	DATE
	SH. SIZE	SCALE
		X:X

REV. NO.	DATE	DESCRIPTION OF REVISION	BY	APP

*OPTION AVAILABLE TO OMIT OFFSET CLEAT BY CHOOSING TO POP RIVET FRONT FACE OF SILL TRIM DIRECTLY TO PANEL.

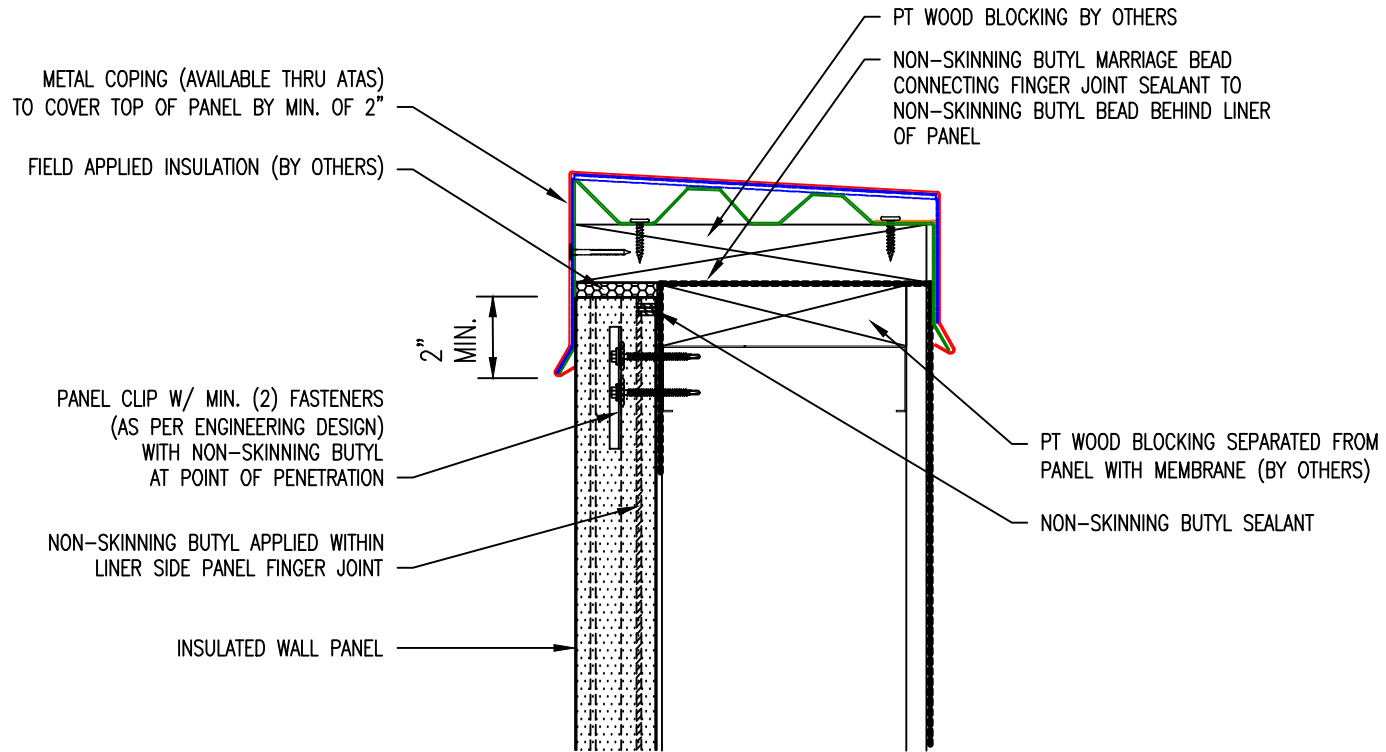


** THE DETAIL SHOWN IS SUBJECT TO CHANGE WITHOUT NOTICE.

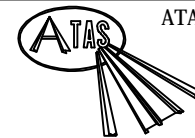


ATAS INTERNATIONAL, INC
 Allentown PA
 610-395-8445
 Mesa AZ
 480-558-7210

TITLE					Vertical Wall-Sheet Metal Flashing Window Sill		
DWG. NO.					DR	DATE	
					APP	DATE	
MATERIAL					SH. SIZE	SCALE	
REV. NO.	DATE	DESCRIPTION OF REVISION	BY	APP			X:X



** THE DETAIL SHOWN IS SUBJECT TO CHANGE WITHOUT NOTICE.



ATAS INTERNATIONAL, INC
 Allentown PA
 610-395-8445
 Mesa AZ
 480-558-7210

					TITLE		Vertical Wall-Top of Wall-Parapet	
					DWG. NO.		DR	DATE
					MATERIAL		APP	DATE
REV. NO.	DATE	DESCRIPTION OF REVISION	BY	APP	SH. SIZE		SCALE	X:X