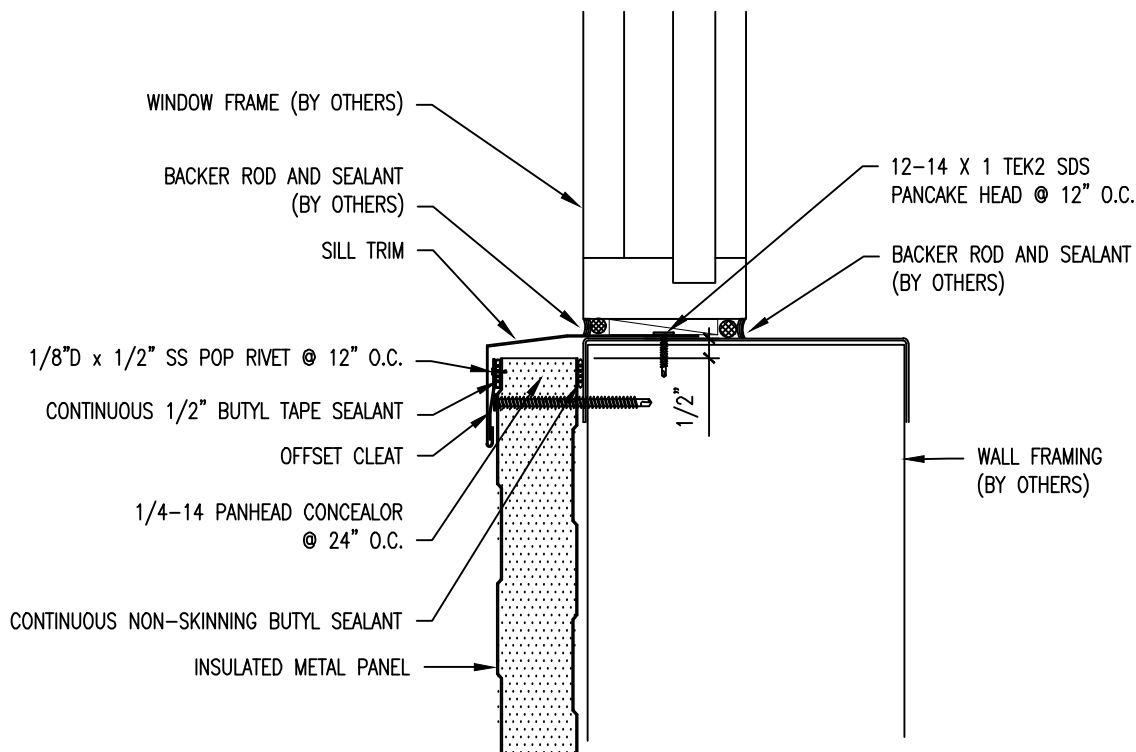


*OPTION AVAILABLE TO OMIT OFFSET CLEAT BY CHOOSING TO POP RIVET FRONT FACE OF SILL TRIM DIRECTLY TO PANEL.



** THE DETAIL SHOWN IS SUBJECT TO CHANGE WITHOUT NOTICE.



ATAS INTERNATIONAL, INC
 Allentown PA
 610-395-8445
 Mesa AZ
 480-558-7210

TITLE					Horizontal Wall-Sheet Metal Flashing-Window Sill- Arch	
DWG. NO.			DR	DATE		
MATERIAL			APP	DATE		
REV. NO.	DATE	DESCRIPTION OF REVISION	BY	APP	SH. SIZE	SCALE
						X:X