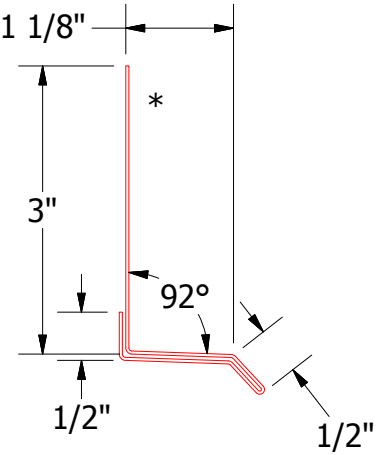
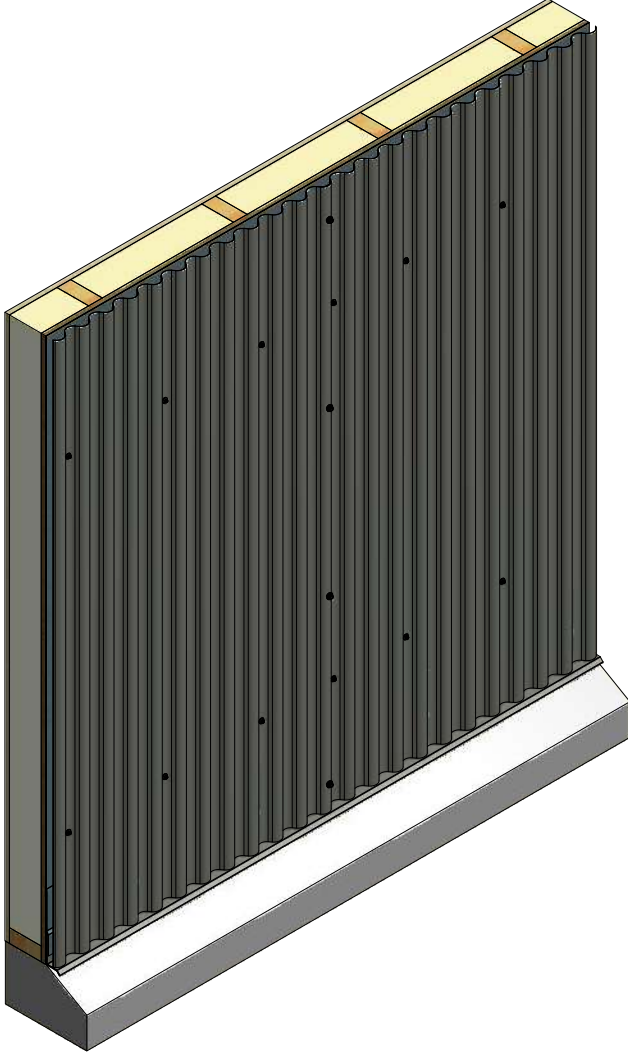
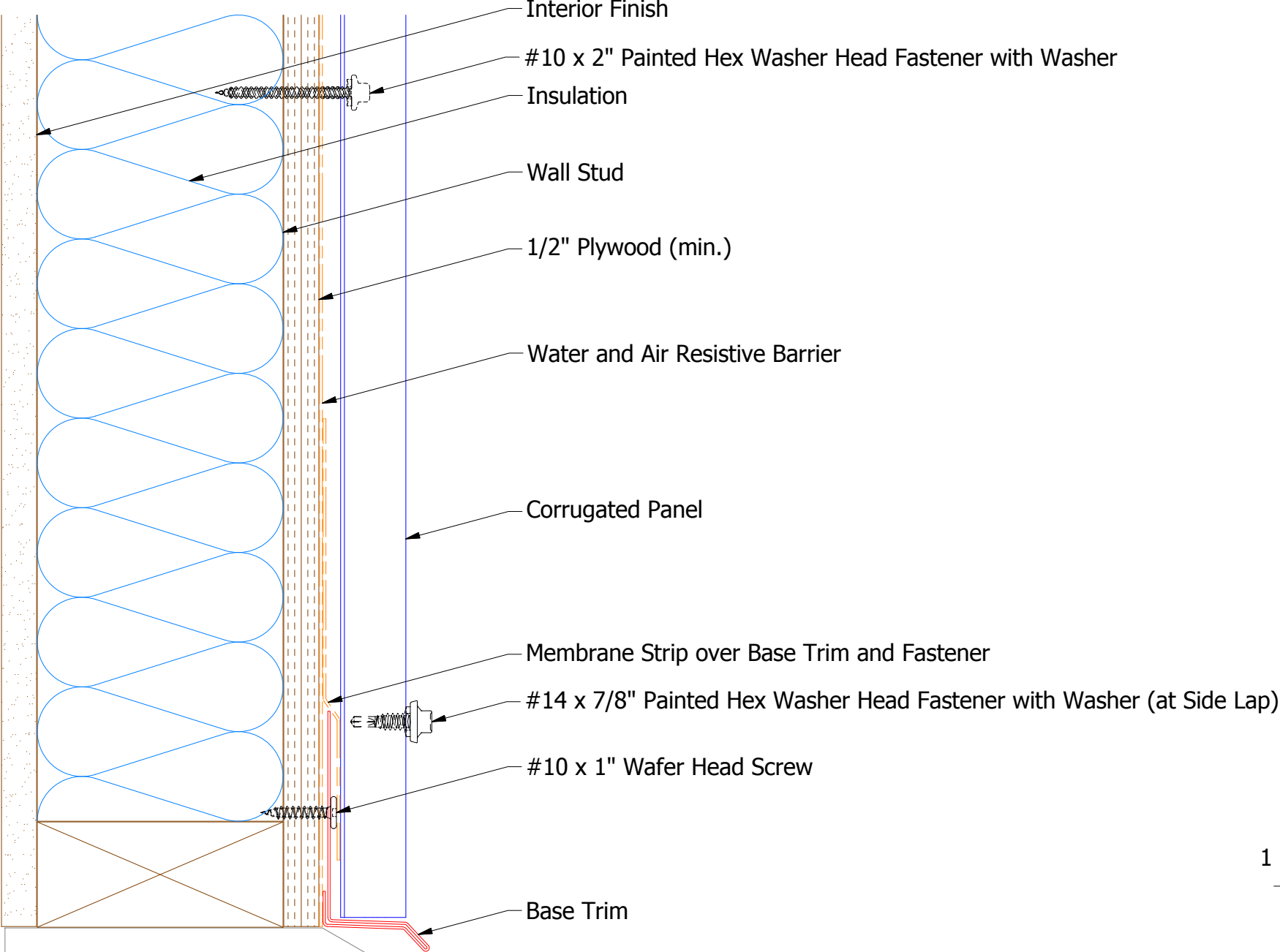



Note: This Detail is for Belvedere Corrugated Panel installed on a Wall.

										Belvedere Corrugated Fastening Detail	

Vertical Panel

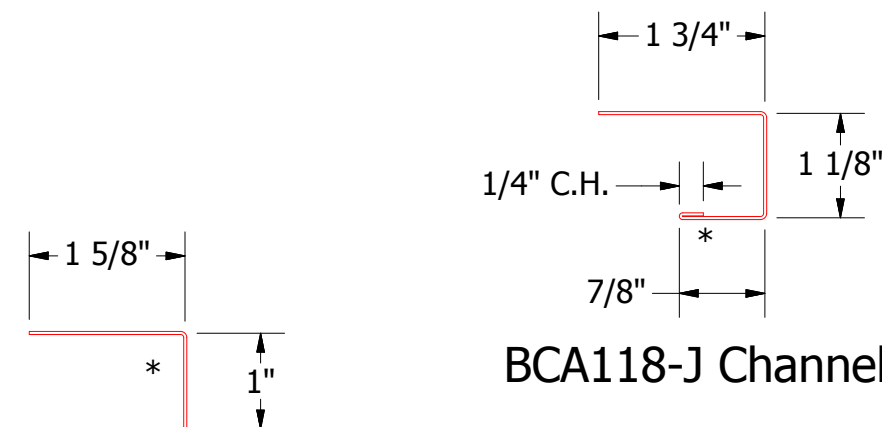
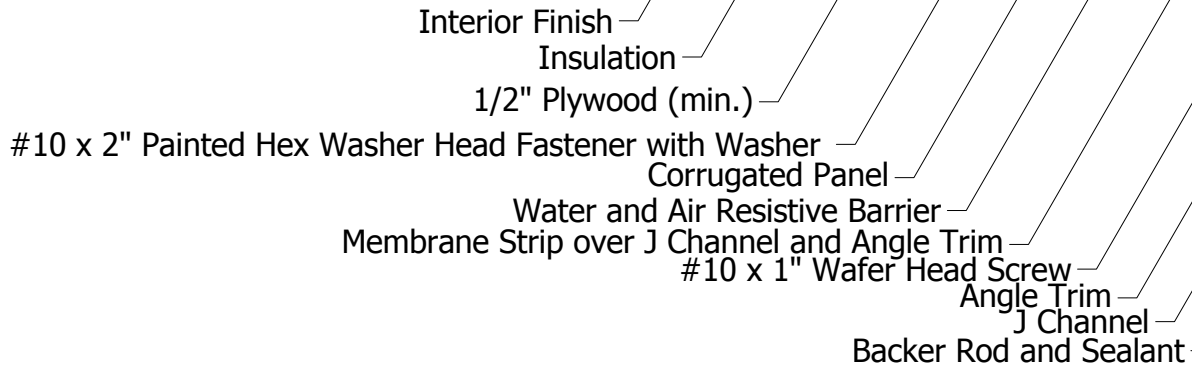


BCA661-Base Trim

		ATAS INTERNATIONAL, INC Allentown PA 610-395-8445 Mesa AZ 480-558-7210	
TITLE Belvedere Corrugated Base Detail			
DWG. NO.		DR KRK	DATE 8/18/2014
MATERIAL		APP DAS	DATE 7/29/16
		SH. SIZE B	SCALE X:X

REV. NO.	DATE	DESCRIPTION OF REVISION	BY	APP

Vertical Panel



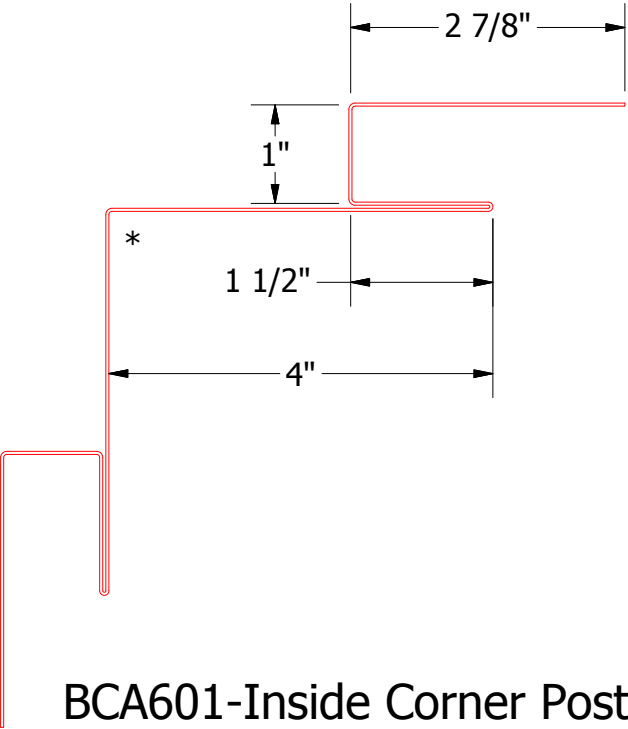
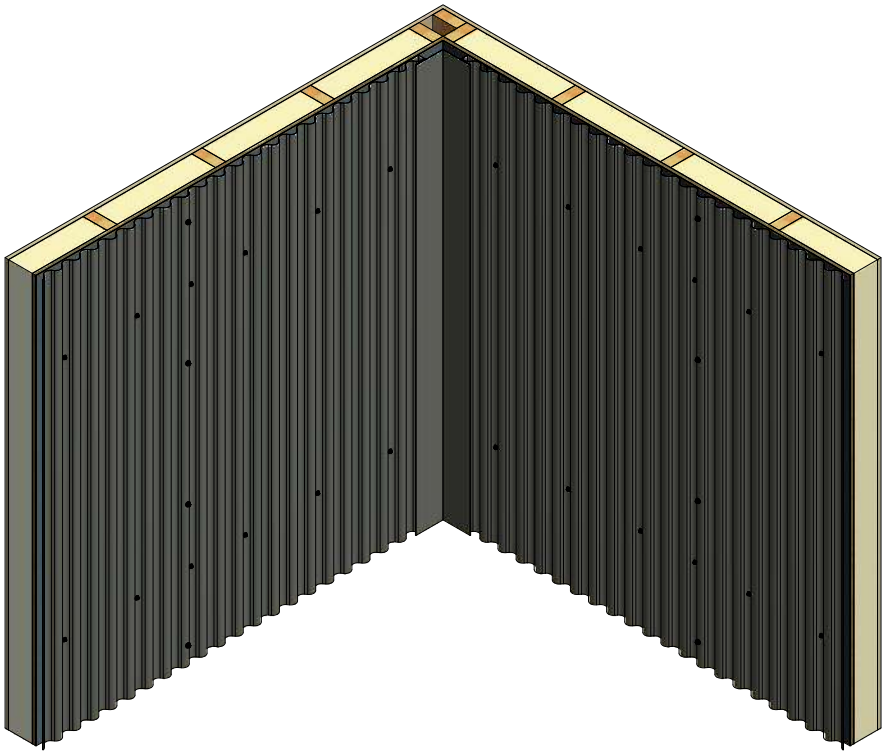
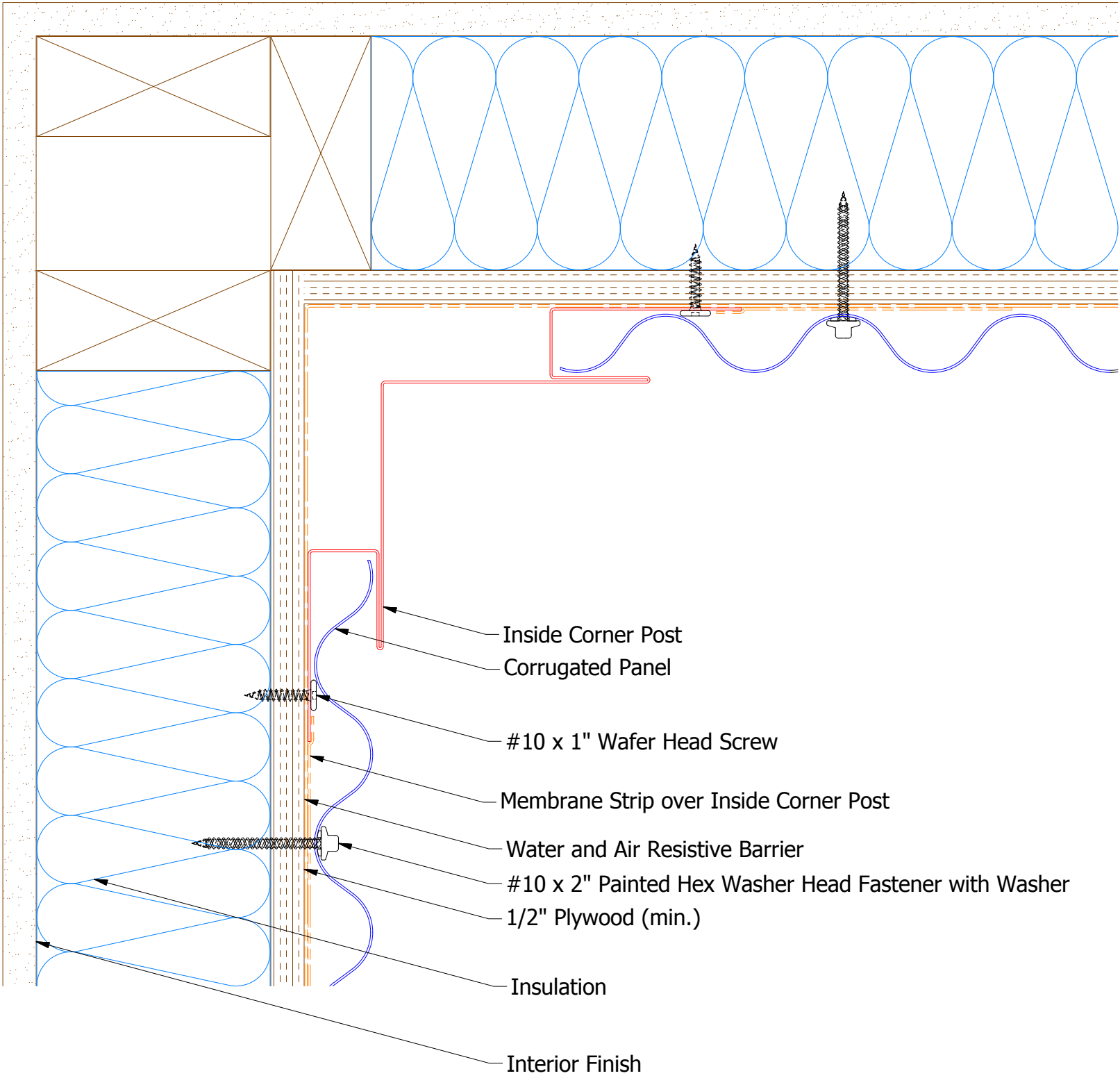
BCA118-J Channel

BCA680-Angle Trim

					Belvedere Corrugated Endwall Detail			
					DWG. NO.		DR	DATE
							KRK	5/8/2015
					MATERIAL		APP	DATE
							DAS	
REV. NO.	DATE	DESCRIPTION OF REVISION	BY	APP			SH. SIZE	SCALE
							B	X:X

ATAS **ATAS INTERNATIONAL, INC**
Allentown PA
610-395-8445
Mesa AZ
480-558-7210

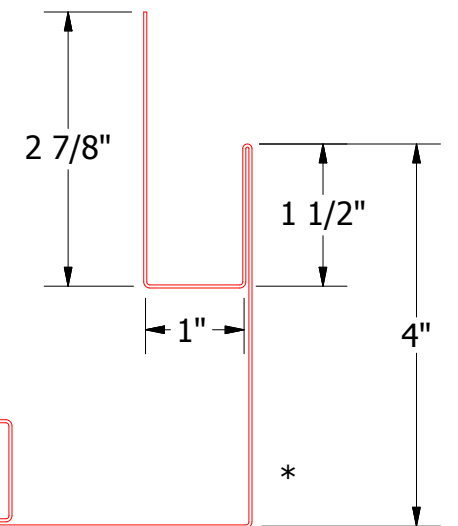
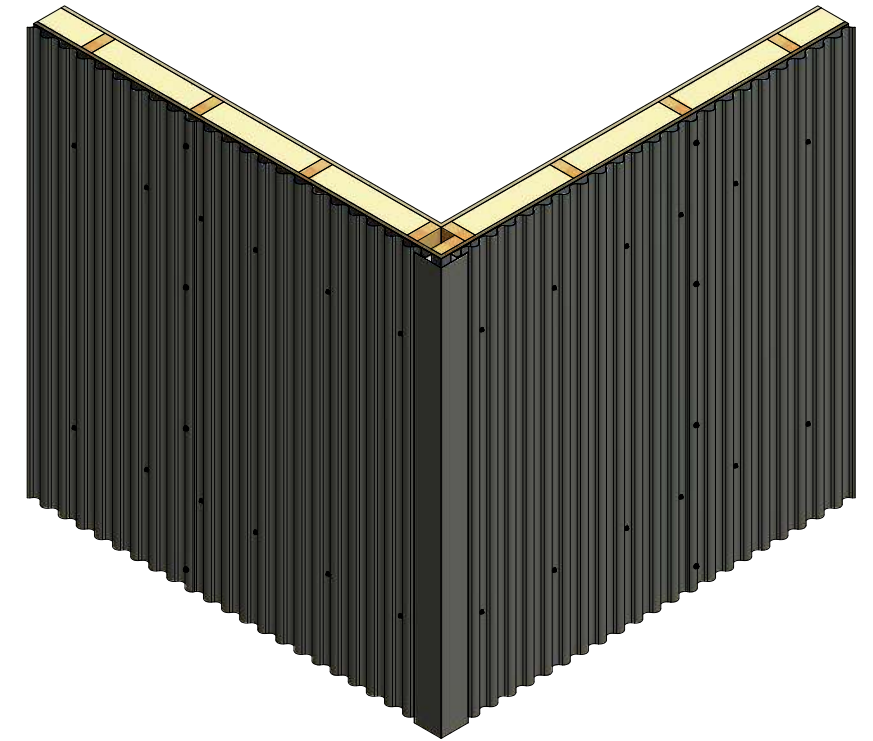
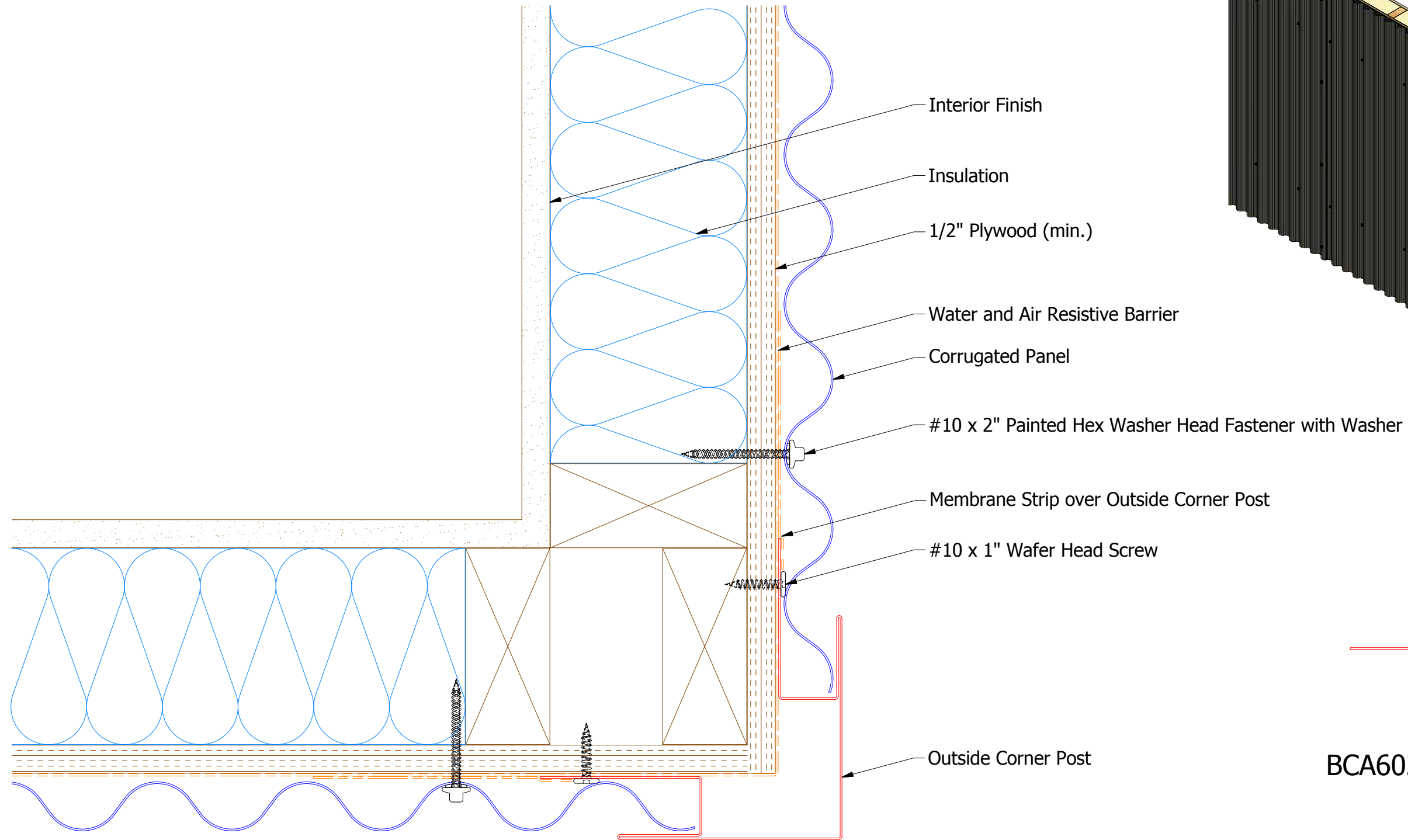
Vertical Panel



BCA601-Inside Corner Post

								Belvedere Corrugated Inside Corner Detail	

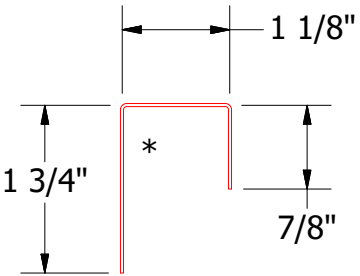
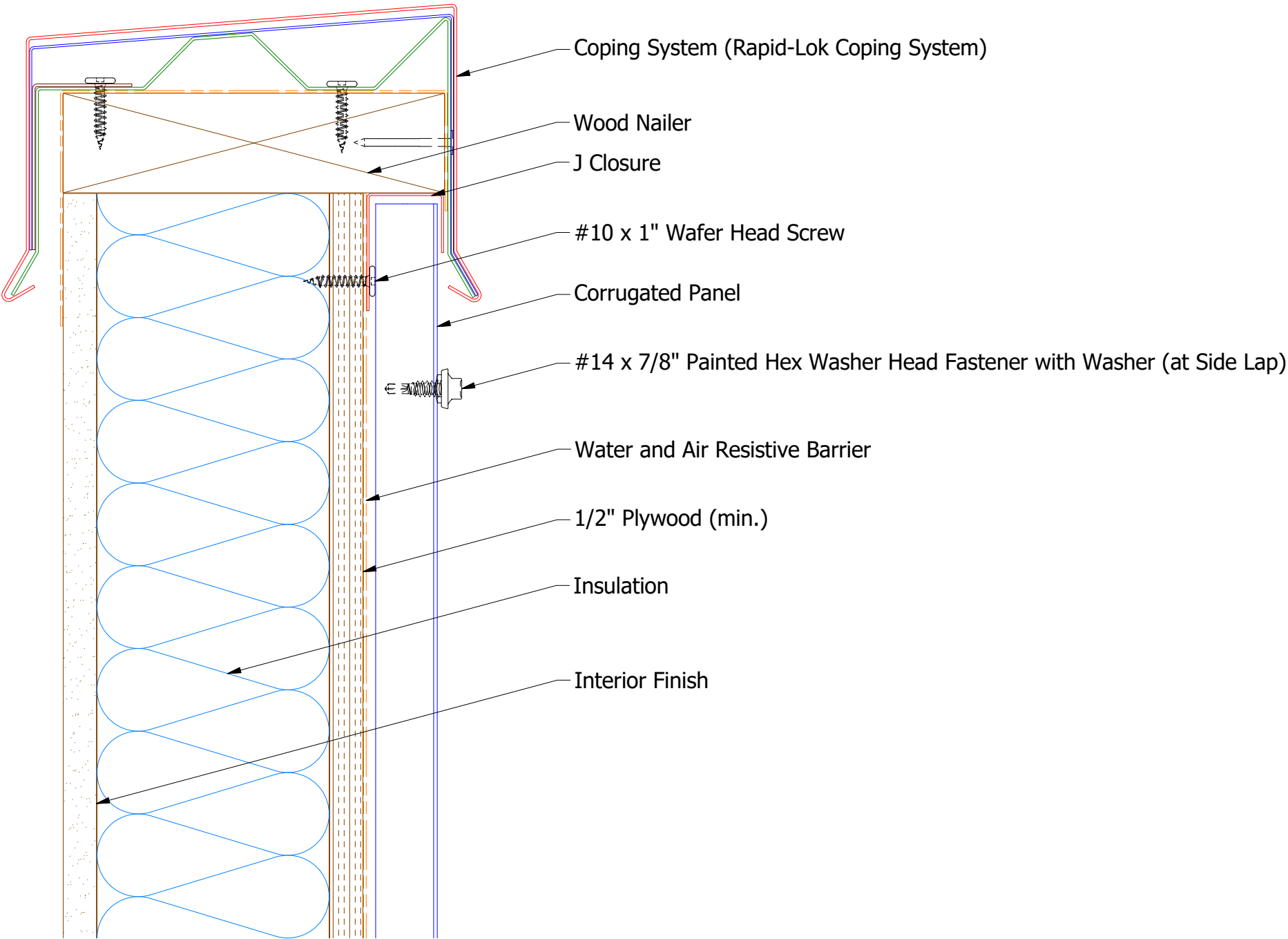
Vertical Panel



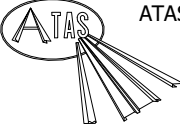
BCA602-Outside Corner Post

					TITLE Belvedere Corrugated Outside Corner Detail						
					DWG. NO.			DR	KRK	DATE	5/11/2015
								APP	DAS	DATE	7/29/16
					MATERIAL			SH. SIZE	B	SCALE	X:X
REV. NO.	DATE	DESCRIPTION OF REVISION			BY	APP					

Vertical Panel



BCA270 - J Closure

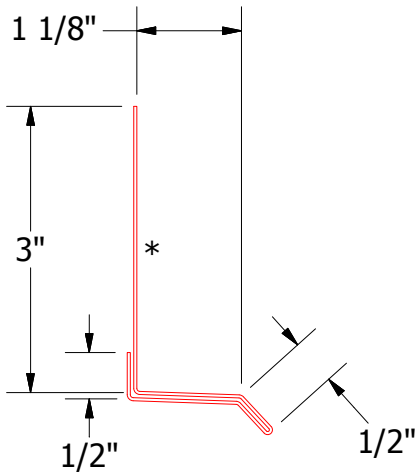
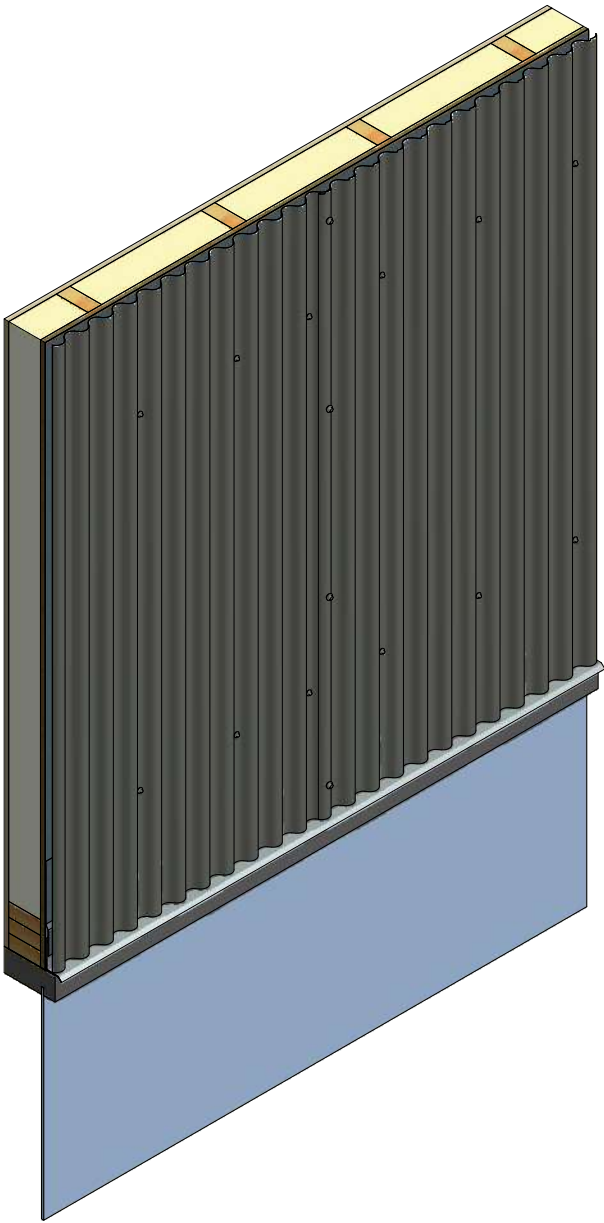
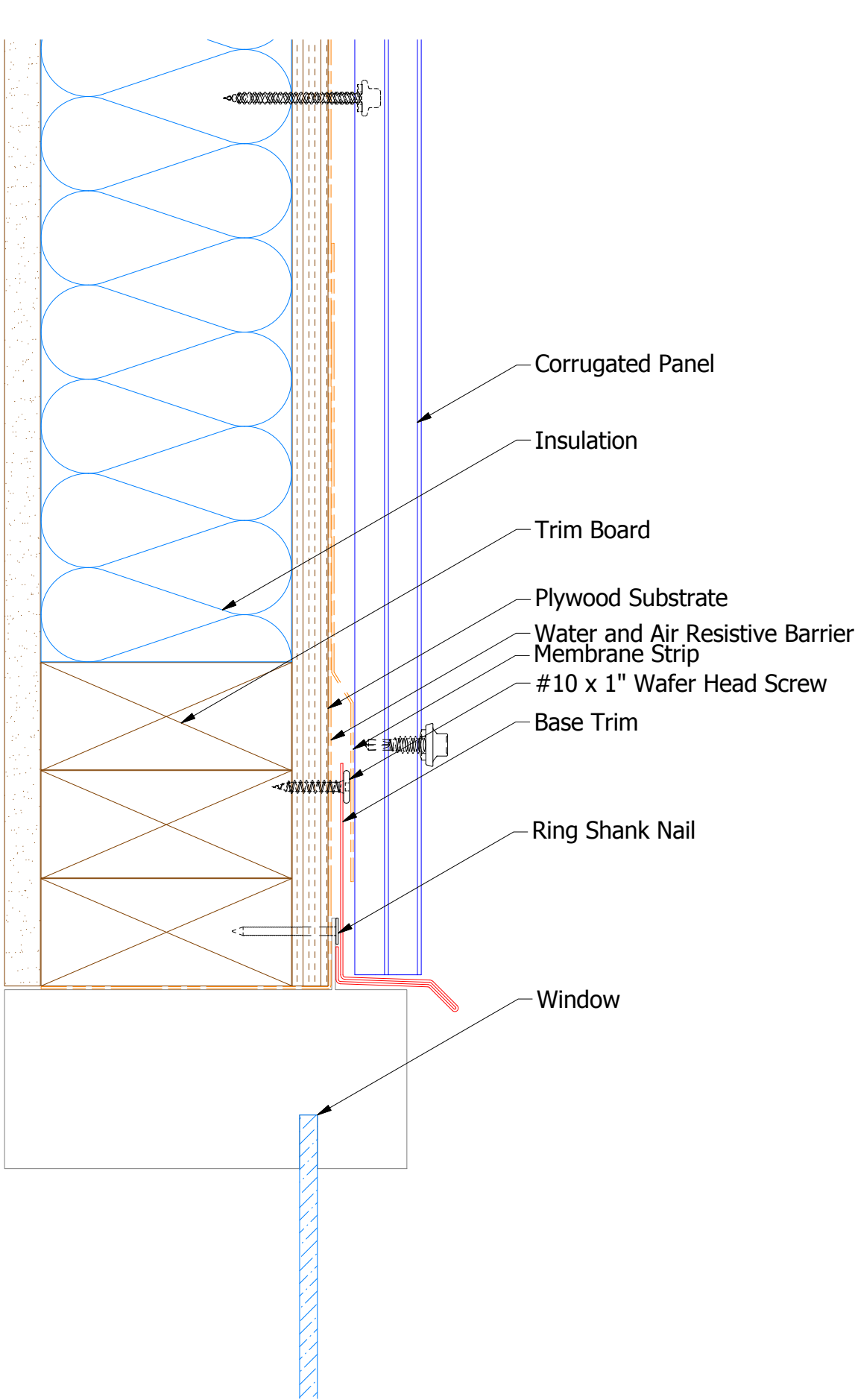


ATAS INTERNATIONAL, INC
Allentown PA
610-395-8445
Mesa AZ
480-558-7210

TITLE			
Belvedere Corrugated Top of Wall Detail			
DWG. NO.		DR	DATE
		KRK	5/8/2015
MATERIAL		APP	DATE
		DAS	7/29/16
SH. SIZE		SCALE	
B		X:X	

REV. NO.	DATE	DESCRIPTION OF REVISION	BY	APP

Vertical Panel



BCA661 - Base Trim

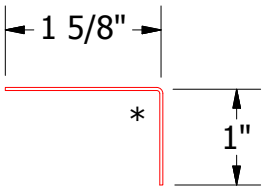
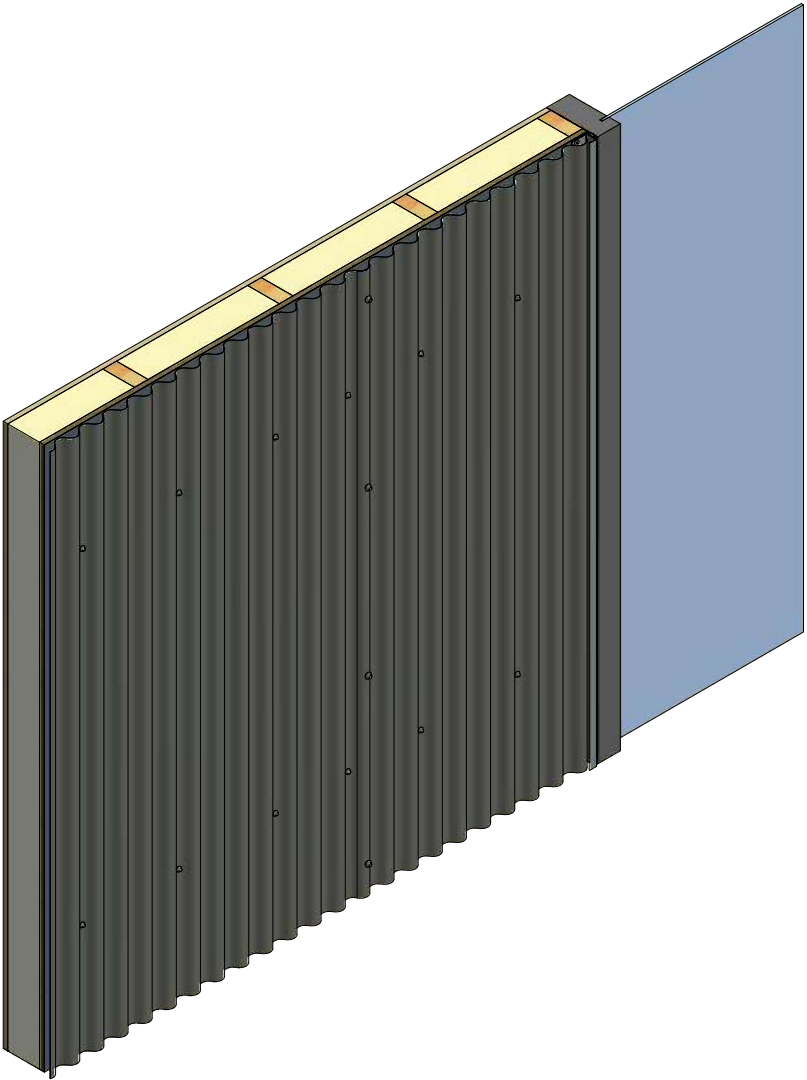
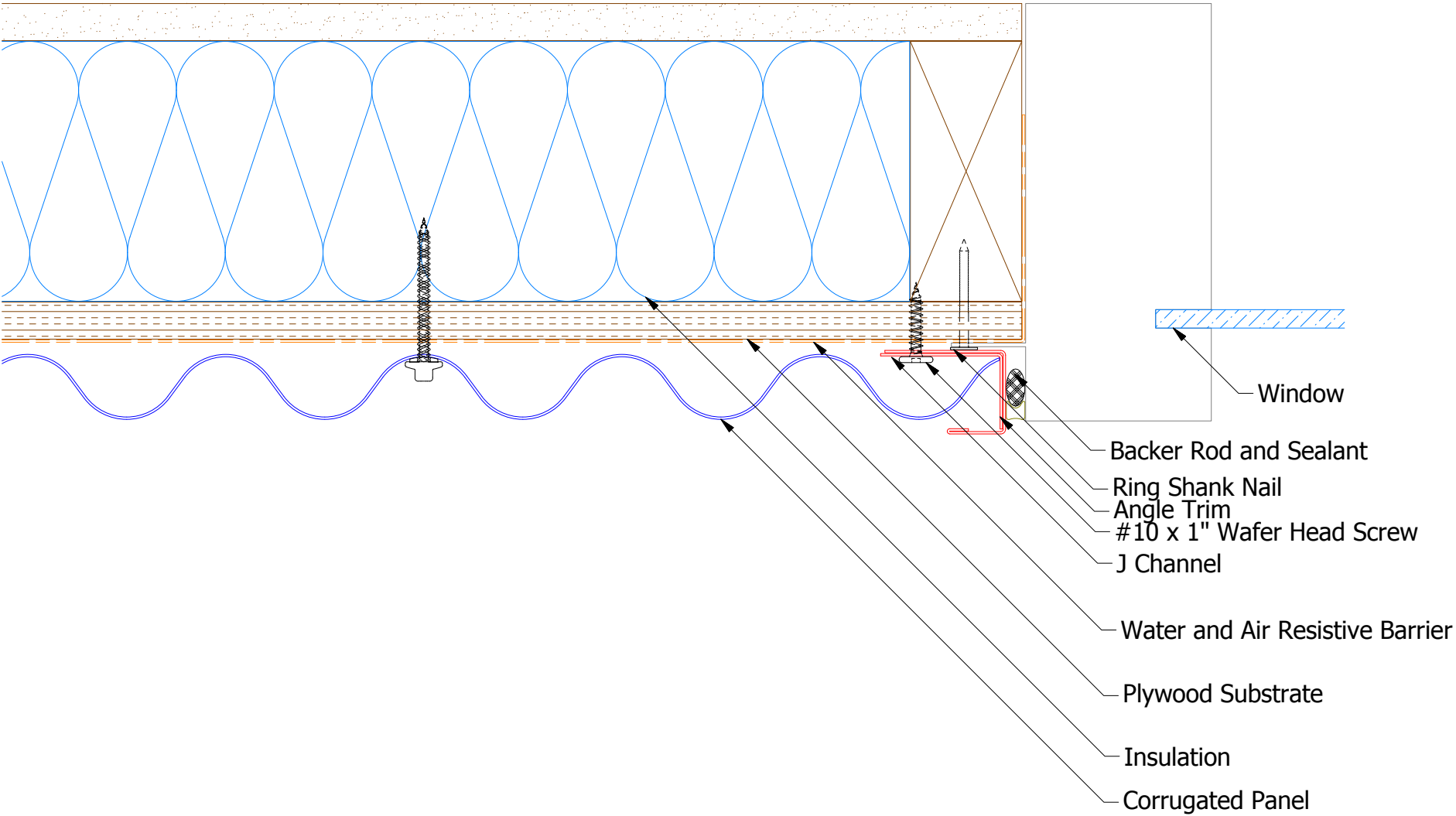


ATAS INTERNATIONAL, INC
Allentown PA
610-395-8445
Mesa AZ
480-558-7210

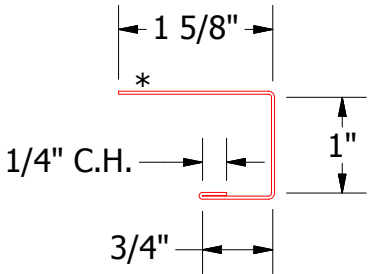
TITLE			
Corra Lok Head Window Flange Detail			
DWG. NO.		DR	DATE
		MBP	7/25/2018
APP		DATE	
MATERIAL		SH. SIZE	SCALE
		B	X:X

REV. NO.	DATE	DESCRIPTION OF REVISION	BY	APP


Vertical Panel



BCA680 - Angle Trim

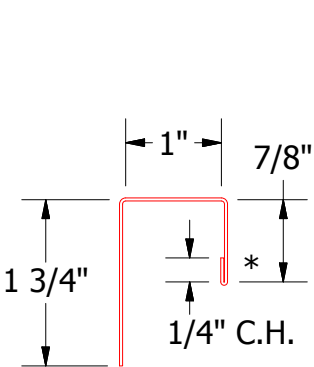
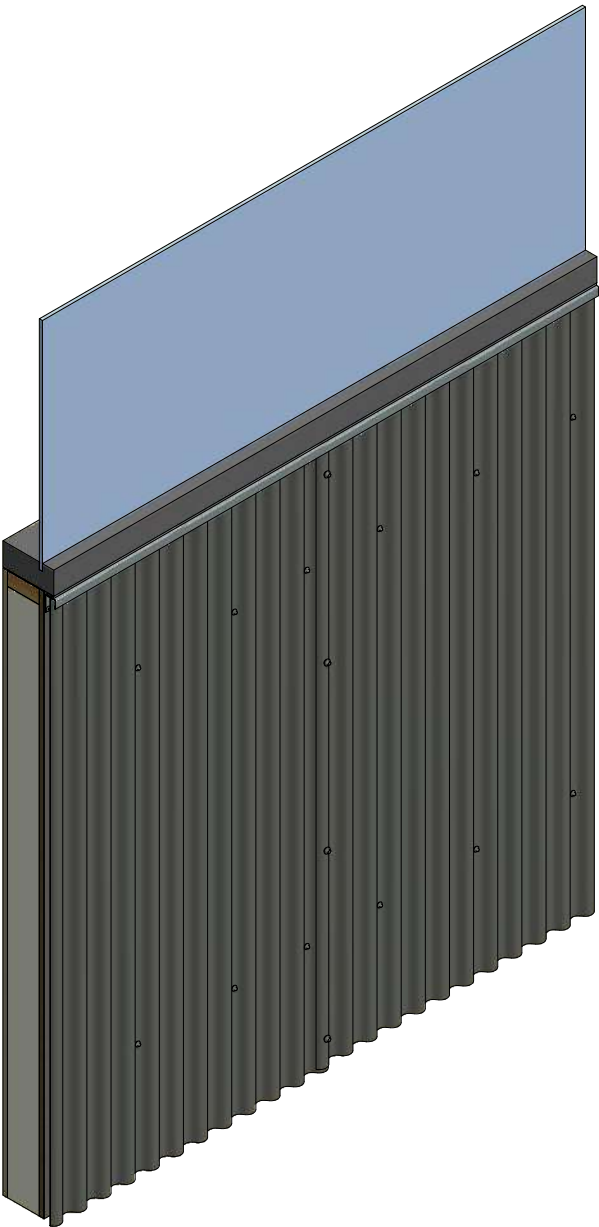
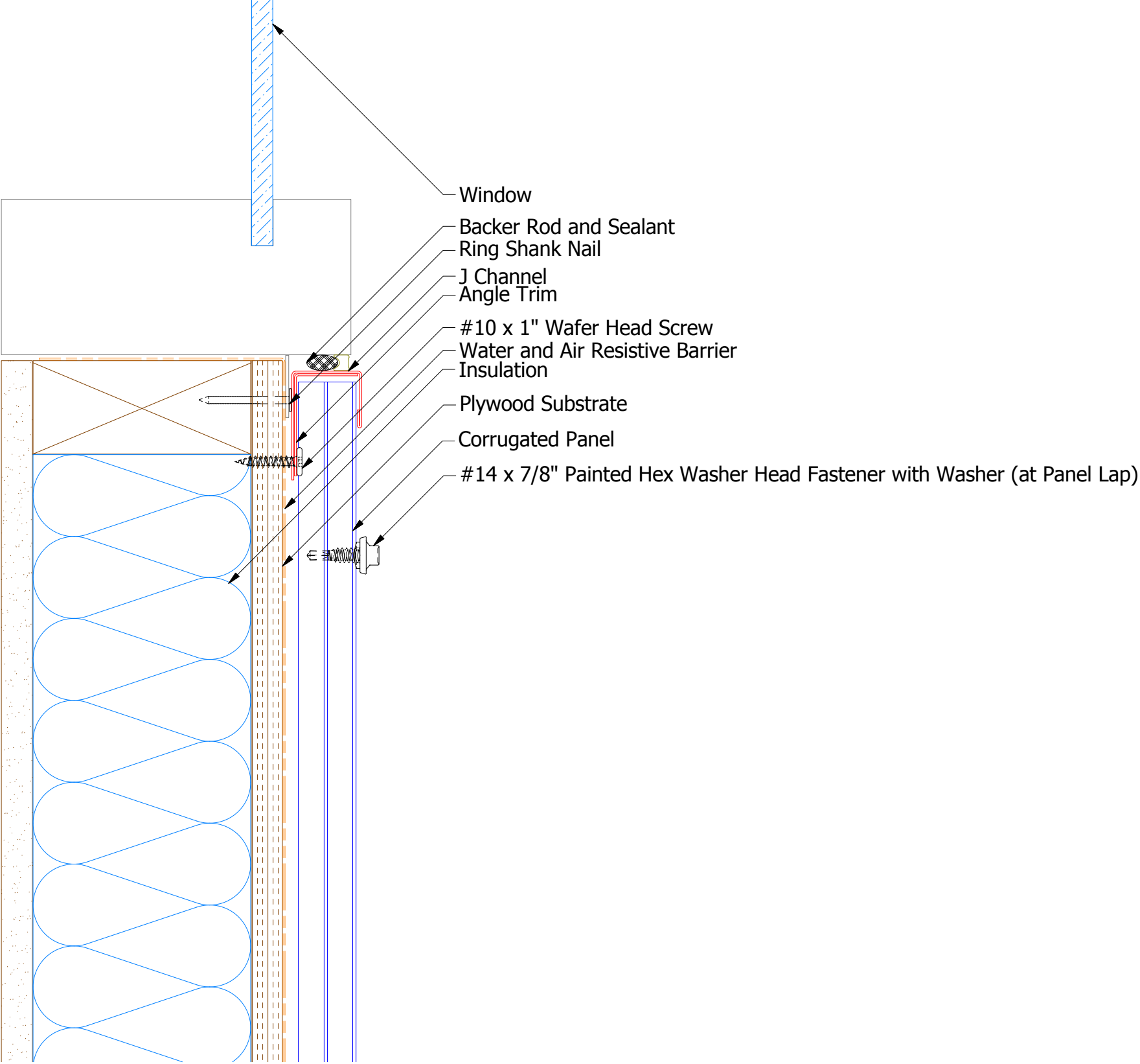


BCA118 - J Channel

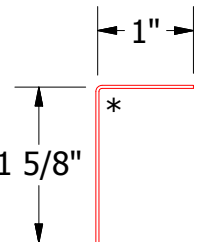
		ATAS INTERNATIONAL, INC	
		Allentown PA 610-395-8445 Mesa AZ 480-558-7210	
TITLE			
Corrugated Jamb Window Flange Detail			
DWG. NO.		DR	DATE
		MBP	7/25/2018
MATERIAL		APP	DATE
		SH. SIZE	SCALE
		B	X:X

REV. NO.	DATE	DESCRIPTION OF REVISION	BY	APP

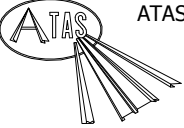
Vertical Panel



BCA118 - J Channel



BCA680 - Angle Trim

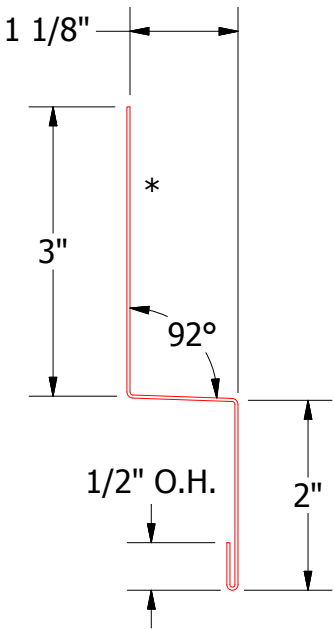
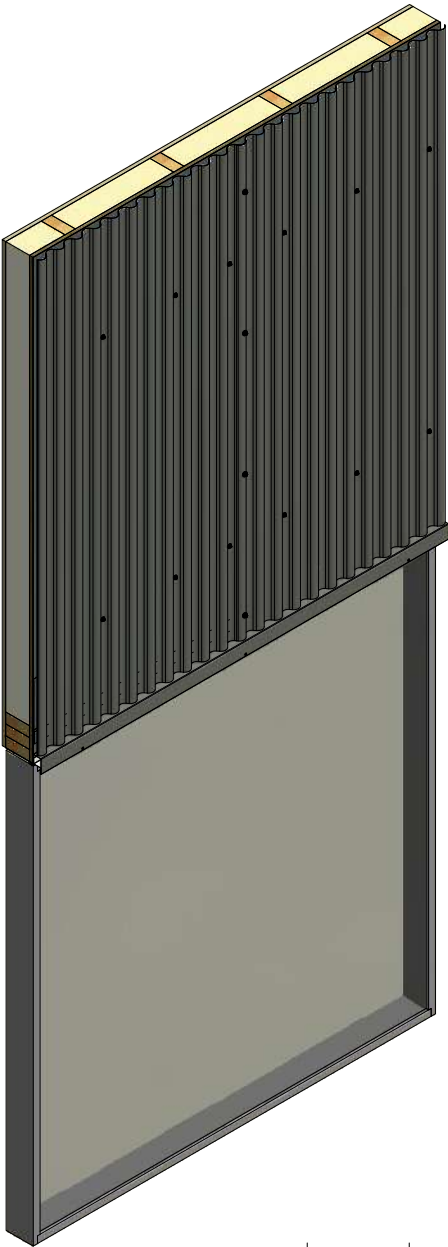
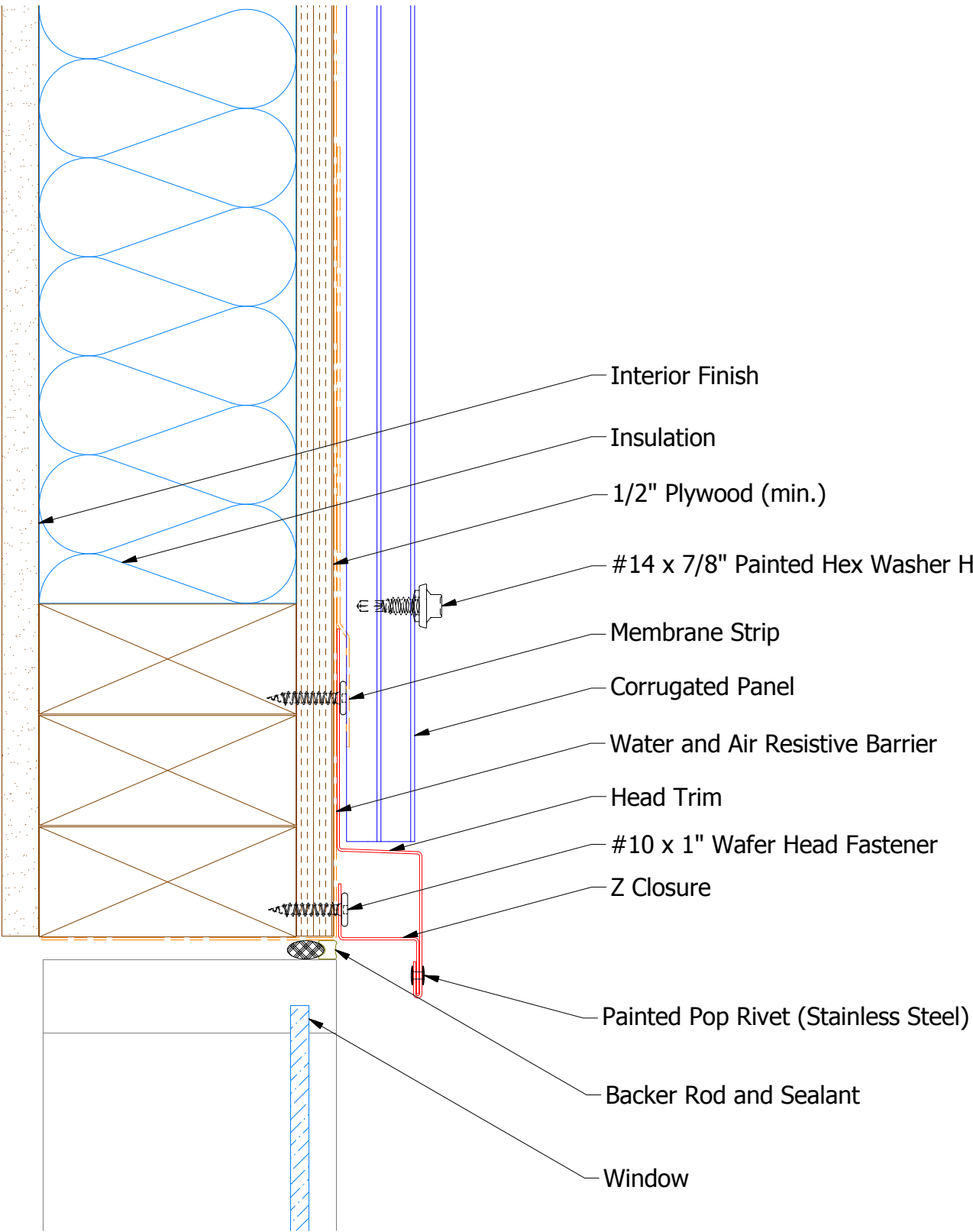


ATAS INTERNATIONAL, INC
Allentown PA
610-395-8445
Mesa AZ
480-558-7210

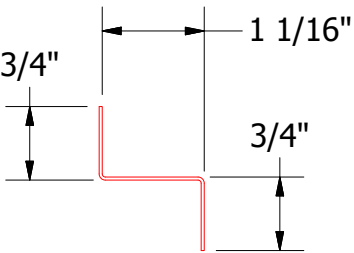
TITLE Corrugated Window Sill Flange Detail			
DWG. NO.		DR MBP	DATE 7/26/2018
MATERIAL		APP	DATE
REV. NO.	DATE	DESCRIPTION OF REVISION	BY APP
SH. SIZE B		SCALE X:X	

REV. NO.	DATE	DESCRIPTION OF REVISION	BY	APP

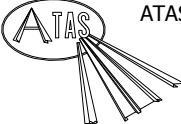
Vertical Panel



Head Trim



Z Closure

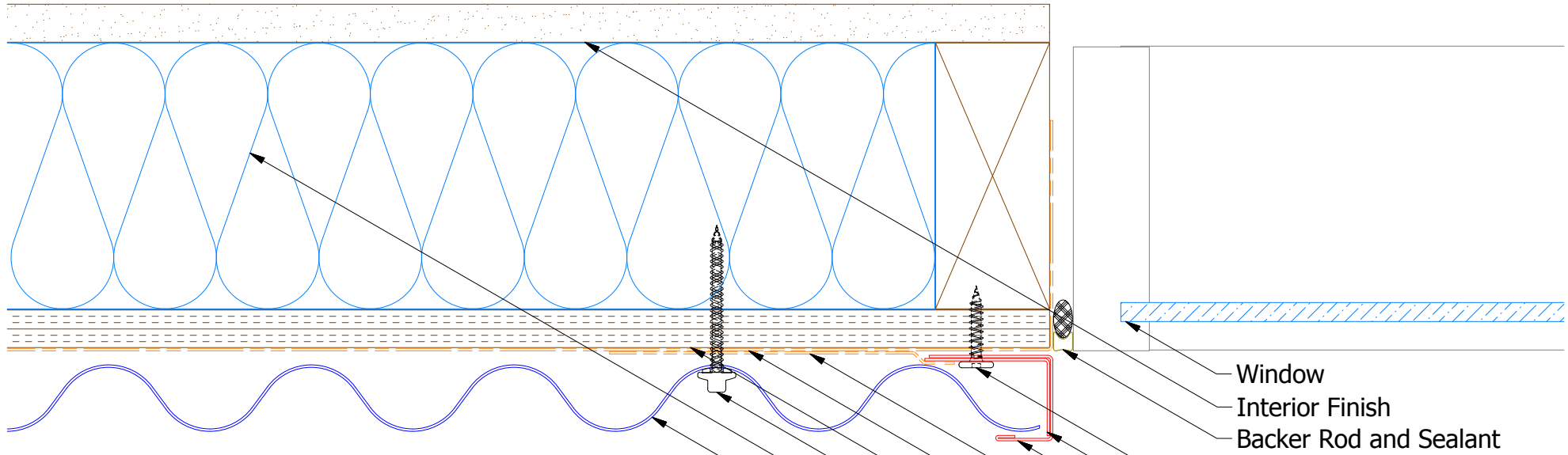


ATAS INTERNATIONAL, INC
Allentown PA
610-395-8445
Mesa AZ
480-558-7210

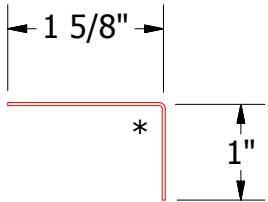
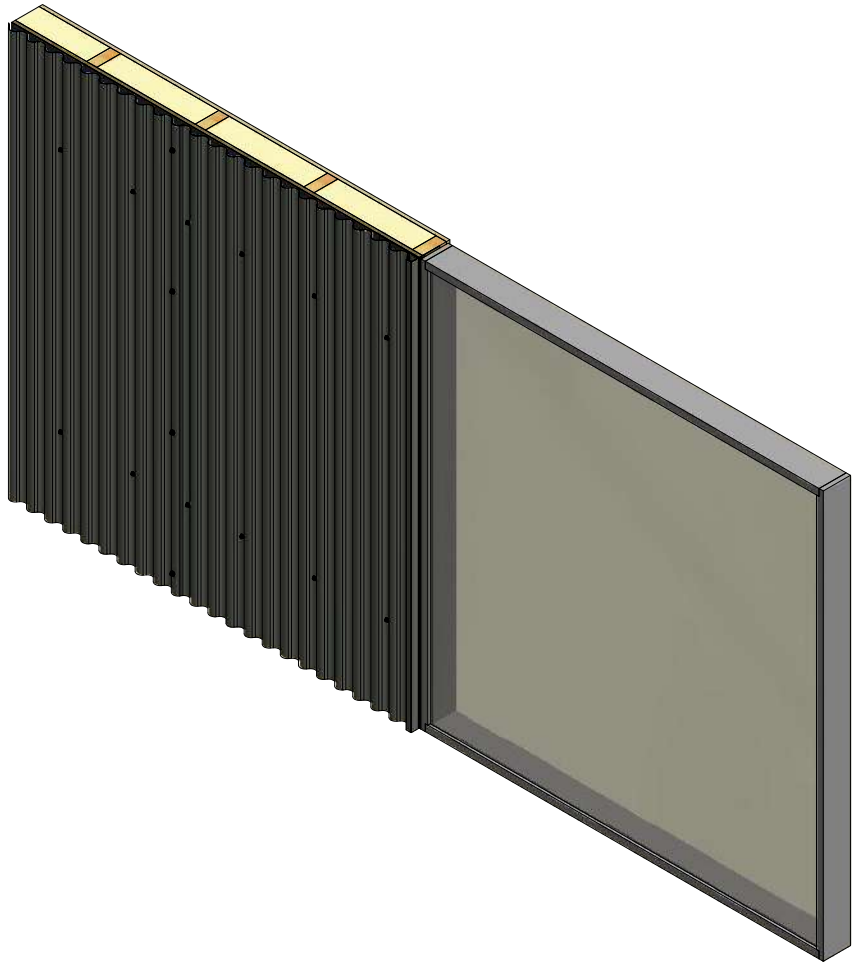
TITLE Corrugated Existing Head Detail			
DWG. NO.		DR DMR	DATE 7/10/2018
APP		DATE	
MATERIAL		SH. SIZE B	SCALE X:X

REV. NO.	DATE	DESCRIPTION OF REVISION	BY	APP

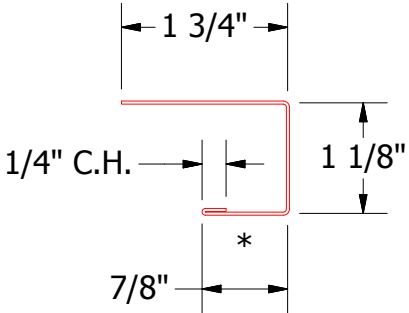
Vertical Panel



- Window
- Interior Finish
- Backer Rod and Sealant
- #10 x 1" Wafer Head Fastener
- Angle Trim
- J Channel
- Membrane Strip
- Water and Air Resistive Barrier
- 1/2" Plywood (min.)
- #10 x 2" Painted Hex Washer Head Fastener
- Insulation
- Corrugated Panel



BCA680 - Angle Trim



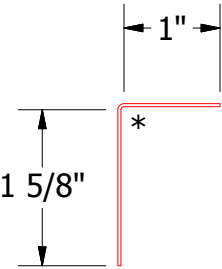
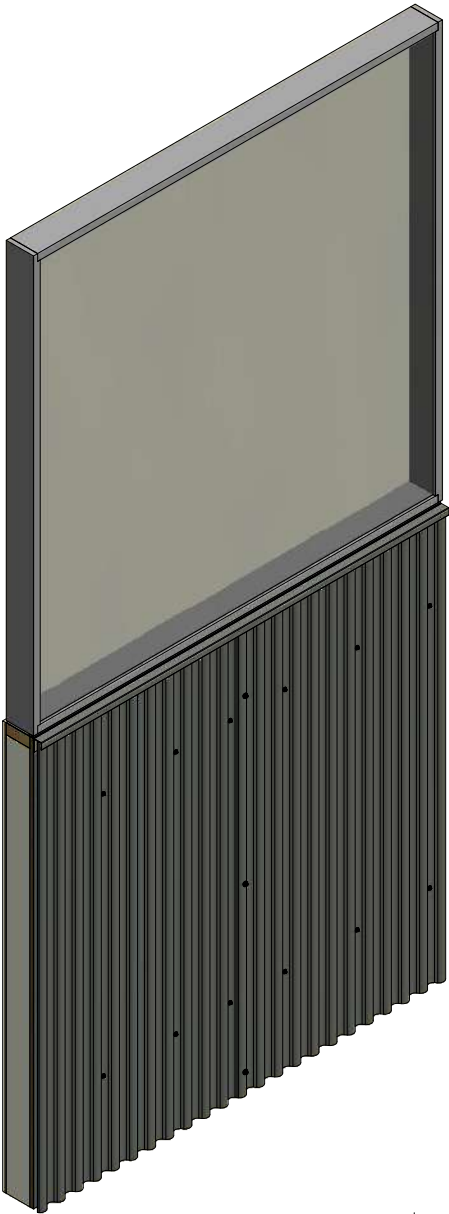
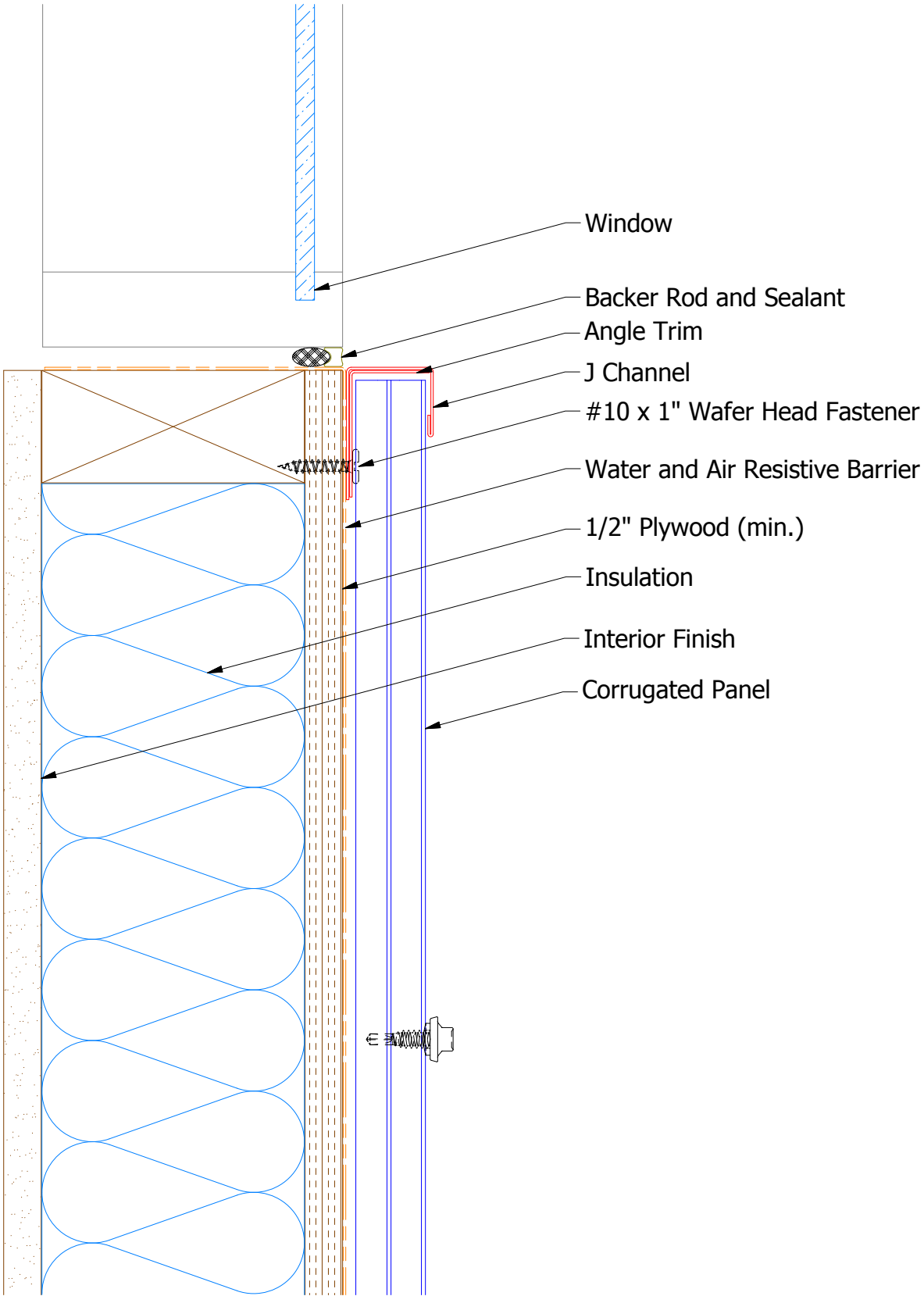
BCA118 - J Channel

				TITLE			
				Corrugated Existing Jamb Detail			
				DWG. NO.		DR	DATE
						DMR	7/11/2018
						APP	DATE
				MATERIAL		SH. SIZE	SCALE
						B	X:X
REV. NO.	DATE	DESCRIPTION OF REVISION		BY	APP		

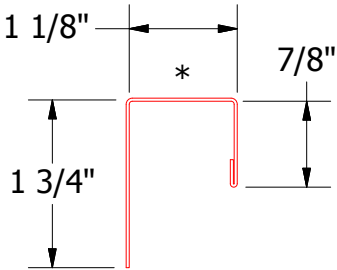


ATAS INTERNATIONAL, INC
Allentown PA
610-395-8445
Mesa AZ
480-558-7210

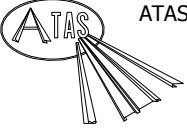
Vertical Panel



BCA680 - Angle Trim



BCA118 - J Channel

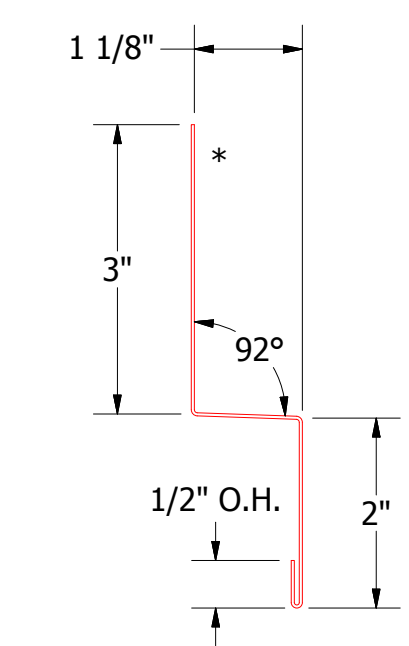
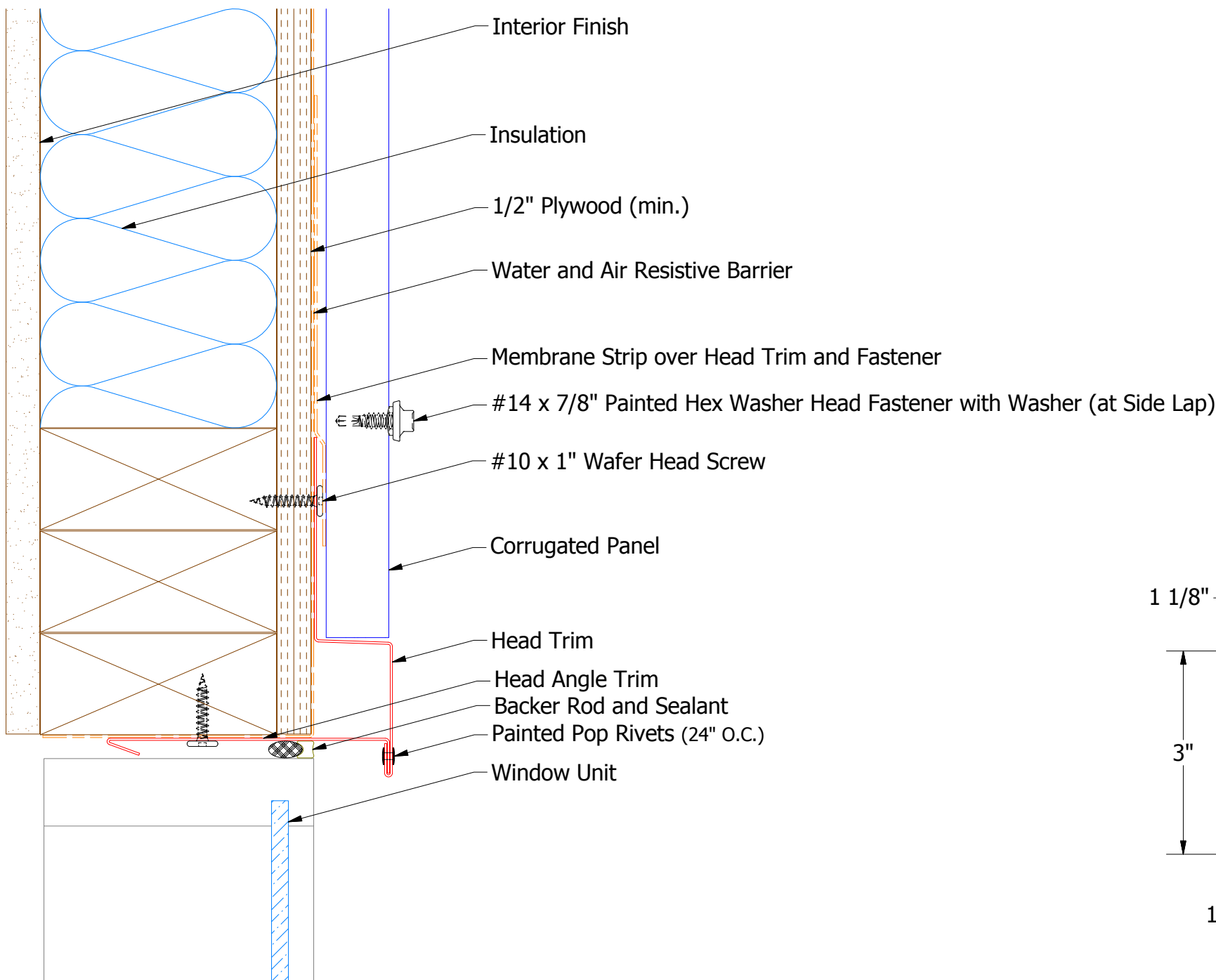


ATAS INTERNATIONAL, INC
Allentown PA
610-395-8445
Mesa AZ
480-558-7210

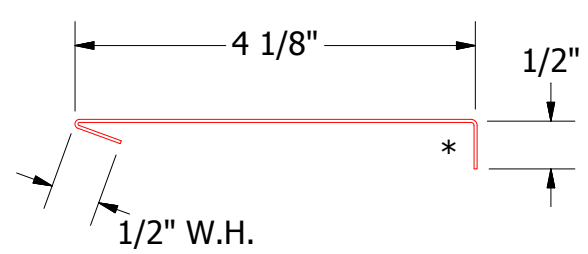
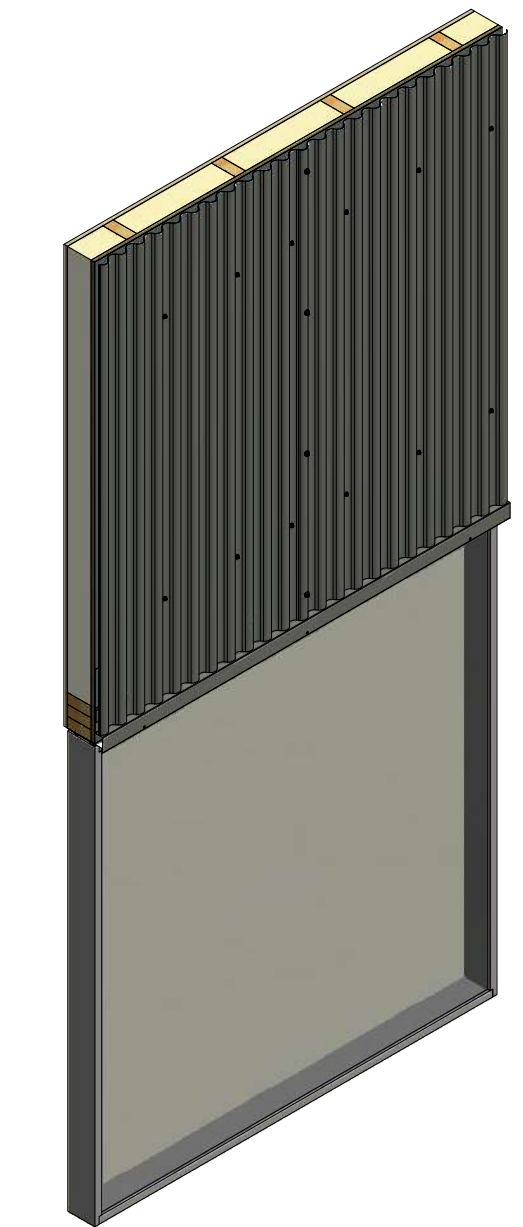
TITLE			
Corrugated Existing Window Sill Detail			
DWG. NO.		DR	DATE
		DMR	7/12/2018
APP		DATE	
MATERIAL		SH. SIZE	SCALE
		B	X:X

REV. NO.	DATE	DESCRIPTION OF REVISION	BY	APP

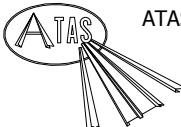
Vertical Panel



BCA550 - Head Trim



BCA690 - Head Angle Trim

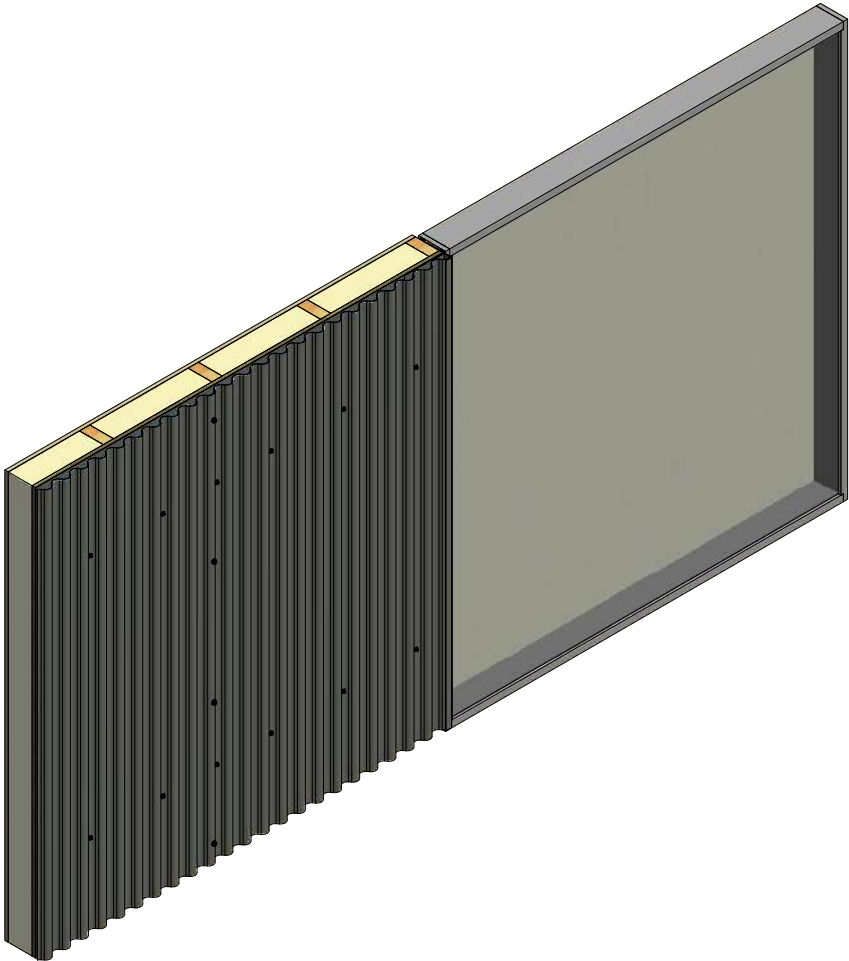
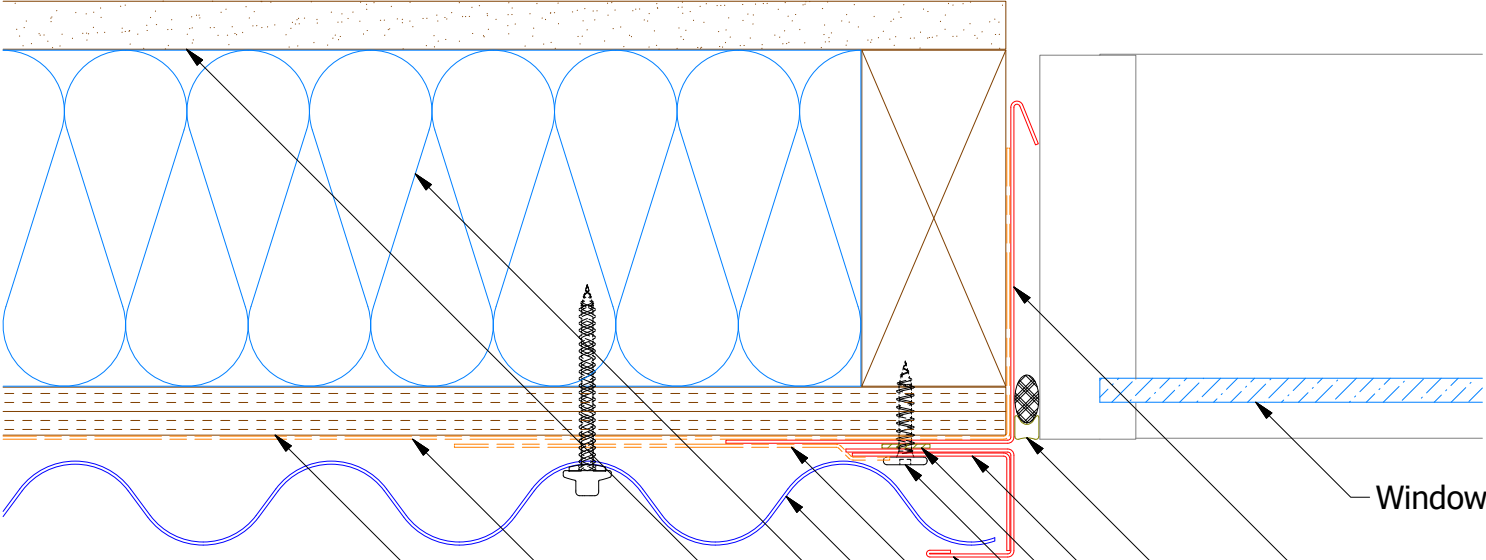


ATAS INTERNATIONAL, INC
Allentown PA
610-395-8445
Mesa AZ
480-558-7210

TITLE Belvedere Corrugated Head Detail			
DWG. NO.		DR KRK	DATE 5/8/2015
MATERIAL		APP DAS	DATE 7/29/16
REV. NO.		SH. SIZE B	SCALE X:X

REV. NO.	DATE	DESCRIPTION OF REVISION	BY	APP

Vertical Panel



Window Unit

Angle Trim With Return

Backer Rod and Sealant

Angle Trim

Butyl Tape

#10 x 1" Wafer Head Screw

J Channel

Membrane Strip over J Channel and Angle Trim

Corrugated Panel

Insulation

Interior Finish

Water and Air Resistive Barrier

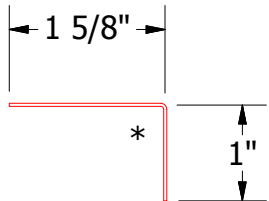
1/2" Plywood (min.)

1/2" W.H.

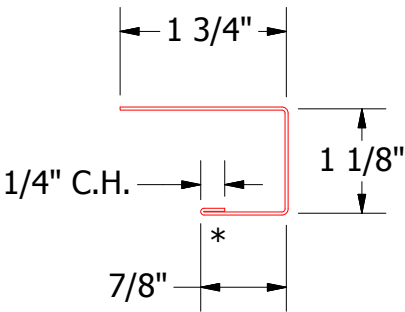
3 1/2"

3"

BCA683 - Angle Trim With Return



BCA680-Angle Trim



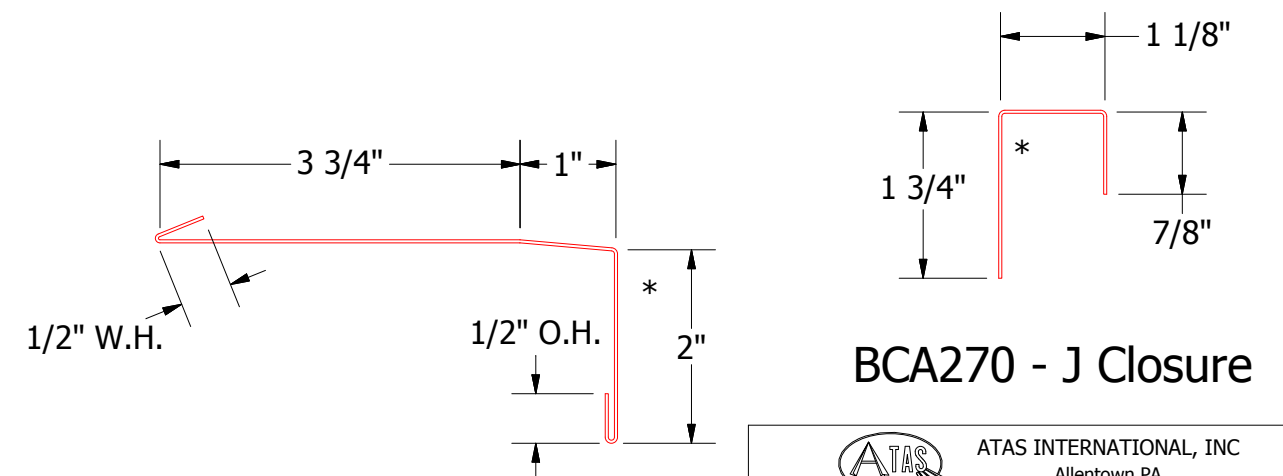
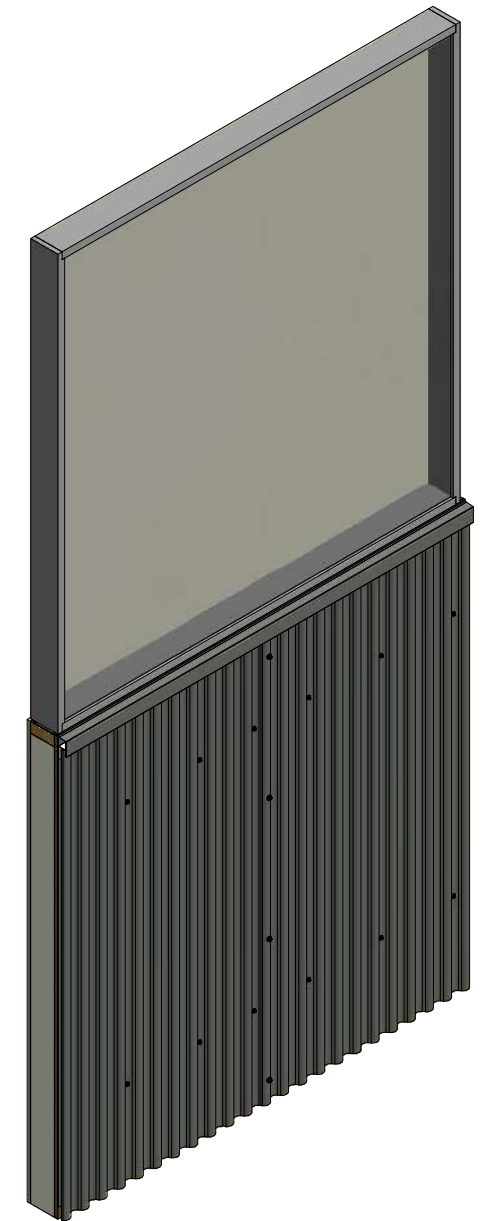
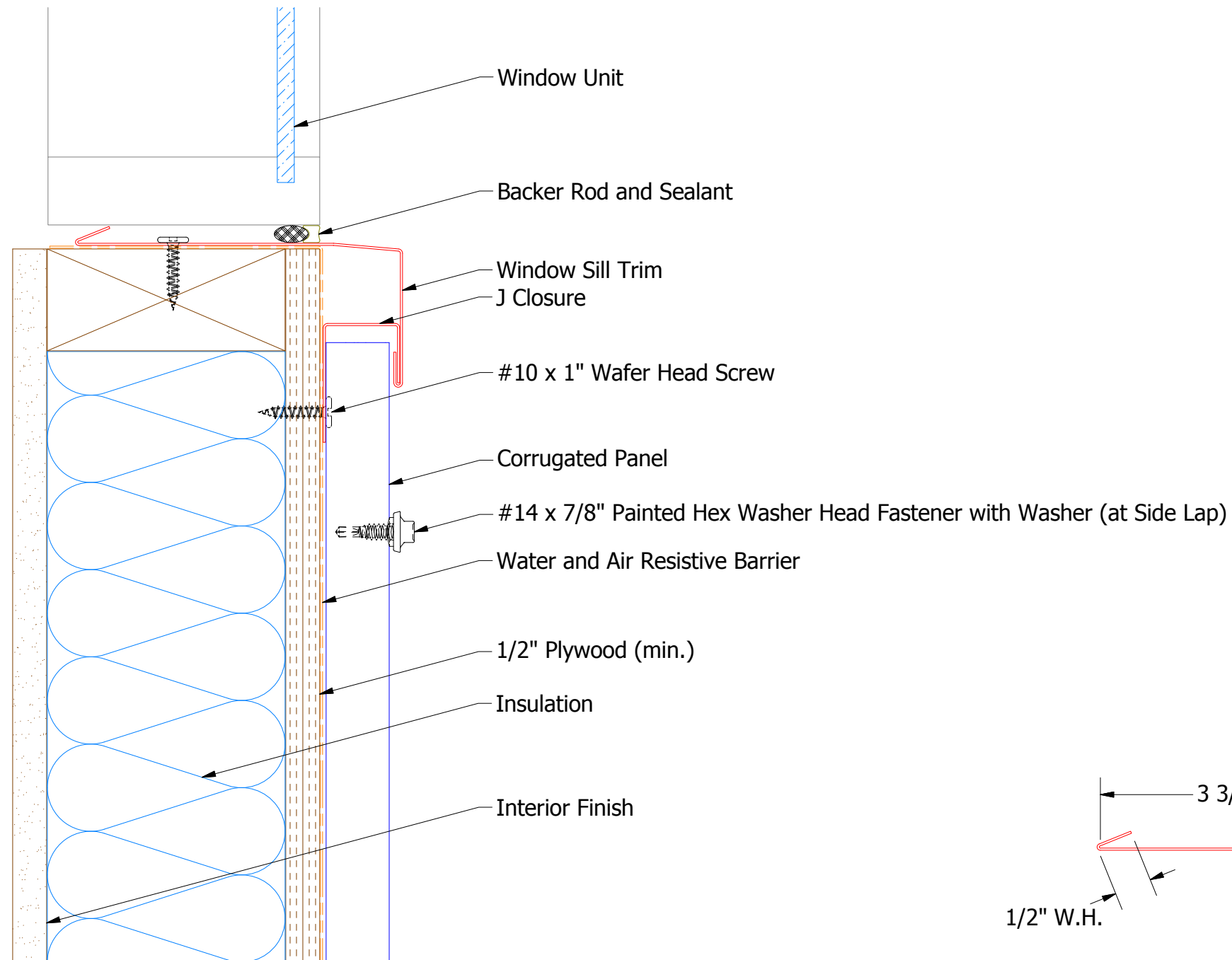
BCA118-J Channel

ATAS
ATAS INTERNATIONAL, INC
Allentown PA
610-395-8445
Mesa AZ
480-558-7210

REV. NO.				DATE				DESCRIPTION OF REVISION				BY				APP			
1				5/8/2015															
2				7/29/16															
3																			
4																			
5																			
6																			
7																			
8																			
9																			
10																			

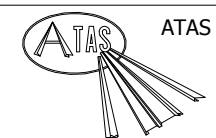
TITLE				Belvedere Corrugated Jamb Detail			
DWG. NO.				DR KRK DATE 5/8/2015			
MATERIAL				APP DAS DATE 7/29/16			
SH. SIZE				SCALE X:X			

Vertical Panel



BCA670 - Window Sill Trim

BCA270 - J Closure



ATAS INTERNATIONAL, INC
Allentown PA
610-395-8445
Mesa AZ
480-558-7210

					TITLE Belvedere Corrugated Window Sill Detail				
					DWG. NO.			DR KRK	DATE 5/11/2015
					MATERIAL			APP DAS	DATE 7/29/16
REV. NO.	DATE	DESCRIPTION OF REVISION	BY	APP				SH. SIZE B	SCALE X:X