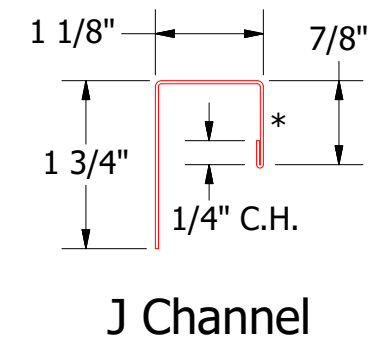
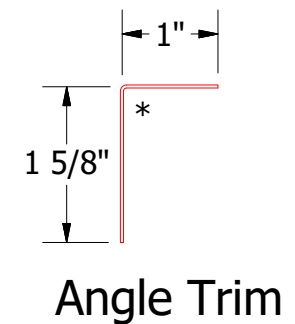
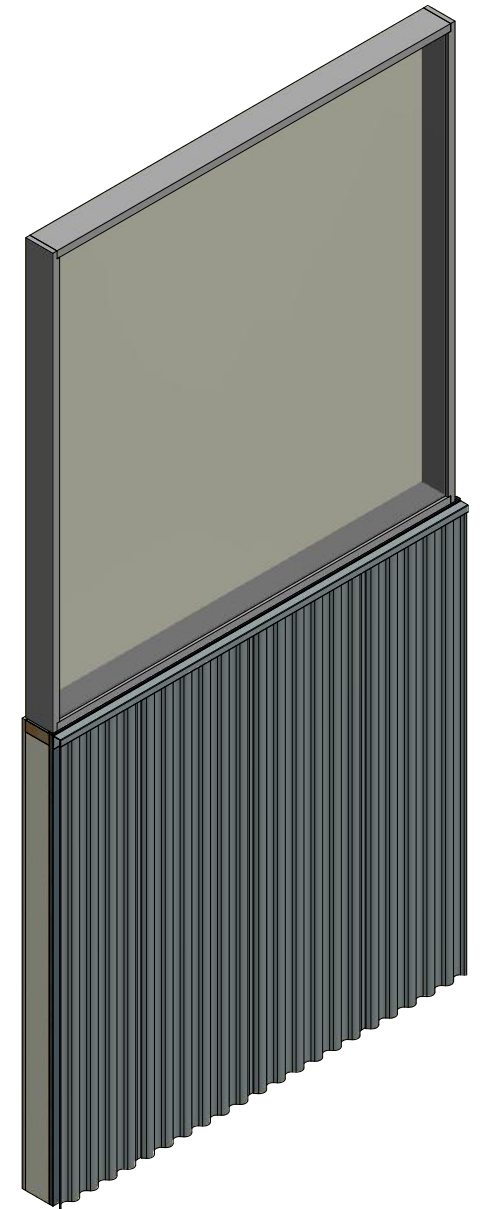
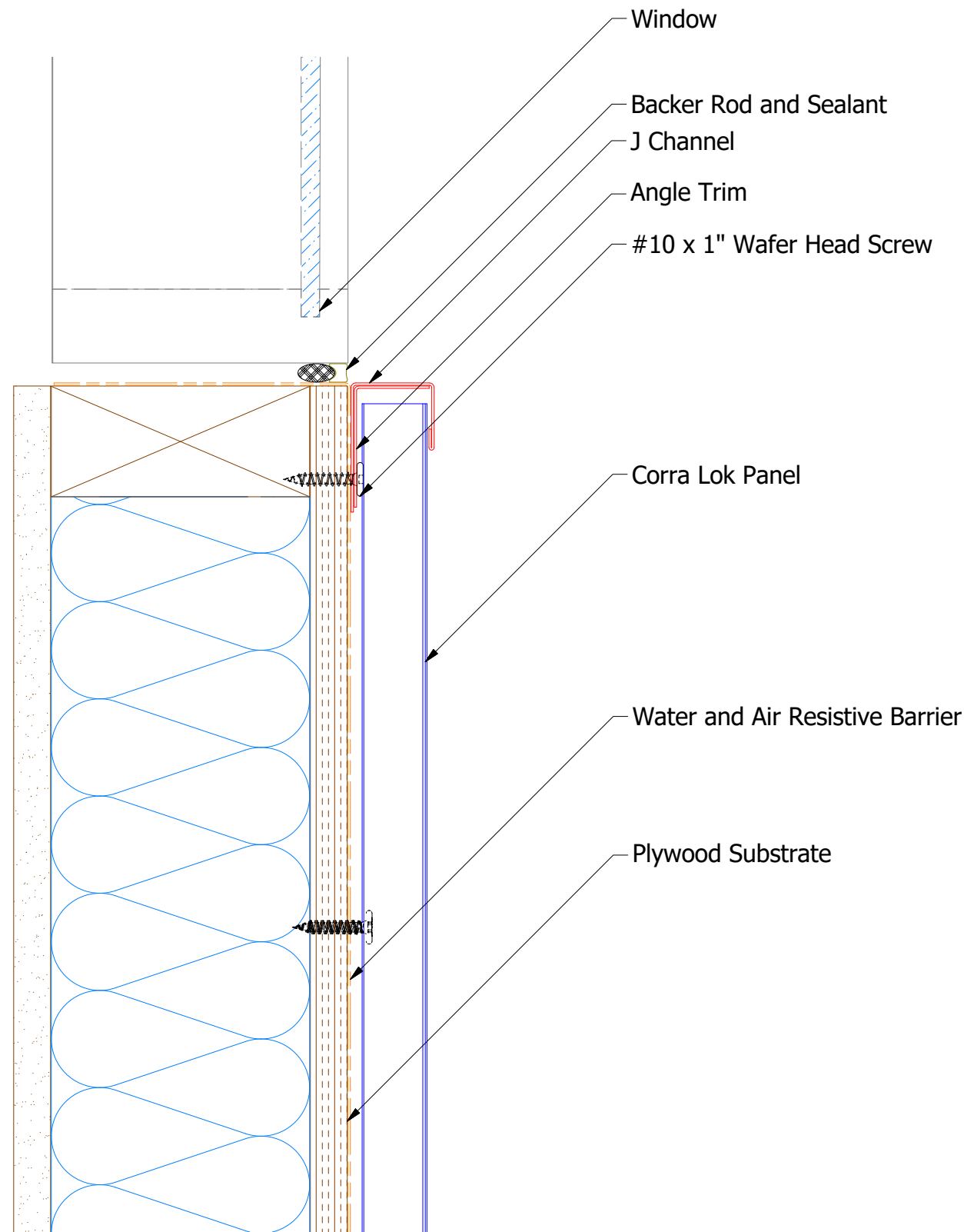


Vertical Panel



Note: * denotes color side.

ATAS ATAS INTERNATIONAL, INC
 Allentown PA
 610-395-8445
 Mesa AZ
 480-558-7210

TITLE Corra Lok Window Sill Existing Window Vertical

DWG. NO.	DR MBP	DATE 7/10/2018
1	APP	DATE
REV. NO.	DATE	DESCRIPTION OF REVISION
	BY DMR	APP
	SH. SIZE B	SCALE X:X

1	2/26/20	Replaced Support Z with Corra-Lok Profiled Support Z	DMR	
REV. NO.	DATE	DESCRIPTION OF REVISION	BY	APP