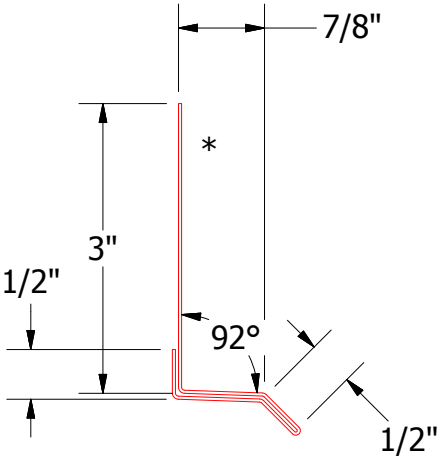
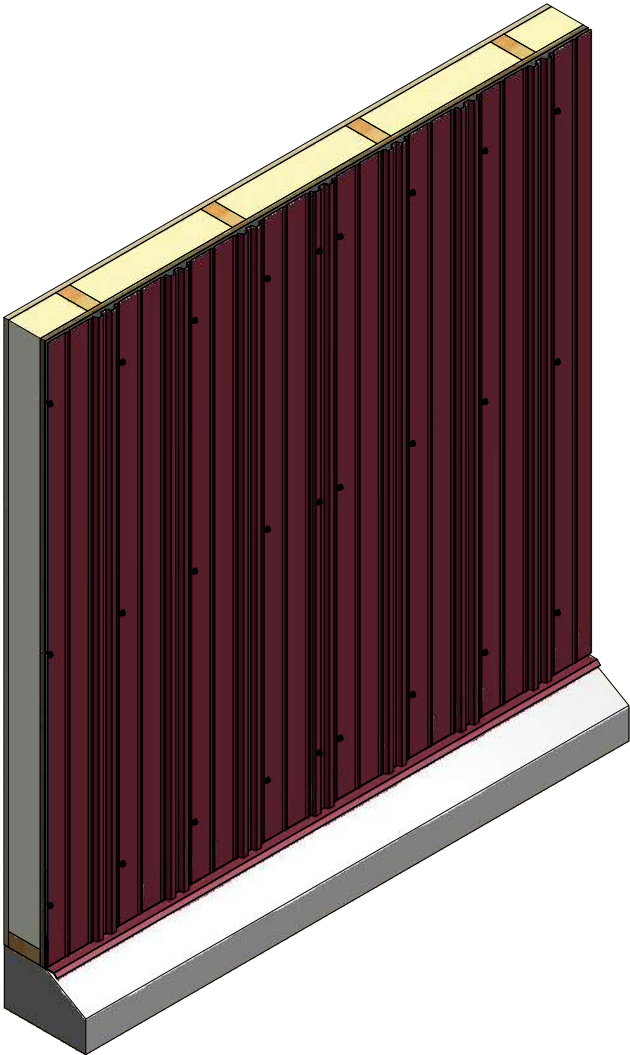
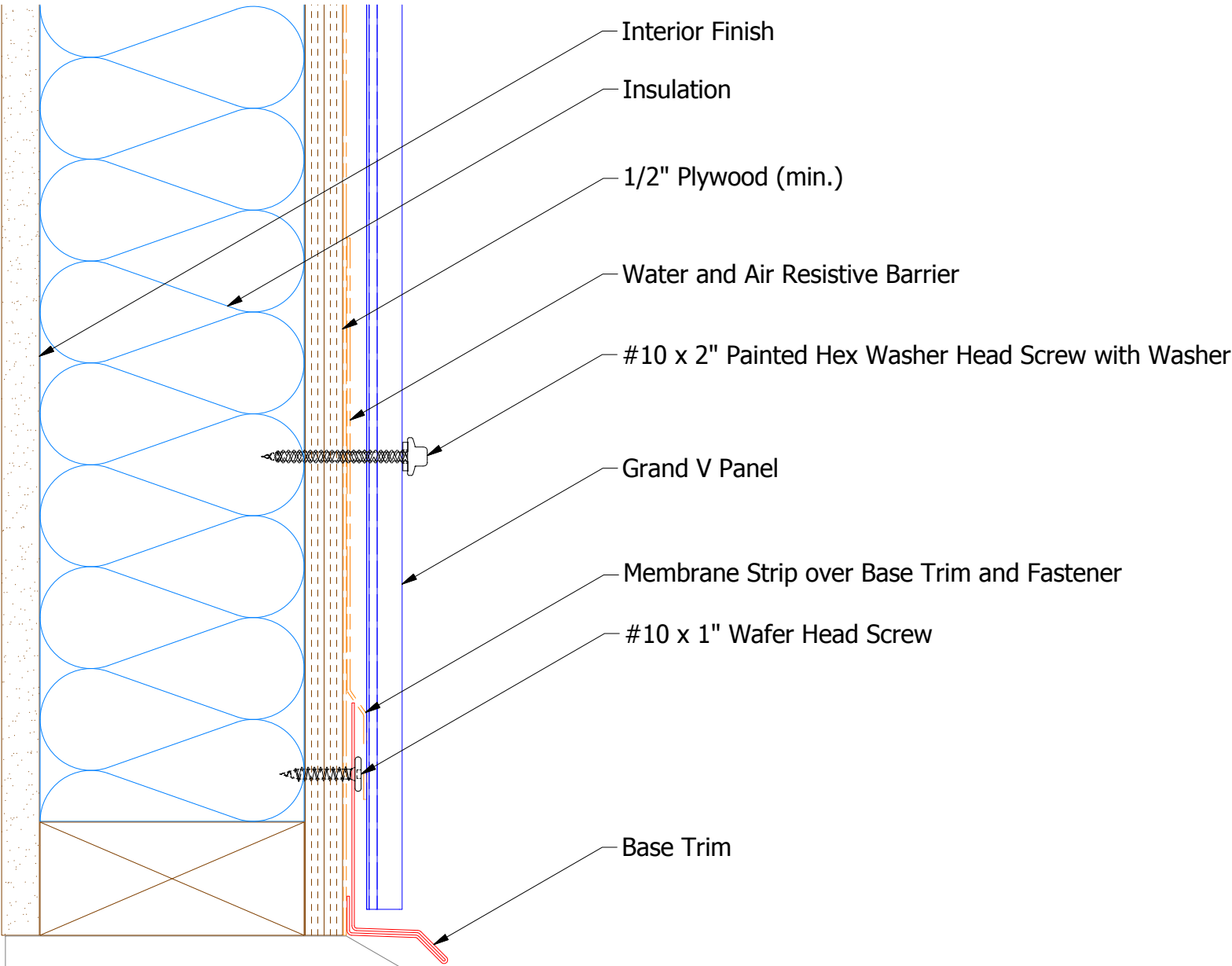


ATAS INTERNATIONAL, INC  
Allentown PA  
610-395-8445  
Mesa AZ  
480-558-7210

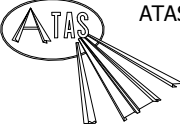
TITLE			
Grand V Panel Detail			
DWG. NO.		DR	DATE
		DMR	6/15/2016
		APP	DATE
		DAS	8/11/16
MATERIAL		SH. SIZE	SCALE
		B	X:X

REV. NO.	DATE	DESCRIPTION OF REVISION	BY	APP

Vertical Panel



BGA661 - Base Trim

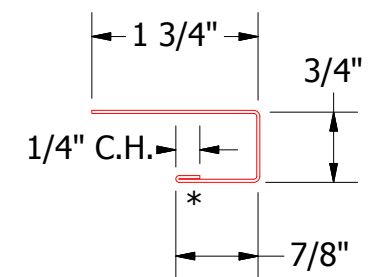
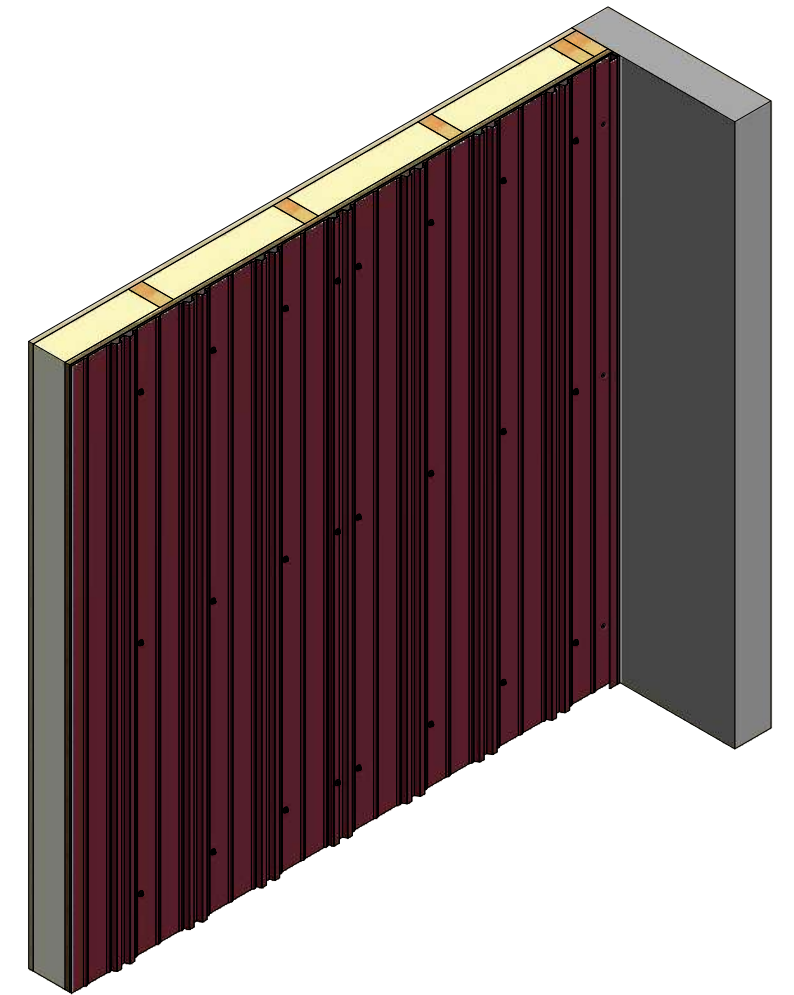
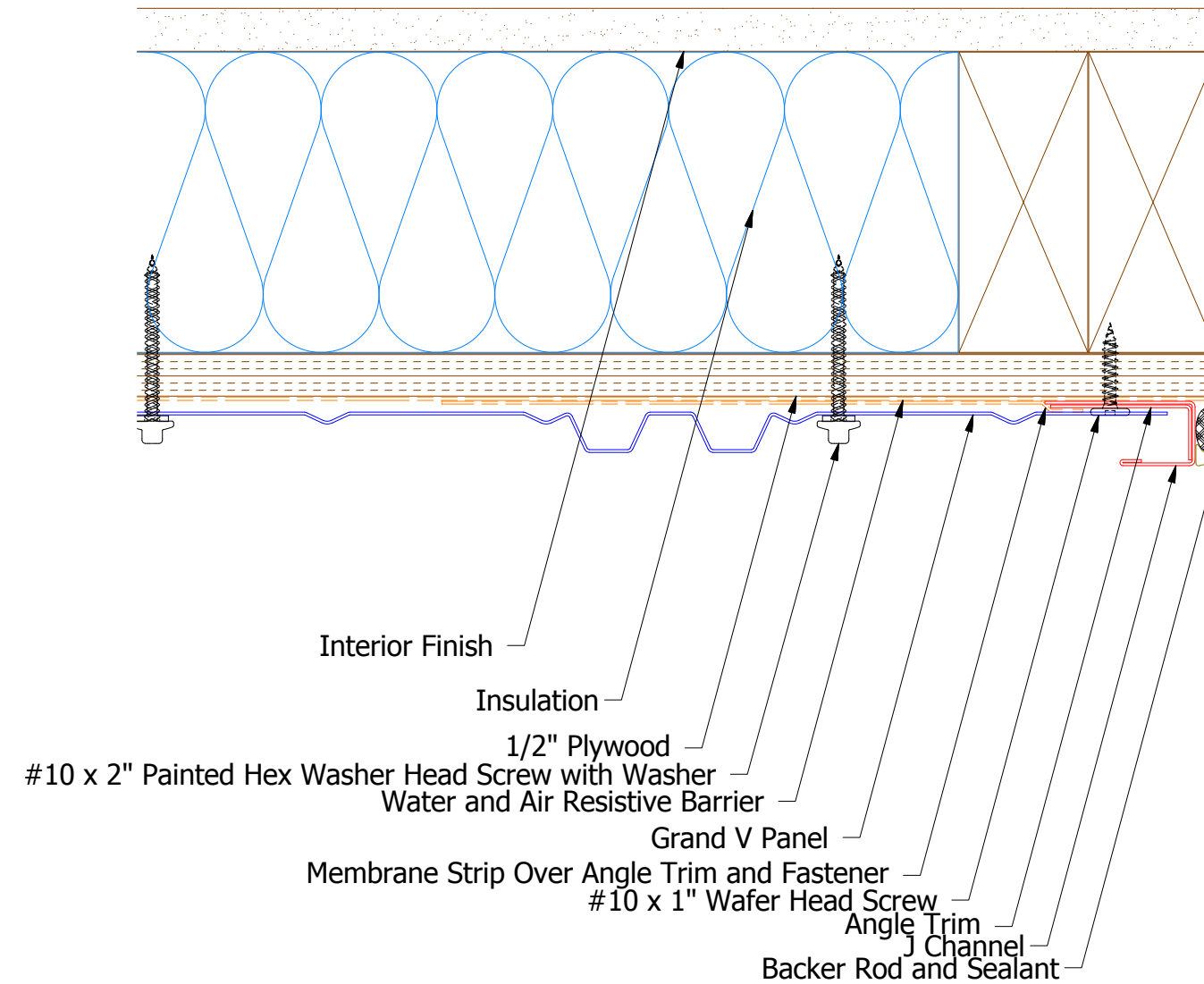


ATAS INTERNATIONAL, INC  
Allentown PA  
610-395-8445  
Mesa AZ  
480-558-7210

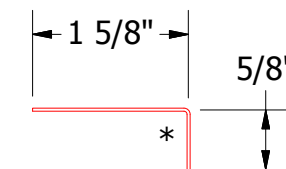
TITLE			
Grand V Base Detail			
DWG. NO.		DR	DATE
		DMR	6/10/2016
MATERIAL		APP	DATE
		DAS	8/8/16
REV. NO.		SH. SIZE	SCALE
		B	X:X

REV. NO.	DATE	DESCRIPTION OF REVISION	BY	APP

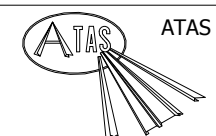
## Vertical Panel



## BGA034 - J Channel



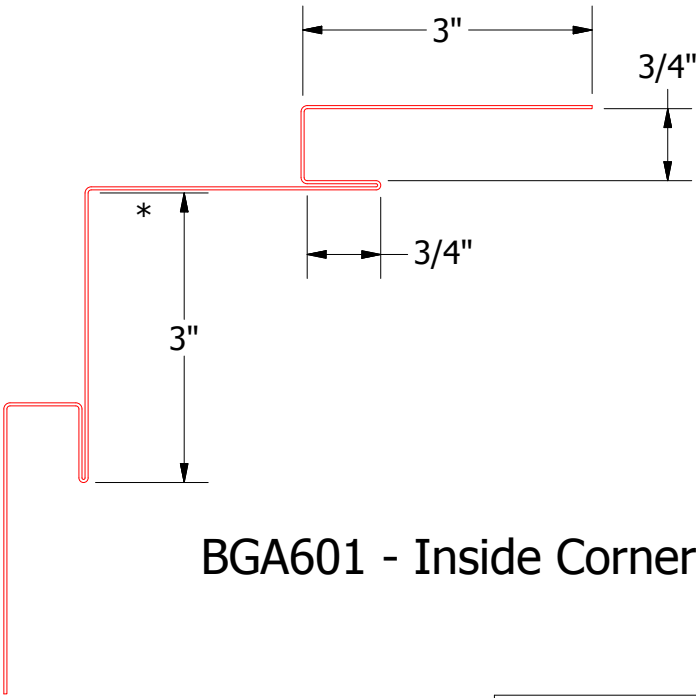
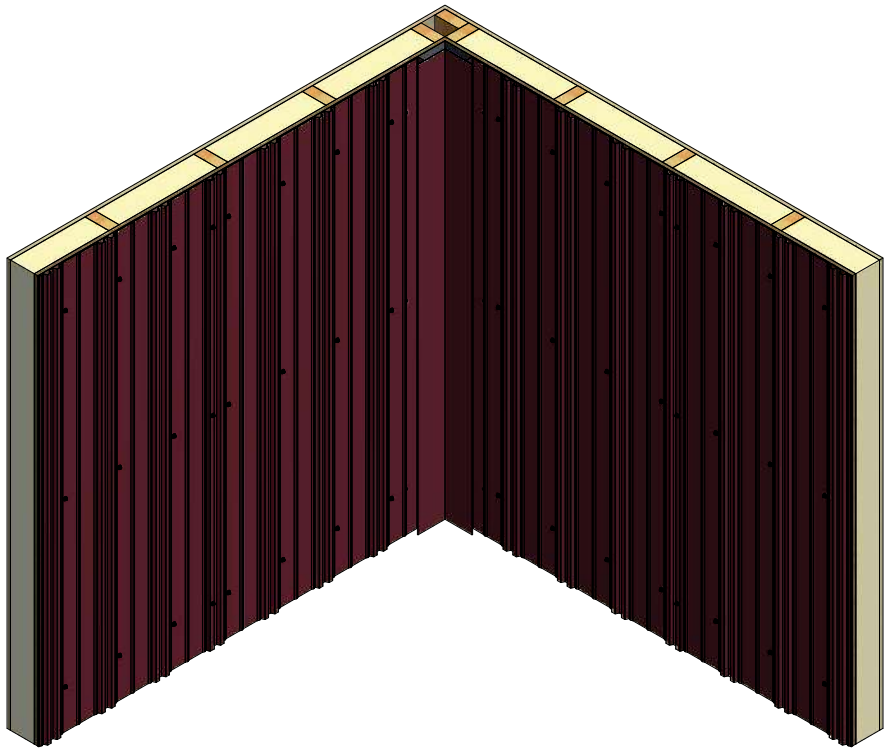
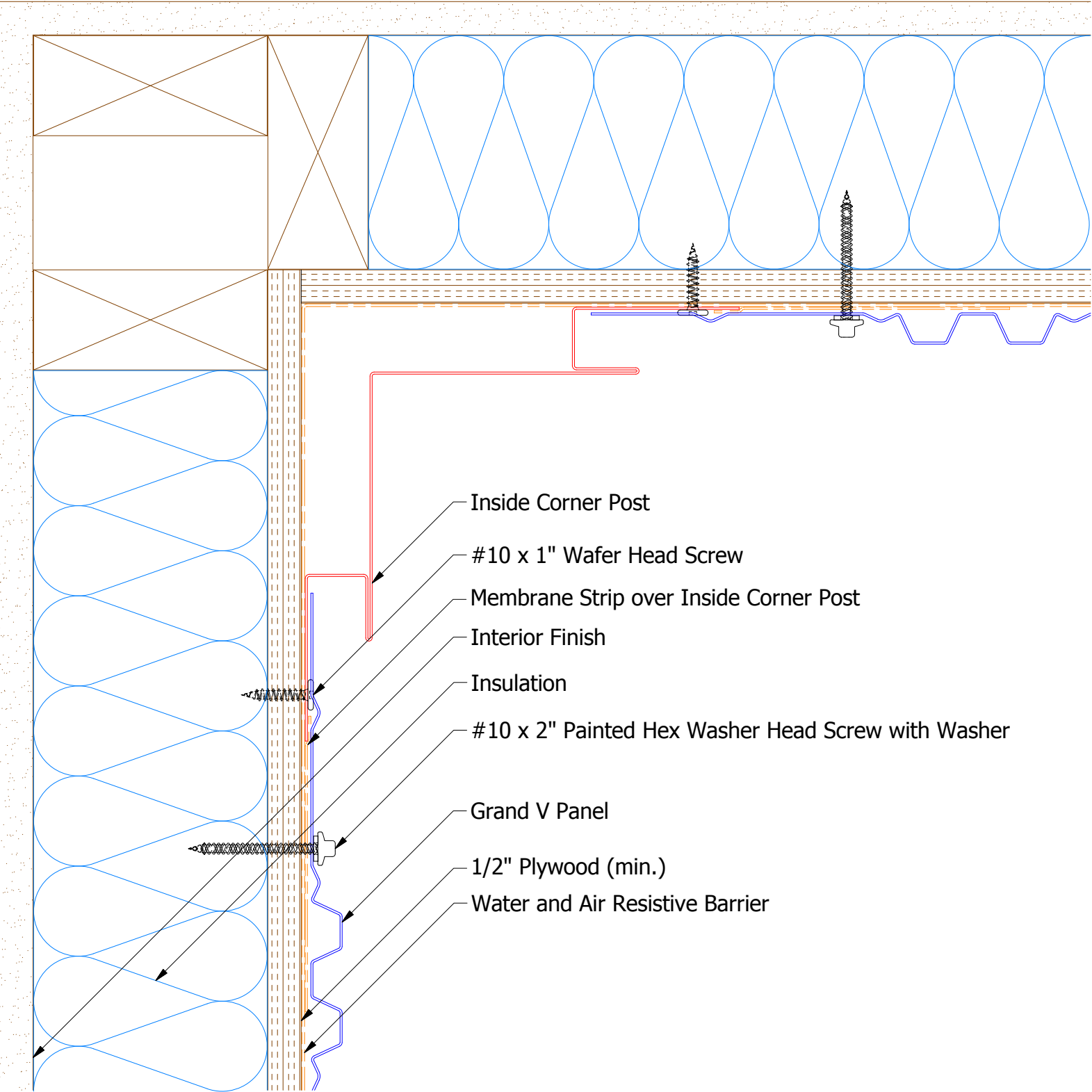
## BGA680 - Angle Trim




**ATAS INTERNATIONAL, INC**  
Allentown PA  
610-395-8445  
Mesa AZ  
480-558-7210

					TITLE		Grand V Endwall Detail	
					DWG. NO.		DR	DATE
							DMR	6/13/2016
					MATERIAL		APP	DATE
REV. NO.	DATE	DESCRIPTION OF REVISION	BY	APP			SH. SIZE	SCALE
							B	X:X

Vertical Panel



BGA601 - Inside Corner Post

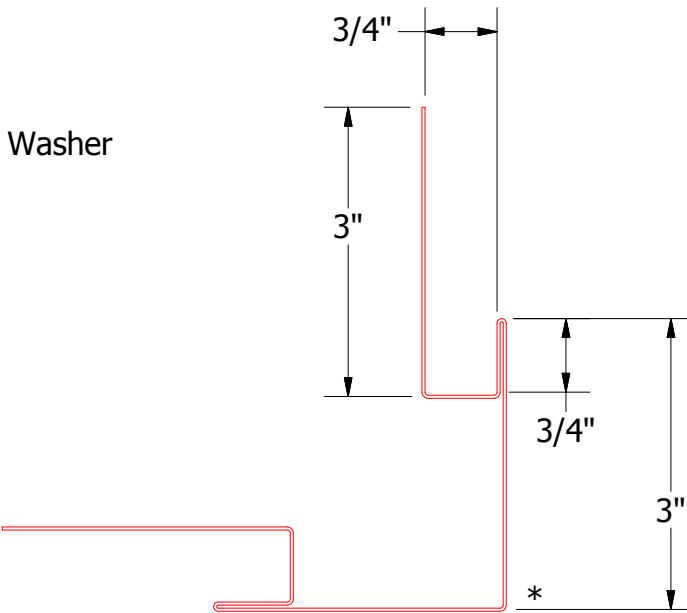
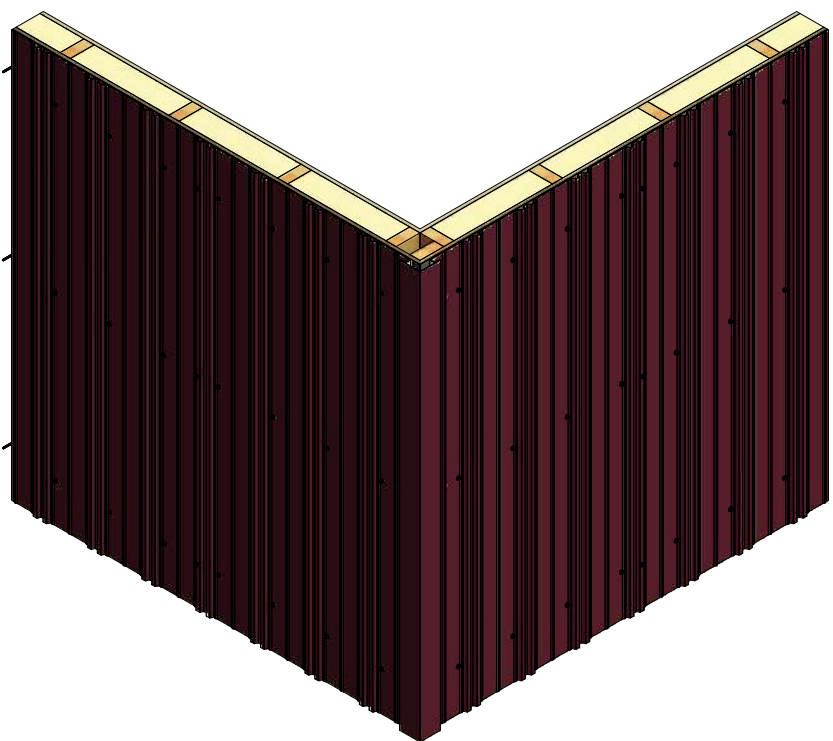
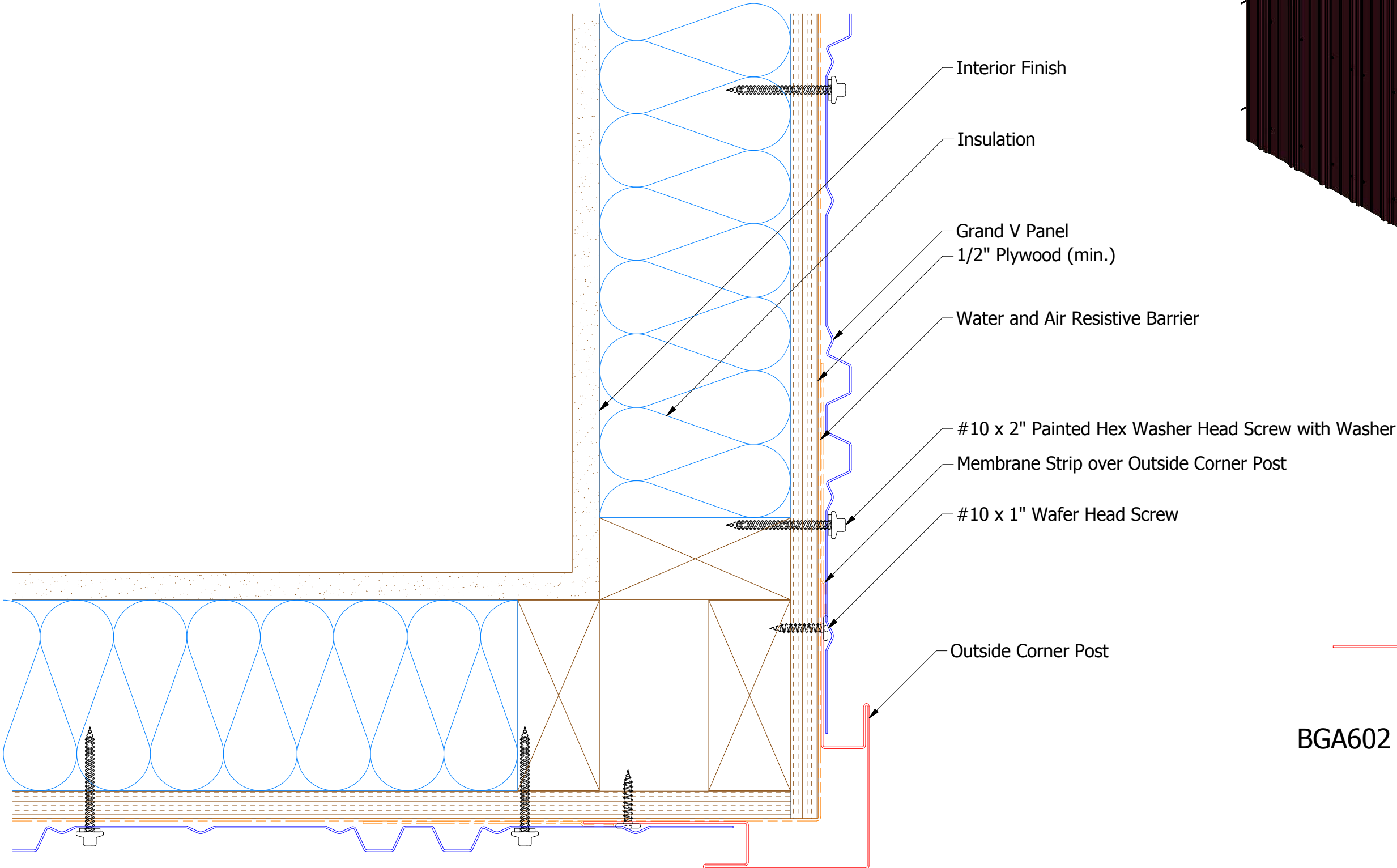


ATAS INTERNATIONAL, INC  
Allentown PA  
610-395-8445  
Mesa AZ  
480-558-7210

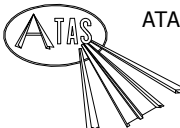
TITLE			
Grand V Inside Corner Detail			
DWG. NO.	DR	DMR	DATE
	APP	DAS	8/14/2016
MATERIAL		SH. SIZE	SCALE
		B	X:X

REV. NO.	DATE	DESCRIPTION OF REVISION	BY	APP

Vertical Panel



BGA602 - Outside Corner Post

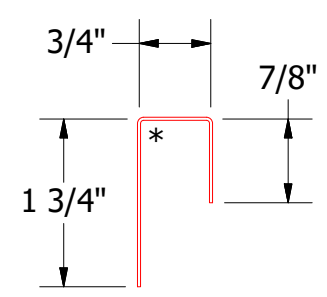
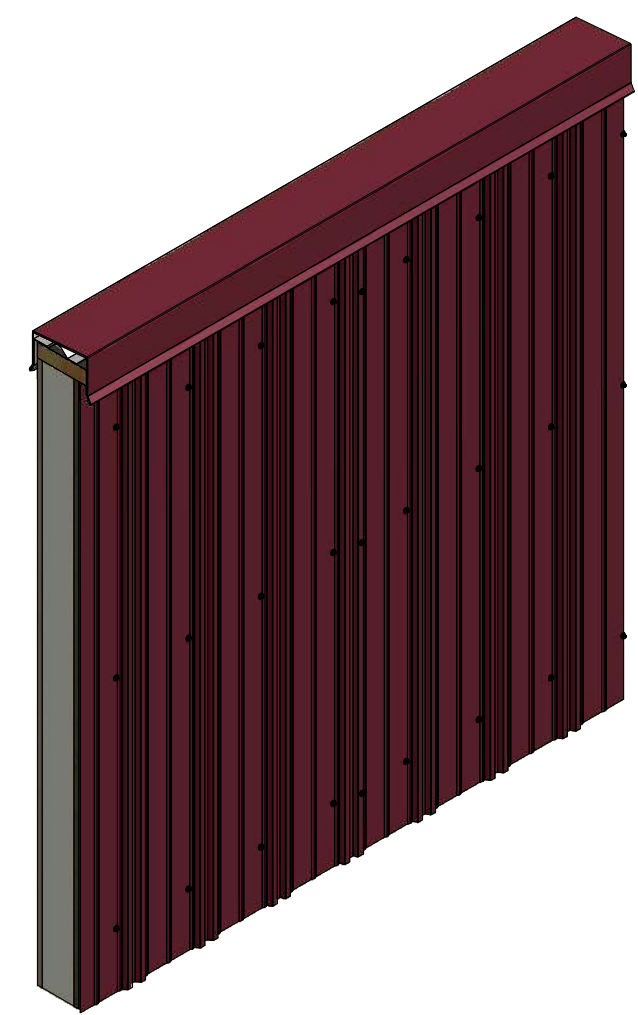
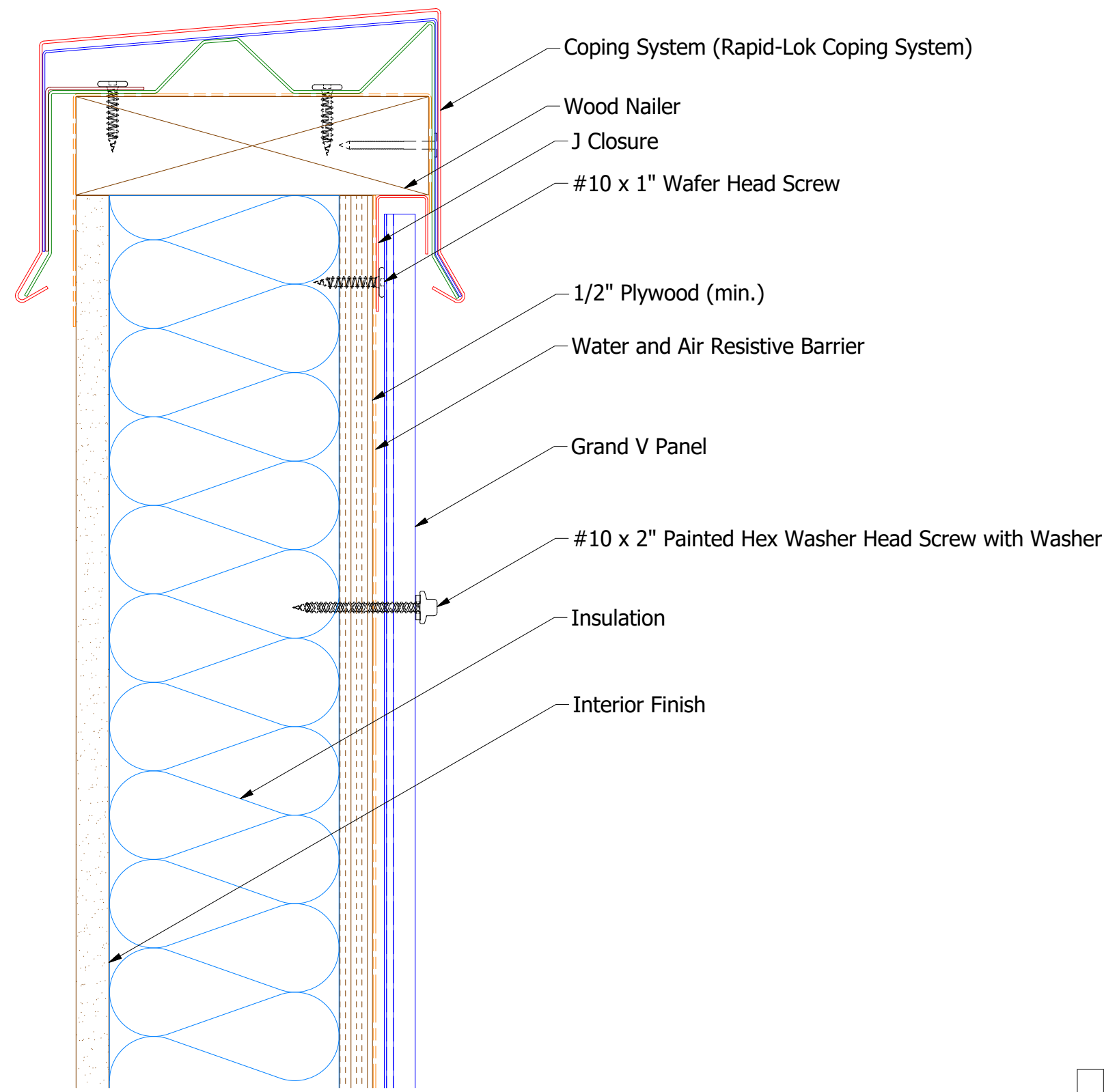


ATAS INTERNATIONAL, INC  
Allentown PA  
610-395-8445  
Mesa AZ  
480-558-7210

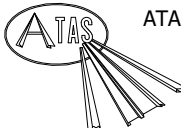
TITLE				Grand V Outside Corner Detail			
DWG. NO.		DR		DATE		6/14/2016	
APP		DAS		DATE		8/8/16	
SH. SIZE		B		SCALE		X:X	

REV. NO.	DATE	DESCRIPTION OF REVISION	BY	APP

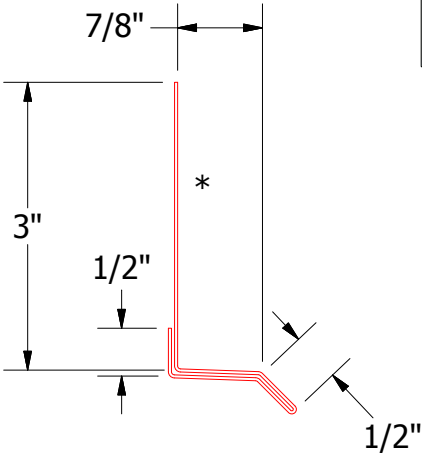
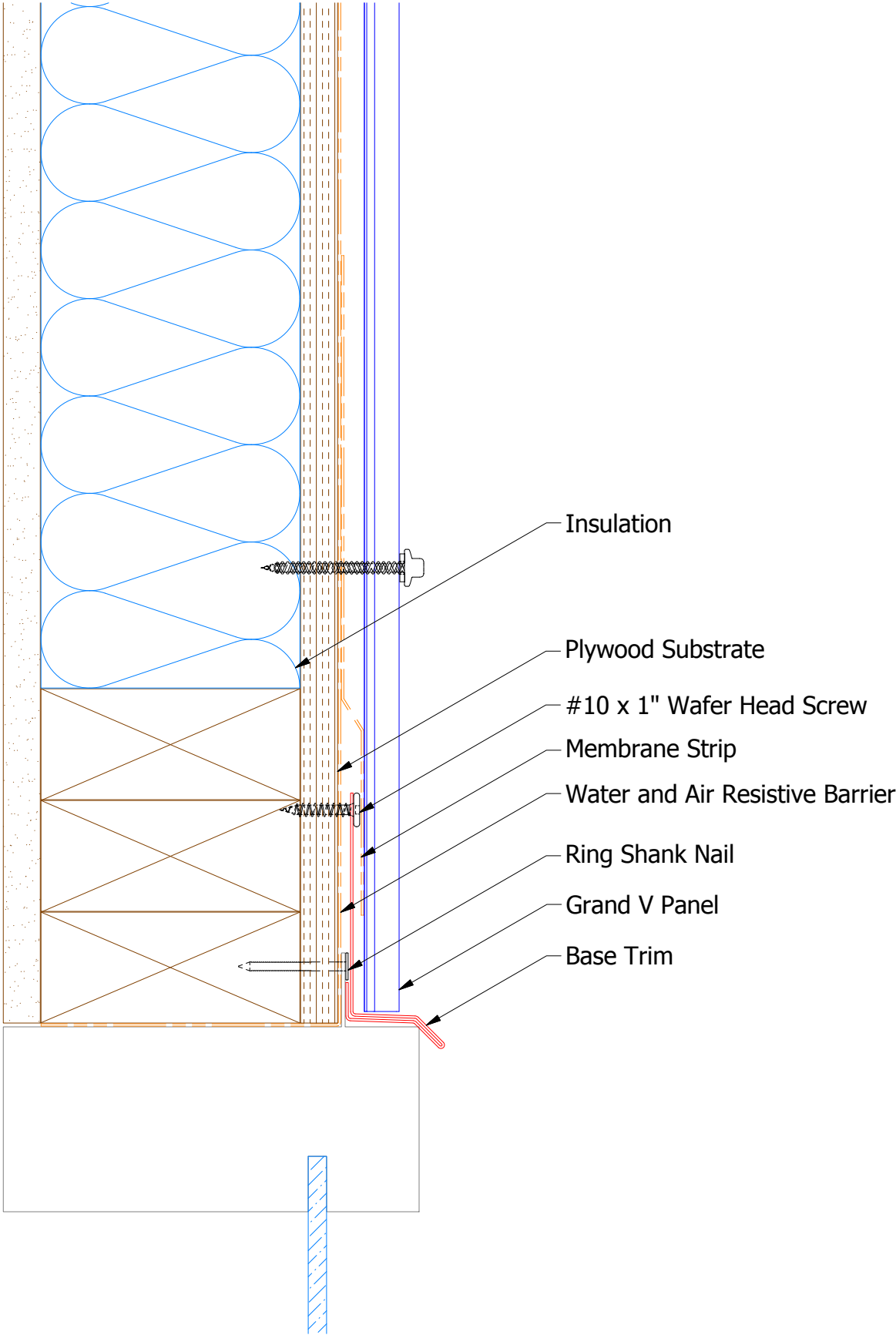
Vertical Panel



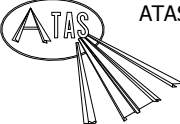
BGA270 - J Closure

				 ATAS INTERNATIONAL, INC Allentown PA 610-395-8445 Mesa AZ 480-558-7210			
				TITLE Grand V Top of Wall Detail			
				DWG. NO.		DR DMR	DATE 6/15/2016
						APP DAS	DATE 8/8/16
				MATERIAL		SH. SIZE B	SCALE X:X
REV. NO.	DATE	DESCRIPTION OF REVISION	BY	APP			

Vertical Panel



BGA661 - Base Trim



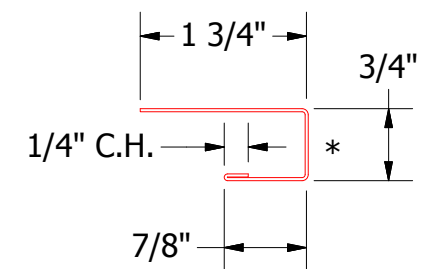
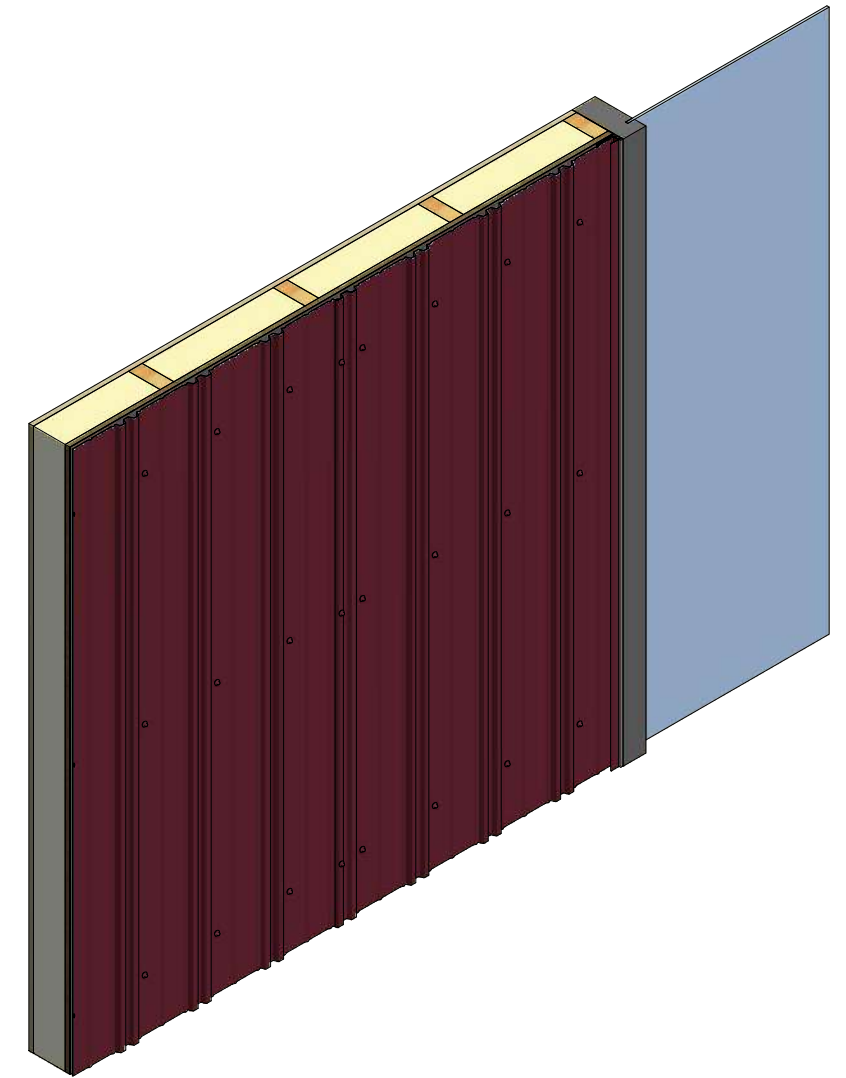
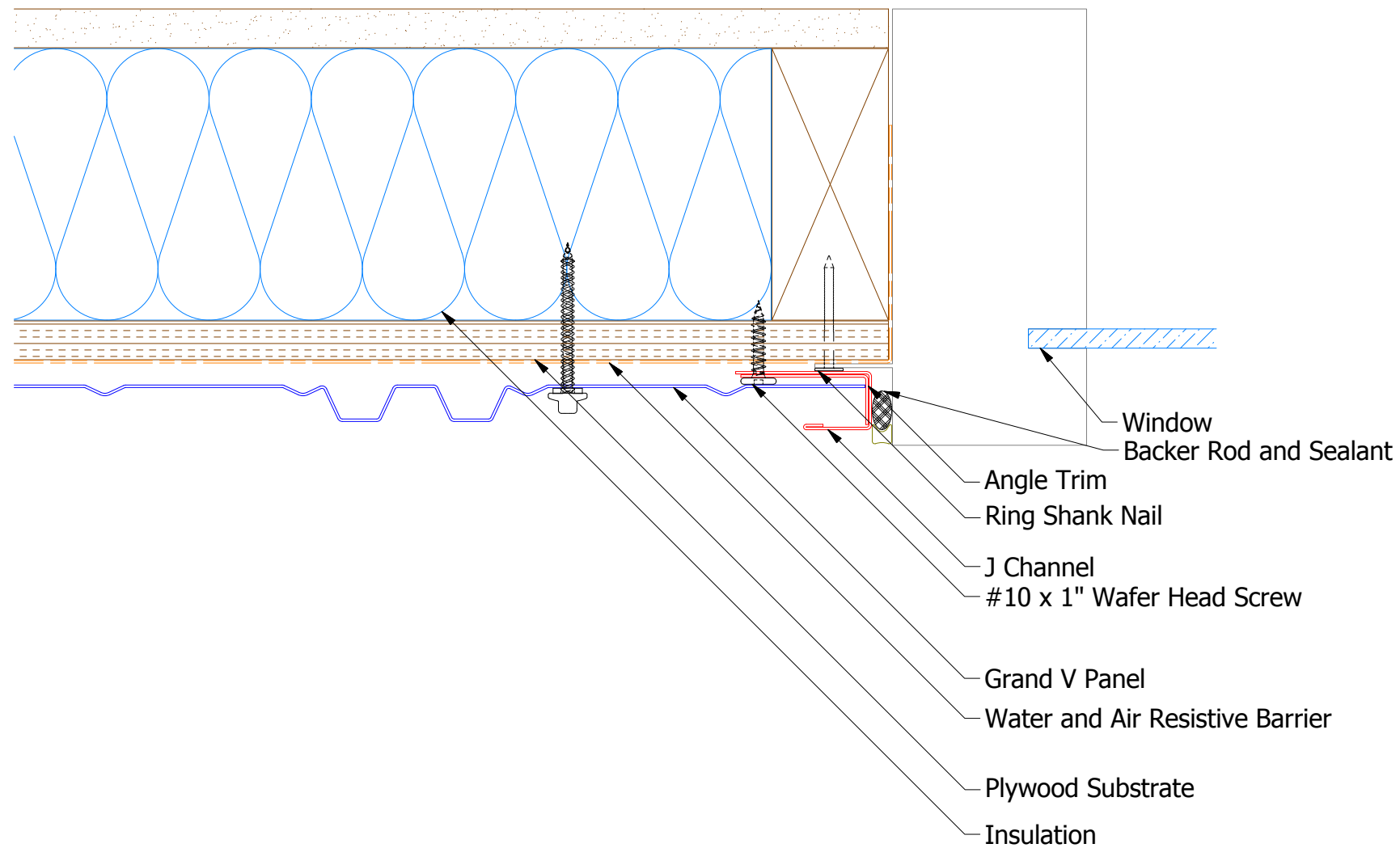
ATAS INTERNATIONAL, INC  
Allentown PA  
610-395-8445  
Mesa AZ  
480-558-7210

TITLE Grand V Head Window Flange Detail			
DWG. NO.		DR MBP	DATE 7/30/2018
APP		DATE	
MATERIAL		SH. SIZE B	SCALE X:X

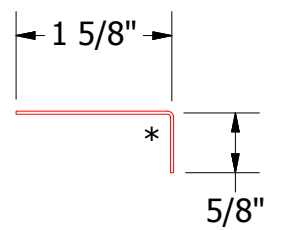
REV. NO.	DATE	DESCRIPTION OF REVISION	BY	APP



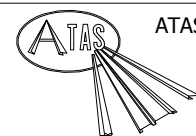
## Vertical Panel



## BGA034 - J Channel



## BGA680 - Angle Trim

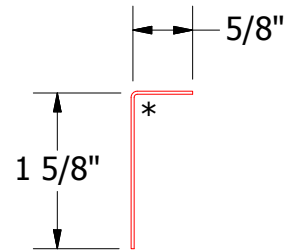
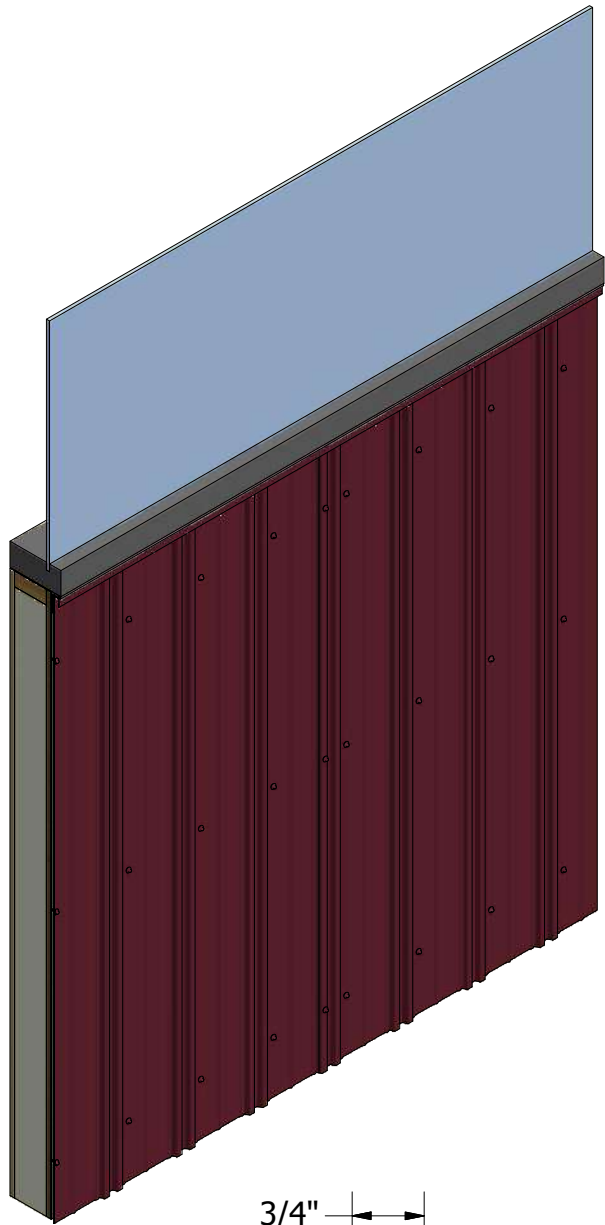
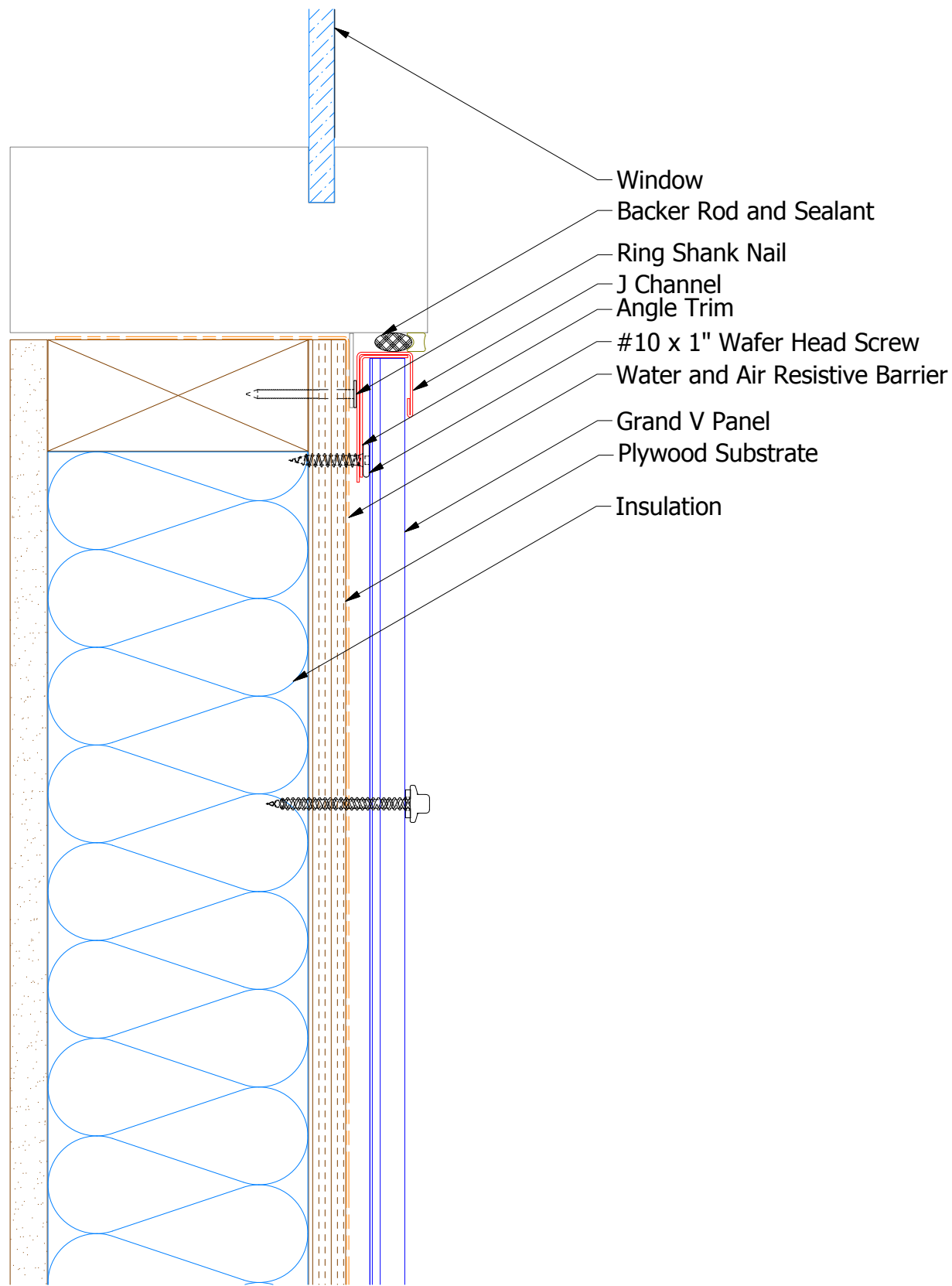



**ATAS INTERNATIONAL, INC**  
 Allentown PA  
 610-395-8445  
 Mesa AZ  
 480-558-7210

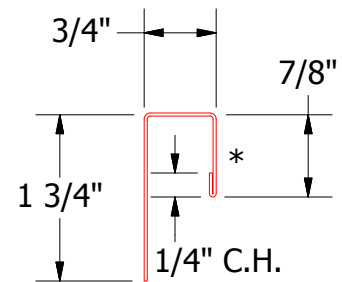
					TITLE
					Grand V Jamb Window Flange Detail
					DWG. NO.
					DR MBP DATE 7/30/2018
					MATERIAL
					APP
					SH. SIZE B SCALE X:X
REV. NO.	DATE	DESCRIPTION OF REVISION	BY	APP	




Vertical Panel



BGA680 - Angle Trim



BGA034 - J Channel

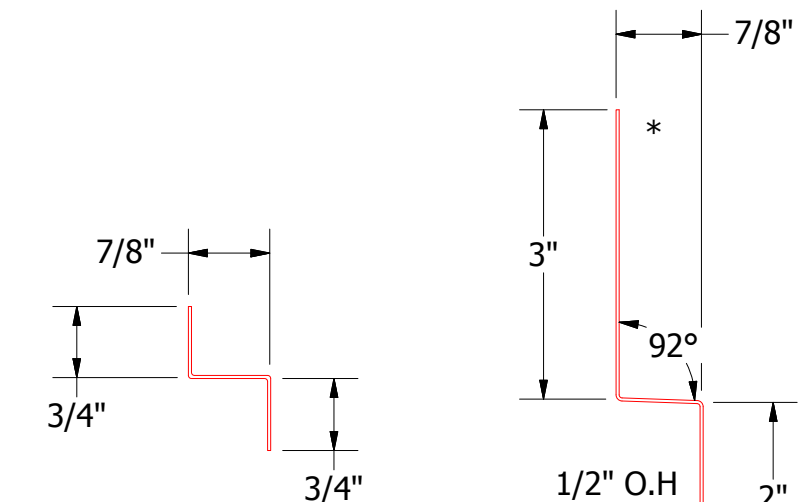
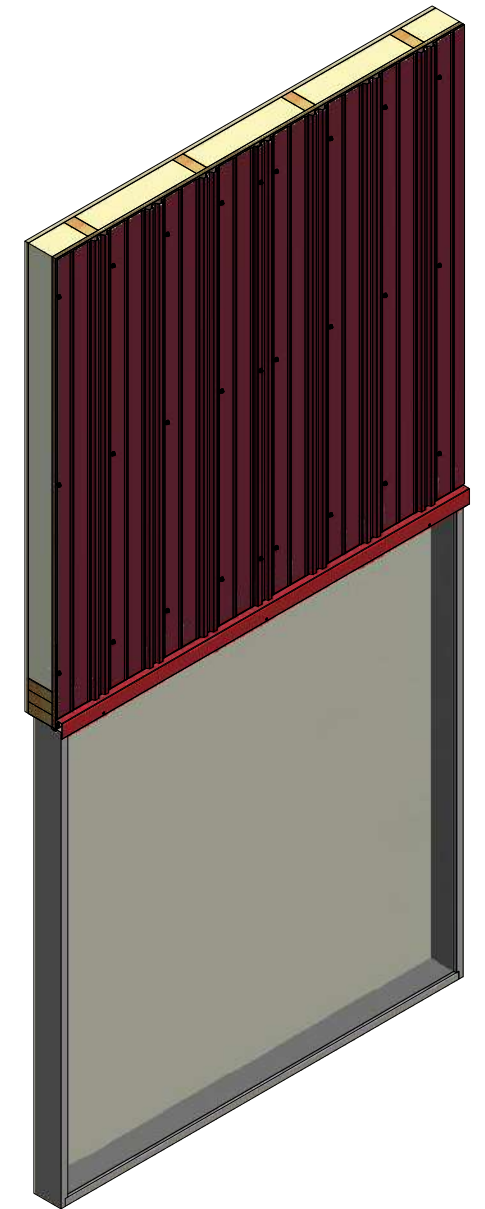
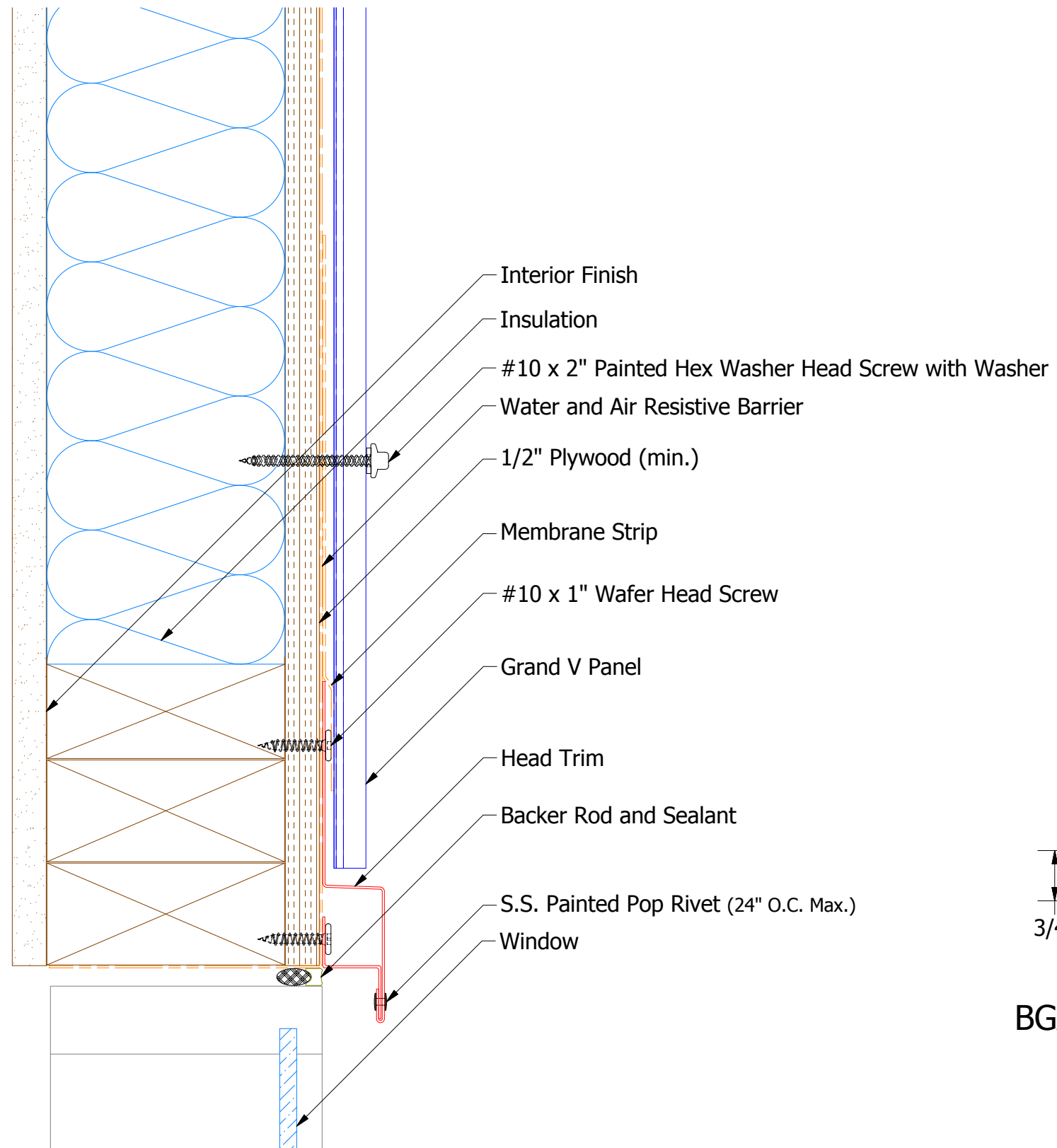


ATAS INTERNATIONAL, INC  
Allentown PA  
610-395-8445  
Mesa AZ  
480-558-7210

TITLE Grand V Window Sill Flange Detail			
DWG. NO.		DR MBP	DATE 7/30/2018
MATERIAL		APP	DATE
REV. NO.	DATE	DESCRIPTION OF REVISION	BY APP
SH. SIZE B		SCALE X:X	

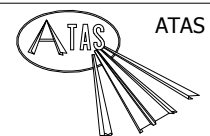
REV. NO.	DATE	DESCRIPTION OF REVISION	BY	APP

## Vertical Panel



## BGA680 - Support Z

## BGA550 - Head Trim

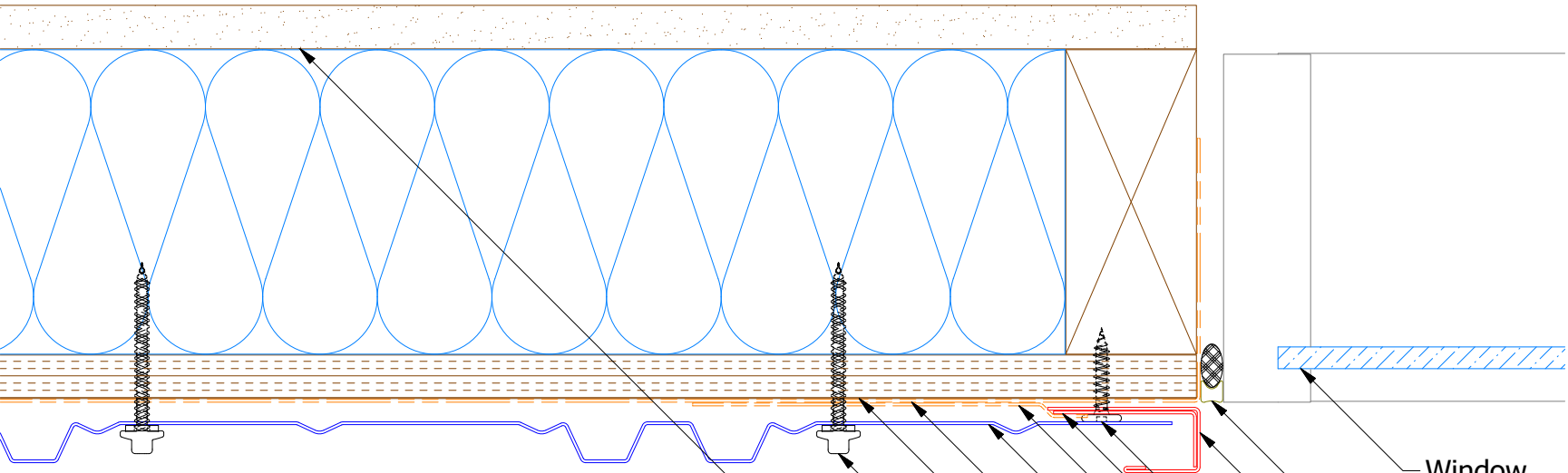


**ATAS INTERNATIONAL, INC**  
Allentown PA  
610-395-8445  
Mesa AZ  
480-558-7210

TITLE	Grand V Head Existing Window Detail
-------	-------------------------------------

					Grand V Head Existing Window Detail			
					DWG. NO.		DR MBP	DATE 7/19/18
					MATERIAL		APP	DATE
REV. NO.	DATE	DESCRIPTION OF REVISION	BY	APP			SH. SIZE B	SCALE X:X

Vertical Panel



Window

Backer Rod and Sealant

J Channel

#10 x 1" Wafer Head Screw

Angle Trim

Membrane Strip

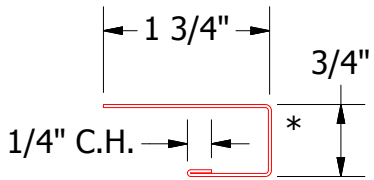
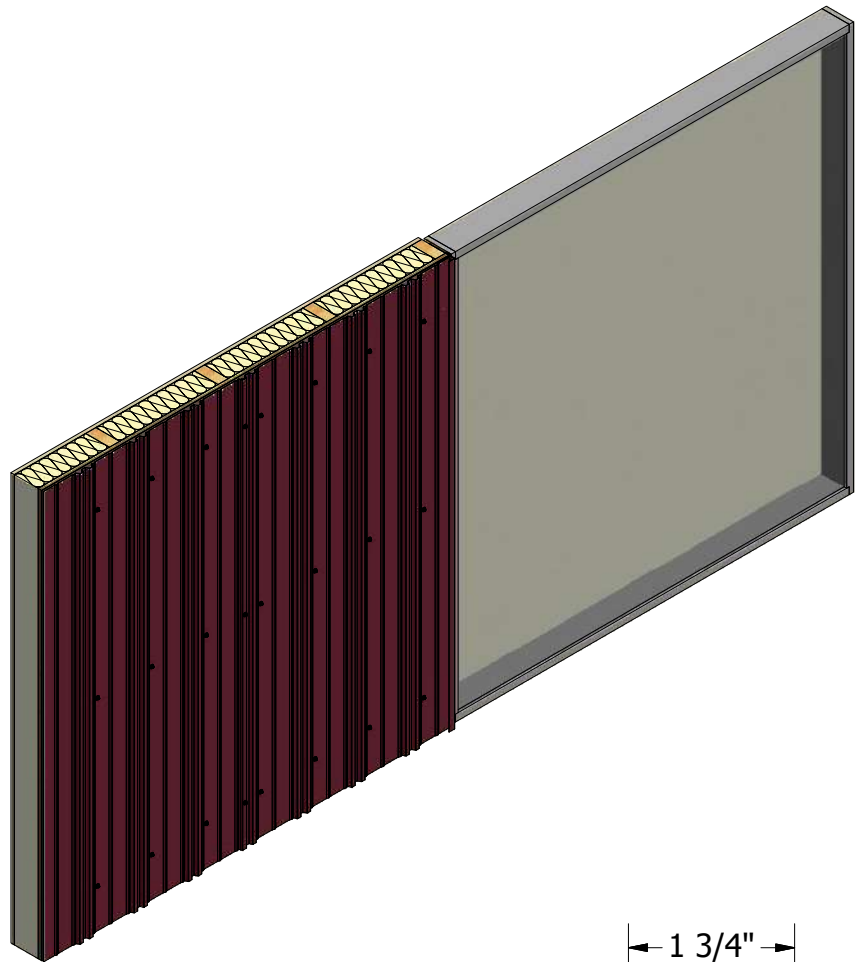
Grand V Panel

Water and Air Resistive Barrier

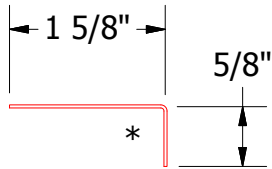
1/2" Plywood (min.)

#10 x 2" Painted Hex Washer Head Screw with Washer

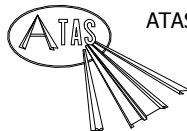
Interior Finish



7/8" BGA034 - J Channel



BGA680 - Angle Trim

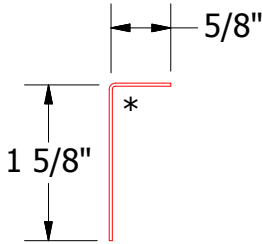
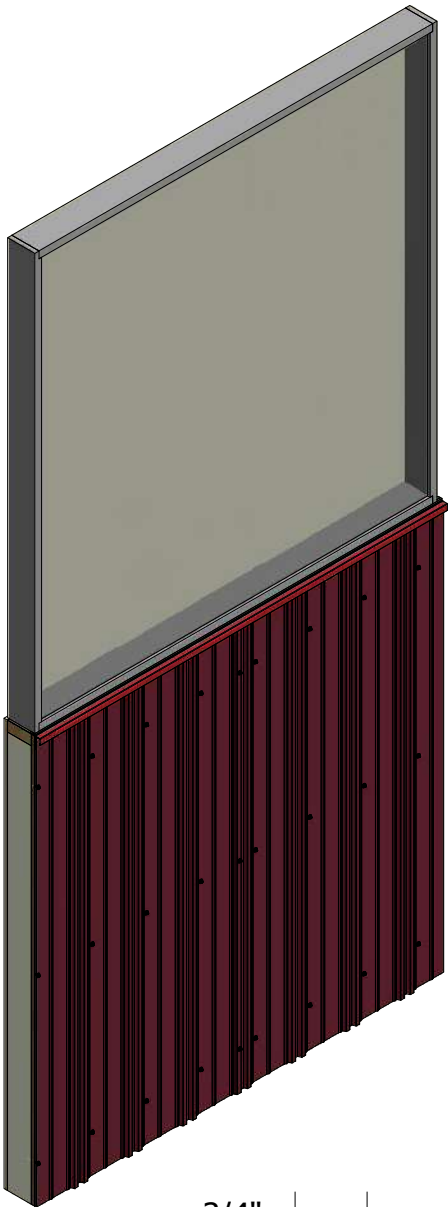
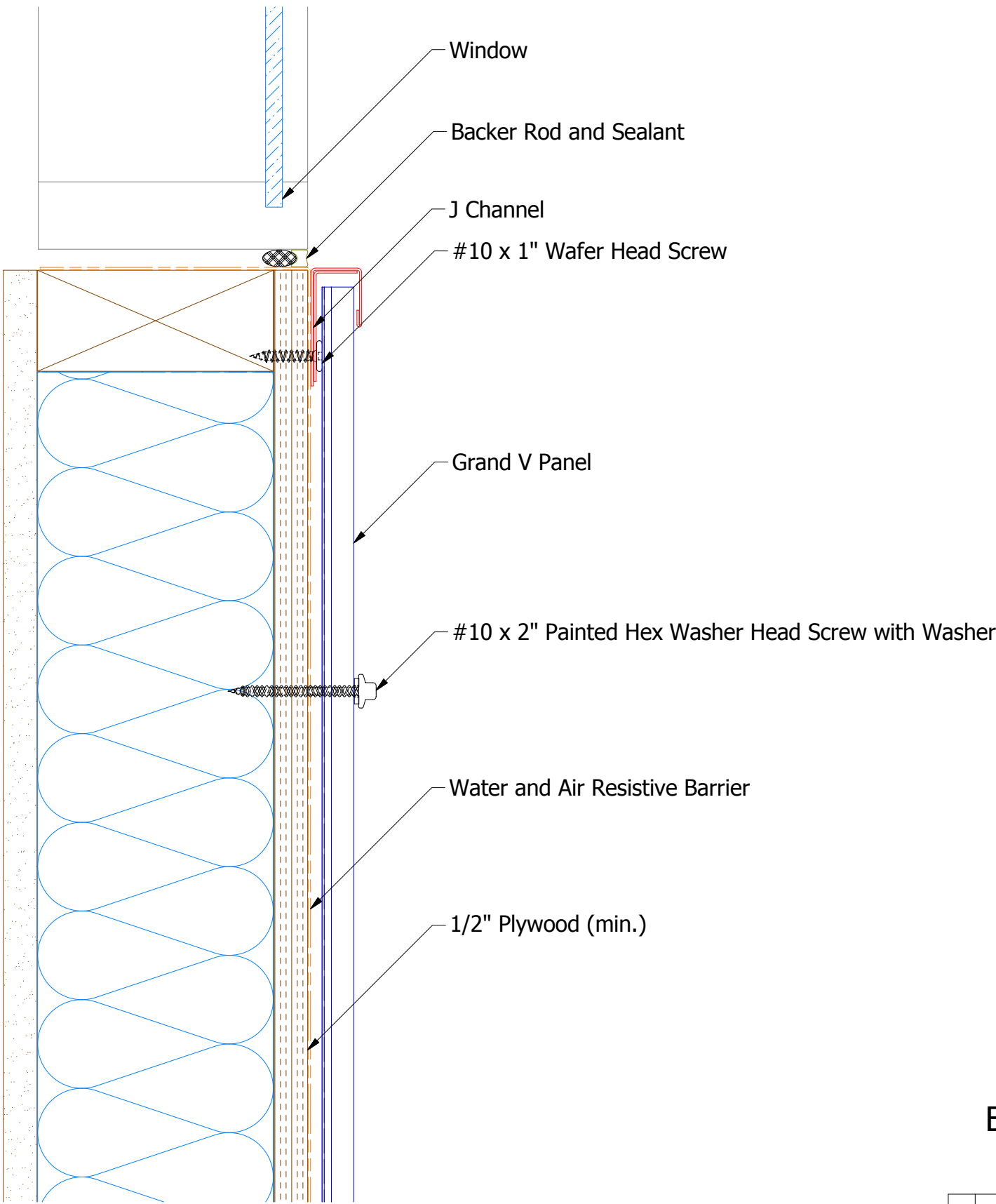


ATAS INTERNATIONAL, INC  
Allentown PA  
610-395-8445  
Mesa AZ  
480-558-7210

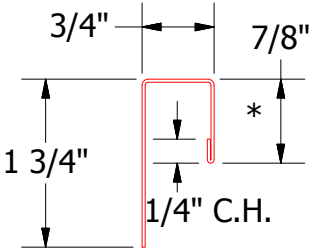
TITLE  
Grand V Jamb Existing Window Detail

REV. NO.	DATE	DESCRIPTION OF REVISION	BY	APP	DWG. NO.	DR MBP	DATE 7/19/18
					MATERIAL	SH. SIZE B	SCALE X:X

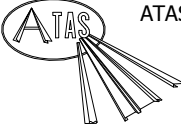
Vertical Panel



BGA280 - Angle Trim



BGA034 - J Channel

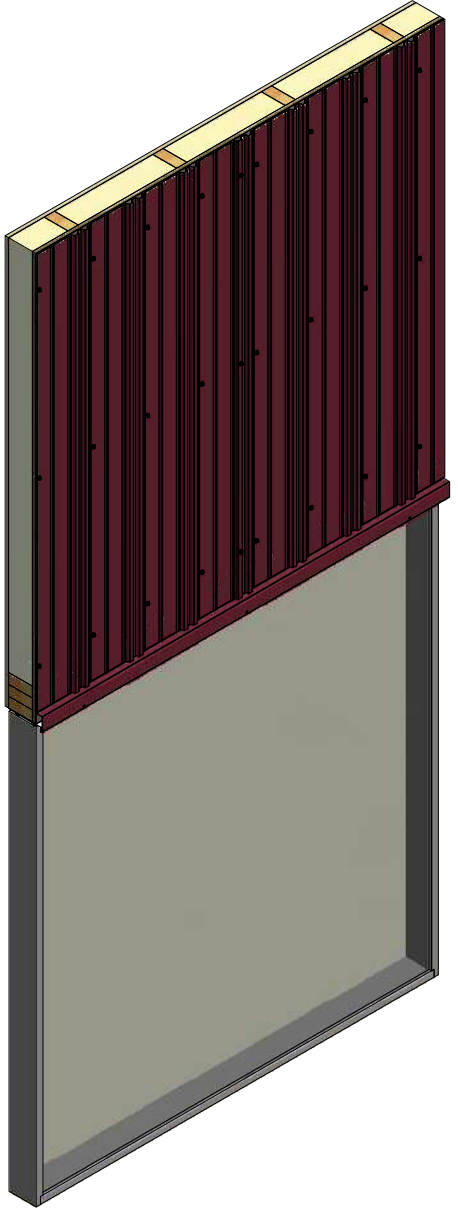
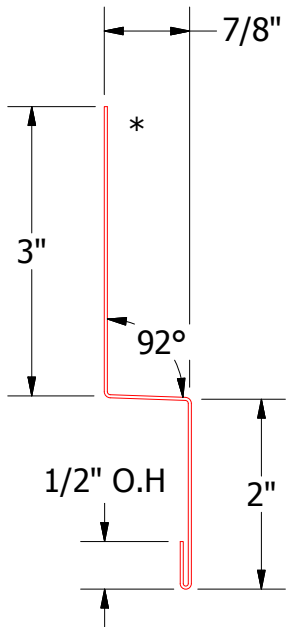
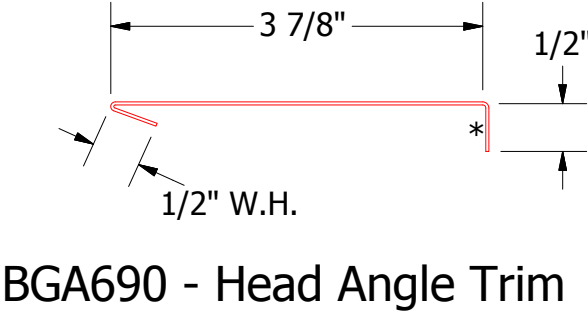
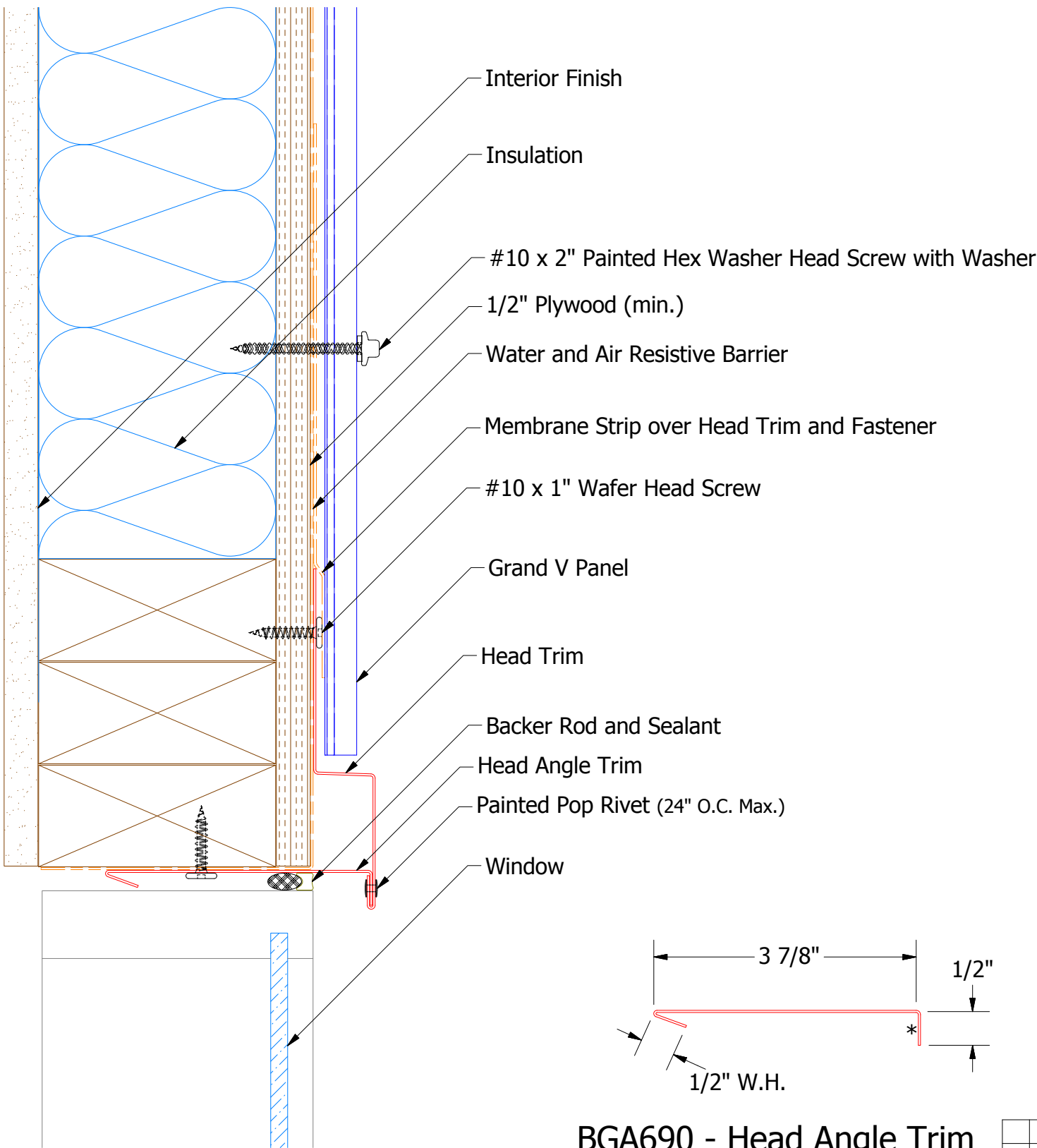


ATAS INTERNATIONAL, INC  
Allentown PA  
610-395-8445  
Mesa AZ  
480-558-7210

TITLE Grand V Window Sill Existing Window Detail			
DWG. NO.		DR MBP	DATE 7/19/18
APP		DATE	
MATERIAL		SH. SIZE B	SCALE X:X

REV. NO.	DATE	DESCRIPTION OF REVISION	BY	APP

Vertical Panel



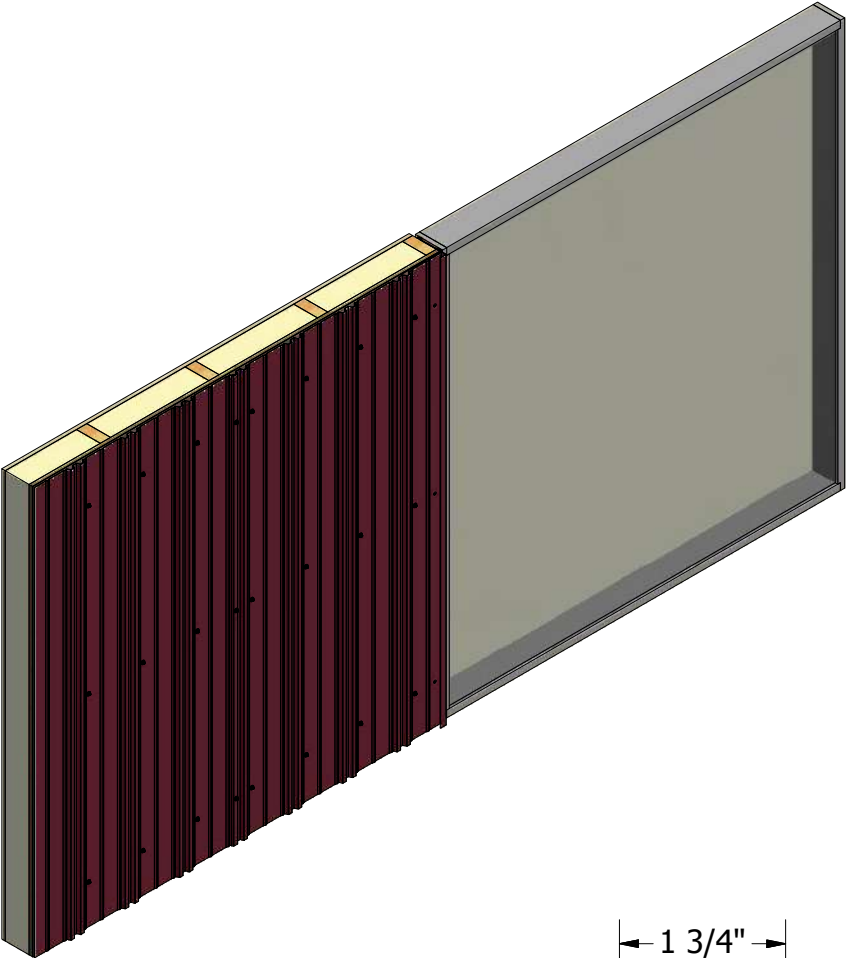
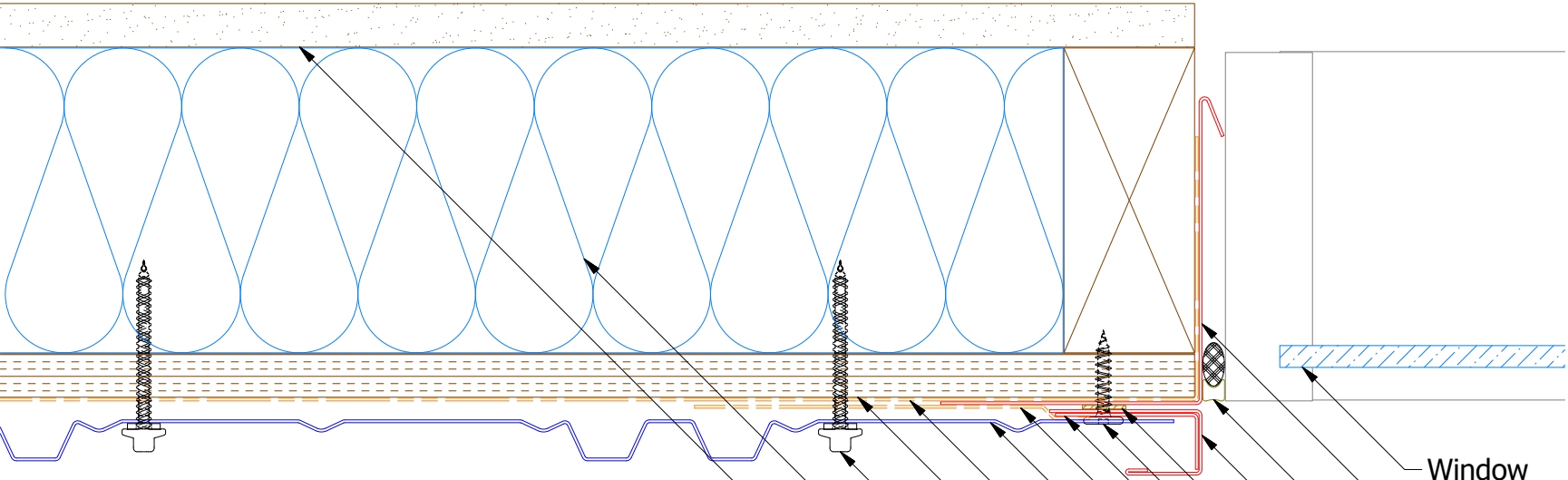


ATAS INTERNATIONAL, INC  
Allentown PA  
610-395-8445  
Mesa AZ  
480-558-7210

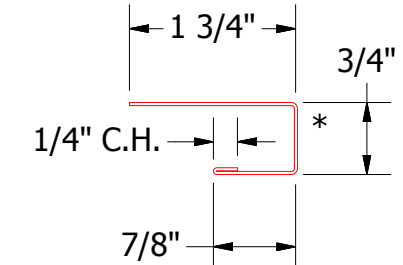
TITLE			
Grand V Head Detail			
DWG. NO.	DR	DMR	DATE
	APP	DAS	6/13/2016
MATERIAL		SH. SIZE	SCALE
		B	X:X

REV. NO.	DATE	DESCRIPTION OF REVISION	BY	APP

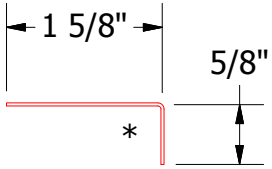
Vertical Panel



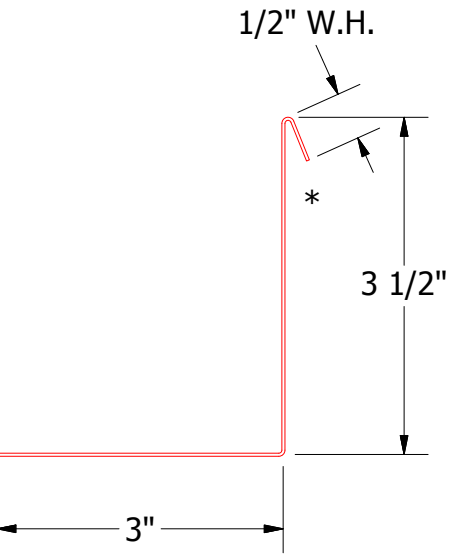
- Window
- Angle Trim with Return
- Backer Rod and Sealant
- J Channel
- Butyl Tape
- #10 x 1" Wafer Head Screw
- Angle Trim
- Membrane Strip over J Channel and Angle Trim
- Grand V Panel
- Water and Air Resisitive Barrier
- 1/2" Plywood (min.)
- #10 x 2" Painted Hex Washer Head Screw with Washer
- Insulation
- Interior Finish



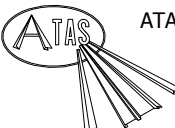
BGA034 - J Channel



BGA680 - Angle Trim



BGA683 - Angle Trim with Return

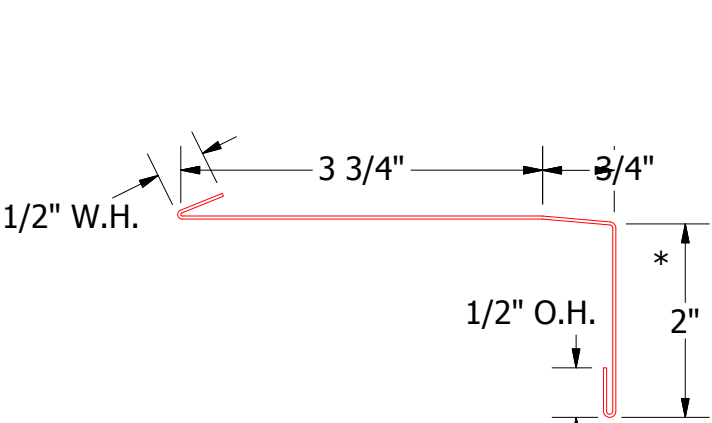
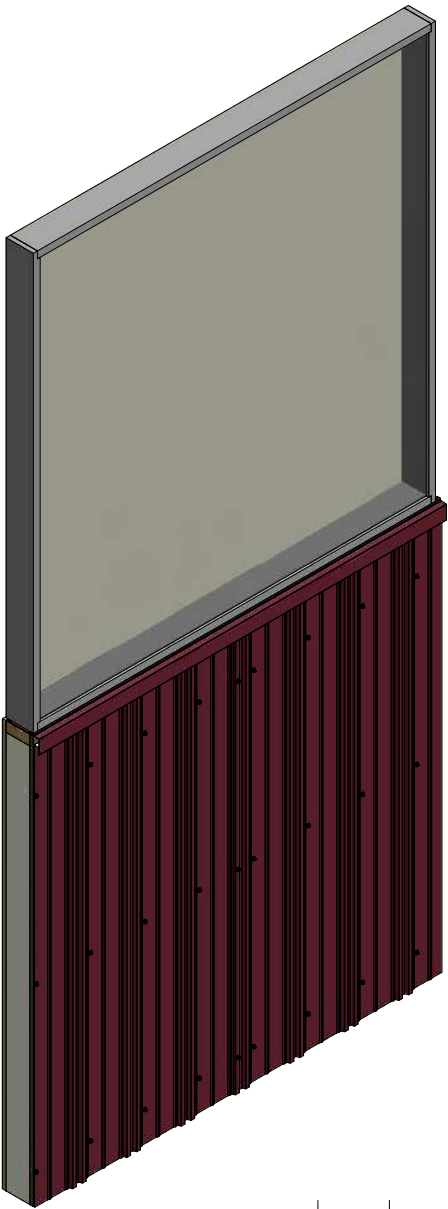
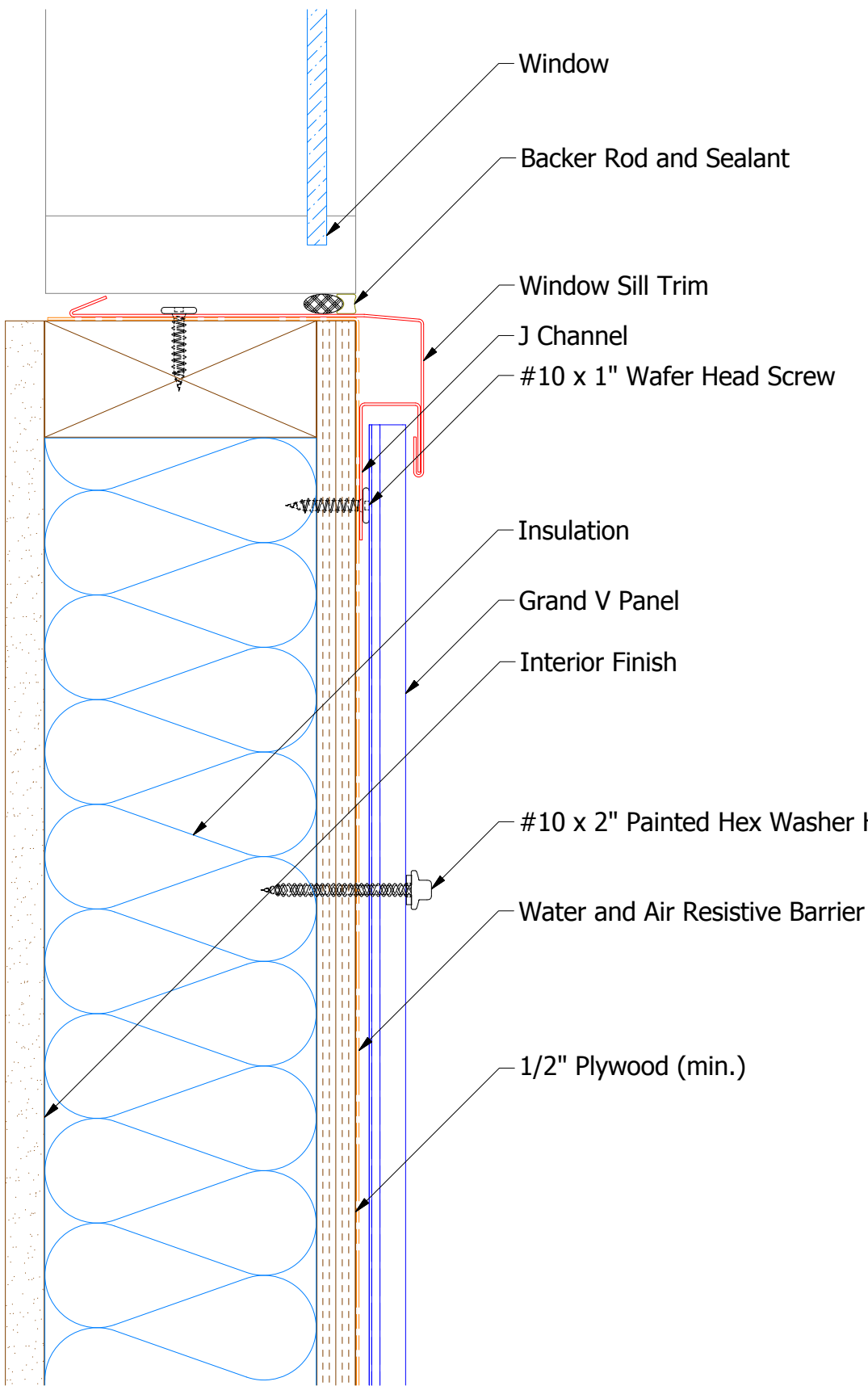


ATAS INTERNATIONAL, INC  
Allentown PA  
610-395-8445  
Mesa AZ  
480-558-7210

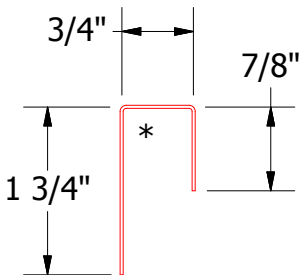
TITLE			
Grand V Jamb Detail			
DWG. NO.	DR	DMR	DATE
	APP	DAS	6/14/2016
MATERIAL		SH. SIZE	SCALE
		B	X:X

REV. NO.	DATE	DESCRIPTION OF REVISION	BY	APP

Vertical Panel

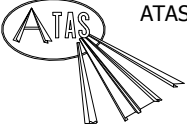


BGA670 - Window Sill Trim



BGA270 - J Closure

				TITLE			
				Grand V Window Sill Detail			
				DWG. NO.		DR	DATE
						DMR	6/15/2016
						APP	DATE
						DAS	8/8/16
				MATERIAL		SH. SIZE	SCALE
						B	X:X
REV. NO.	DATE	DESCRIPTION OF REVISION		BY	APP		



ATAS INTERNATIONAL, INC  
Allentown PA  
610-395-8445  
Mesa AZ  
480-558-7210

TITLE			
Grand V Window Sill Detail			
DWG. NO.		DR	DATE
		DMR	6/15/2016
		APP	DATE
		DAS	8/8/16
MATERIAL		SH. SIZE	SCALE
		B	X:X