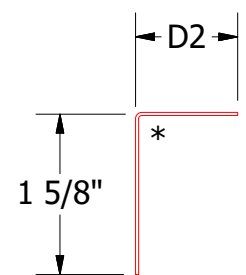
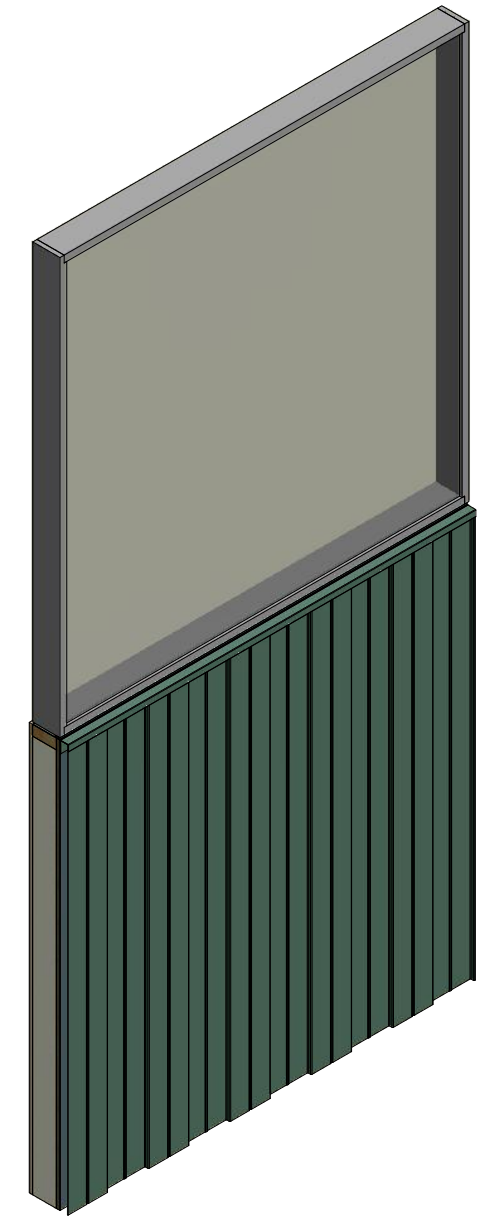
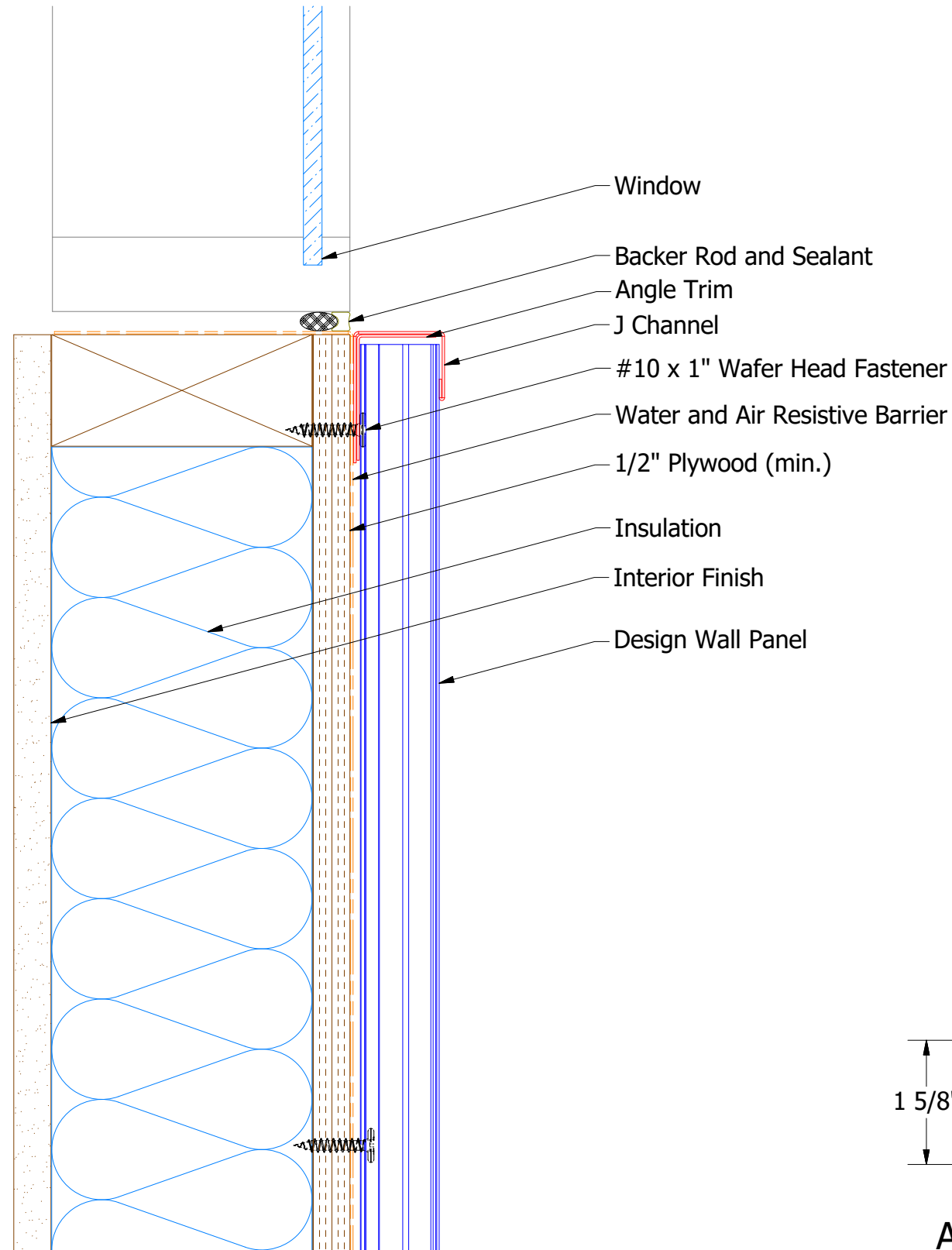
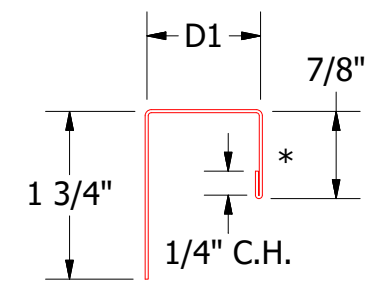


Vertical Panel



Angle Trim
 DWA680: D2=1"
 DSA680: D2=1 3/4"



J Channel
 DWA118: D1=1 1/8"
 DSA178: D1=1 7/8"

Note: * denotes color side.

ATAS ATAS INTERNATIONAL, INC
 Allentown PA
 610-395-8445
 Mesa AZ
 480-558-7210

TITLE			
Design Wall Existing Window Sill Detail			
REV. NO.	DATE	DESCRIPTION OF REVISION	BY / APP
01	7/19/2021	Changed Pop Rivets to VHB Tape	DMR

DWG. NO.	DR	DATE
	DMR	7/20/2018
MATERIAL	APP	DATE
SH. SIZE	B	SCALE
		X:X