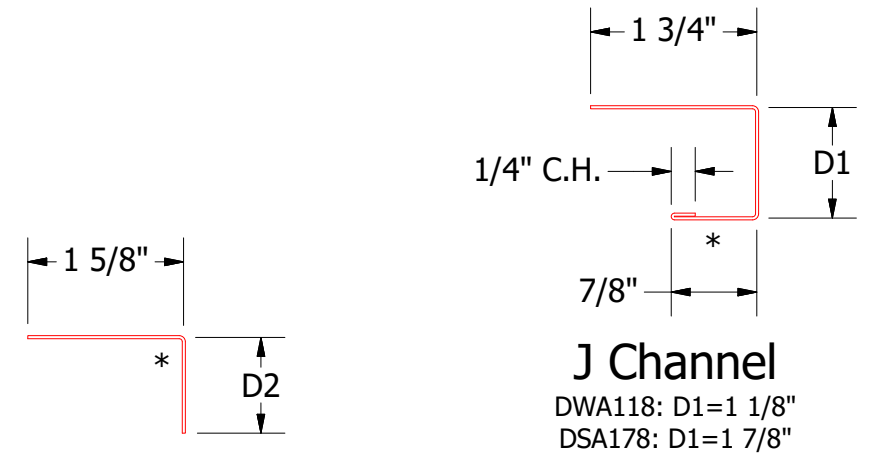
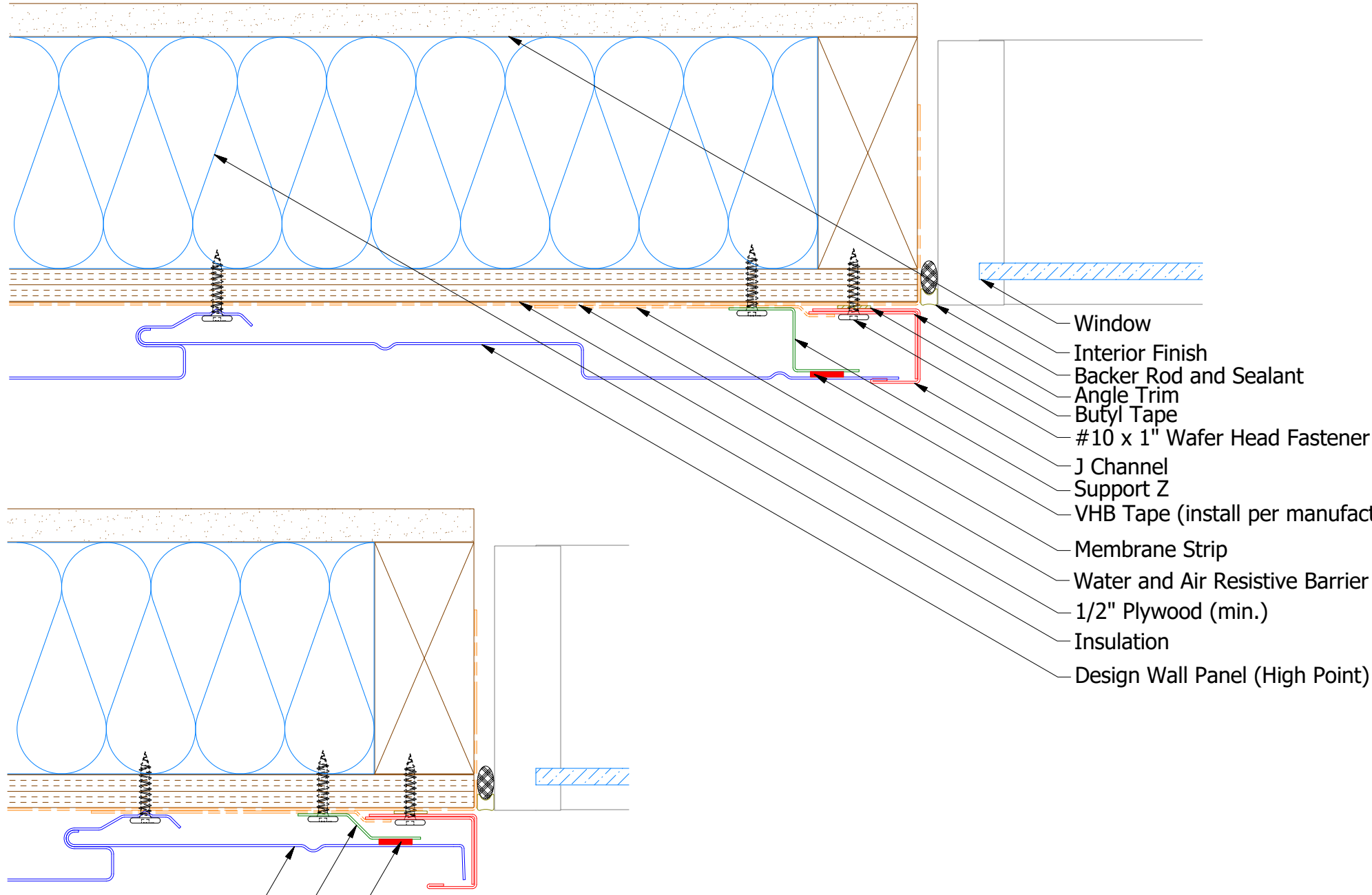
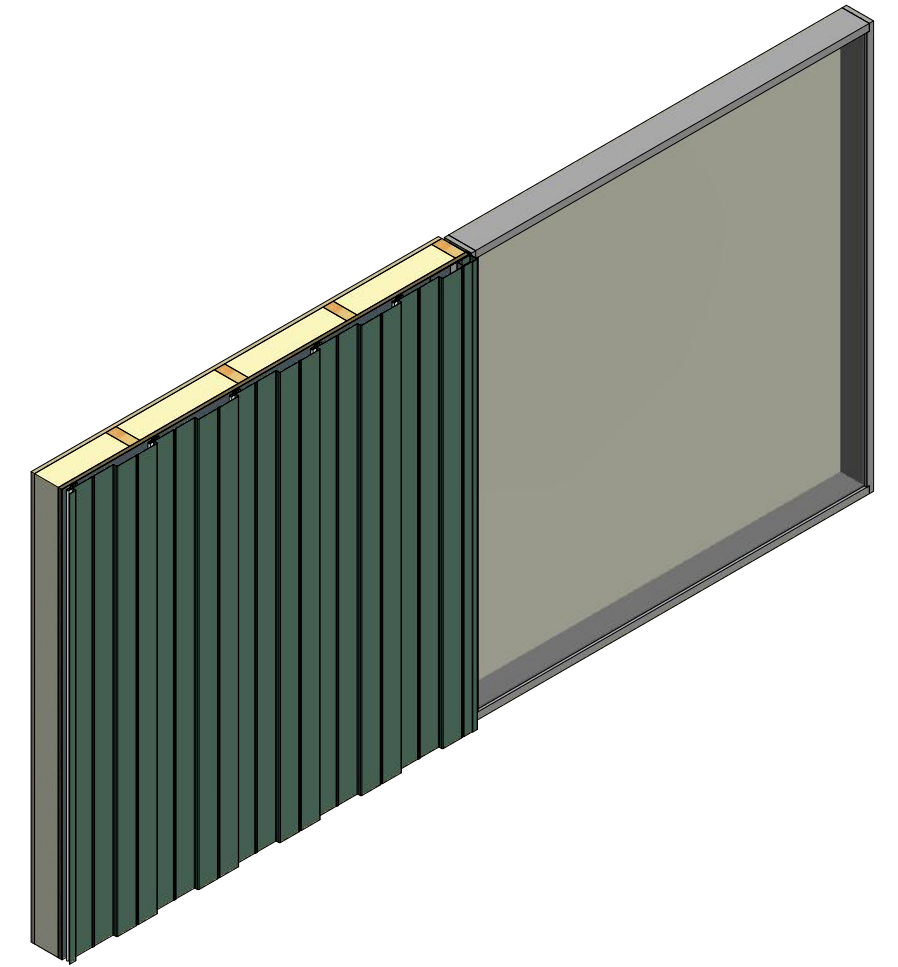


# Vertical Panel



**Angle Trim**  
 DWA680: D2=1"  
 DSA680: D2=1 1/2"



**Note:** \* denotes color side.  
**Note:** stainless steel pop rivets maybe needed along with VHB tape for longer panels.

TITLE				Design Wall Existing Jamb Detail			
01	7/19/2021	Changed Pop Rivets to VHB Tape	DMR	DR	DMR	DATE	7/17/2018
REV. NO.	DATE	DESCRIPTION OF REVISION	BY	APP	SH. SIZE	SCALE	X:X