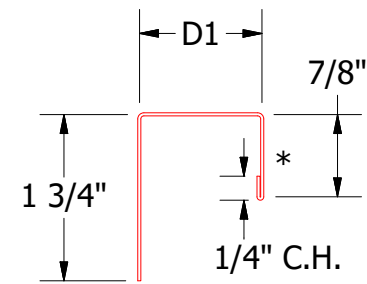
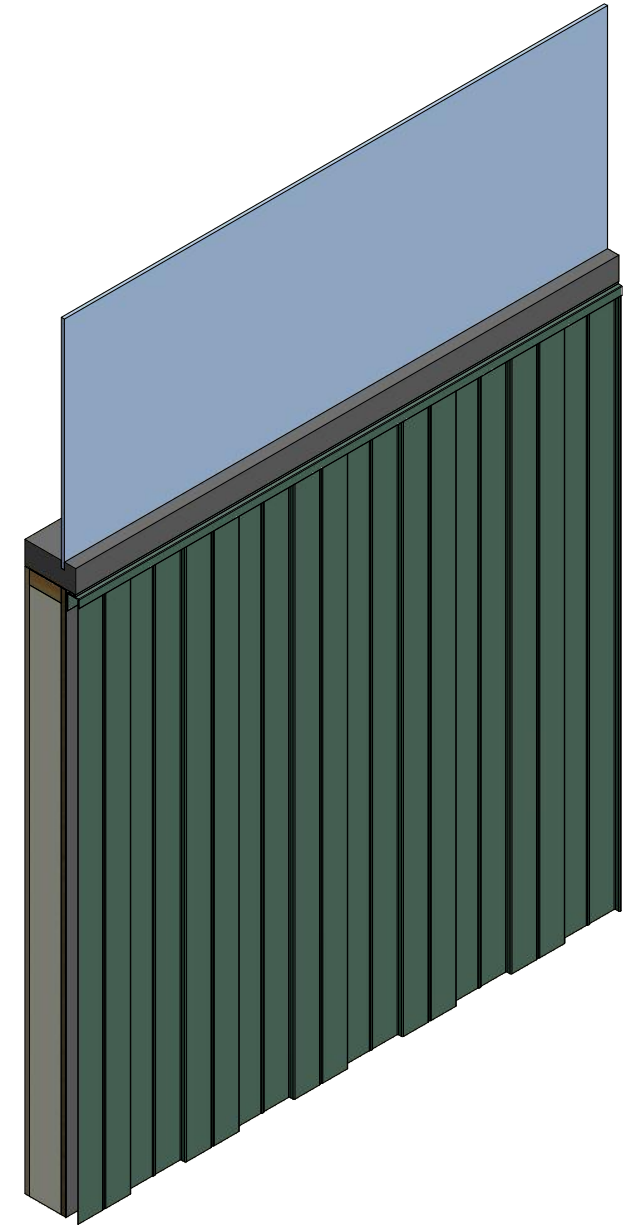
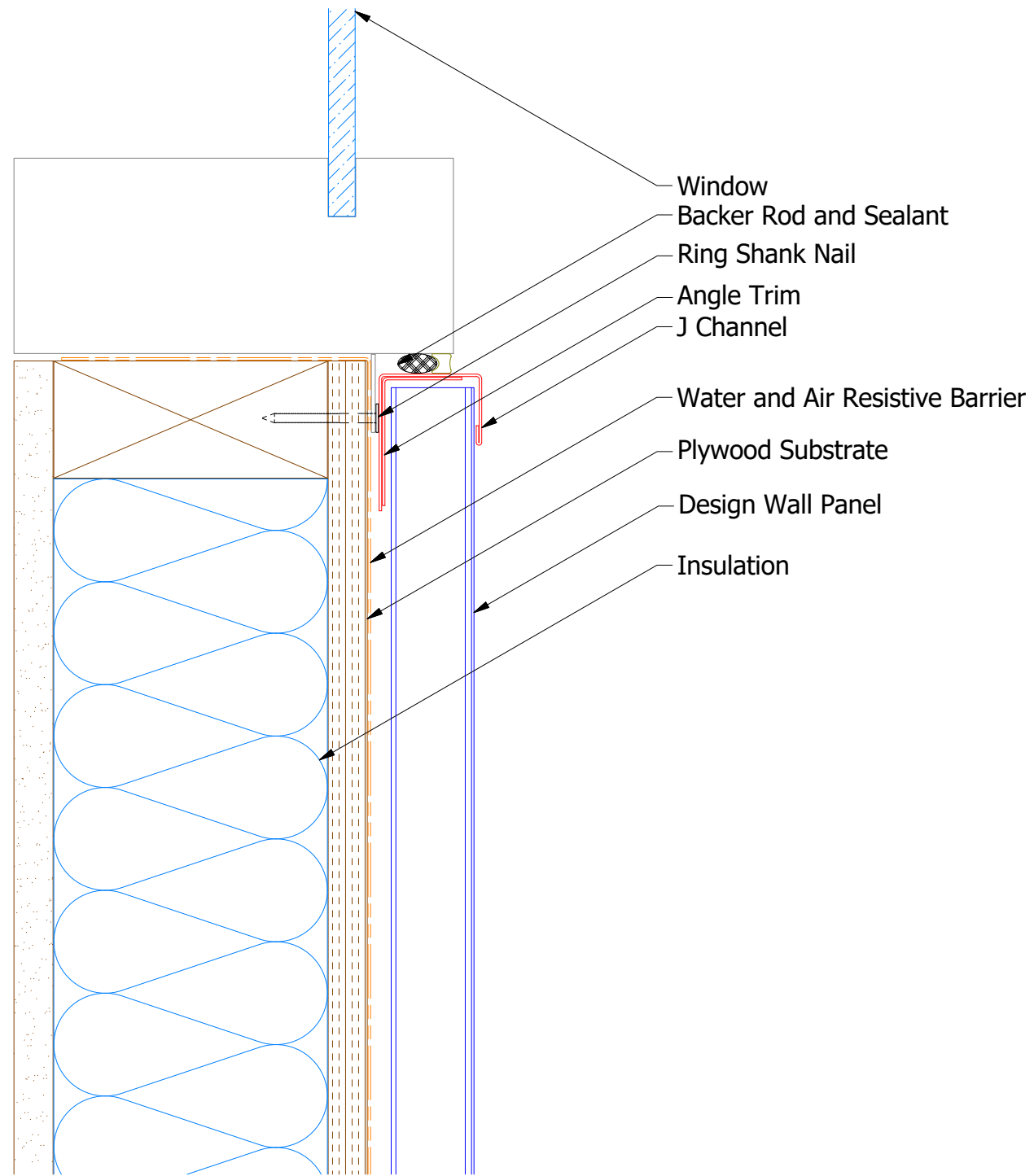
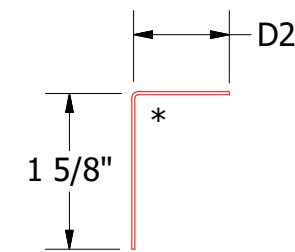


# Vertical Panel



**J Channel**  
 DWA118: D1= 1 1/8"  
 DSA178: D1= 1 7/8"



**Angle Trim**  
 DWA680: D2= 1"  
 DSA680: D2= 1 3/4"

**Note:** \* denotes color side.

**ATAS** ATAS INTERNATIONAL, INC  
 Allentown PA  
 610-395-8445  
 Mesa AZ  
 480-558-7210

**Design Wall Window Sill Flange Detail**

|          |           |                                |     |          |          |           |
|----------|-----------|--------------------------------|-----|----------|----------|-----------|
| 02       | 7/22/2021 | Changed Pop Rivets to VHB Tape | DMR | DWG. NO. | DR       | DATE      |
| 01       | 11/6/2019 | Updated SKU # for Angle Trim   | KRK |          | MBP      | 7/27/2018 |
| REV. NO. | DATE      | DESCRIPTION OF REVISION        | BY  | APP      | MATERIAL | SCALE     |
|          |           |                                |     |          | SH. SIZE | B X:X     |