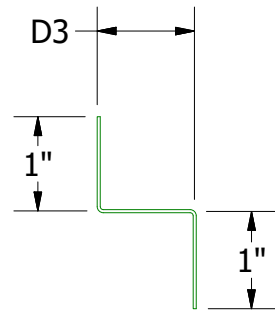
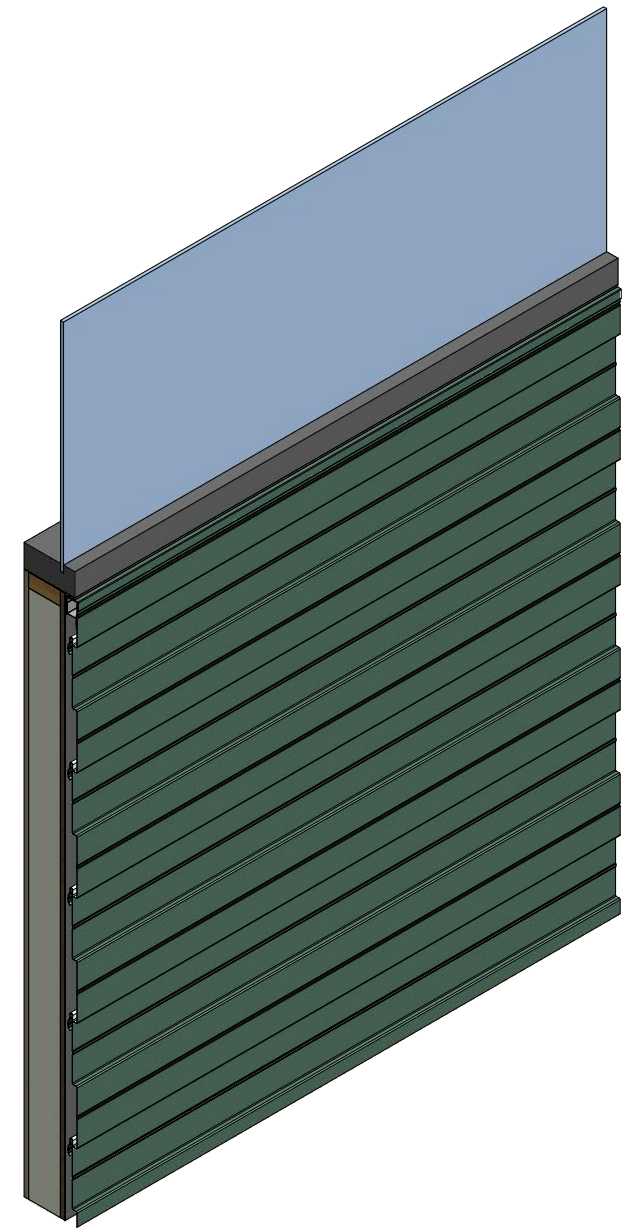
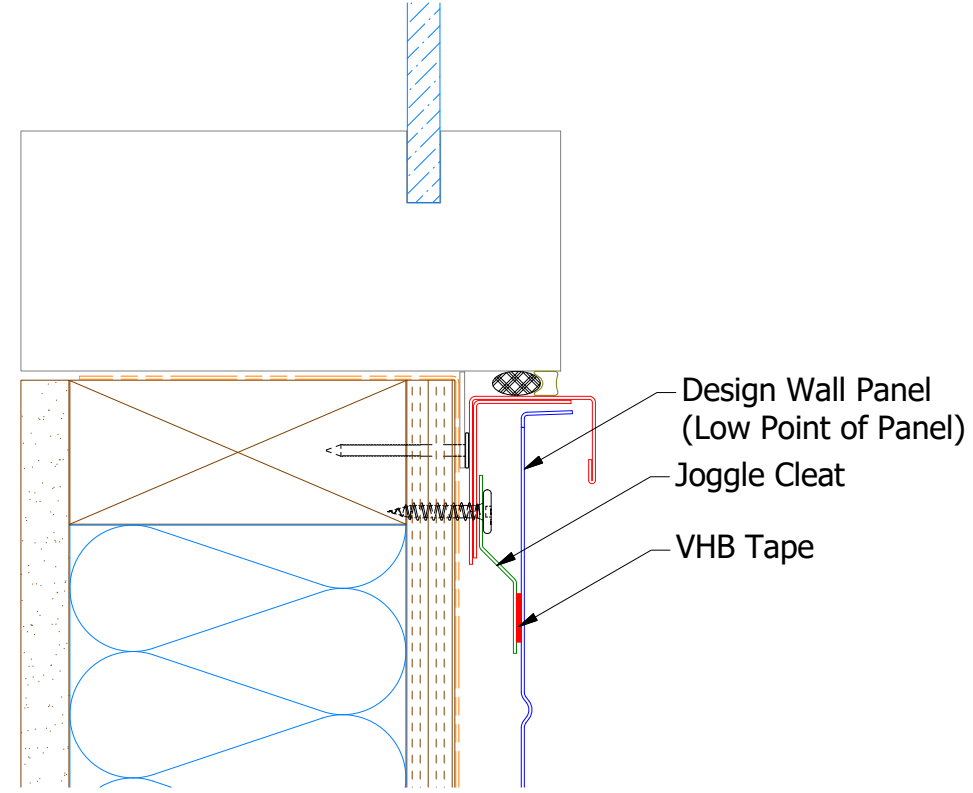
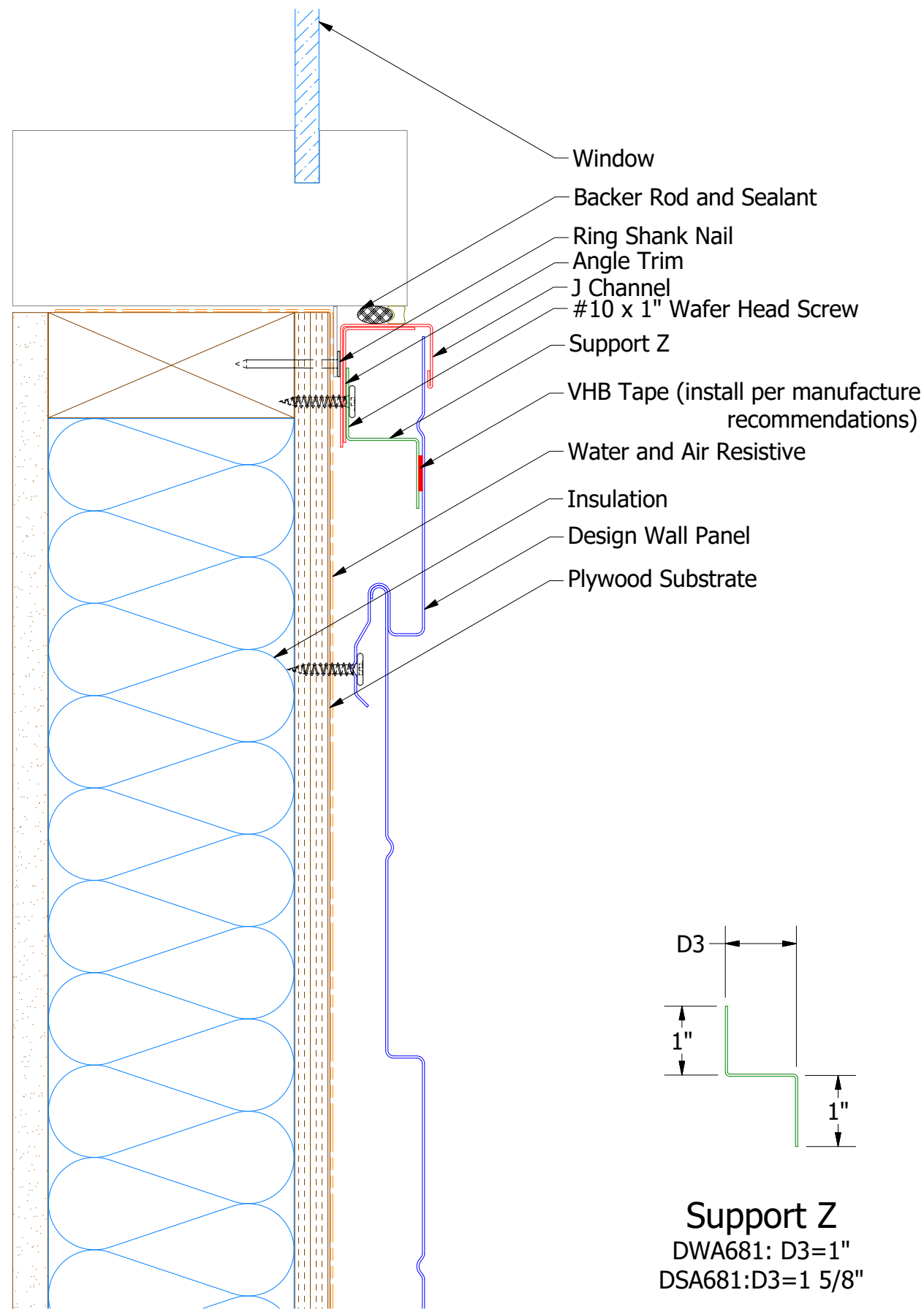
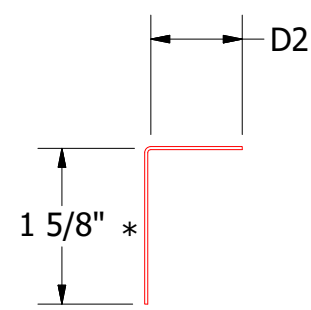


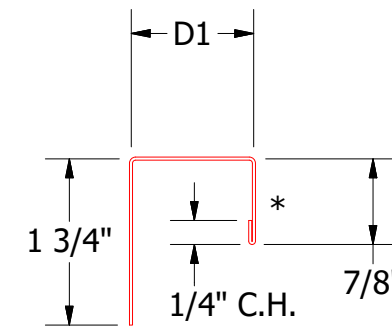
Horizontal Panel



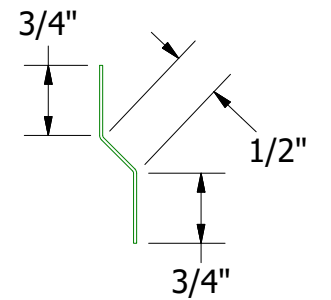
Support Z
DWA681: D3=1"
DSA681: D3=1 5/8"



Angle Trim
DWA680: D2= 1"
DSA680: D2= 1 3/4"



J Channel
DWA118: D1= 1 1/8"
DSA178: D1= 1 7/8"



DSA975/DWA975 - Joggle Cleat

Note: * denotes color side.

Note: stainless steel pop rivets maybe needed along with VHB tape for longer panels.

		ATAS INTERNATIONAL, INC Allentown PA 610-395-8445 Mesa AZ 480-558-7210					
		TITLE Design Wall Window Sill Flange Detail					
REV. NO.	DATE	DESCRIPTION OF REVISION	BY	APP	DWG. NO.	DR	DATE
02	7/22/2021	Changed Pop Rivets to VHB Tape	DMR			MBP	7/27/2018
01	11/6/2019	Updated SKU # for Angle Trim	KRK				
					MATERIAL		
					SH. SIZE	B	SCALE
							X:X