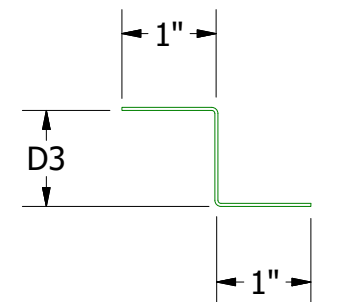
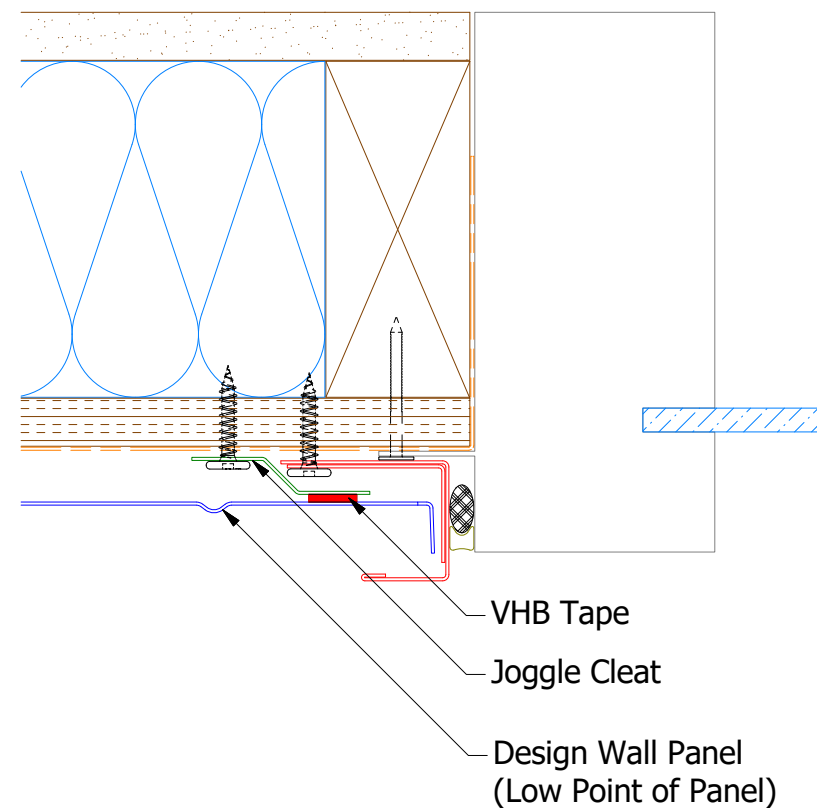
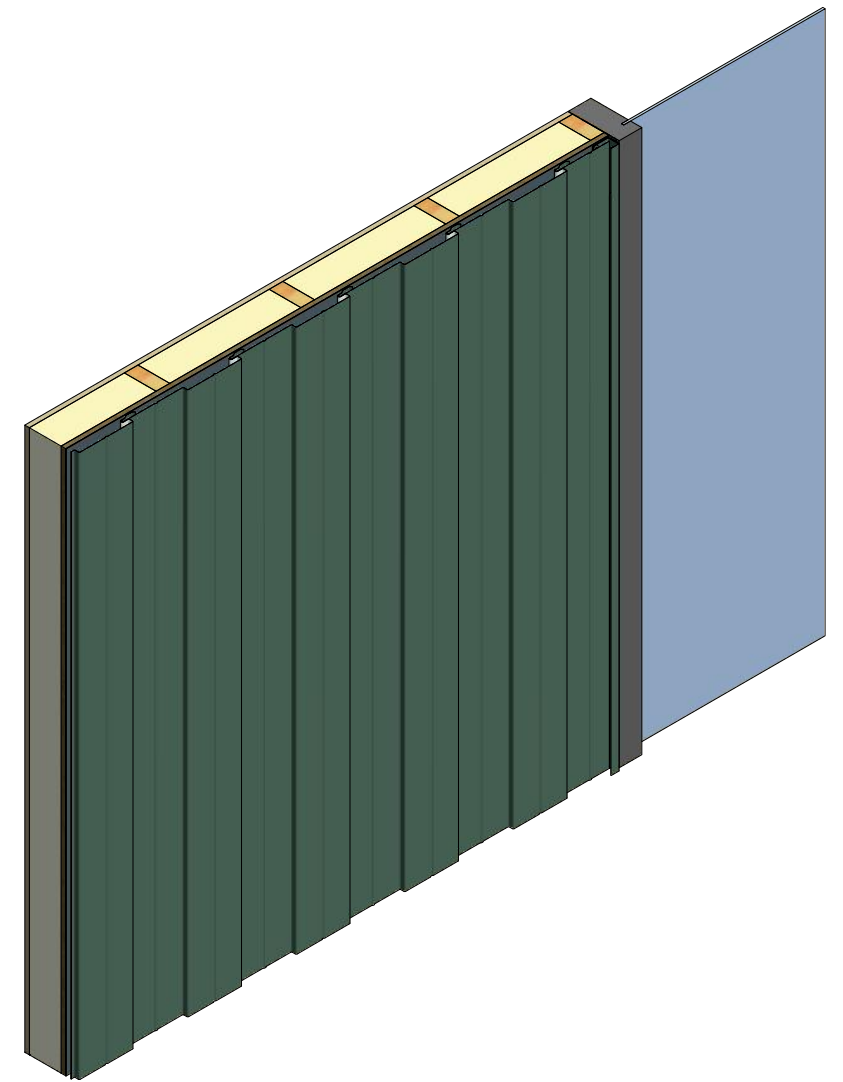
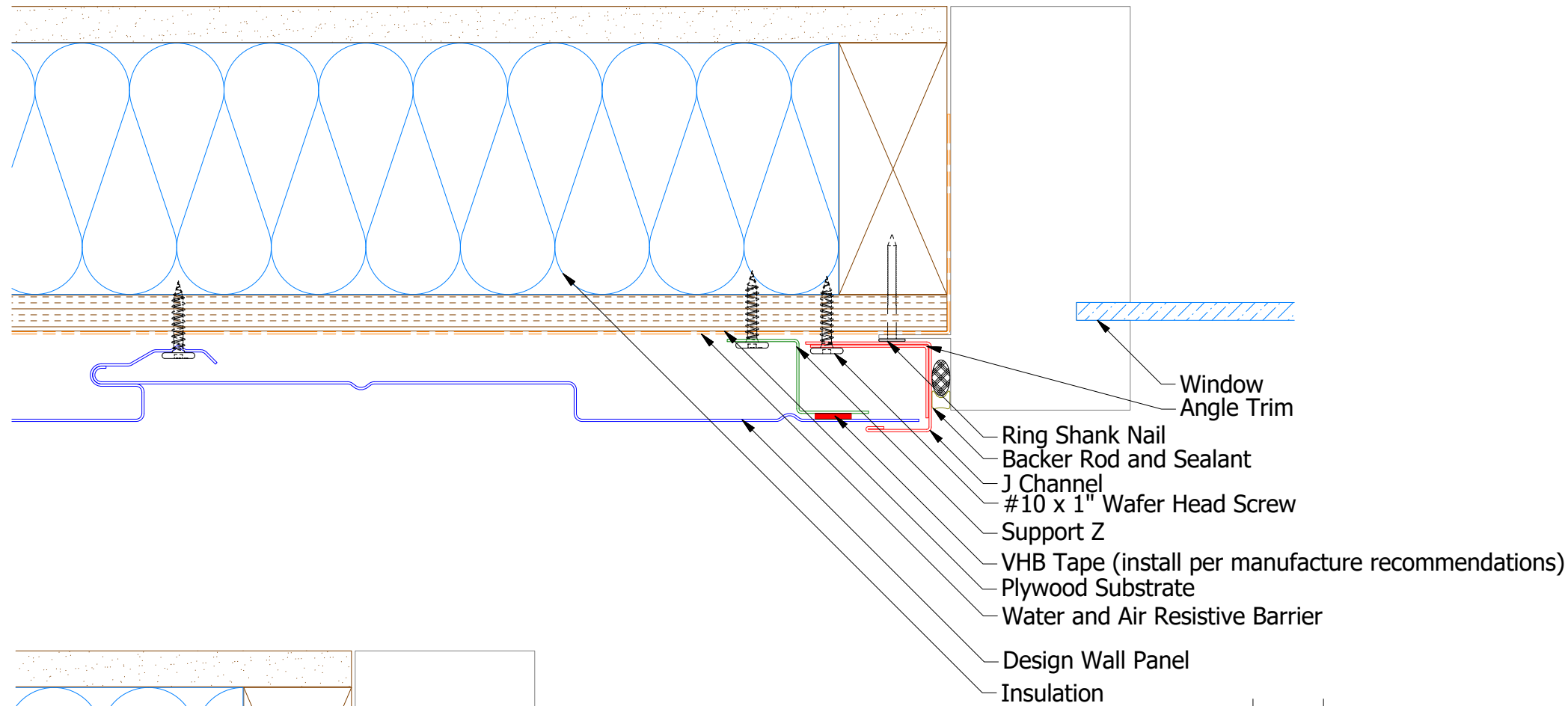
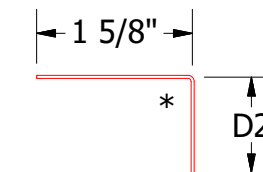


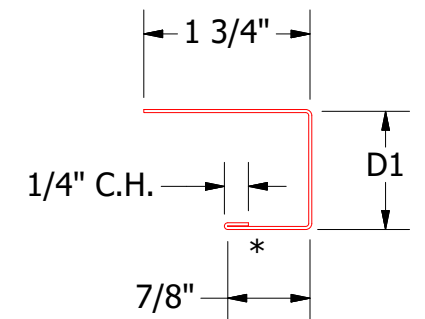
Vertical Panel



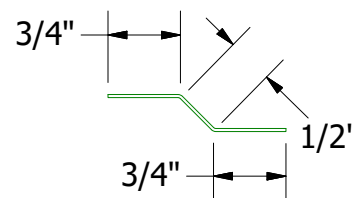
Support Z
 DWA680: D3=1"
 DSA680: D3=1 5/8"



Angle Trim
 DWA680: D2= 1"
 DSA680: D2= 1 3/4"



J Channel
 DWA118: D1= 1 1/8"
 DSA178: D1= 1 7/8"



DSA975/DWA975 - Joggle Cleat

Note: * denotes color side.

Note: stainless steel pop rivets maybe needed along with VHB tape for longer panels.

REV. NO.	DATE	DESCRIPTION OF REVISION	BY	APP	TITLE	DWG. NO.	DR	DATE	
02	7/19/2021	Changed Pop Rivets to VHB Tape	DMR		Design Wall Jamb Window Flange Detail		MBP	7/27/2018	
01	11/6/2019	Updated SKU # for Angle Trim	KRK				APP	DATE	
							SH. SIZE	B	SCALE


ATAS INTERNATIONAL, INC
 Allentown PA
 610-395-8445
 Mesa AZ
 480-558-7210