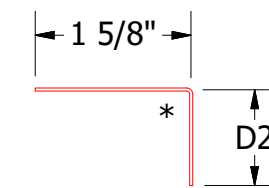
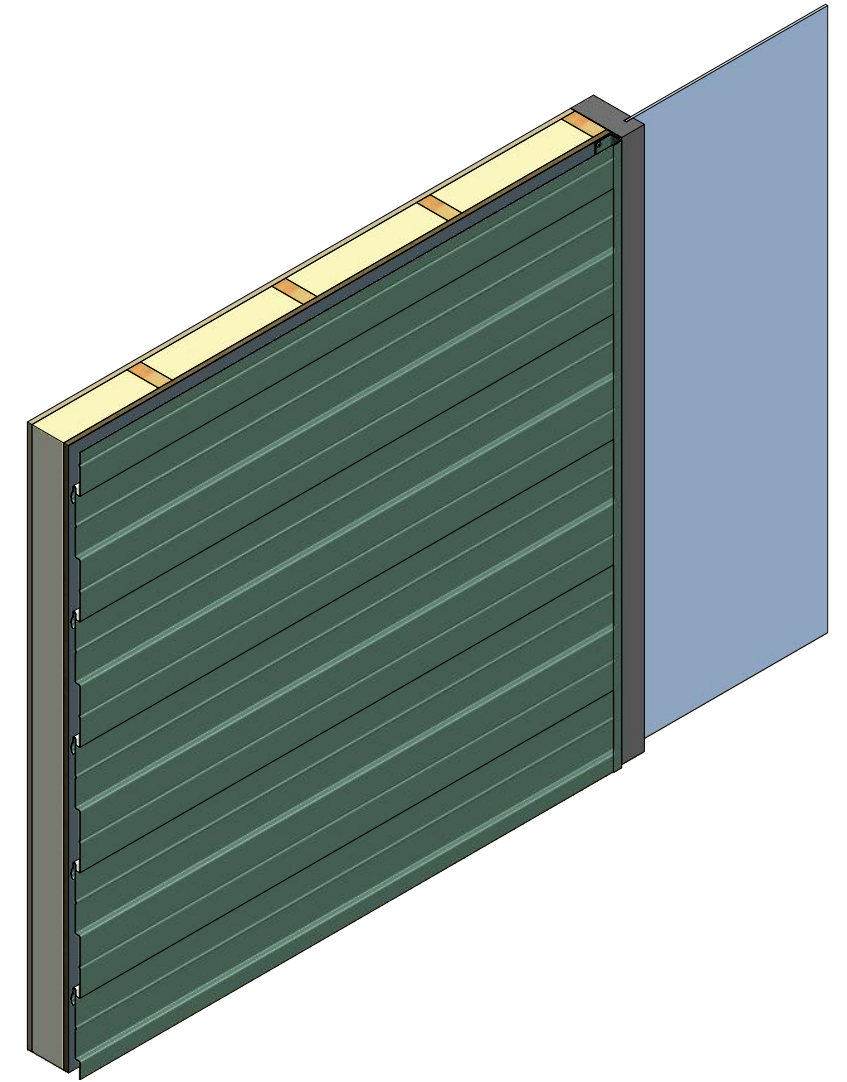
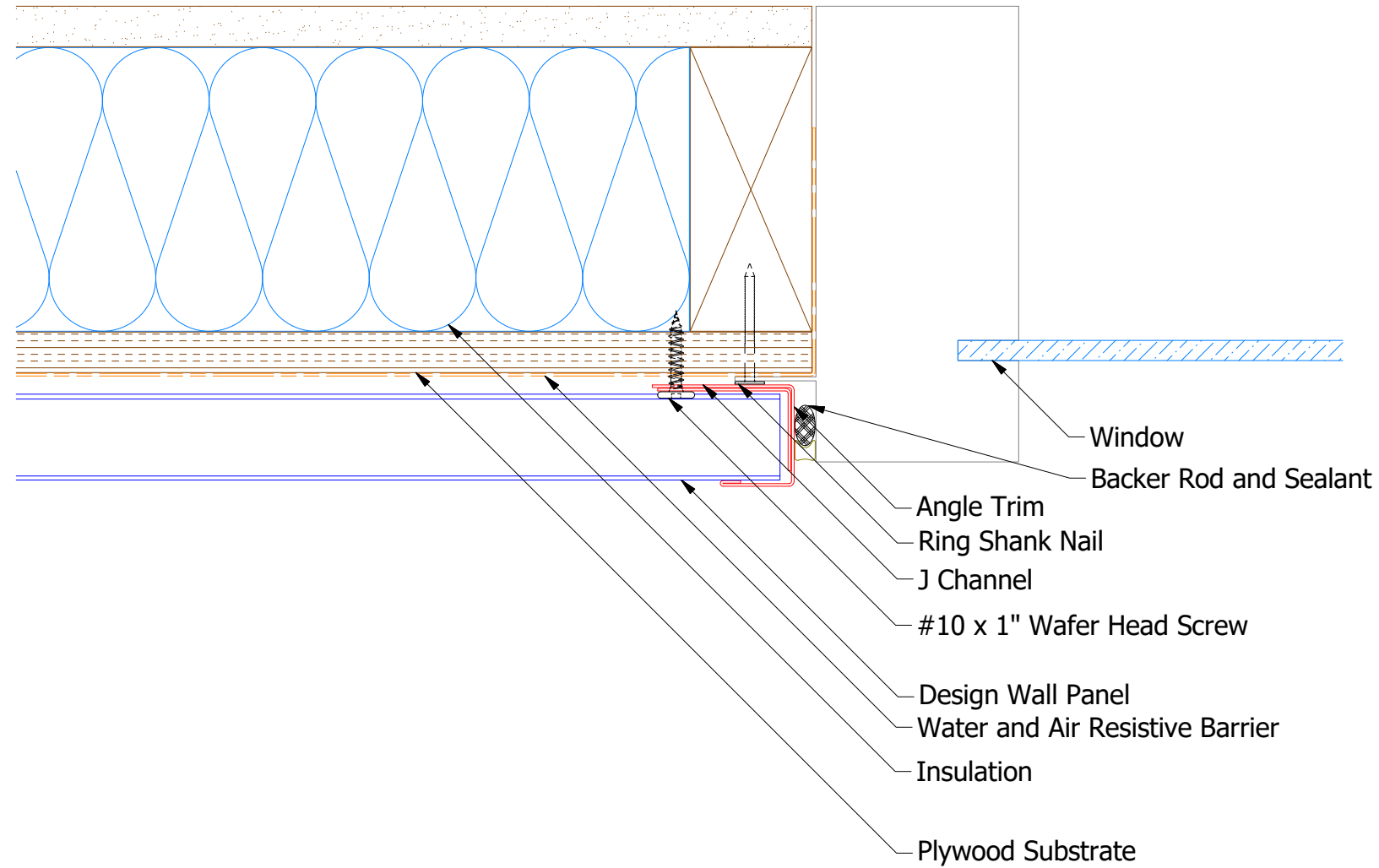
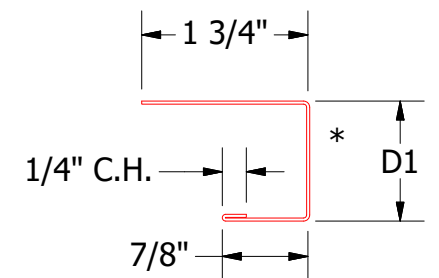


Horizontal Panel

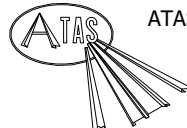


Angle Trim
 DWA680: D2= 1"
 DSA680: D2= 1 3/4"



J Channel
 DWA118: D1= 1 1/8"
 DSA178: D1= 1 7/8"

Note: * denotes color side.

| | | | | | | | |
|---|-----------|---------------------------------------|-----|-----|----------|----------|-----------|
|  ATAS INTERNATIONAL, INC Allentown PA 610-395-8445 Mesa AZ 480-558-7210 | | TITLE | | | | | |
| | | Design Wall Jamb Window Flange Detail | | | | | |
| REV. NO. | DATE | DESCRIPTION OF REVISION | BY | APP | DWG. NO. | DR | DATE |
| 02 | 7/19/2021 | Changed Pop Rivets to VHB Tape | DMR | | | MBP | 7/27/2018 |
| 01 | 11/6/2019 | Updated SKU # for Angle Trim | KRK | | | | |
| | | | | | MATERIAL | SH. SIZE | SCALE |
| | | | | | | B | X:X |