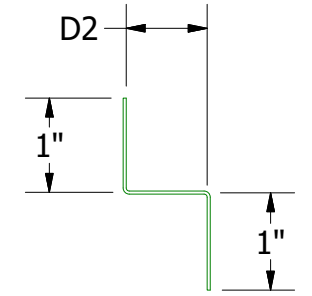
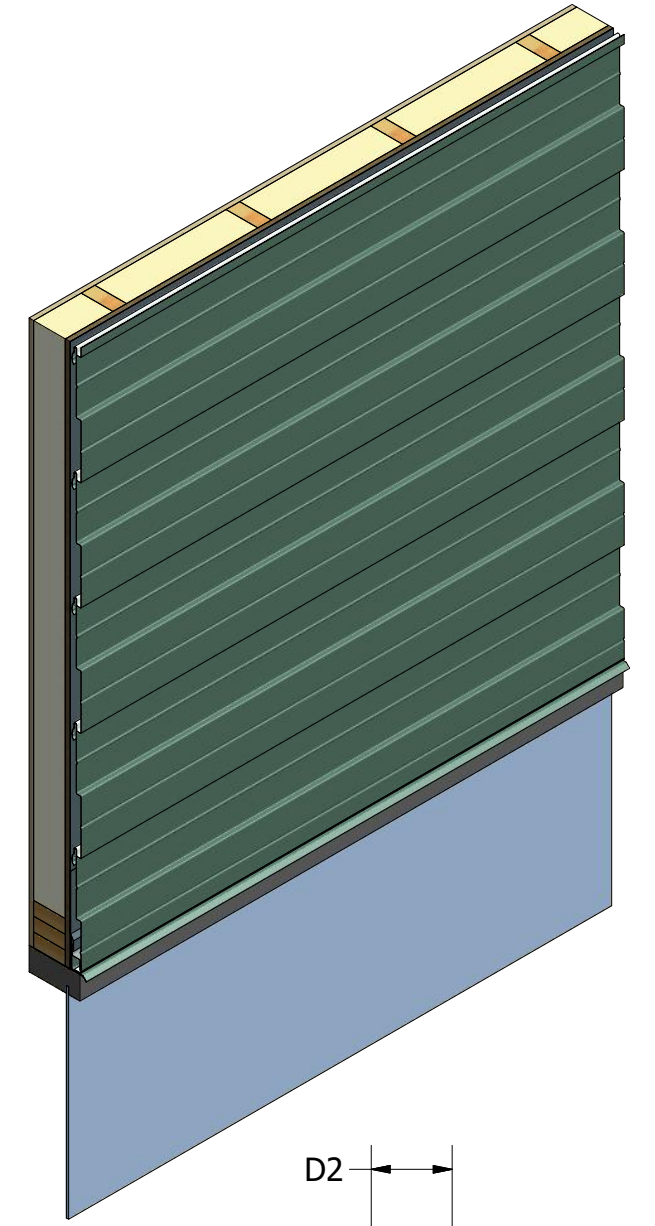
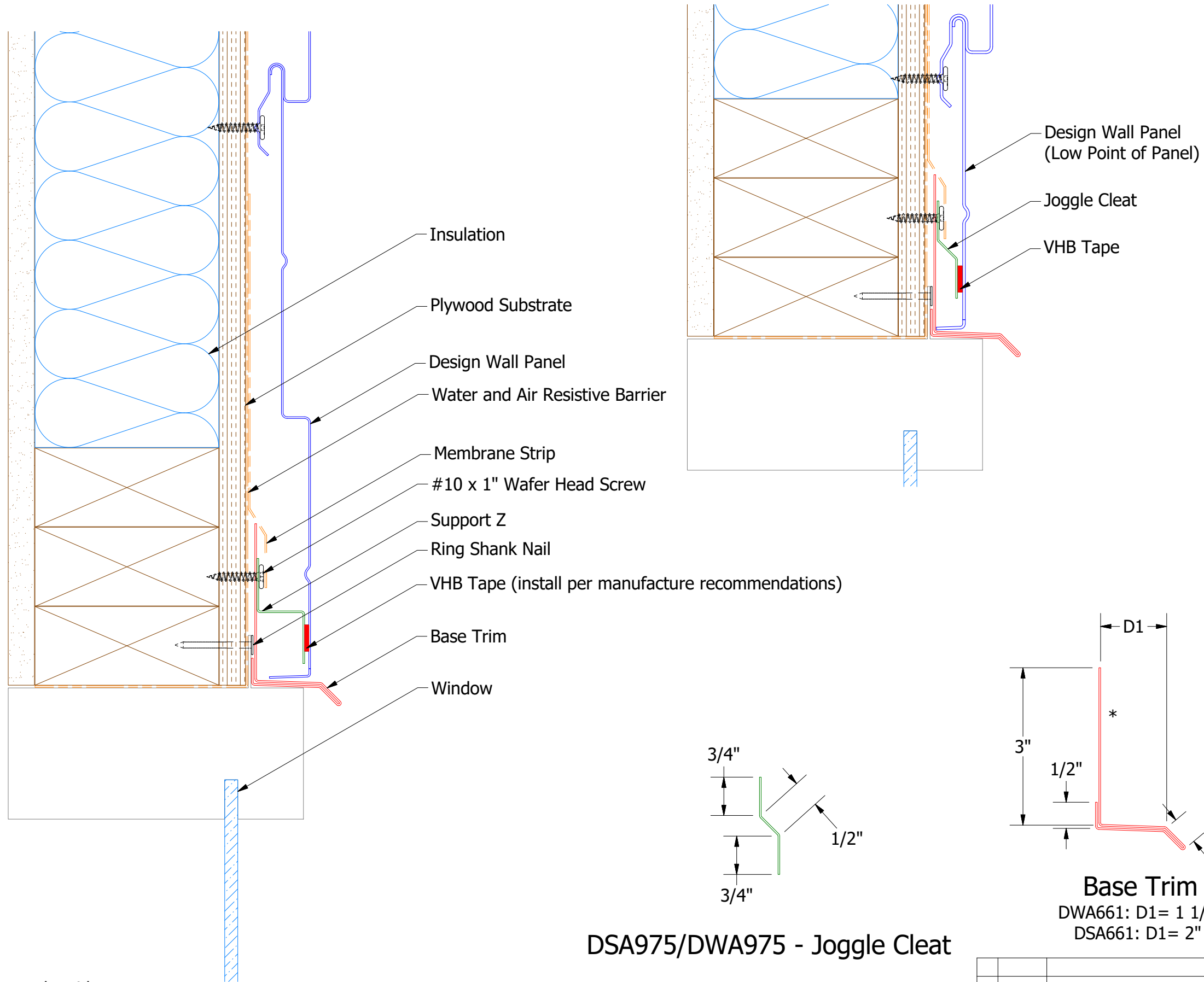
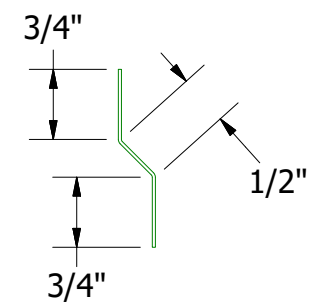


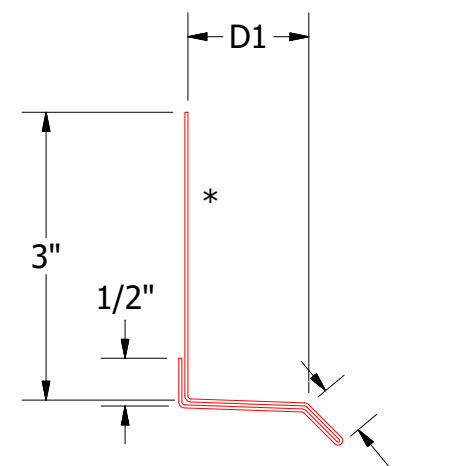
Horizontal Panel



Support Z
DWA681: D2=1"
DSA681:D2=1 5/8"



DSA975/DWA975 - Joggle Cleat



Base Trim
DWA661: D1= 1 1/4"
DSA661: D1= 2"

Note: * denotes color side.
Note: stainless steel pop rivets maybe needed along with VHB tape for longer panels.

		ATAS INTERNATIONAL, INC Allentown PA 610-395-8445 Mesa AZ 480-558-7210	
		TITLE Design Wall Head Window Flange Detail	
DWG. NO.	DR	DATE	DATE
1	MBP	7/27/2018	
REV. NO.	APP	DATE	
1	APP		
DATE	DESCRIPTION OF REVISION	BY	APP
7/16/2021	Changed Pop Rivets to VHB Tape	DMR	
		SH. SIZE	SCALE
		B	X:X
