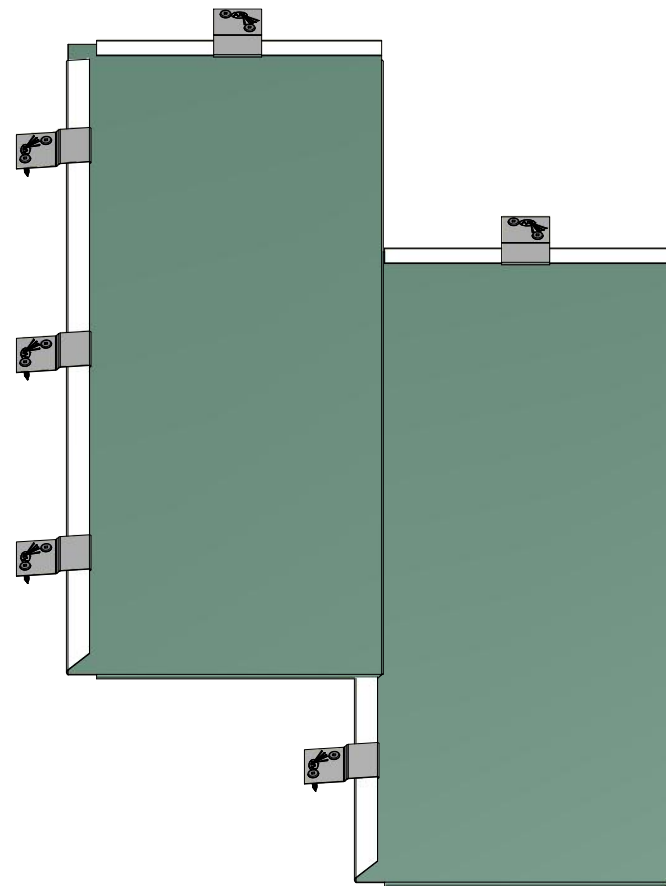
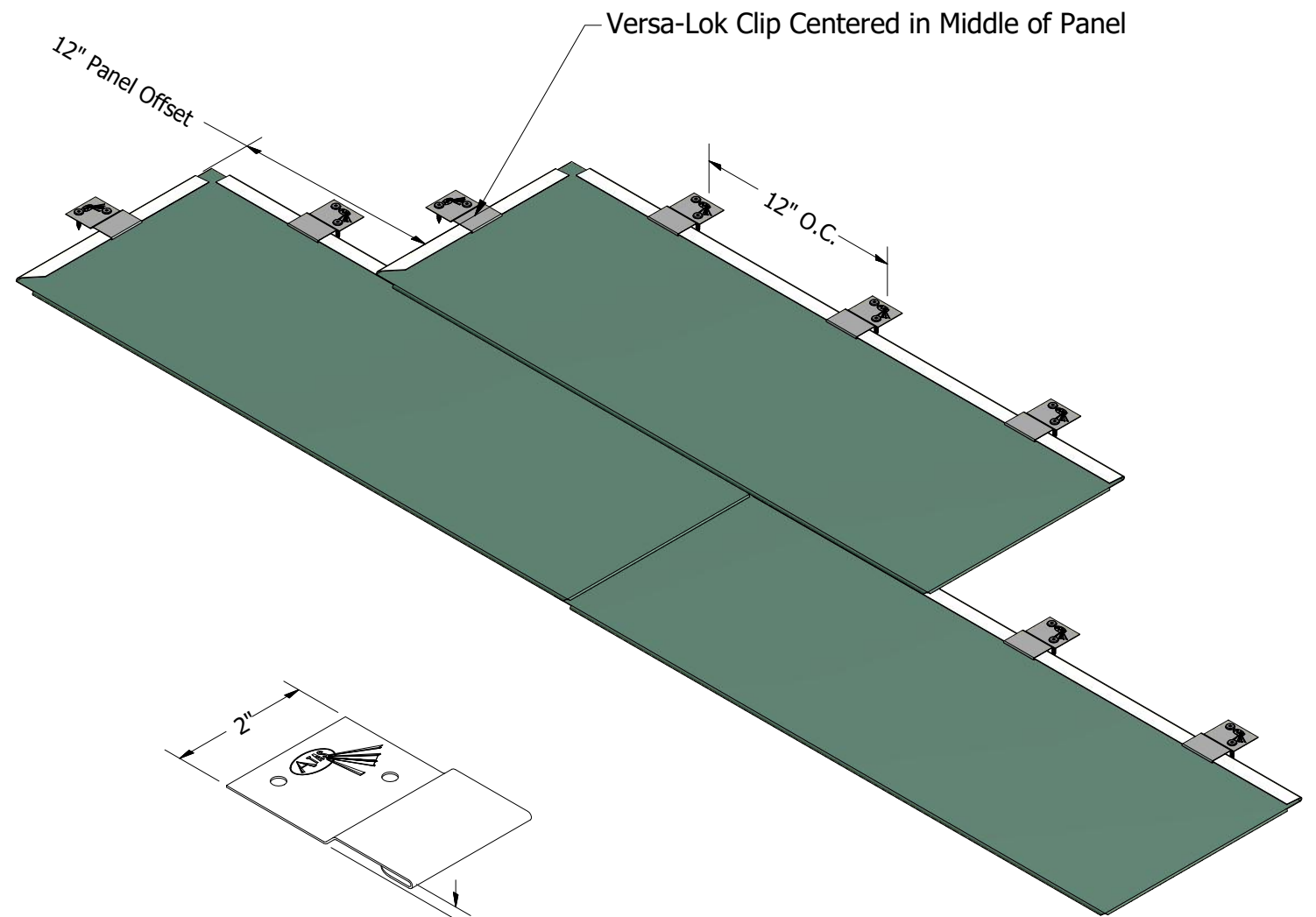


Vertical Versa-Lok Panel
(standard right-to-left panel)

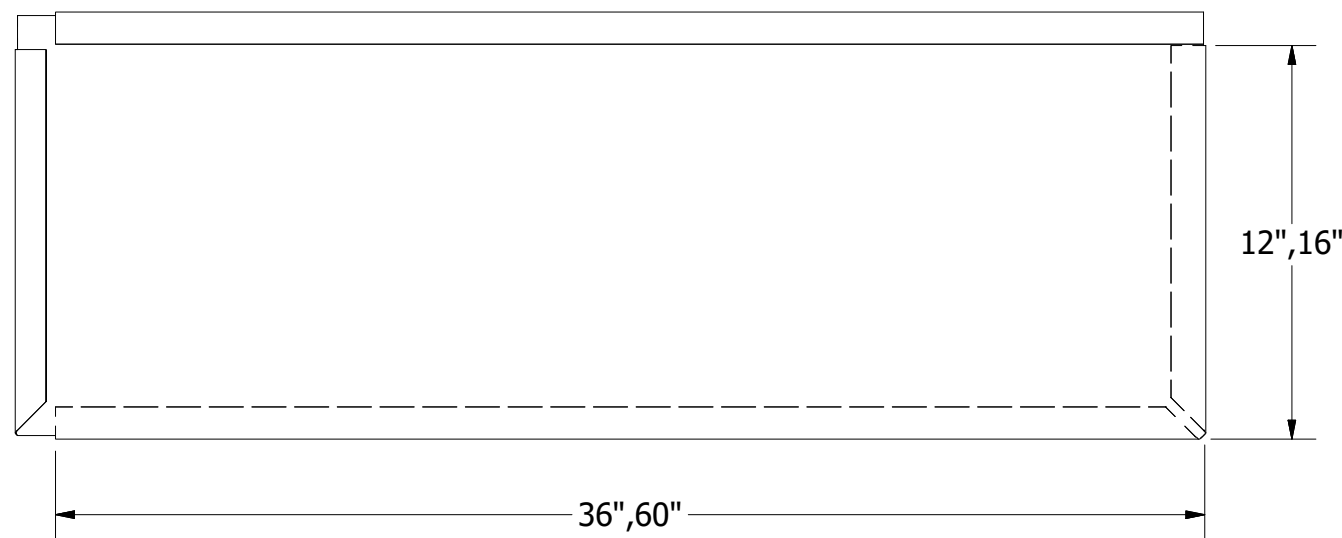


Vertical Installation



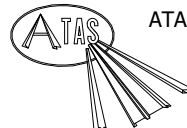
Horizontal Installation

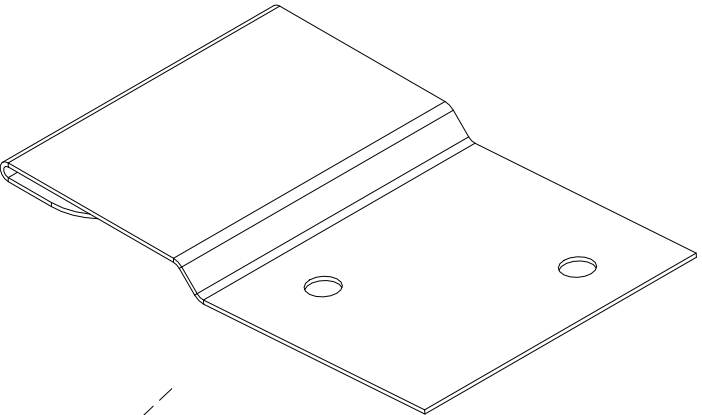
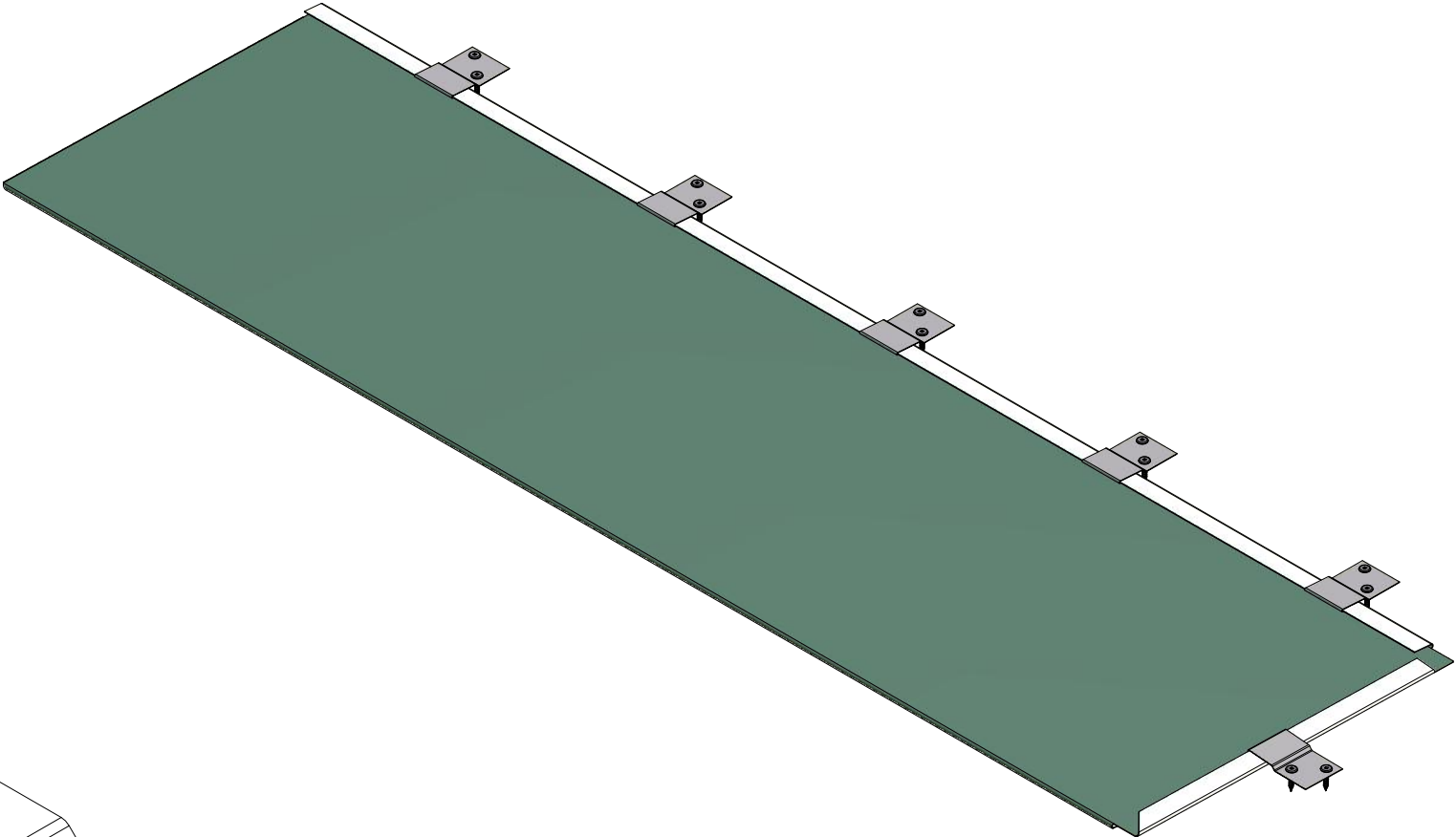
Standard Clip Materials:
0.027" Painted Metallic Coated Steel
24 Gauge Grade 304 Stainless Steel



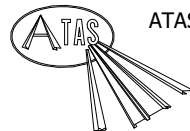
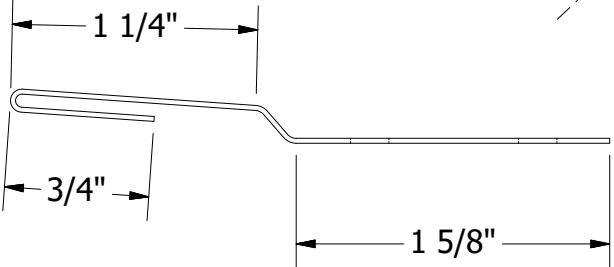
Horizontal Versa-Lok Panel
(standard right-to-left panel)

REV. NO.	DATE	DESCRIPTION OF REVISION	BY	APP
01	3/9/2021	Updated Panel Notching	KRK	

 ATAS INTERNATIONAL, INC Allentown PA 610-395-8445 Mesa AZ 480-558-7210		TITLE	
		Versa-Lok Panel Detail	
DWG. NO.		DR	DATE
		KRK	2/9/2016
MATERIAL		APP	DATE
		DAS	8/8/16
SH. SIZE		B	SCALE
			X:X



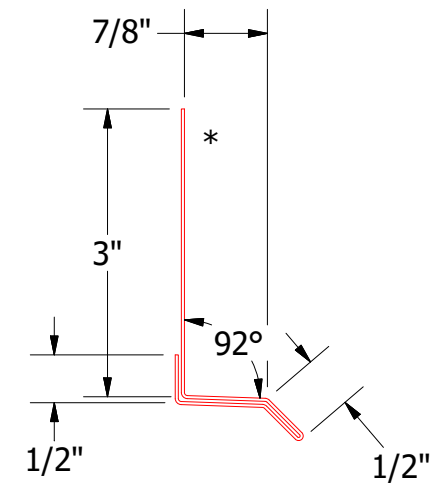
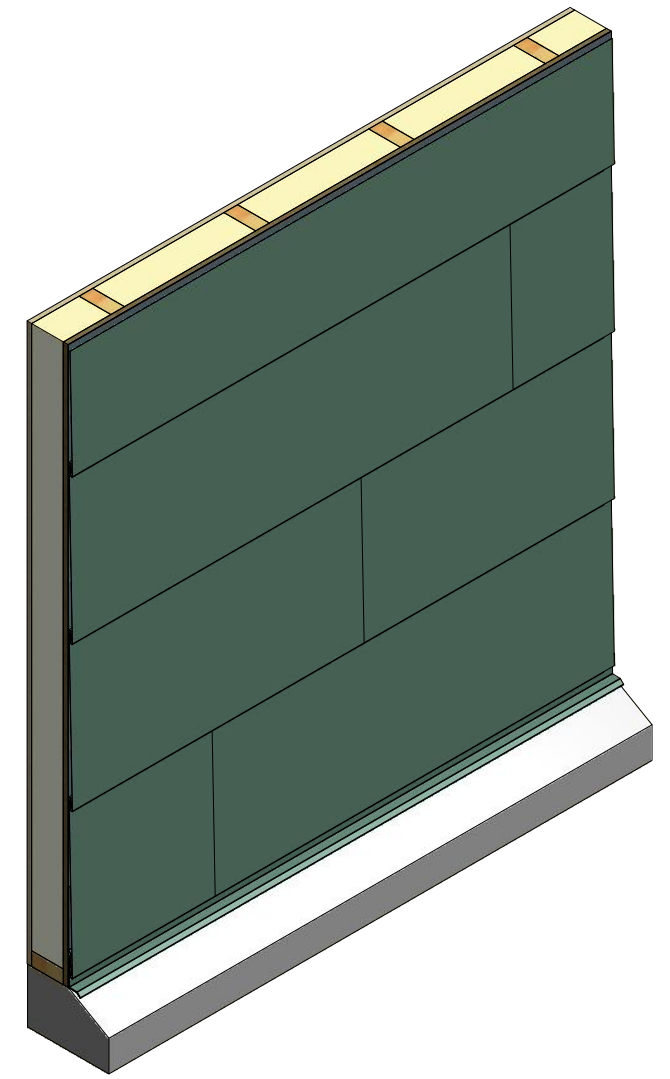
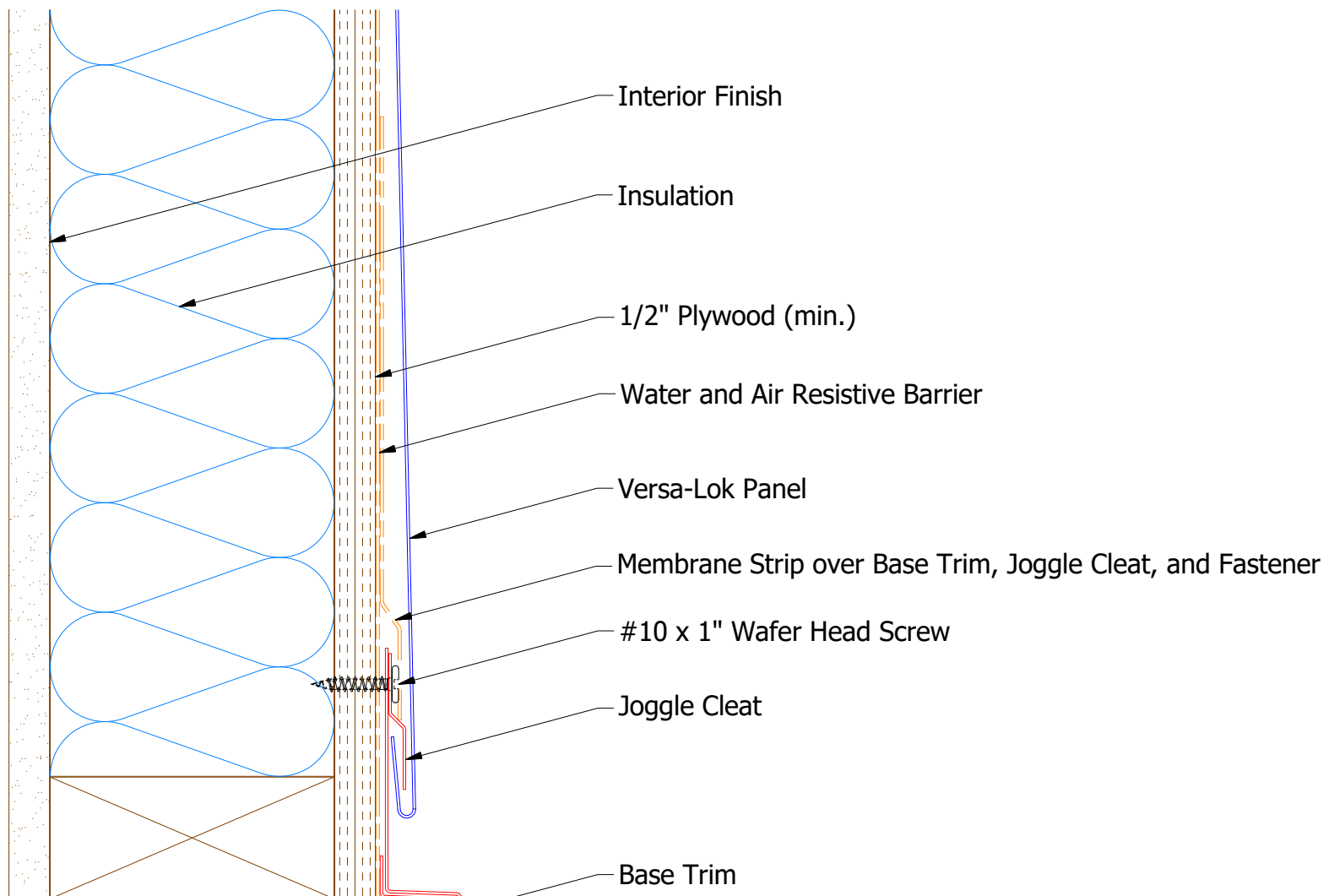
Versa-Lok Clip



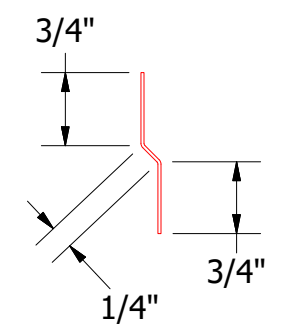
ATAS INTERNATIONAL, INC
 Allentown PA
 610-395-8445
 Mesa AZ
 480-558-7210

TITLE		Versa-Lok Clip Detail		
REV. NO.	DATE	DESCRIPTION OF REVISION	BY	APP
02	3/9/2021	Updated Panel Notching	KRK	
01	9/28/2020	Updated Panel to Show Side Clip	KRK	

DWG. NO.	DR	DATE
	DMR	10/3/2016
MATERIAL	APP	DATE
	SH. SIZE	SCALE
	B	X:X



VLA661 - Base Trim



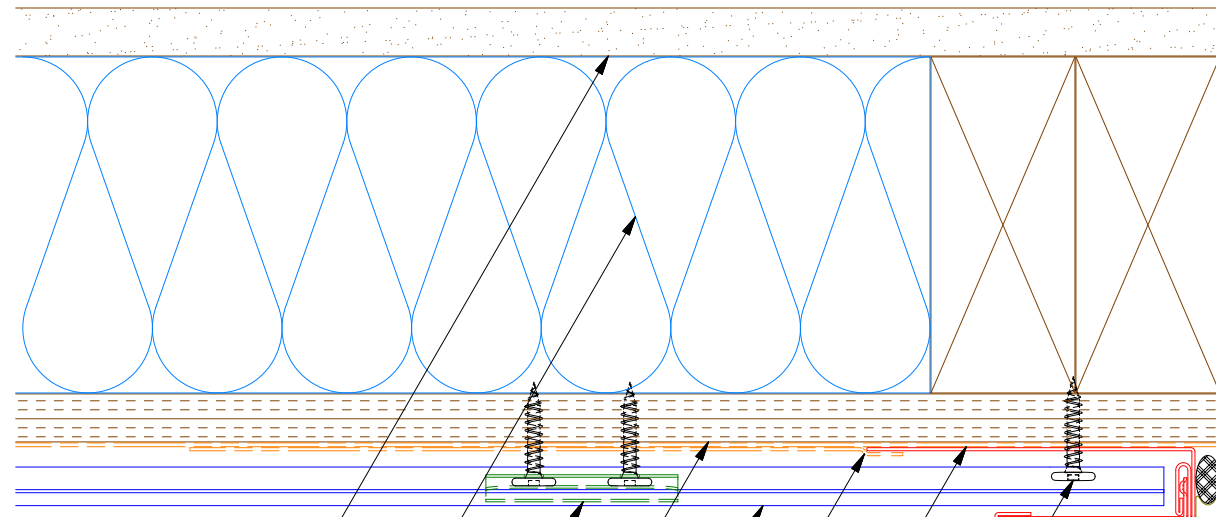
VLA975 - Joggle Cleat

ATAS INTERNATIONAL, INC
 Allentown PA
 610-395-8445
 Mesa AZ
 480-558-7210

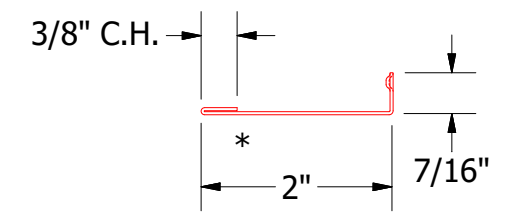
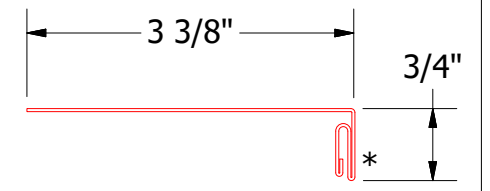
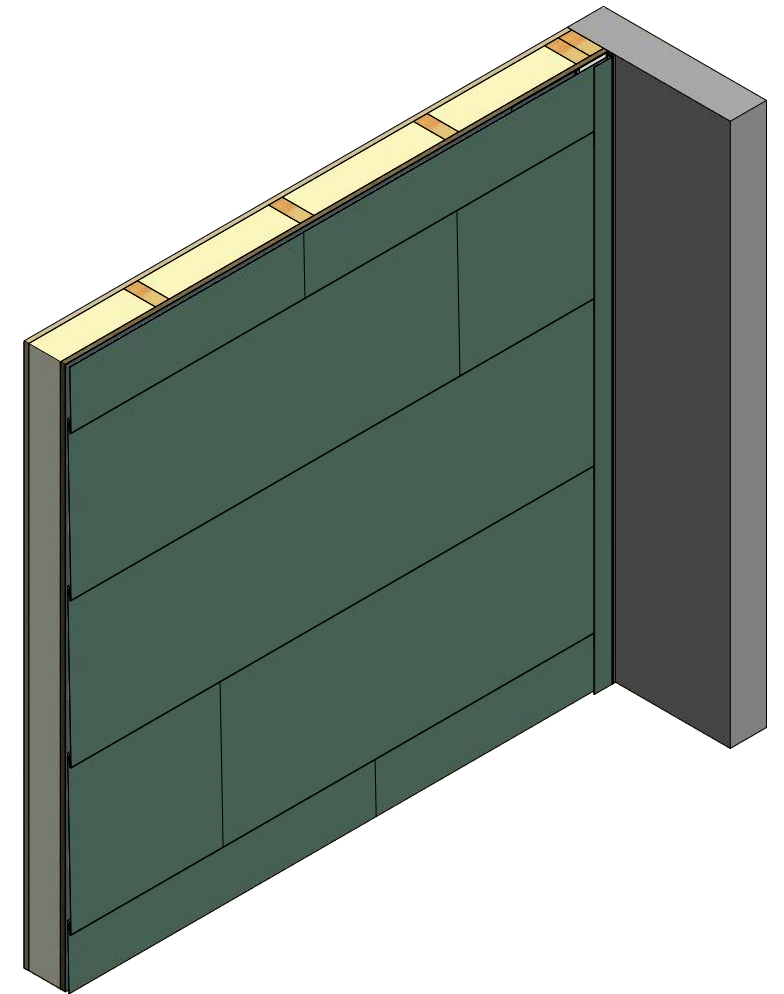
TITLE			Versa-Lok Base Detail		
DWG. NO.		DR	KRK	DATE	2/9/2016
MATERIAL		APP	DAS	DATE	8/8/16
REV. NO.		SH. SIZE	B	SCALE	X:X

Note: * denotes color side.

REV. NO.	DATE	DESCRIPTION OF REVISION	BY	APP



- Interior Finish
- Insulation
- Versa-Lok Clip
- 1/2" Plywood (min.)
- Versa-Lok Panel
- Membrane Strip over Snap J Base
- Water and Air Resistive Barrier
- #10 x 1" Wafer Head Screw
- Snap J Channel
- Backer Rod and Sealant



VLA039 - Snap J Base

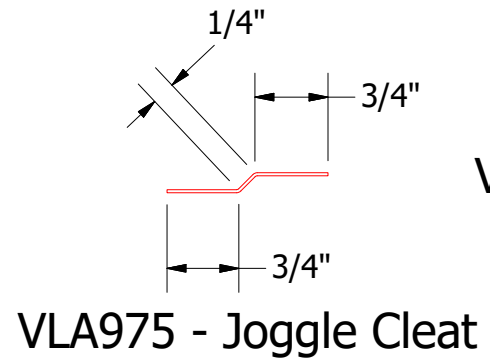
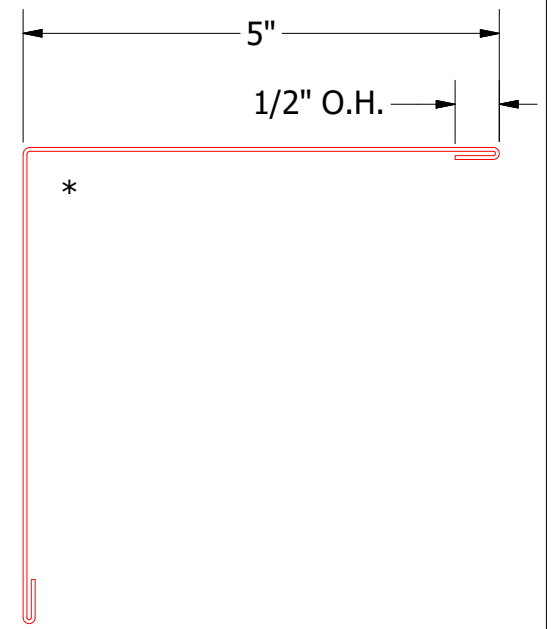
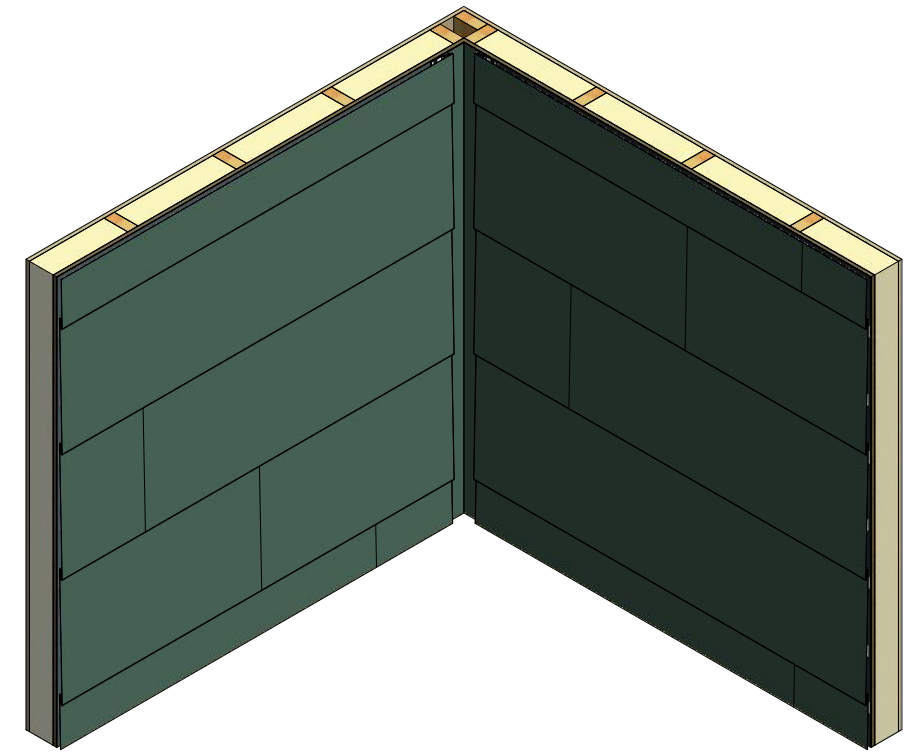
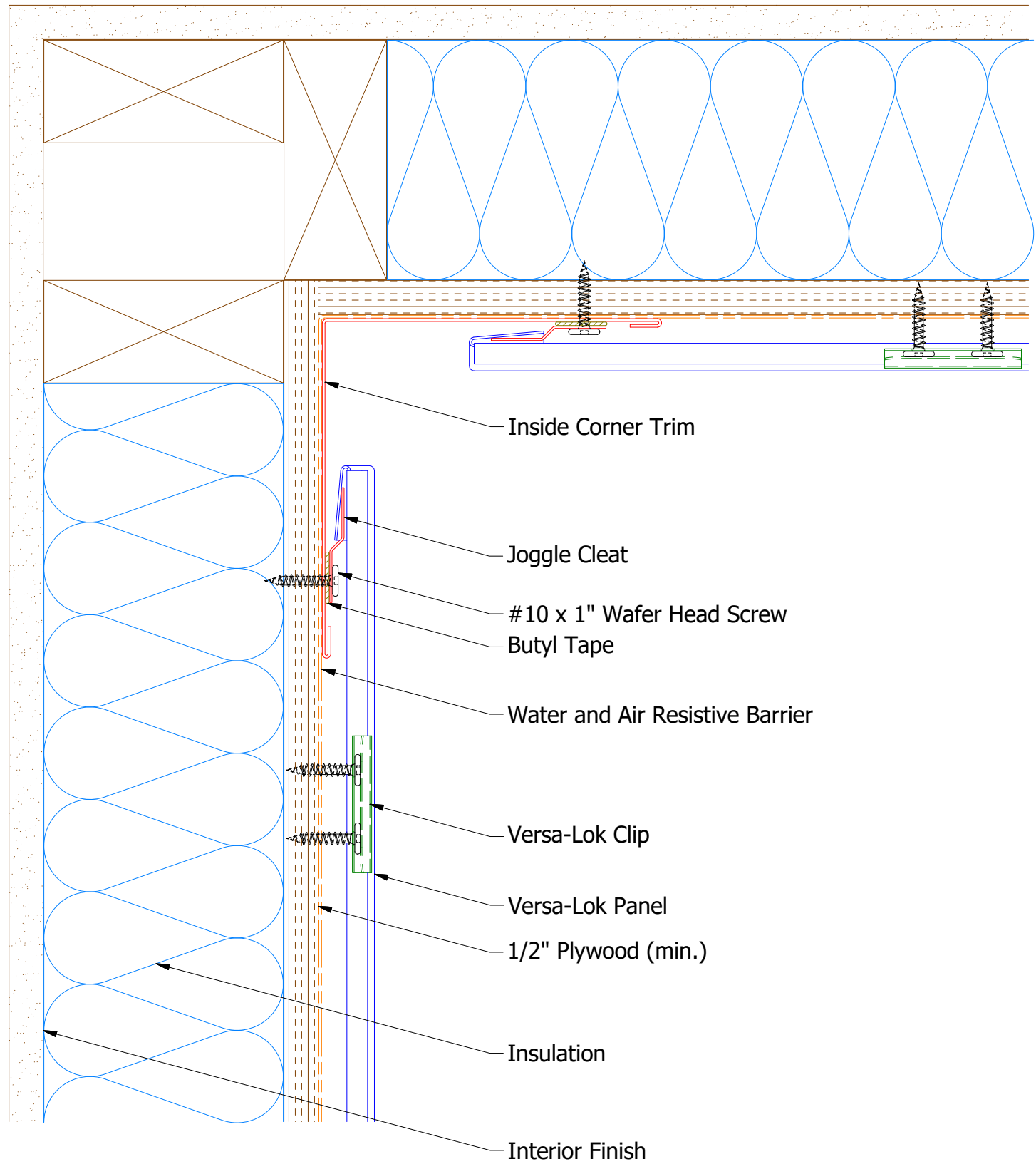
UNS200 - Snap J Cover

ATAS ATAS INTERNATIONAL, INC
 Allentown PA
 610-395-8445
 Mesa AZ
 480-558-7210

TITLE			Versa-Lok Endwall Detail		
DWG. NO.		DR	KRK	DATE	2/9/2016
REV. NO.		APP	DAS	DATE	8/8/16
MATERIAL		SH. SIZE	B	SCALE	X:X

REV. NO.	DATE	DESCRIPTION OF REVISION	BY	APP
1	11/17/2020	Updated Snap J Cover SKU and Dimension from 13/16" to 2"	DMR	

Note: * denotes color side.



VLA600 - Inside Corner Cap

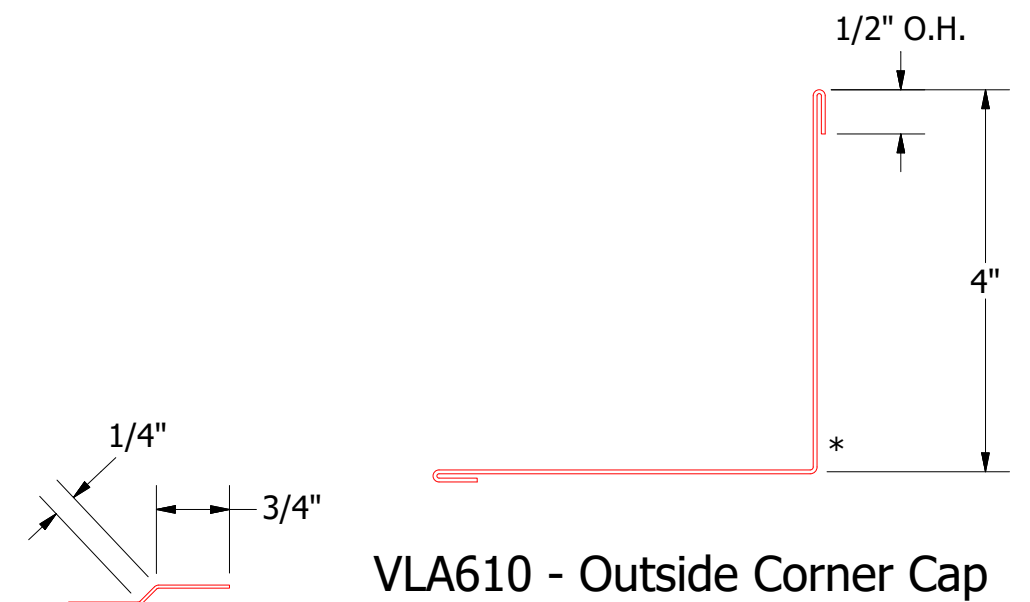
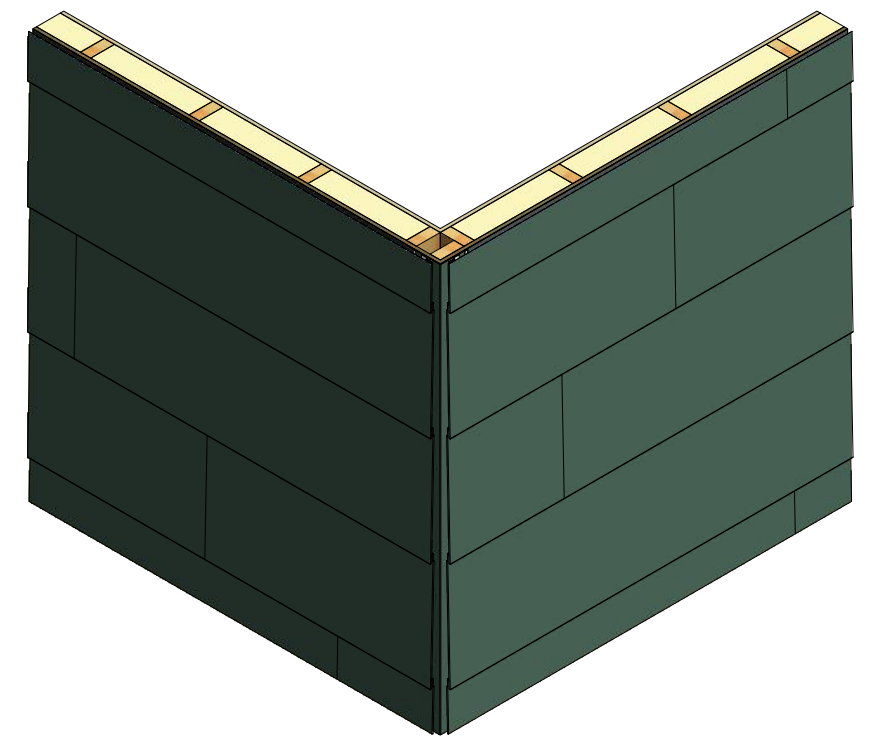
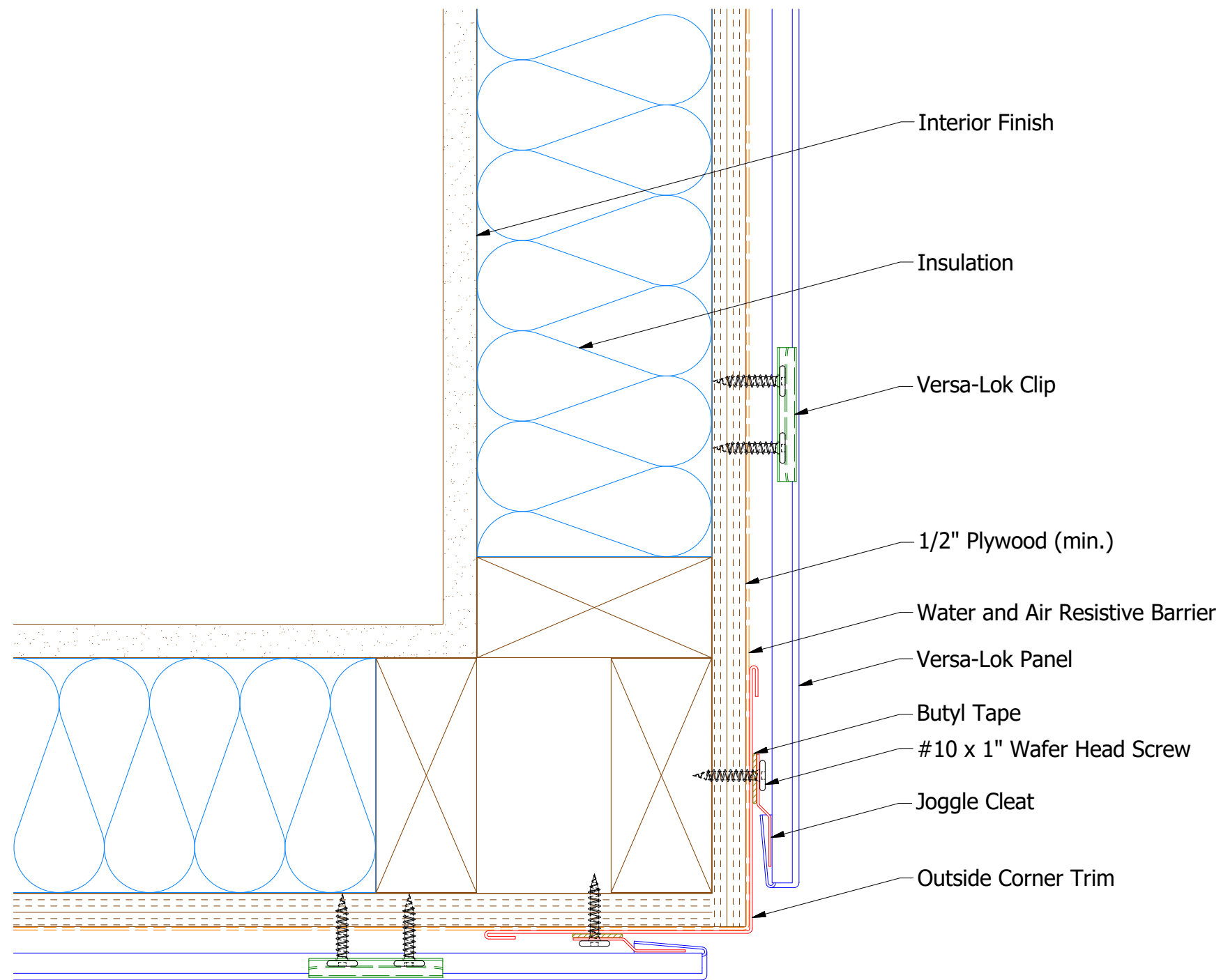
VLA975 - Joggle Cleat


ATAS INTERNATIONAL, INC
 Allentown PA
 610-395-8445
 Mesa AZ
 480-558-7210

TITLE				Versa-Lok Inside Corner Detail	
DWG. NO.		DR	KRK	DATE	2/9/2016
MATERIAL		APP	DAS	DATE	8/8/16
REV. NO.		SH. SIZE	B	SCALE	X:X

Note: * denotes color side.

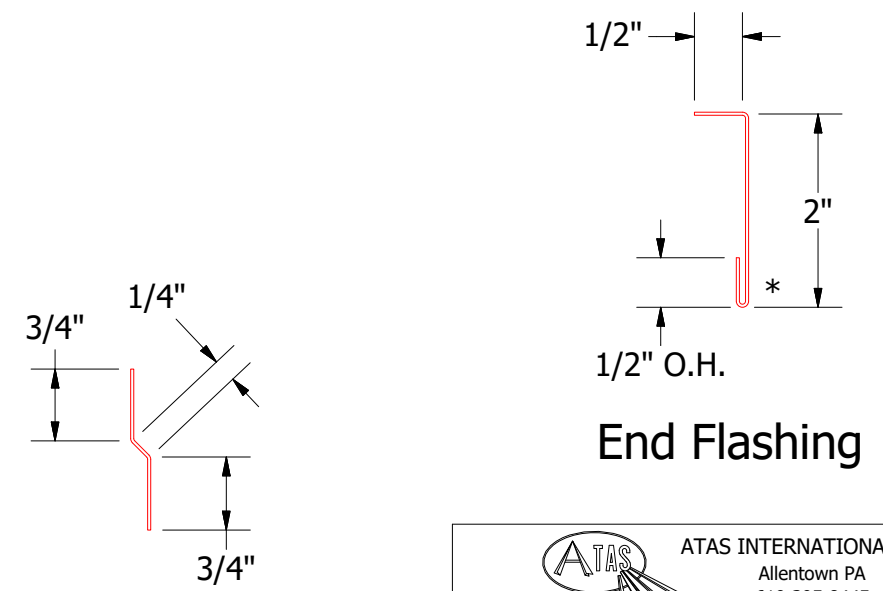
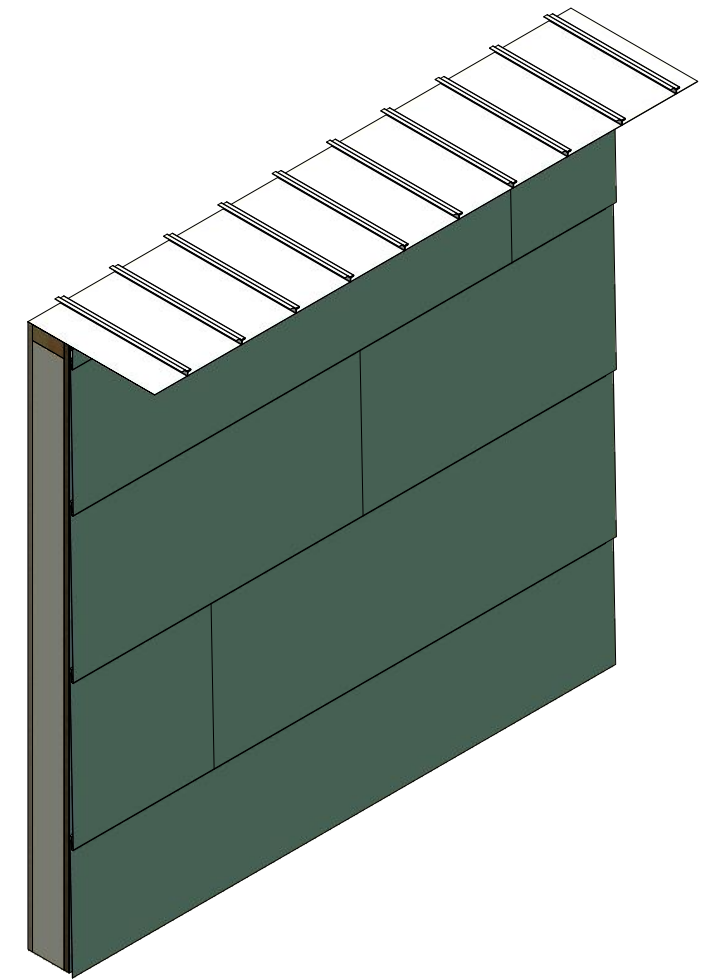
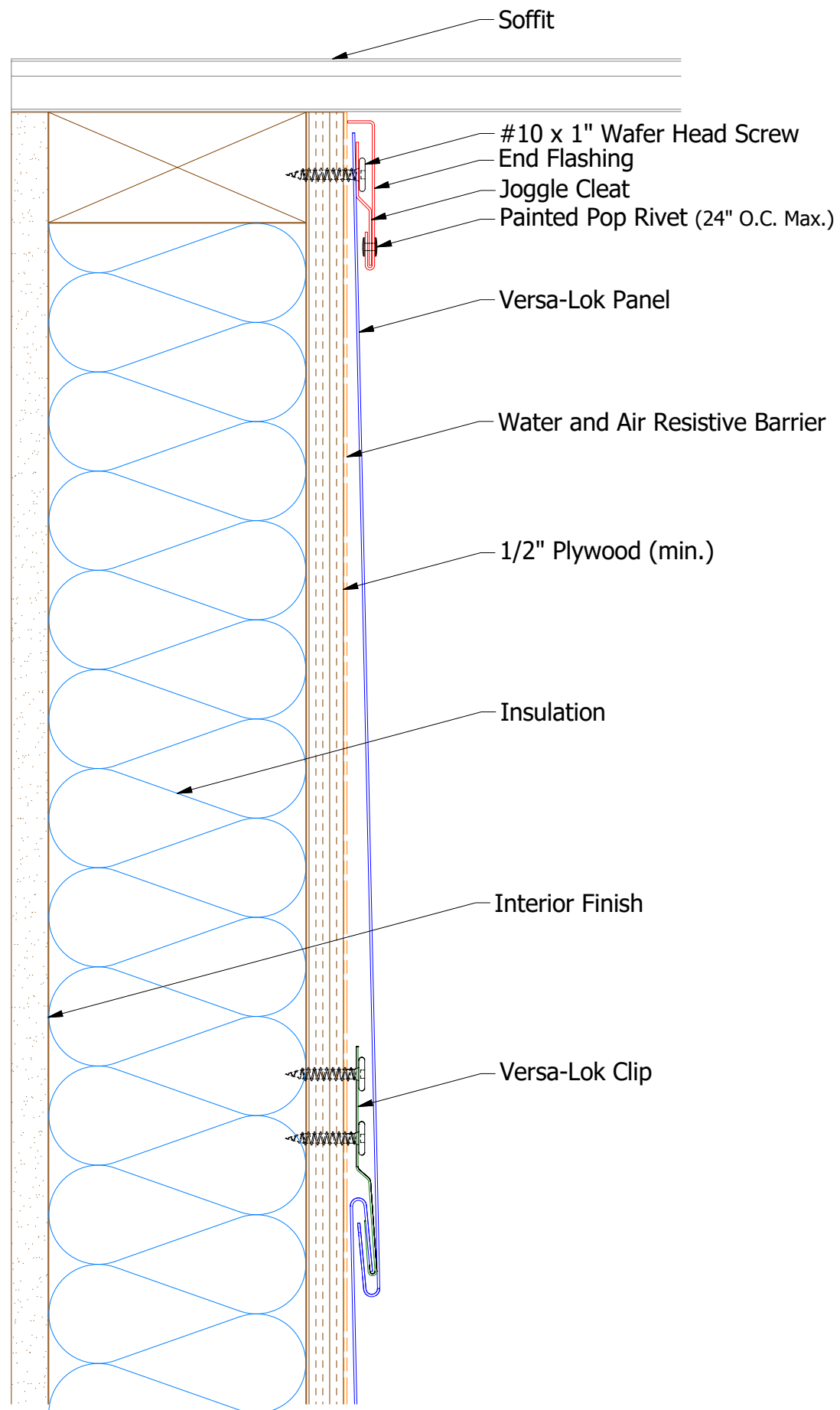
REV. NO.	DATE	DESCRIPTION OF REVISION	BY	APP



Note: * denotes color side.

 ATAS INTERNATIONAL, INC Allentown PA 610-395-8445 Mesa AZ 480-558-7210		TITLE	
		Versa-Lok Outside Corner Detail	
DWG. NO.	DR	DATE	
	KRK	2/8/2016	
APP	DAS	DATE	
		8/8/16	
MATERIAL	SH. SIZE	SCALE	
	B	X:X	

REV. NO.	DATE	DESCRIPTION OF REVISION	BY	APP



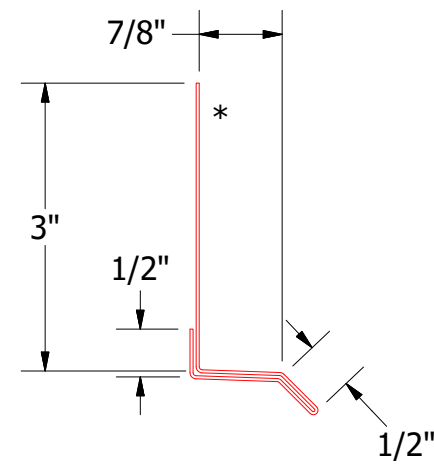
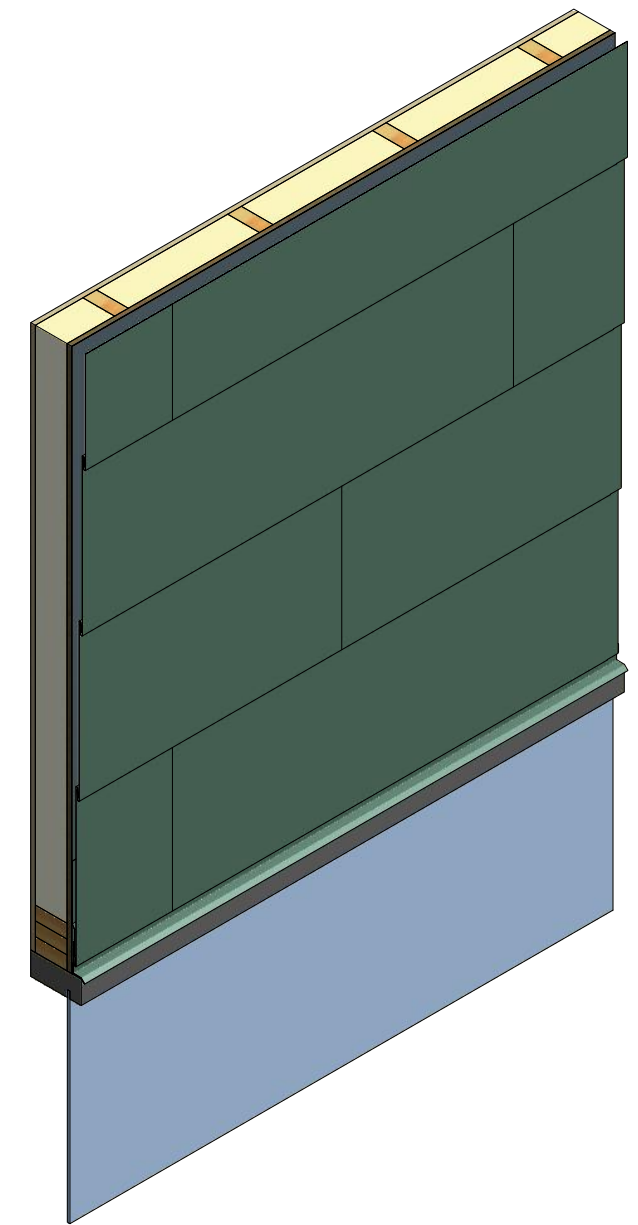
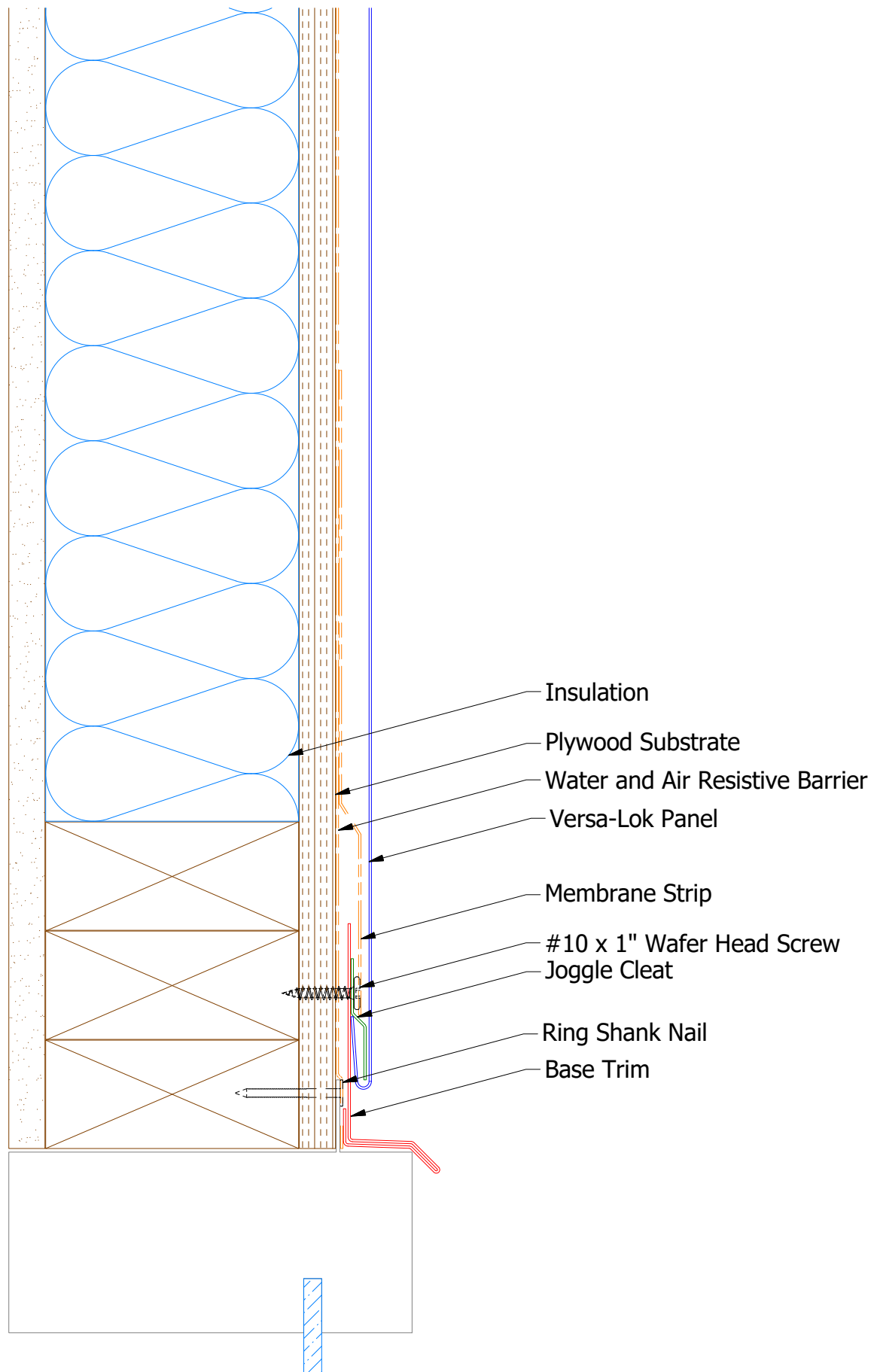
VLA975 - Joggle Cleat

ATAS ATAS INTERNATIONAL, INC
 Allentown PA
 610-395-8445
 Mesa AZ
 480-558-7210

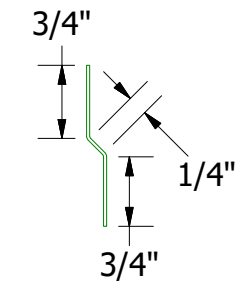
TITLE Versa-Lok Top of Wall Detail

1	11/17/2020	Updated End Flashing Dimension from 13/16" to 2"	DMR	DR	KRK	DATE	2/10/2016
REV. NO.	DATE	DESCRIPTION OF REVISION	BY	APP	DAS	DATE	8/8/16
					SH. SIZE	B	SCALE
							X:X

Note: * denotes color side.




VLA661 - Base Trim



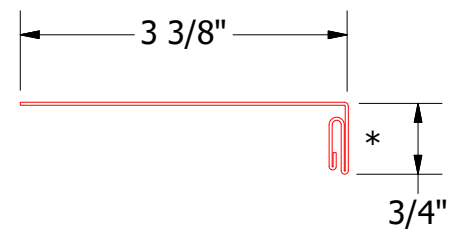
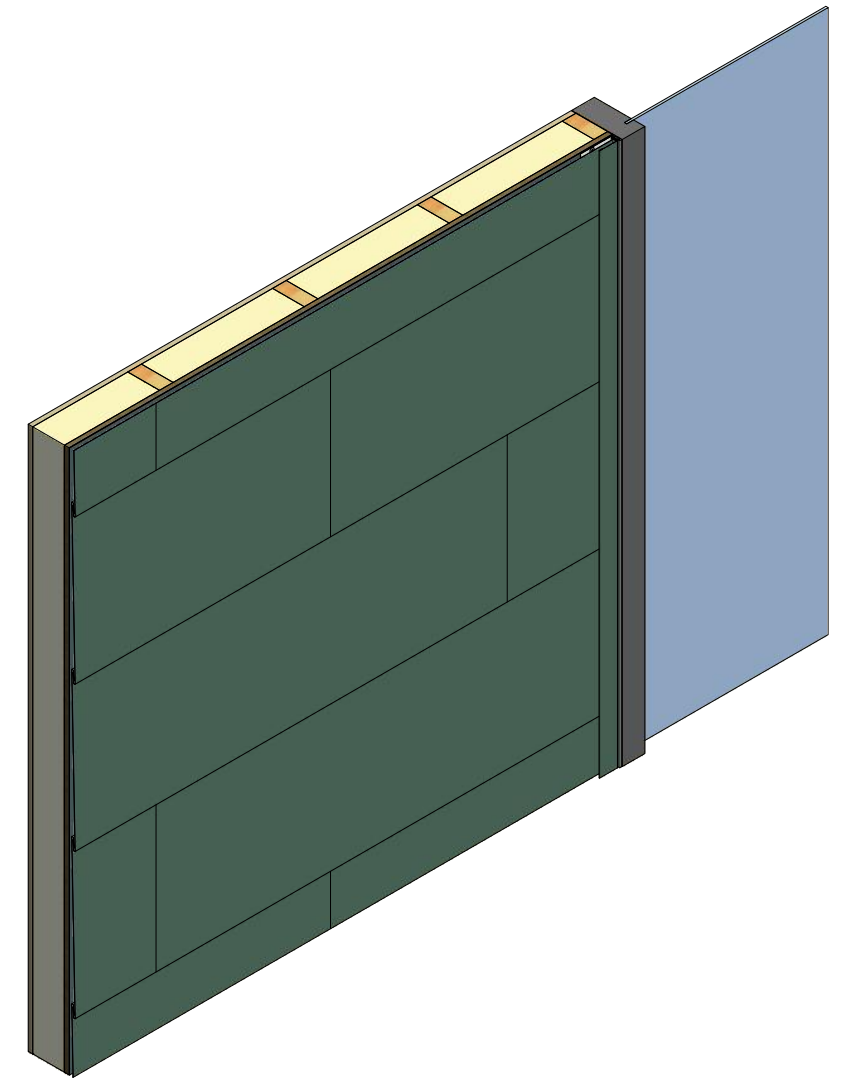
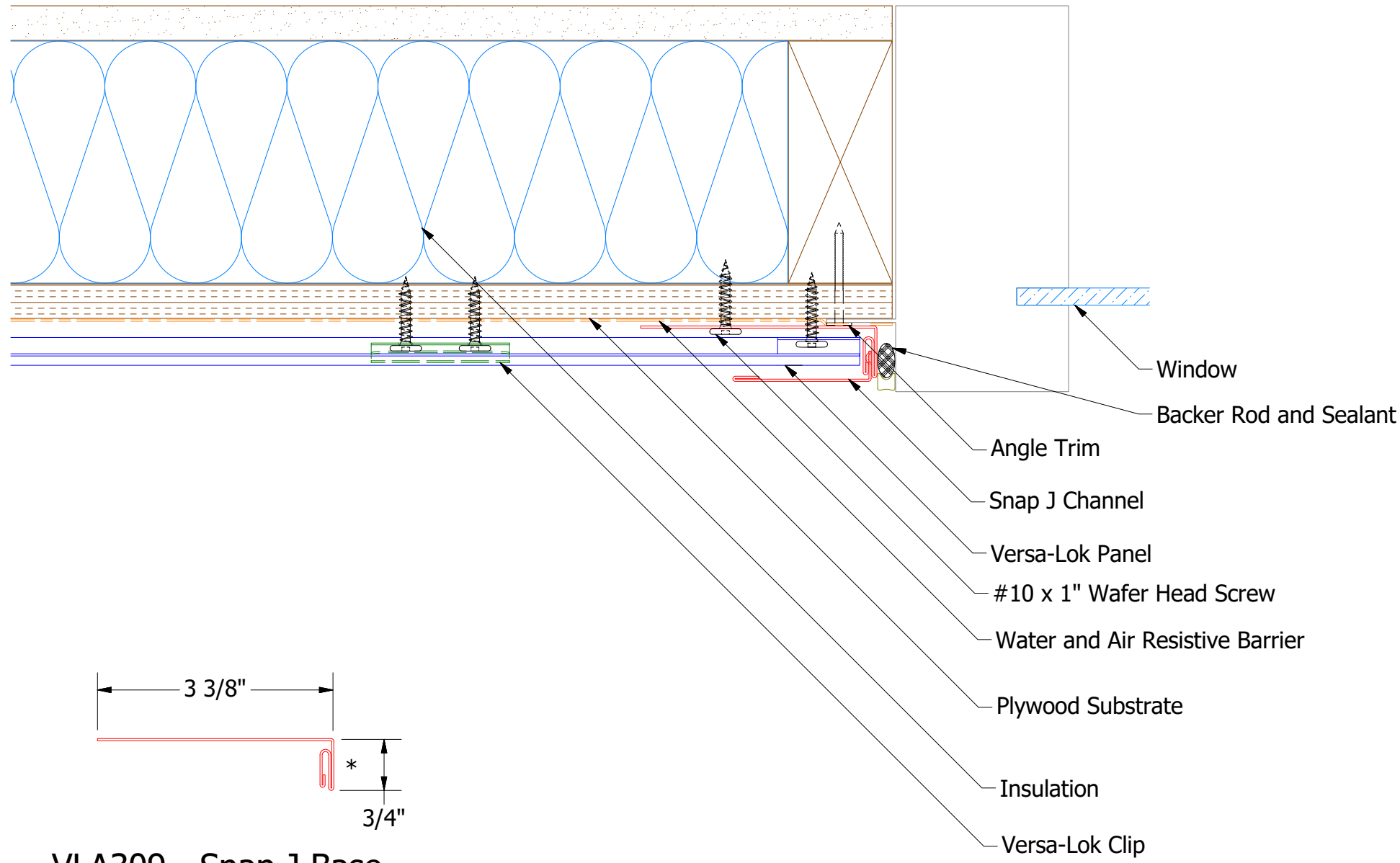
VLA975 - Joggle Cleat

Note: * denotes color side.

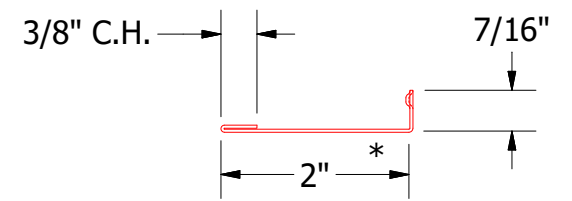

ATAS INTERNATIONAL, INC
 Allentown PA
 610-395-8445
 Mesa AZ
 480-558-7210

Versa Lok Head Window Flange Detail
 DWG. NO. DR MBP DATE 8/1/2018
 APP DATE
 MATERIAL SH. SIZE B SCALE X:X

REV. NO.	DATE	DESCRIPTION OF REVISION	BY	APP



VLA309 - Snap J Base

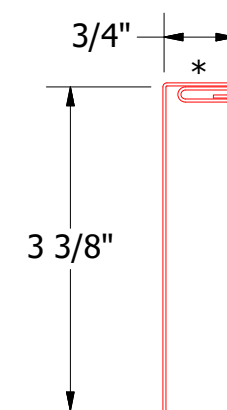
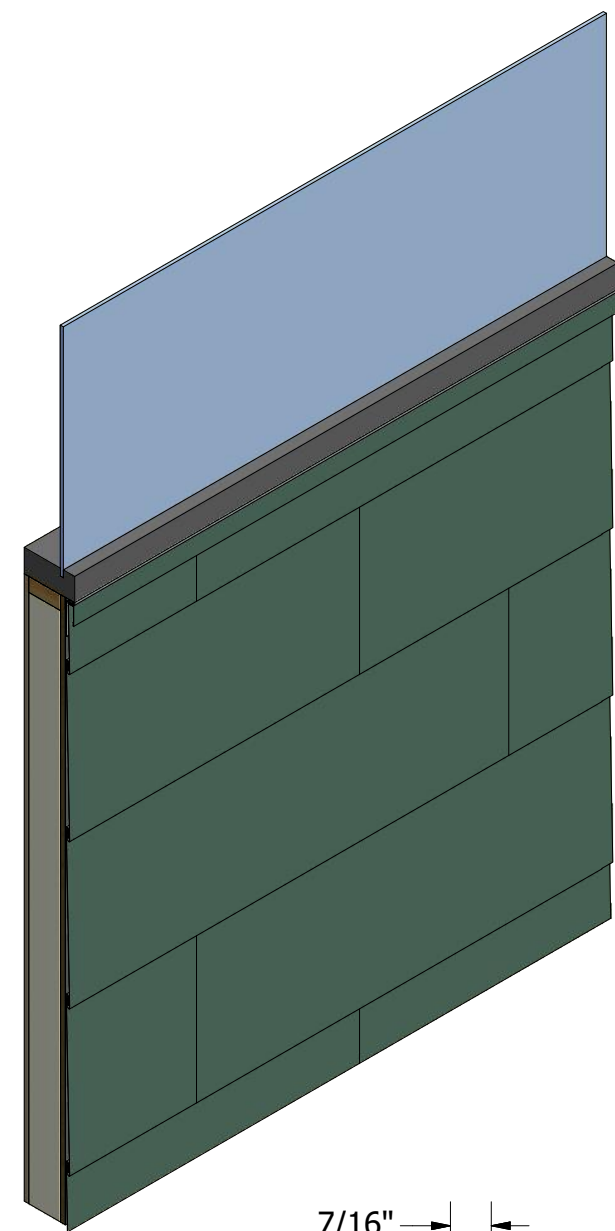
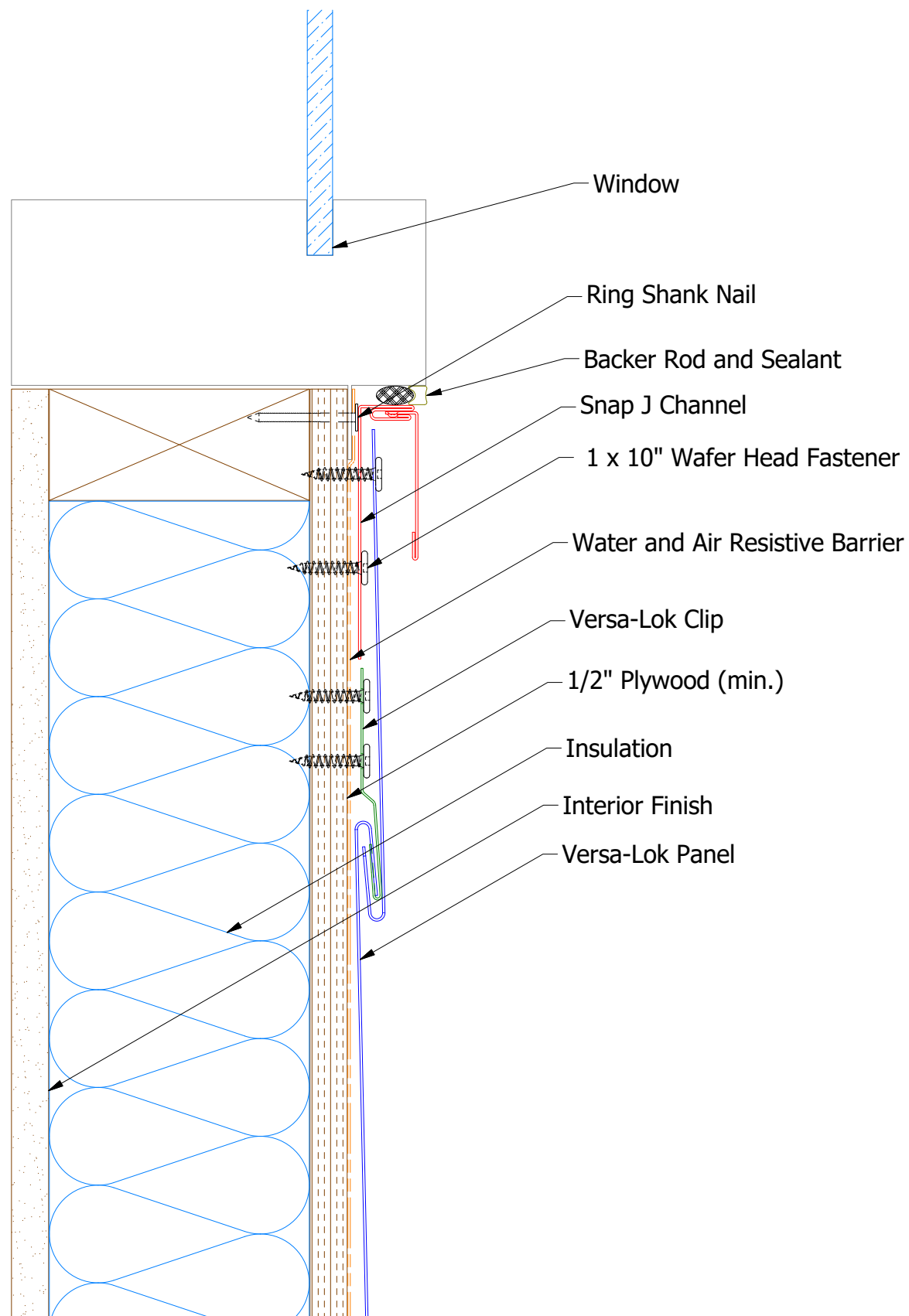


UNS200 - Snap J Cover

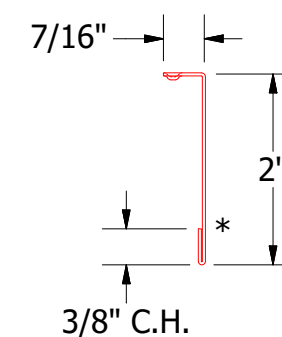
Note: * denotes color side.

ATAS ATAS INTERNATIONAL, INC
 Allentown PA
 610-395-8445
 Mesa AZ
 480-558-7210

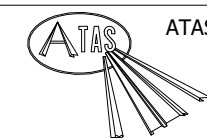
TITLE				Versa-Lok Jamb Window Flange Detail			
REV. NO.	DATE	DESCRIPTION OF REVISION	BY	APP	DWG. NO.	DR	DATE
1	11/17/2020	Updated Snap J Cover SKU and Dimension from 13/16" to 2"	DMR			MBP	8/1/2018
					MATERIAL		DATE
						SH. SIZE	B
						SCALE	X:X



VLA039 - Snap J Base



UNS200 - Snap J Cover

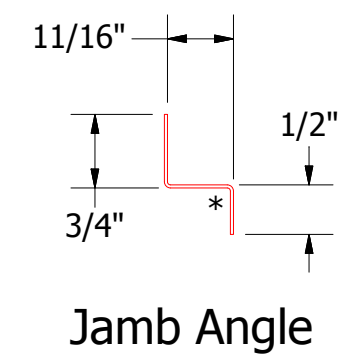
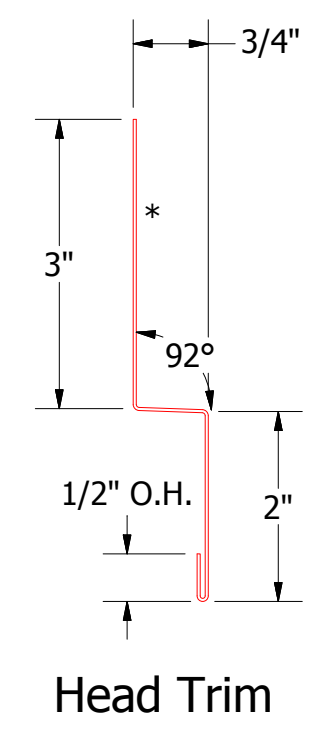
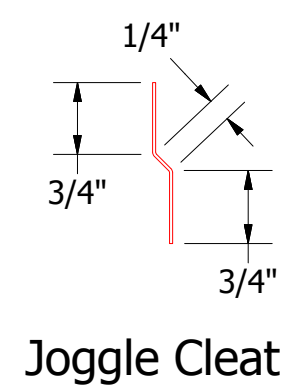
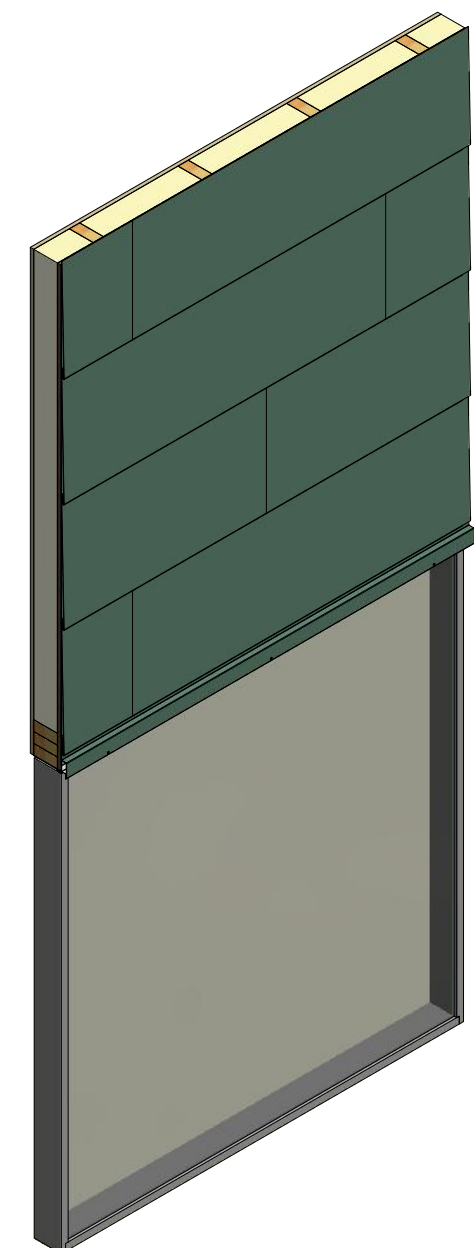
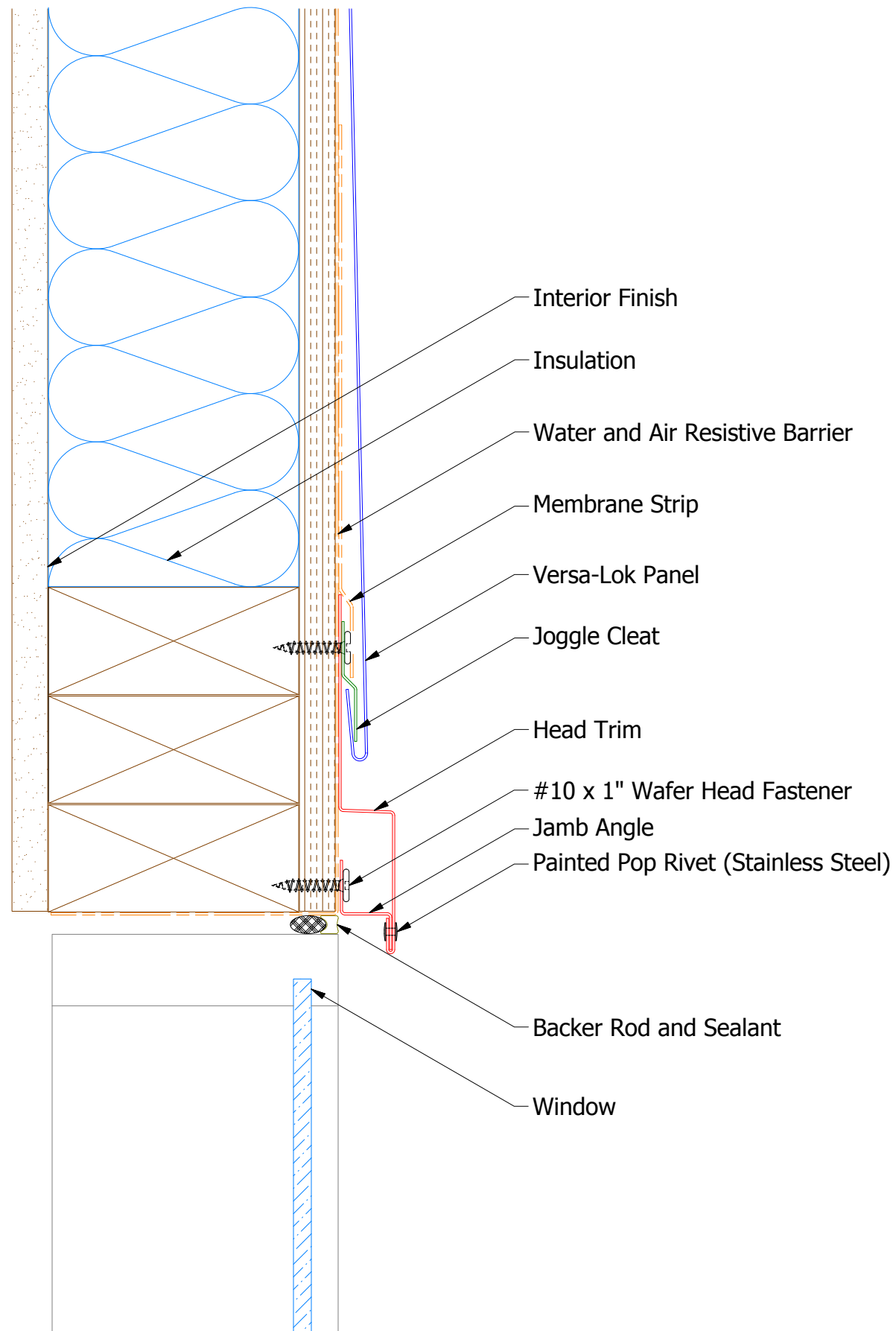


ATAS INTERNATIONAL, INC
 Allentown PA
 610-395-8445
 Mesa AZ
 480-558-7210


TITLE
Versa-Lok Window Sill Flange Detail

					DWG. NO.	DR	MBP	DATE	8/1/2018
1	11/17/2020	Updated Snap J Cover SKU and Dimension from 13/16" to 2"	DMR		MATERIAL	APP		DATE	
REV. NO.	DATE	DESCRIPTION OF REVISION	BY	APP	SH. SIZE	B	SCALE	X:X	

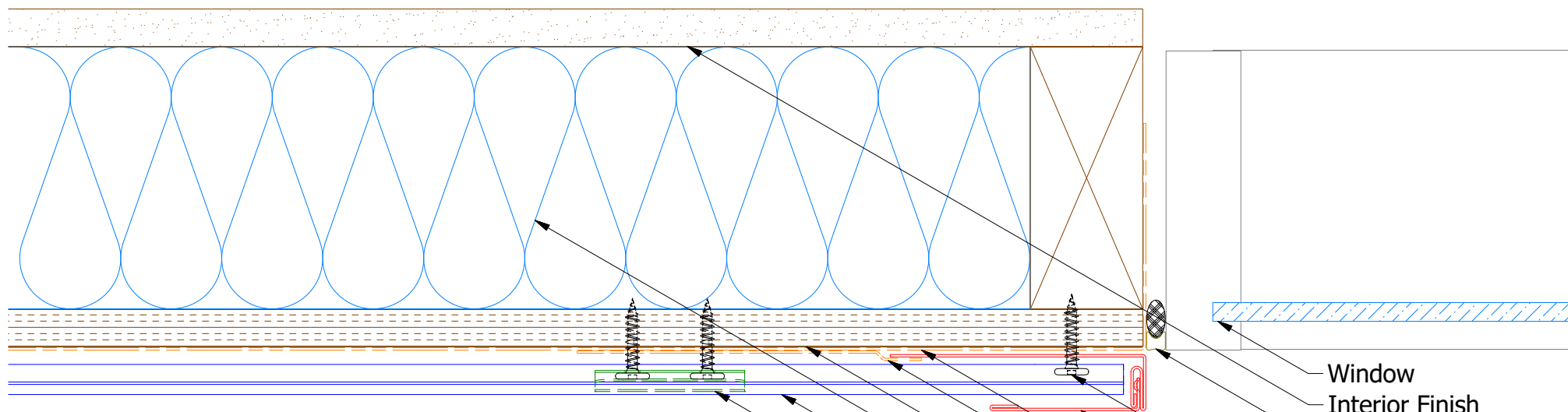
Note: * denotes color side.



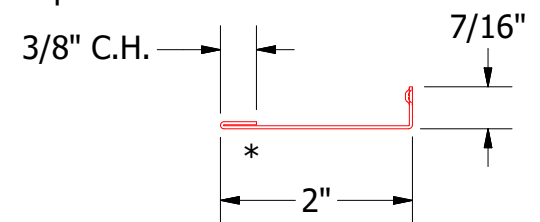
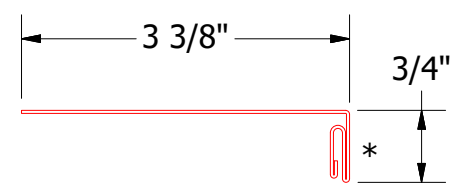
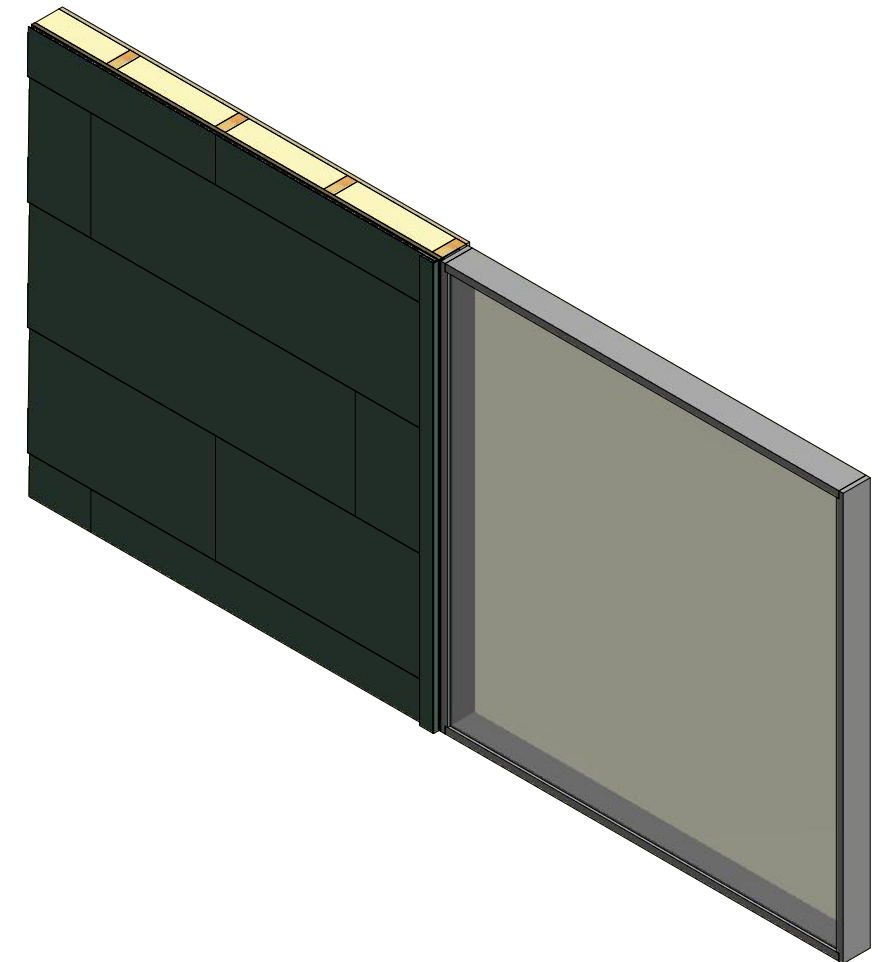
REV. NO.	DATE	DESCRIPTION OF REVISION	BY	APP


ATAS INTERNATIONAL, INC
 Allentown PA
 610-395-8445
 Mesa AZ
 480-558-7210

TITLE Versa-Lok Existing Head Detail
DWG. NO. **DR** **DATE** 6/27/2018
 DMR **DATE**
 APP **DATE**
MATERIAL **SH. SIZE** B **SCALE** X:X



- Window
- Interior Finish
- Backer Rod and Sealant
- #10 x 1" Wafer Head Fastener
- Snap J Channel
- Water and Air Resistant Barrier
- Membrane Strip
- 1/2" Plywood (min.)
- Insulation
- Versa-Lok Panel
- Versa-Lok Clip



VLA039 - Snap J Base

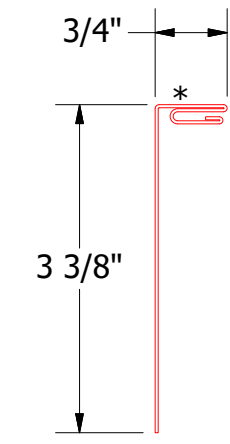
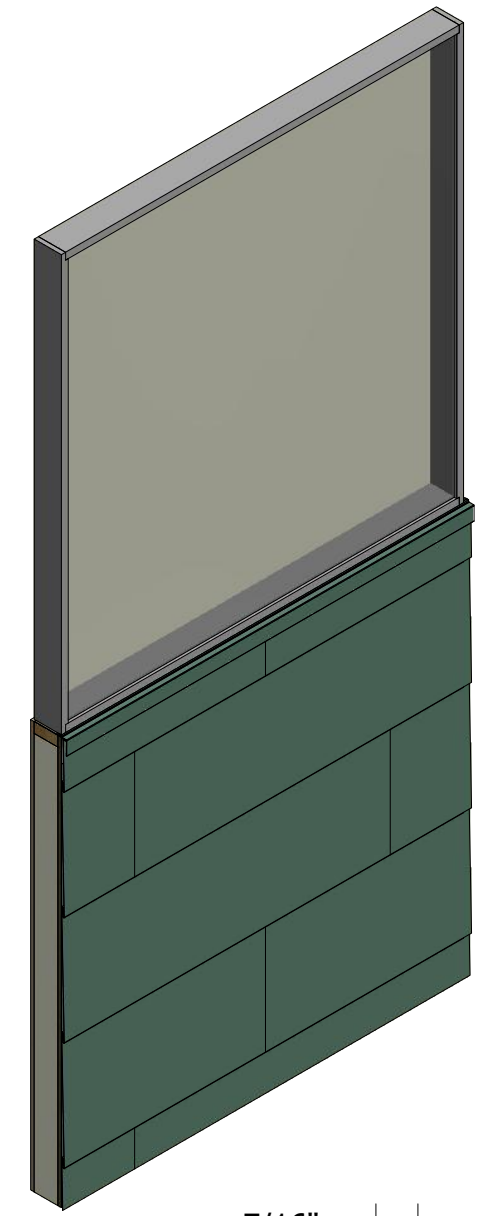
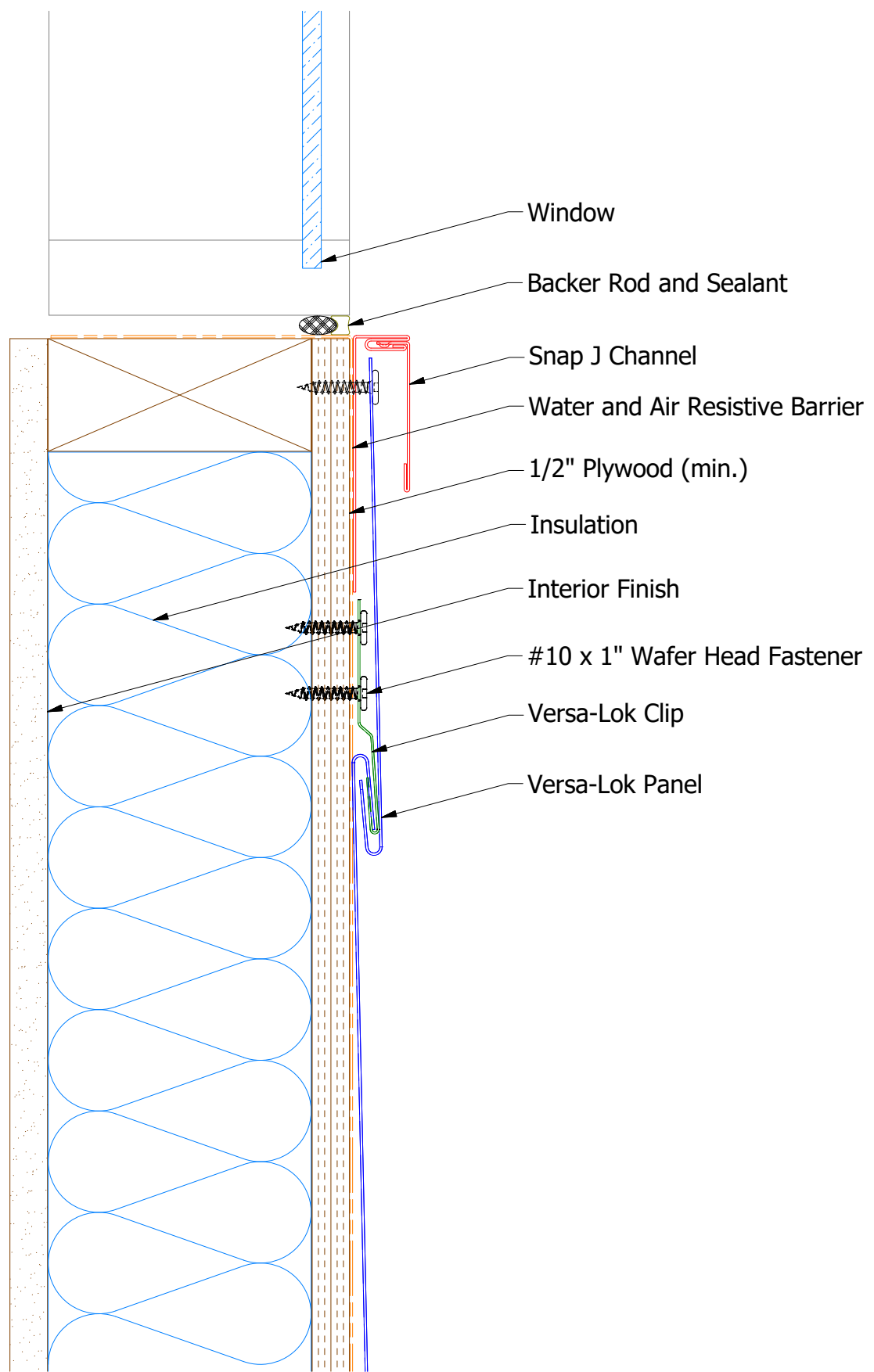
UNS200 - Snap J Cover

ATAS ATAS INTERNATIONAL, INC
 Allentown PA
 610-395-8445
 Mesa AZ
 480-558-7210

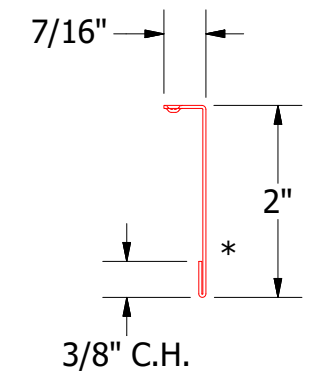
TITLE		Versa-Lok Existing Jamb Detail	
DWG. NO.	DR	DATE	6/28/2018
APP	DMR	DATE	
MATERIAL	SH. SIZE	B	SCALE X:X

REV. NO.	DATE	DESCRIPTION OF REVISION	BY	APP
1	11/17/2020	Updated Snap J Cover SKU and Dimension from 13/16" to 2"	DMR	


Note: * denotes color side.



VLA670 - Snap J Base



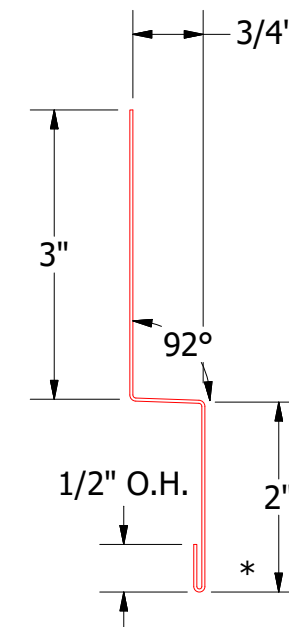
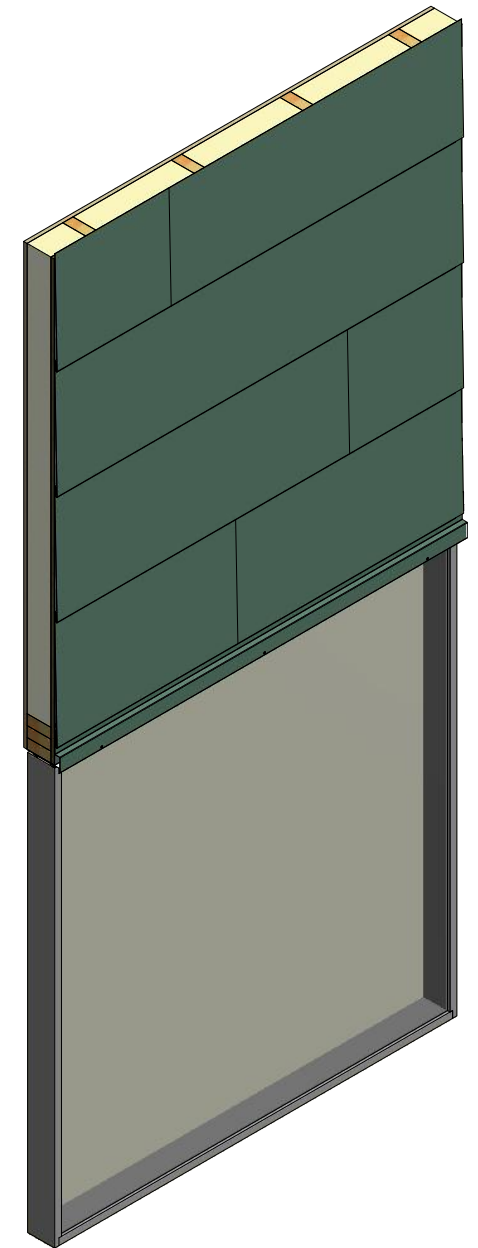
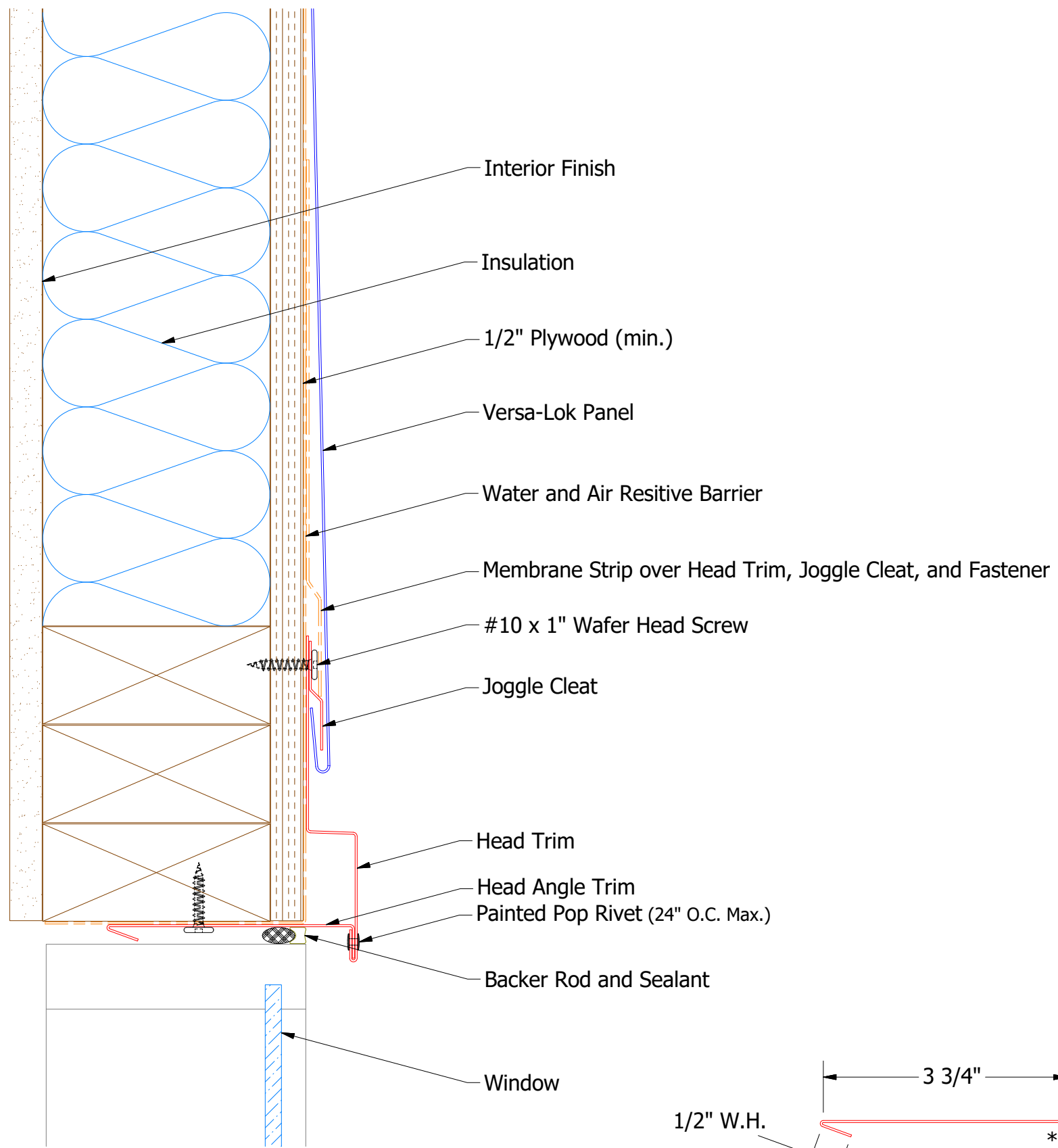
UNS200 - Snap J Cover


ATAS INTERNATIONAL, INC
 Allentown PA
 610-395-8445
 Mesa AZ
 480-558-7210

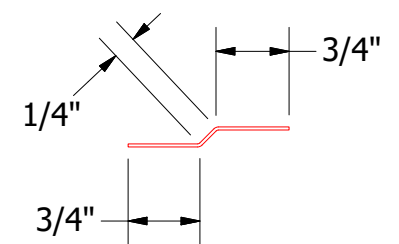
Versa-Lok Existing Window Sill Detail

					DWG. NO.	DR	DATE
1	11/17/2020	Updated Snap J Cover SKU and Dimension from 13/16" to 2"	DMR		APP	DMR	6/29/2018
REV. NO.	DATE	DESCRIPTION OF REVISION	BY	APP	MATERIAL	SH. SIZE	SCALE
						B	X:X

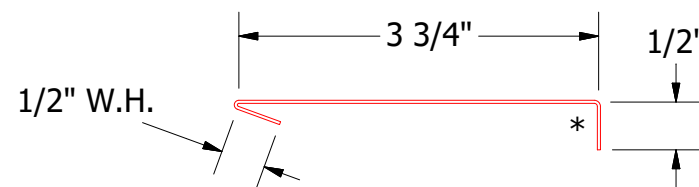
Note: * denotes color side.



VLA550 - Head Trim

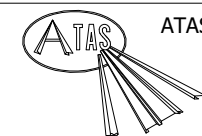


VLA975 - Joggle Cleat



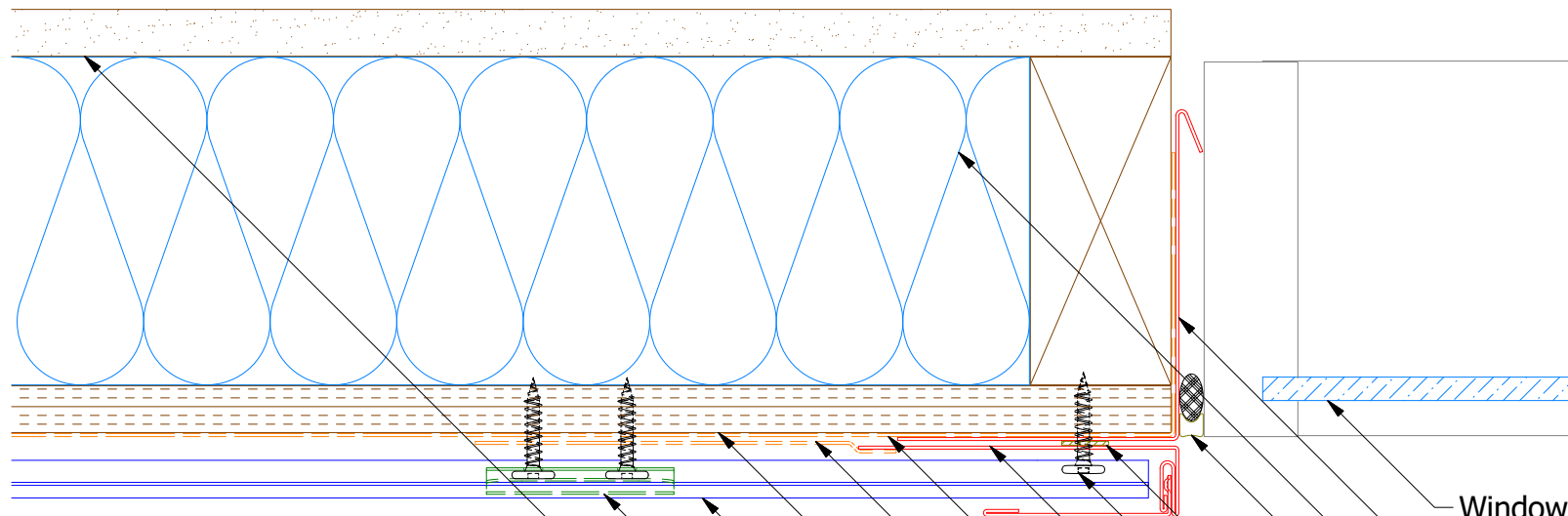
VLA690 - Head Angle Trim

Note: * denotes color side.

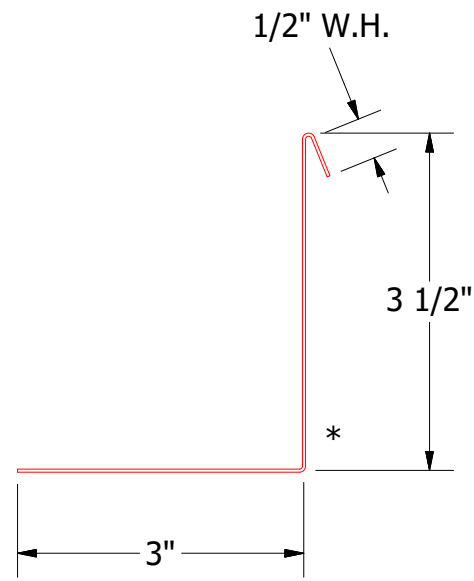
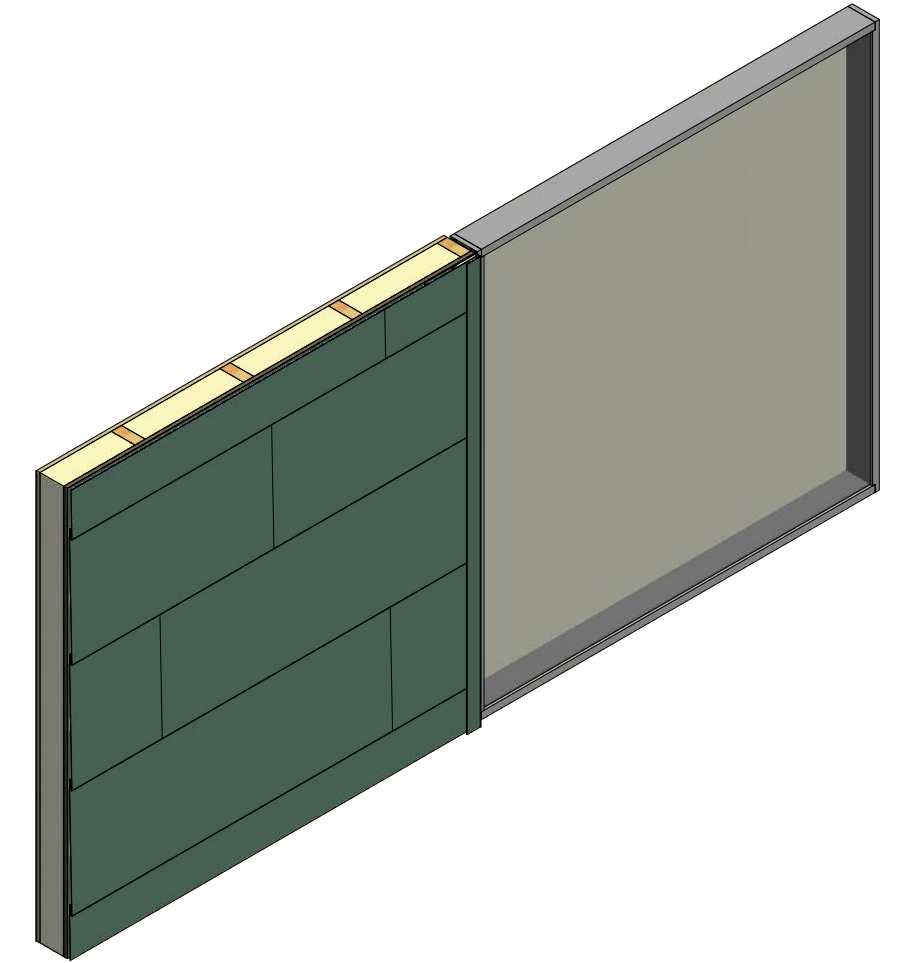


ATAS INTERNATIONAL, INC
 Allentown PA
 610-395-8445
 Mesa AZ
 480-558-7210

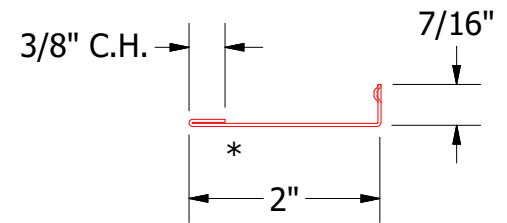
TITLE			
Versa-Lok Head Detail			
DWG. NO.	DR	KRK	DATE 2/9/2016
	APP	DAS	DATE 8/8/16
MATERIAL	SH. SIZE	B	SCALE X:X
REV. NO.	DATE	DESCRIPTION OF REVISION	BY APP



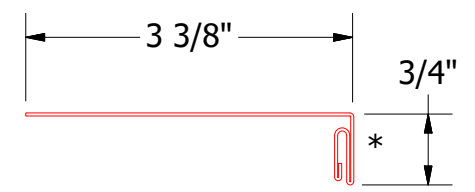
- Window
- Angle Trim with Return
- Insulation
- Backer Rod and Sealant
- Butyl Tape
- #10 x 1" Wafer Head Screw
- Snap J Channel
- Water and Air Resistive Barrier
- Membrane Strip over Snap J Channel
- 1/2" Plywood (min.)
- Versa-Lok Panel
- Versa-Lok Clip
- Interior Finish



VLA683 - Angle Trim with Return



UNS200 - Snap J Cover

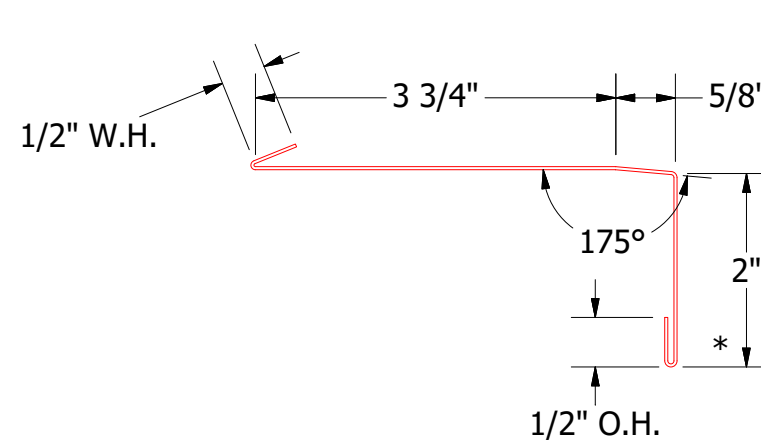
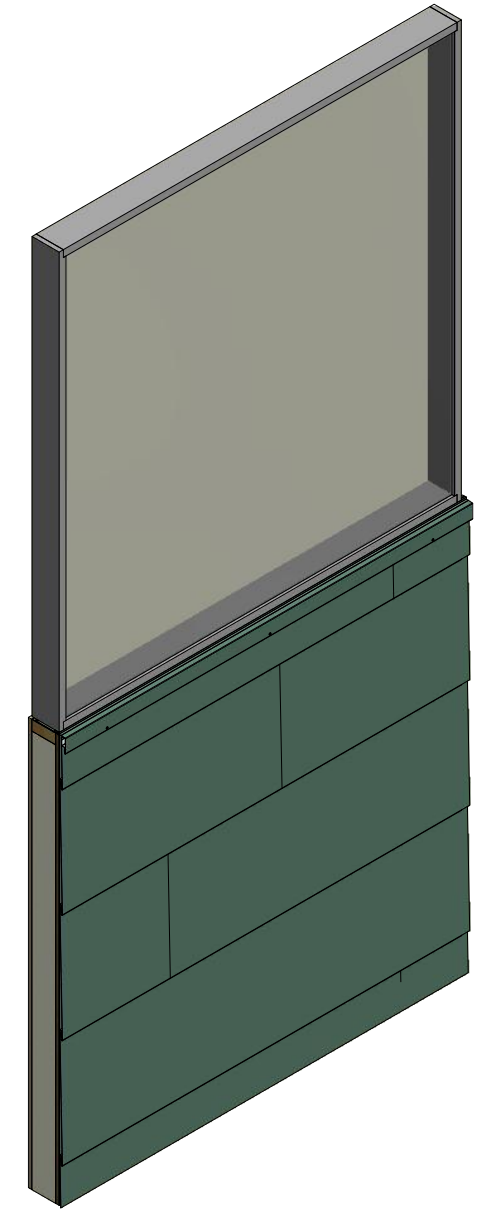
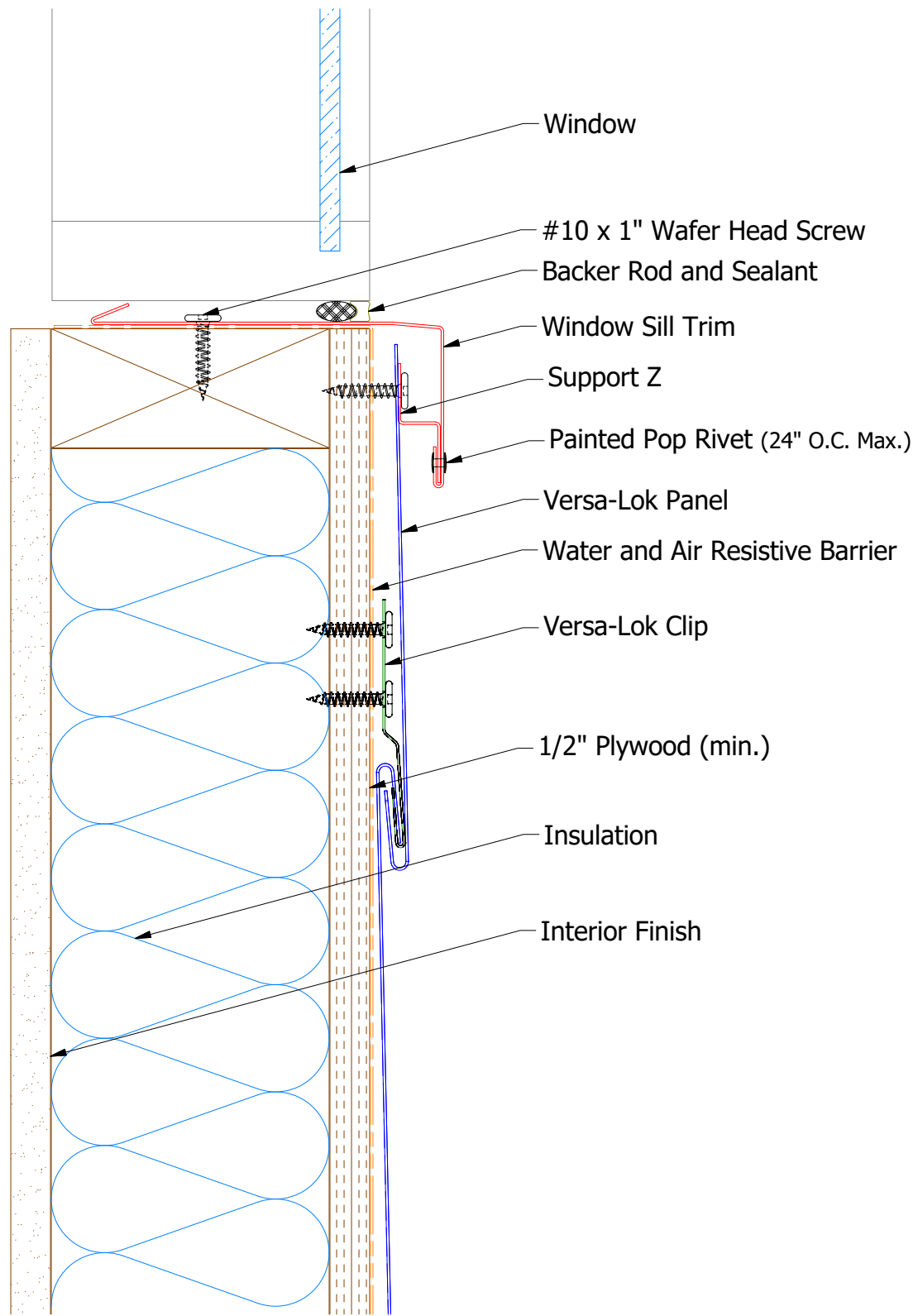


VLA039 - Snap J Base

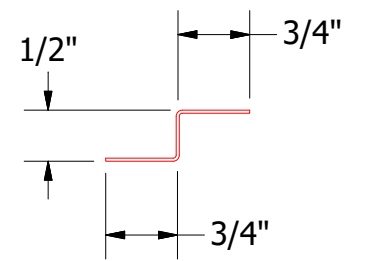
Note: * denotes color side.

REV. NO.	DATE	DESCRIPTION OF REVISION	BY	APP	TITLE	DR	DATE
1	11/17/2020	Updated Snap J Cover SKU and Dimension from 13/16" to 2"	DMR		Versa-Lok Jamb Detail	KRK	2/10/2016
						DAS	8/8/16
						SH. SIZE	B
						SCALE	X:X


ATAS INTERNATIONAL, INC
 Allentown PA
 610-395-8445
 Mesa AZ
 480-558-7210



VLA670 - Window Sill Trim



VLA681 - Support Z

ATAS ATAS INTERNATIONAL, INC
 Allentown PA
 610-395-8445
 Mesa AZ
 480-558-7210

TITLE		Versa-Lok Window Sill Detail	
DWG. NO.	DR	KRK	DATE 2/10/2016
	APP	DAS	DATE 8/8/16
MATERIAL	SH. SIZE	B	SCALE X:X

REV. NO.	DATE	DESCRIPTION OF REVISION	BY	APP

Note: * denotes color side.