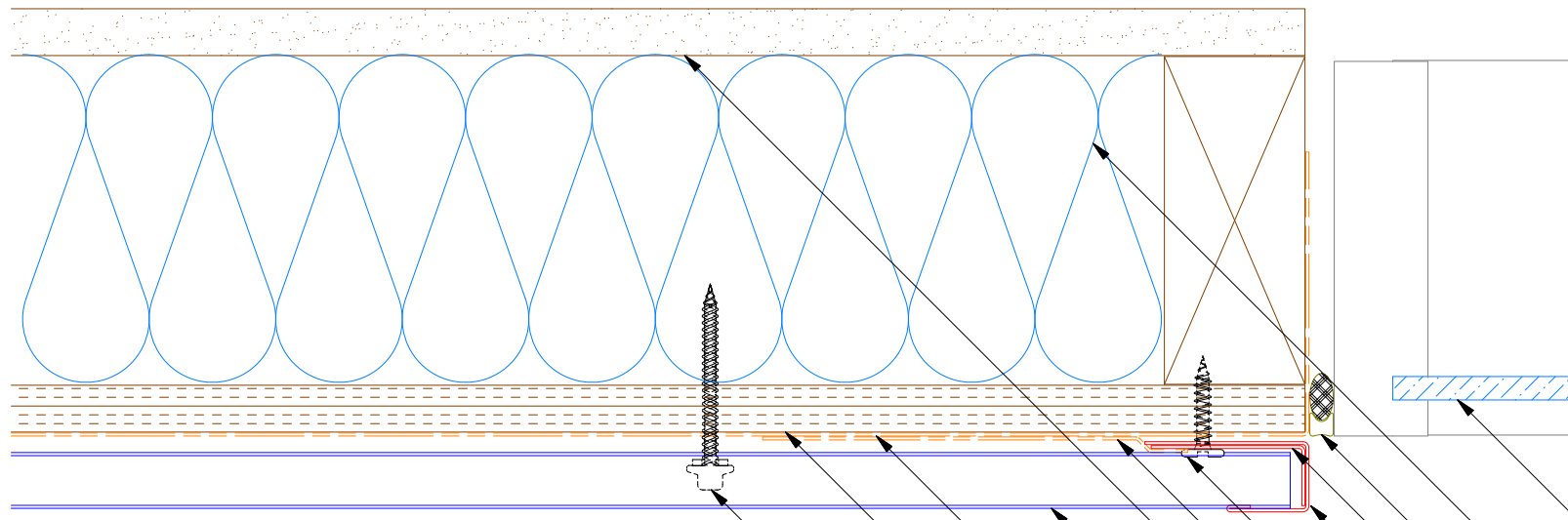
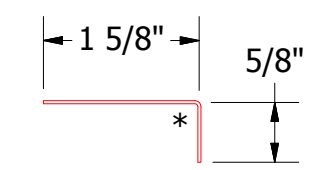
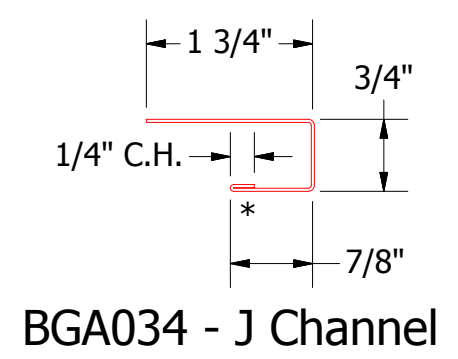
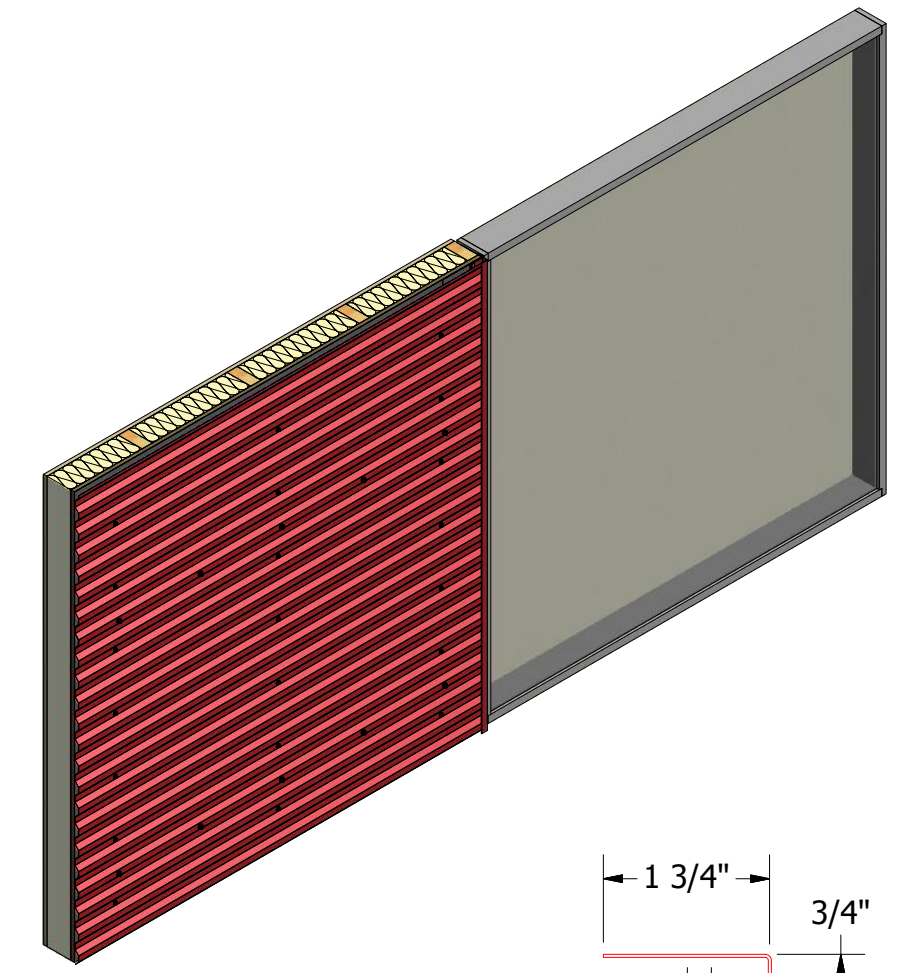


Horizontal Panel



- Window
- Insulation
- Backer Rod and Sealant
- Angle Trim
- J Channel
- #10 x 1" Wafer Head Screw
- Membrane Strip
- Interior Finish
- Grand C Panel
- Water and Air Resistive Barrier
- 1/2" Plywood (min.)
- #10 x 2" Painted Hex Washer Head Screw with Washer



ATAS ATAS INTERNATIONAL, INC
 Allentown PA
 610-395-8445
 Mesa AZ
 480-558-7210

Grand C Jamb Existing Window Detail

REV. NO.	DATE	DESCRIPTION OF REVISION	BY	APP	DWG. NO.	DR	DATE
						MBP	7/18/18
					MATERIAL	APP	DATE
					SH. SIZE	B	SCALE
							X:X