



ATAS International, Inc.
Sustainable Building Envelope Technology

CEILING & SOFFIT SYSTEMS

Exterior Applications



CONTENTS

CEILINGS:

Carrier for Suspended Ceiling Systems	3
Linear Ceiling™	4
Opaline™	5

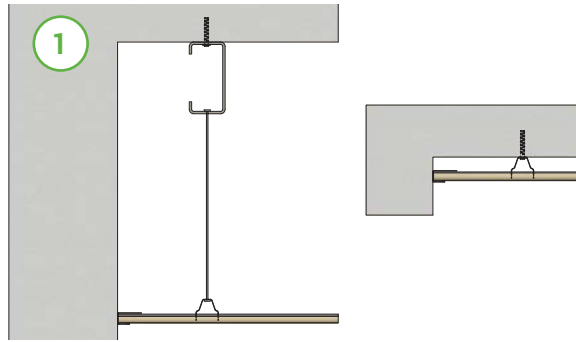
SOFFITS:

Wind-Lok Soffit®	6
Additional Soffit Options	7

ON THE COVER: Linear Ceiling (LCR738) | Cherry | The Chelsea at Clifton

CARRIER FOR SUSPENDED CEILING SYSTEMS

The carrier is prepunched and roll formed from .040 aluminum. The standard length of the carrier is 12'. Holes are prepunched in the top and sides for easy hanging. The ceiling can be suspended by wires or rigid framing, or attached directly to the structure.



SUGGESTED INSTALLATION TECHNIQUES

1, 2, 3 & 4. The simplicity of the installation speaks for itself. The carrier is suspended by wires or rigid frame. The panel is snapped onto the carrier with or without filler strips. The system can also be directly attached to the substructure. The carrier for the Linear Ceiling system is available in .040 aluminum. The carrier track repeats in 4" increments making the different sizes of ceiling panels interchangeable.

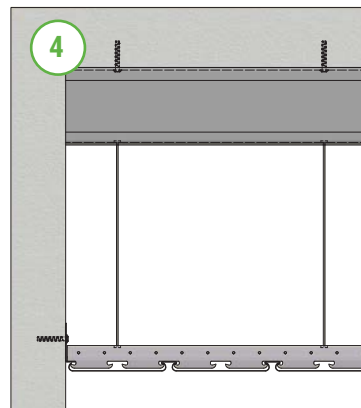
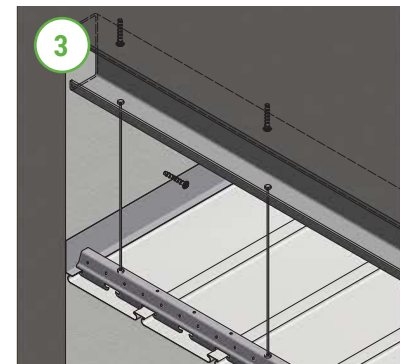
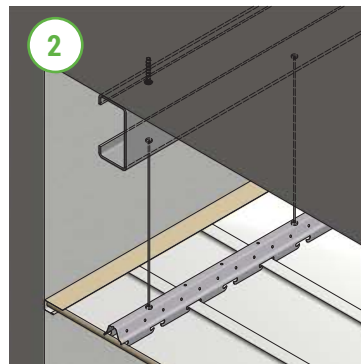
For proper installation, allow a $\frac{1}{8}$ " space between panels* for thermal movement. It is recommended that this hairline connection should be at least 4'-0" and three courses apart on a staggered formation.

5. The splice should be made at the center of the carrier, or use a splice plate to make the connection. Factory lengths are recommended to reduce distortion. The splice pieces are available in the same quality material as the panels. Another effect can be accomplished by dividing the ceiling into equal parts and using an H channel between sections.

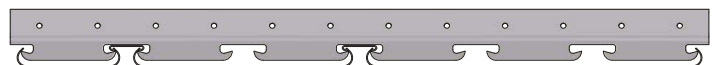
6. When air circulation is desired, the filler can be omitted.

7. For acoustical efficiency, simply lay a low density black fiberglass blanket across the top of the panels between the carriers.

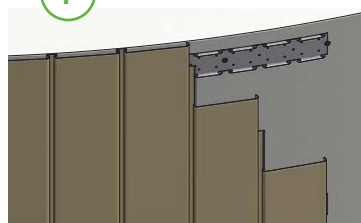
8. For unusual ceiling treatments or aesthetic design reasons, the ceiling system can be installed on a curve. The panels should be installed on a radius carrier which will need a solid support by others. The length of the radius carrier is 12'-0".



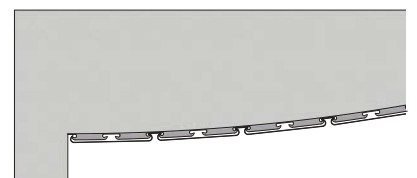
6



7

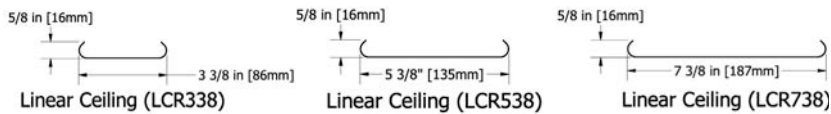
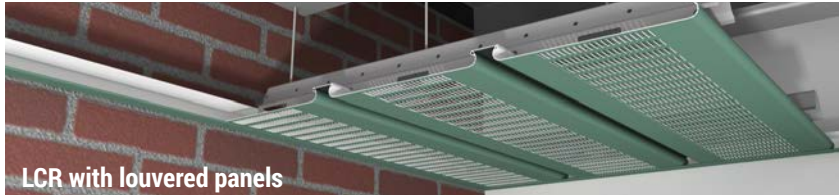


8

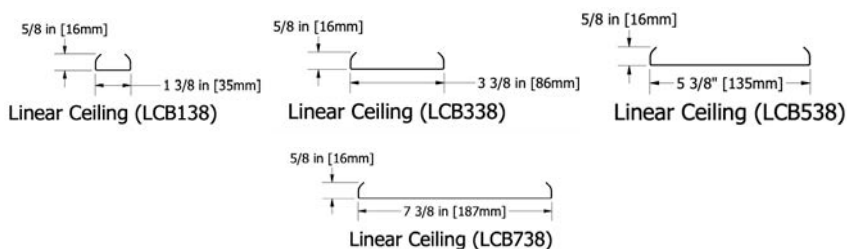
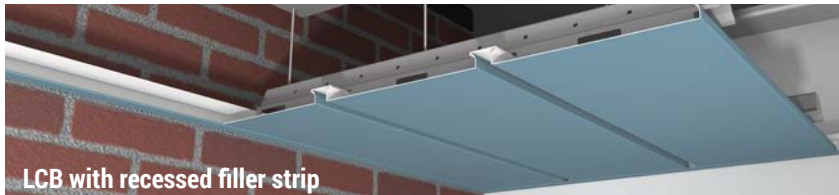


*where panels meet end to end

ROUND EDGE:



BOX STYLE:



LINEAR CEILING™ SUSPENDED CEILING DESIGN

SKU:

Round Edge: LCR338, LCR538, LCR738

Box Style: LCB138, LCB338, LCB538, LCB738

MATERIAL

.019 (only available for LCB338 & LCR338),
.024, .032 aluminum

PANEL SPECS

LCR Width: 3³/₈", 5³/₈", 7³/₈" | 4", 6", 8" coverage
with filler strips

LCB Width: 1³/₈", 3³/₈", 5³/₈", 7³/₈" | 2", 4", 6", 8"
coverage with filler strips

Length: Minimum 4'-0", maximum 20'-0"
(LCB138 is limited to a 12' length)

Height: 5/8"

TEXTURE

Smooth

Wood Grain Embossed (.032 aluminum only)

FINISH

70% PVDF, Mirrored, Wood Grain Finishes

COLORS

Choice of over 40 stock colors in .032 aluminum
.019 and .024 aluminum available in Bone White
with a 70% PVDF finish.

*Custom colors available**

ANODIZED

Clear Satin, Dark Bronze

ACCESSORIES

Suspended carrier, a complete line of
trims available

CARRIER

Metal: Aluminum

Gauge: .040

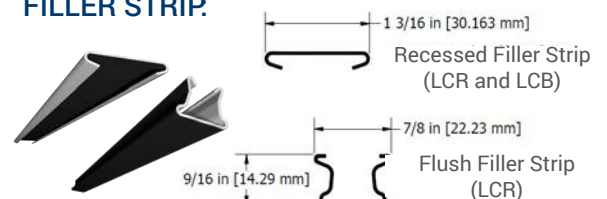
Length: Standard 12'-0"

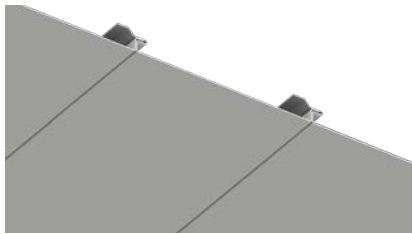
FILLER STRIPS (OPTIONAL)

Available in .019 aluminum in Black
or Bone White

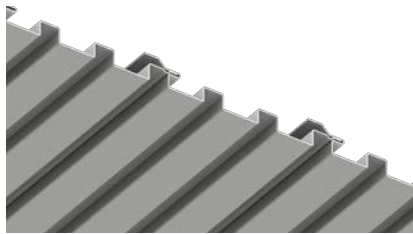
**Subject to minimum quantities and extended lead time.
Inquire for material and panel coverage availability.*

FILLER STRIP.

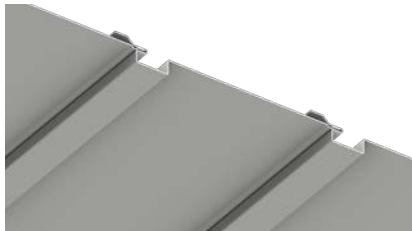




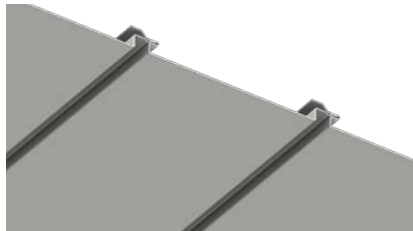
OPF



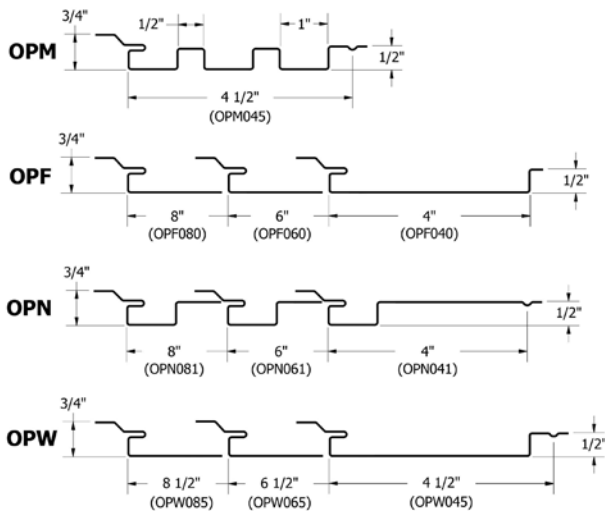
OPM



OPN



OPW



OPALINE™

SKU: OPF, OPM, OPN, OPW

MATERIAL

.032, .040 aluminum

24 ga. metallic coated steel

PANEL SPECS

Coverage: OPF: 4", 6", 8"

OPM: 4 1/2"

OPN: 4", 6", 8"

OPW: 4 1/2", 6 1/2", 8 1/2"

Minimum Length: 1'-6"

Depth: 3/4"

TEXTURE

Smooth, Stucco Embossed, or Wood Grain Embossed

FINISH

70% PVDF, Wood Grain Finishes

COLORS

Choice of over 40 stock colors

Custom colors available*

CARRIER

Opaline is available with a suspended snap-in carrier or is mechanically attached. Only OPF and OPW may be installed with the snap-in carrier.

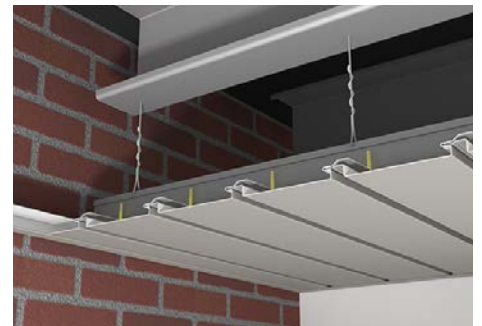
*Subject to minimum quantities and longer lead time. Inquire for availability.



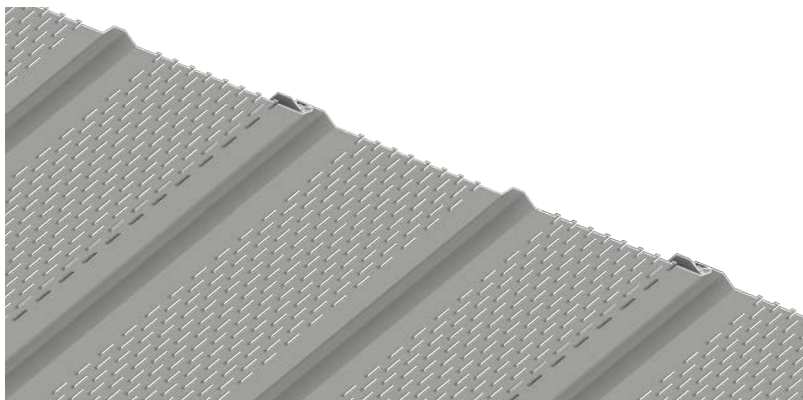
Flush Opaline (OPF) Ceiling with Snap In Carrier



Reveal Opaline (OPW) Ceiling with Snap In Carrier



Reveal Opaline (OPW) Ceiling with Snap In Carrier Mechanically Attached to a Drywall Grid



WIND-LOK® SOFFIT

V-GROOVE DESIGNED PANEL

SKU: MPS120, MPV120

MATERIAL

.019, .024, .032 aluminum

PANEL SPECS

Coverage: 12"

Length: 12'-0", special lengths are available with an 8'-0" minimum, maximum 25'-0"

Height: $\frac{3}{8}$ "

TEXTURE

Smooth, Stucco Embossed, Lanced, or Wood Grain Embossed (.032 aluminum only)

FINISH

70% PVDF

COLORS

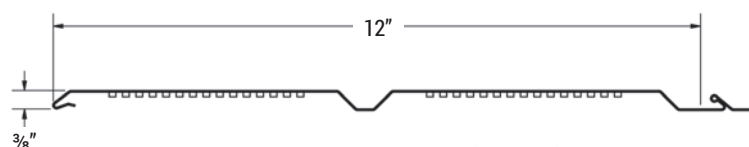
Choice of over 40 stock colors in .032 aluminum, .019, .024 aluminum available in Bone White only. Custom colors available*

ANODIZED

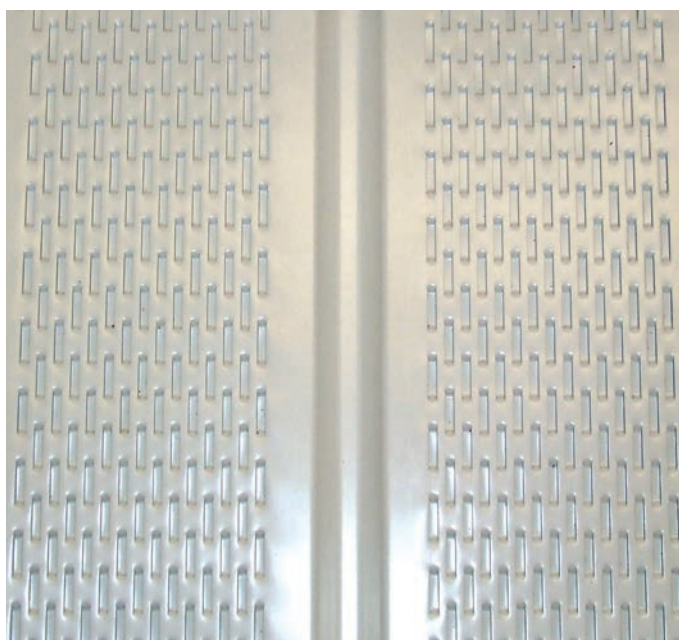
Clear Satin, Dark Bronze (MPS120 only)



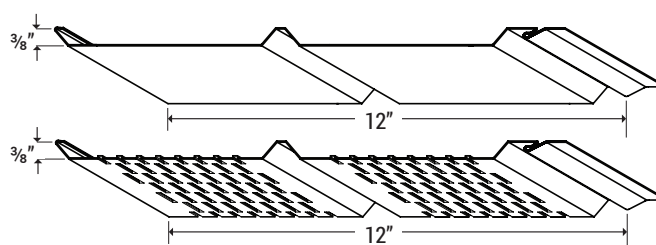
Wind-Lok Soffit Panel (MPS120)



Wind-Lok Soffit Vented Panel (MPV120)



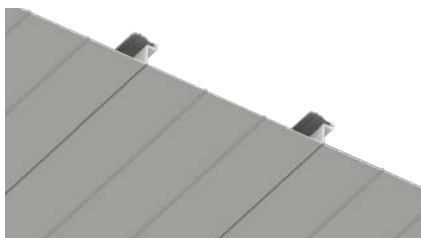
Vented Wind-Lok Soffit Panels allow air circulation, to help in the reduction of interior condensation. They are installed by the patented **"hook, pull, and fasten"** system, which allows for quick and easy installation with concealed fasteners. Panels may be solid or vented. Typical applications for Wind-Lok are wide overhangs and ceilings on porches, breezeways, carports and patios.



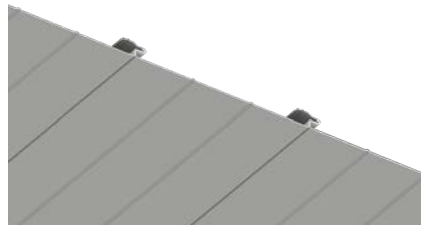
ADDITIONAL SOFFIT OPTIONS



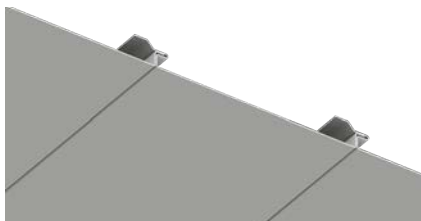
FLUSH



DESIGN WALL, DSF

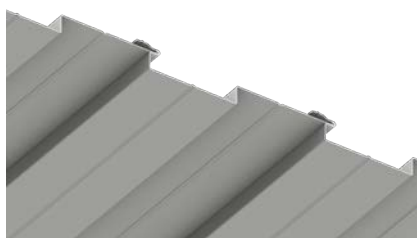


DESIGN WALL, DWF

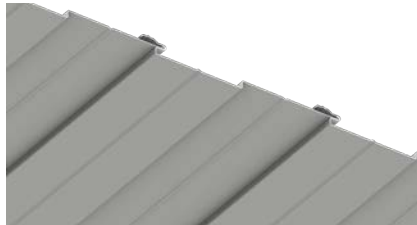


OPALINE, OPF

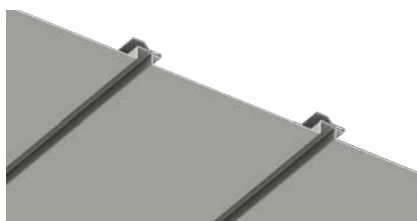
REVEAL



DESIGN WALL, DSH

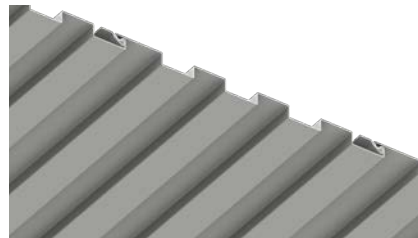


DESIGN WALL, DWH

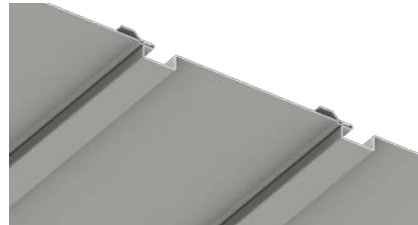


OPALINE, OPW

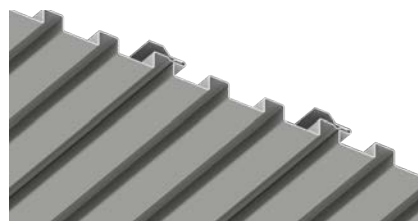
RIBBED



METAFOR, MFP

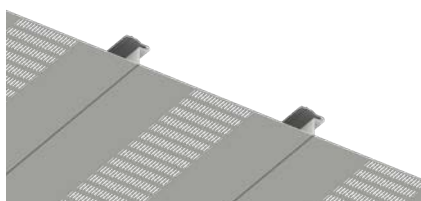


OPALINE, OPN

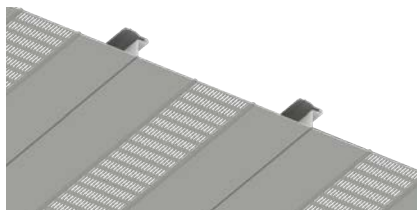


OPALINE, OPM

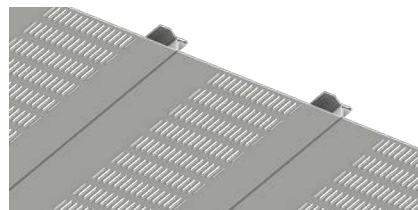
FLUSH & LOUVERED/VENTED OPTIONS



DESIGN WALL, DSF120
WITHOUT STIFFENING RIBS, LOUVERED



DESIGN WALL, DSF120
WITH STIFFENING RIBS, LOUVERED






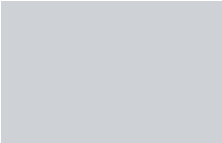


OPALINE, OPF, LOUVERED

COLOR CHART





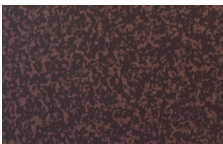
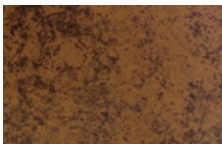
Stock Colors | 70% PVDF Finish

					
Black (02)	Classic Bronze (01)	Medium Bronze (03)	Hartford Green (27)	Forest Green (11)	Teal (19)
					
Hemlock Green (30)	Patina Green (12)	Chocolate Brown (04)	Boysenberry (25)	Redwood (07)	Mission Red (08)
					
Sierra Tan (09)	Rawhide (15)	Concord Cream (05)	Almond (36)	Sandstone (06)	Regal Blue (18)
					
Slate Blue (21)	Siam Blue (14)	Rocky Grey (16)	Charcoal Grey (62)	Slate Grey (20)	Dove Grey (13)
					
Ascot White (10)	Bone White (26)				


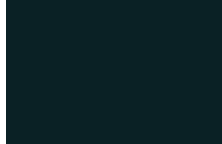




Premium Colors | 70% PVDF Finish

					
Antique Patina (24)	Champagne (31)	Coppertone (23)	Titanium (35)	Silversmith (28)	Brite Red (17)

Woodland Series

					
Birch (57)	Cedar (54)	Driftwood (53)	Walnut (55)	Tarnished Red (47)	Copper Brown (42)

Matte Colors

					
Matte Black (32)	Char Brown (29)	Thunder Grey (34)	Anchor Grey (37)	Ash Grey (33)	Almond (36)

For additional color offerings, visit www.atas.com/colors. For current SRI values and agency listings refer to our Color and Reference Guide: www.atas.com/sri.

ATAS International, Inc.
Allentown, PA | Mesa, AZ | University Park, IL
www.atas.com | 800.468.1441

*Subject to minimum quantities and extended lead time. Inquire for material and panel width availability. Wind-Lok® is a registered trademark of ATAS International, Inc. Colors are as close to the actual colors as modern printing allows. Exact color chips on request; this is a requirement for all premium colors. If you have requirements or preference for colors or finishes other than shown, contact ATAS. Color availability varies by material, gauge and profile. ATAS is not responsible for colors selected from color chart. ATAS reserves the right to modify, eliminate and/or change its products without prior notification. Contact ATAS for more information. Every project is different. To the full extent permissible by law, ATAS disclaims all warranties, express or implied, including, but not limited to, implied warranties of merchantability and fitness for a particular purpose. A qualified engineer, architect or contractor should review suitability of use. Please visit www.atas.com for the most up-to-date information.

© 2021 ATAS International, Inc. LRD1121 LAT320

