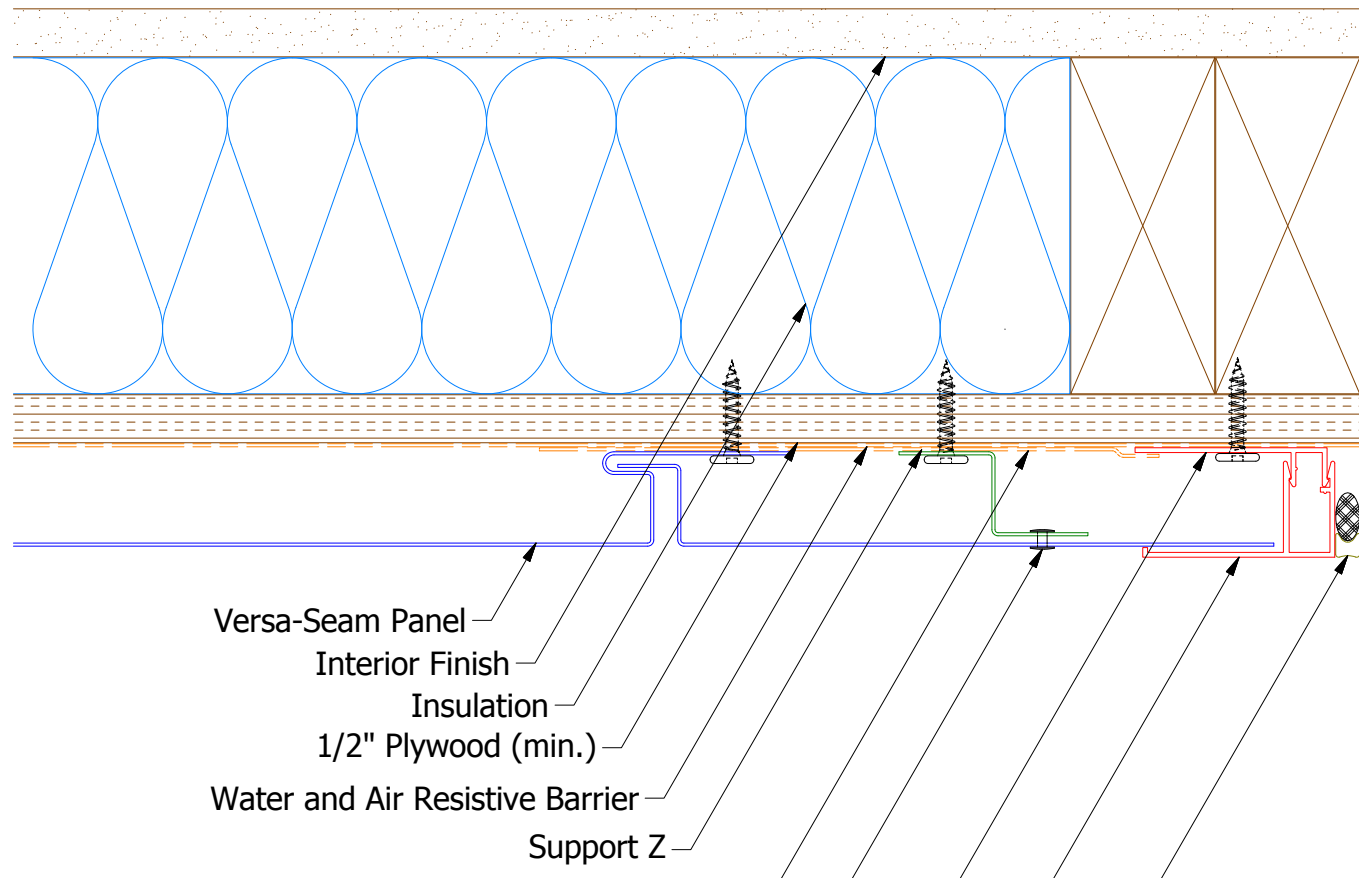
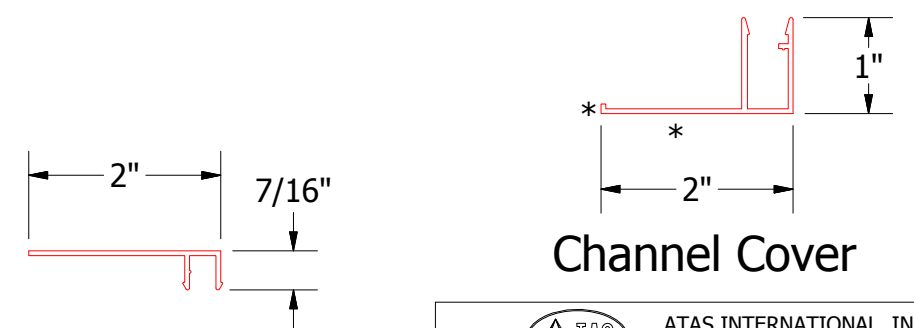
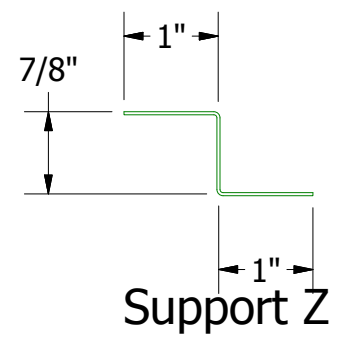
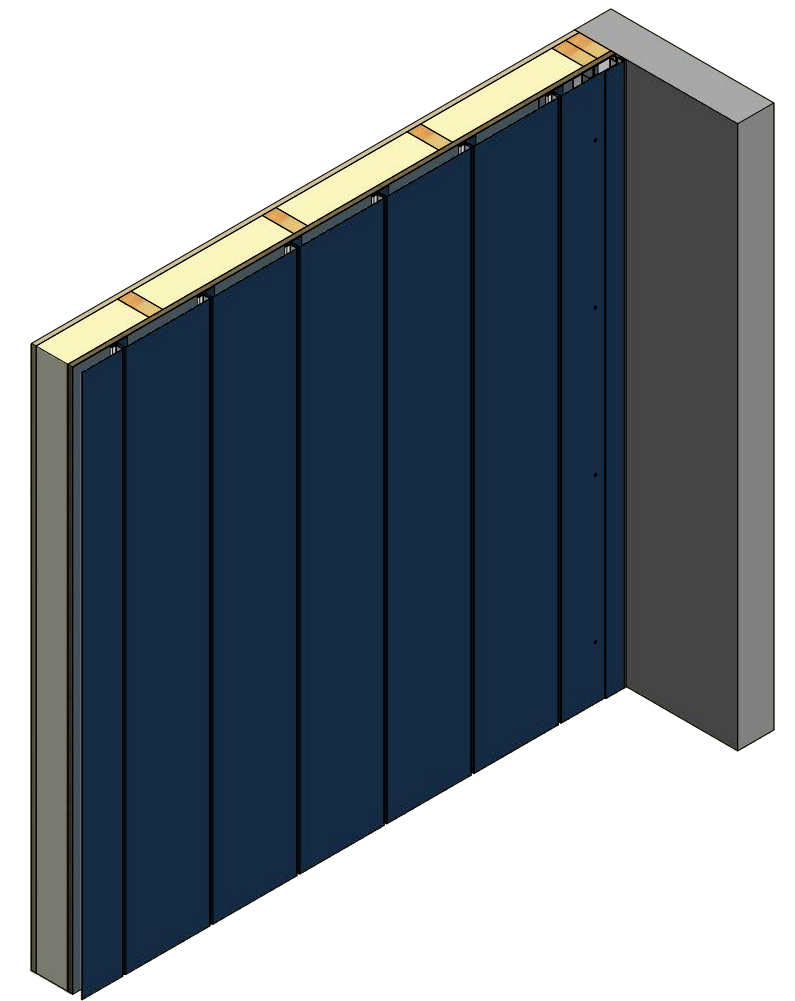


Vertical Panel



- Versa-Seam Panel
- Interior Finish
- Insulation
- 1/2" Plywood (min.)
- Water and Air Resistive Barrier
- Support Z
- Membrane Strip
- Painted Pop Rivet (Stainless Steel)
- Receiver for Channel Cover
- Channel Cover
- Backer Rod and Sealant



Note: * denotes color side.

Receiver for Channel Cover

Channel Cover

ATAS ATAS INTERNATIONAL, INC
 Allentown PA
 610-395-8445
 Mesa AZ
 480-558-7210

REV. NO.				DATE				DESCRIPTION OF REVISION				BY		APP	

DWG. NO.		DR	DMR	DATE	1/29/2019
MATERIAL		APP		DATE	
SH. SIZE	B	SCALE	X:X		

Rigid Wall II Extruded Endwall Detail