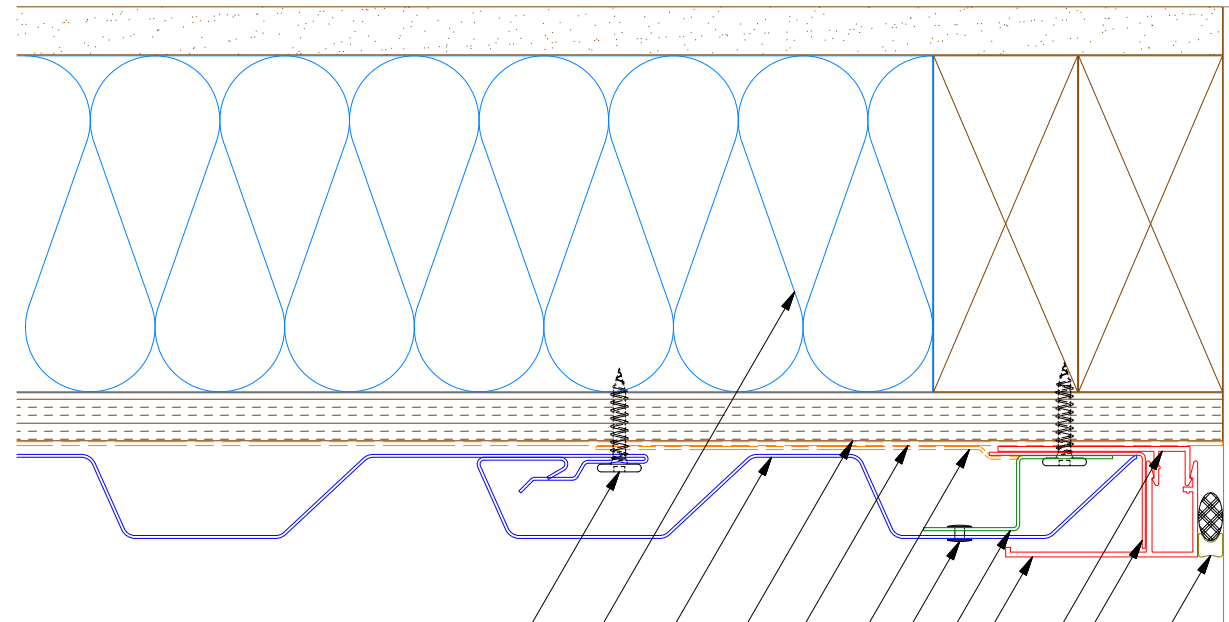
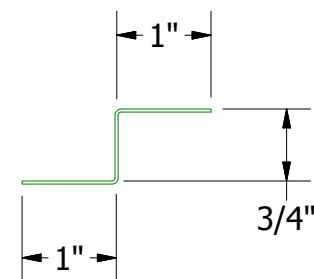


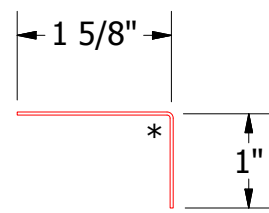
Vertical Panel



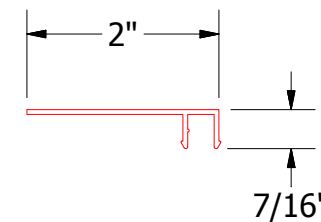
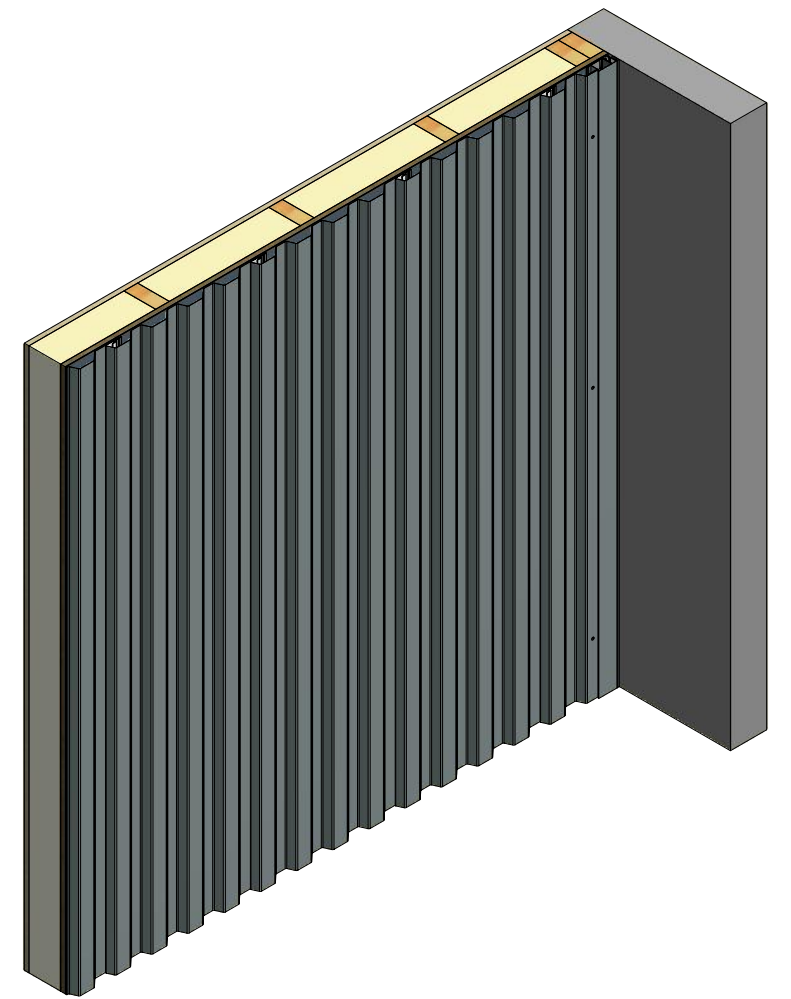
- #10 x 1" Wafer Head Fastener
- Insulation
- Rigid Wall Panel
- 1/2" Plywood (min.)
- Water and Air Resistive Barrier
- Membrane Strip
- S.S. Painted Pop Rivet
- Support Z
- Channel Cover
- Receiver for Channel Cover
- Angle Trim
- Backer Rod and Sealant



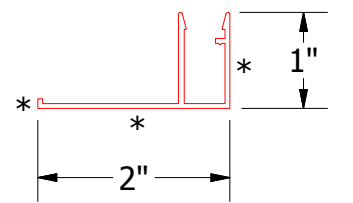
Support Z



Angle Trim



Receiver Extrusion for Channel Cover



Channel Cover Extrusion

ATAS
 ATAS INTERNATIONAL, INC
 Allentown PA
 610-395-8445
 Mesa AZ
 480-558-7210

TITLE		Endwall Extrusion Detail	
DWG. NO.	DR	APP	DATE
01	KRK	APP	10/31/2014
REV. NO.	DATE	DESCRIPTION OF REVISION	SCALE
			X:X

REV. NO.	DATE	DESCRIPTION OF REVISION	BY	APP
01	3/28/2018	Updated Extrusion Name	KRK	