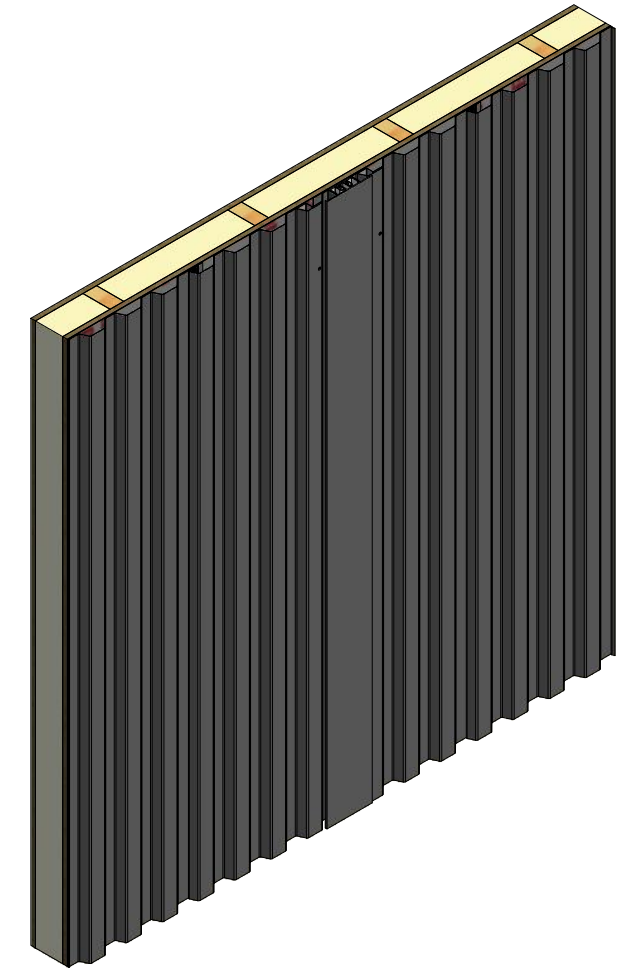
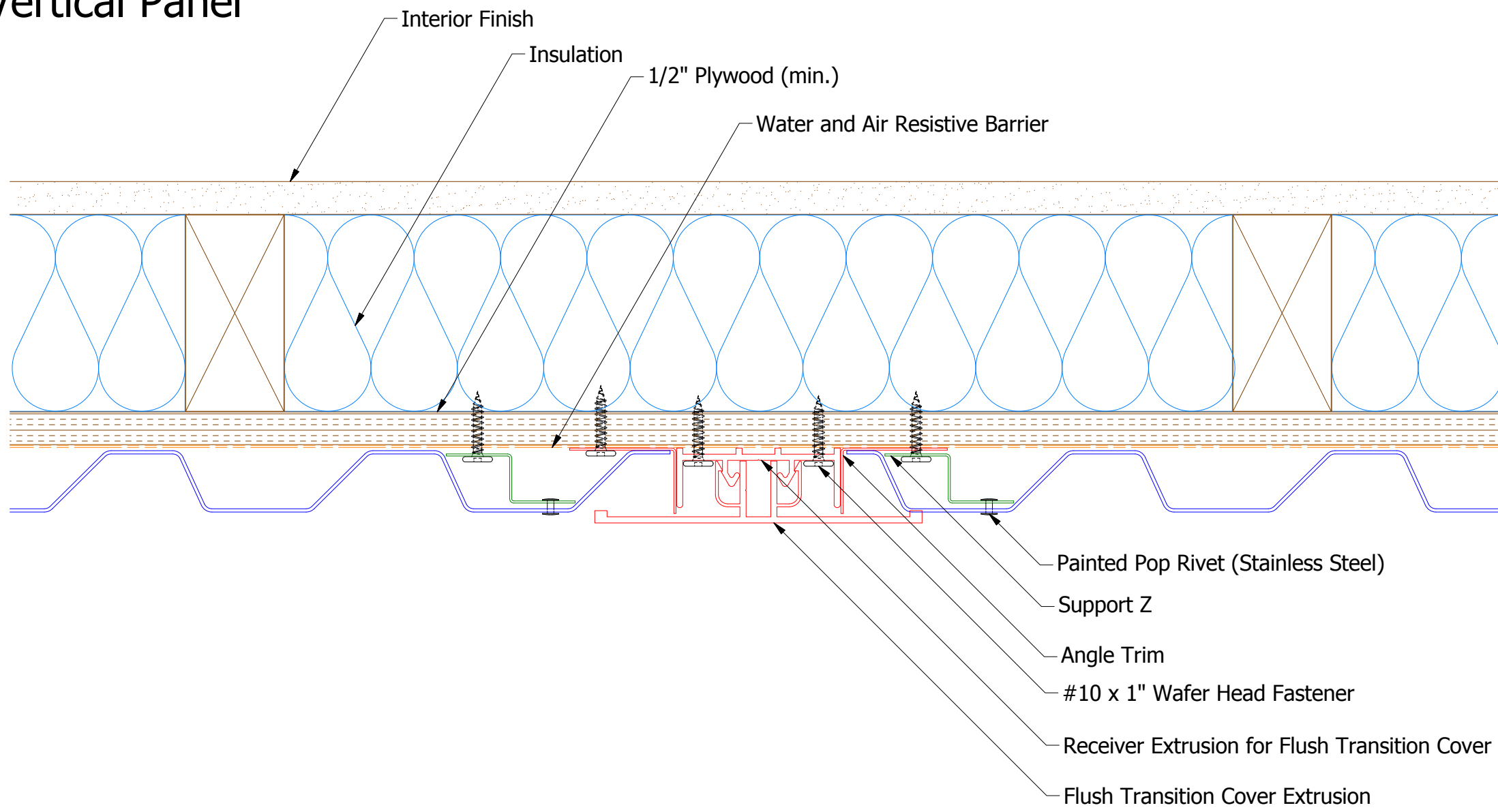
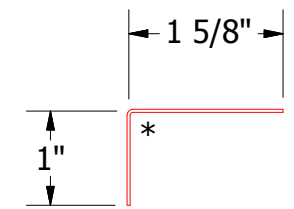


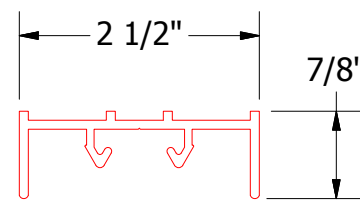
Vertical Panel



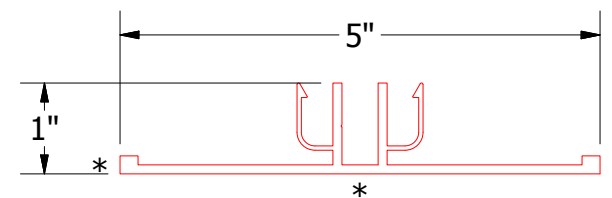
- Painted Pop Rivet (Stainless Steel)
- Support Z
- Angle Trim
- #10 x 1" Wafer Head Fastener
- Receiver Extrusion for Flush Transition Cover
- Flush Transition Cover Extrusion



MCA680 - Angle Trim




MAY902 - Receiver Extrusion for Flush Transition Cover



MAY102 - Flush Transition Cover Extrusion

Note: * denotes color side.

 ATAS INTERNATIONAL, INC Allentown PA 610-395-8445 Mesa AZ 480-558-7210		TITLE Rigid Wall II Extruded Flush Detail			
		DWG. NO.	DR	DATE	2/7/2019
REV. NO.		DATE	DESCRIPTION OF REVISION	BY	APP
MATERIAL		SH. SIZE	B	SCALE	X:X