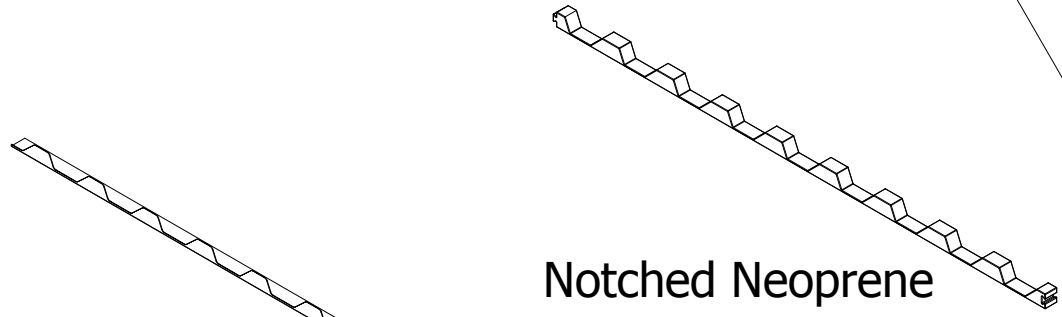
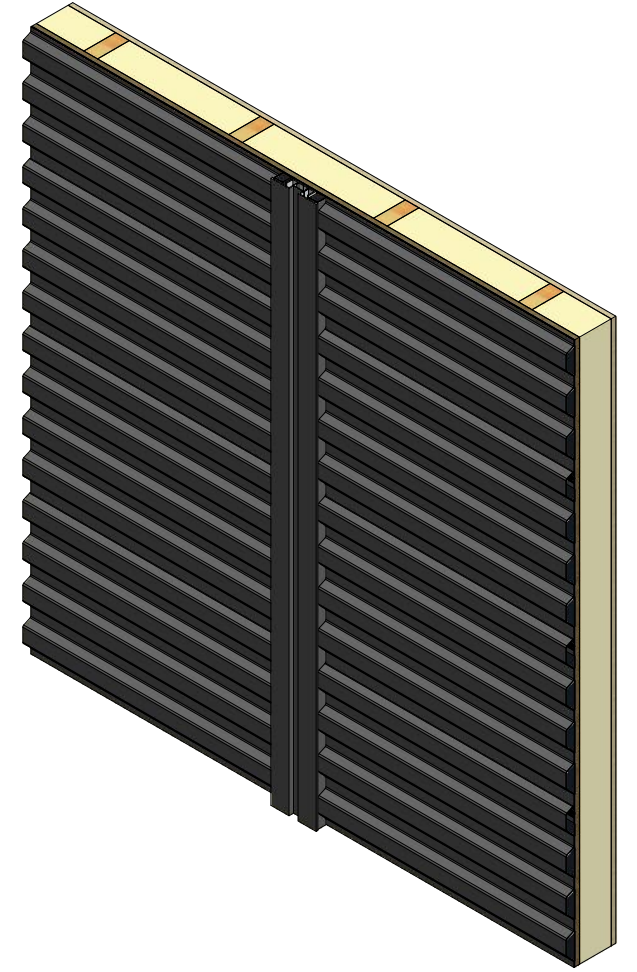
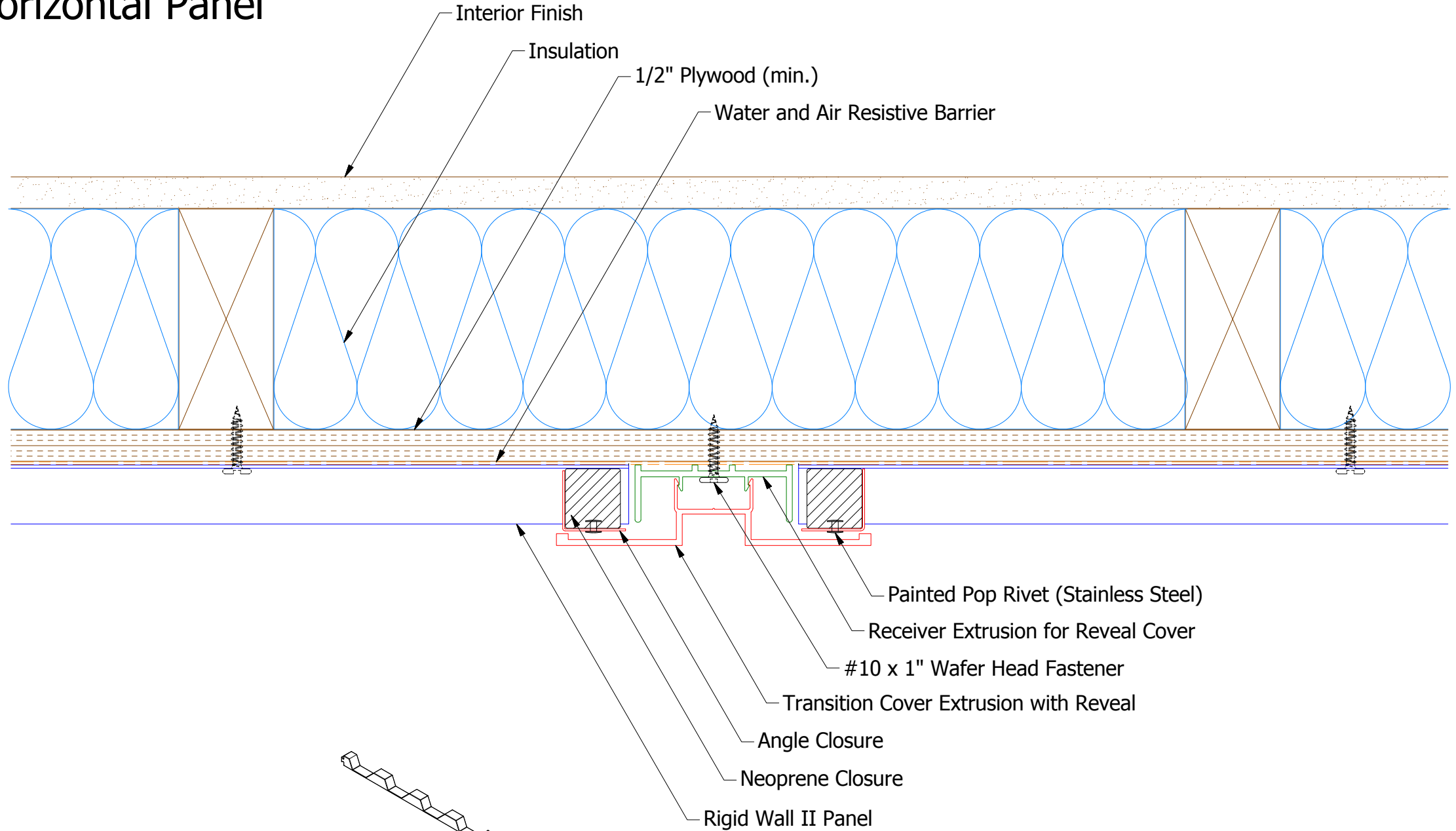
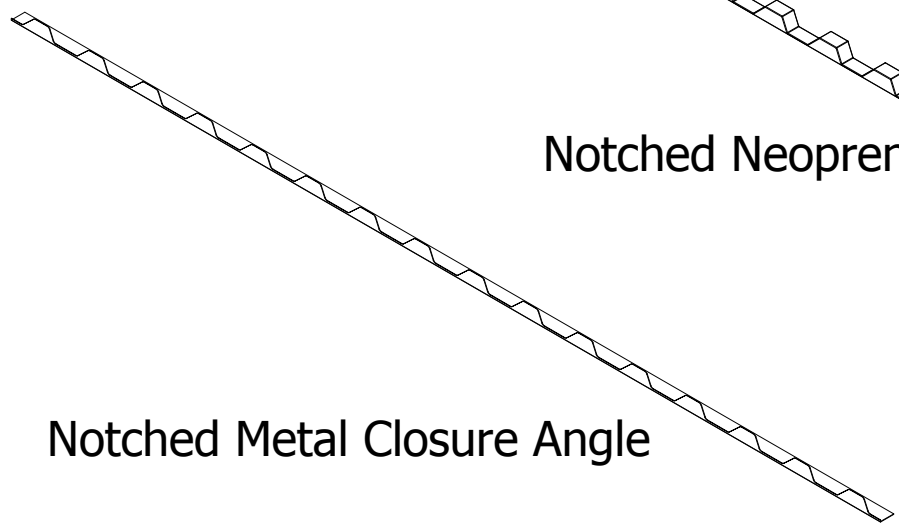


Horizontal Panel

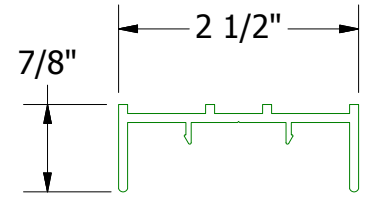


Notched Neoprene

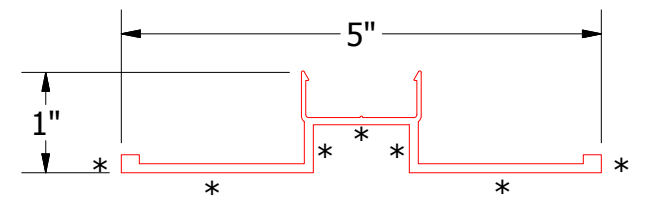


Notched Metal Closure Angle

- Painted Pop Rivet (Stainless Steel)
- Receiver Extrusion for Reveal Cover
- #10 x 1" Wafer Head Fastener
- Transition Cover Extrusion with Reveal
- Angle Closure
- Neoprene Closure
- Rigid Wall II Panel



Receiver Extrusion for Reveal Cover



Transition Cover Extrusion with Reveal

Note: * denotes color side.

ATAS ATAS INTERNATIONAL, INC
 Allentown PA
 610-395-8445
 Mesa AZ
 480-558-7210

TITLE Rigid Wall II Extruded Reveal Detail

DR	DMR	DATE	2/7/2019
APP		DATE	
SH. SIZE	B	SCALE	X:X

REV. NO.	DATE	DESCRIPTION OF REVISION	BY	APP